

SHEET NOTES

- 01 THIS SHEET NEEDS TO BE READ FROM
TOP TO BOTTOM AND FROM LEFT TO RIGHT.
02 SQUARE D HIGH DENSITY METERING OR EQUAL.

Portland International

Jetport

1001 Westbrook Street
Portland, Maine 04102

Gensler

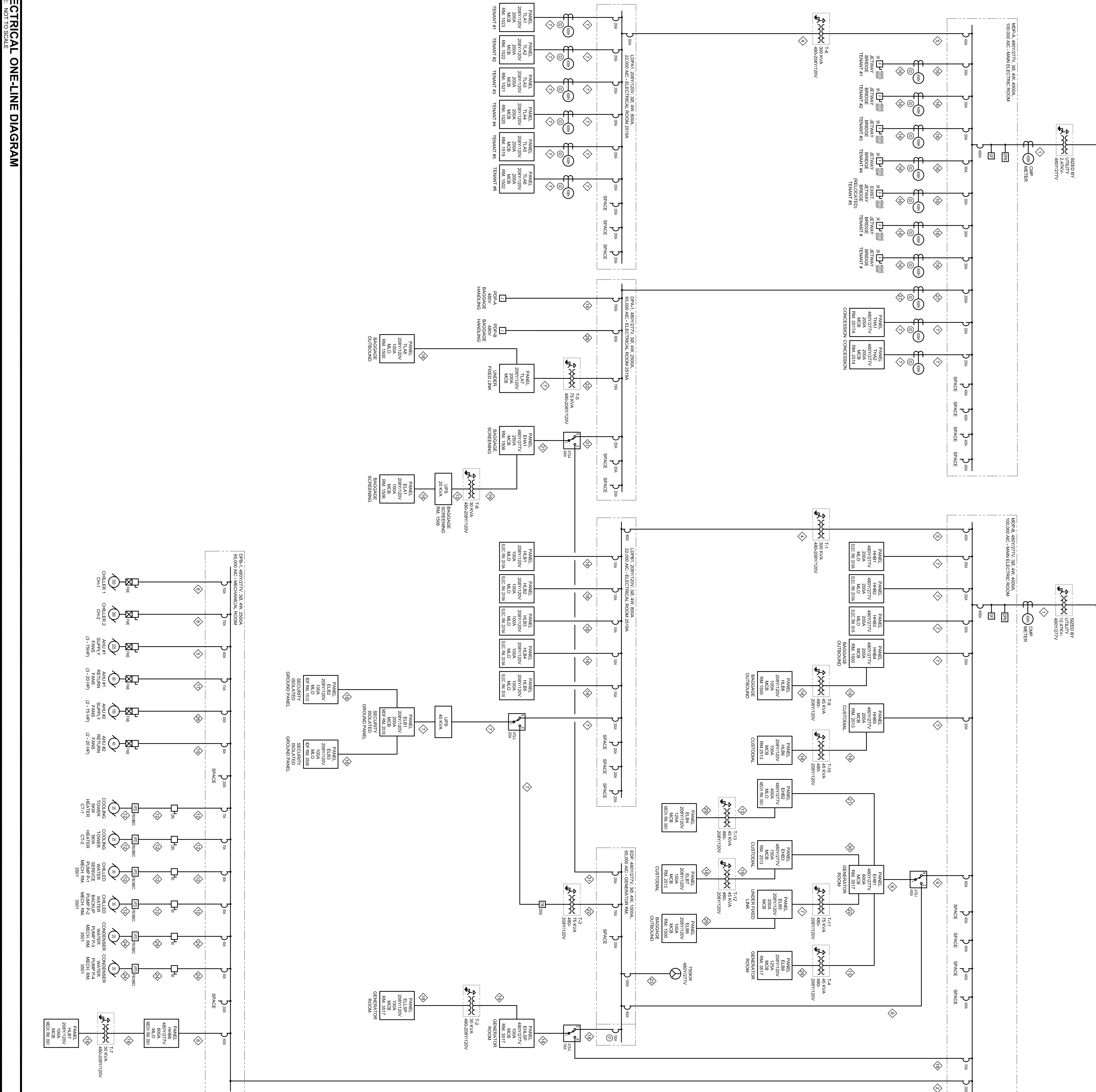
west ASSOCIATES, INC.
engineers • architects • surveyors • construction managers

CABLE SCHEDULE

- 15-0FC, 4-800 KVMIL & 1-2/0 GND
- 6-4FC, 4-800 KVMIL & 1-3/0 KVMIL GND
- 4-4FC, 4-800 KVMIL & 1-4/0 GND
- 2-4FC, 4-800 KVMIL & 1-1/0 GND
- 2-4FC, 4-800 KVMIL & 1-2/0 GND
- 2FC, 2-5/0 AVG & #8 GND
- 3-1/2FC, 3-400 KVMIL & #10 GND
- 2FC, 2-3/0 AVG & #8 GND
- 1FC, 1-3/8 AVG & #8 GND
- 1-1/2FC, 3-4/0 AVG & #8 GND
- 1-1/2FC, 3-4/0 AVG & #8 GND
- 4-4FC, 4-800 KVMIL & #10 GND
- 2-4FC, 2-5/0 AVG & #8 GND
- 1-1/2FC, 3-4/0 AVG & #8 GND
- 1-1/2FC, 3-4/0 AVG & #8 GND
- 2FC, 2-5/0 AVG & #8 GND
- 4FC, 4-800 KVMIL & #10 GND
- 1-1/2FC, 3-4/0 AVG & #8 GND
- 3-4FC, 4-800 KVMIL & #10 GND
- 3-4FC, 3-4/0 AVG & #8 GND
- 1-1/2FC, 3-4/0 AVG & #8 GND
- 2-4FC, 2-5/0 AVG & #8 GND
- 2FC, 2-3/0 AVG & #8 GND
- 4FC, 4-800 KVMIL & #10 GND
- 1-1/2FC, 3-4/0 AVG & #8 GND
- 3-4FC, 4-800 KVMIL & #10 GND
- 1FC, 1-3/8 AVG & #8 GND
- 2-1/2FC, 3-4/0 AVG & #8 GND
- 5-4FC, 4-800 KVMIL & #10 GND
- 2-4FC, 2-5/0 AVG & #8 GND
- 2FC, 2-3/0 AVG & #8 GND
- 2FC, 4-4/1 AVG & #4 GND
- 2FC, 4-4/0 & #4 GND
- 3FC, 4-4/2/0 KVMIL & #4 GND

GENERAL NOTES

- A SEE SHEET 600 FOR LEGEND AND GENERAL NOTES.



Scale: AS NOTED

E12.01

©2009 Gensler

Project Name		By	Check
PIM Terminal Expansion		LAM	BHG
Project Number	01 07/11/09	Design	Design
Revision Number	02 09/22/09	Design	Design
Revision Description	03 12/03/09	LAM	BHG
Revision Description	04 01/23/10	LAM	BHG
Revision Description	05 03/25/10	LAM	BHG
Issued For Permit		LAM	BHG