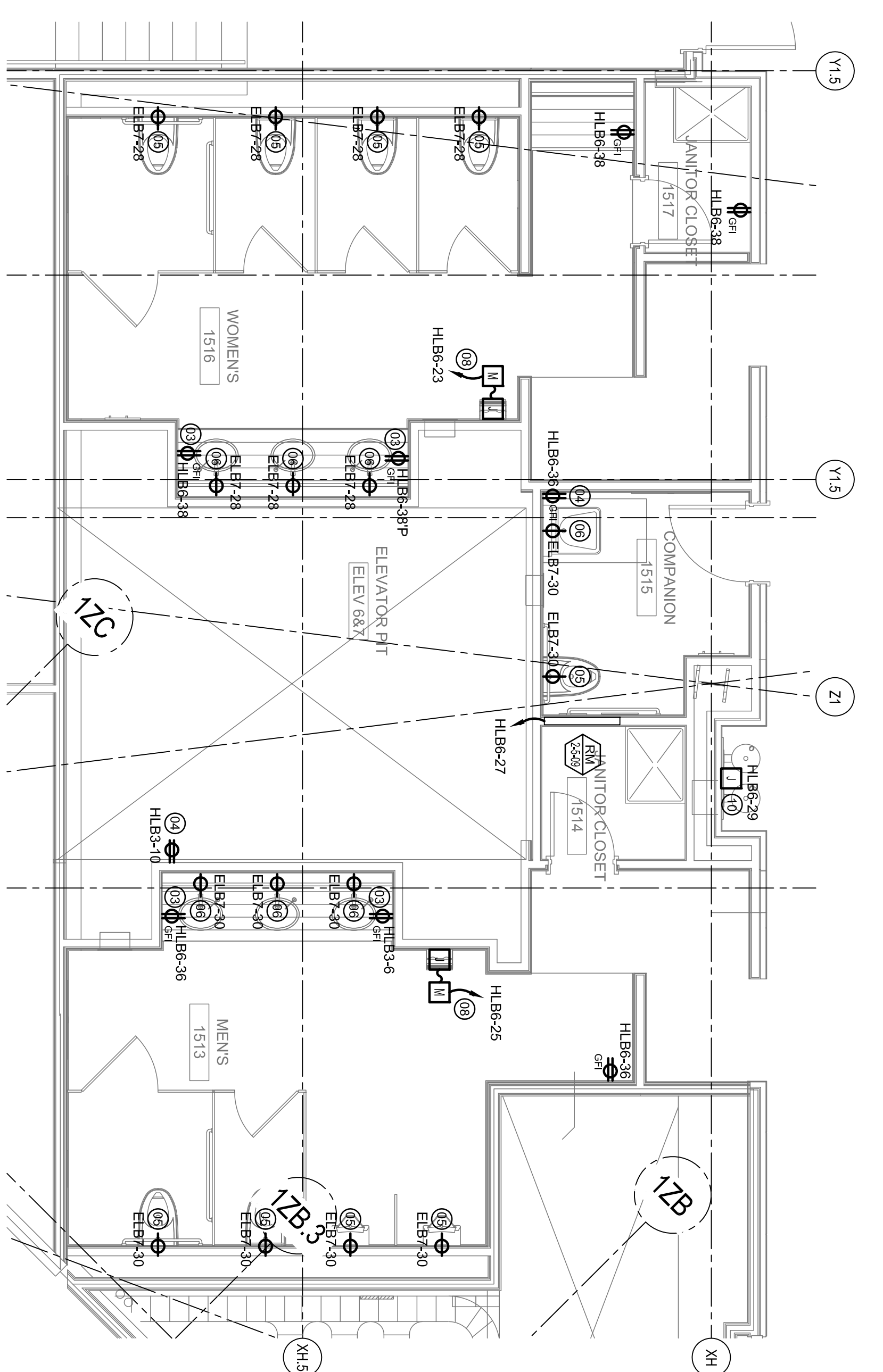


Portland International  
Jetport  
1001 Westbrook Street  
Portland, Maine 04102

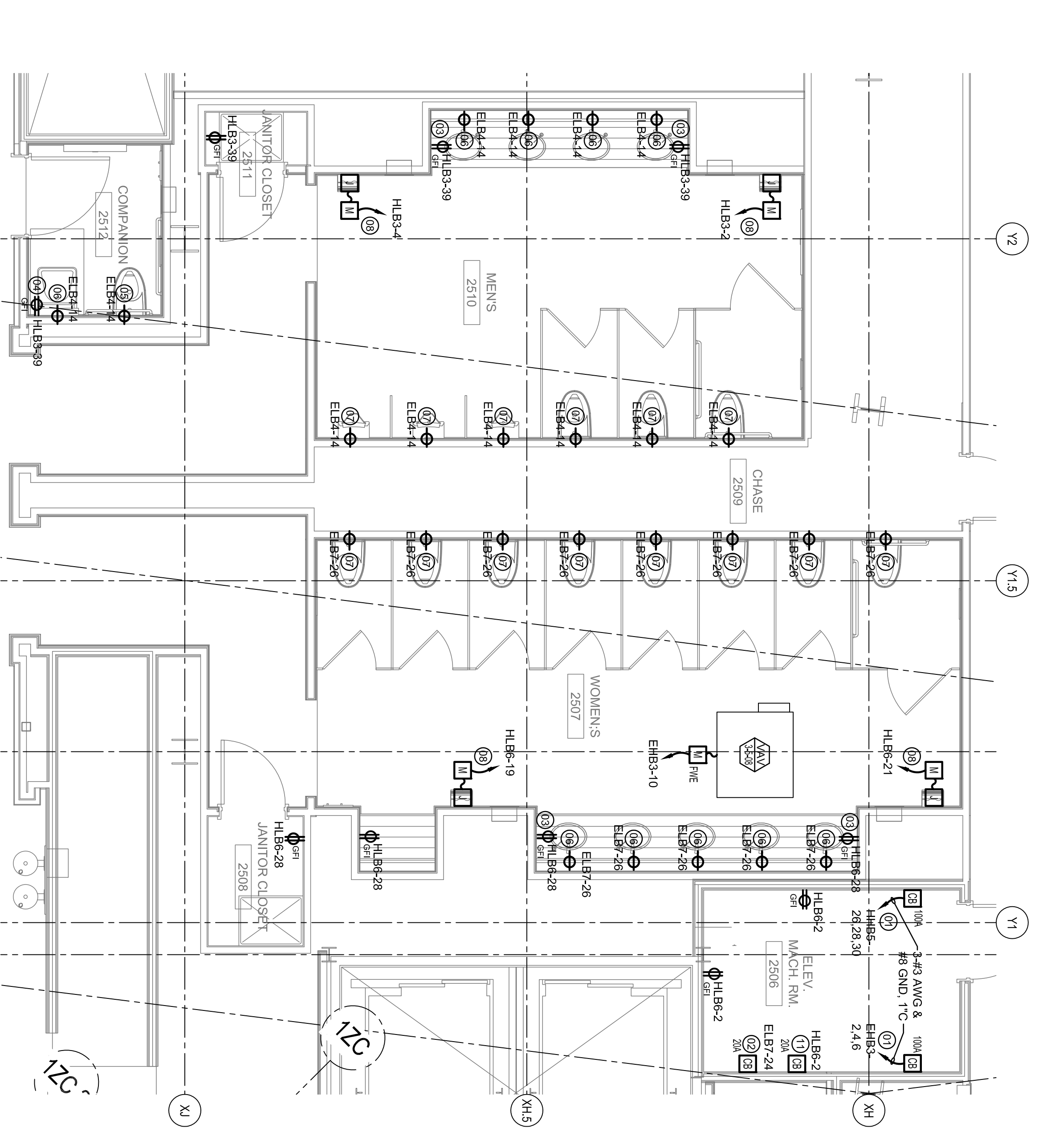
**Gensler**  
2001 K Street, NW  
Washington, DC 20006  
Telephone 202.221.5200  
Facsimile 202.672.5297

**oast** ASSOCIATES, INC.  
3400 Cornerstone Way, Suite 100, Portland, ME 04103  
Engineers • Architects • Surveyors • Construction Managers

- SHEET NOTES**
- 01 ELEVATOR DISCONNECT. MOUNT NEXT TO ELEVATOR CONTROLLER.
  - 02 ELEVATOR CAB LIGHTING DISCONNECT.
  - 03 MOUNT 6" ABOVE COUNTER.
  - 04 MOUNT 48" AFF.
  - 05 MOUNT RECEPTACLE BEHIND ACCESS PANEL FOR AUTOMATIC FLUSH VALVE. COORDINATE LOCATION WITH MECHANICAL.
  - 06 MOUNT RECEPTACLE UNDER COUNTER IN DISCRETE LOCATION FOR CONNECTION TO AUTOMATIC FLUSH VALVE. COORDINATE LOCATION WITH MECHANICAL.
  - 07 MOUNT RECEPTACLE IN CHASE FOR CONNECTION TO AUTOMATIC FLUSHING DEVICES.
  - 08 MOUNT MANUAL STARTER ON WALL BY HAND DRIVER.
  - 09 FUSE IN ACCORDANCE WITH NEG AND NAMEPLATE INSTRUCTIONS.
  - 10 JUNCTION BOX FOR CONNECTION TO DRAINING FOUNTAIN.
  - 11 ELEVATOR CAB LIGHTING DISCONNECT FOR ELEVATOR #7. CONTROLLER TO BE LOCATED IN SAME SPACE.



**2 ENLARGED PLAN**  
SCALE: 1/4" = 1'-0"



**1 ENLARGED PLAN**  
SCALE: 1/4" = 1'-0"

**GENERAL NOTES**

- A SEE SHEET E00.00 FOR LEGEND AND GENERAL NOTES.
- B CONTRACTOR SHALL REFER TO SECURITY, JT, AND PUBLIC ADDRESS SYSTEMS DRAWINGS FOR CONDUITS & WIRING REQUIREMENTS.

Revision	Date & Issue Description	By	Check
01	12/20/00	LAM	BHG
02	01/23/01	LAM	BHG
03	10/26/09	LAM	BHG

ISSUED FOR PERMIT

Project Name: PMA Terminal Enhancement  
 Project Number: 0305000  
 Contract Number: 0305000  
 Designer: T. GIBSON/SCHWABERLING  
 Description: ELECTRICAL ENLARGED PLANS  
 Scale: AS NOTED  
 AS V730

**E08.03**  
©2009 Gensler