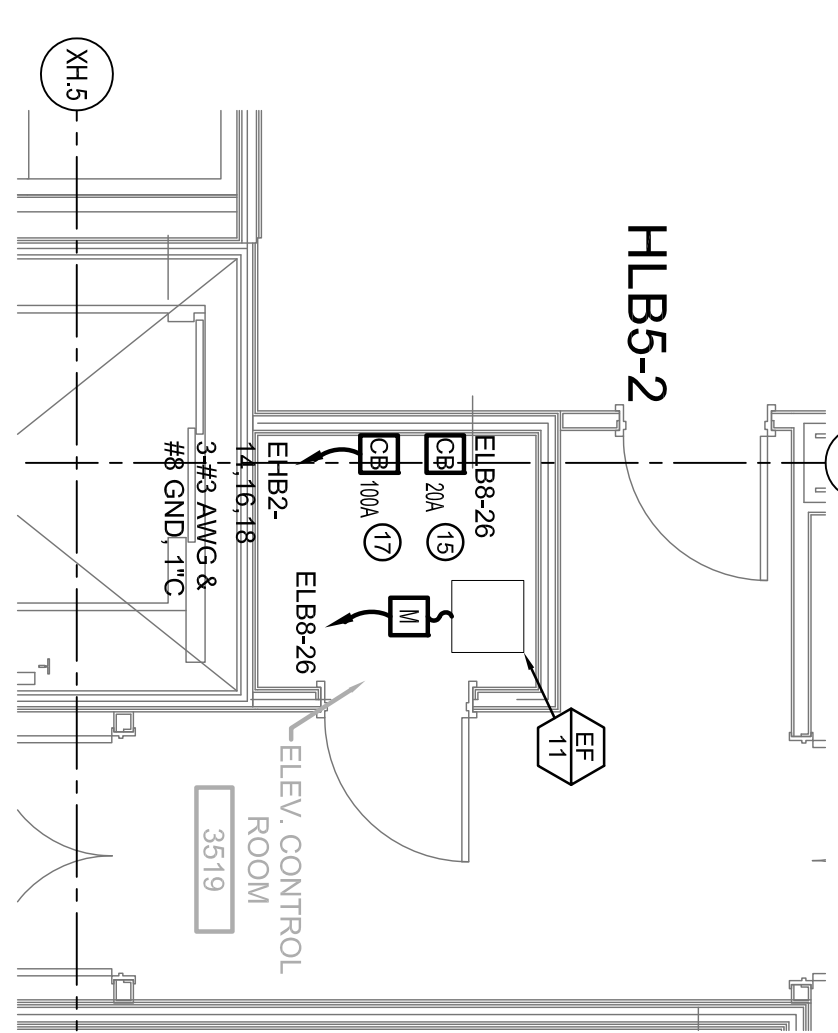
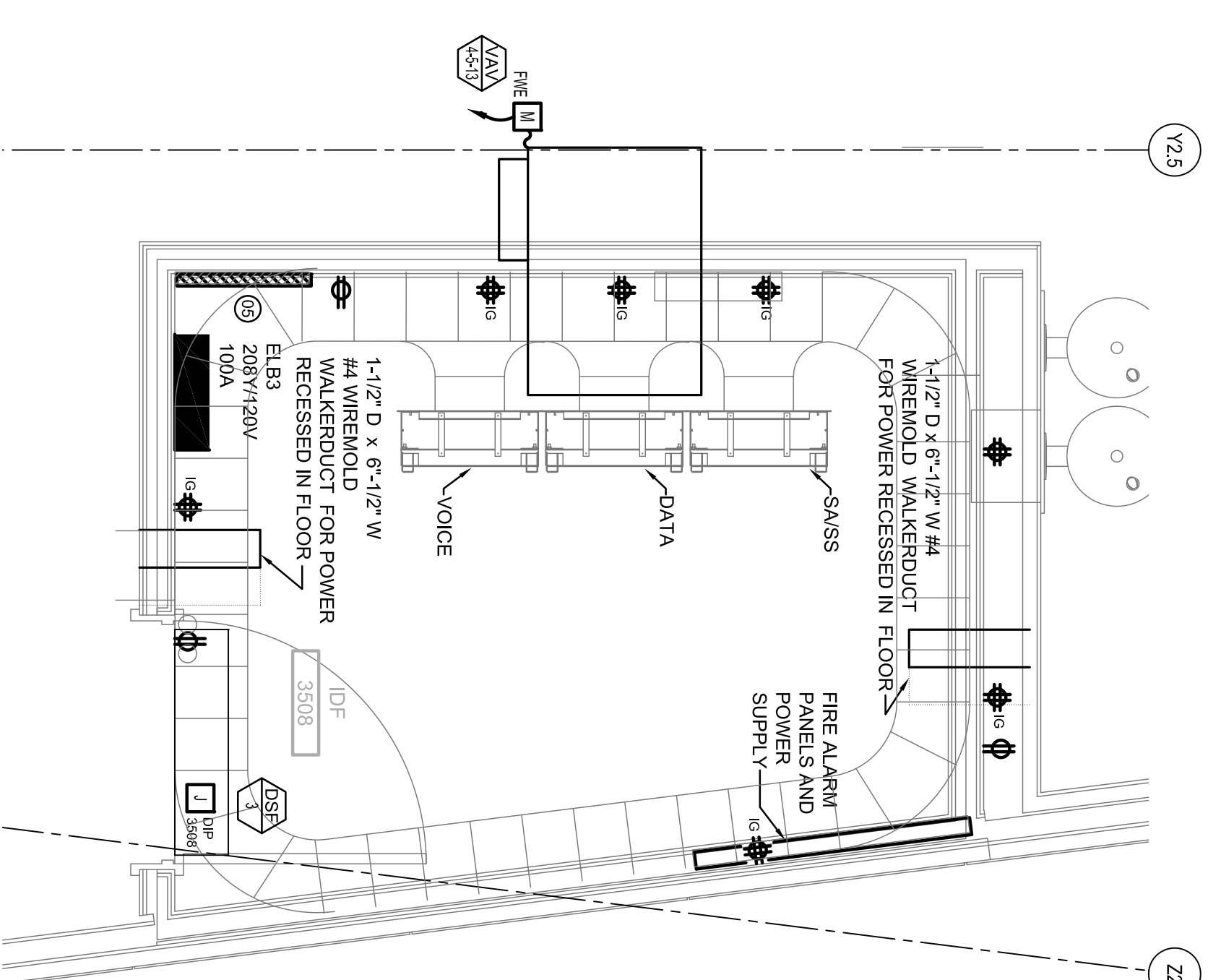


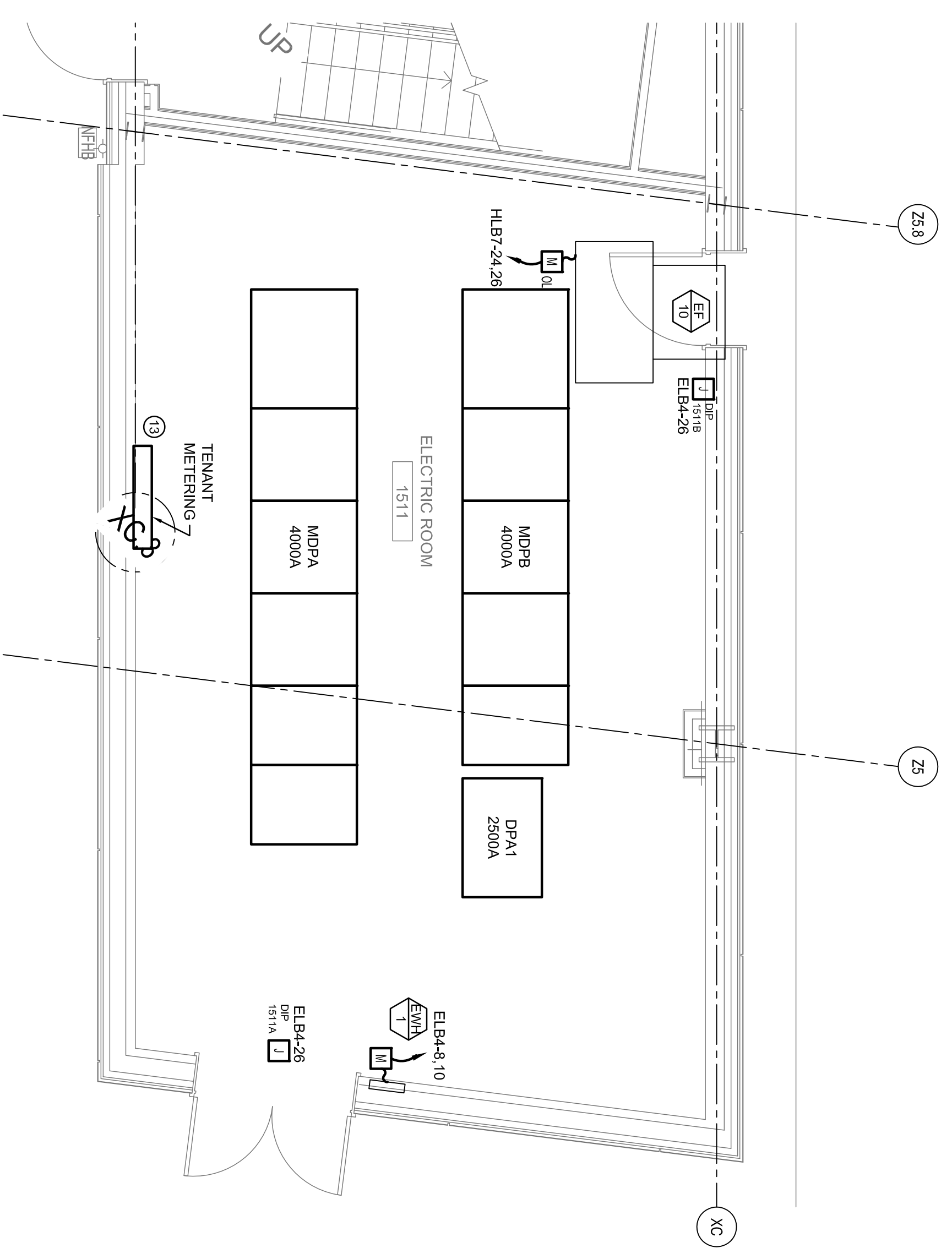
**5** GENERATOR ROOM 3517 & ELEC. CLOSET 3516 ENLARGED PLAN  
SCALE: 1/4" = 1'-0"



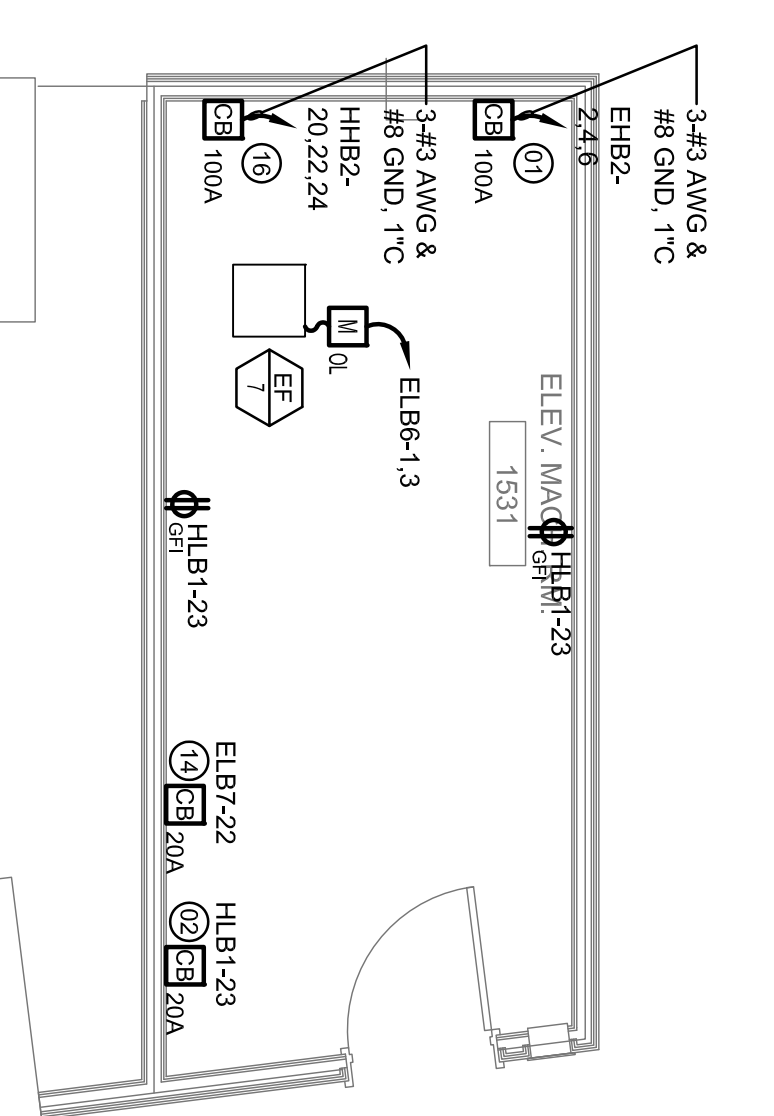
**6** ELEV. CONTROL RM 3519 ENLARGED PLAN  
SCALE: 1/4" = 1'-0"



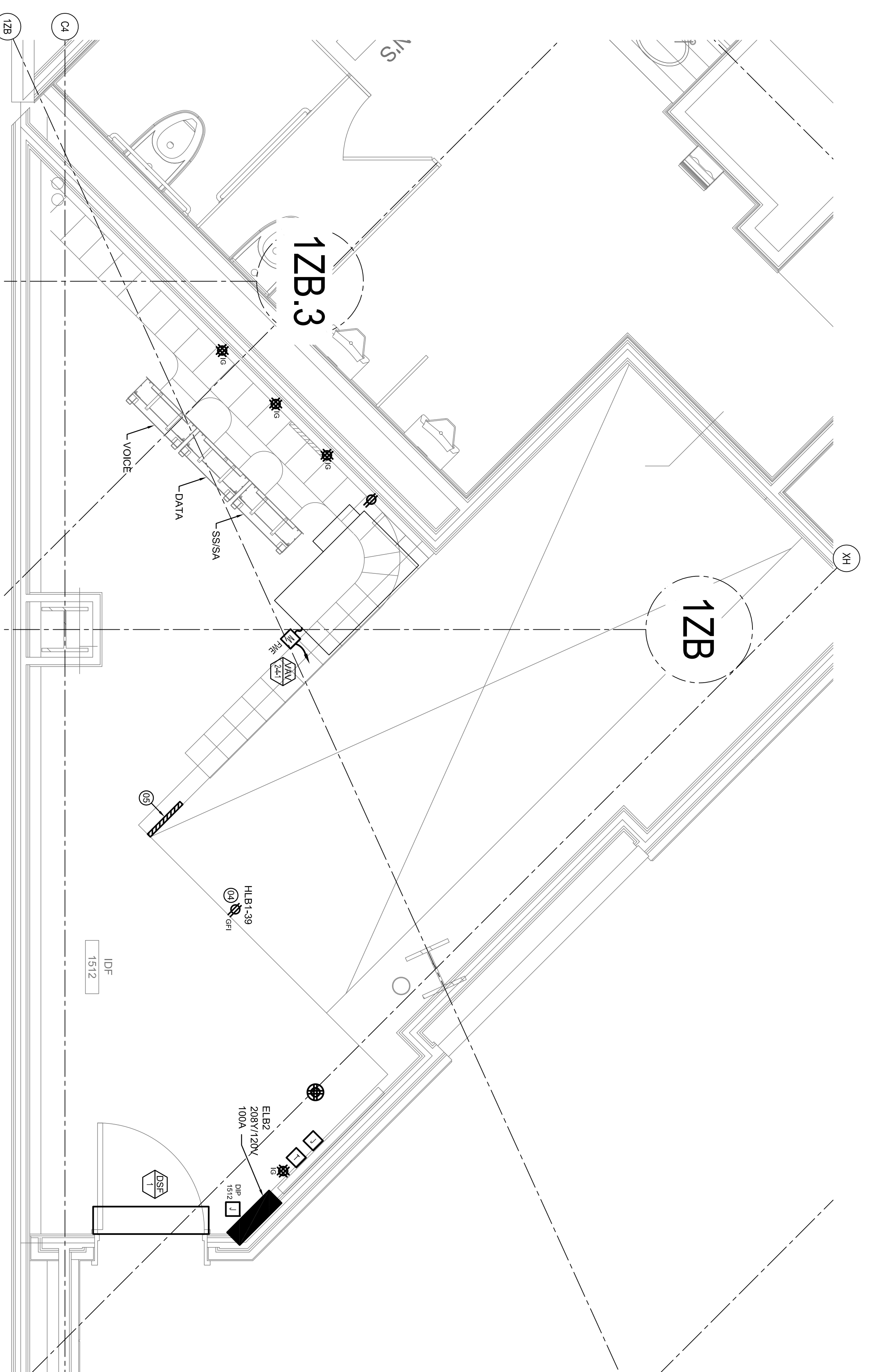
**2** ELEV. CONTROL 3509 & IDF 3508 ENLARGED PLAN  
SCALE: 1/2" = 1'-0"



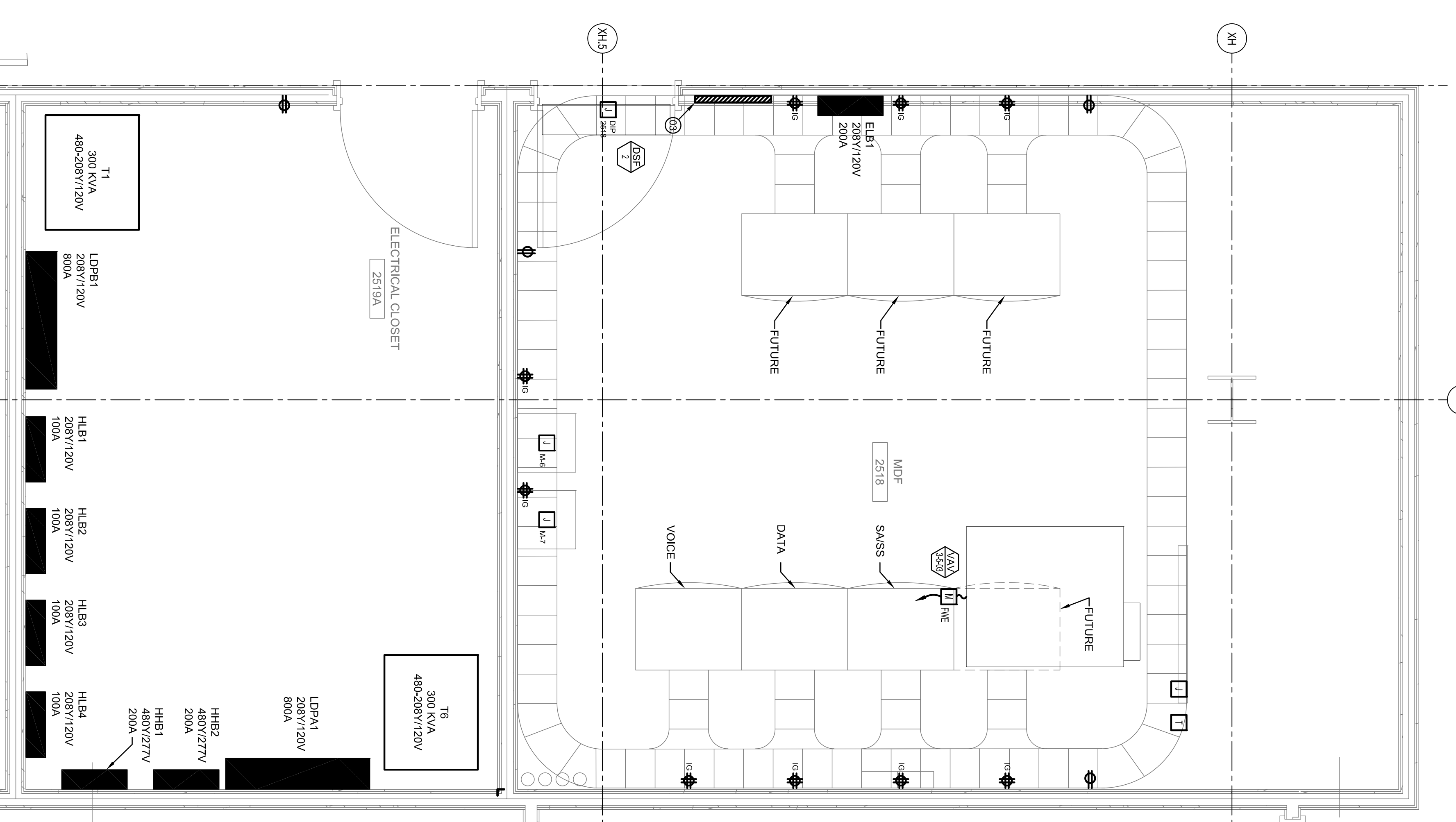
**4** ELECTRICAL ROOM ENLARGED PLAN  
SCALE: 1/4" = 1'-0"



**7** ELEV. CONTROL RM 1531 ENLARGED PLAN  
SCALE: 1/4" = 1'-0"



**3** IDF ROOM 1523 ENLARGED PLAN  
SCALE: 1/2" = 1'-0"



**1** MDF ROOM 2518 & ELECTRICAL CLOSET 2519 ENLARGED PLAN  
SCALE: 1/2" = 1'-0"

**SHEET NOTES**

- 01 ELEVATOR DISCONNECT, MOUNT NEXT TO ELEVATOR CONTROLLER.
- 02 ELEVATOR CAB LIGHTING DISCONNECT FOR ELEVATOR #8, MOUNT NEXT TO DISCONNECT AHEAD OF GFI LOCATED IN THE SAME SPACE.
- 03 1/4"x1/2" COPPER GROUNDING BAR MOUNTED A MINIMUM OF 2" OFF WALL ON INSULATED SUPPORTS. BAR SHALL BE PRE-DRILLED WITH HOLES THAT ACCEPT STANDARD SIZE LUGS. RUN 3/8" AWG BARE COPPER WIRE IN TUBING FROM BAR BACK TO MAIN SERVICE ENTRANCE GROUND & CONNECT VIA EXOTHERMIC WELD.
- 04 RECEPTACLE FOR CONNECTION TO CPUS FOR FIOS.
- 05 1/4"x1/2" COPPER GROUNDING BAR MOUNTED A MINIMUM OF 2" OFF WALL ON INSULATED SUPPORTS. BAR SHALL BE PRE-DRILLED WITH HOLES THAT ACCEPT STANDARD SIZE LUGS. RUN 3/8" AWG BARE COPPER WIRE IN TUBING FROM BAR BACK TO MAIN SERVICE ENTRANCE GROUND & CONNECT VIA EXOTHERMIC WELD.
- 06 PROVIDE 120V CIRCUIT FOR DSF CONDENSATE PUMP.
- 07 DSF-1 RECEIVES ITS POWER FROM DSF-1 LOCATED OUTSIDE ON SHEET E02.01. WIRE AS PER VENDOR INSTRUCTIONS.
- 08 COORDINATE EXACT LOCATION OF RECEPTACLES WITH COMMUNICATIONS DRAWINGS.
- 09 PROVIDE 120V CIRCUIT TO TRANSPONDER PANEL, COORDINATE EXACT LOCATION WITH COMMUNICATIONS DRAWINGS.
- 10 PROVIDE 120V CIRCUIT TO FIRE ALARM CONTROL PANEL, COORDINATE EXACT LOCATION WITH COMMUNICATION DRAWINGS.
- 11 DSF-2 RECEIVES ITS POWER FROM DSF-2 SHEET E02.01.8. CONTRACTOR TO PROVIDE CONDUIT & WIRE AS PER VENDOR INSTRUCTIONS.
- 12 DSF-3 RECEIVES ITS POWER FROM DSF-3 LOCATED OUTSIDE ON ROOF SHOWN ON SHEET E02.01.9. CONTRACTOR TO PROVIDE CONDUIT & WIRE AS PER VENDOR INSTRUCTIONS.
- 13 HIGH DENSITY METERING BY SQUARE D OR EQUAL, CONTRACTOR TO COORDINATE WITH VENDOR.
- 14 ELEVATOR CAB LIGHTING DISCONNECT FOR ELEVATOR #4.
- 15 ELEVATOR CAB LIGHTING DISCONNECT FOR ELEVATOR #8, CONTRACTOR TO WIRE DISCONNECT AHEAD OF GFI LOCATED IN THE SAME SPACE.
- 16 ELEVATOR #5 DISCONNECT, MOUNT NEXT TO ELEVATOR CONTROLLER.
- 17 ELEVATOR #6 DISCONNECT, MOUNT NEXT TO ELEVATOR CONTROLLER.

**GENERAL NOTES**

- A SEE SHEET E00.00 FOR LEGEND AND GENERAL NOTES.
- B CONTRACTOR SHALL REFER TO SECURITY, IT, AND PUBLIC ADDRESS SYSTEMS DRAWINGS FOR CONDUITS & WIRING REQUIREMENTS.

Issue	Date & Issue Description	By	Check
01	09/22/2018	LAM	BHG
02	12/03/2018	LAM	BHG
03	07/23/2019	LAM	BHG
04	10/26/2019	LAM	BHG

Subsignature

Project Name  
PMM Terminal Expansion/ret

Project Number  
1531  
Drawing Number  
E08.01  
Drawing Title  
ELECTRICAL ENLARGED PLANS

Scale  
AS NOTED

**E08.01**

©2008 Gensler

Portland International  
Jetport  
1001 Westbrook Street  
Portland, Maine 04102

**Gensler**  
2001 K Street, NW  
Suite 200  
Washington, DC 20006  
Telephone 202.221.2300  
Facsimile 202.972.5399

**oast ASSOCIATES, INC.**  
3600 Corporate Center Drive, Suite 400  
Portland, ME 04103  
Engineers • Architects • Surveyors • Construction Managers