

SHEET NOTES

01 PROVIDE CONVENIENCE LIGHT FIXTURE WITH SWITCH IN THE ESCALATOR LOWER LEVEL MACHINE SPACE COORDINATE LOCATION AND INSTALLATION WITH THE ESCALATOR CONTRACTOR.

Portland International

Jetport

1001 Westbrook Street
Portland, Maine 04102

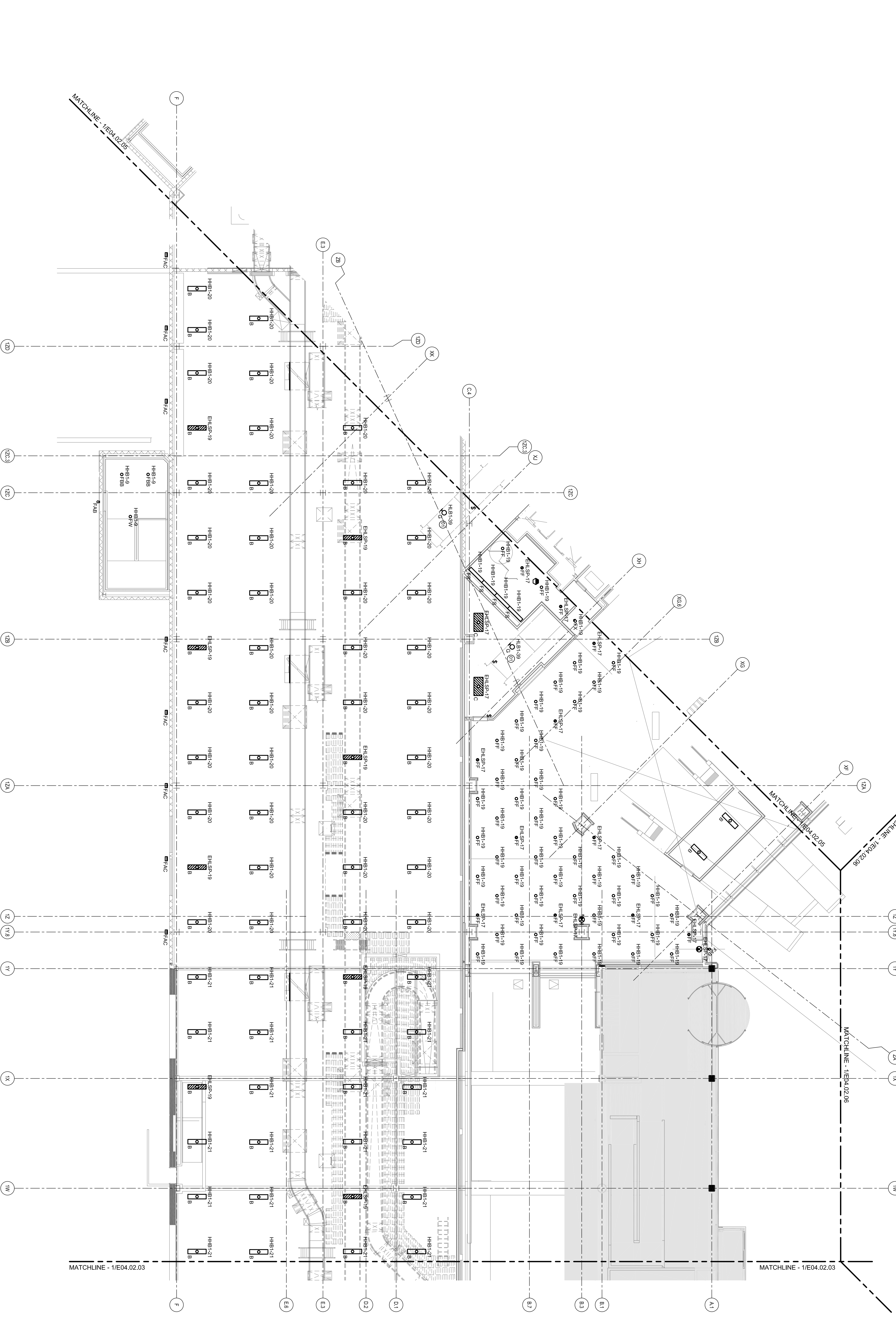
2024 N Street, NW
Suite 200
Washington, DC 20006
Telephone 202.721.5200
Facsimile 202.721.5207

Gensler

oast ASSOCIATES, INC.
2001 North Street, Suite 200
Portland, Maine 04102
Engineers • Architects • Planners • Construction Managers

Task	Date & Issue Description	By	Check
01	09/22/03 DESIGN COMMENT	LAM	BHG
02	12/03/03 75% CONSTRUCTION DOCUMENTS	LAM	BHG
03	01/23/04 90% CONSTRUCTION DOCUMENTS	LAM	BHG
04	10/26/09 ISSUED FOR PERMIT	LAM	BHG

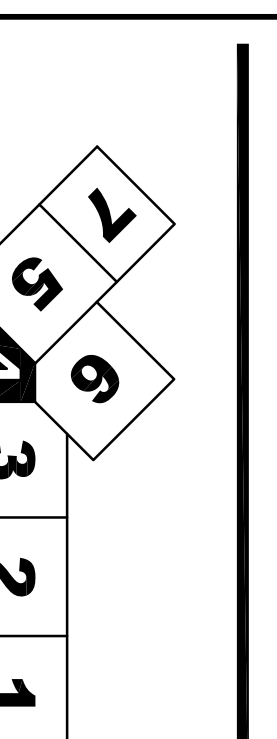
Project Name: PIM Terminal Enhancement
 Project Number: E04.02.04
 Design: TCS/STO/SWB/BL/2/4/ing
 Description: ELECTRICAL LIGHTING PLAN - LEVEL 2 - ZONE 4
 Scale: 1/8" = 1'-0"
 E04.02.04
 52001 Omaha



GENERAL NOTES

A SEE SHEET E00.00 FOR LEGEND AND GENERAL NOTES.

KEY PLAN



ELECTRICAL LIGHTING PLAN - LEVEL 2 - ZONE 4

SCALE: 1/8" = 1'-0"