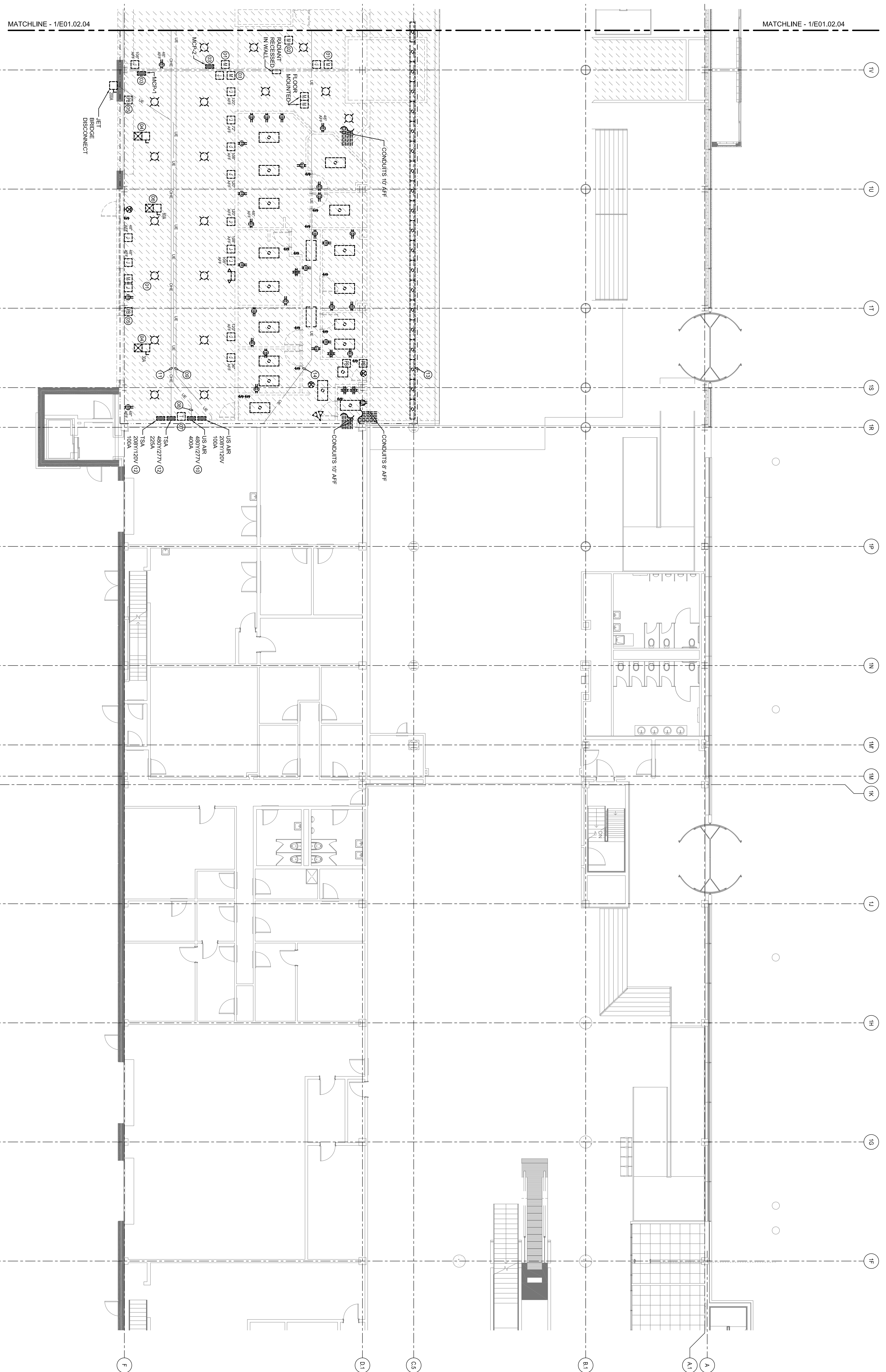


SHEET NOTES

- 01 REMOVE MANUAL MOTOR STARTER AS WELL AS CONDUIT & WIRE BACK TO SOURCE FOR BAGGAGE BELT SECURITY DOOR MOTOR.
- 02 REMOVE MANUAL MOTOR STARTER AS WELL AS CONDUIT & WIRE BACK TO SOURCE FOR BAGGAGE BELT MOTOR WHICH IS MOUNTED TO FLOOR.
- 03 REMOVE MOTOR CONTROL PANEL AND ALL ASSOCIATED CONDUIT & WIRE.
- 04 REMOVE DISCONNECTS, STARTER CONDUIT & WIRES FROM OVERHEAD DOOR MOTOR BACK TO SOURCE.
- 05 REMOVE PUSH BUTTON CONTROL FOR OVERHEAD DOOR. CONDUIT & WIRES SHALL BE REMOVED BACK TO SOURCE.
- 06 REMOVE DISCONNECT AND STARTER AS WELL AS CONDUIT AND WIRE BACK TO SOURCE FOR OVERHEAD MECHANICAL UNIT.
- 07 TWO 20 KVA TRANSFORMERS STACKED ON TOP OF EACH OTHER. TOP TRANSFORMER TO BE RELOCATED. BOTTOM TRANSFORMER TO BE DEMOUNTED AND RELOCATED TO NEW LOCATION OF RELOCATED TRANSFORMER.
- 08 APPROXIMATE LOCATION OF UNDERGROUND FEEDER TO LEFT BRIDGE DISCONNECT.
- 09 APPROXIMATE LOCATION OF UNDERGROUND FEEDER FOR EXTERIOR LIGHTS. CONTRACTOR SHALL RELOCATE THIS FEEDER DEEPER TO REMAIN UNDER NEW FLOOR ELEVATION.
- 10 400 AMP, 480V FEEDER TO US AIR PANEL. SHALL BE EXTENDED UNDERGROUND TO NEW 400 AMP JET BRIDGE DISCONNECT OF LEFT BRIDGE DISCONNECT.
- 11 OVERHEAD FEEDER TO TSA 480V PANEL. CONTRACTOR SHALL RELOCATE AS POSSIBLE AND COORDINATED WITH BAGGAGE HANDLING EQUIPMENT. FEEDER SHALL BE RUN TO NEW LOCATION OF TSA 480V PANEL. SHOWN ON SHEET E01.02.03.
- 12 PANELS AND ALL CIRCUITS TO BE RELOCATED. SEE POWER PLAN E02.02.03 FOR NEW LOCATIONS.
- 13 ALL EXISTING OVERHEAD CONDUITS IN THIS AREA SHALL BE TRACED AND IF BELONGING TO THIS PROJECT AS POSSIBLE, ROUTING SHALL BE COORDINATED WITH NEW BAGGAGE HANDLING SYSTEM. SEE BAGGAGE HANDLING DRAWINGS FOR CONDUIT & CONDUCTORS AS NECESSARY.
- 14 APPROXIMATE LOCATION OF OLD DELTA 4" TEL CONDUIT. CONTRACTOR SHALL RELOCATE AS NECESSARY TO ACCOMMODATE NEW FLOOR ELEVATION.

GENERAL NOTES

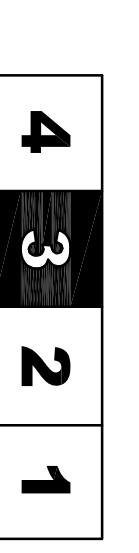
- A SEE SHEET E00.00 FOR LEGEND AND GENERAL NOTES.
- B ALL DEVICES BEING REMOVED SHALL HAVE ALL ASSOCIATED CONDUIT & WIRING REMOVED BACK TO SOURCE.



MATCHLINE - 1/E01.02.04

MATCHLINE - 1/E01.02.04

KEY PLAN



Revision	Date & Issue Description	By	Check
01	12/20/02 50% CONSTRUCTION DOCUMENTS	LAM	BHG
02	01/23/03 50% CONSTRUCTION DOCUMENTS	LAM	BHG
03	10/26/03 ISSUED FOR PERMIT	LAM	BHG

Project Name: PMA Terminal Enhancement
 Project Number: E01.02.03
 Date: 10/26/03
 Description: ELECTRICAL DEMOLITION PLAN - LEVEL 2 - ZONE 3
 Scale: 1/8" = 1'-0"

