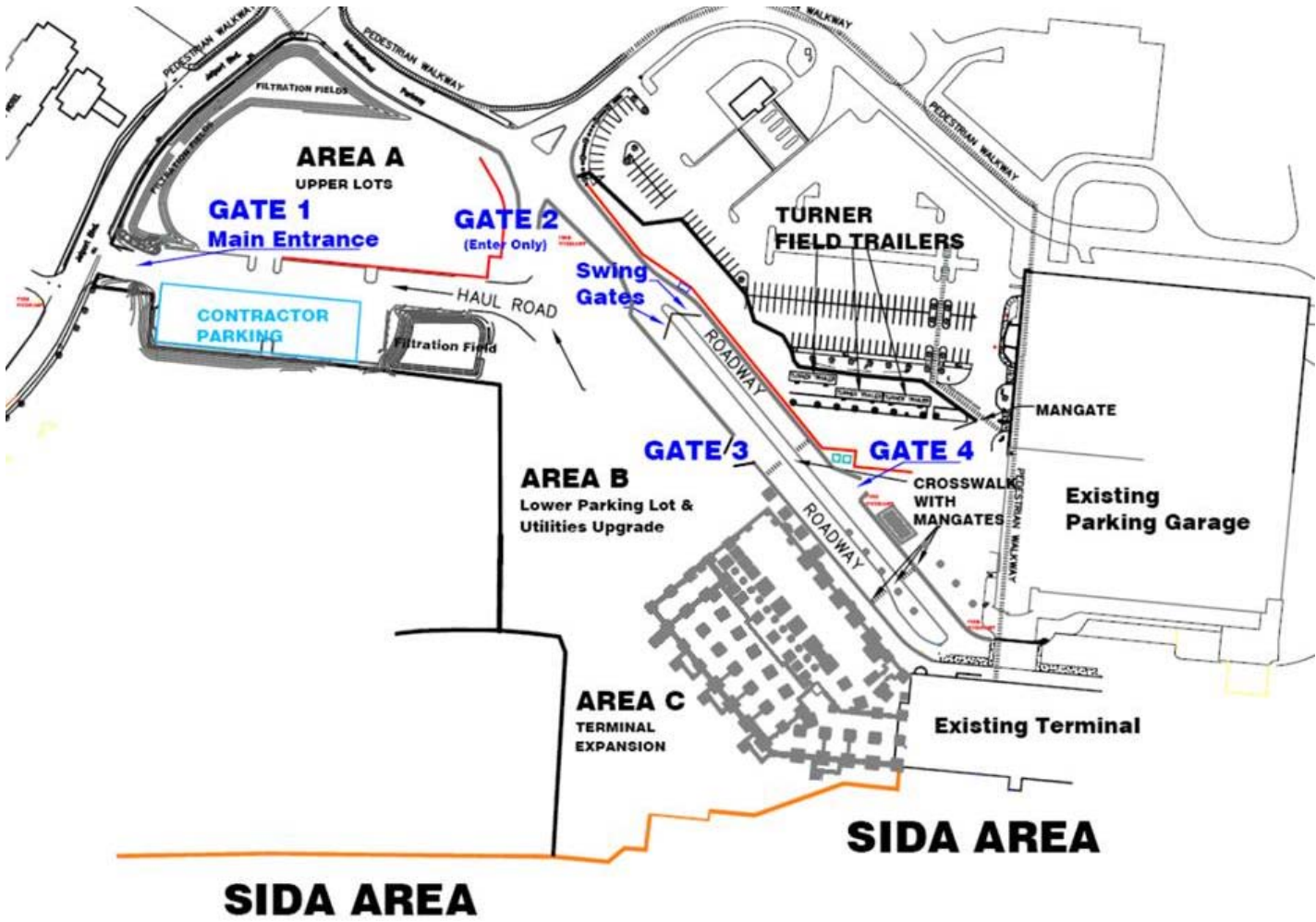


9/7/2010

Portland International Jetport Expansion Progress Report

Viewed best in full screen



Area C

View of steel erection for new terminal expansion



Area C  
Connecting steel in Zone 5

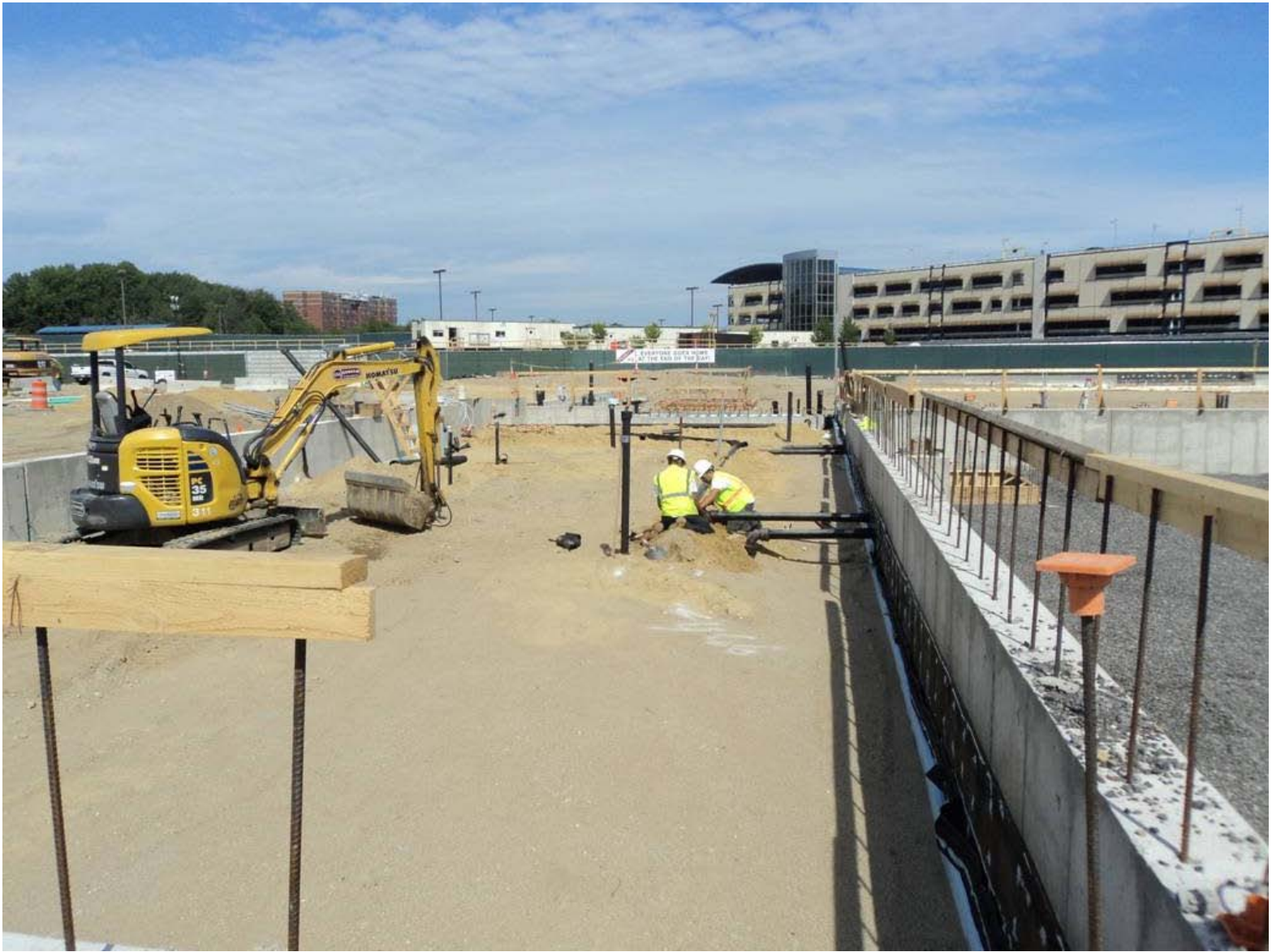


Area C  
Installing truss section for tower crane





Area B  
Installing underground plumbing lines in Zone 5 west end



Area B  
Grading for new employee parking lot



Area B  
Paving for new employee parking lot at west end of site



Portland International Jetport  
**Terminal Expansion**

Coming  
Spring 2012

*We're on our way to serving Maine better!*



Owner:  
**PWM**  
Portland International Jetport



Architect:  
**Gensler**  
Boston, MA

Construction Manager:  
**Turner**  
Boston, MA

Engineer:  
**amec**  
South Portland, ME  
formerly GEST Associates, Inc.

[www.portlandjetport.org](http://www.portlandjetport.org)

Please let me know of anyone else who would like to be added to the email distribution list.

Thanks and have a great weekend.

Ryan Dixon  
Turner Construction  
Portland International Airport  
23 International Pkwy  
Portland, ME 04102  
c. 617-590-0872