

R. W. Gillespie & Associates, Inc.

86 Industrial Park Road, Suite 4, Saco, ME 04072 207-286-8008
200 International Drive, Suite 170, Portsmouth, NH 03801 603-427-0244

LETTER OF TRANSMITTAL

City of Portland, Portland Int. Jetport

1001 Westbrook Street

Portland, Maine 04102

Date:	01 Dec 2010	Project No.:	557-14
Attention:	Mr. Cuyler Feagles (cmf@portlandmaine.gov)		
Re:	Concrete Testing Terminal Enhancement, Portland Int. Jetport Portland, Maine		

We are sending you attached concrete cylinder test results.

Cylinder No. (s)	Age (Days)
67862	7
67866	7
67870	7
67874	7

Remarks:

Copy To:
Roy Williams: rsw@portlandmaine.gov
Jim Stanislaski: jim_stanislaski@gensler.com
Cliff Takara: clifford_takara@gensler.com
Lacey Fogg: Lacey.Fogg@amec.com
Mike Fusco: mfusco@tcco.com
Shaun Winner: swinner@tcco.com
Phil Coleman: pcoleman@tcco.com
Elizabeth O'Toole: eotoole@tcco.com
TMM@portlandmaine.gov
ldobson@portlandmaine.gov
rdixon@tcco.com
gemitchell@tcco.com
Remi Delcourt (remi@auburnconcrete.com)
Jeff Evans, Amec (jeff.evans@amec.com)

Signed: Bertha Dawn

If enclosures are not as noted, kindly notify us at once.

R. W. GILLESPIE & ASSOCIATES, INC.

86 Industrial Park Road, Suite 4, Saco, ME 04072 207-286-8008
 200 International Drive, Suite 170, Portsmouth, NH 03801 603-427-0244

CONCRETE TEST/PLACEMENT REPORT

Project Name: Terminal Enhancement, Portland Int. Jetport
Project No: 557-14
Weather Conditions: Clear
Method of Placement: Pump
Admixtures: Mid Range Water Reducer, Pozzutec +20
Placement Location: Equipment Pads, Fourth Floor Connector
Test Cylinder Location: See Sketch

Date Cylinders Cast: 24-Nov-10
Concrete Supplier: Auburn
General Contractor: Turner
Design Strength: 3,500
Max Agg. Size: 3/4

Date Report Issued:

4x8 Cylinders	4	Cast by	Erik E. Cohenour		
Load No.	2	Slump (in) ASTM C 143	6.0	Time	Batched @
Ticket No.	179551	Air (°F)	38		Arrived @
Truck No.	116	Concrete (°F) ASTM C 1064	68		Total Time
Cubic Yds.	10	Air Content (%) ASTM C 231	3.5		--
					12:14

*Concrete sampled by ASTM C 172

Specimen Storage ASTM C 31: Field cure days: 5
 Date received 29-Nov-10
 Condition of Cylinders: Good

Lab No.	Test Date	Avg Dia (in)	Area (in ²)	Age (Days)	Load (lbs)	Compressive Strength (psi)	Break type
67862	01-Dec-10	4.004	12.59	7	52,380	4160	5
67863	22-Dec-10			28			
67864	22-Dec-10			28			
67865	HOLD			HOLD			

*Concrete compressive strength by ASTM C 39

Types of Breaks



Cone
1



Cone & Split
2



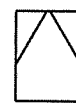
Columnar
3



Shear
4



Side Fracture
5



Double Side Fracture
6

Load	Ticket Number	Truck Number	Cubic Yds	Slump (inches)	Air Temp (°F)	Conc Temp (°F)	(%) Air Content	Time (min.)
1	179550	101	--	--	--	--	--	--

Remarks:

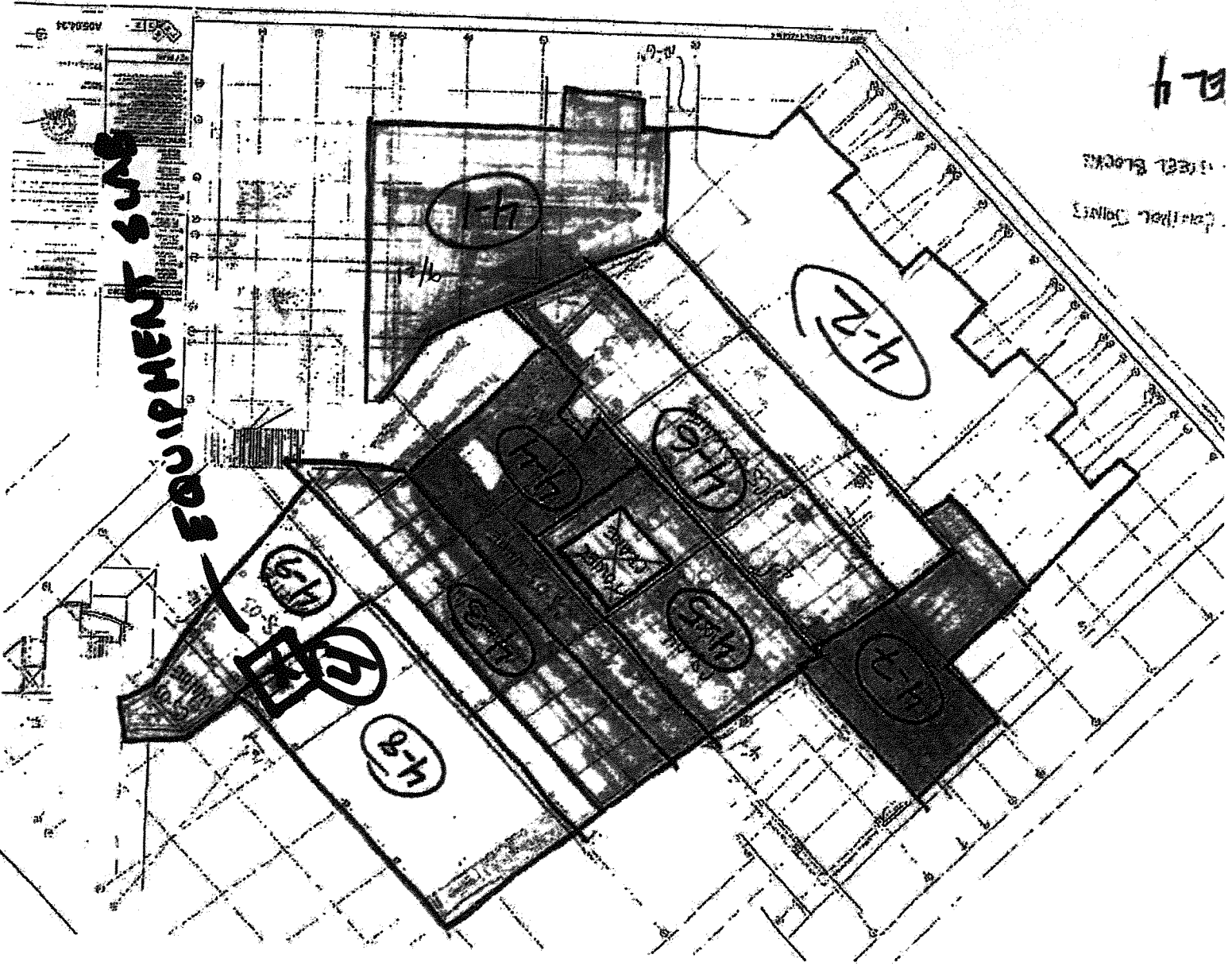
Checked by: Matthew T. Grady
 MTR Matthew T. Grady, Manager of MTS

557-14

PORTLAND SETPOINT

EEC

11/24/11



EQUIPMENT SUBS

24

STEEL BLOCKS
CONCRETE CORES

R. W. GILLESPIE & ASSOCIATES, INC.

86 Industrial Park Road, Suite 4, Saco, ME 04072 207-286-8008
 200 International Drive, Suite 170, Portsmouth, NH 03801 603-427-0244

CONCRETE TEST/PLACEMENT REPORT

Project Name: Terminal Enhancement, Portland Int. Jetport
Project No: 557-14
Weather Conditions: Clear
Method of Placement: Pump
Admixtures: Mid Range Water Reducer
Placement Location: Slab On Grade, Road Entrances
Test Cylinder Location: North Entrance

Date Cylinders Cast: 24-Nov-10
Concrete Supplier: Auburn
General Contractor: Turner
Design Strength: 3,500
Max Agg. Size: 3/4

Date Report Issued:

4x8 Cylinders	4	Cast by	Erik E. Cohenour	Time	
Load No.	2	Slump (in) ASTM C 143	6.0	Batched @	--
Ticket No.	179313	Air (°F)	38	Arrived @	--
Truck No.	85	Concrete (°F) ASTM C 1064	66	Total Time	--
Cubic Yds.	9	Air Content (%) ASTM C 231	3.8		

*Concrete sampled by ASTM C 172

Specimen Storage ASTM C 31: Field cure days: 5
 Date received 29-Nov-10
 Condition of Cylinders: Good

Lab No.	Test Date	Avg Dia (in)	Area (in ²)	Age (Days)	Load (lbs)	Compressive Strength (psi)	Break type
67866	01-Dec-10	4.004	12.59	7	37,680	2990	5
67867	22-Dec-10			28			
67868	22-Dec-10			28			
67869	HOLD			HOLD			

*Concrete compressive strength by ASTM C 39

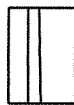
Types of Breaks



Cone
1



Cone & Split
2



Columnar
3



Shear
4



Side Fracture
5



Double Side Fracture
6

Load	Ticket Number	Truck Number	Cubic Yds	Slump (inches)	Air Temp (°F)	Conc Temp (°F)	(%) Air Content	Time (min.)
1	176312	116	10	--	--	--	--	--

Remarks:

Checked by: Matthew T. Grady
 For Matthew T. Grady, Manager of MTS

R. W. GILLESPIE & ASSOCIATES, INC.

86 Industrial Park Road, Suite 4, Saco, ME 04072 207-286-8008
200 International Drive, Suite 170, Portsmouth, NH 03801 603-427-0244

CONCRETE TEST/PLACEMENT REPORT

Project Name: Terminal Enhancement, Portland Int. Jetport
Project No: 557-14
Weather Conditions: Clear
Method of Placement: Pump
Admixtures: Mid Range Water Reducer, Pozzutec +20
Placement Location: Slab On Grade
Test Cylinder Location: See Sketch

Date Cylinders Cast: 24-Nov-10
Concrete Supplier: Auburn
General Contractor: Turner
Design Strength: 3,500
Max Agg. Size: 3/8

Date Report Issued:

4x8 Cylinders	4	Cast by	Erik E. Cohenour	Time	
Load No.	2	Slump (in) ASTM C 143	6.25	Batched @	--
Ticket No.	179535	Air (°F)	38	Arrived @	--
Truck No.	101	Concrete (°F) ASTM C 1064	67	Total Time	--
Cubic Yds.	10	Air Content (%) ASTM C 231	3.7		

*Concrete sampled by ASTM C 172

Specimen Storage ASTM C 31: Field cure days: 5
 Date received 29-Nov-10
 Condition of Cylinders: Good

Lab No.	Test Date	Avg Dia (in)	Area (in ²)	Age (Days)	Load (lbs)	Compressive Strength (psi)	Break type
67870	01-Dec-10	4.004	12.59	7	46,420	3690	5
67871	22-Dec-10			28			
67872	22-Dec-10			28			
67873	HOLD			HOLD			

*Concrete compressive strength by ASTM C 39

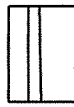
Types of Breaks



Cone
1



Cone & Split
2



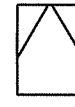
Columnar
3



Shear
4



Side Fracture
5



Double Side Fracture
6

Load	Ticket Number	Truck Number	Cubic Yds	Slump (inches)	Air Temp (°F)	Conc Temp (°F)	(%) Air Content	Time (min.)
1	179531	86	10	--	--	--	--	--
3	179536	98	10	--	--	--	--	--
4	179537	84	10	--	--	--	--	--
5	179538	86	10	--	--	--	--	--
6	179539	101	10	--	--	--	--	--

Remarks:

Checked by: Matthew T. Grady
 FOR Matthew T. Grady, Manager of MTS

R. W. GILLESPIE & ASSOCIATES, INC.

86 Industrial Park Road, Suite 4, Saco, ME 04072 207-286-8008
 200 International Drive, Suite 170, Portsmouth, NH 03801 603-427-0244

CONCRETE TEST/PLACEMENT REPORT

Project Name:	Terminal Enhancement, Portland Int. Jetport	Date Cylinders Cast:	24-Nov-10
Project No:	557-14	Concrete Supplier:	Auburn
Weather Conditions:	Clear	General Contractor:	Turner
Method of Placement:	Pump	Design Strength:	3,500
Admixtures:	Mid Range Water Reducer, Pozzutec +20	Max Agg. Size:	3/8
Placement Location:	Slab On Grade		
Test Cylinder Location:	See Sketch		

Date Report Issued:

4x8 Cylinders	4	Cast by	Erik E. Cohenour	
Load No.	8	Slump (in) ASTM C 143	5.0	Time Batched @ -- Arrived @ -- Total Time --
Ticket No.	179541	Air (°F)	38	
Truck No.	84	Concrete (°F) ASTM C 1064	68	
Cubic Yds.	10	Air Content (%) ASTM C 231	4.1	

*Concrete sampled by ASTM C 172

Specimen Storage ASTM C 31: Field cure days: 5

Date received 29-Nov-10

Condition of Cylinders: Good

Lab No.	Test Date	Avg Dia (in)	Area (in ²)	Age (Days)	Load (lbs)	Compressive Strength (psi)	Break type
67874	01-Dec-10	4.004	12.59	7	49,560	3940	5
67875	22-Dec-10			28			
67876	22-Dec-10			28			
67877	HOLD			HOLD			

*Concrete compressive strength by ASTM C 39

Types of Breaks



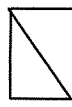
Cone
1



Cone & Split
2



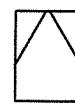
Columnar
3



Shear
4



Side Fracture
5

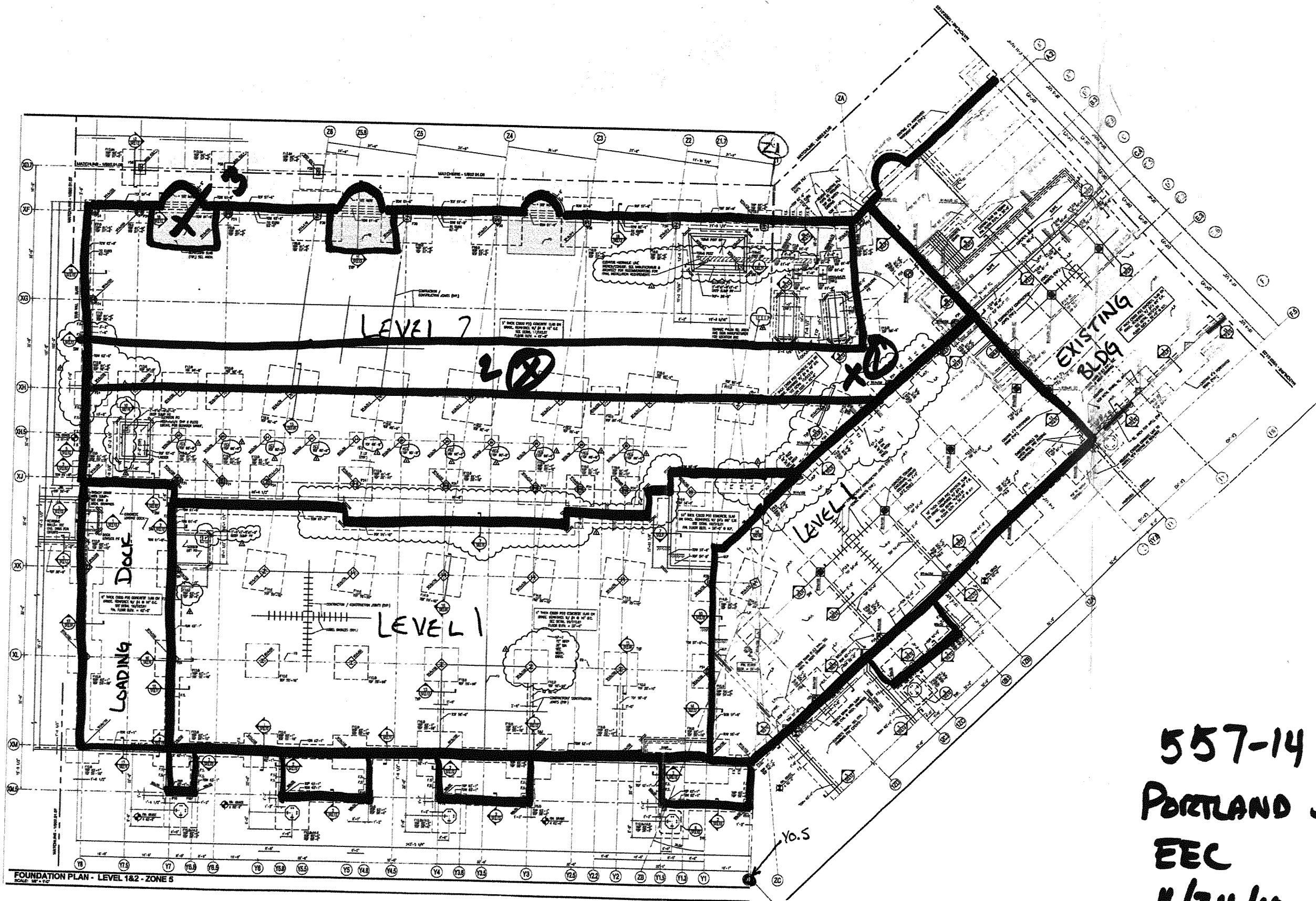


Double Side Fracture
6

Load	Ticket Number	Truck Number	Cubic Yds	Slump (inches)	Air Temp (°F)	Conc Temp (°F)	(%) Air Content	Time (min.)
7	179540	98	10	--	--	--	--	--
9	179543	86	10	--	--	--	--	--
10	179545	101	10	--	--	--	--	--
11	179547	84	3	--	--	--	--	--

Remarks:

Checked by: Don Chennery
 FOR Matthew T. Grady, Manager of MTS



557-14
 PORTLAND JETPORT
 EEC
 11/24/10