

R. W. Gillespie & Associates, Inc.

86 Industrial Park Road, Suite 4, Saco, ME 04072 207-286-8008
200 International Drive, Suite 170, Portsmouth, NH 03801 603-427-0244

LETTER OF TRANSMITTAL

City of Portland, Portland Int. Jetport
1001 Westbrook Street
Portland, Maine 04102

Date:	23 November 2010	Project No.:	557-14
Attention:	Mr. Cuyler Feagles (cmf@portlandmaine.gov)		
Re:	Concrete Testing Terminal Enhancement, Portland Int. Jetport Portland, Maine		

We are sending you attached concrete cylinder test results.

Cylinder No. (s)	Age (Days)
67799	7
67803	7
67807	7
67811	7

Remarks:

Copy To:
Roy Williams: rsw@portlandmaine.gov
Jim Stanislaski: jim_stanislaski@gensler.com
Cliff Takara: clifford_takara@gensler.com
Lacey Fogg: Lacey.Fogg@amec.com
Mike Fusco: mfusco@tcco.com
Shaun Winner: swinner@tcco.com
Phil Coleman: pcoleman@tcco.com
Elizabeth O'Toole: eotoole@tcco.com
TMM@portlandmaine.gov
ldobson@portlandmaine.gov
rdixon@tcco.com
gemitchell@tcco.com
Remi Delcourt (remi@auburnconcrete.com)
Jeff Evans, Amec (jeff.evans@amec.com)

Signed: Bertha Dawn

If enclosures are not as noted, kindly notify us at once.

R. W. GILLESPIE & ASSOCIATES, INC.

86 Industrial Park Road, Suite 4, Saco, ME 04072 207-286-8008
200 International Drive, Suite 170, Portsmouth, NH 03801 603-427-0244

CONCRETE TEST/PLACEMENT REPORT

Project Name: Terminal Enhancement, Portland Int. Jetport
Project No: 557-14
Weather Conditions: Overcast
Method of Placement: Pump
Admixtures: Mid Range Water Reducer, 1% Pozzutec 20+
Placement Location: Slab-On-Grade Level 2
Test Cylinder Location: See Sketch

Date Cylinders Cast: 16-Nov-10
Concrete Supplier: Auburn
General Contractor: Turner
Design Strength: 3,000
Max Agg. Size: 3/8

Date Report Issued: **NOV 23 2010**

4x8 Cylinders	4	Cast by	Michael J. Kramlich	Time	
Load No.	2	Slump (in) ASTM C 143	5.5	Batched @	7:15
Ticket No.	179378	Air (°F)	47	Arrived @	7:35
Truck No.	98	Concrete (°F) ASTM C 1064	69	Total Time	30
Cubic Yds.	10	Air Content (%) ASTM C 231	3.2		

*Concrete sampled by ASTM C 172

Specimen Storage ASTM C 31: Field cure days: 1
 Date received 17-Nov-10
 Condition of Cylinders: Good

Lab No.	Test Date	Avg Dia (in)	Area (in ²)	Age (Days)	Load (lbs)	Compressive Strength (psi)	Break type
67799	23-Nov-10	4.015	12.66	7	64,360	5080	2
67800	14-Dec-10			28			
67801	14-Dec-10			28			
67802	HOLD			HOLD			

*Concrete compressive strength by ASTM C 39

Types of Breaks



Cone
1



Cone & Split
2



Columnar
3



Shear
4



Side Fracture
5



Double Side
Fracture
6

Load	Ticket Number	Truck Number	Cubic Yds	Slump (inches)	Air Temp (°F)	Conc Temp (°F)	(%) Air Content	Time (min.)
1	179376	97	10	--	--	--	--	45
3	--	--	--	--	--	--	--	--
4	179380	84	10	--	--	--	--	55
5	179381	99	10	--	--	--	--	45

Remarks: Total Loads: 14

Checked by:
 For Matthew T. Grady, Manager of MTS

R. W. GILLESPIE & ASSOCIATES, INC.

86 Industrial Park Road, Suite 4, Saco, ME 04072 207-286-8008
200 International Drive, Suite 170, Portsmouth, NH 03801 603-427-0244

CONCRETE TEST/PLACEMENT REPORT

Project Name: Terminal Enhancement, Portland Int. Jetport
Project No: 557-14
Weather Conditions: Overcast
Method of Placement: Pump
Admixtures: Mid Range Water Reducer, 1% Pozzutec 20+
Placement Location: Slab-On-Grade Level 2
Test Cylinder Location: See Sketch

Date Cylinders Cast: 16-Nov-10
Concrete Supplier: Auburn
General Contractor: Turner
Design Strength: 3,000
Max Agg. Size: 3/8

Date Report Issued: **NOV 23 2010**

4x8 Cylinders	4	Cast by	Michael J. Kramlich	Time	
Load No.	6	Slump (in) ASTM C 143	3	Batched @	7:54
Ticket No.	179382	Air (°F)	48	Arrived @	8:20
Truck No.	83	Concrete (°F) ASTM C 1064	67	Total Time	40
Cubic Yds.	10	Air Content (%) ASTM C 231	3.7		

*Concrete sampled by ASTM C 172

Specimen Storage ASTM C 31: Field cure days: 1
 Date received 17-Nov-10
 Condition of Cylinders: Good

Lab No.	Test Date	Avg Dia (in)	Area (in ²)	Age (Days)	Load (lbs)	Compressive Strength (psi)	Break type
67803	23-Nov-10	4.015	12.66	7	65,580	5180	5
67804	14-Dec-10			28			
67805	14-Dec-10			28			
67806	HOLD			HOLD			

*Concrete compressive strength by ASTM C 39

Types of Breaks



Cone
1



Cone & Split
2



Columnar
3



Shear
4



Side Fracture
5



Double Side Fracture
6

Load	Ticket Number	Truck Number	Cubic Yds	Slump (inches)	Air Temp (°F)	Conc Temp (°F)	(%) Air Content	Time (min.)
7	179383	97	10	--	--	--	--	45
8	179384	98	10	--	--	--	--	45
9	179385	96	10	--	--	--	--	40
10	179386	84	10	--	--	--	--	40

Remarks: Total Loads: 14

Checked by: *Matthew T. Grady*
 For Matthew T. Grady, Manager of MTS

R. W. GILLESPIE & ASSOCIATES, INC.

86 Industrial Park Road, Suite 4, Saco, ME 04072 207-286-8008
200 International Drive, Suite 170, Portsmouth, NH 03801 603-427-0244

CONCRETE TEST/PLACEMENT REPORT

Project Name: Terminal Enhancement, Portland Int. Jetport
Project No: 557-14
Weather Conditions: Overcast
Method of Placement: Pump
Admixtures: Mid Range Water Reducer, 1% Pozzutec 20+
Placement Location: Slab-On-Grade Level 2
Test Cylinder Location: See Sketch

Date Cylinders Cast: 16-Nov-10
Concrete Supplier: Auburn
General Contractor: Turner
Design Strength: 3,000
Max Agg. Size: 3/8

Date Report Issued: **NOV 23 2010**

4x8 Cylinders	4	Cast by	Michael J. Kramlich	Time	
Load No.	11	Slump (in) ASTM C 143	3.25	Batched @	9:03
Ticket No.	179387	Air (°F)	48	Arrived @	9:25
Truck No.	83	Concrete (°F) ASTM C 1064	67	Total Time	45
Cubic Yds.	10	Air Content (%) ASTM C 231	3.4		

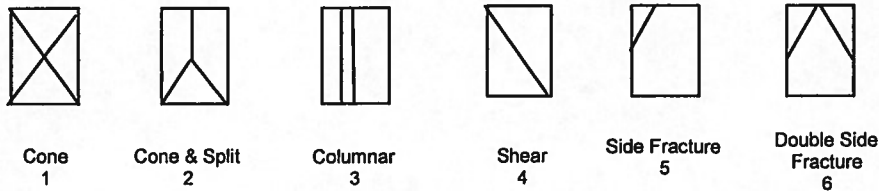
*Concrete sampled by ASTM C 172

Specimen Storage ASTM C 31: Field cure days: 1
 Date received 17-Nov-10
 Condition of Cylinders: Good

Lab No.	Test Date	Avg Dia (in)	Area (in ²)	Age (Days)	Load (lbs)	Compressive Strength (psi)	Break type
67807	23-Nov-10	4.015	12.66	7	62,400	4930	2
67808	14-Dec-10			28			
67809	14-Dec-10			28			
67810	HOLD			HOLD			

*Concrete compressive strength by ASTM C 39

Types of Breaks

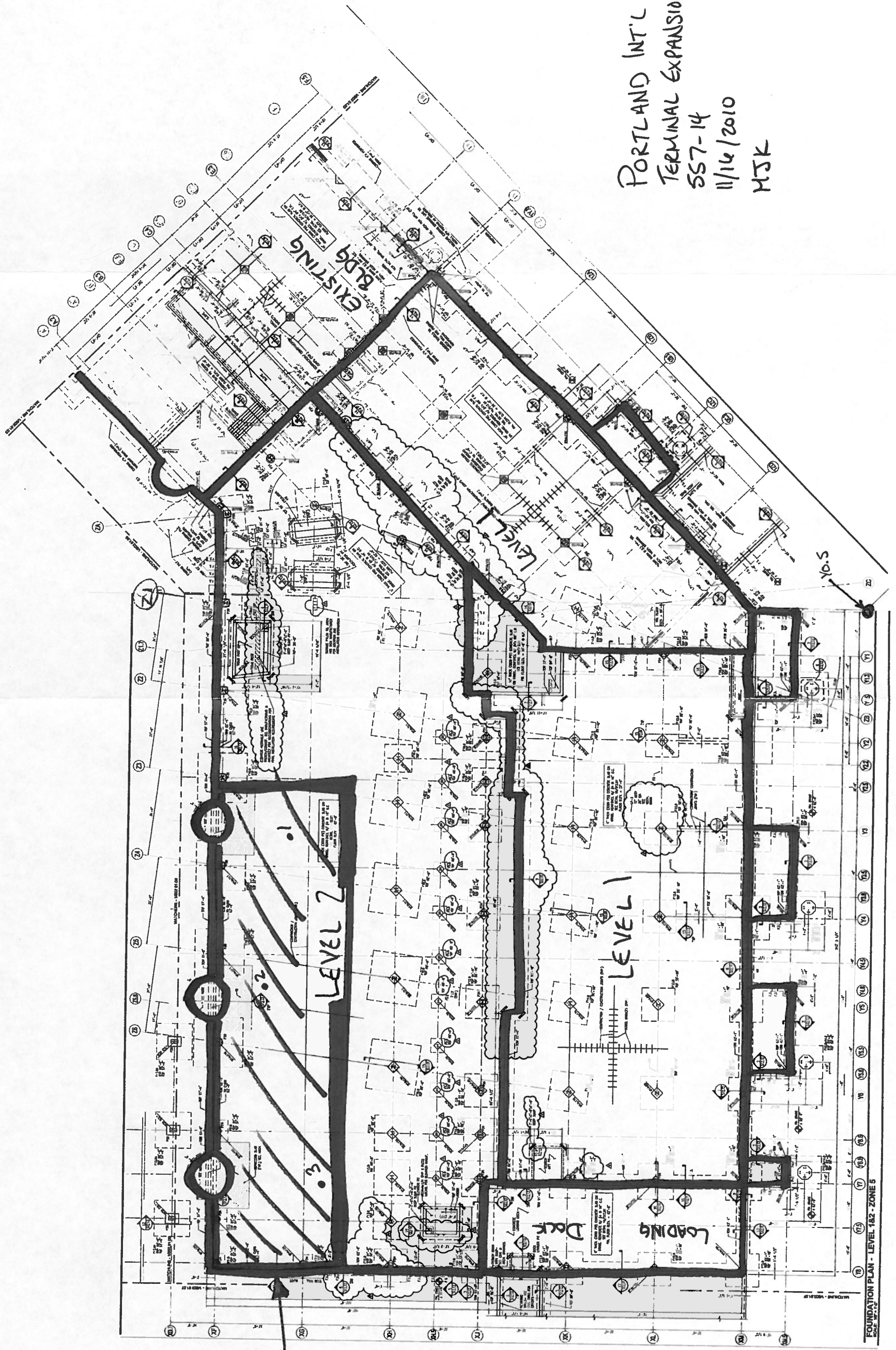


Load	Ticket Number	Truck Number	Cubic Yds	Slump (inches)	Air Temp (°F)	Conc Temp (°F)	(%) Air Content	Time (min.)
12	179390	107	10	--	--	--	--	50
13	179391	96	10	--	--	--	--	50
14	--	--	3	--	--	--	--	--

Remarks: Total Loads: 14

Checked by: *Matthew T. Grady*
 For Matthew T. Grady, Manager of MTS

PORTLAND INT'L AIRPORT
TERMINAL EXPANSION
SS7-14
11/16/2010
MSK



PLACEMENT
LOCATION
130+ yds

R. W. GILLESPIE & ASSOCIATES, INC.

86 Industrial Park Road, Suite 4, Saco, ME 04072 207-286-8008
 200 International Drive, Suite 170, Portsmouth, NH 03801 603-427-0244

CONCRETE TEST/PLACEMENT REPORT

Project Name: Terminal Enhancement, Portland Int. Jetport
Project No: 557-14
Weather Conditions: Overcast
Method of Placement: Pump
Admixtures: Mid Range Water Reducer, 1% Pozzutec 20+
Placement Location: Slab-On-Deck
Test Cylinder Location: See Sketch

Date Cylinders Cast: 16-Nov-10
Concrete Supplier: Auburn
General Contractor: Turner
Design Strength: 3,500
Max Agg. Size: 3/8

Date Report Issued: NOV 23 2010

4x8 Cylinders	4	Cast by	Michael J. Kramlich	Time	
Load No.	1	Slump (in) ASTM C 143	5	Batched @	12:10
Ticket No.	179402	Air (°F)	48	Arrived @	12:35
Truck No.	97	Concrete (°F) ASTM C 1064	75	Total Time	40
Cubic Yds.	10	Air Content (%) ASTM C 231	3.5		

*Concrete sampled by ASTM C 172

Specimen Storage ASTM C 31: Field cure days: 1
 Date received 17-Nov-10
 Condition of Cylinders: Good

Lab No.	Test Date	Avg Dia (in)	Area (in ²)	Age (Days)	Load (lbs)	Compressive Strength (psi)	Break type
67811	23-Nov-10	4.015	12.66	7	50,020	3950	5
67812	14-Dec-10			28			
67813	14-Dec-10			28			
67814	HOLD			HOLD			

*Concrete compressive strength by ASTM C 39

Types of Breaks



Cone
1



Cone & Split
2



Columnar
3



Shear
4



Side Fracture
5

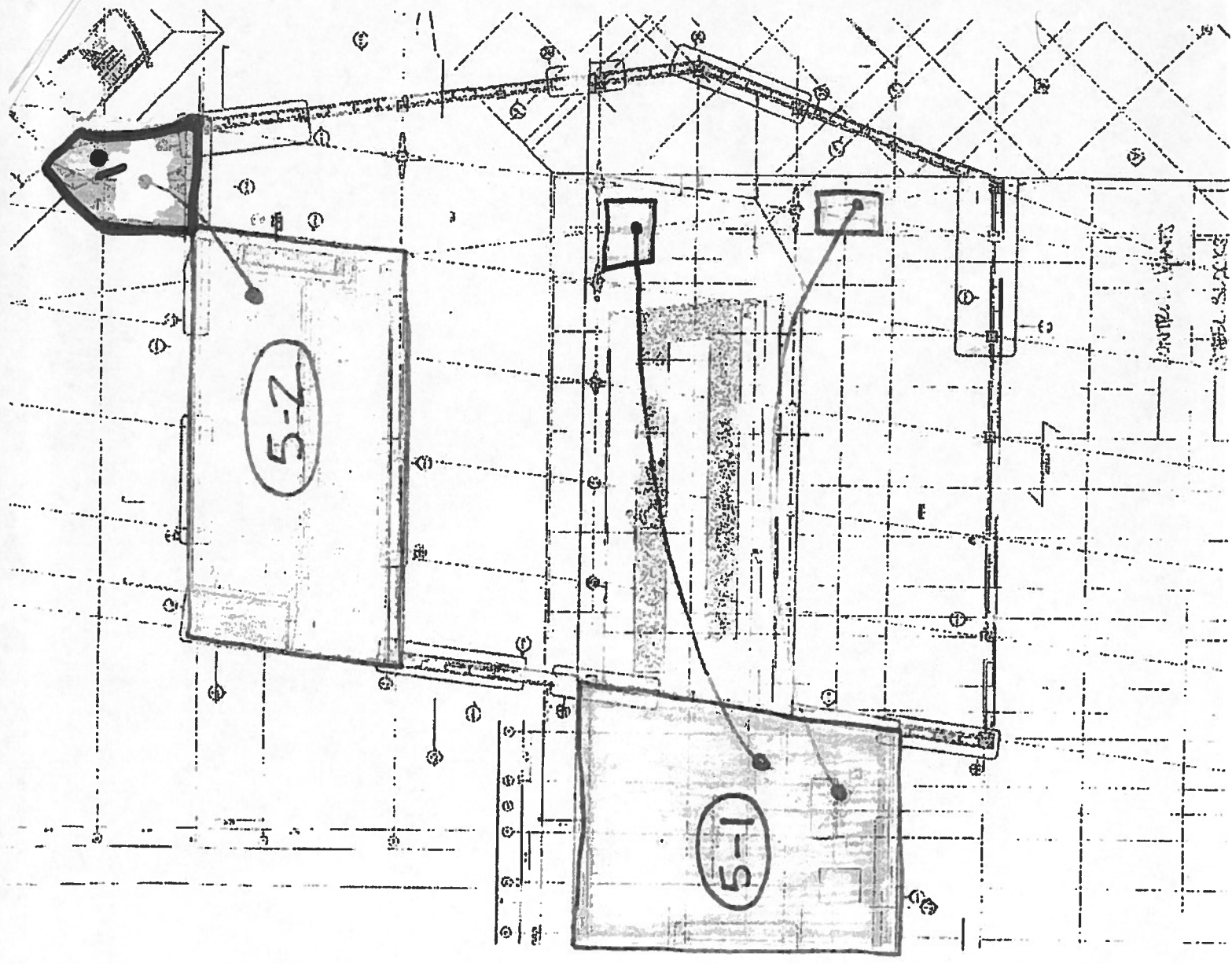


Double Side Fracture
6

Load	Ticket Number	Truck Number	Cubic Yds	Slump (inches)	Air Temp (°F)	Conc Temp (°F)	(%) Air Content	Time (min.)
2	179404	83	10	--	--	--	--	45

Remarks: Light weight
 Unit Weight: 122.8 PCF

Checked by: Matthew T. Grady
 Matthew T. Grady, Manager of MTS



LEVEL 5

PORTLAND INT'L AIRPORT
 TERMINAL EXPANSION 557-14
 11/16/2010
 MJK