

R. W. Gillespie & Associates, Inc.

86 Industrial Park Road, Suite 4, Saco, ME 04072 207-286-8008
200 International Drive, Suite 170, Portsmouth, NH 03801 603-427-0244

LETTER OF TRANSMITTAL

City of Portland, Portland Int. Jetport
1001 Westbrook Street
Portland, Maine 04102

Date:	10 Nov 2010	Project No.:	557-14
Attention:	Mr. Cuyler Feagles (cmf@portlandmaine.gov)		
Re:	Concrete Testing Terminal Enhancement, Portland Int. Jetport Portland, Maine		

We are sending you attached concrete cylinder test results.

Cylinder No. (s)	Age (Days)
67685	7

Remarks:

Copy To:
Roy Williams: rsw@portlandmaine.gov
Jim Stanislaski: jim_stanislaski@gensler.com
Cliff Takara: clifford_takara@gensler.com
Lacey Fogg: Lacey.Fogg@amec.com
Mike Fusco: mfusco@tcco.com
Shaun Winner: swinner@tcco.com
Phil Coleman: pcoleman@tcco.com
Elizabeth O'Toole: eotoole@tcco.com
TMM@portlandmaine.gov
ldobson@portlandmaine.gov
rdixon@tcco.com
gemitchell@tcco.com
Remi Delcourt (remi@auburnconcrete.com)
Jeff Evans, Amec (jeff.evans@amec.com)

Signed: Bertha Dawn

If enclosures are not as noted, kindly notify us at once.

R. W. GILLESPIE & ASSOCIATES, INC.

86 Industrial Park Road, Suite 4, Saco, ME 04072 207-286-8008
 200 International Drive, Suite 170, Portsmouth, NH 03801 603-427-0244

CONCRETE TEST/PLACEMENT REPORT

Project Name: Terminal Enhancement, Portland Int. Jetport
Project No: 557-14
Weather Conditions: Sunny
Method of Placement: Pump
Admixtures: Mid Range Water Reducer, 2% Pozzutec 20+
Placement Location: Parapet Walls and Column Diamonds
Test Cylinder Location: See sketch

Date Cylinders Cast: 02-Nov-10
Concrete Supplier: Auburn
General Contractor: Turner
Design Strength: 3,000
Max Agg. Size: 3/4

Date Report Issued: **NOV 10 2010**

4x8 Cylinders	4	Cast by	Michael J. Kramlich	Time		
Load No.	1	Slump (in) ASTM C 143	6.5		Batched @	2:00
Ticket No.	180177	Air (°F)	46		Arrived @	2:20
Truck No.	99	Concrete (°F) ASTM C 1064	60		Total Time	110
Cubic Yds.	10	Air Content (%) ASTM C 231	4.5			

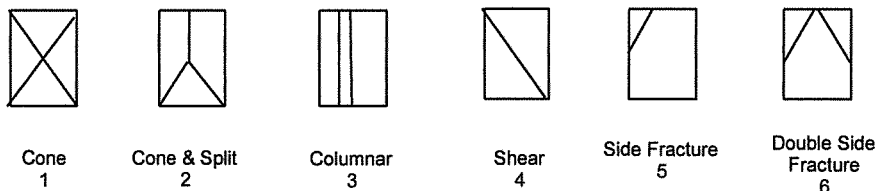
*Concrete sampled by ASTM C 172

Specimen Storage ASTM C 31: Field cure days: 1
 Date received 03-Nov-10
 Condition of Cylinders: Good

Lab No.	Test Date	Avg Dia (in)	Area (in ²)	Age (Days)	Load (lbs)	Compressive Strength (psi)	Break type
67685	09-Nov-10	4.009	12.62	7	52,480	4160	5
67686	30-Nov-10			28			
67687	30-Nov-10			28			
67688	HOLD			HOLD			

*Concrete compressive strength by ASTM C 39

Types of Breaks



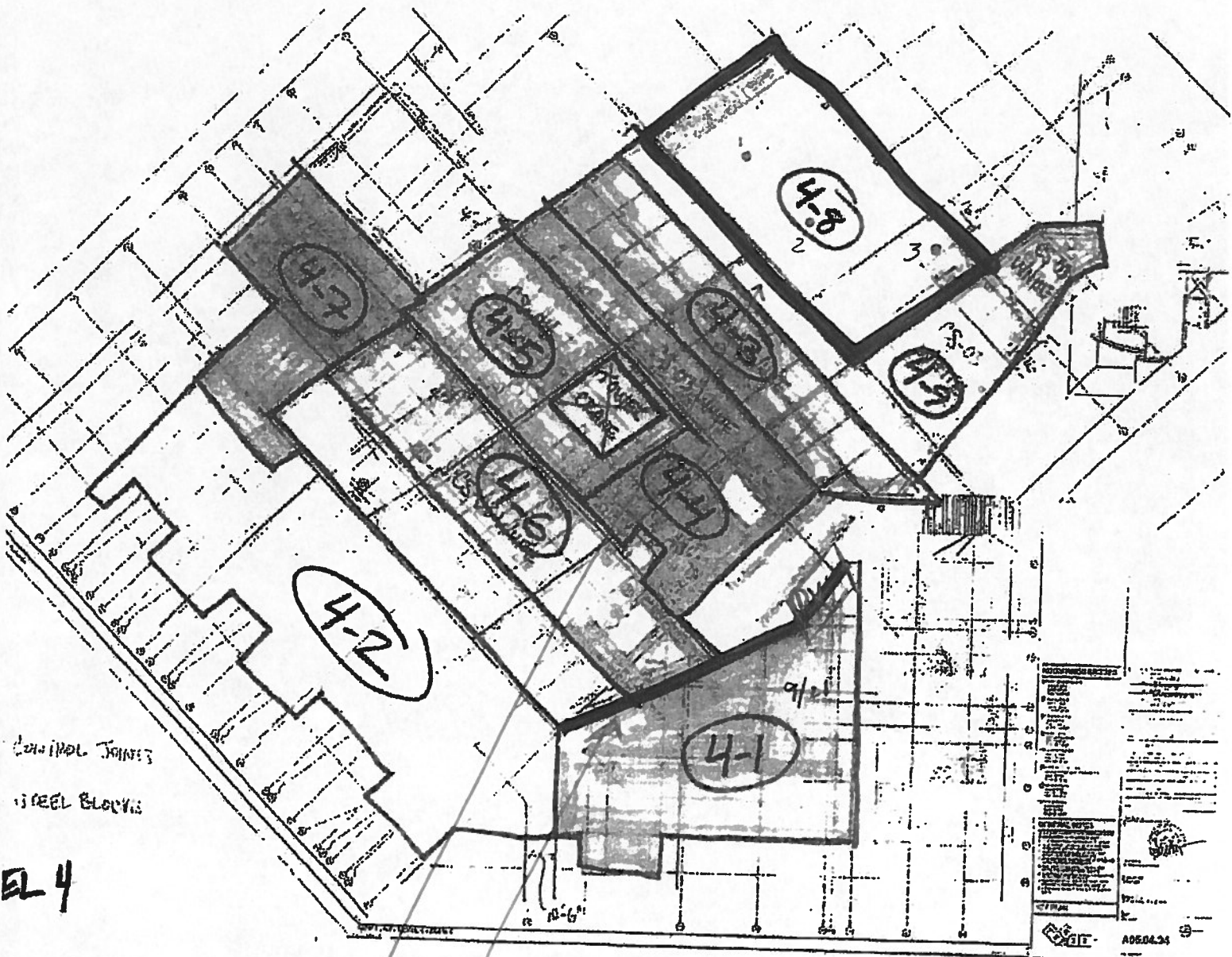
Load	Ticket Number	Truck Number	Cubic Yds	Slump (inches)	Air Temp (°F)	Conc Temp (°F)	(%) Air Content	Time (min.)
2	180180	97	10	--	--	--	--	85
3	180184	85	10	--	--	--	--	75
4	--	--	5	--	--	--	--	--

Remarks: *Notified Turner reps of impending time (90 min.). Was informed that as long as truck was at hopper before 90 minutes, it was okay to place. Also notified Lacey Fogg.

**Hydraulic line broke at 85 minutes. Full load not discharged.

Curing Temps: Max 58°, Min 48°

Checked by: Don Chenevix
 For Matthew T. Grady, Manager of MTS



CONC. JOINTS
STEEL BLOCKS

EL 4

140 yds LIGHTWEIGHT
SLAB 4-8
35 yds NORMAL WEIGHT
PARAPET WALLS

PORTLAND INT'L AIRPORT
TERMINAL EXPANSION
557-14
11/21/2010
MSK

PROJECT NO.	557-14
DATE	11/21/2010
DESIGNER	MSK
CHECKER	
APPROVER	
SCALE	
PROJECT NAME	PORTLAND INT'L AIRPORT TERMINAL EXPANSION
PROJECT LOCATION	
PROJECT OWNER	
PROJECT ARCHITECT	
PROJECT ENGINEER	
PROJECT CONTRACTOR	
PROJECT SUBCONTRACTOR	
PROJECT CONSULTANT	
PROJECT SPECIALIST	
PROJECT MATERIALS	
PROJECT EQUIPMENT	
PROJECT SERVICES	
PROJECT NOTES	
PROJECT REVISIONS	
PROJECT COMMENTS	
PROJECT CONTACT	
PROJECT PHONE	
PROJECT FAX	
PROJECT EMAIL	
PROJECT WEBSITE	
PROJECT ADDRESS	
PROJECT CITY	
PROJECT STATE	
PROJECT ZIP	
PROJECT COUNTRY	
PROJECT LEGAL	
PROJECT TAX	
PROJECT FINANCE	
PROJECT OPERATIONS	
PROJECT MAINTENANCE	
PROJECT REPAIRS	
PROJECT REPLACEMENTS	
PROJECT UPGRADES	
PROJECT MODIFICATIONS	
PROJECT ADDITIONS	
PROJECT DELETIONS	
PROJECT REVISIONS	
PROJECT COMMENTS	
PROJECT CONTACT	
PROJECT PHONE	
PROJECT FAX	
PROJECT EMAIL	
PROJECT WEBSITE	
PROJECT ADDRESS	
PROJECT CITY	
PROJECT STATE	
PROJECT ZIP	
PROJECT COUNTRY	
PROJECT LEGAL	
PROJECT TAX	
PROJECT FINANCE	
PROJECT OPERATIONS	
PROJECT MAINTENANCE	
PROJECT REPAIRS	
PROJECT REPLACEMENTS	
PROJECT UPGRADES	
PROJECT MODIFICATIONS	
PROJECT ADDITIONS	
PROJECT DELETIONS	