

R. W. Gillespie & Associates, Inc.

86 Industrial Park Road, Suite 4, Saco, ME 04072 207-286-8008  
200 International Drive, Suite 170, Portsmouth, NH 03801 603-427-0244

LETTER OF TRANSMITTAL

City of Portland, Portland Int. Jetport

1001 Westbrook Street

Portland, Maine 04102

Date:	October 7, 2010	Project No.:	557-14
Attention:	Mr. Cuyler Feagles (cmf@portlandmaine.gov)		
Re:	Concrete Testing Terminal Enhancement, Portland Int. Jetport Portland, Maine		

We are sending you attached concrete cylinder test results.

Cylinder No. (s)	Age (Days)
67278	7
67282	7
67286	7
67290	7
67294	7
67298	7

Remarks:

Copy To:  
 Roy Williams: rsw@portlandmaine.gov  
 Jim Stanislaski: jim\_stanislaski@gensler.com  
 Cliff Takara: clifford\_takara@gensler.com  
 Lacey Fogg: Lacey.Fogg@amec.com  
 Mike Fusco: mfusco@tcco.com  
 Shaun Winner: swinner@tcco.com  
 Phil Coleman: pcoleman@tcco.com  
 Elizabeth O'Toole: eotoole@tcco.com  
 TMM@portlandmaine.gov  
 ldobson@portlandmaine.gov  
 rdixon@tcco.com  
 gemitchell@tcco.com  
 Remi Delcourt (remi@auburnconcrete.com)

Signed: Bertha Dawn

If enclosures are not as noted, kindly notify us at once.

# R. W. GILLESPIE & ASSOCIATES, INC.

86 Industrial Park Road, Suite 4, Saco, ME 04072 207-286-8008  
 200 International Drive, Suite 170, Portsmouth, NH 03801 603-427-0244  
**CONCRETE TEST/PLACEMENT REPORT**

**Project Name:** Terminal Enhancement, Portland Int. Jetport  
**Project No:** 557-14  
**Weather Conditions:** Sunny  
**Method of Placement:** Pump  
**Admixtures:** Mid Range Water Reducer  
**Placement Location:** Roof Deck (Slab on deck) 4-2  
**Test Cylinder Location:** See attached sketch

**Date Cylinders Cast:** 29-Sep-10  
**Concrete Supplier:** Auburn  
**General Contractor:** Turner  
**Design Strength:** 3,500  
**Max Agg. Size:** 3/8

**Date Report Issued:** OCT 07 2010

4x8 Cylinders	4	Cast by	Michael J. Kramlich	Time	
Load No.	3	Slump (in) ASTM C 143	8.25	Batched @	7:18
Ticket No.	180917	Air (°F)	70	Arrived @	7:40
Truck No.	82	Concrete (°F) ASTM C 1064	74	Total Time	45±
Cubic Yds.	10	Air Content (%) ASTM C 231	3.5		

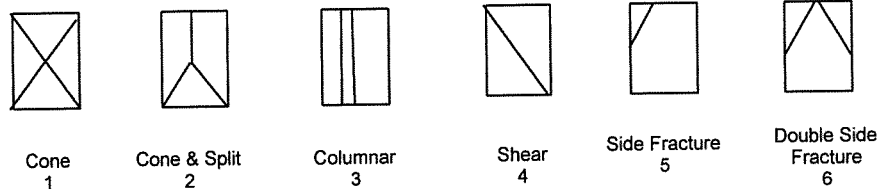
\*Concrete sampled by ASTM C 172

Specimen Storage ASTM C 31: Field cure days: 1  
 Date received 30-Sep-10  
 Condition of Cylinders: Good

Lab No.	Test Date	Avg Dia (in)	Area (in <sup>2</sup> )	Age (Days)	Load (lbs)	Compressive Strength (psi)	Break type
67278	06-Oct-10	4.024	12.72	7	41,820	3290	2
67279	27-Oct-10			28			
67280	27-Oct-10			28			
67281	HOLD			HOLD			

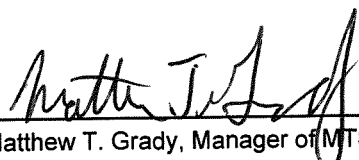
\*Concrete compressive strength by ASTM C 39

### Types of Breaks



Load	Ticket Number	Truck Number	Cubic Yds	Slump (inches)	Air Temp (°F)	Conc Temp (°F)	(%) Air Content	Time (min.)
1	180914	99	10	--	--	--	--	--
2	180916	76	10	--	--	--	--	--
4	180918	97	10	--	--	--	--	--
5	180919	99	10	--	--	--	--	--

Remarks: 23 Total Loads, Unit Weight = 123.0 pcf

Checked by:   
 Matthew T. Grady, Manager of MTS

# R. W. GILLESPIE & ASSOCIATES, INC.

86 Industrial Park Road, Suite 4, Saco, ME 04072 207-286-8008  
200 International Drive, Suite 170, Portsmouth, NH 03801 603-427-0244

## CONCRETE TEST/PLACEMENT REPORT

<b>Project Name:</b>	Terminal Enhancement, Portland Int. Jetport	<b>Date Cylinders Cast:</b>	29-Sep-10
<b>Project No:</b>	557-14	<b>Concrete Supplier:</b>	Auburn
<b>Weather Conditions:</b>	Sunny	<b>General Contractor:</b>	Turner
<b>Method of Placement:</b>	Pump	<b>Design Strength:</b>	3,500
<b>Admixtures:</b>	Mid Range Water Reducer	<b>Max Agg. Size:</b>	3/8
<b>Placement Location:</b>	Roof Deck (Slab on deck) 4-2		
<b>Test Cylinder Location:</b>	See attached sketch		

**Date Report Issued:**      **OCT 07 2010**

4x8 Cylinders	4	Cast by	Michael J. Kramlich	Time
Load No.	6	Slump (in) ASTM C 143	7.25	Batched @
Ticket No.	180921	Air (°F)	70	Arrived @
Truck No.	115	Concrete (°F) ASTM C 1064	72	Total Time
Cubic Yds.	10	Air Content (%) ASTM C 231	2.5	40±

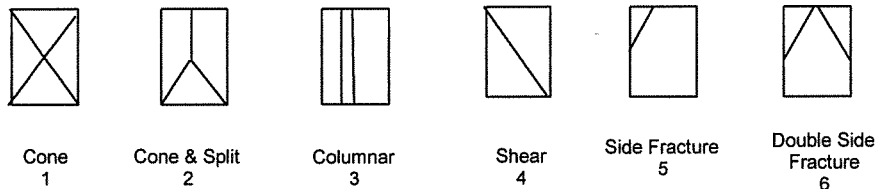
\*Concrete sampled by ASTM C 172

Specimen Storage ASTM C 31: Field cure days: 1  
Date received 30-Sep-10  
Condition of Cylinders: Good

Lab No.	Test Date	Avg Dia (in)	Area (in <sup>2</sup> )	Age (Days)	Load (lbs)	Compressive Strength (psi)	Break type
67282	06-Oct-10	4.024	12.72	7	41,160	3240	5
67283	27-Oct-10			28			
67284	27-Oct-10			28			
67285	HOLD			HOLD			

\*Concrete compressive strength by ASTM C 39

### Types of Breaks



Load	Ticket Number	Truck Number	Cubic Yds	Slump (inches)	Air Temp (°F)	Conc Temp (°F)	(%) Air Content	Time (min.)
7	180922	76	10	--	--	--	--	--
8	180923	82	10	--	--	--	--	--
9	180924	97	10	--	--	--	--	--
10	180926	94	10	--	--	--	--	--

Remarks: 23 Total Loads, Unit Weight = 122.0 pcf

Checked by: Matthew T. Grady  
Matthew T. Grady, Manager of MTS

# R. W. GILLESPIE & ASSOCIATES, INC.

86 Industrial Park Road, Suite 4, Saco, ME 04072 207-286-8008  
 200 International Drive, Suite 170, Portsmouth, NH 03801 603-427-0244

## CONCRETE TEST/PLACEMENT REPORT

**Project Name:** Terminal Enhancement, Portland Int. Jetport  
**Project No:** 557-14  
**Weather Conditions:** Sunny  
**Method of Placement:** Pump  
**Admixtures:** Mid Range Water Reducer  
**Placement Location:** Roof Deck (Slab on deck) 4-2  
**Test Cylinder Location:** See attached sketch

**Date Cylinders Cast:** 29-Sep-10  
**Concrete Supplier:** Auburn  
**General Contractor:** Turner  
**Design Strength:** 3,500  
**Max Agg. Size:** 3/8

**Date Report Issued:** **OCT 07 2010**

4x8 Cylinders	4	Cast by	Michael J. Kramlich		Time
Load No.	11	Slump (in) ASTM C 143	7		Batched @ 9:09
Ticket No.	180927	Air (°F)	70		Arrived @ 9:30
Truck No.	106	Concrete (°F) ASTM C 1064	70		Total Time 45±
Cubic Yds.	10	Air Content (%) ASTM C 231	2.75		

\*Concrete sampled by ASTM C 172

**Specimen Storage ASTM C 31: Field cure days: 1**  
**Date received 30-Sep-10**  
**Condition of Cylinders: Good**

Lab No.	Test Date	Avg Dia (in)	Area (in <sup>2</sup> )	Age (Days)	Load (lbs)	Compressive Strength (psi)	Break type
67286	06-Oct-10	4.024	12.72	7	46,820	3680	5
67287	27-Oct-10			28			
67288	27-Oct-10			28			
67289	HOLD			HOLD			

\*Concrete compressive strength by ASTM C 39

### Types of Breaks



Cone  
1



Cone & Split  
2



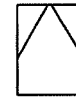
Columnar  
3



Shear  
4



Side Fracture  
5



Double Side Fracture  
6

Load	Ticket Number	Truck Number	Cubic Yds	Slump (inches)	Air Temp (°F)	Conc Temp (°F)	(%) Air Content	Time (min.)
12	180928	78	10	--	--	--	--	--
13	180929	76	10	--	--	--	--	--
14	180930	82	10	--	--	--	--	--
15	180931	97	10	--	--	--	--	--

Remarks: 23 Total Loads, Unit Weight = 122.0 pcf

Checked by:   
 Matthew T. Grady, Manager of MTS

# R. W. GILLESPIE & ASSOCIATES, INC.

86 Industrial Park Road, Suite 4, Saco, ME 04072 207-286-8008  
200 International Drive, Suite 170, Portsmouth, NH 03801 603-427-0244

## CONCRETE TEST/PLACEMENT REPORT

**Project Name:** Terminal Enhancement, Portland Int. Jetport  
**Project No:** 557-14  
**Weather Conditions:** Sunny  
**Method of Placement:** Pump  
**Admixtures:** Mid Range Water Reducer  
**Placement Location:** Roof Deck (Slab on deck) 4-2  
**Test Cylinder Location:** See attached sketch

**Date Cylinders Cast:** 29-Sep-10  
**Concrete Supplier:** Auburn  
**General Contractor:** Turner  
**Design Strength:** 3,500  
**Max Agg. Size:** 3/8

**Date Report Issued:** OCT 07 2010

4x8 Cylinders	4	Cast by	Michael J. Kramlich	Time	
Load No.	16	Slump (in) ASTM C 143	7.5	Batched @	10:00
Ticket No.	180932	Air (°F)	72	Arrived @	10:25
Truck No.	94	Concrete (°F) ASTM C 1064	74	Total Time	35±
Cubic Yds.	10	Air Content (%) ASTM C 231	2.5		

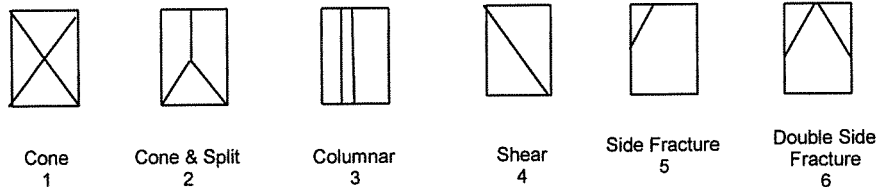
\*Concrete sampled by ASTM C 172

Specimen Storage ASTM C 31: Field cure days: 1  
 Date received 30-Sep-10  
 Condition of Cylinders: Good

Lab No.	Test Date	Avg Dia (in)	Area (in <sup>2</sup> )	Age (Days)	Load (lbs)	Compressive Strength (psi)	Break type
67290	06-Oct-10	4.024	12.72	7	42,720	3360	2
67291	27-Oct-10			28			
67292	27-Oct-10			28			
67293	HOLD			HOLD			

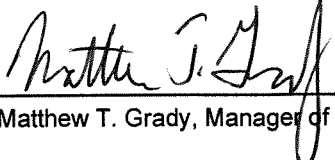
\*Concrete compressive strength by ASTM C 39

### Types of Breaks



Load	Ticket Number	Truck Number	Cubic Yds	Slump (inches)	Air Temp (°F)	Conc Temp (°F)	(%) Air Content	Time (min.)
17	180933	78	10	--	--	--	--	--
18	180934	76	10	--	--	--	--	--
19	180936	82	10	--	--	--	--	--
20	180939	97	10	--	--	--	--	--
21	--	--	10	--	--	--	--	--
22	180942	98	10	--	--	--	--	--

Remarks: 23 Total Loads, Unit Weight = 122.4 pcf

Checked by:   
 Matthew T. Grady, Manager of MTS

# R. W. GILLESPIE & ASSOCIATES, INC.

86 Industrial Park Road, Suite 4, Saco, ME 04072 207-286-8008  
 200 International Drive, Suite 170, Portsmouth, NH 03801 603-427-0244  
**CONCRETE TEST/PLACEMENT REPORT**

**Project Name:** Terminal Enhancement, Portland Int. Jetport  
**Project No:** 557-14  
**Weather Conditions:** Sunny  
**Method of Placement:** Pump  
**Admixtures:** Mid Range Water Reducer  
**Placement Location:** Roof Deck (Slab on deck) 4-2  
**Test Cylinder Location:** See attached sketch

**Date Cylinders Cast:** 29-Sep-10  
**Concrete Supplier:** Auburn  
**General Contractor:** Turner  
**Design Strength:** 3,500  
**Max Agg. Size:** 3/8

**Date Report Issued:** **OCT 07 2010**

4x8 Cylinders	4	Cast by	Michael J. Kramlich	Time	
Load No.	23	Slump (in) ASTM C 143	7.75	Batched @	--
Ticket No.	180942	Air (°F)	74	Arrived @	12:20
Truck No.	115	Concrete (°F) ASTM C 1064	72	Total Time	40±
Cubic Yds.	7	Air Content (%) ASTM C 231	3.0		

\*Concrete sampled by ASTM C 172

Specimen Storage ASTM C 31: Field cure days: 1  
 Date received 30-Sep-10  
 Condition of Cylinders: Good

Lab No.	Test Date	Avg Dia (in)	Area (in <sup>2</sup> )	Age (Days)	Load (lbs)	Compressive Strength (psi)	Break type
67294	06-Oct-10	4.024	12.72	7	41,500	3260	2
67295	27-Oct-10			28			
67296	27-Oct-10			28			
67297	HOLD			HOLD			

\*Concrete compressive strength by ASTM C 39

### Types of Breaks



Cone  
1



Cone & Split  
2



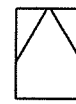
Columnar  
3



Shear  
4



Side Fracture  
5

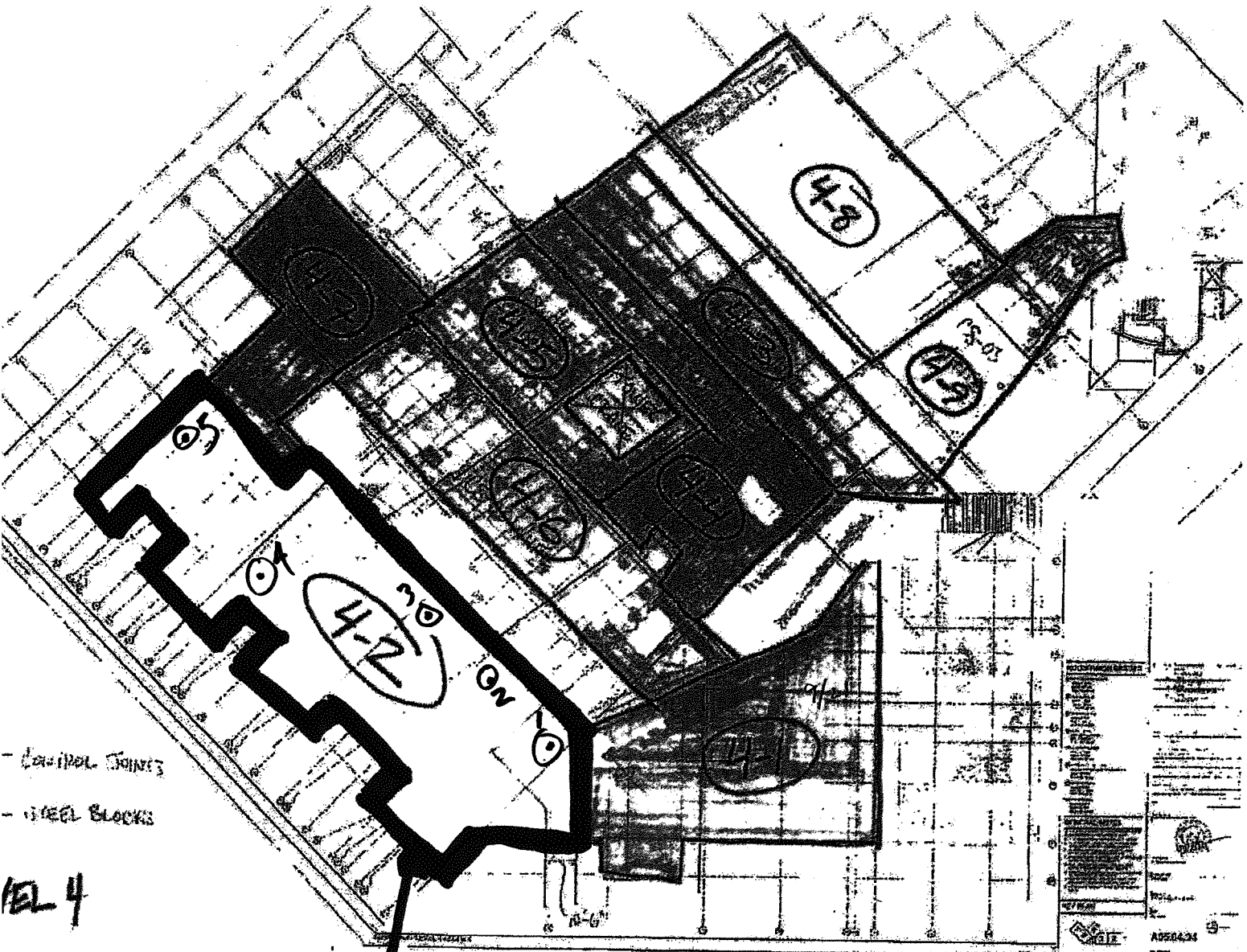


Double Side  
Fracture  
6

Load	Ticket Number	Truck Number	Cubic Yds	Slump (inches)	Air Temp (°F)	Conc Temp (°F)	(%) Air Content	Time (min.)

Remarks: 23 Total Loads, Unit Weight = 122.4 pcf

Checked by: Matthew T. Grady  
 Matthew T. Grady, Manager of MTS



- CONTROL JOINTS  
 - STEEL BLOCKS

REL 4

SLAB ON DECK  
 227 yds. LIGHTWEIGHT, GRAY

⊙<sup>s</sup> SAMPLE LOCATION

PORTLAND INT'L AIRPORT  
 TERMINAL EXPANSION  
 557-14  
 MSK  
 9-29-10

# R. W. GILLESPIE & ASSOCIATES, INC.

86 Industrial Park Road, Suite 4, Saco, ME 04072 207-286-8008  
 200 International Drive, Suite 170, Portsmouth, NH 03801 603-427-0244  
**CONCRETE TEST/PLACEMENT REPORT**

<b>Project Name:</b>	Terminal Enhancement, Portland Int. Jetport	<b>Date Cylinders Cast:</b>	29-Sep-10
<b>Project No:</b>	557-14	<b>Concrete Supplier:</b>	Auburn
<b>Weather Conditions:</b>	Sunny	<b>General Contractor:</b>	Turner
<b>Method of Placement:</b>	Rear discharge	<b>Design Strength:</b>	4,000
<b>Admixtures:</b>	Mid Range Water Reducer	<b>Max Agg. Size:</b>	3/4
<b>Placement Location:</b>	XM - XM.5 / YO.5 - Y1.5, Y3 - Y4, Y4.8 - Y5.8, Y6.8 - Y7		
<b>Test Cylinder Location:</b>	XM - XM.5 / YO.5 - Y1.5 AND Y3.5 - Y4		

**Date Report Issued:** OCT 07 2010

4x8 Cylinders	4	Cast by	Michael J. Kramlich	Time	
Load No.	2	Slump (in) ASTM C 143	5	Batched @	1:21
Ticket No.	177305	Air (°F)	76	Arrived @	1:45
Truck No.	76	Concrete (°F) ASTM C 1064	72	Total Time	50±
Cubic Yds.	10	Air Content (%) ASTM C 231	2.9		

\*Concrete sampled by ASTM C 172

Specimen Storage ASTM C 31: Field cure days: 1  
 Date received 30-Sep-10  
 Condition of Cylinders: Good

Lab No.	Test Date	Avg Dia (in)	Area (in <sup>2</sup> )	Age (Days)	Load (lbs)	Compressive Strength (psi)	Break type
67298	06-Oct-10	4.024	12.72	7	41,200	3240	2
67299	27-Oct-10			28			
67300	27-Oct-10			28			
67301	HOLD			HOLD			

\*Concrete compressive strength by ASTM C 39

**Types of Breaks**



Cone  
1



Cone & Split  
2



Columnar  
3



Shear  
4



Side Fracture  
5



Double Side Fracture  
6

Load	Ticket Number	Truck Number	Cubic Yds	Slump (inches)	Air Temp (°F)	Conc Temp (°F)	(%) Air Content	Time (min.)
1	--	--	10	--	--	--	--	--
3	177308	94	10	--	--	--	--	--
4	177311	82	10	--	--	--	--	70±

Remarks:

Checked by:   
 Matthew T. Grady, Manager of MTS