

SHEET NOTES

Portland International Jetport
1001 Westbrook Street
Portland, Maine 04102

Gensler

oest ASSOCIATES, INC.
engineers • architects • surveyors • construction managers

2020 K Street, NW
Suite 200
Washington, DC 20006
Telephone 202.721.5200
Facsimile 202.872.8587

Drainage Structure Schedule

DESC.	RM	INV. IN	INV. IN	INV. IN	INV. OUT
A-69	57.31	49.74(24)	54.26(4)	49.74(16)	49.74(24)
A-70	58.53	51.08(18)	52.63(4)	51.48(15)	50.68(18)
A-71	57.60	-	-	-	51.60(15)
A-72-A	58.19	51.11(15)	51.06(4)	-	51.16(15)
A-73	58.16	51.16	-	-	51.29
A-74	58.13	53.73	-	-	51.48
A-76	59.48	50.88	-	-	50.78
A-107A	57.94	53.94	53.24	-	53.14
A-107	58.57	53.35	53.35	-	53.55
A-108	61.83	56.15	54.30	-	54.30
A-109	61.82	54.50	54.64	-	54.37
A-110	63.57	56.97	-	-	56.67
A-111	63.50	-	-	-	57.99
A-112A	63.79	56.79	-	-	56.99
A-112	64.18	57.60	57.60	57.60	57.50
A-113	65.29	-	-	-	57.68
A-114	64.13	57.97	-	-	57.82
A-115	63.58	58.31	-	-	58.01
A-116	62.89	58.55	59.10(UD)	-	58.30
A-117	65.22	-	-	-	-
A-118	66.33	-	-	-	59.17
A-119	65.67	60.76	-	-	61.71
A-120	66.20	62.28	62.49	-	62.28
A-121	67.15	-	-	-	63.45
A-122	68.50	62.82	62.89	-	62.89
A-123	59.23	55.07	-	-	53.93
A-124	60.97	55.21	55.56	57.96(UD)	55.61
A-125	61.09	55.61	55.61	56.26(UD)	55.87
A-126	60.92	55.02	-	-	55.12
A-133	61.21	55.21	-	-	55.21
A-134	61.31	-	-	-	56.00
B-64A	70.71	67.03	66.53	67.63(2)	66.63
B-64	70.35	66.22	66.22	67.00(UD)	65.85
B-63	70.38	64.03	-	-	63.93
B-65	70.24	66.82	67.00(UD)	-	66.78
B-66	70.14	67.34(UD)	-	-	66.99
P-4	63.1	56.4(UD)	55.0	-	42.5
P-3	63.2	55.6	-	-	55.5
P-2	63.0	-	-	-	56.0
P-1	65.4	-	-	-	58.0
PC-5	63.08	57.43	-	-	57.38
W-CB-11	77.06	73.01(UD)	-	-	71.61
W-CB-12	77.01	71.05	73.75(UD)	-	71.01
W-CB-13	72.50	68.36	68.06(UD)	-	67.96
W-CB-14	72.49	68.56	68.56(UD)	-	68.56
W-WOU-4	73.56	-	-	-	68.43
W-DMH-3	81.40	-	-	-	-
W-CB-18	71.88	68.53	-	-	68.43

Sanitary Structure Schedule

DESC.	RM	INV. IN	INV. IN	INV. IN	INV. OUT
SMH 23	76.33	65.66	-	-	65.63
SMH 24	?	?	FM ?	-	?
SMH 25	70.61	?	62.43 ?	-	?
SMH 26	70.25	61.75	-	-	61.80
SMH 27	65.00	?	-	-	55.02

GENERAL NOTES

- EXISTING CONDITIONS ARE BASED ON A TOPOGRAPHIC SURVEY BY GOOD BEES, INC., DATED JULY 2008. DATUM BASED ON USGS DISK J121, ELEVATION 63.58 (NGVD 1929) AND LOCATED ON THE EAST FACE OF OLD ADMINISTRATION BUILDING, WHICH NOW HOUSES THE CIVIL AIR PATROL AND MAINE AVIATION CORPS. ADDITIONAL INFORMATION FROM A TOPOGRAPHIC SURVEY COMPLETED BY DUFRESNE-HENRY / STANTEC, DATED SPRING 2000, WINTER 2006, SUMMER 2007. EXISTING PHASE 1 PARKING GARAGE RECORD DRAWING DATA & PHASE 2 PARKING GARAGE DESIGN DRAWINGS.
- ELEVATIONS ARE BASED UPON NOS BENCH MARK DISK, STAMPED J121 1956, SET VERTICALLY IN THE EAST FACE OF THE CONCRETE FOUNDATION OF THE MAINE AVIATION BUILDING, 0.7 FEET SOUTH OF THE NORTHEAST CORNER OF THE ORIGINAL BUILDING AND 1.5 FEET ABOVE GROUND. PUBLISHED ELEVATION IS 63.58 FEET NGVD 1929.
- THE EXISTING FLAGPOLES AND SIGN LOCATED WEST OF THE EXISTING TERMINAL BUILDING SHALL BE REMOVED AND RELOCATED AS DIRECTED BY THE OWNER.
- WITHIN THE CONSTRUCTION LIMIT LINES (CLL), THERE ARE VARIOUS EXISTING SITE ELEMENTS INCLUDING UTILITIES, WHICH MAY REQUIRE REMOVAL, REPLACEMENT OR RELOCATION AS A RESULT OF THE PROPOSED WORK OF THIS CONTRACT. IT IS INCUMBENT UPON THE CONTRACTOR TO REVIEW ALL CONTRACT DOCUMENTS INCLUDING REVIEW OF REFERENCE PLANS OF EXISTING FACILITIES AND FUTURE PHASES OF RELATED ADJACENT PROJECTS AVAILABLE FROM THE OWNER TO CLEARLY UNDERSTAND AND DETERMINE THE INTENDED SCOPE OF WORK.
- ALL PAVEMENT WITHIN THE CONSTRUCTION LIMITS MAY BE REMOVED AND TAKEN OFFSITE TO BE PROCESSED BY SITE CONTRACTOR AND RE-USED AS RECLAIM GRAVEL IN THE BASE MATERIALS FOR PARKING AREAS AS APPROVED BY ENGINEER.
- ITEMS OUTSIDE CONSTRUCTION LIMIT LINE WILL BE REMOVED BY OTHERS UNDER A SEPARATE CONTRACT.
- THE REMOVAL OF ANY UTILITY SHALL NOT BEGIN PRIOR TO THE COORDINATION WITH EACH RESPECTIVE UTILITY AUTHORITY.
- ALL EXISTING SITE SIGNAGE WITHIN THE CONSTRUCTION LIMITS SHALL BE REMOVED AND INVENTORIED BY CONTRACTOR AND REINSTALLED OR REPLACED AS SPECIFIED ON THE PLANS OR AS DIRECTED BY THE OWNER OR OWNER'S REPRESENTATIVE.
- ALL EXISTING GRANITE CURBING REMOVED WITHIN THE CONSTRUCTION LIMITS SHALL REMAIN THE PROPERTY OF THE CITY OF PORTLAND AND SHALL BE REUSED AS DIRECTED BY THE OWNER OR THE OWNER'S REPRESENTATIVE.
- IT SHALL BE THE RESPONSIBILITY OF THE CONTRACTOR TO REMOVE AND LEGALLY DISPOSE OF ALL DEMOLITION MATERIALS, INCLUDING BUT NOT LIMITED TO, SITE LIGHTS AND BASES, PILING, PRECAST CONCRETE STRUCTURES, EXCAVATION, TREES AND BRUSH, GRUBBINGS, ETC., IN CONFORMANCE WITH ALL LOCAL, STATE AND FEDERAL REQUIREMENTS.
- THE CONTRACTOR SHALL NOT BEGIN DEMOLITION PRIOR TO IMPLEMENTATION OF ALL TEMPORARY EROSION AND SEDIMENT CONTROL BMP'S AS SPECIFIED ON DRAWING C12.05 OF THE CONSTRUCTION DRAWINGS.

Issue	Date & Issue Description	By	Check
1	07/11/08	W/W	AML
2	09/22/08	W/W	AML
3	12/03/08	W/W	AML
4	01/23/09	W/W	AML
5	10/26/09	W/W	FEM

Signature

Project Name
PJM Terminal Enhancement

Project Number
08-0395-000
CAD File Name
T:\5330101\SHEETS\C01.01.DWG

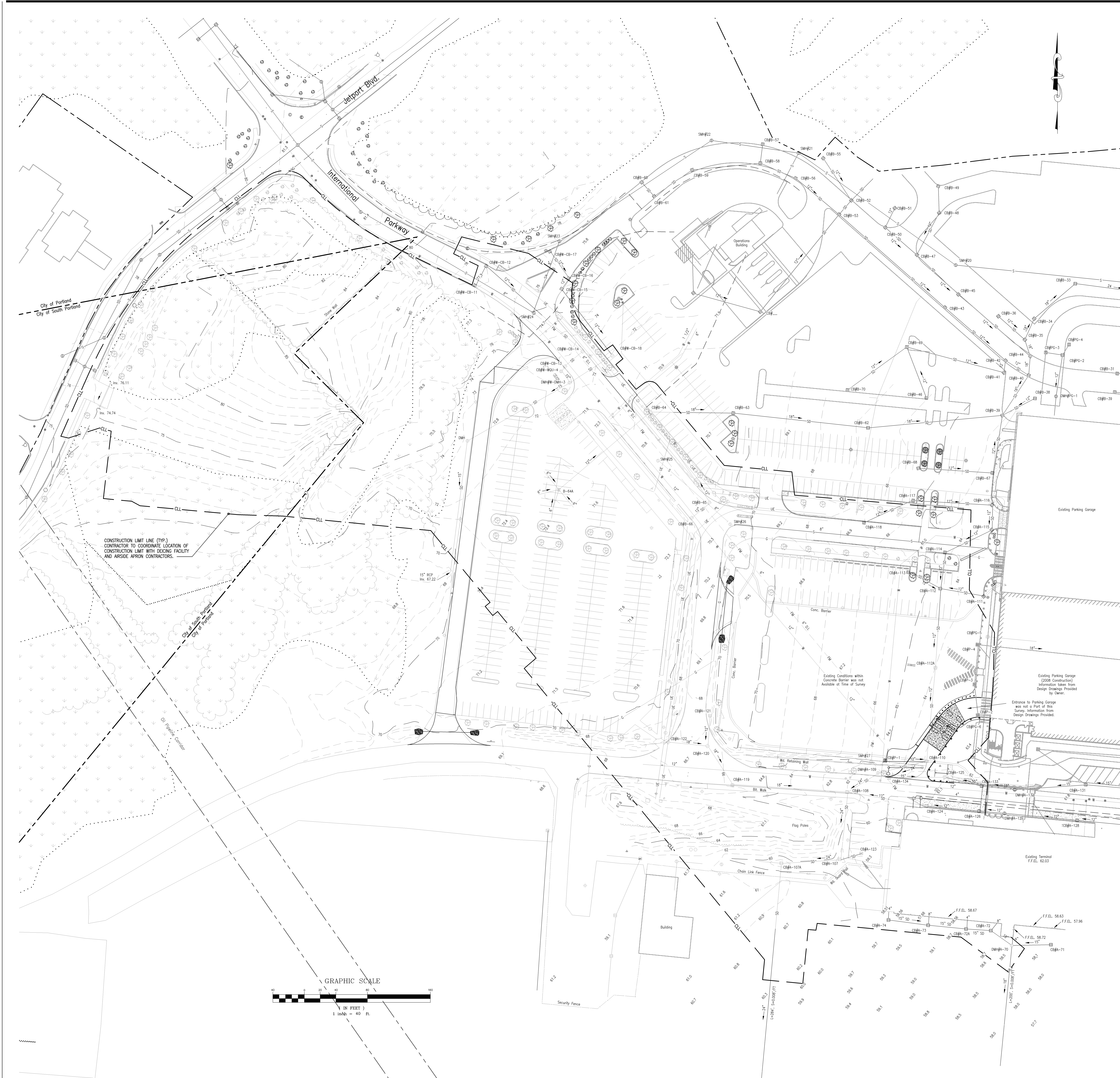
Description
EXISTING CONDITIONS PLAN

Scale
1" = 40'

⊕ Ref. North

C01.01

©2009 Gensler



CONSTRUCTION LIMIT LINE (CLL)
CONTRACTOR TO COORDINATE LOCATION OF
CONSTRUCTION LIMIT WITH GEORG FACILITY
AND ASSIDE APRON CONTRACTORS.

