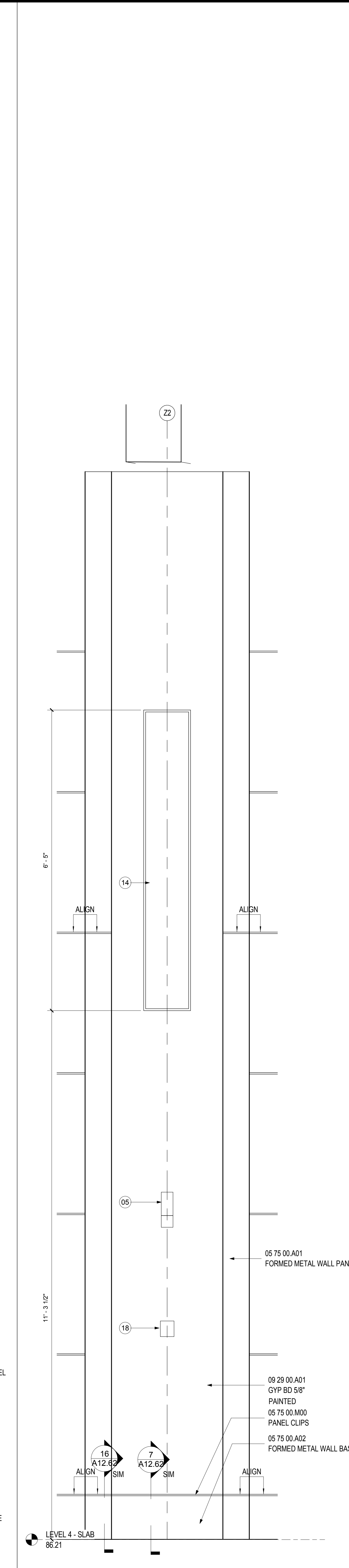
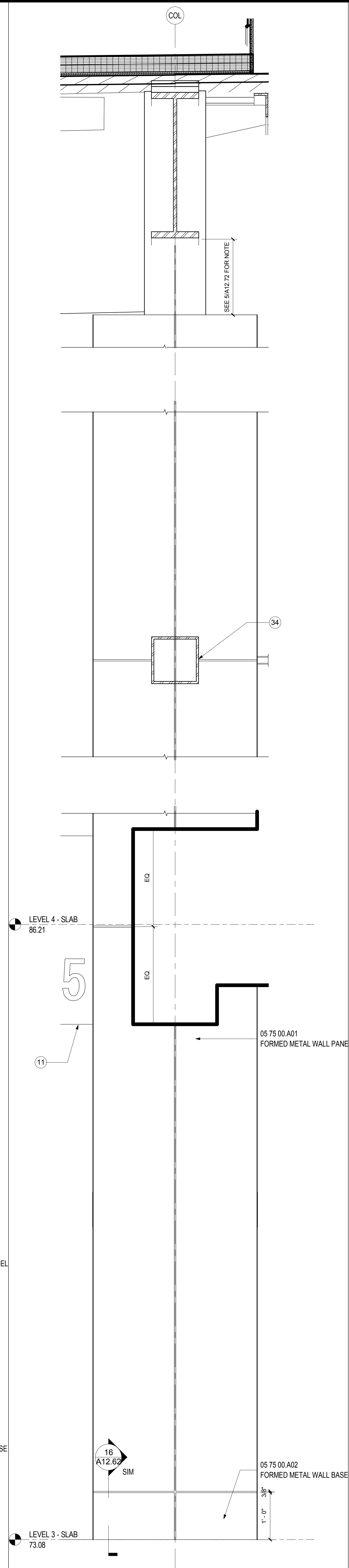


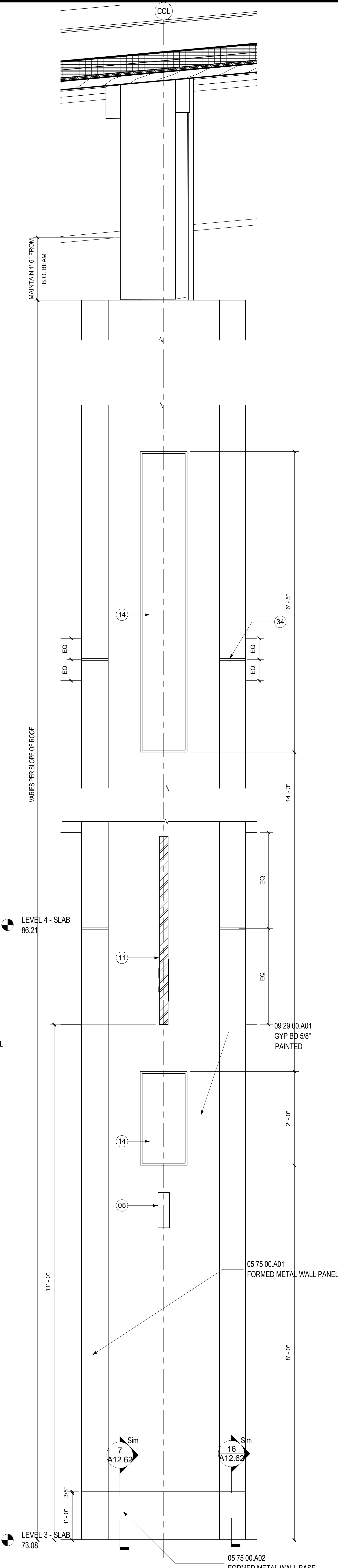
ELEV METAL ENCLOSURE
SCALE: 1" = 1'-0" A12.70



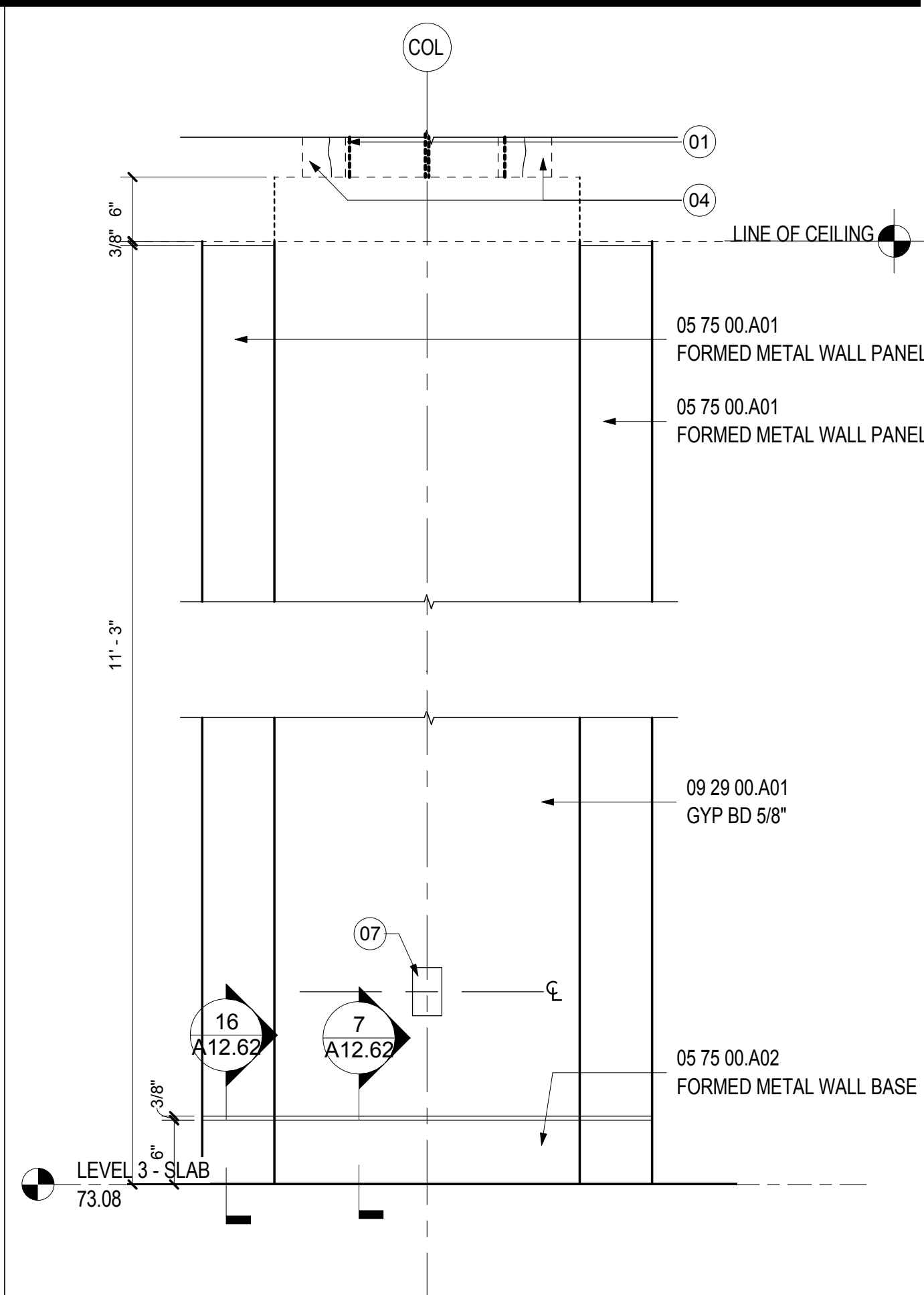
COL @ SECURITY QUEUE N. WALL
SCALE: 1" = 1'-0" A12.70



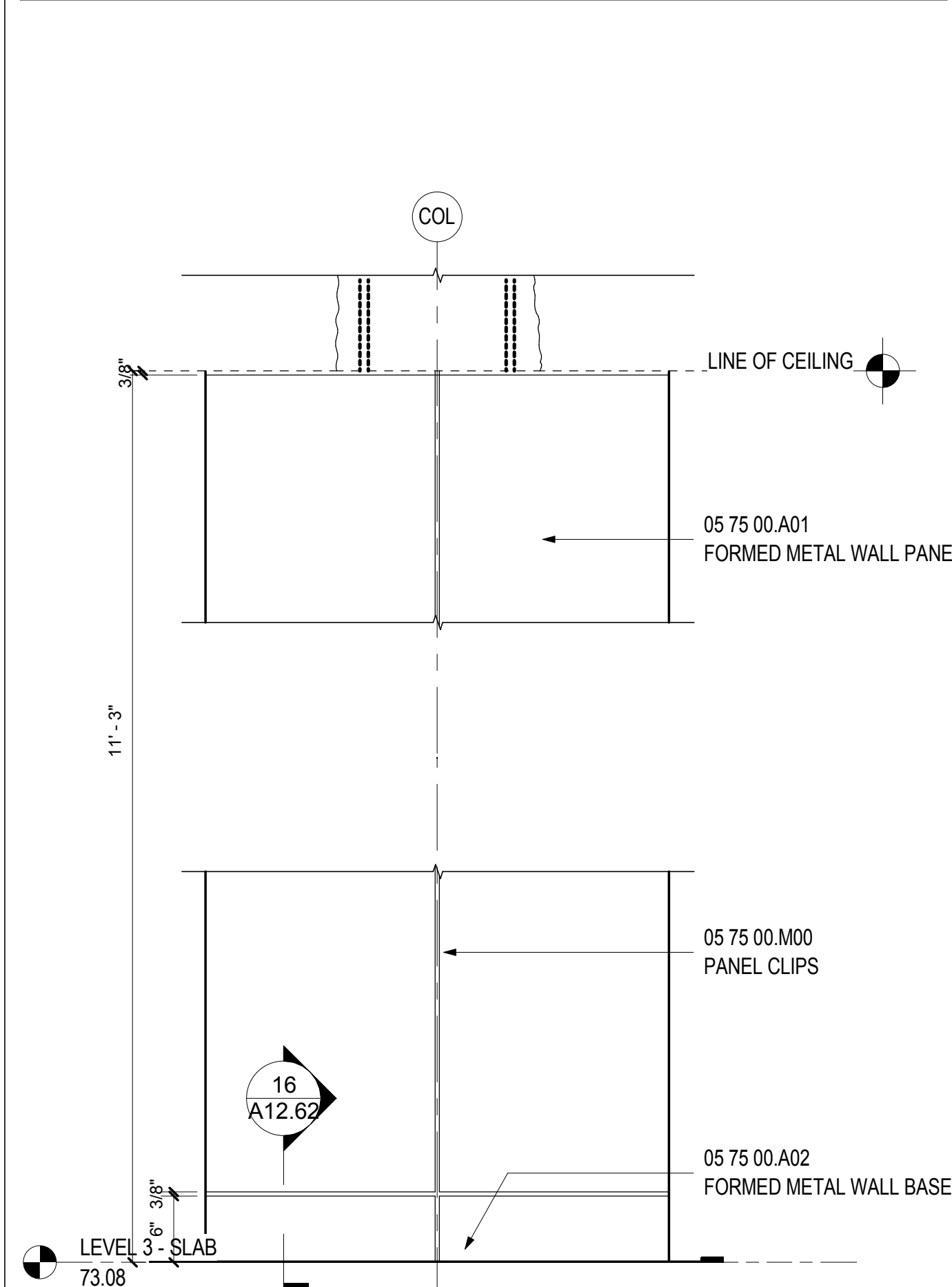
SIDE ELEV OF COLUMN @ CONCOURSE 5
SCALE: 1" = 1'-0" A12.70



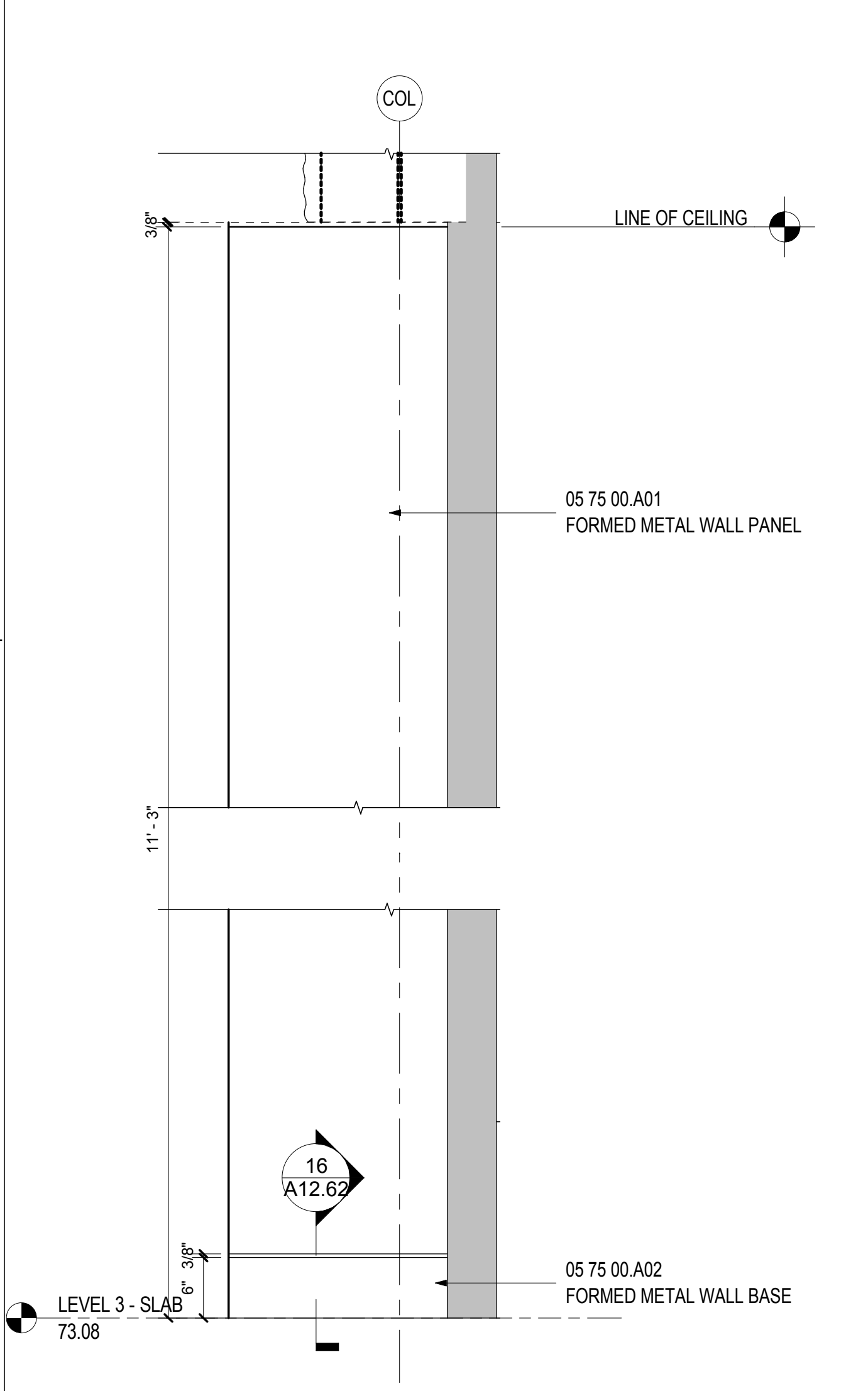
TYP. COL @ CONCOURSE
SCALE: 1" = 1'-0" A12.70



TYP COL @ HOLDROOM ELEV
SCALE: 1" = 1'-0" A12.70



SIDE ELEV OF TYP COL @ HOLDROOM
SCALE: 1" = 1'-0" A12.70



ELEV OF COL @ HOLDROOM PERIMETER
SCALE: 1" = 1'-0" A12.70

SHEET NOTES

- 01 STRUCTURAL STEEL
- 02 EXISTING PIER WHERE OCCURS.
- 03 CONTRACTOR CONSTRUCTION JOINT. RE: STRUCTURAL ENGINEER DRAWINGS FOR MORE INFORMATION.
- 04 RAIN LEADER WHERE OCCURS. RE: PLUMBING PLANS FOR LOCATIONS.
- 05 STROBE (AS APPLICABLE)
- 06 BREAK METAL PAINTED P-02
- 07 WALL OUTLET (AS APPLICABLE)
- 08 6" ROOF LEADER WHERE OCCURS. RE: PLUMBING PLANS FOR LOCATIONS.
- 09 FIN TUBE ENCLOSURE. RE: MECHANICAL DRAWINGS FOR FIN TUBE INFORMATION.
- 11 GATE SIGNAGE FLAG. RE: A07 SERIES SIGNAGE DRAWINGS
- 13 SCHEDULED SPEAKER WHERE OCCURS. REFER TO AV DRAWINGS FOR ADDITIONAL INFORMATION
- 14 30% OPEN AREA PERFORATED METAL INSERT. COLOR TO MATCH ADJACENT PAINT COLOR
- 15 PROVIDE BLACK FILLER
- 16 SCHEDULED FEC DEVICE WHERE OCCURS. REFER TO CONSTRUCTION PLANS FOR LOCATION AND ADDITIONAL INFORMATION
- 17 LINE OF FOLD IN PLAN
- 18 SCHEDULED TEMPERATURE SENSOR WHERE OCCURS. REFER TO MECHANICAL DRAWINGS FOR ADDITIONAL INFORMATION
- 19 SCHEDULED PARTITION. REFER TO CONSTRUCTION PLAN FOR PARTITION TYPE AND ADDITIONAL INFORMATION
- 20 STRUCTURAL PIER. REFER TO STRUCTURAL DRAWINGS FOR ADDITIONAL INFORMATION
- 21 GLU LAM. REFER TO STRUCTURAL DRAWINGS FOR ADDITIONAL INFORMATION
- 22 1/4" AESS COVER PLATE
- 23 DASHED LINE REPRESENT WELDED SEAM. TYPICAL LOCATION TO BE ALONG THE CENTERLINE OF TAPERED STRUCTURAL STEEL
- 24 SCHEDULED LIGHT FIXTURE. RE: PROJECT MANUAL FOR MORE INFORMATION
- 25 GLU LAM BRACKET. REFER TO STRUCTURAL DRAWINGS FOR ADDITIONAL INFORMATION
- 26 OPEN TOP TO ALLOW FOR CONNECTION TO STRUCTURAL STEEL COLUMN
- 27 LINE OF COLUMN ENCLOSURE AND LIGHT COVE BELOW
- 28 AESS ENCLOSURE TO EXTEND BEYOND ROUND ENCLOSURE
- 29 TAPERED STRUCTURAL STEEL. REFER TO STRUCTURAL DRAWINGS FOR ADDITIONAL INFORMATION
- 30 LIGHT COVE SHIELD. CORRDINATE HEIGHT WITH SELECTED LIGHT FIXTURE MANUFACTURES DIMENSIONS
- 31 COORDINATE CLEAR WIDTH AND HEIGHT WITH SELECTED LIGHT FIXTURE MANUFACTURES DIMENSIONS
- 32 MOCK UP: AESS TREE COLUMN
- 33 EMBED ANGLE
- 34 STRUCTURAL WIND GIRT. MAINTAIN 3/4" REVEAL AROUND STEEL
- 35 MULLION BEYOND
- 36 PRECAST PANEL TO RUN 2" ABOVE 6" STUD IN METAL SOFFIT ASSEMBLY

GENERAL NOTES

- A COLUMN COVERS GENERALLY TO BE 6" ABOVE FINISHED CEILING.
- B REFER TO A00.13 FOR DEVICE MOUNTING HEIGHT. COORDINATE WITH APPROVED CUT SHEET FOR OPENING SIZE.
- C REFER TO ELEVATIONS FOR LOCATION OF REVEALS.
- D REFER TO SHEET A00.13 FOR TYPICAL MOUNTING HEIGHTS. U. O. N.

Portland International Jetport
1001 Westbrook Street
Portland, Maine 04102

2020 K Street, Northwest
Suite 200
Washington DC 20006
Telephone 202.721.5200
Facsimile 202.872.8587

Gensler

Issue	Date & Issue Description	By	Check
01	01/22/09		
02	95% CONSTRUCTION DOCUMENTS		
02	10/26/09		
	ISSUED FOR PERMIT		

Seal/Signature

Project Name
PWM Terminal Enhancement

Project Number
09-6395-000

Description
INTERIOR COLUMN DETAILS

Scale
As indicated

A12.72

© 2009 Gensler