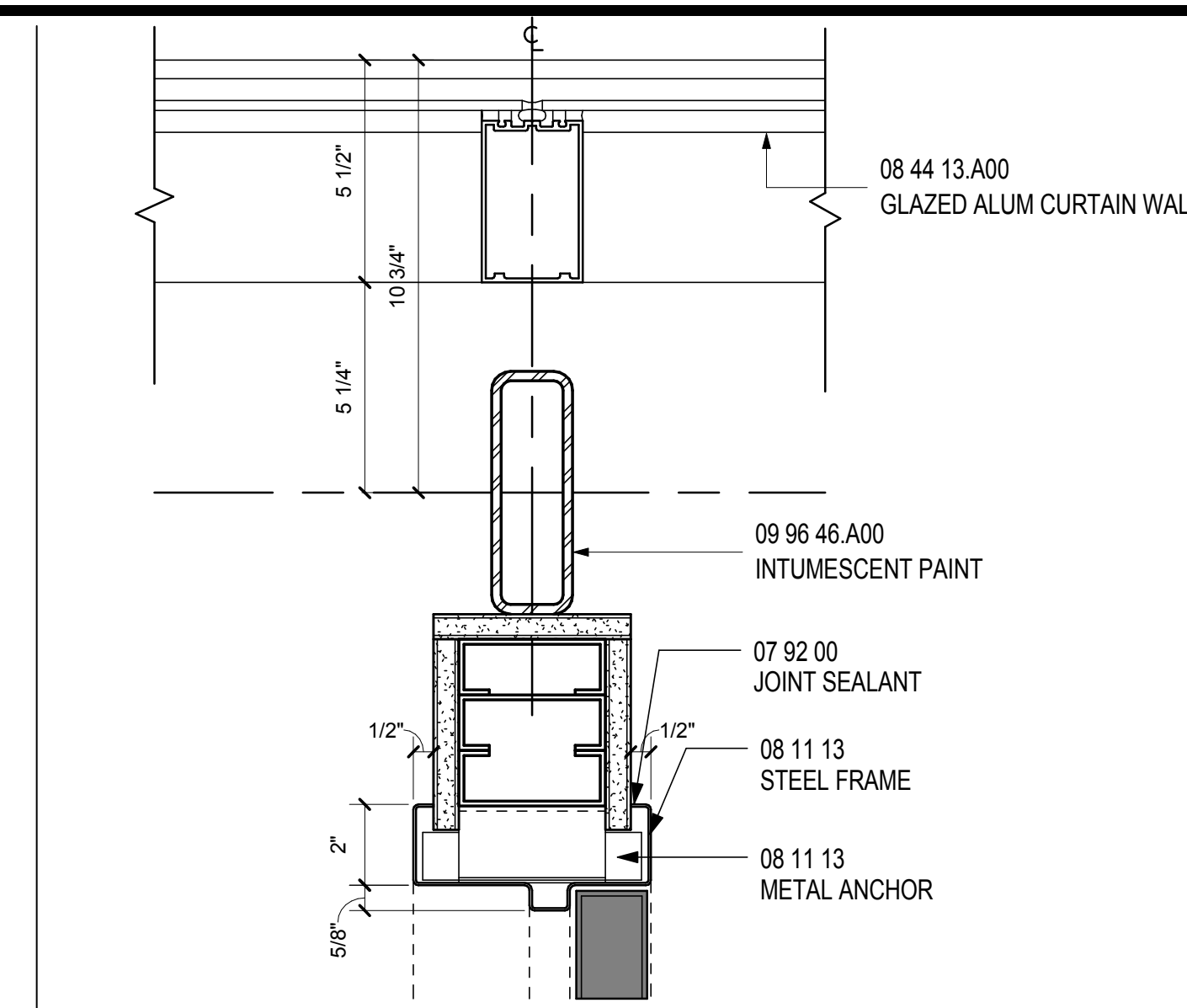
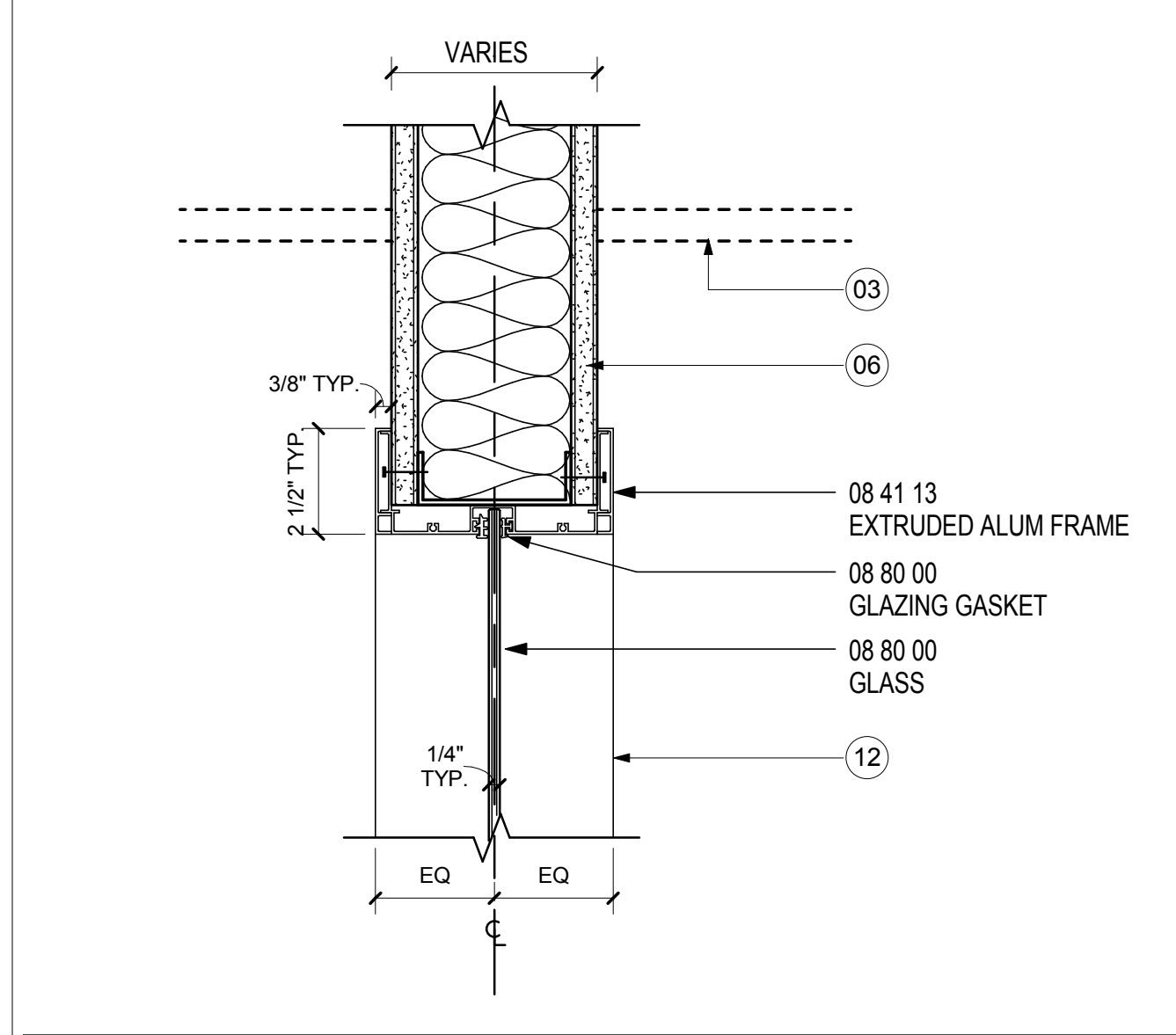


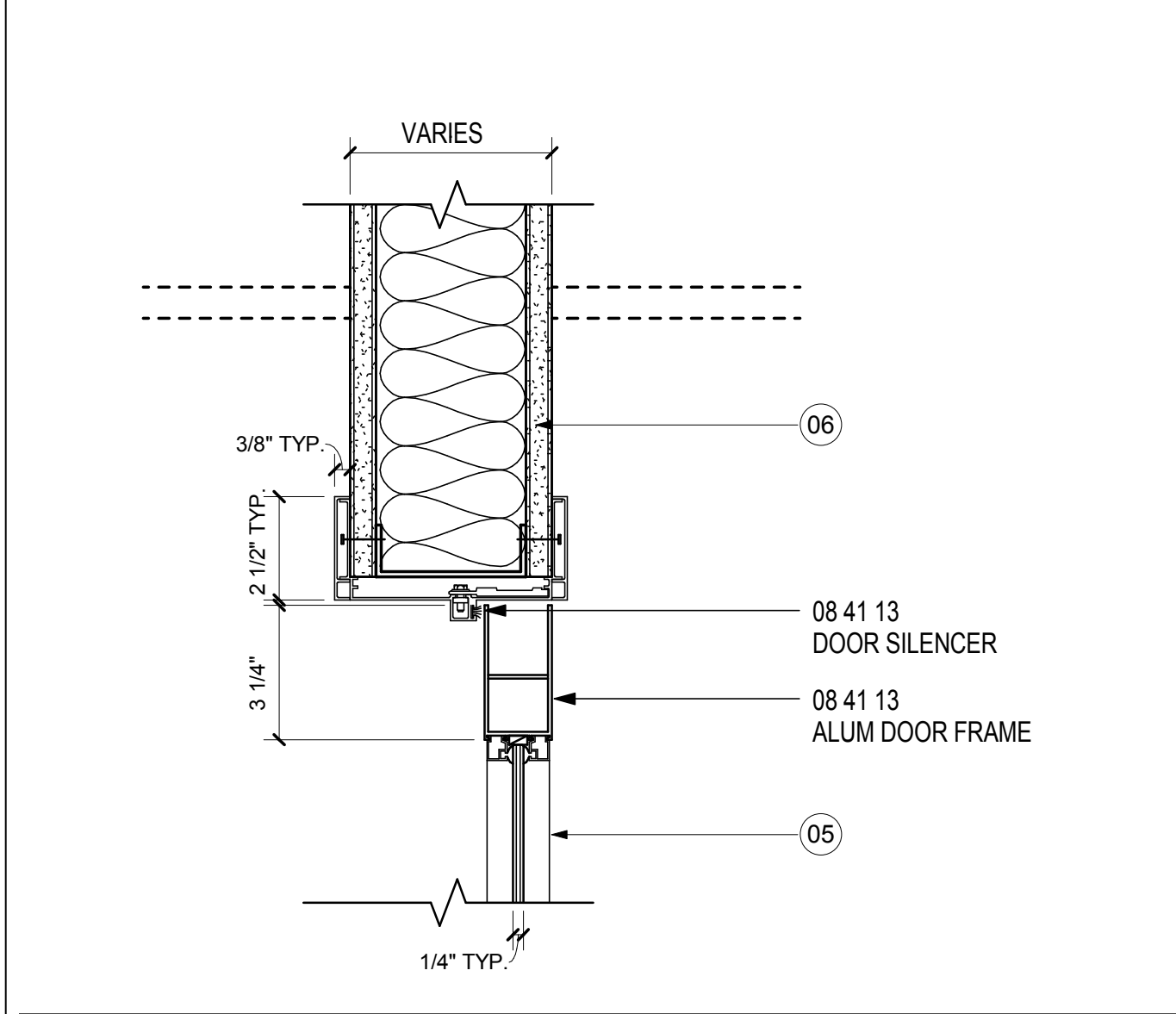
JAMB-INT.CUR.WALL- CORRIDOR
SCALE: 3" = 1'-0"



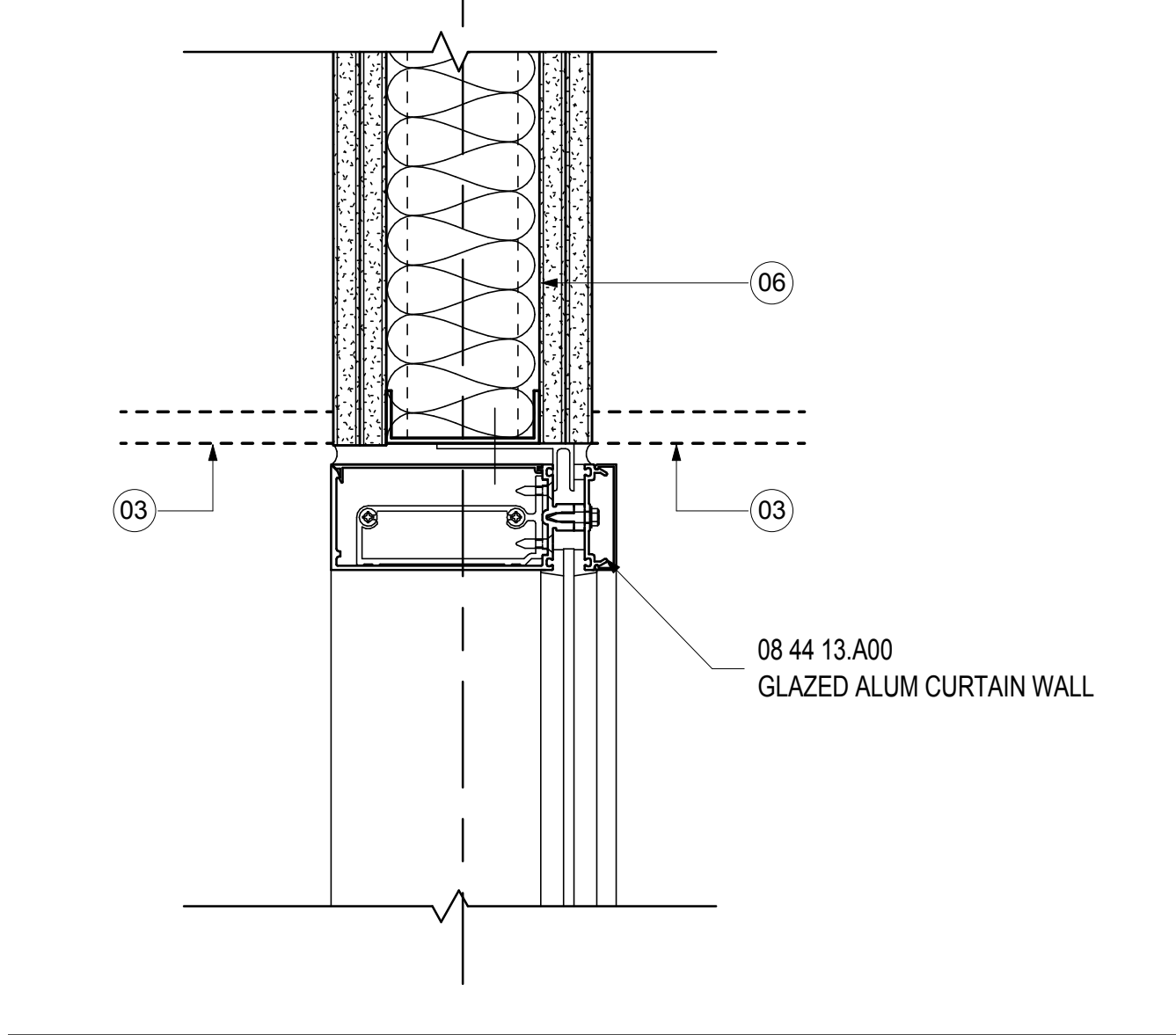
MULLION-INT.CUR.WALL- CORRIDOR
SCALE: 3" = 1'-0"



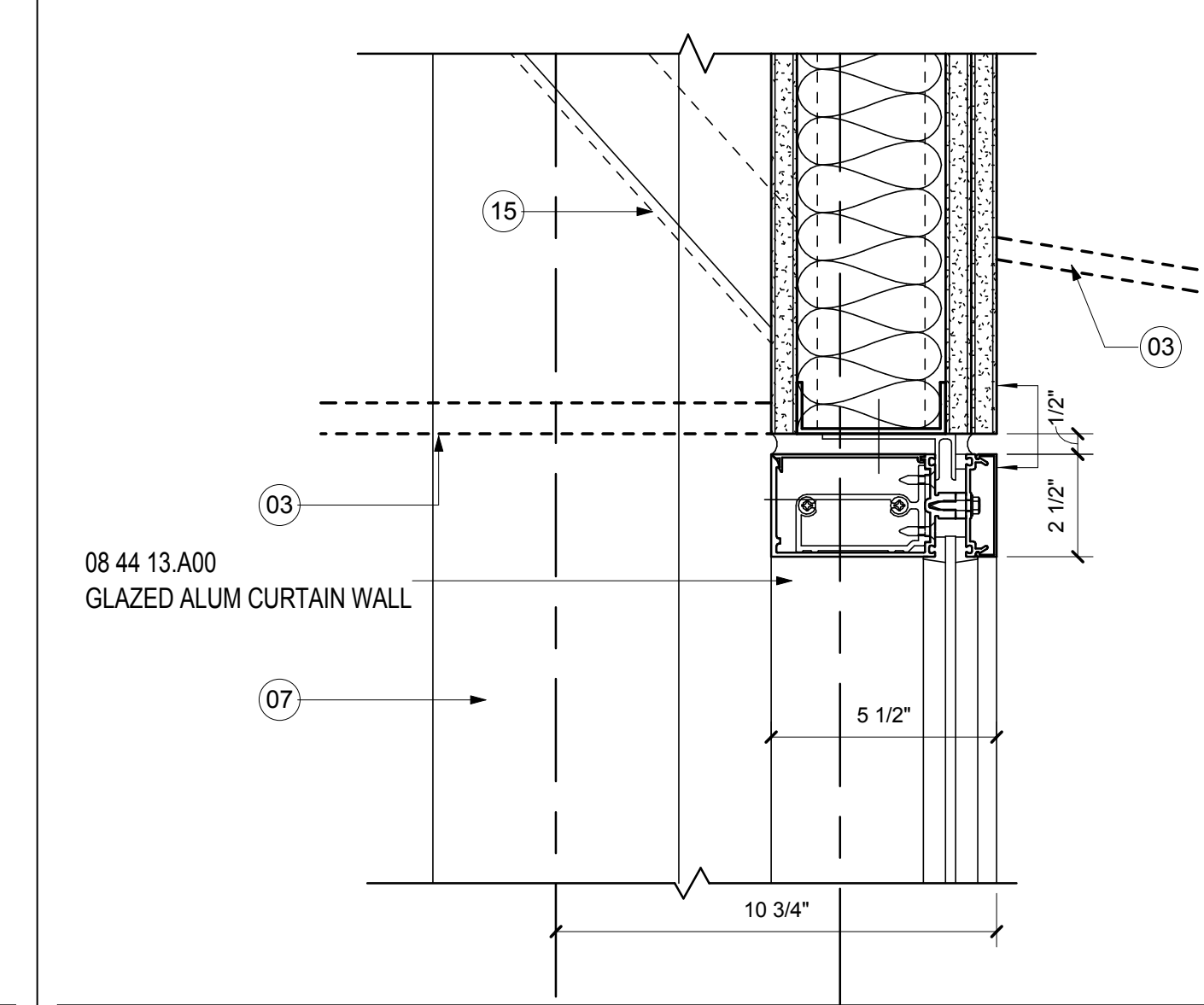
HEAD 3- DOOR TYPE C- STOREFRONT
SCALE: 3" = 1'-0"



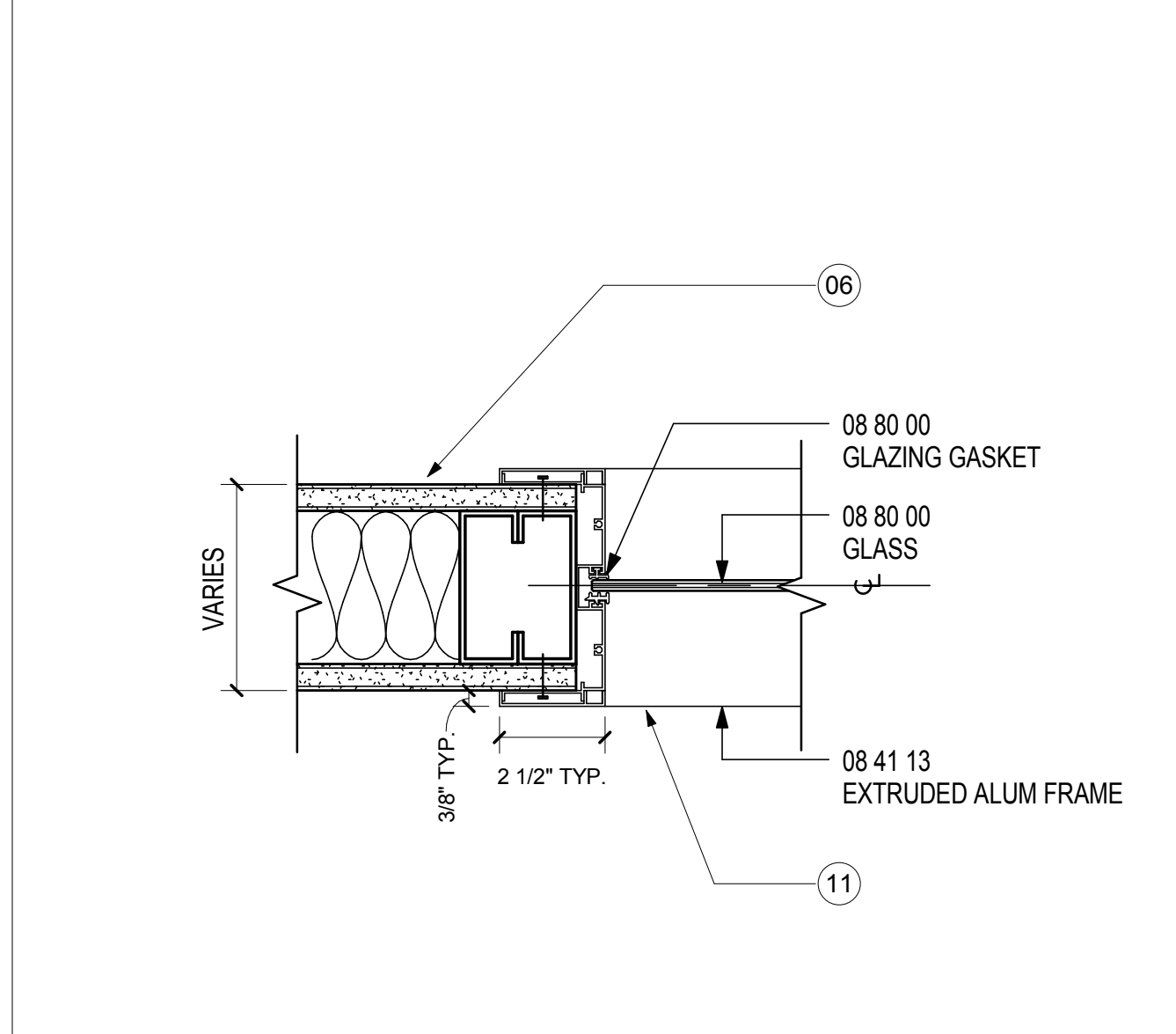
HEAD 1- DOOR TYPE C- STOREFRONT
SCALE: 3" = 1'-0"



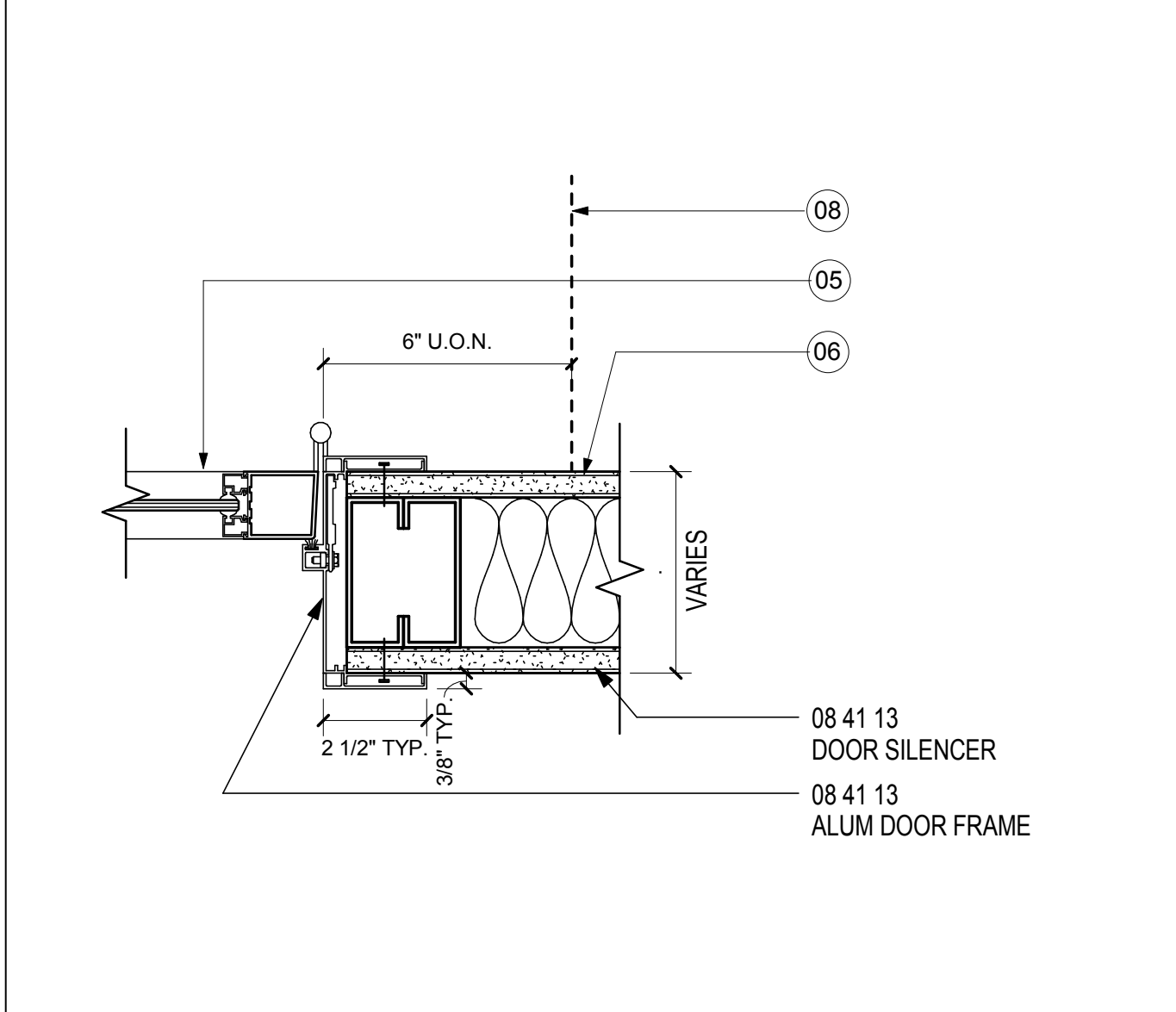
HEAD-INT.CUR.WALL-SSCP/TICKETING
SCALE: 3" = 1'-0"



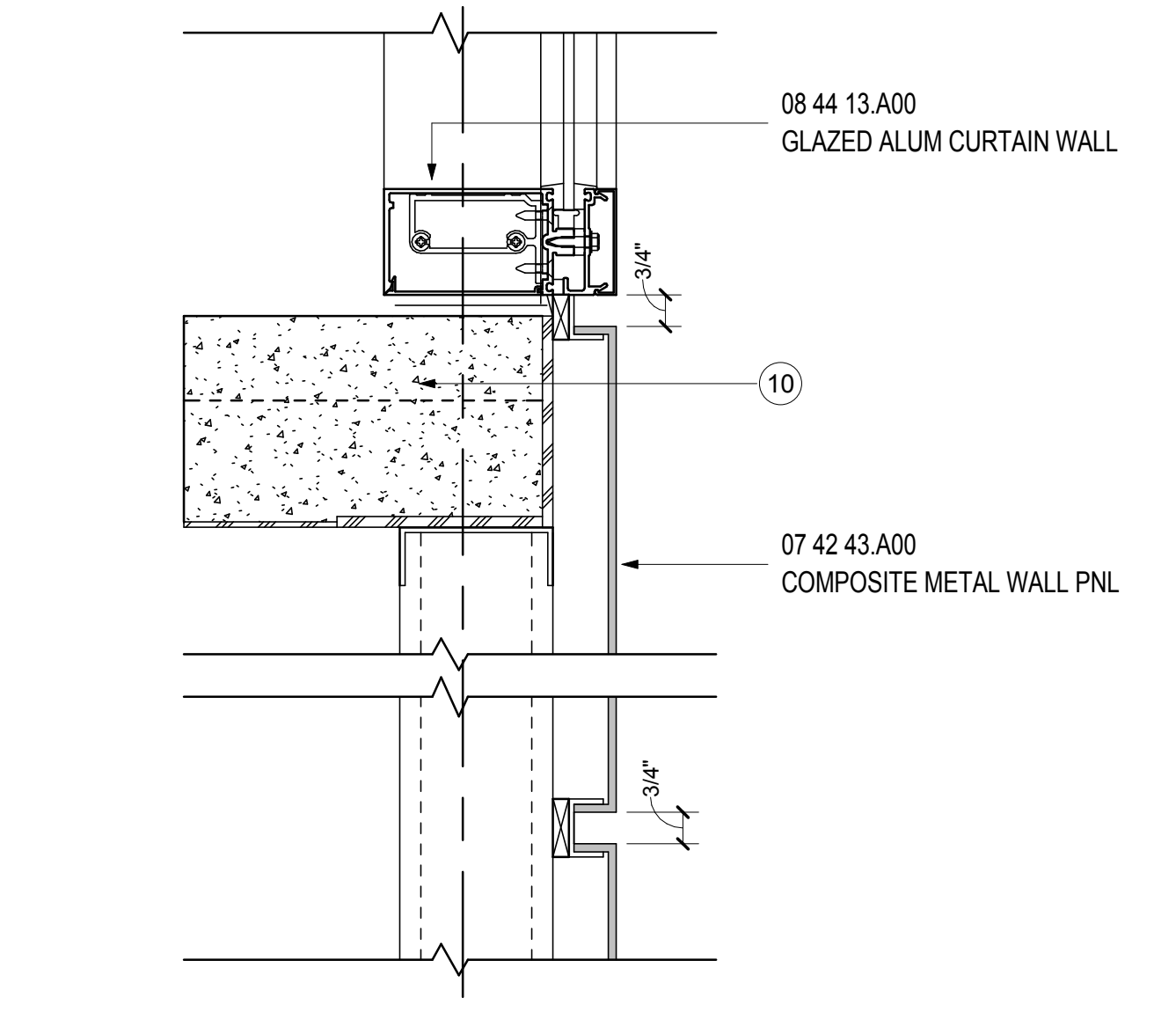
HEAD-INT.CUR.WALL- CORRIDOR
SCALE: 3" = 1'-0"



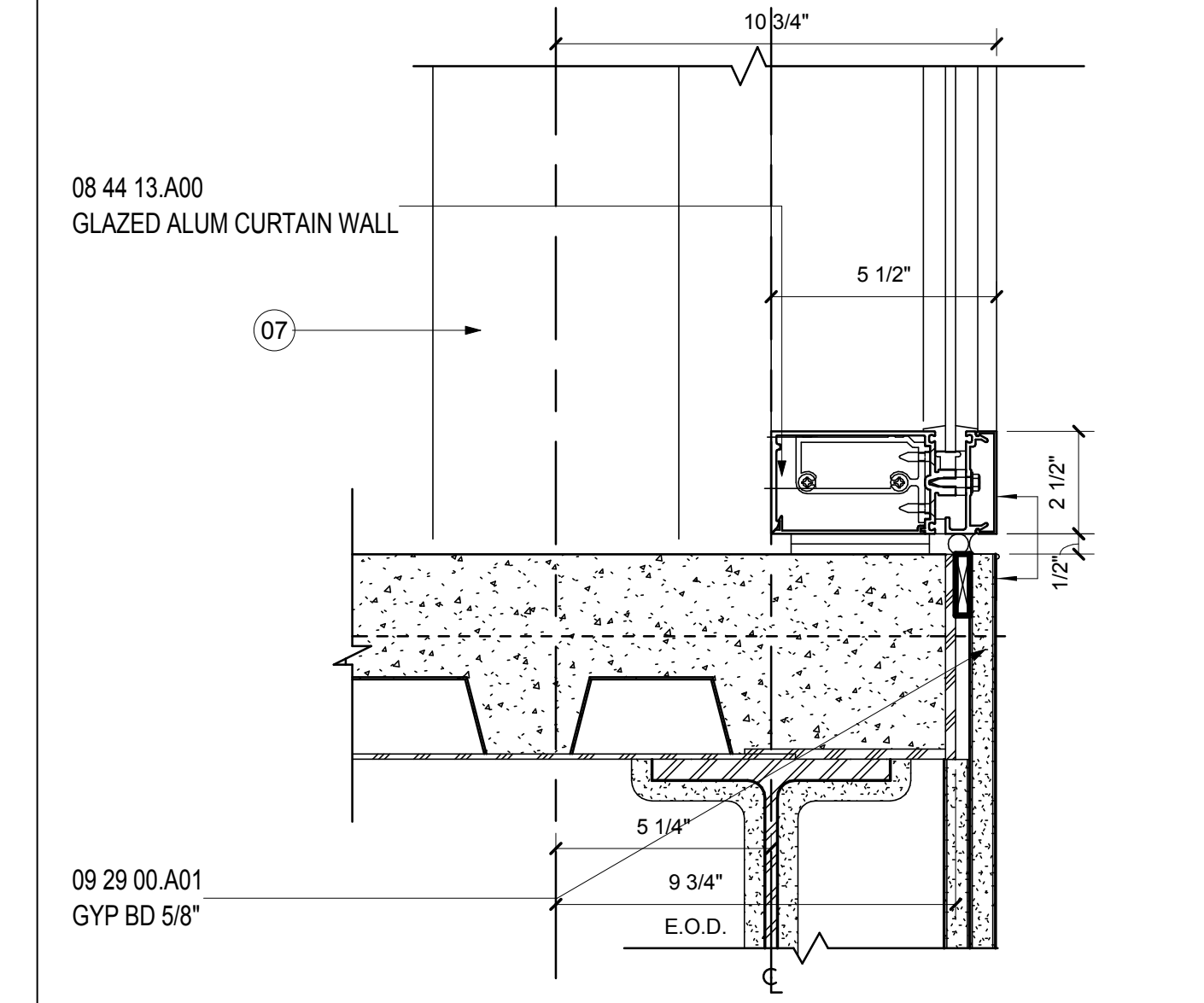
JAMB 3- DOOR TYPE C- STOREFRONT
SCALE: 3" = 1'-0"



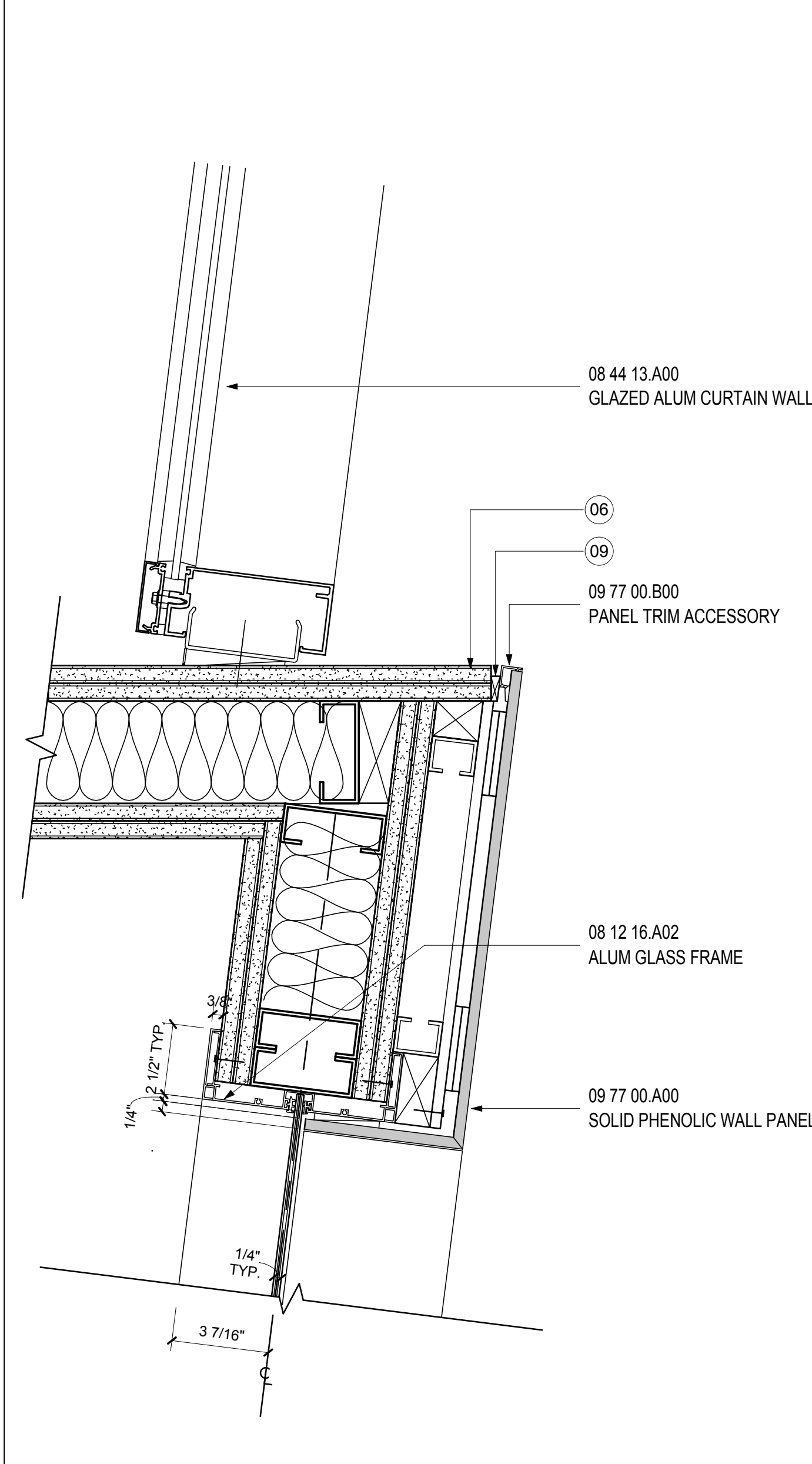
JAMB 1- DOOR TYPE C- STOREFRONT
SCALE: 3" = 1'-0"



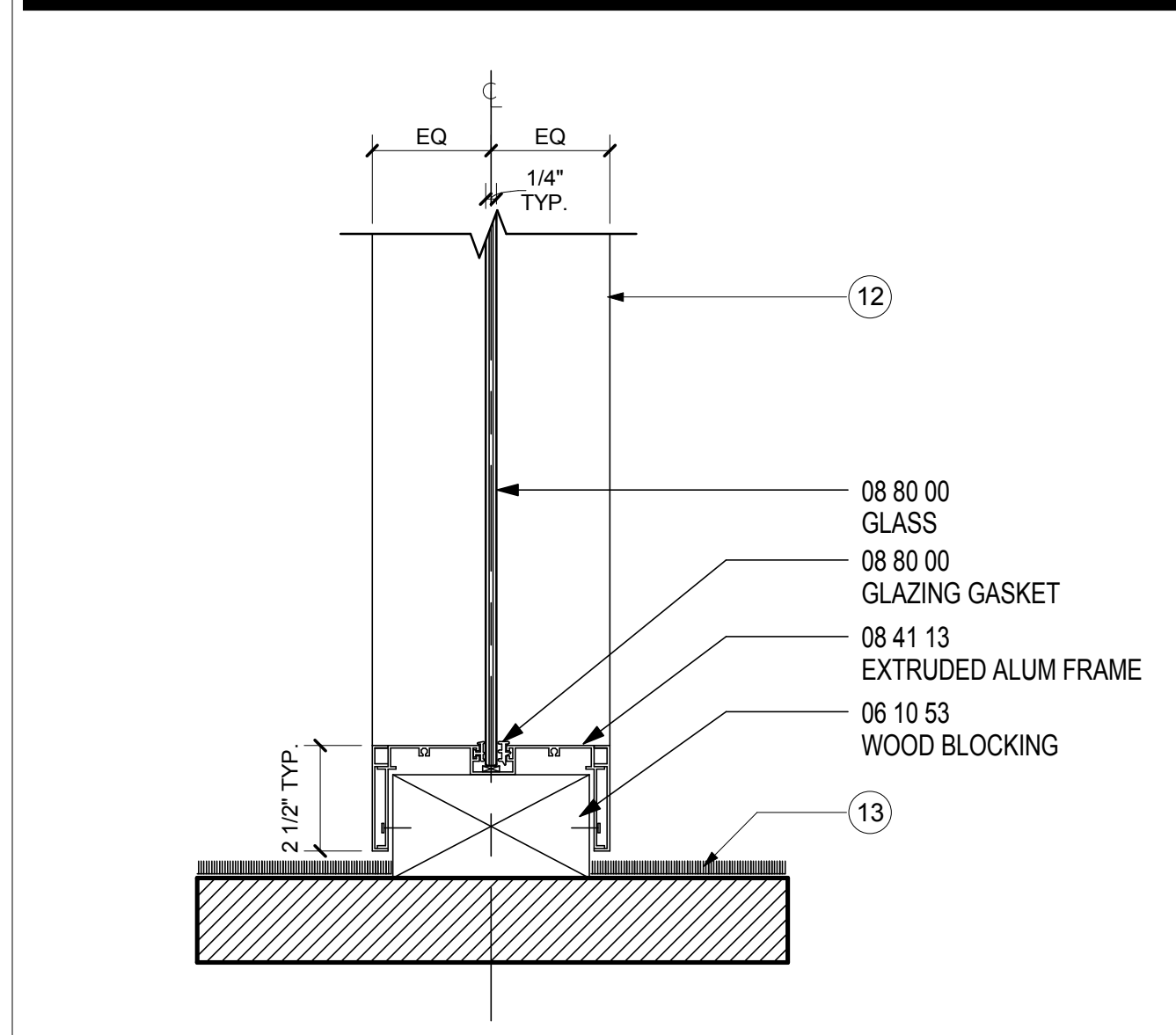
SILL-INT.CUR.WALL-SSCP/TICKETING
SCALE: 3" = 1'-0"



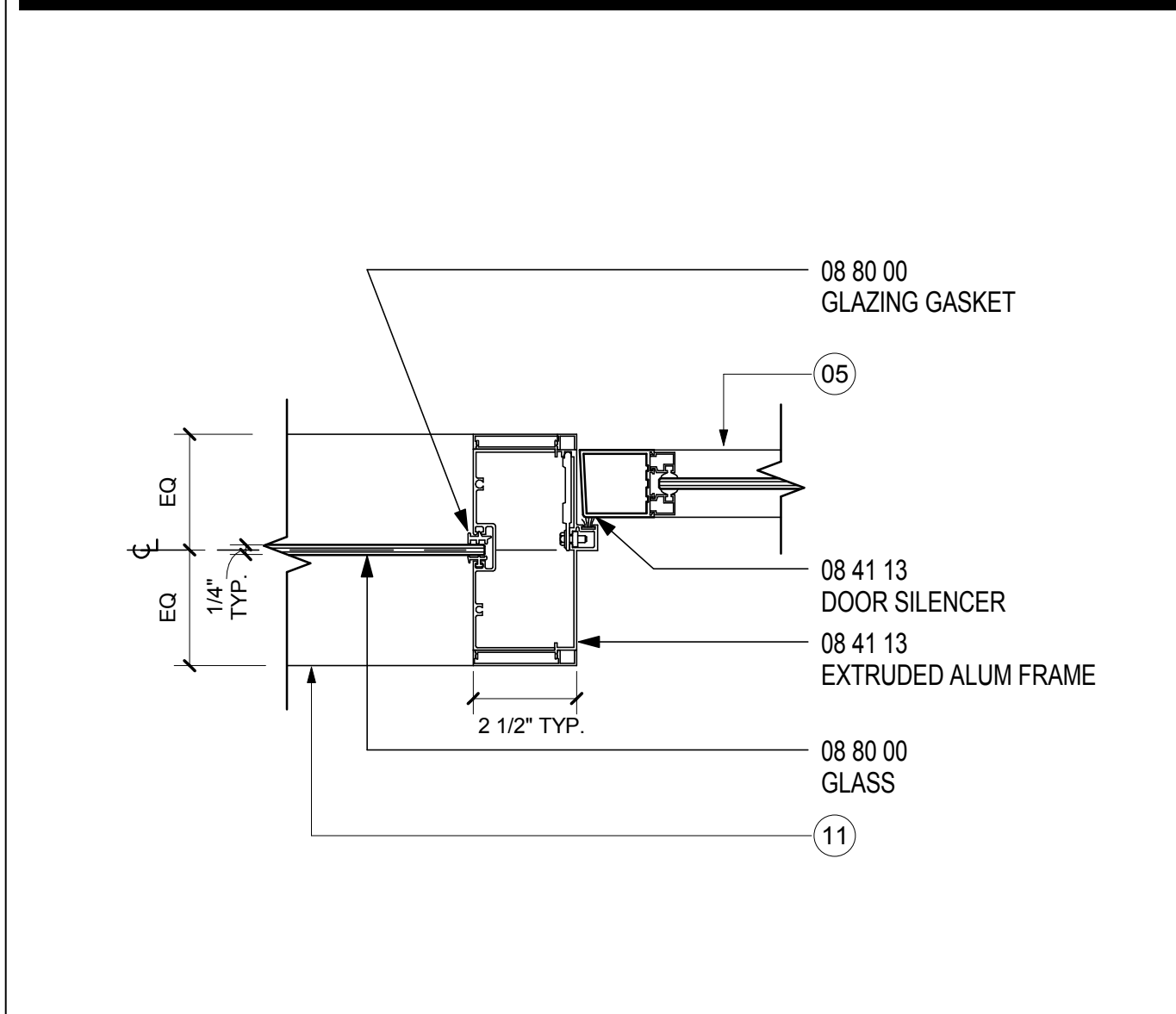
SILL 1-INT.CUR.WALL- CORRIDOR
SCALE: 3" = 1'-0"



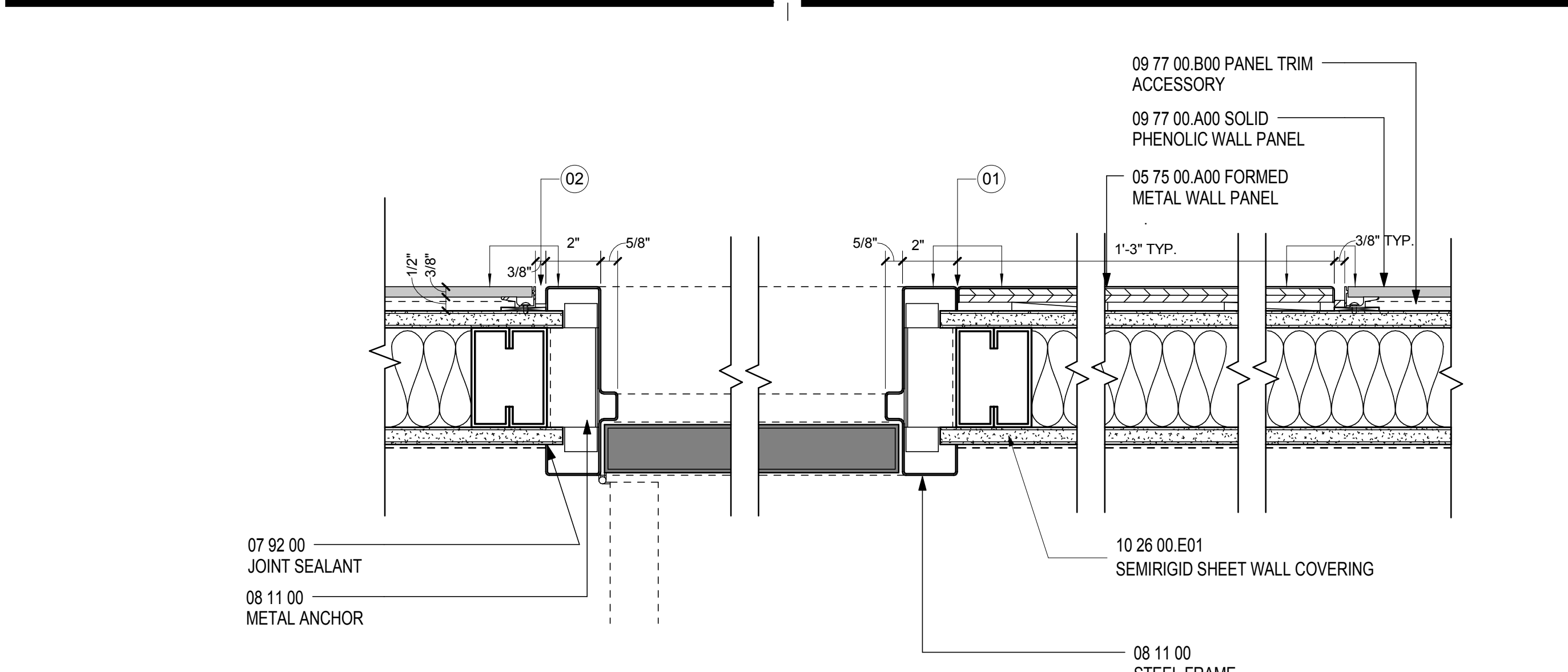
JAMB-INT.CUR.WALL AT LEO ROOM
SCALE: 3" = 1'-0"



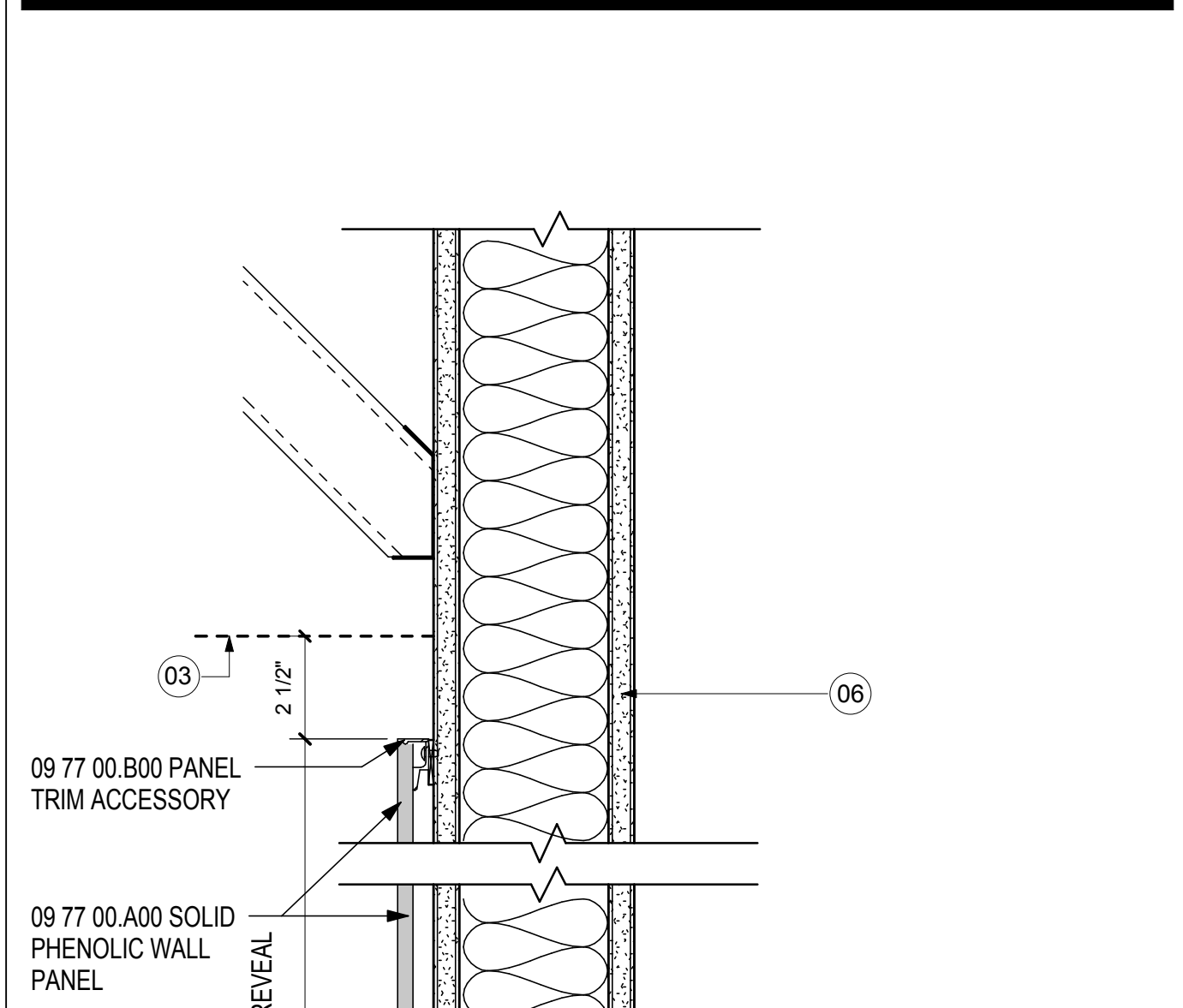
SILL- DOOR TYPE C- STOREFRONT
SCALE: 3" = 1'-0"



JAMB 2- DOOR TYPE C- STOREFRONT
SCALE: 3" = 1'-0"



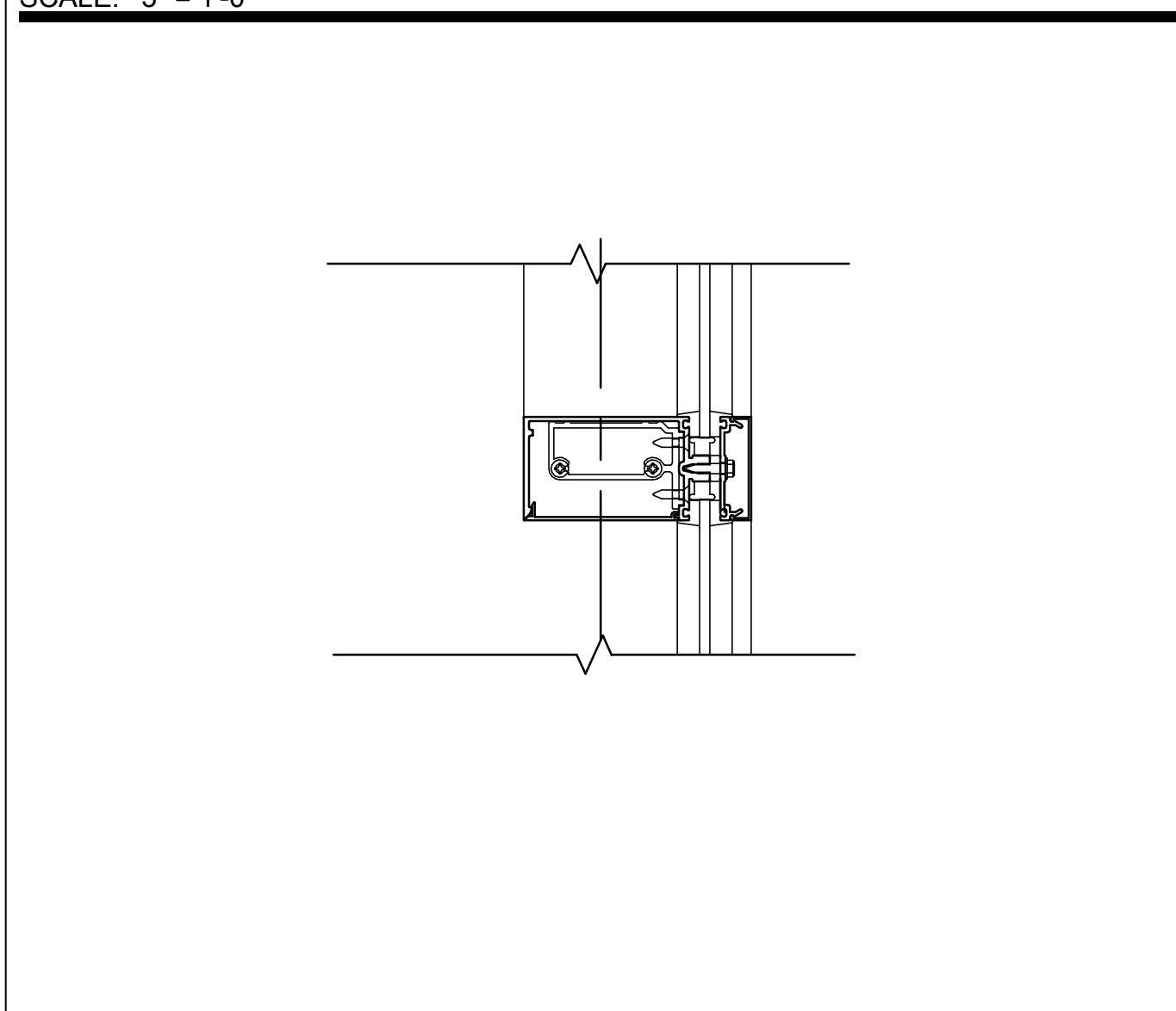
JAMB- DOOR TYPE B
SCALE: 3" = 1'-0"



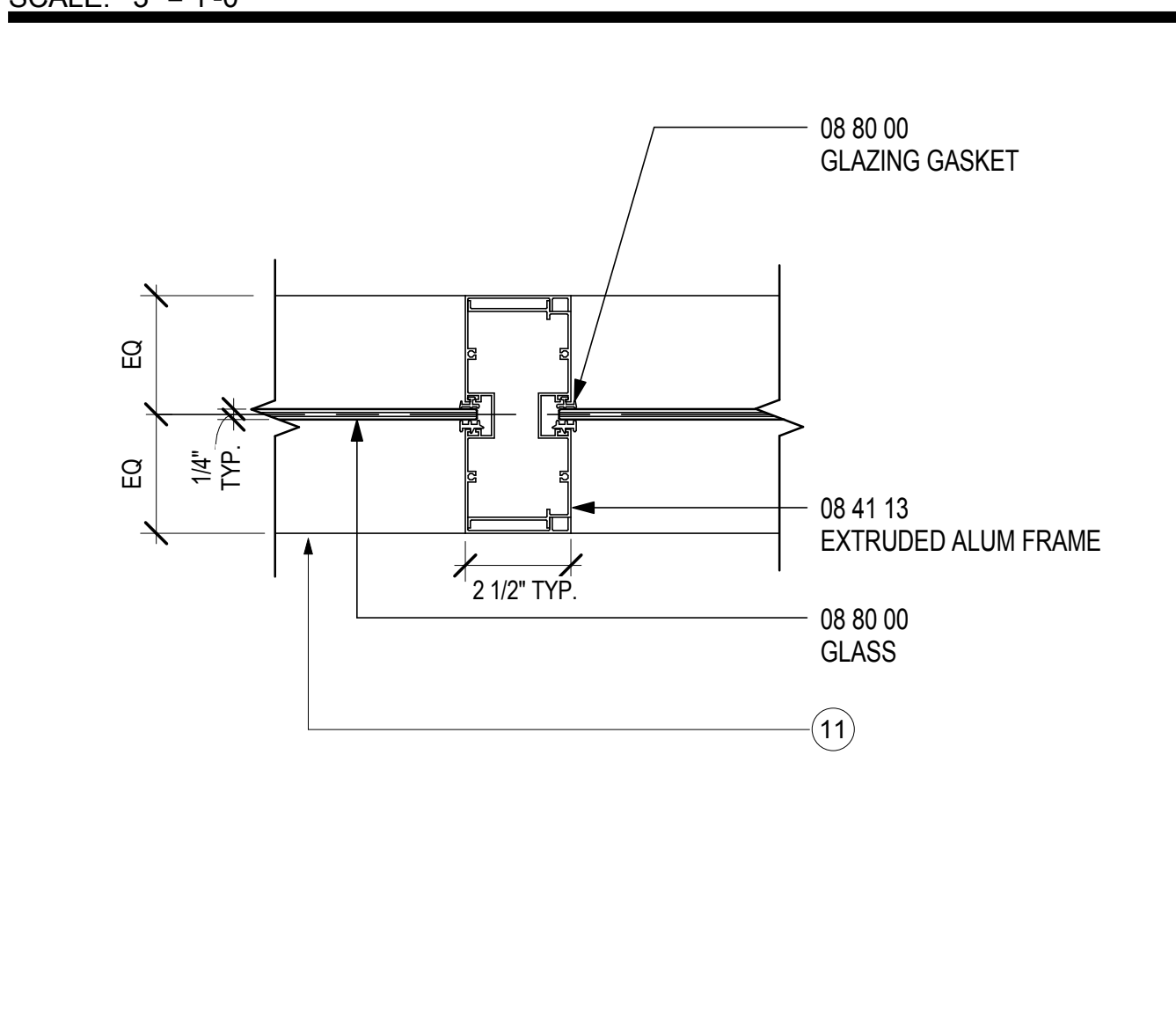
JAMB-INT.CUR.WALL AT LEO ROOM
SCALE: 3" = 1'-0"



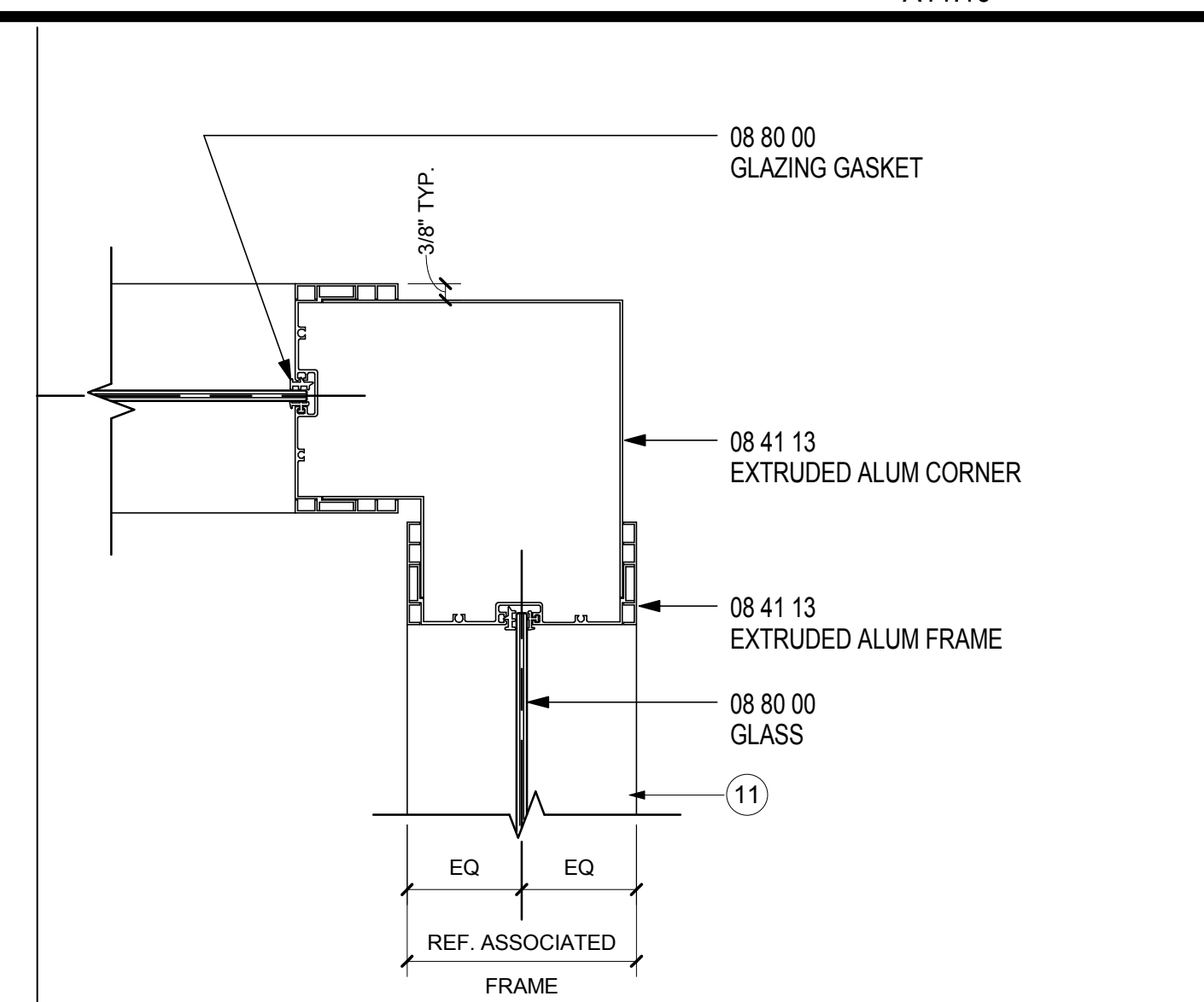
INTERMED MULLION-SSCP/TICKETING
SCALE: 3" = 1'-0"



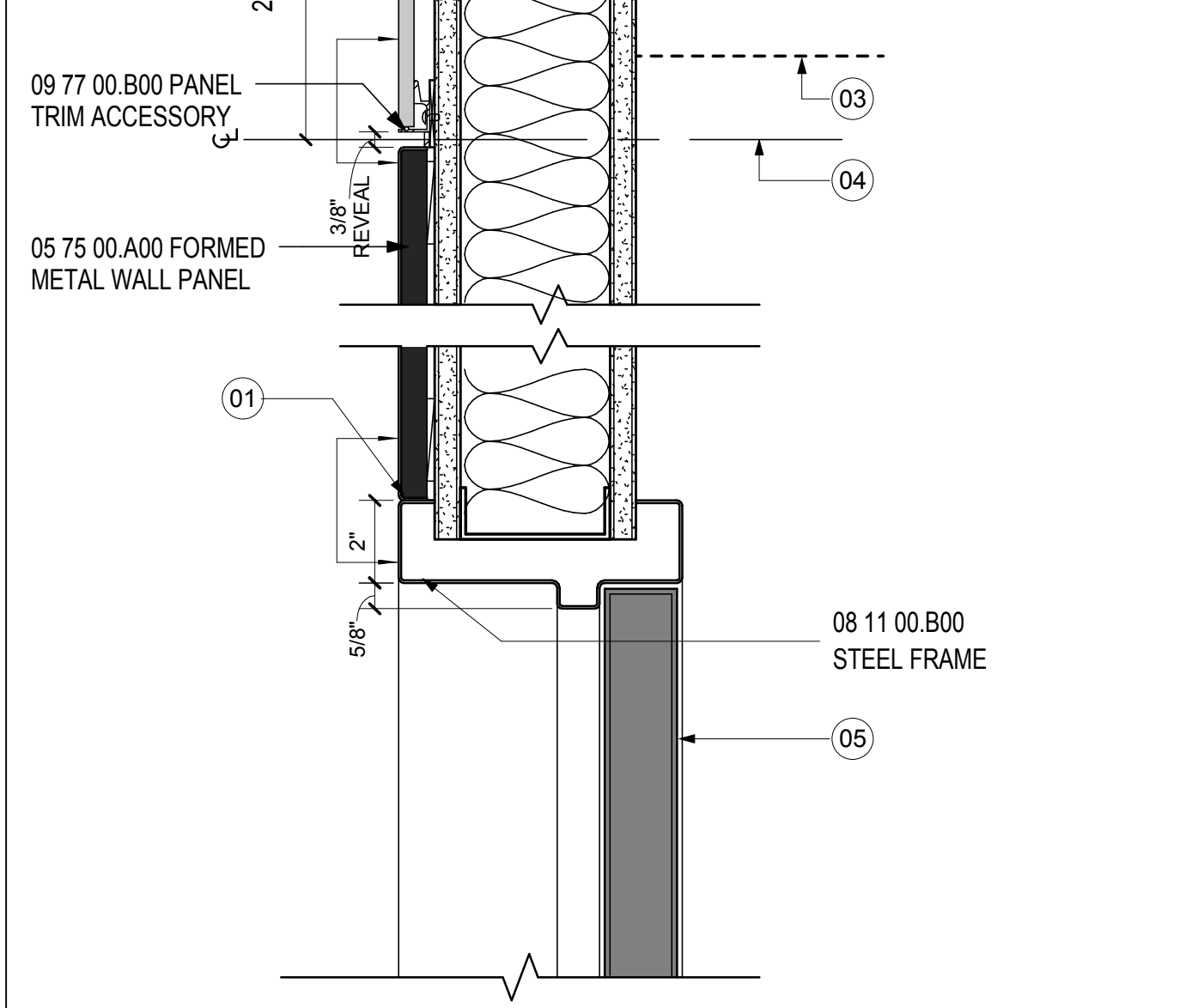
MULLION- DOOR TYPE C- STOREFRONT
SCALE: 3" = 1'-0"



CORNER DETAIL- STOREFRONT
SCALE: 3" = 1'-0"



HEAD- DOOR TYPE B
SCALE: 3" = 1'-0"



HEAD- DOOR TYPE B
SCALE: 3" = 1'-0"

- SHEET NOTES**
- BUTT JOINT BETWEEN PANEL AND JAMB
 - PROVIDE STAINLESS STEEL FLATSTOCK REVEAL, TYP AT DOOR TYPE B
 - SCHEDULED CEILING, RE: A04 SERIES FOR REFLECTED CEILING PLANS
 - ALIGN WITH CENTER LINE OF EXTERIOR CURTAINWALL MULLION
 - SCHEDULED DOOR, RE: A00.30 FOR DOOR SCHEDULE
 - SCHEDULED PARTITION, RE: A02 SERIES FOR CONSTRUCTION PLAN AND PARTITION TYPES. VERIFY THICKNESS.
 - STRUCTURAL STEEL, RE: STRUCTURAL DRAWINGS FOR ADDITIONAL INFORMATION
 - SCHEDULED ADJACENT PARTITION WHERE OCCURS, RE: CONSTRUCTION PLAN
 - METAL REVEAL
 - CONCRETE SLAB, RE: STRUCTURAL DRAWINGS
 - LINE OF SILL BELOW
 - LINE OF JAMB BEYOND
 - SCHEDULED FINISH FLOOR, RE: A05 SERIES FOR FINISH PLANS
 - REVEAL AND FILLER TO BE PAINTED BLACK
 - PROVIDE KICKERS AS REQUIRED TO STRUCTURE ABOVE. COORDINATE LOCATIONS WITH MEP.

Portland International Jetport
1001 Westbrook Street
Portland, Maine 04102

2020 K Street, Northwest
Suite 200
Washington, DC 20006
Telephone 202.721.5200
Facsimile 202.872.8587

Gensler

Issue	Date & Issue Description	By	Check
01	01/22/09		
02	95% CONSTRUCTION DOCUMENTS		
02	10/26/09		
	ISSUED FOR PERMIT		

Seal/Signature

Project Name
PWM Terminal Enhancement

Project Number
09-6395-000

Description
INTERIOR DETAILS

Scale
3" = 1'-0"

A12.65

© 2009 Gensler