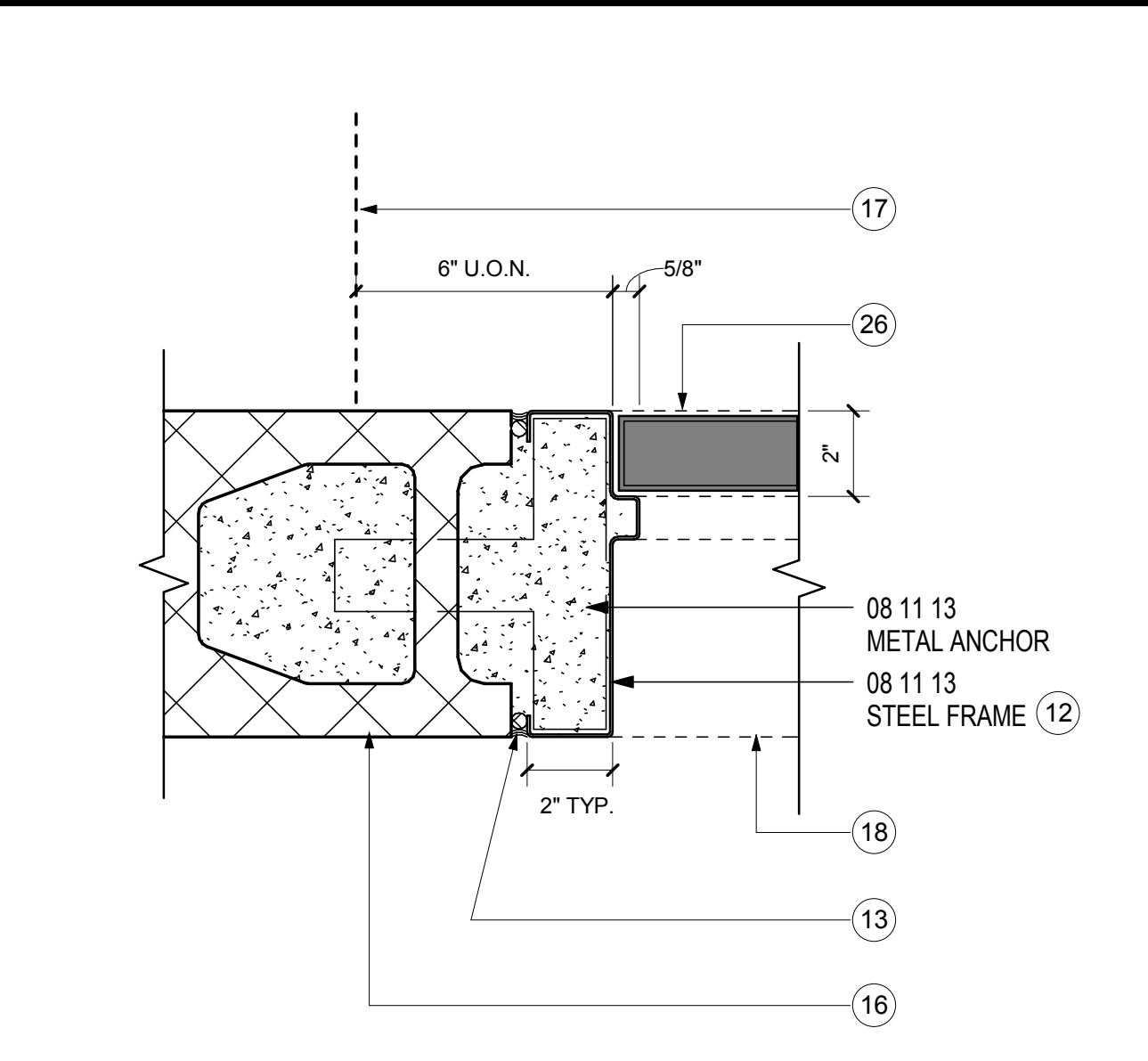
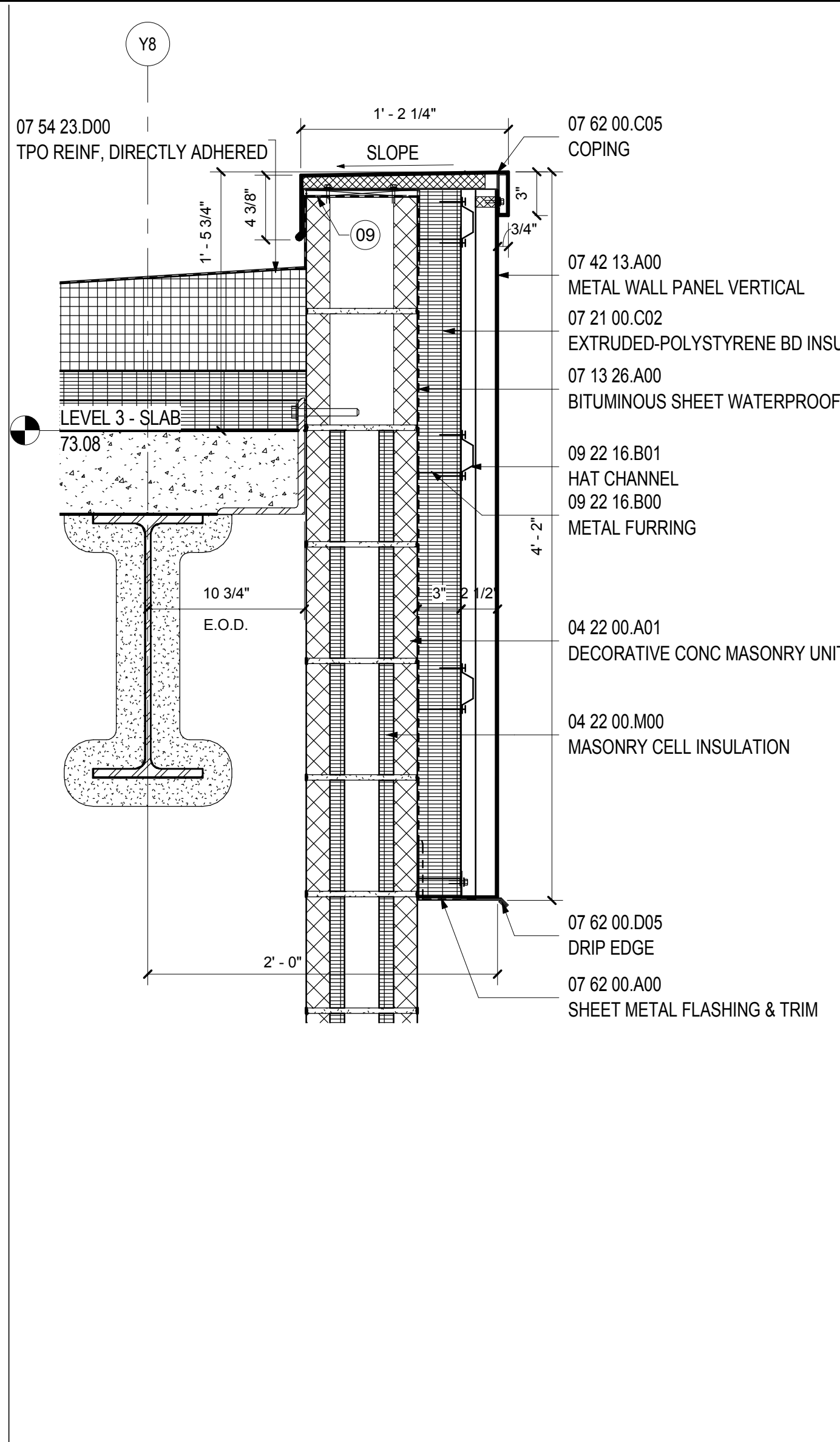


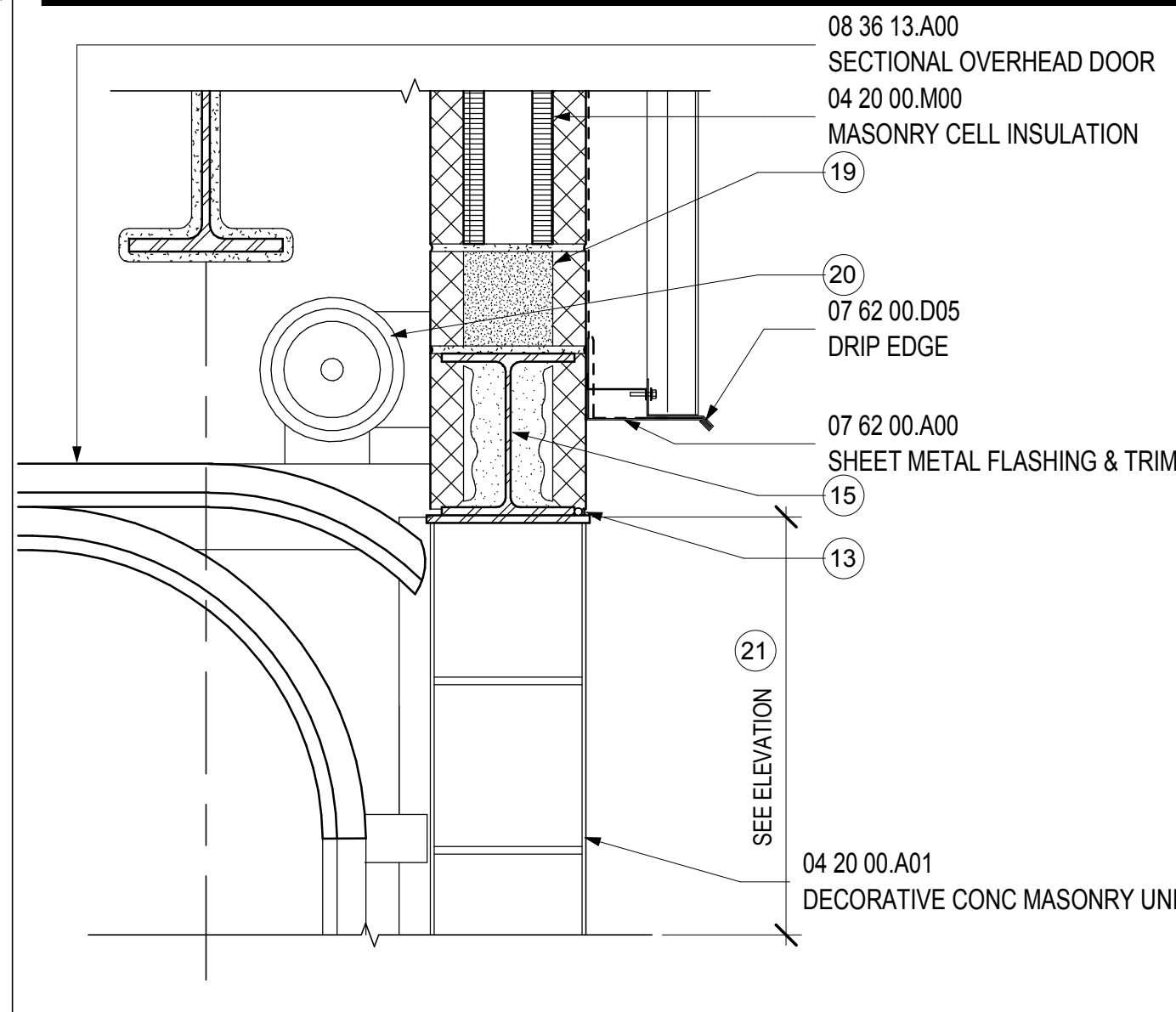
HEAD- DOOR TYPE A AT CMU- EXT. 11
SCALE: 3" = 1'-0"



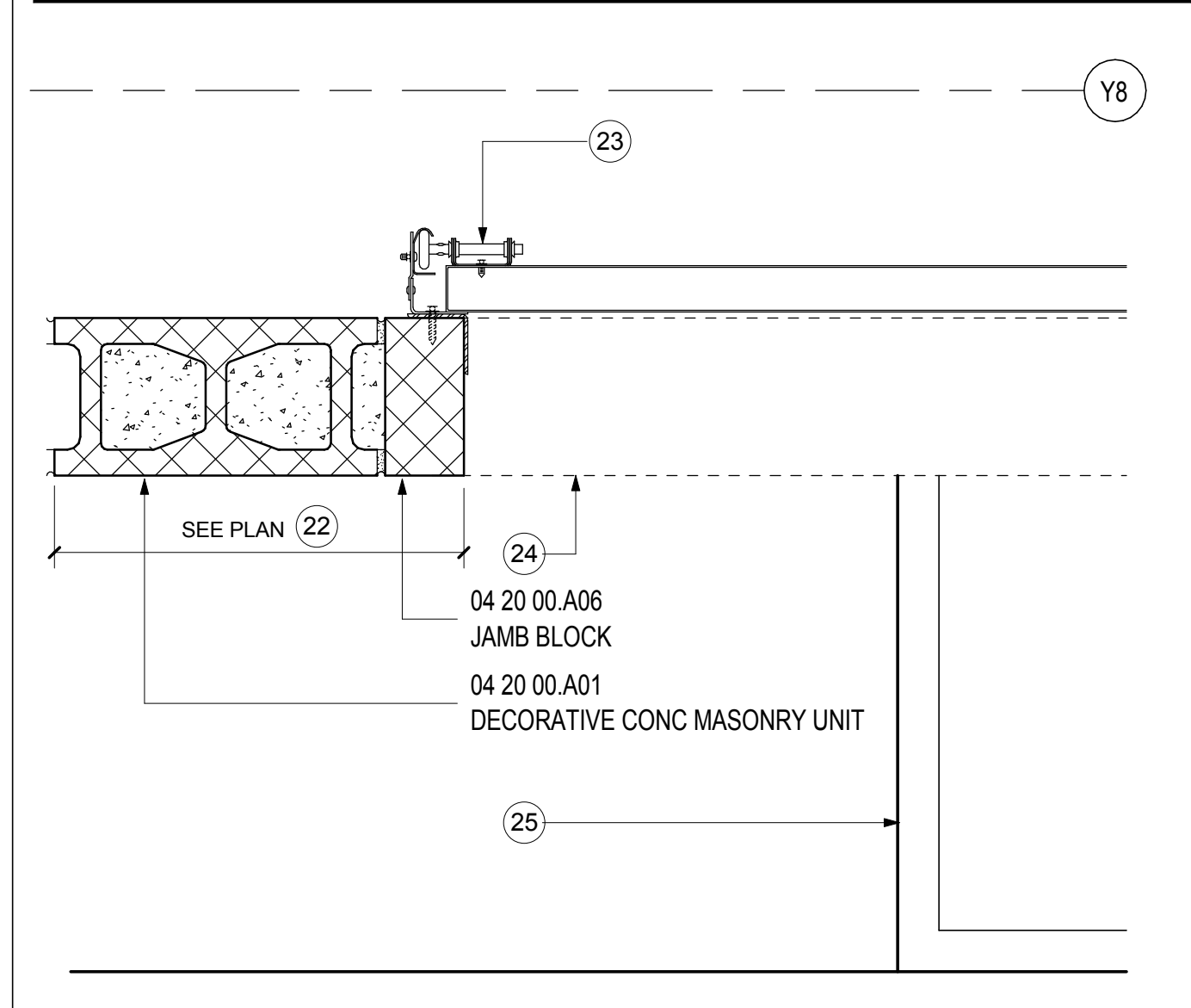
JAMB- DOOR TYPE A AT CMU- EXT. 12
SCALE: 3" = 1'-0"



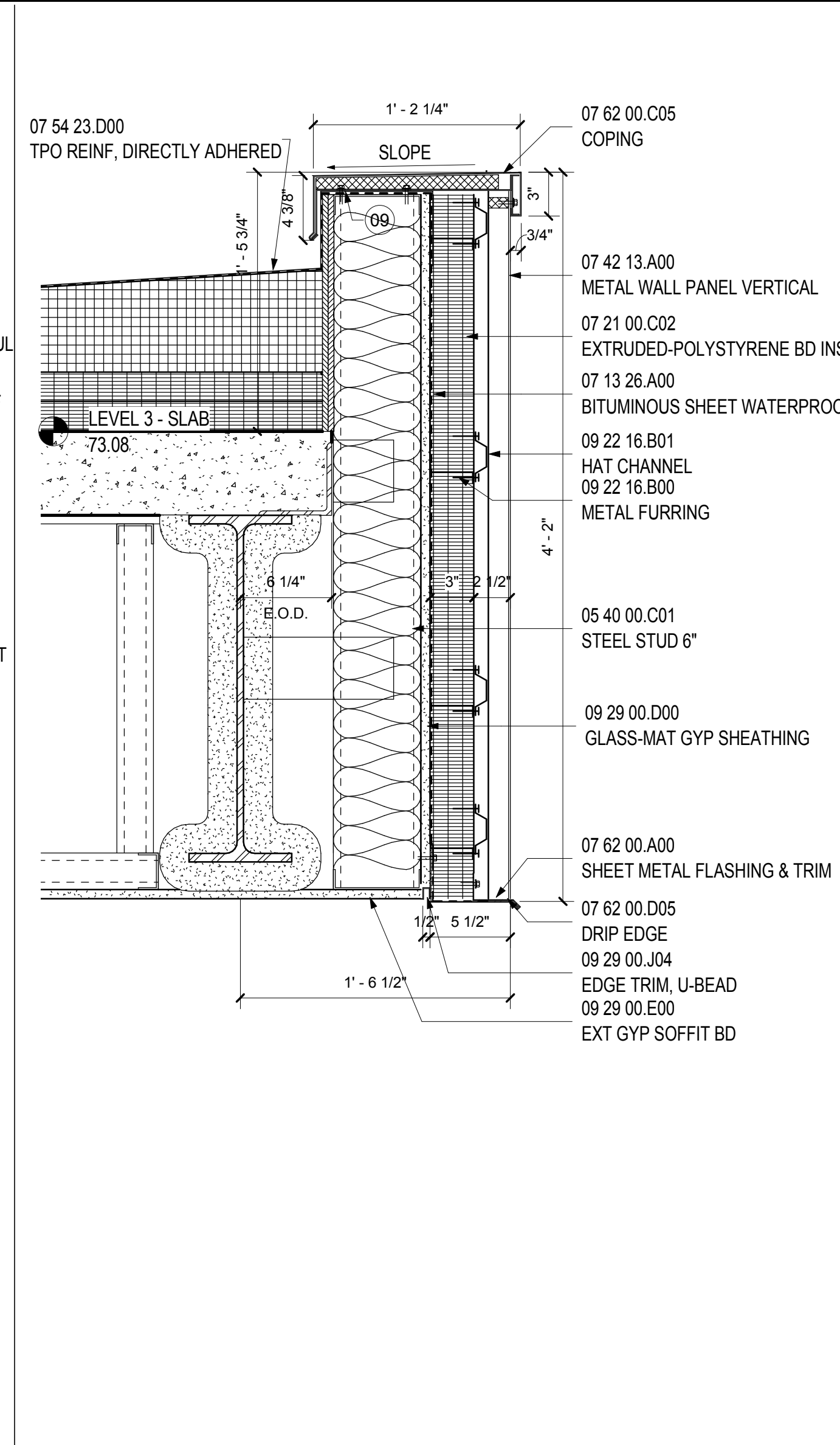
WALL TYPE E @ LOW ROOF 7
SCALE: 1 1/2" = 1'-0"



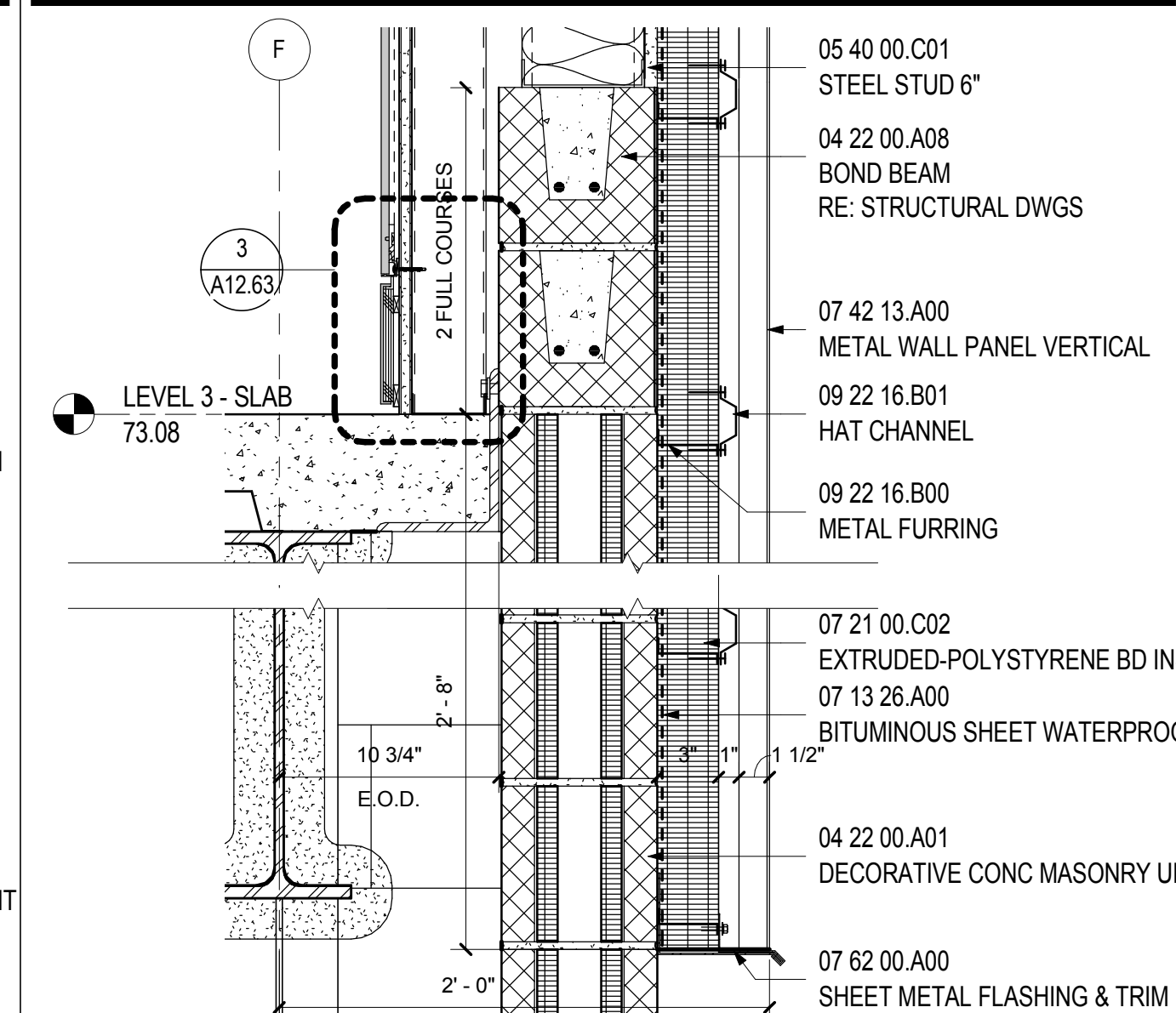
HEAD- DOOR TYPE N AT CMU 8
SCALE: 1 1/2" = 1'-0"



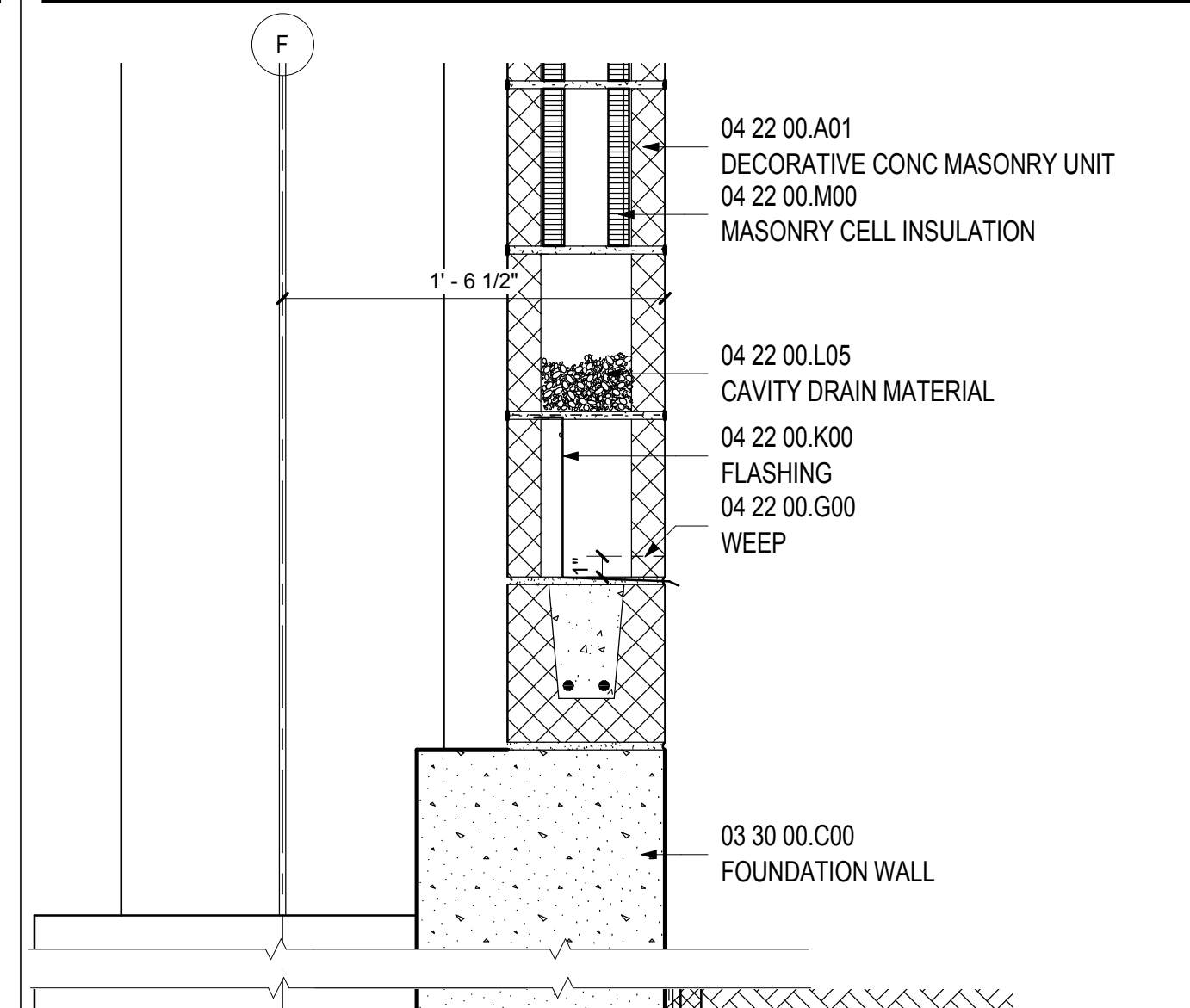
JAMB- DOOR TYPE N AT CMU 9
SCALE: 1 1/2" = 1'-0"



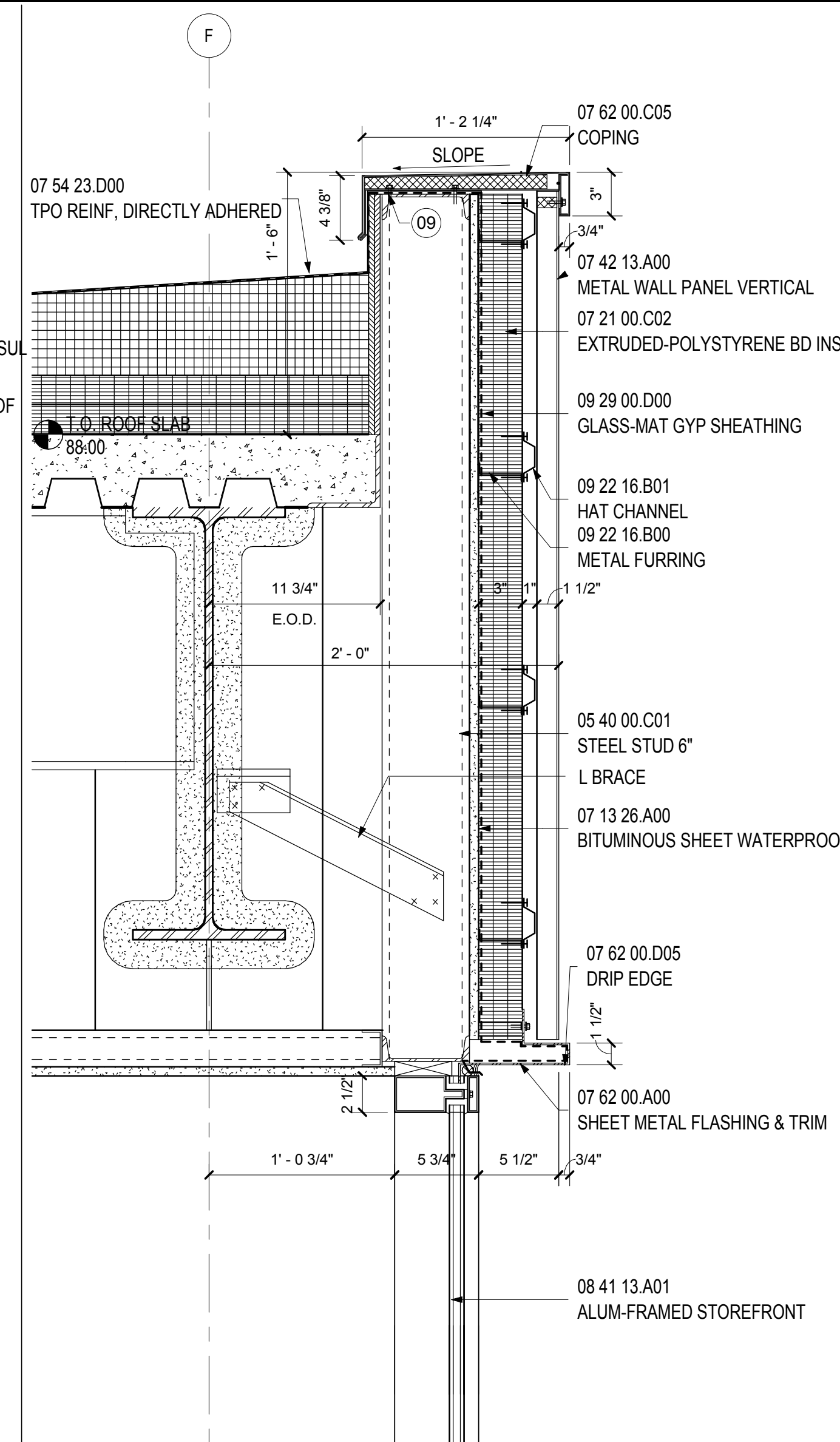
WALL TYPE E SOFFIT - SECTION A 4
SCALE: 1 1/2" = 1'-0"



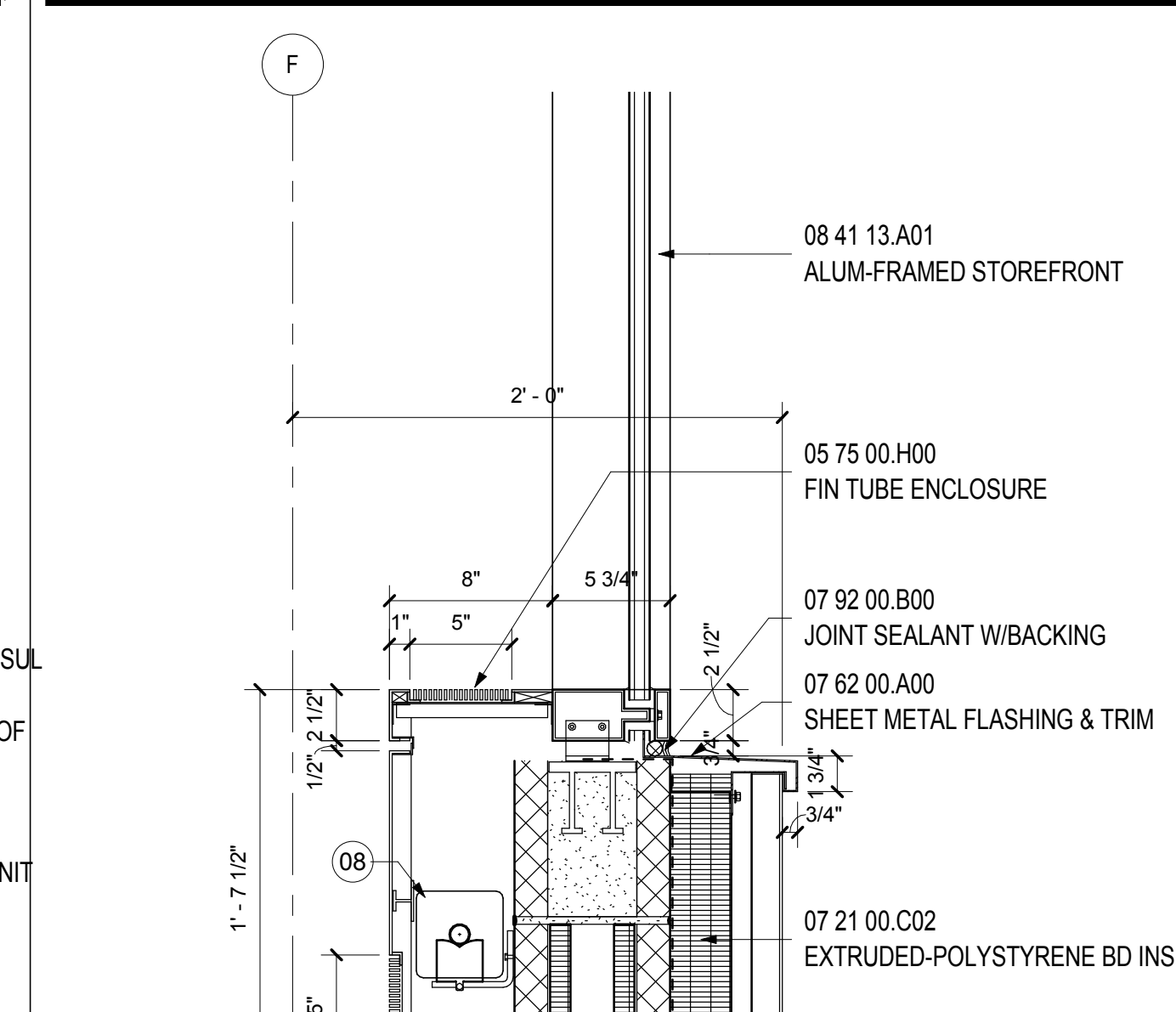
WALL TYPE E - SECTION @ LEVEL 3 5
SCALE: 1 1/2" = 1'-0"



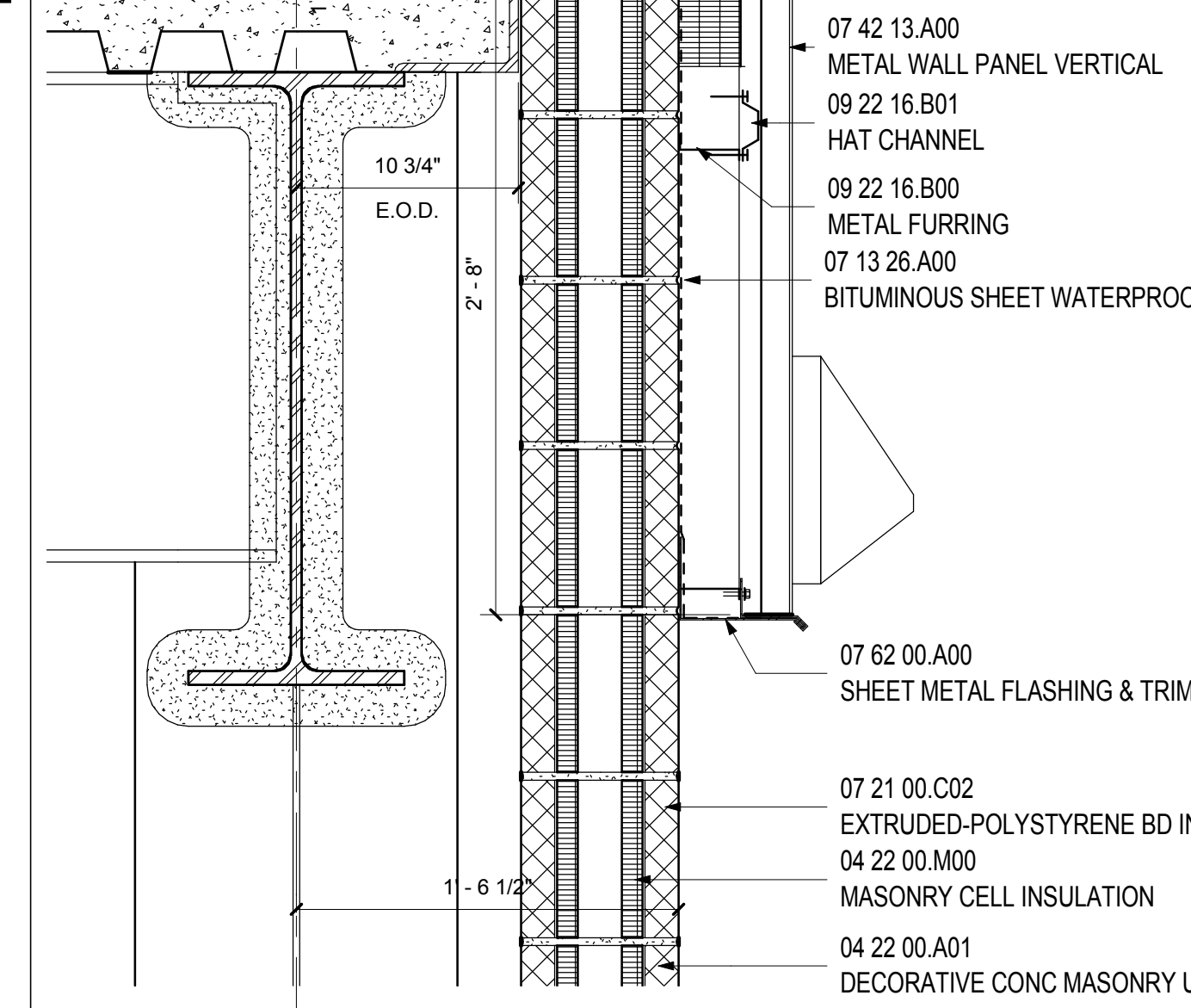
WALL TYPE E CMU 6
SCALE: 1 1/2" = 1'-0"



WALL TYPE E PARAPET 1
SCALE: 1 1/2" = 1'-0"



WALL TYPE E SILL - SECTION A 2
SCALE: 1 1/2" = 1'-0"



WALL TYPE E SILL - SECTION B 3
SCALE: 1 1/2" = 1'-0"

- SHEET NOTES**
- TAPE BITUMINOUS SHEET WATERPROOFING TO CURTAIN WALL FOR CONTINUOUS WATER/VAPOR/AIR BARRIER.
 - COORDINATE REQUIRED INSTALLATION CLEARANCES WITH REVOLVING DOOR MANUFACTURER.
 - PERFORATED PVC DRAIN PIPE. RE: CIVIL & STRUCTURAL DRAWINGS.
 - DRAINAGE BOARD. RE: CIVIL & STRUCTURAL DRAWINGS.
 - PROVIDE 2" RIGID INSULATION UNDER ALL SLABS ON GRADE.
 - PERIMETER DRAIN PIPE. RE: CIVIL & STRUCTURAL DRAWINGS.
 - PROVIDE VAPOR BARRIER UNDER ALL SLABS ON GRADE. RE: STRUCTURAL DRAWINGS FOR MORE INFORMATION.
 - FIN TUBE. RE: MECHANICAL DRAWINGS FOR MORE INFORMATION.
 - WRAP TPO MEMBRANE ROOFING OVER BLOCKING UNDER COPING.
 - WEATHERPROOF TOP COVER BELOW CURBSIDE CANOPY ENGINEERED TO SUPPORT SNOW LOAD AT DOOR 1510A ONLY. PROVIDE 1/2" STANDARD DUST COVERS AT DOORS 1510C AND 1510E.
 - ALUMINUM DOOR CLADDED WITH METAL PANEL TO MATCH ADJACENT.
 - GROUT SOLID.
 - BACKER ROD AND SEALANT.
 - REFER TO ELEVATIONS AND SECTIONS FOR DATUMS.
 - SEE STRUCTURAL DRAWING FOR LINTEL INFORMATION.
 - REFER TO WALL TYPE.
 - LINE OF ADJACENT PARTITION WHERE OCCURS.
 - LINE OF DOOR FRAME ABOVE.
 - COORDINATE CMU HEIGHT AT OPENING WITH LINTEL. REFER TO STRUCTURAL DRAWINGS.
 - COORDINATE CMU HEIGHT AT OPENING WITH LINTEL. REFER TO STRUCTURAL DRAWINGS.
 - VERIFY OPENING, CLEARANCE BELOW STRUCTURE WITH COILING DOOR HOUSING.
 - VERIFY AND COORDINATE DOOR SIZE AND REQUIRED CLEARANCES WITH DOOR WIDTH PRIOR TO INSTALLATION OF LINTEL.
 - PROVIDE 3" FACTORY STEEL JAMB WITH WITH 1" OVERLAP.
 - LINE OF LINTEL ABOVE.
 - LINE OF LOADING DOCK LEVELER.
 - SCHEDULED DOOR. REFER TO DOOR SCHEDULE FOR INFORMATION.

Portland International Jetport
1001 Westbrook Street
Portland, Maine 04102

Gensler
2020 K Street, Northwest
Suite 200
Washington DC 20006
Telephone 202.721.5200
Facsimile 202.872.8587

Issue	Date & Issue Description	By	Check
01	12/01/09		
02	01/23/09		
03	10/26/09		

Seal/Signature

Project Name
PWM Terminal Enhancement

Project Number
09 6395 000

Description
SECTION DETAILS - WALL TYPE E

Scale
As indicated

A12.14

© 2009 Gensler