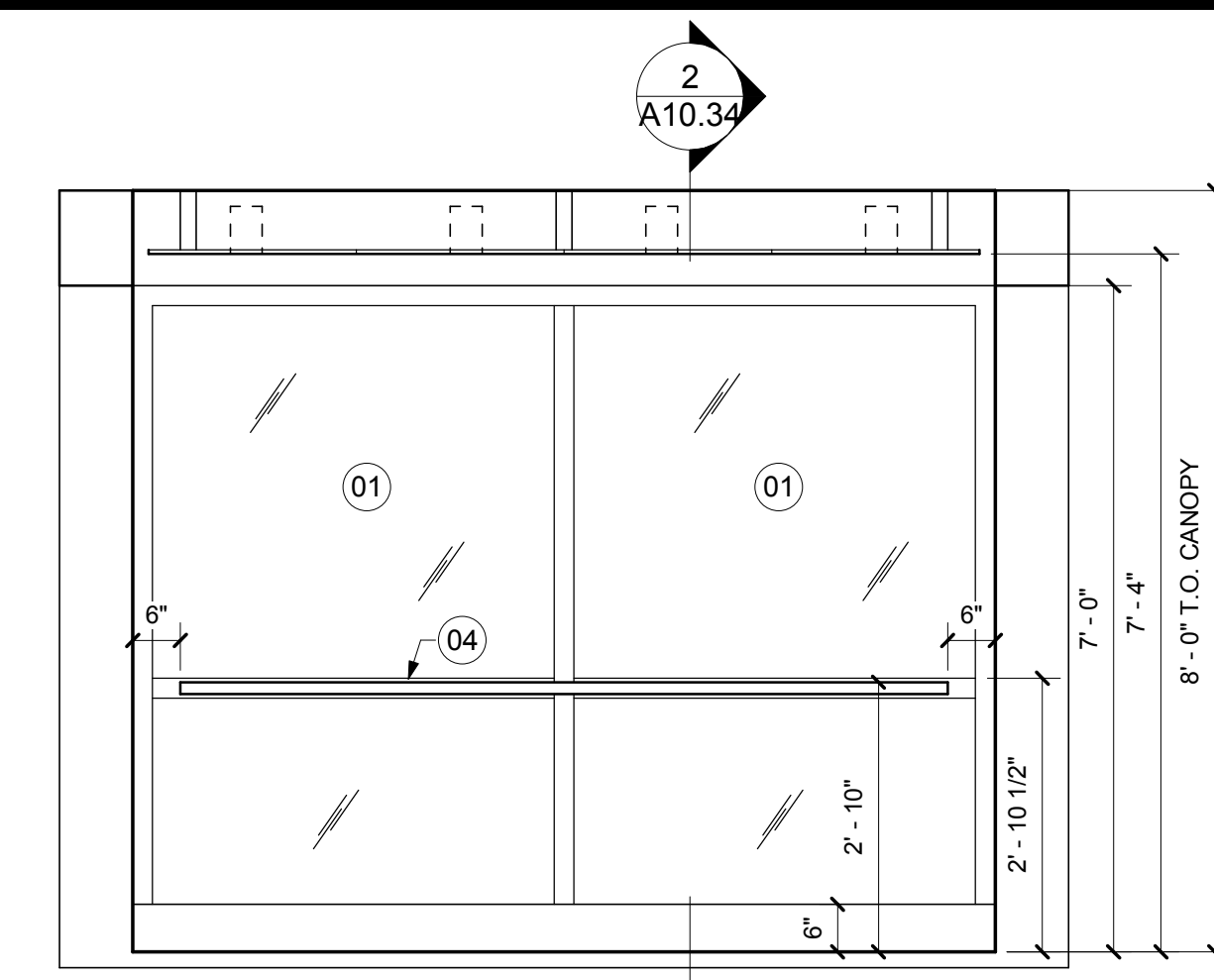
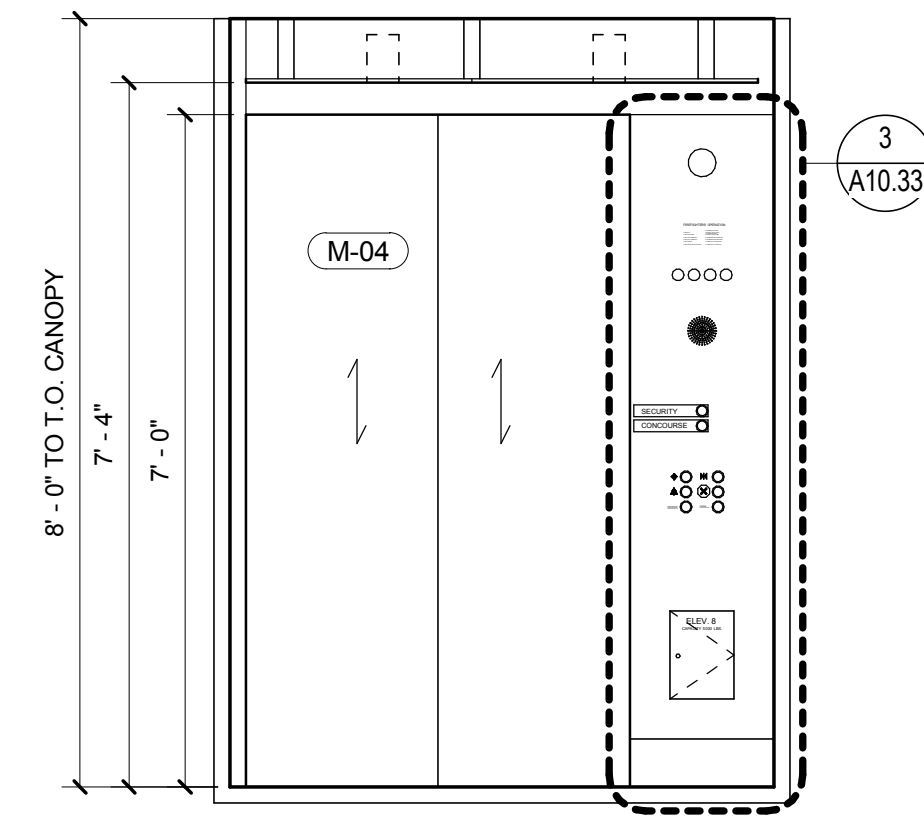


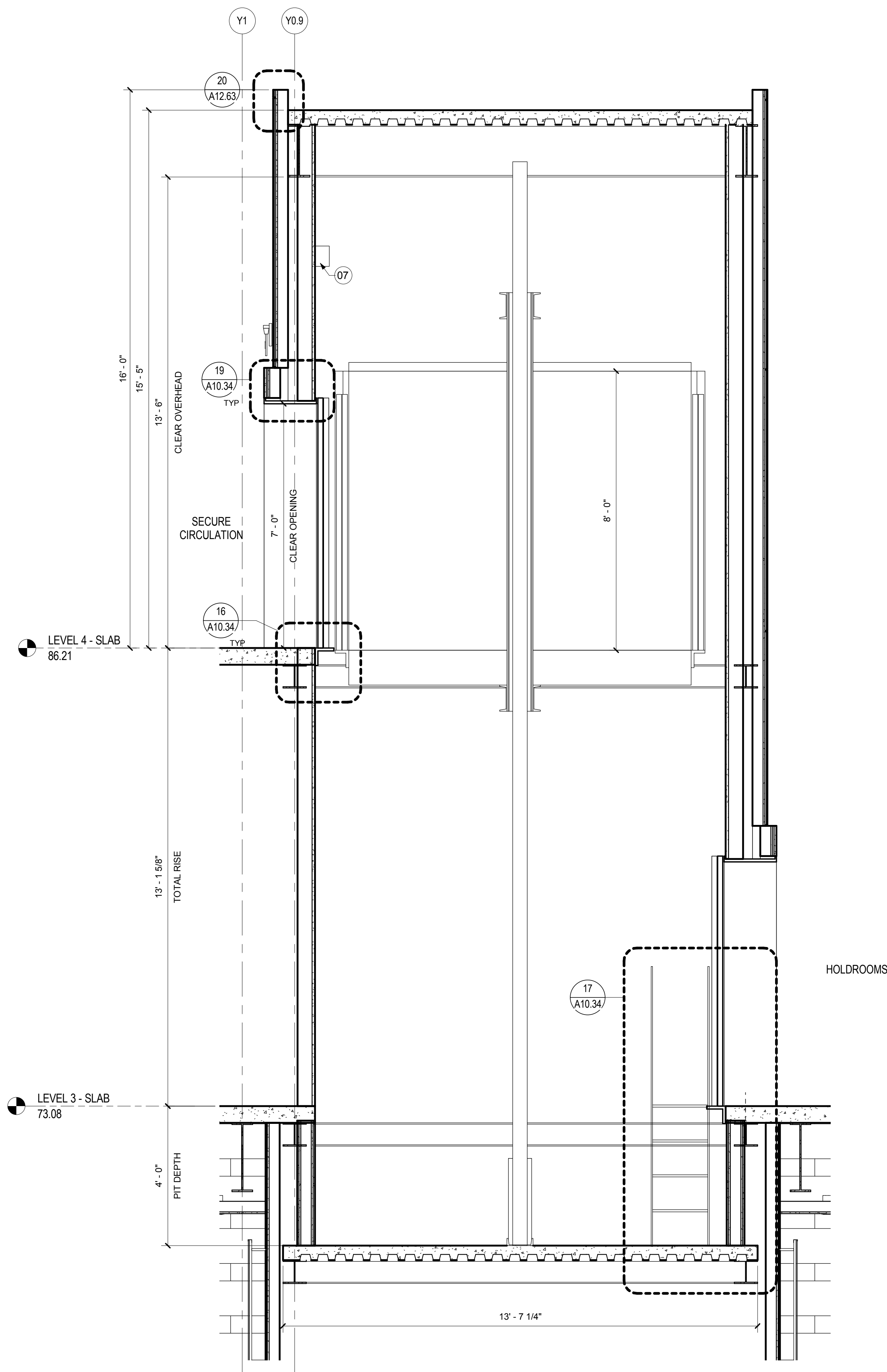
ELEV 6 & 7 - SIDE ELEVATION METAL
SCALE: 1/2" = 1'-0" A10.31



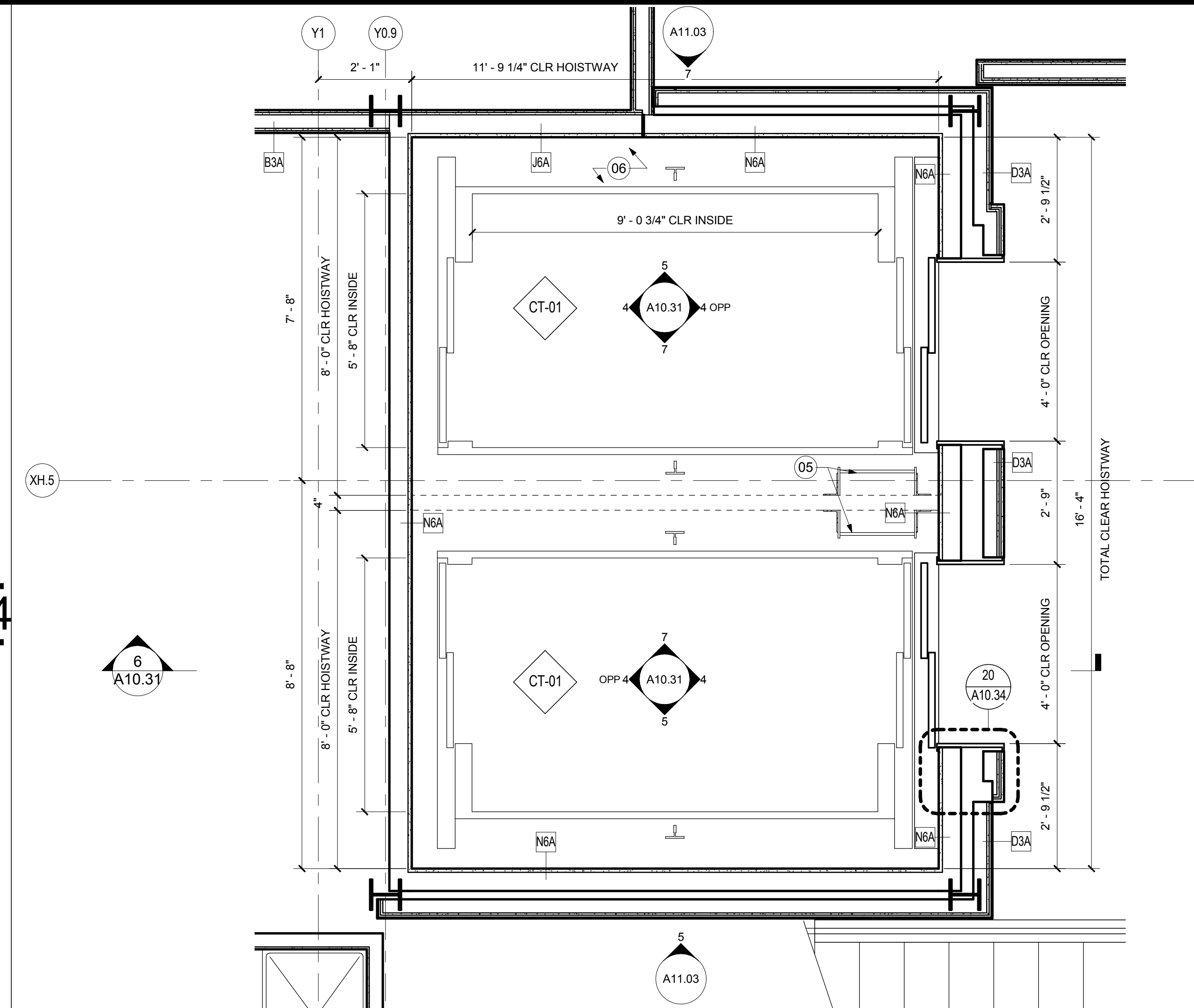
ELEV 6 & 7 - SIDE ELEVATION GLASS
SCALE: 1/2" = 1'-0" A10.30



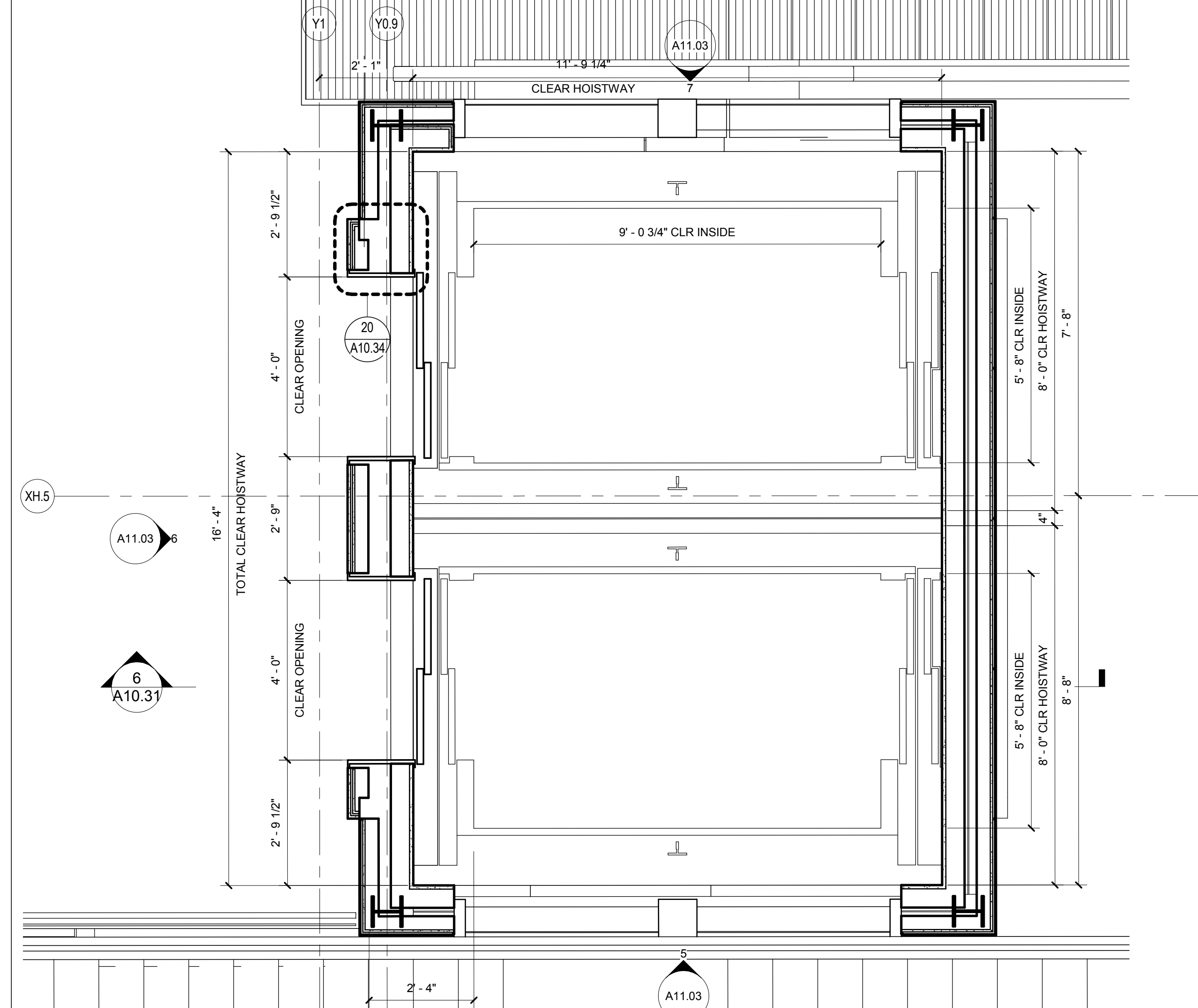
ELEV 6 & 7 - FRONT/REAR ELEVATION
SCALE: 1/2" = 1'-0" A10.30



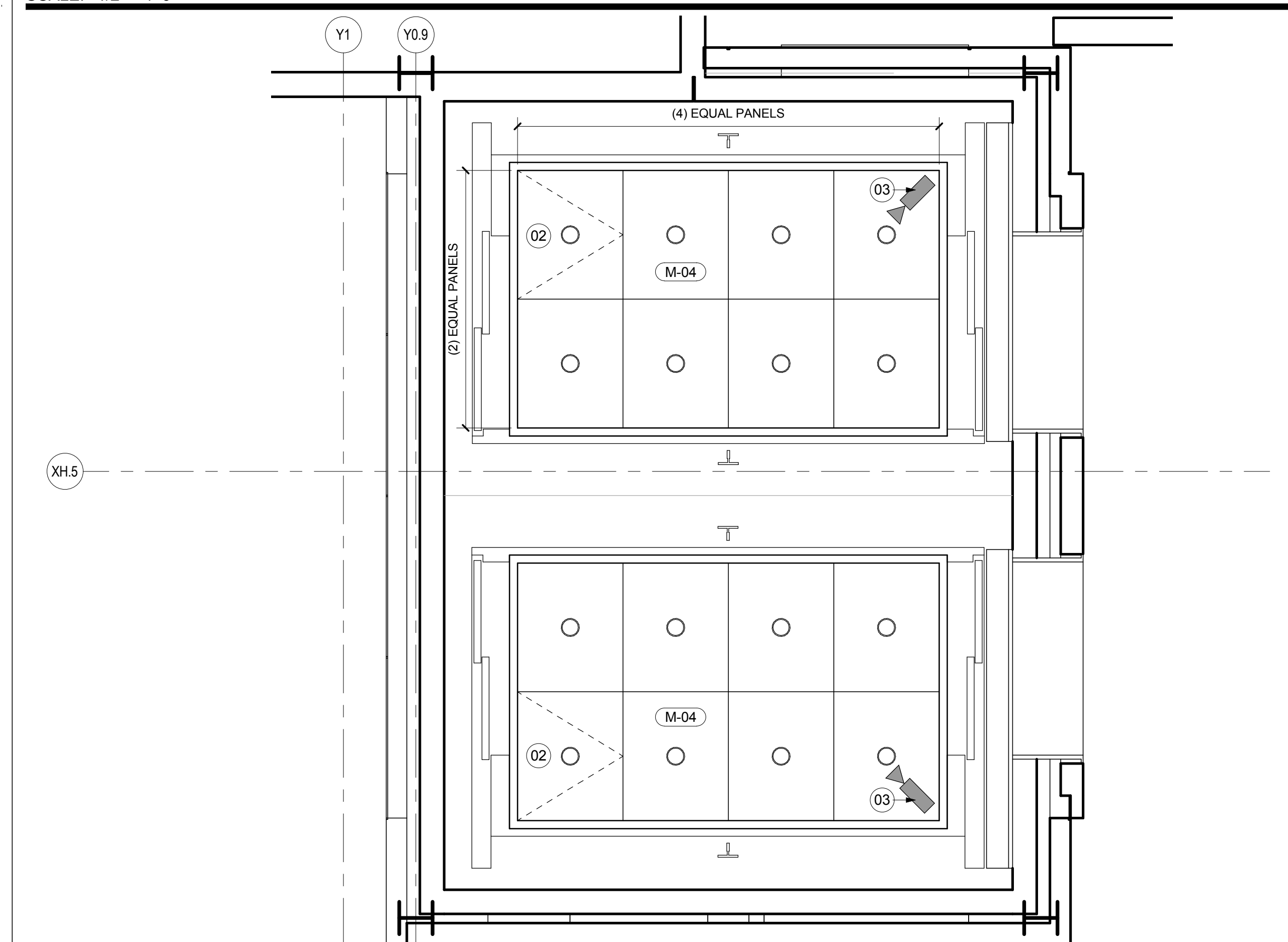
ELEVATORS 6 & 7 - SECTION
SCALE: 1/2" = 1'-0" A10.31



ELEVATORS 6 & 7 - PLAN LEVEL 3
SCALE: 1/2" = 1'-0" A02.03.02



ELEVATORS 6 & 7 - PLAN LEVEL 4
SCALE: 1/2" = 1'-0" A02.04.06



ELEVATORS 6 & 7 RCP
SCALE: 1/2" = 1'-0" A04.03.05

SHEET NOTES

- 01 SIDE WALLS OF ELEVATOR CAB IS CLEAR GLASS. COORDINATE WITH ELEVATOR MANUFACTURER.
- 02 EMERGENCY ACCESS PANEL
- 03 CCTV SECURITY CAMERA
- 04 1 1/2" DIAMETER STAINLESS STEEL HANDRAIL
- 05 PIT LADDER
- 06 ALL EXPOSED STEEL AND WALLS WITH IN SHAFT TO BE PAINTED. RE: FINISH PLAN FOR FINISH
- 07 HOISTWAY LIGHT FIXTURE WITH WIRE GUARD, MOUNTED PER ELEVATOR MANUFACTURERS REQUIREMENTS.
- 08 PROVIDED METAL OXIDE WATER PROOFING AND WATER STOPS IN AND AROUND PIT. RE: SECTION 07 16 19 IN THE PROJECT MANUAL FOR MORE INFORMATION.
- 09 LINE OF SILL BELOW
- 10 STRUCTURAL STEEL RE: STRUCTURAL DRAWINGS FOR ADDITIONAL INFORMATION
- 11 PROVIDE STAINLESS STEEL FASCIA TO COVER CAB EXTERIOR ON GLASS SIDE ONLY

GENERAL NOTES

- A. ALL PIT DIMENSIONS AND CAB SIZES TO BE COORDINATED WITH SELECTED MANUFACTURER UPON PROCUREMENT
- B. MANUFACTURER TO PROVIDE ALL ELEMENTS TO COMPLY WITH ALL GOVERNING CODES.
- C. GLASS SIDE WALL ELEVATORS TO BE PER ELEVATOR MANUFACTURERS DRAWINGS. ELEVATIONS AND DETAILS ARE FOR DESIGN INTENT ONLY.

Portland International Jetport
1001 Westbrook Street
Portland, Maine 04102

Gensler
2020 K Street, Northwest
Suite 200
Washington DC 20006
Telephone 202.721.5200
Facsimile 202.872.8587

Issue	Date & Issue Description	By	Check
01	08/22/08		
02	DESIGN DEVELOPMENT		
03	75% CONSTRUCTION DOCUMENTS		
04	95% CONSTRUCTION DOCUMENTS		
05	ISSUED FOR PERMIT		

Seal/Signature

 Project Name
 PWM Terminal Enhancement

Project Number
 09-6395-000
 Description
 VERTICAL CIRCULATION - ELEVATORS #6 & 7
 Scale
 As indicated

A10.31
 © 2009 Gensler