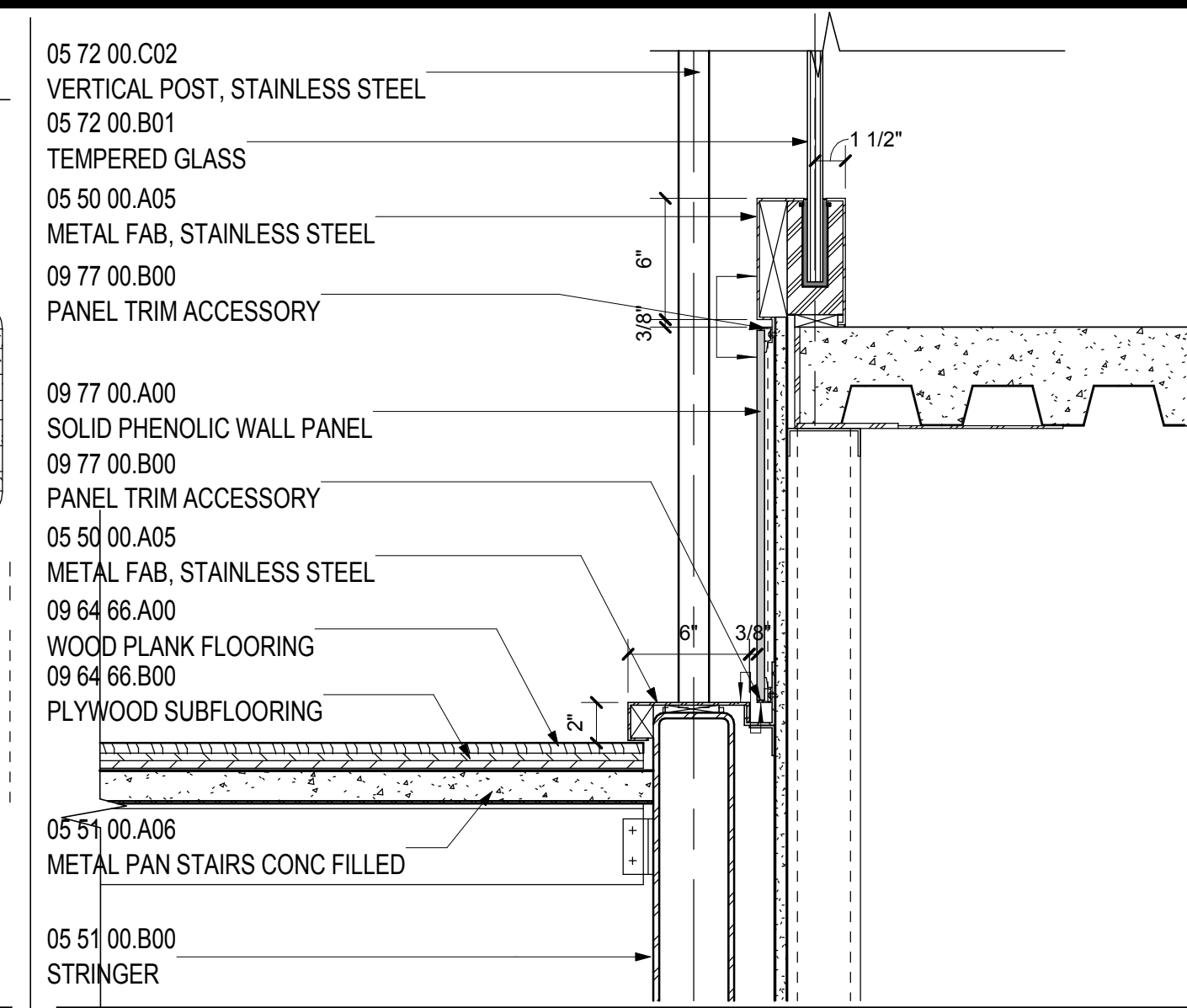
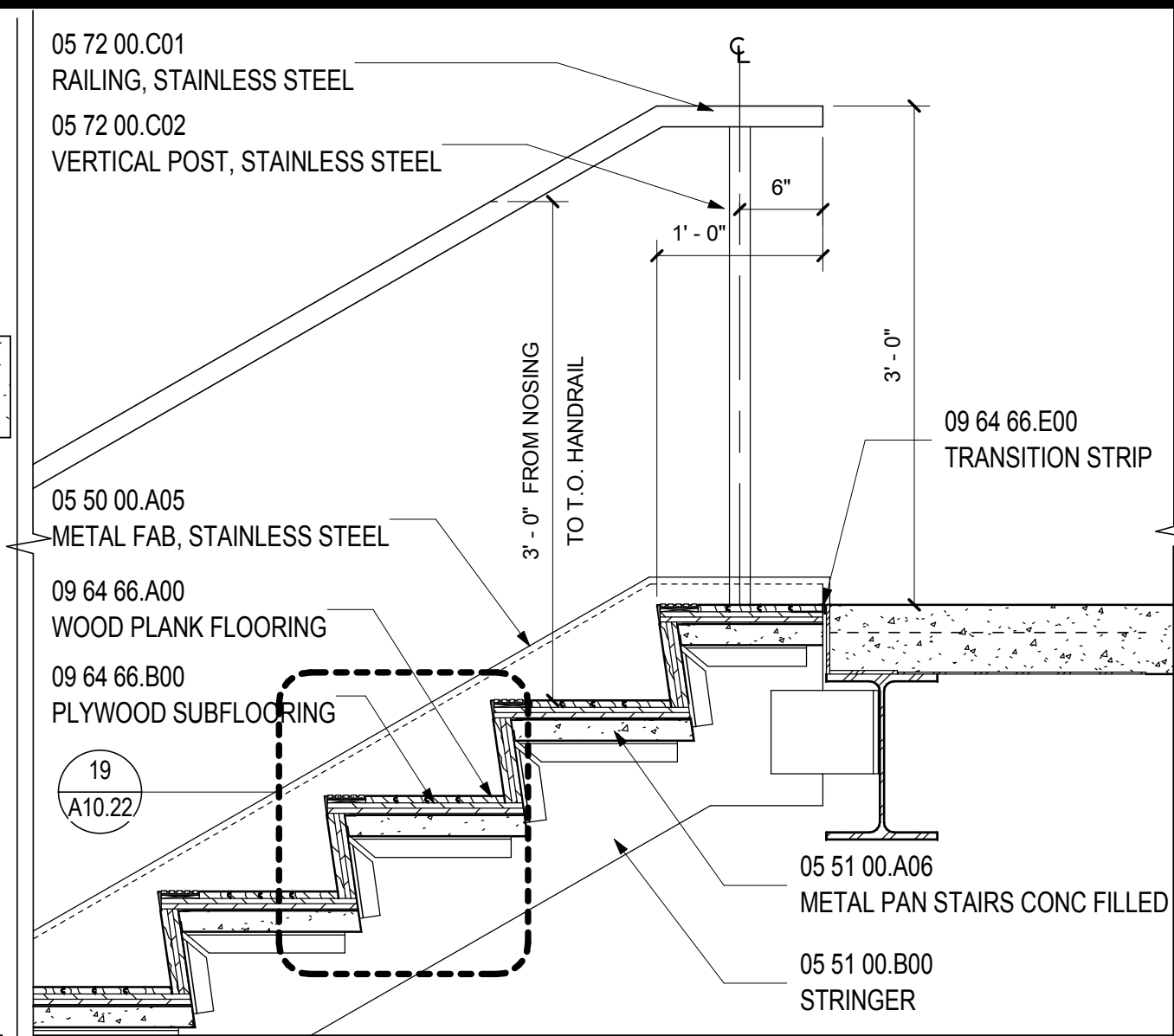


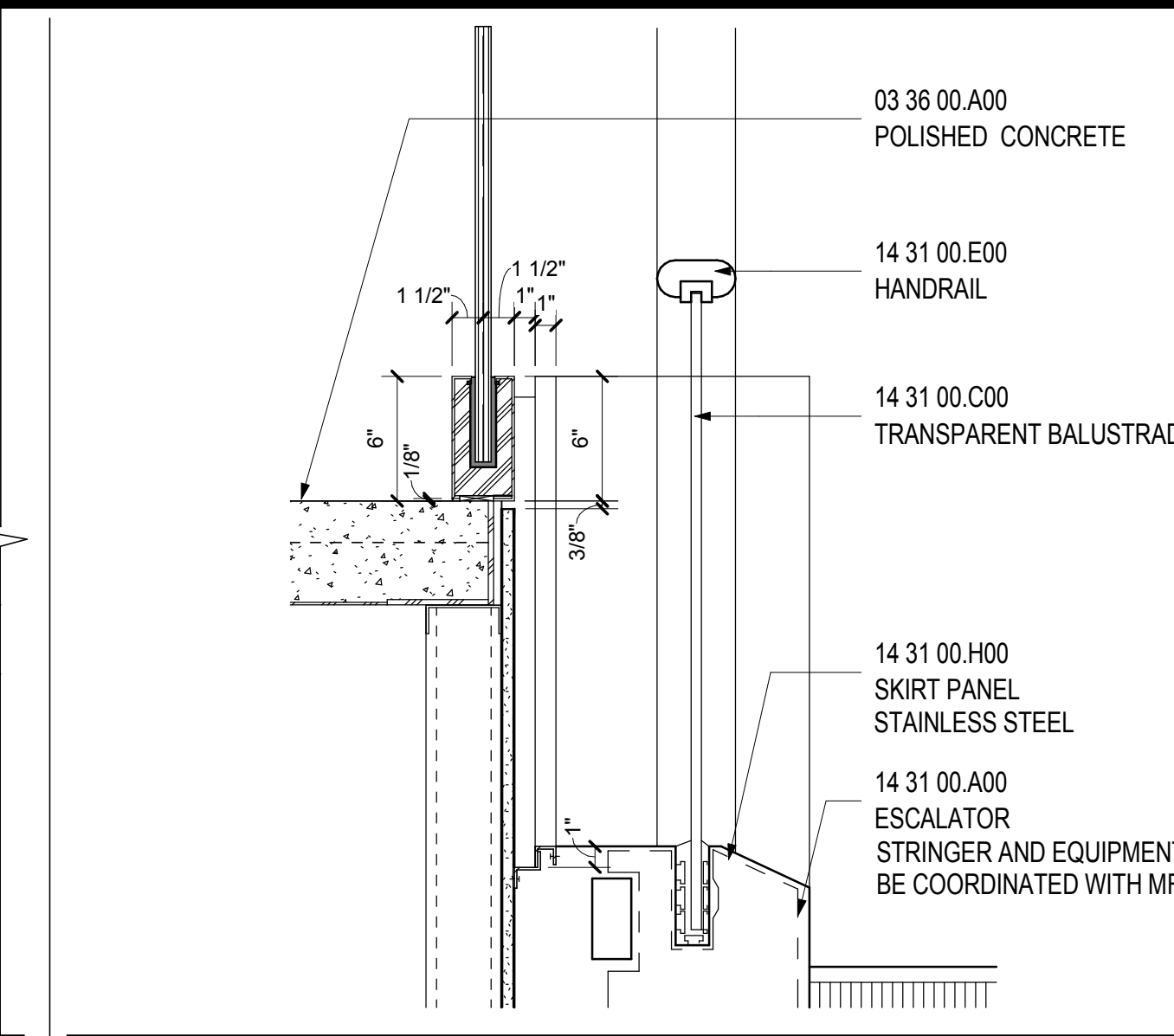
PLAN DETAIL @ STAIR #15 GUARDRAIL 20
SCALE: 1 1/2" = 1'-0" A10.21



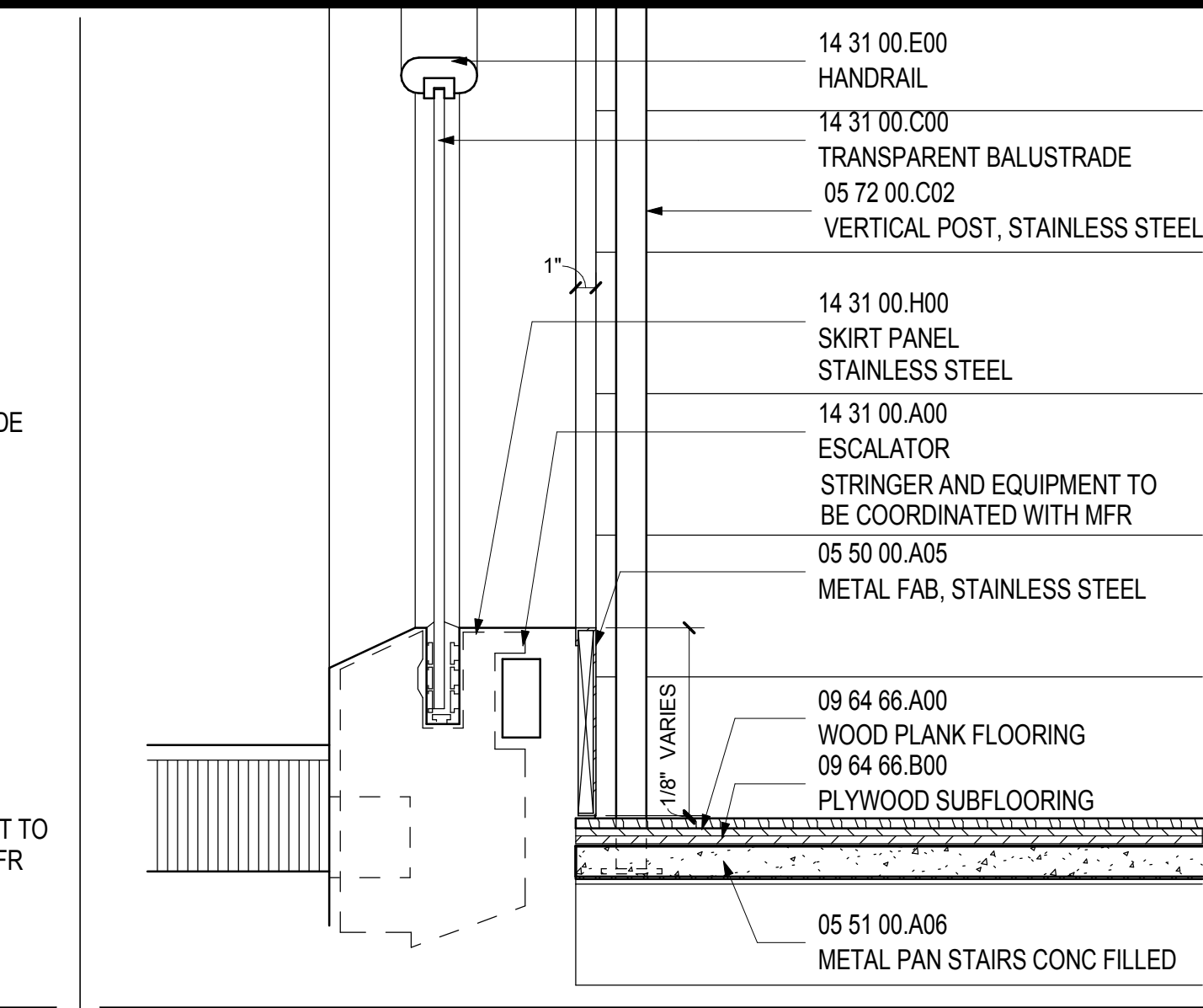
SECTION @ STAIR #15 @ GLASS/RAIL 15
SCALE: 1 1/2" = 1'-0" A10.21



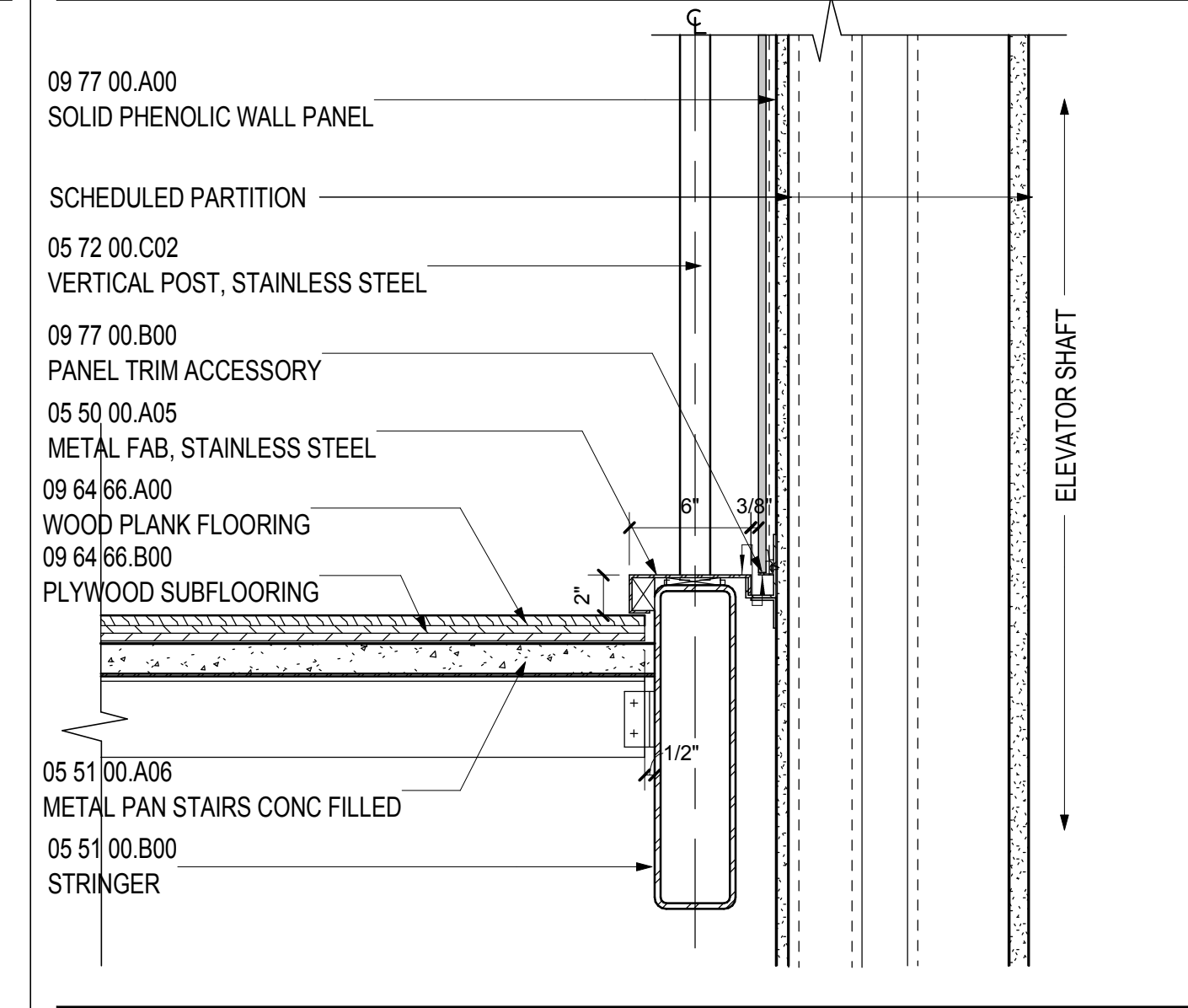
MONUMENTAL STAIR TOP LANDING 11
SCALE: 1" = 1'-0" A10.20



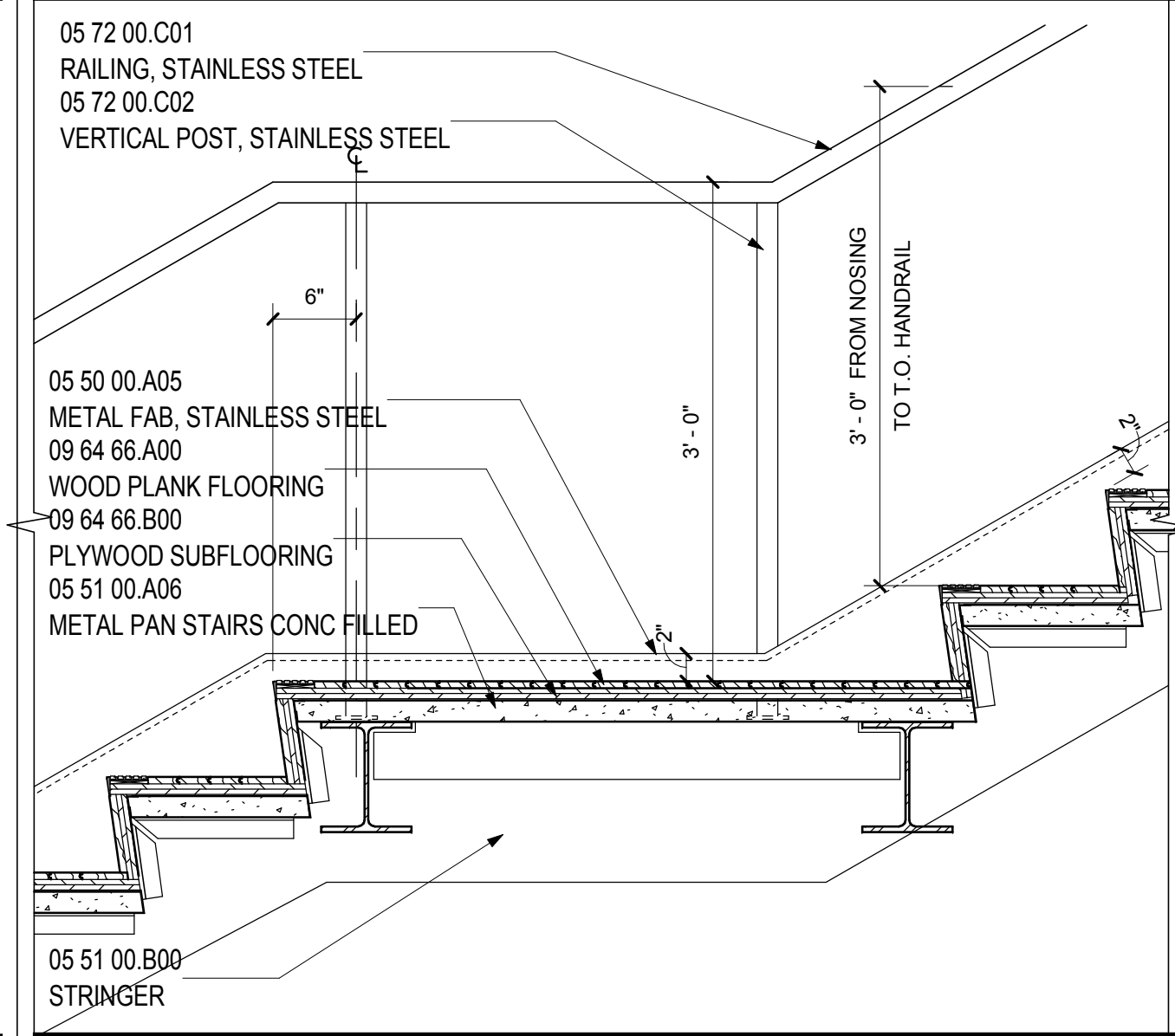
SECTION @ ESCL #3 & 4 RAIL 6
SCALE: 1 1/2" = 1'-0" A10.20



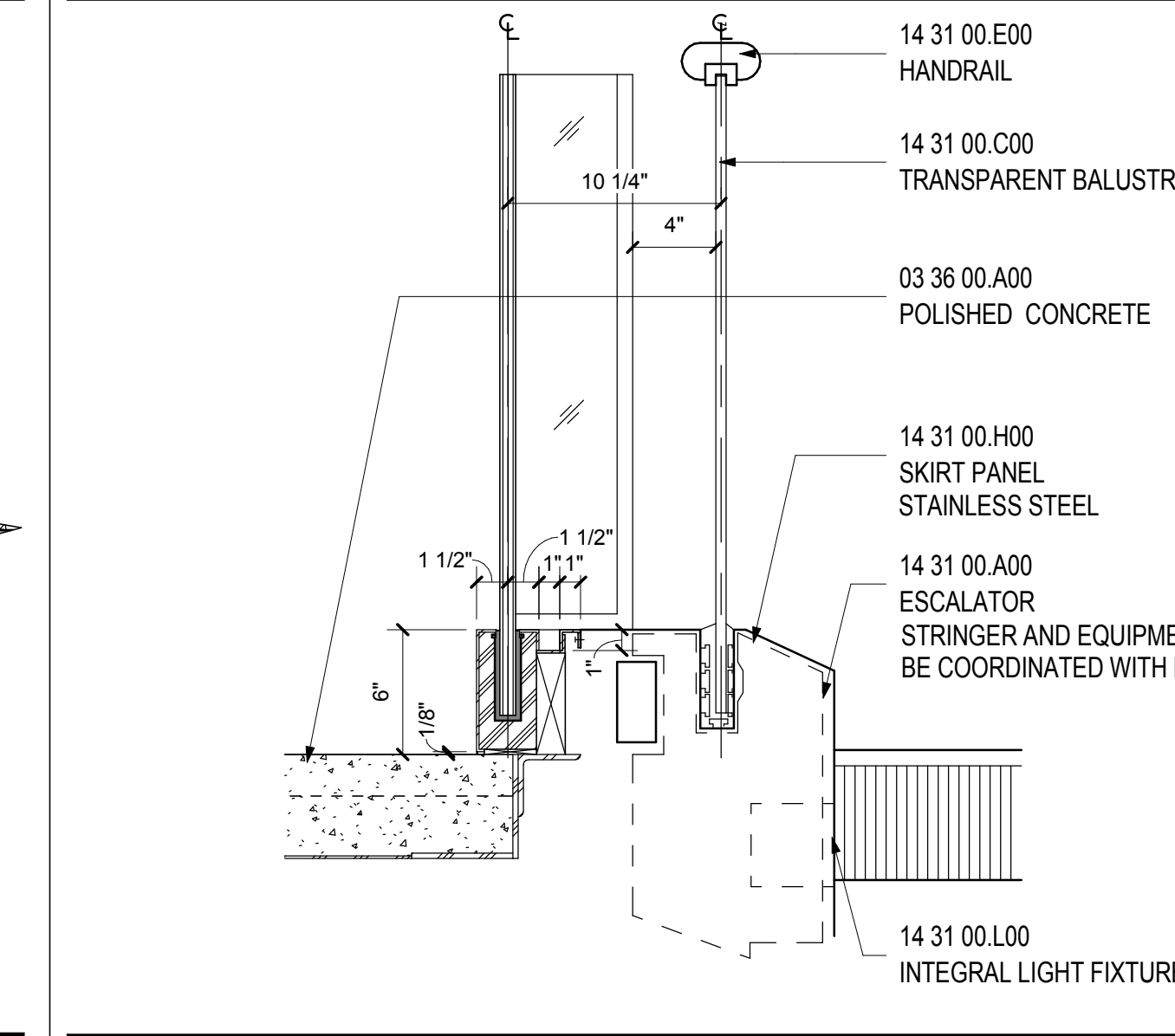
SECTION @ ESCL #3, 4 & 6 RAIL/STAIR 1
SCALE: 1 1/2" = 1'-0" A10.20



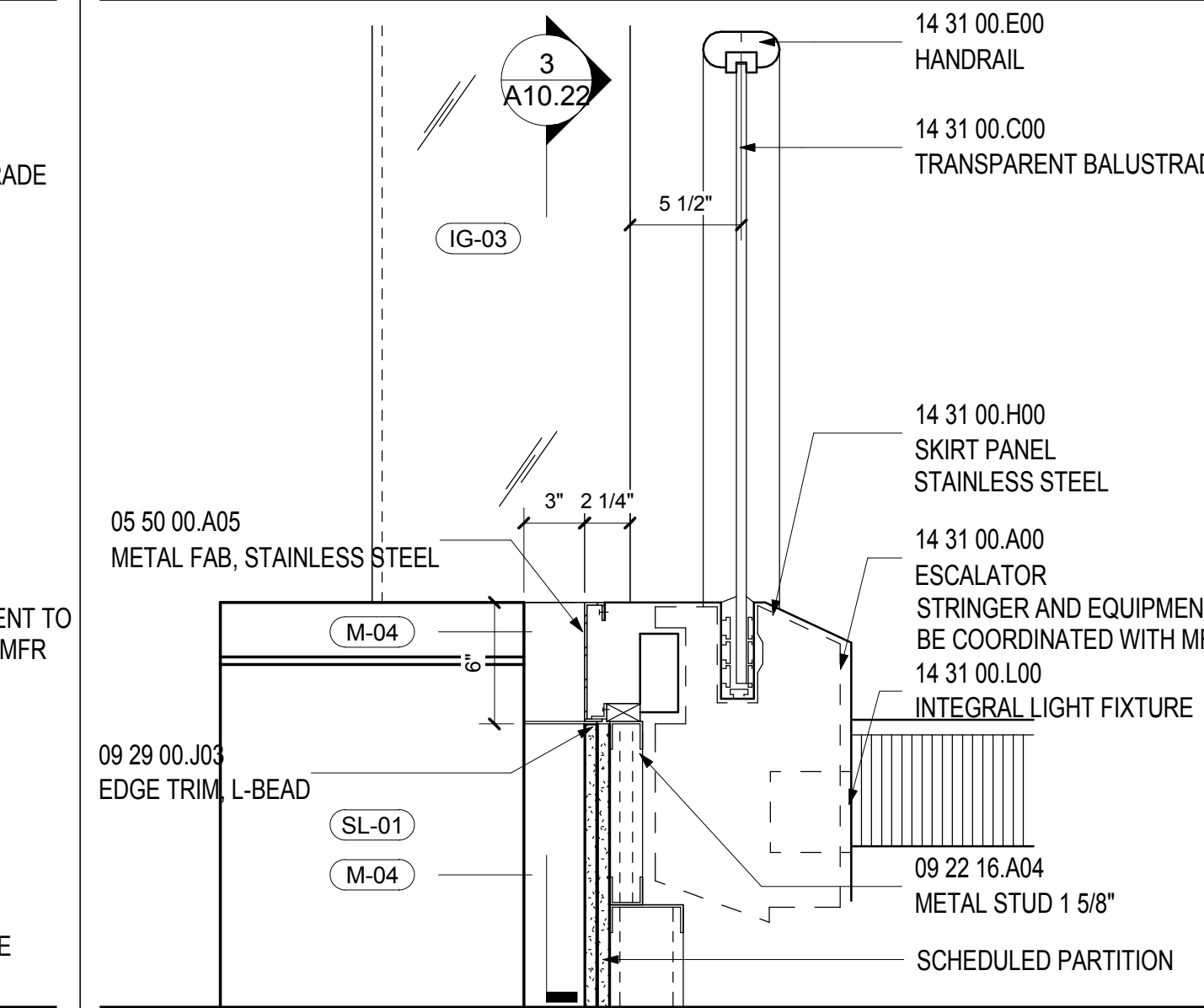
SECTION @ STAIR #15 @ GLASS 16
SCALE: 1 1/2" = 1'-0" A10.21



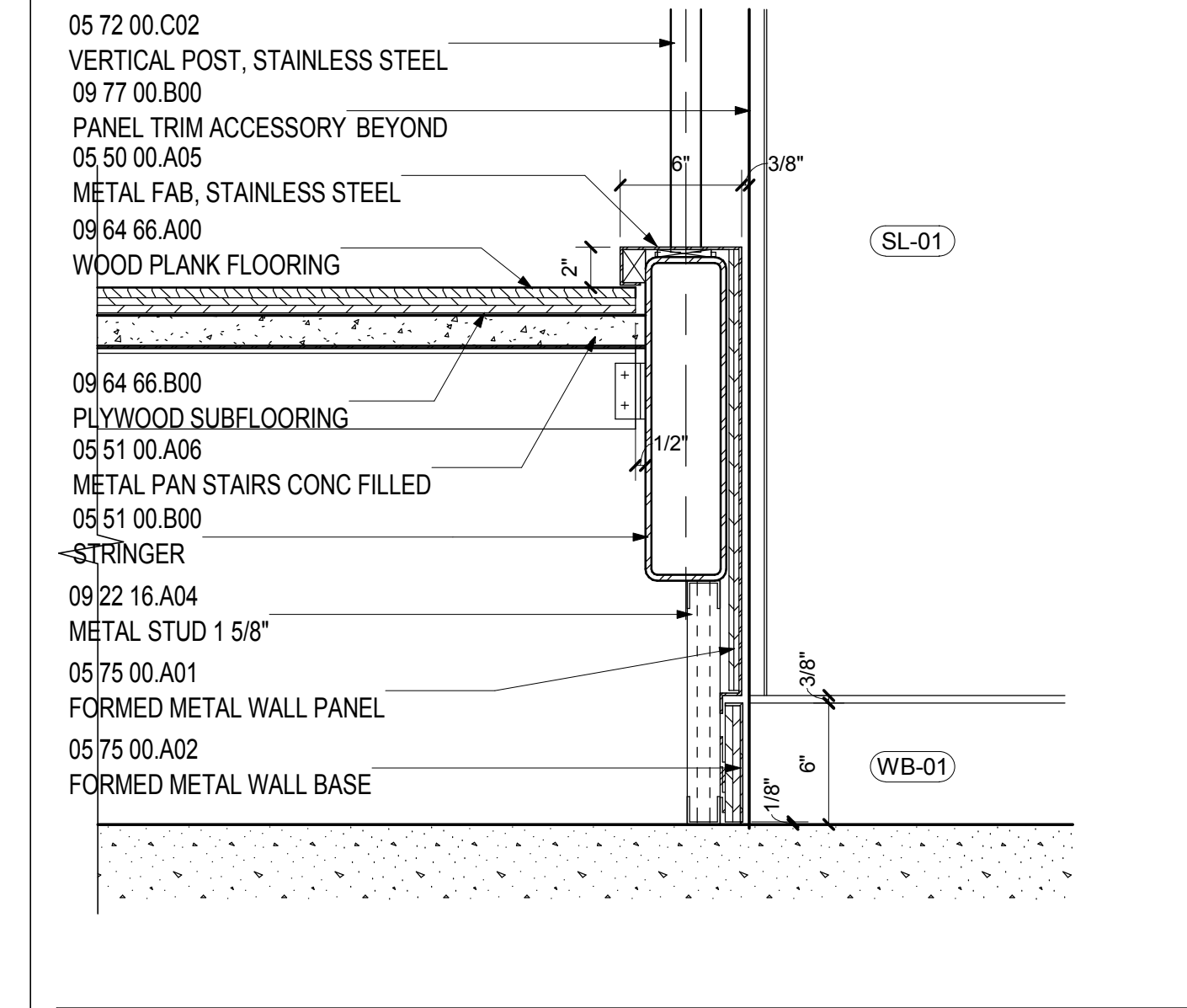
MONUMENTAL STAIR MID LANDING 12
SCALE: 1" = 1'-0" A10.20



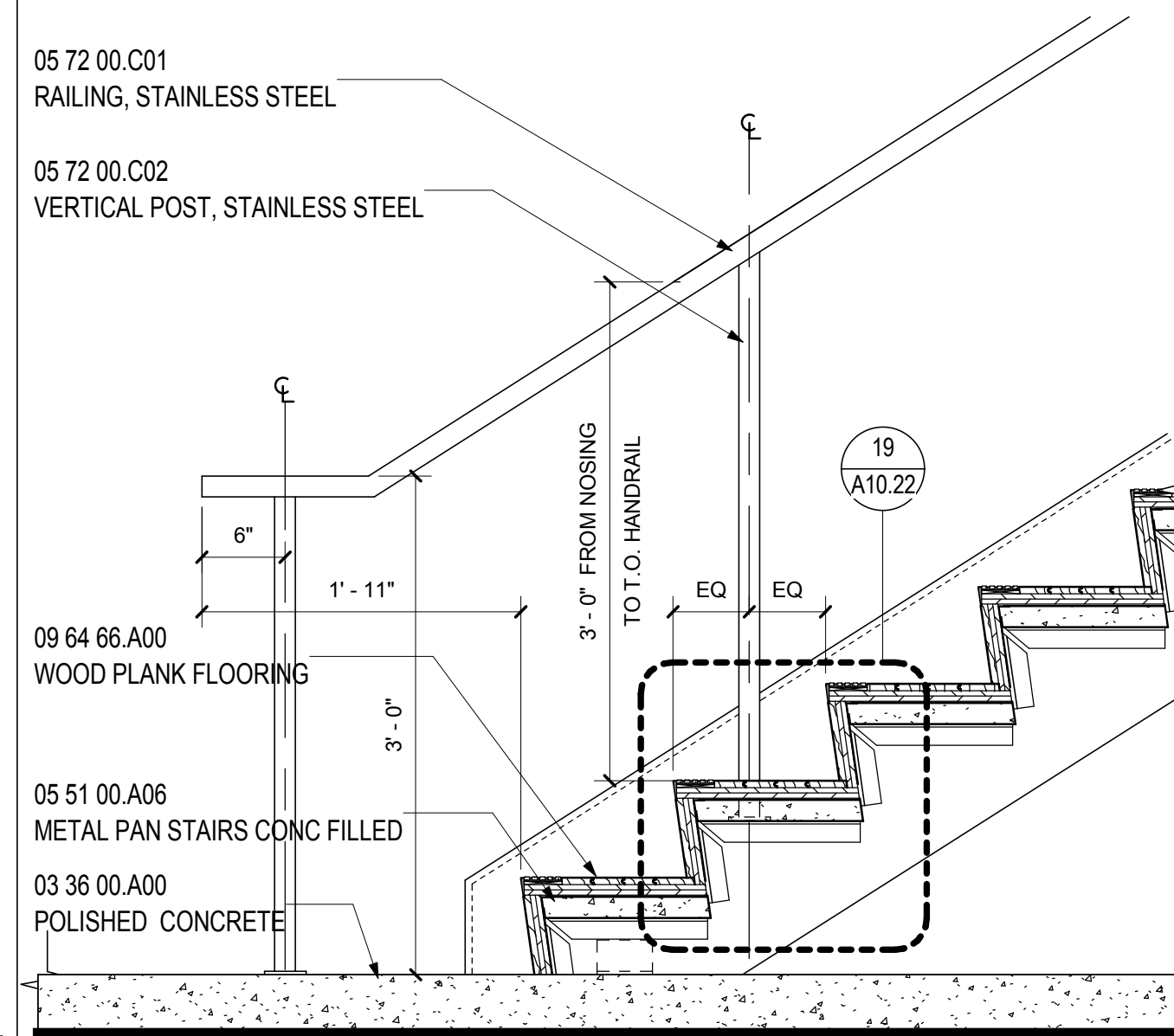
SECTION @ ESCL #3 & 4 RAIL/LANDING 7
SCALE: 1 1/2" = 1'-0" A10.20



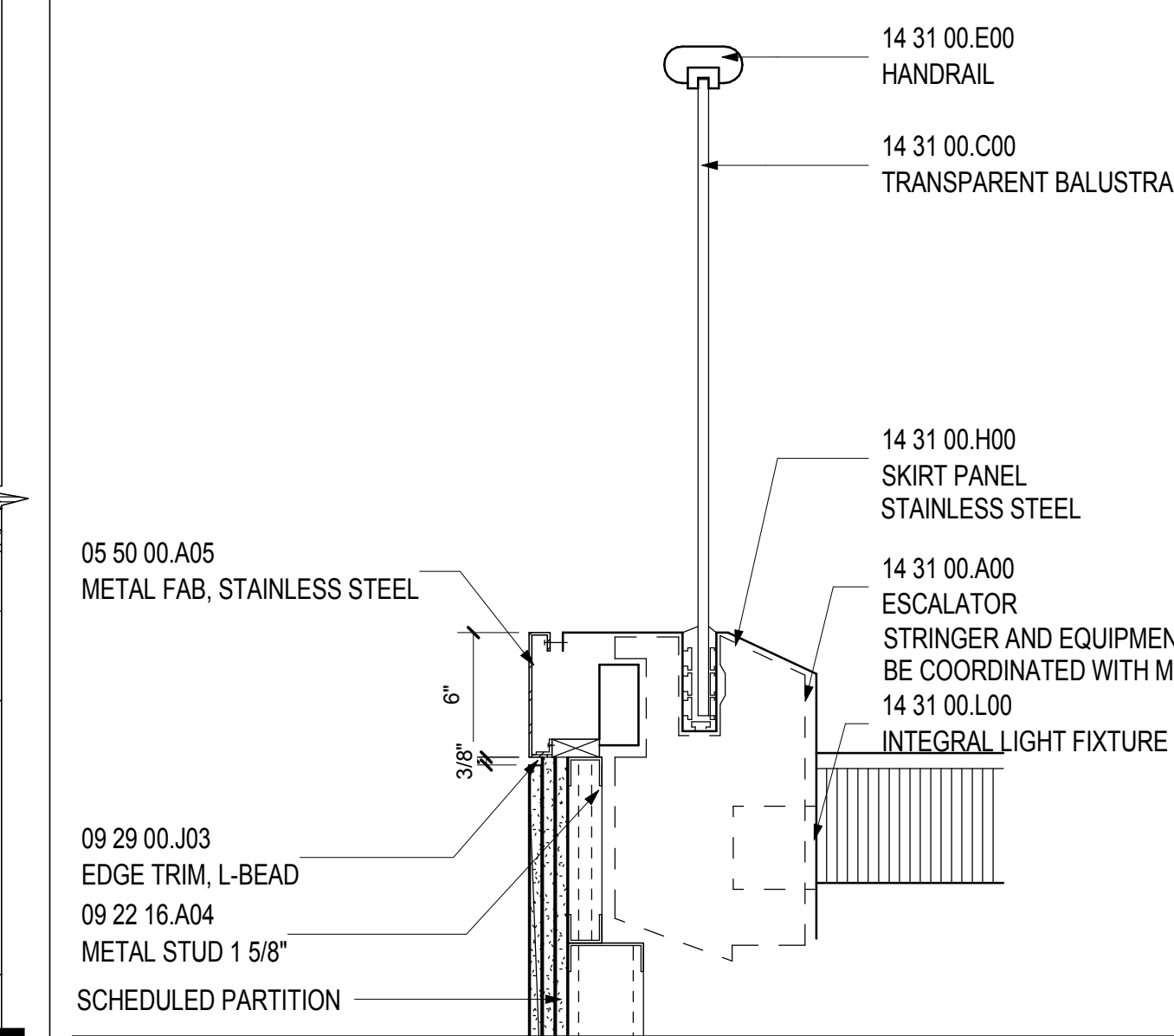
SECTION @ ESCL #6 RAIL/LANDING 2
SCALE: 1 1/2" = 1'-0" A10.21



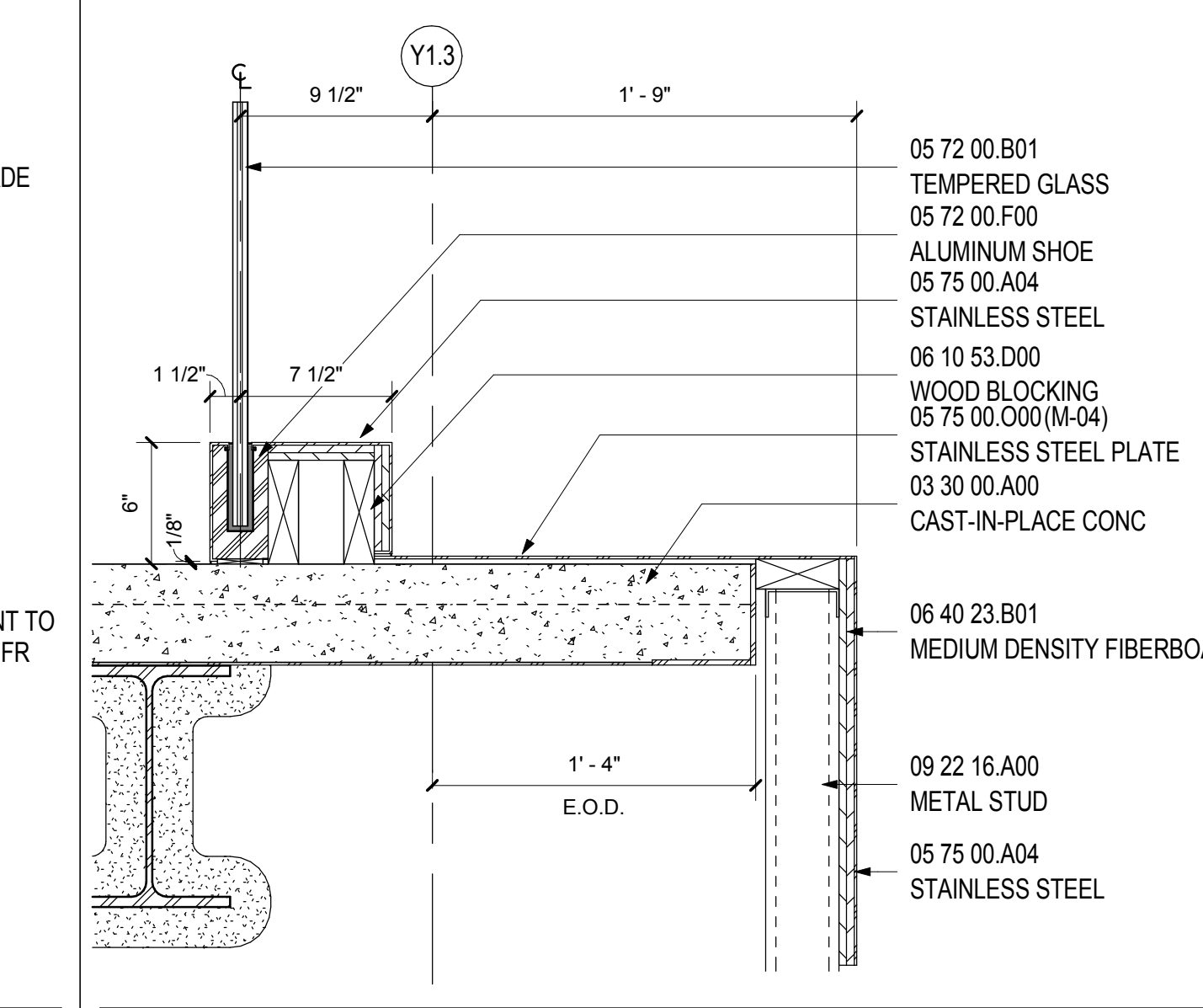
SECTION @ STAIR #15 SIDE 17
SCALE: 1 1/2" = 1'-0" A10.21



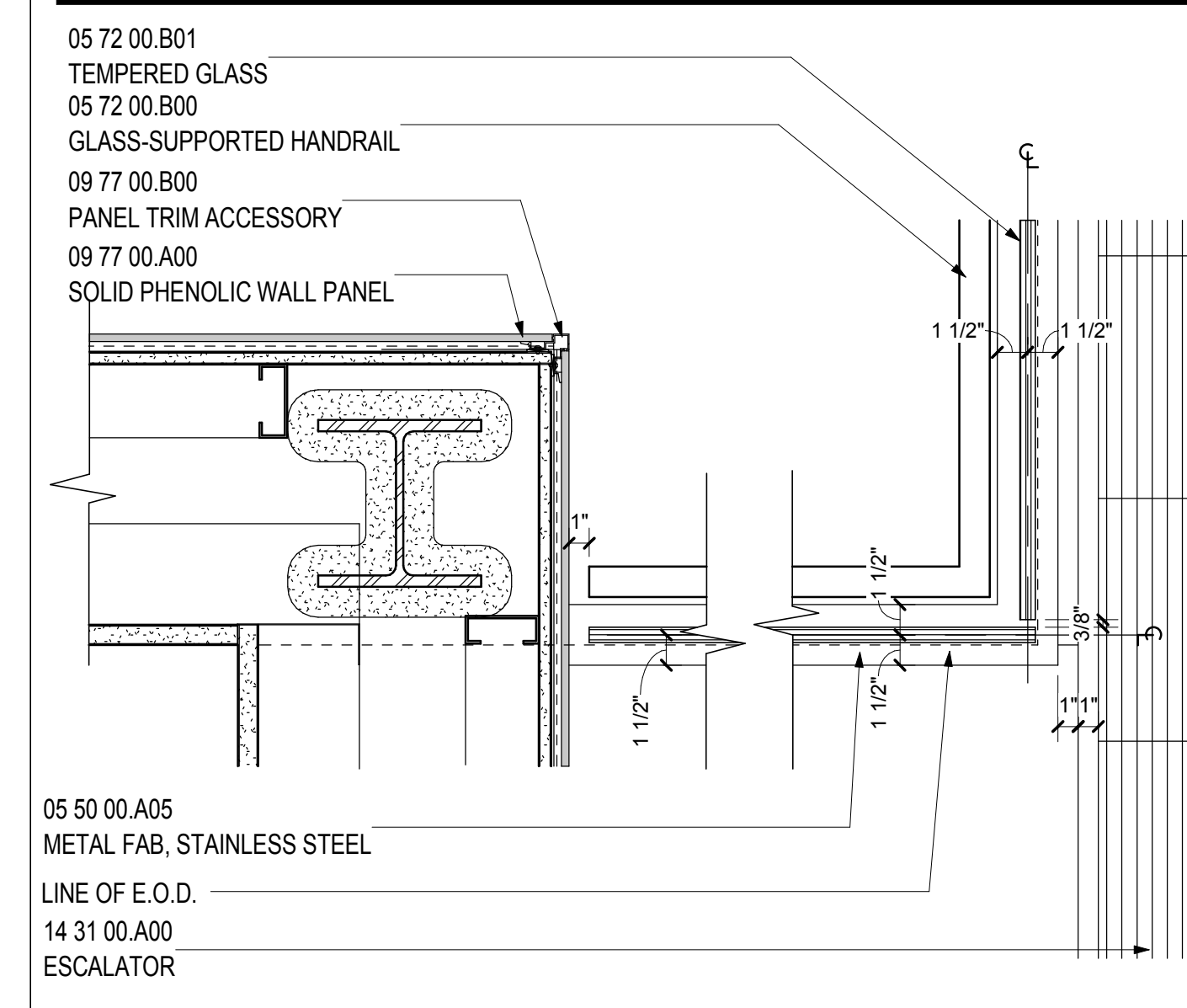
MONUMENTAL STAIR BOTTOM 13
SCALE: 1" = 1'-0" A10.20



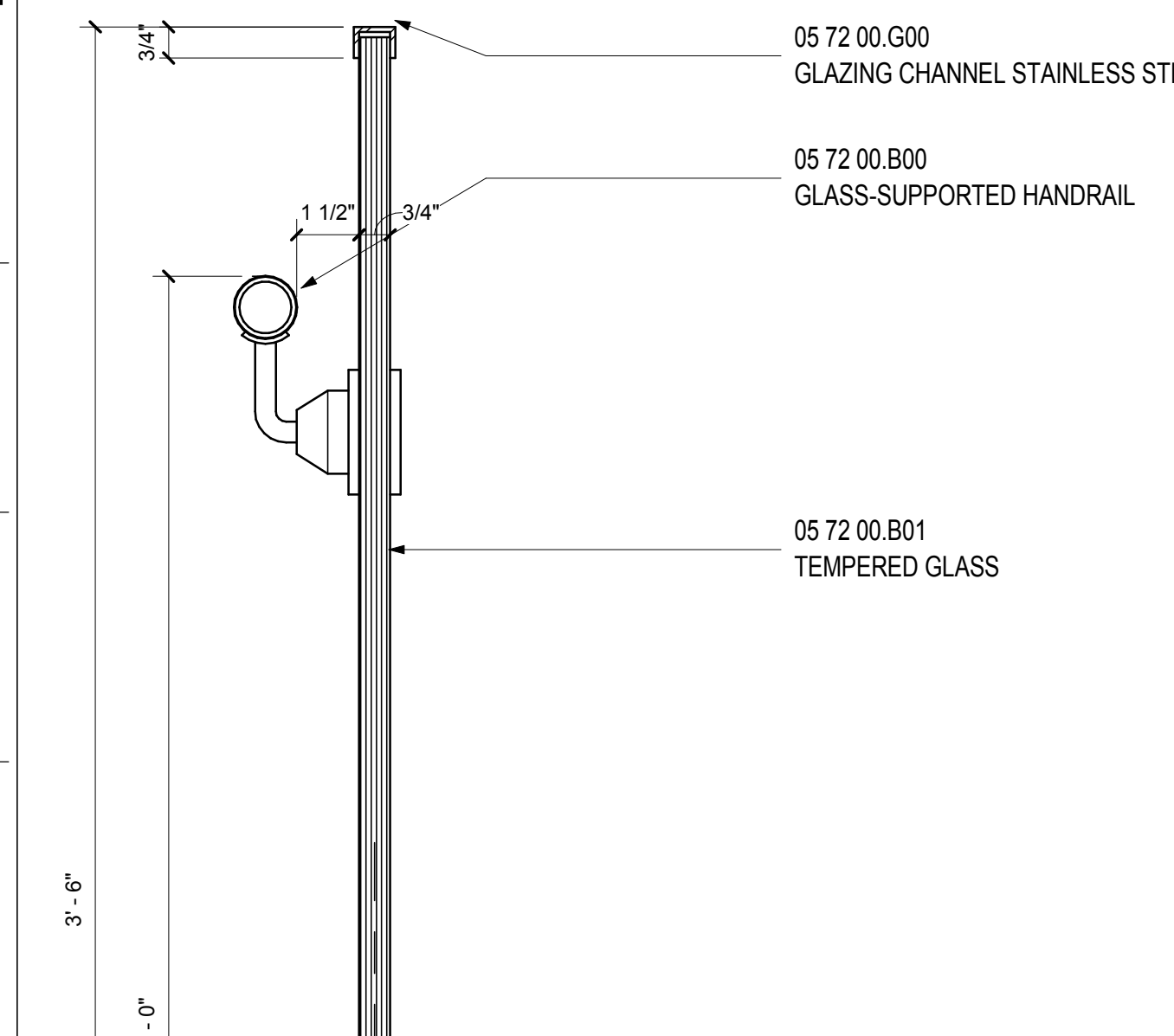
SECTION @ ESCL #3, 4 & 6 RAIL 8
SCALE: 1 1/2" = 1'-0" A10.20



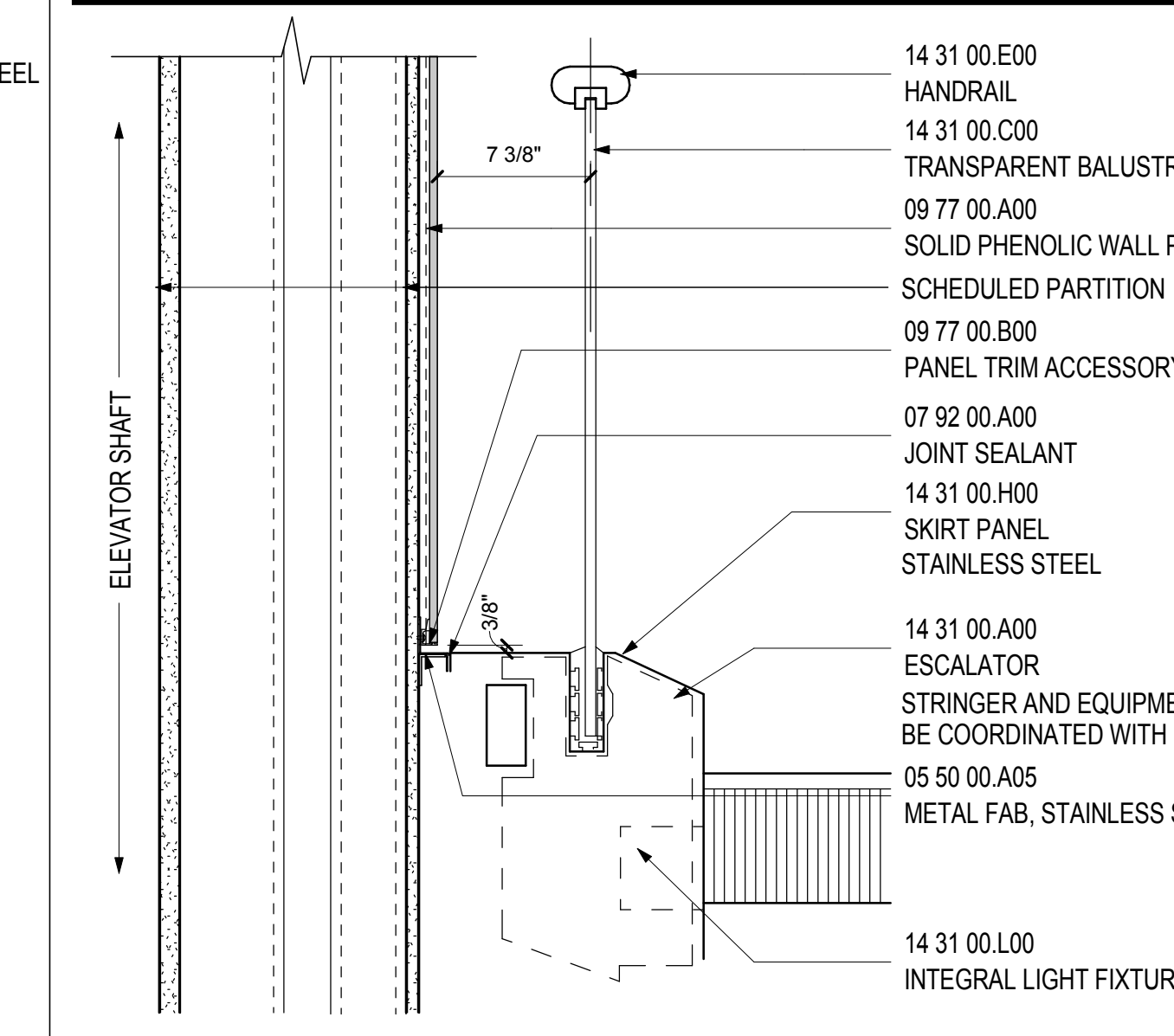
SECTION @ ESCL #6 REVEAL 3
SCALE: 1 1/2" = 1'-0" A10.21



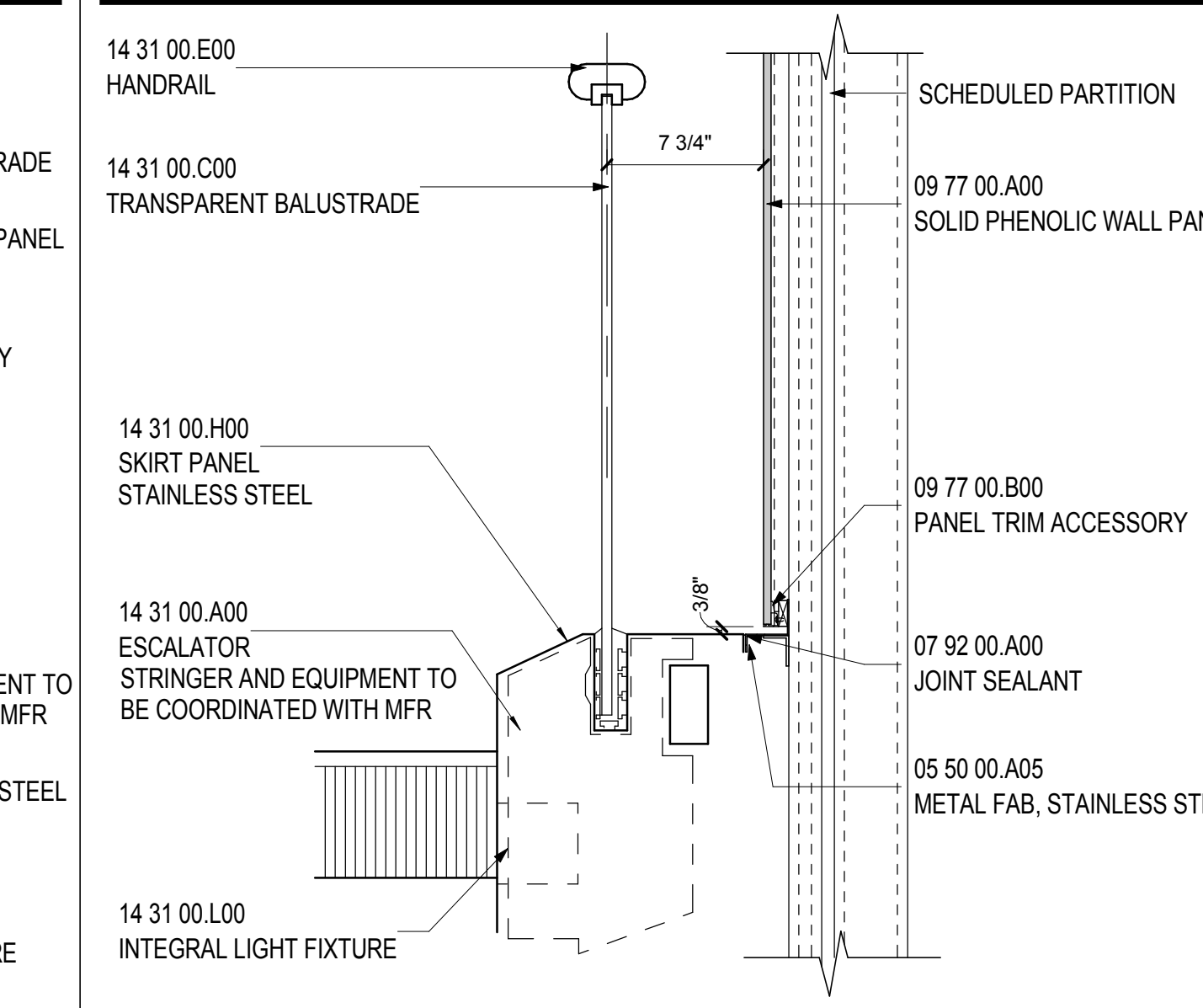
PLAN DETAIL @ GUARDRAIL 18
SCALE: 1 1/2" = 1'-0" A10.21



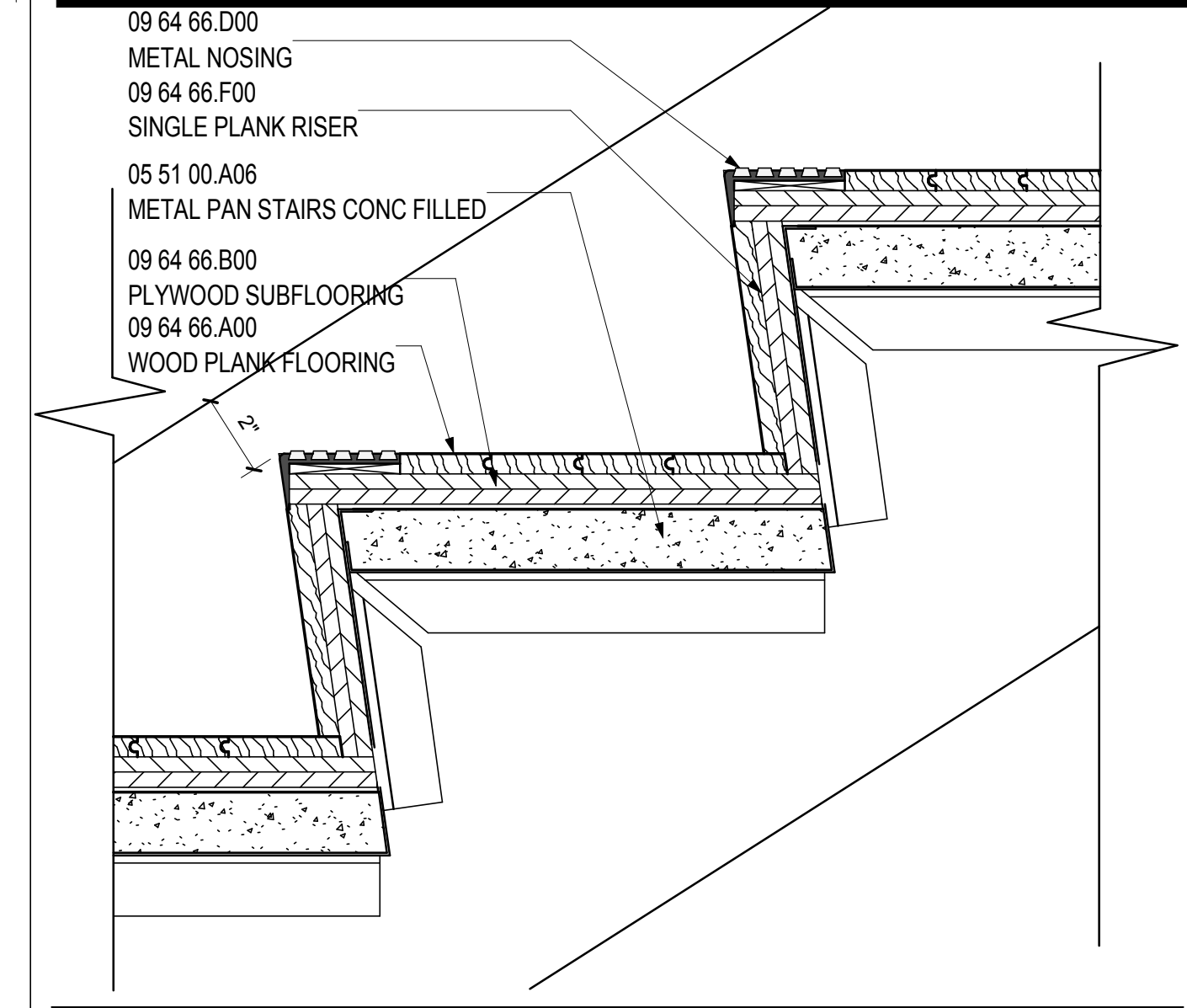
SECTION @ GLASS RAIL 14
SCALE: 3" = 1'-0" A11.10



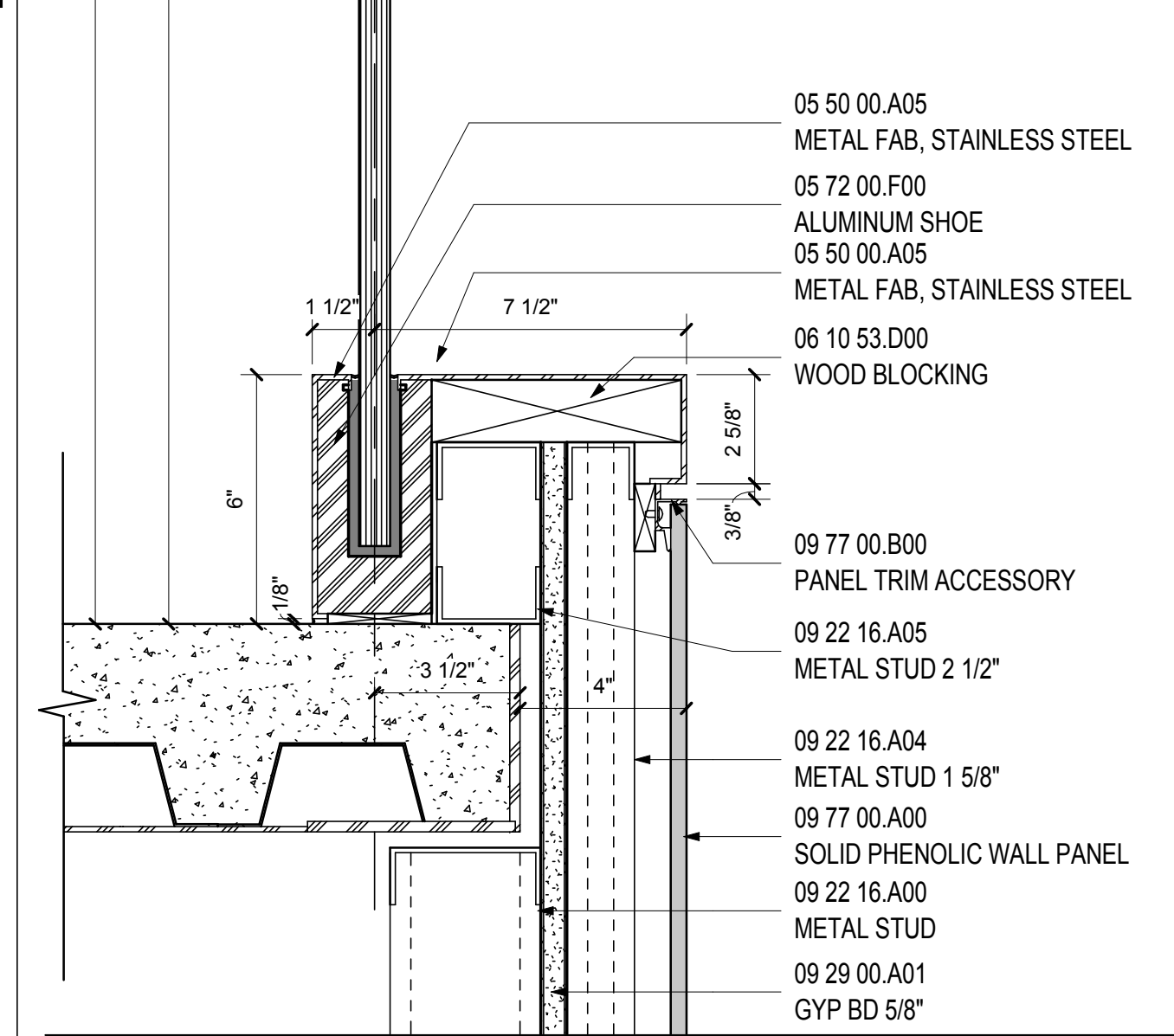
SECTION @ ESCL #5 RAIL/GLASS 9
SCALE: 1 1/2" = 1'-0" A10.21



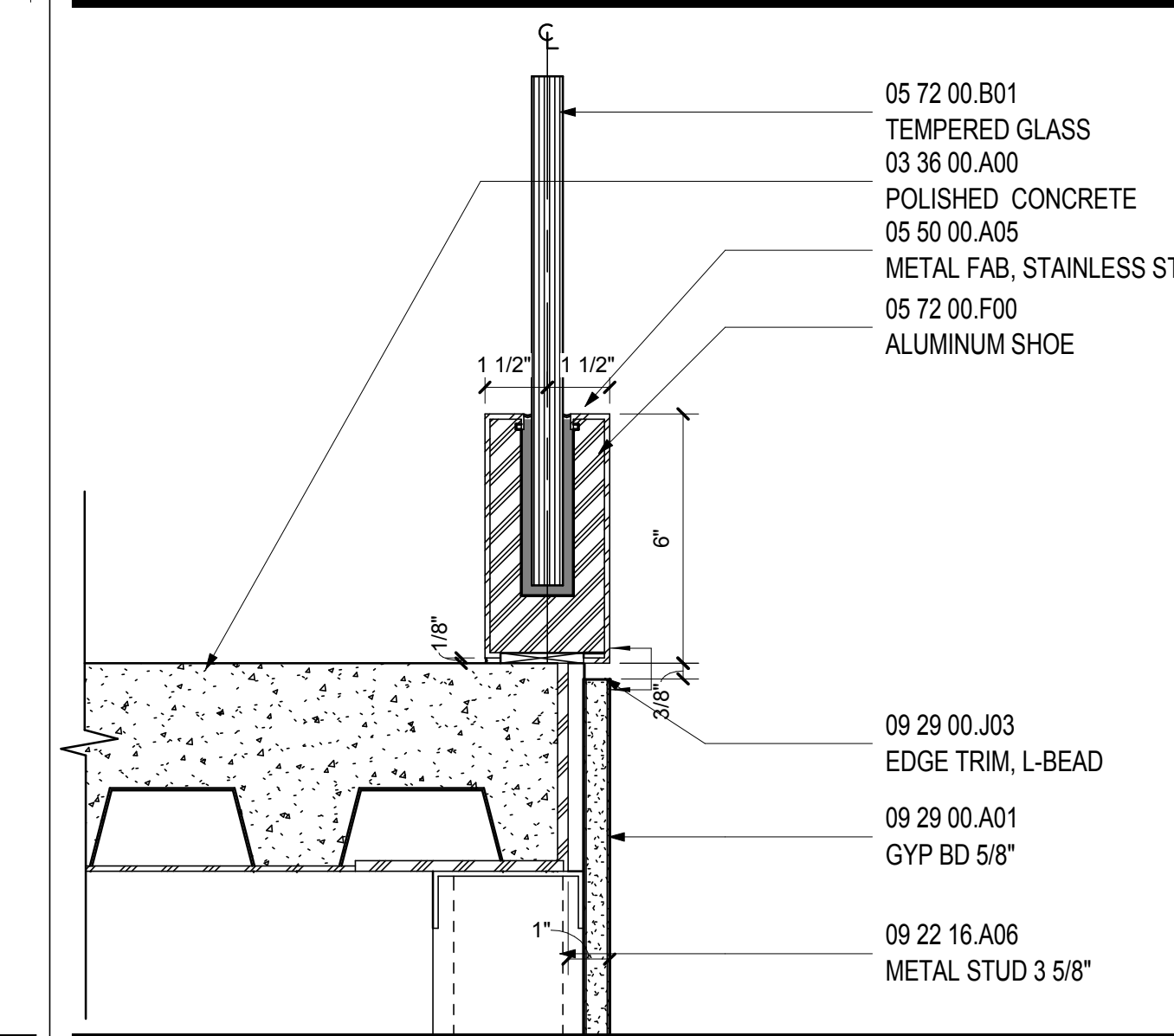
SECTION @ ESCL #5 RAIL 4
SCALE: 1 1/2" = 1'-0" A10.21



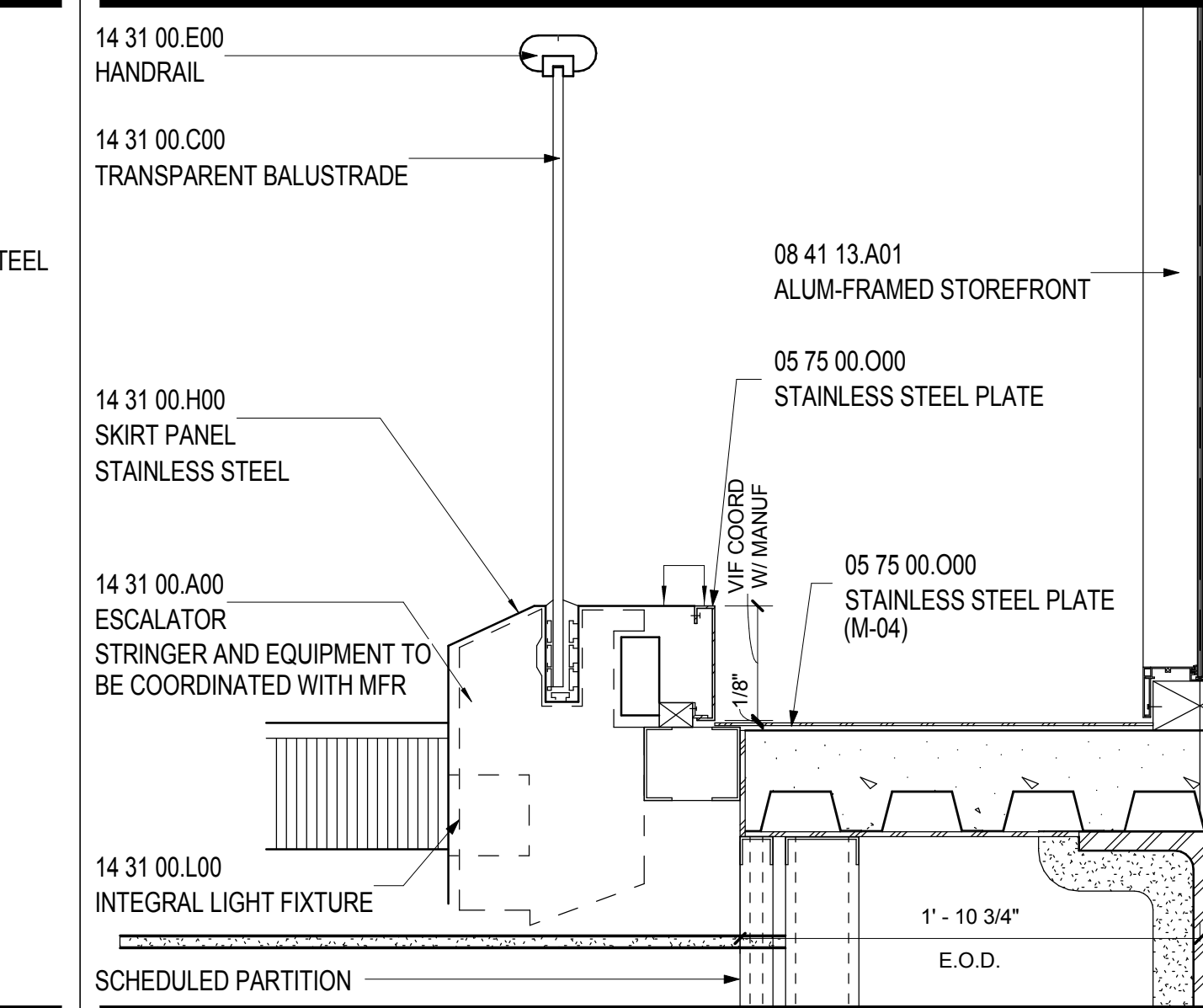
MONUMENTAL STAIR NOSING DETAIL 19
SCALE: 3" = 1'-0" A10.22



SECTION @ GLASS RAIL 14
SCALE: 3" = 1'-0" A11.10



SECTION @ GLASS RAIL.
SCALE: 3" = 1'-0" A10.20



SECTION @ ESCL #5 LANDING/RAIL 5
SCALE: 1 1/2" = 1'-0" A10.21

SHEET NOTES

14 31 00 E00 HANDRAIL
14 31 00 C00 TRANSPARENT BALUSTRADE
05 72 00 C02 VERTICAL POST, STAINLESS STEEL
14 31 00 H00 SKIRT PANEL STAINLESS STEEL
14 31 00 A00 ESCALATOR STRINGER AND EQUIPMENT TO BE COORDINATED WITH MFR
05 50 00 A05 METAL FAB, STAINLESS STEEL
09 64 66 A00 WOOD PLANK FLOORING
09 64 66 B00 PLYWOOD SUBFLOORING
05 51 00 A06 METAL PAN STAIRS CONC FILLED

14 31 00 E00 HANDRAIL
14 31 00 C00 TRANSPARENT BALUSTRADE
03 36 00 A00 POLISHED CONCRETE
14 31 00 H00 SKIRT PANEL STAINLESS STEEL
14 31 00 A00 ESCALATOR STRINGER AND EQUIPMENT TO BE COORDINATED WITH MFR
14 31 00 L00 INTEGRAL LIGHT FIXTURE

14 31 00 E00 HANDRAIL
14 31 00 C00 TRANSPARENT BALUSTRADE
03 36 00 A00 POLISHED CONCRETE
14 31 00 H00 SKIRT PANEL STAINLESS STEEL
14 31 00 A00 ESCALATOR STRINGER AND EQUIPMENT TO BE COORDINATED WITH MFR
14 31 00 L00 INTEGRAL LIGHT FIXTURE

14 31 00 E00 HANDRAIL
14 31 00 C00 TRANSPARENT BALUSTRADE
09 77 00 A00 SOLID PHENOLIC WALL PANEL
14 31 00 H00 SKIRT PANEL STAINLESS STEEL
14 31 00 A00 ESCALATOR STRINGER AND EQUIPMENT TO BE COORDINATED WITH MFR
05 50 00 A05 METAL FAB, STAINLESS STEEL
14 31 00 L00 INTEGRAL LIGHT FIXTURE

14 31 00 E00 HANDRAIL
14 31 00 C00 TRANSPARENT BALUSTRADE
08 41 13 A01 ALUM-FRAMED STOREFRONT
05 75 00 K00 STAINLESS STEEL PLATE
05 75 00 K00 STAINLESS STEEL PLATE (M-04)
14 31 00 L00 INTEGRAL LIGHT FIXTURE

Portland International Jetport
1001 Westbrook Street
Portland, Maine 04102

Gensler
2020 K Street, Northwest
Suite 200
Washington DC 20006
Telephone 202.721.5200
Facsimile 202.872.8587

Issue	Date & Issue Description	By	Check
01	01/21/09		
02	10/28/09		

Seal/Signature

 Project Name
 PWM Terminal Enhancement
 Project Number
 09-6395-000
 Description
 VERTICAL CIRCULATION - ESCALATOR DETAILS
 Scale
 As indicated
A10.22
 © 2009 Gensler