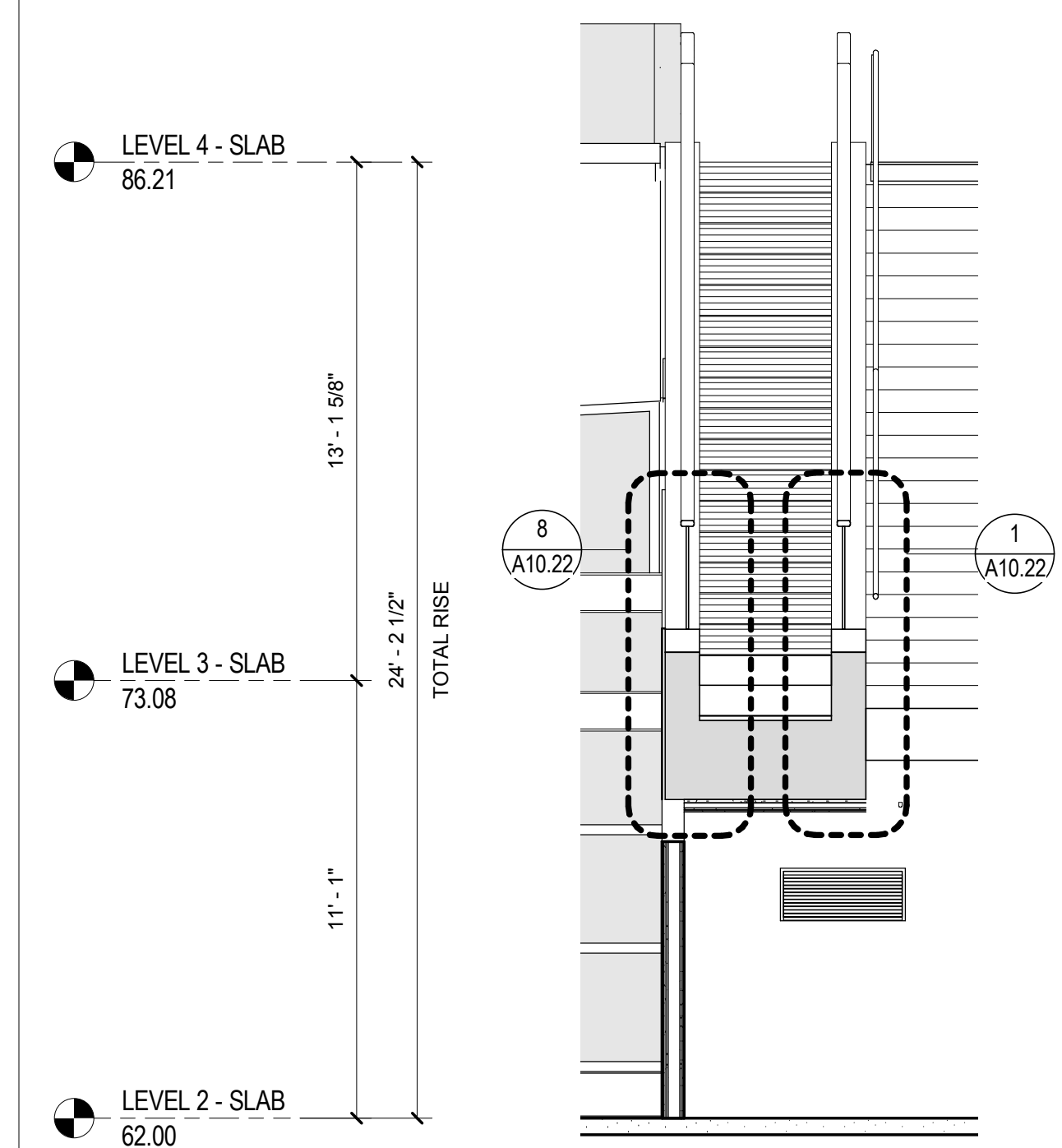


SECTION - STAIR 14

SCALE: 1/4" = 1'-0"

A10.20

3

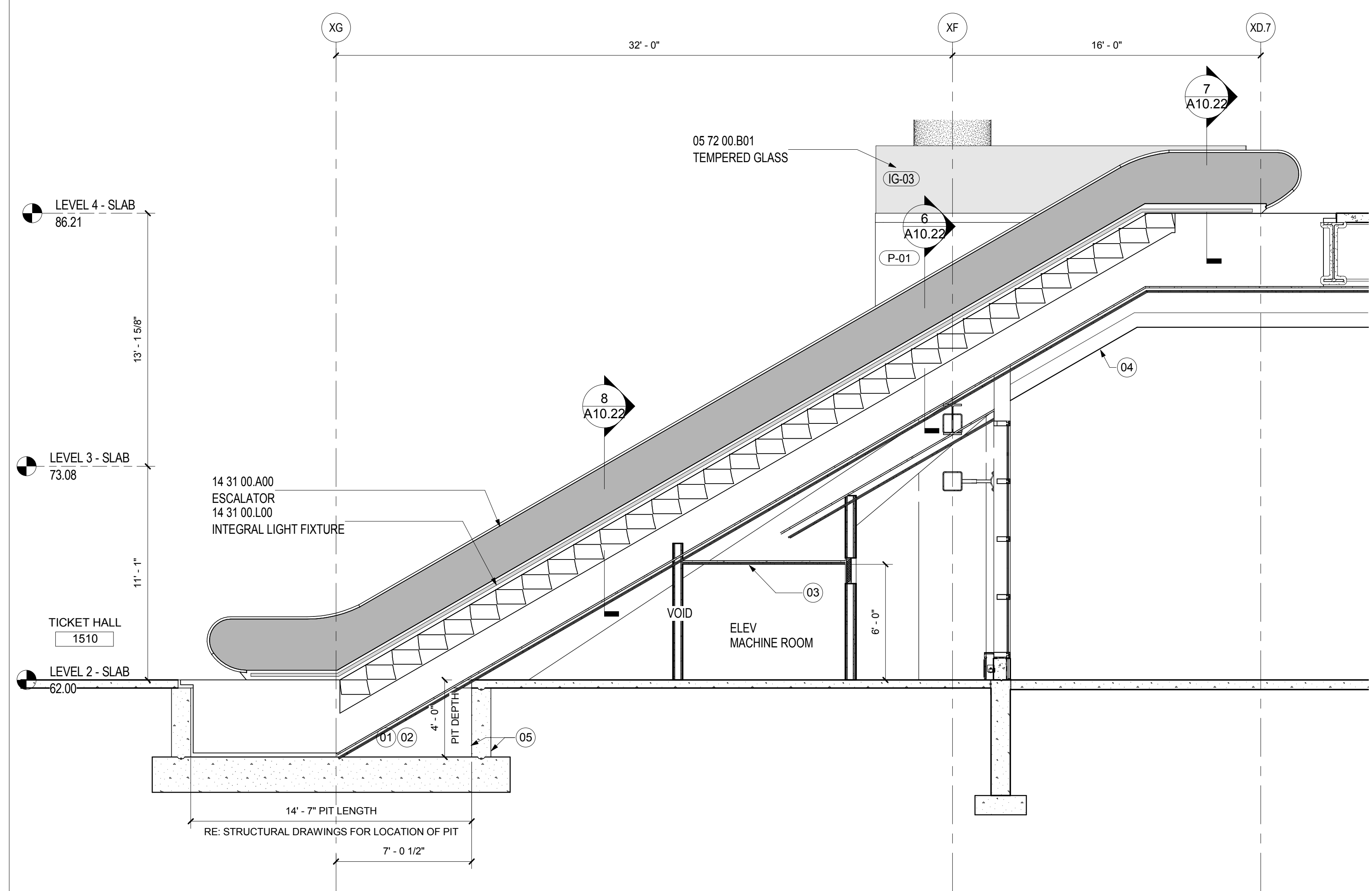


ESCALATOR #4 SECTION (ESCL #3 OPP)

SCALE: 1/4" = 1'-0"

A10.20

5

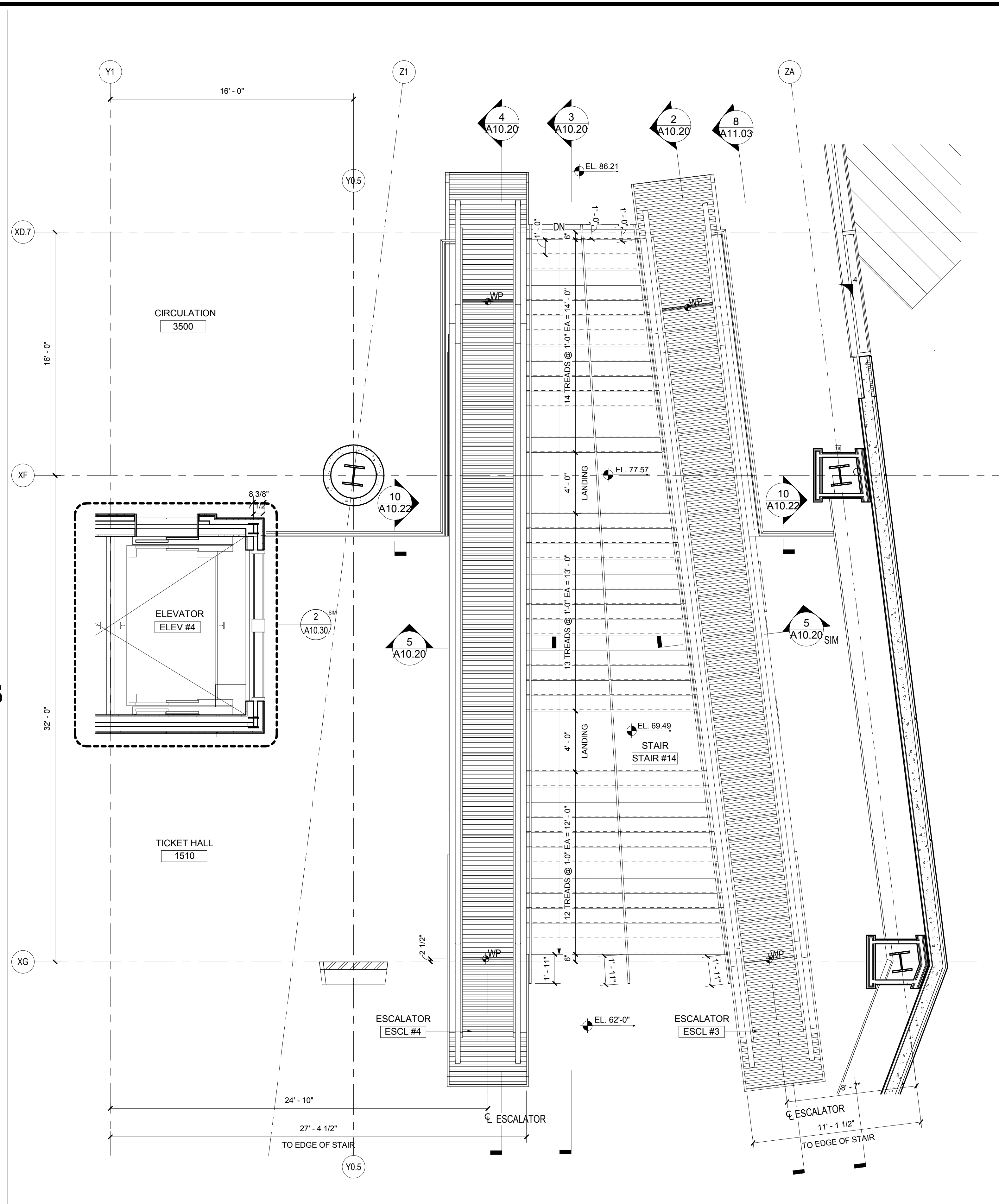


SECTION - ESCALATOR #4

SCALE: 1/4" = 1'-0"

A10.20

4

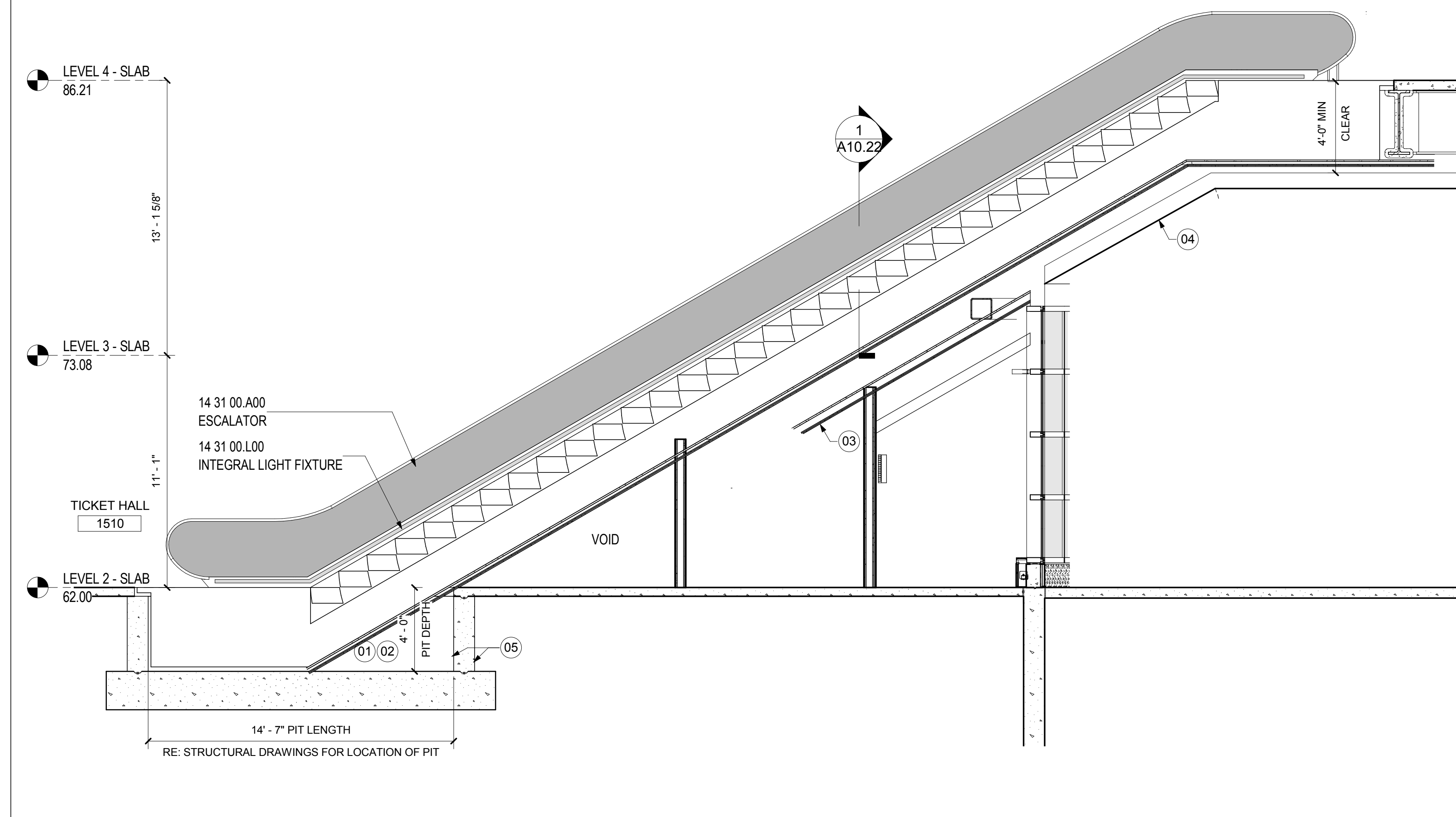


PLAN LEVEL 4 - ESCALATORS #3 & 4 / STAIR #14

SCALE: 1/4" = 1'-0"

A02.02.03

1



SECTION - ESCALATOR #3

SCALE: 1/4" = 1'-0"

A10.20

2

**SHEET NOTES**

- 01 PIT LENGTH, WIDTH AND DEPTH TO BE COORDINATED WITH SELECTED MANUFACTURER
- 02 HEAT DETECTOR PROVIDED AT BASE OF EACH ESCALATOR
- 03 ENCLOSE THE UNDERSIDE OF ALL ESCALATORS WITH FIRE RESISTIVE MATERIALS PER ASME A17.1. SOFFIT ASSEMBLY WEIGHT NOT TO EXCEED MANUFACTURER'S RECOMMENDATIONS.
- 04 LINE OF UNDERSIDE OF EXTERIOR METAL PANEL SOFFIT.
- 05 PROVIDED METAL OXIDE WATER PROOFING AND WATER STOPS IN AND AROUND PIT. RE: SECTION 07 16 19 IN THE PROJECT MANUAL FOR MORE INFORMATION.

**Portland International Jetport**

1001 Westbrook Street  
Portland, Maine 04102

**Gensler**

2020 K Street, Northwest  
Suite 200  
Washington DC 20006  
Telephone 202.721.5200  
Facsimile 202.872.8587

Issue	Date & Issue Description	By	Check
01	08/22/08		
02	12/03/08		
03	01/23/09		
04	10/28/09		

Seal/Signature



Project Name  
PWM Terminal Enhancement

Project Number  
09.6395.000

Description  
VERTICAL CIRCULATION - ESCALATORS #3 & 4 / STAIR #14

Scale  
1/4" = 1'-0"

**A10.20**

© 2009 Gensler