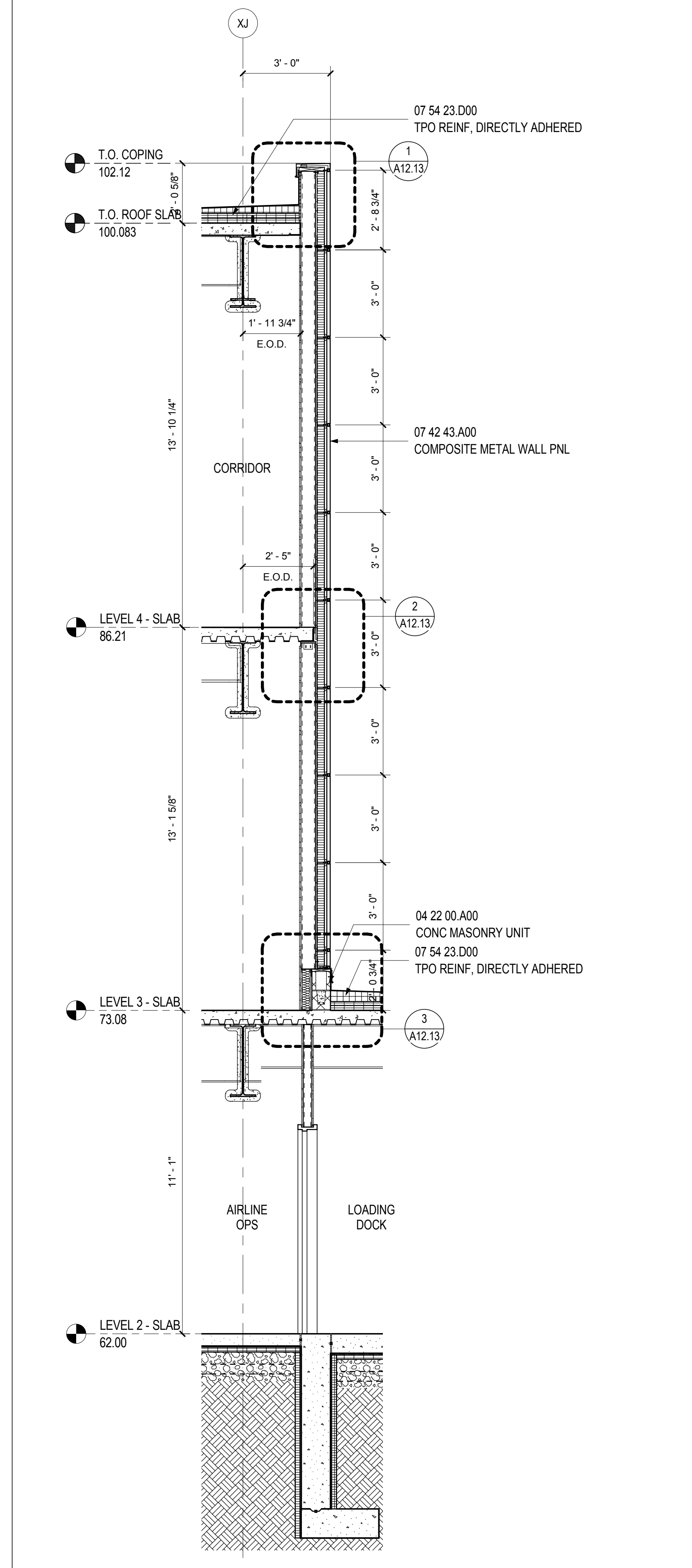


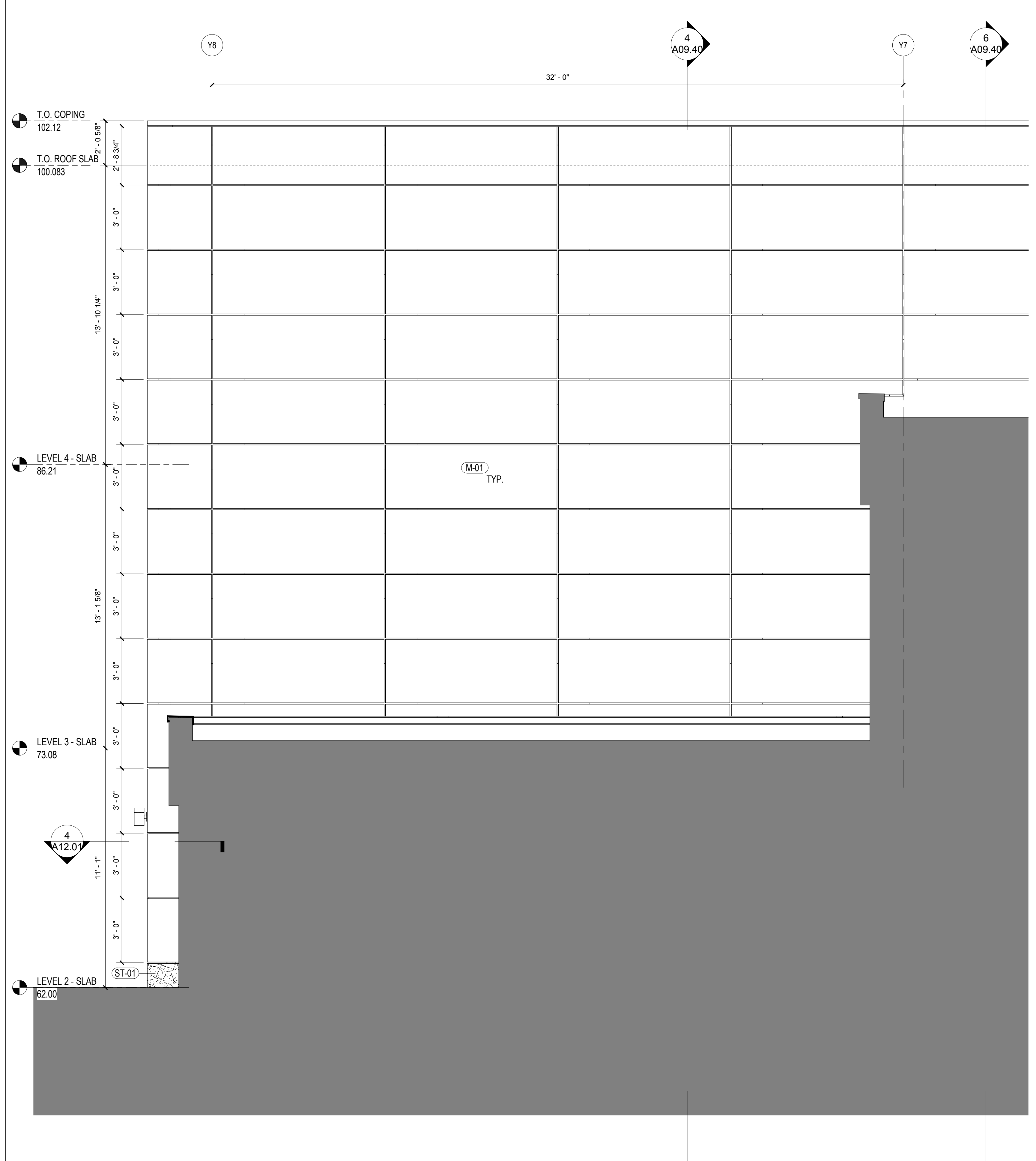
WALL TYPE C - SECTION B

SCALE: 3/8" = 1'-0" A09.40



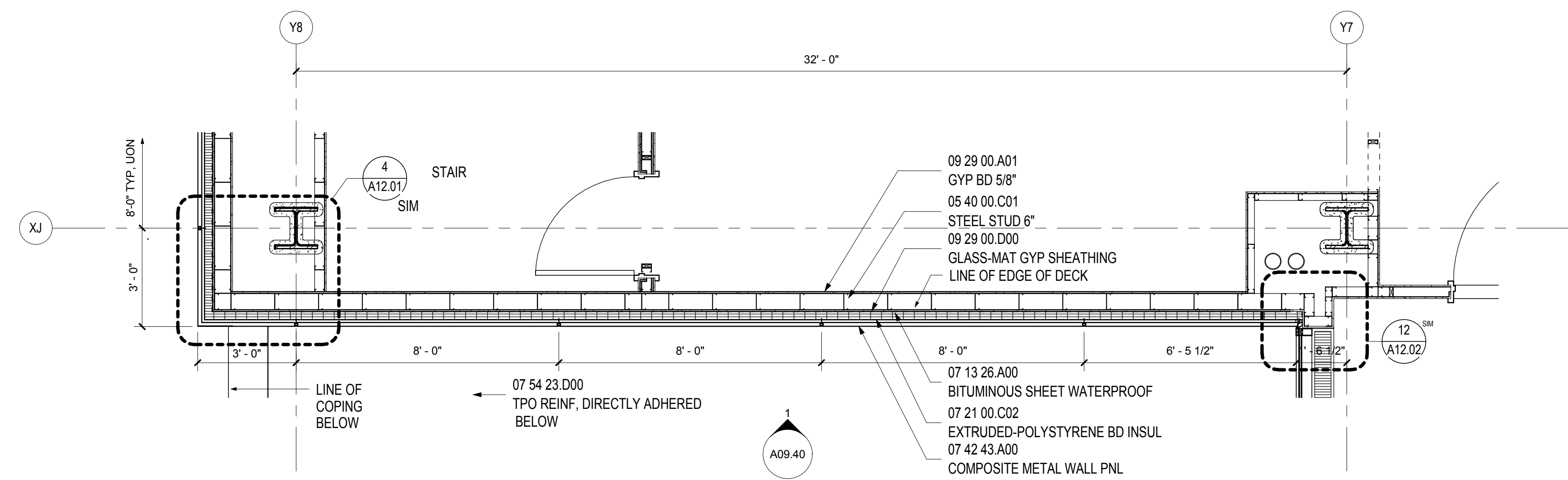
WALL TYPE C - SECTION A

SCALE: 3/8" = 1'-0" A09.40



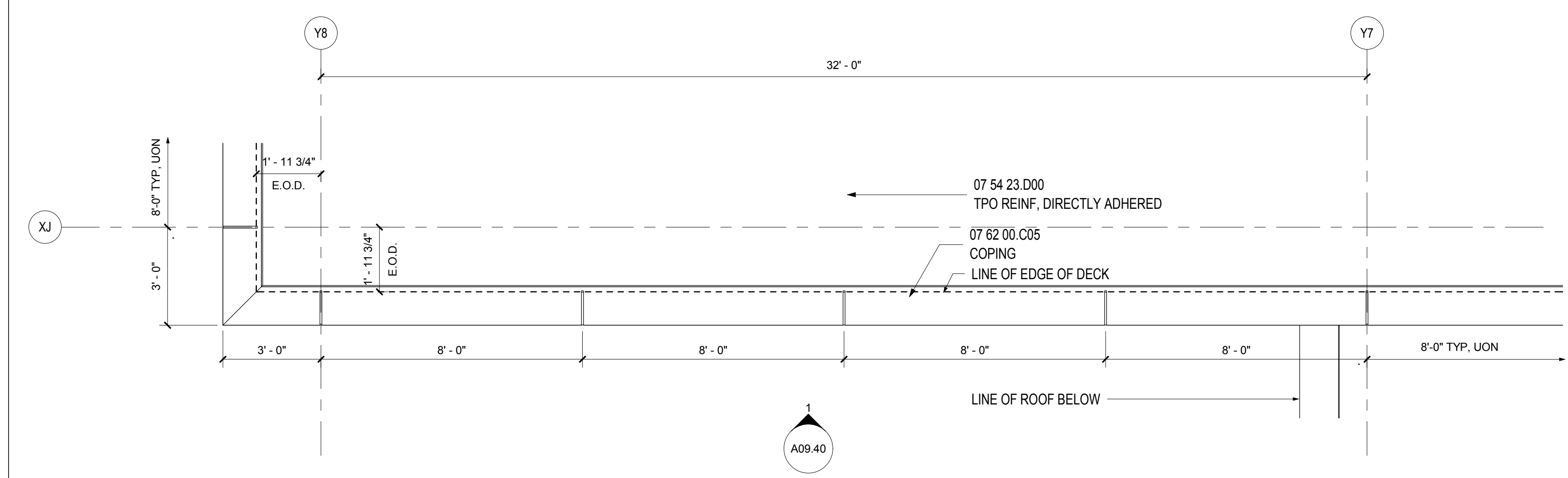
WALL TYPE C - ELEVATION

SCALE: 3/8" = 1'-0" A09.01



WALL TYPE C - PLAN LEVEL 3

SCALE: 3/8" = 1'-0" A09.40 A02.03.05



WALL TYPE C - PLAN ROOF

SCALE: 3/8" = 1'-0" A09.40 A02.05.04



WALL TYPE C - PLAN LEVEL 4

SCALE: 3/8" = 1'-0" A09.40 A02.04.05

SHEET NOTES

- 01 EXPANSION JOINT, RE: A02 SERIES FOR TYPE
- 02 SCHEDULED LIGHT FIXTURE.
- 03 EXISTING PRECAST FACADE TO REMAIN.
- 04 EXISTING STOREFRONT TO REMAIN.
- 05 EXPOSED STEEL TO RECEIVE INTUMESCENT FIRE-RESISTANT COATING & FINISHES AS SCHEDULED

Portland International Jetport

1001 Westbrook Street
Portland, Maine 04102

2020 K Street, Northwest
Suite 200
Washington DC 20006
Telephone 202.721.5200
Facsimile 202.872.8587

Gensler

Issue	Date & Issue Description	By	Check
01	07/11/08		
02	09/22/08		
03	12/03/08		
04	01/23/09		
05	10/26/09		

Seal/Signature



Project Name
PWM Terminal Enhancement

Project Number
09-6395-000

Description
WALL TYPE C

Scale
3/8" = 1'-0"

A09.40

© 2009 Gensler