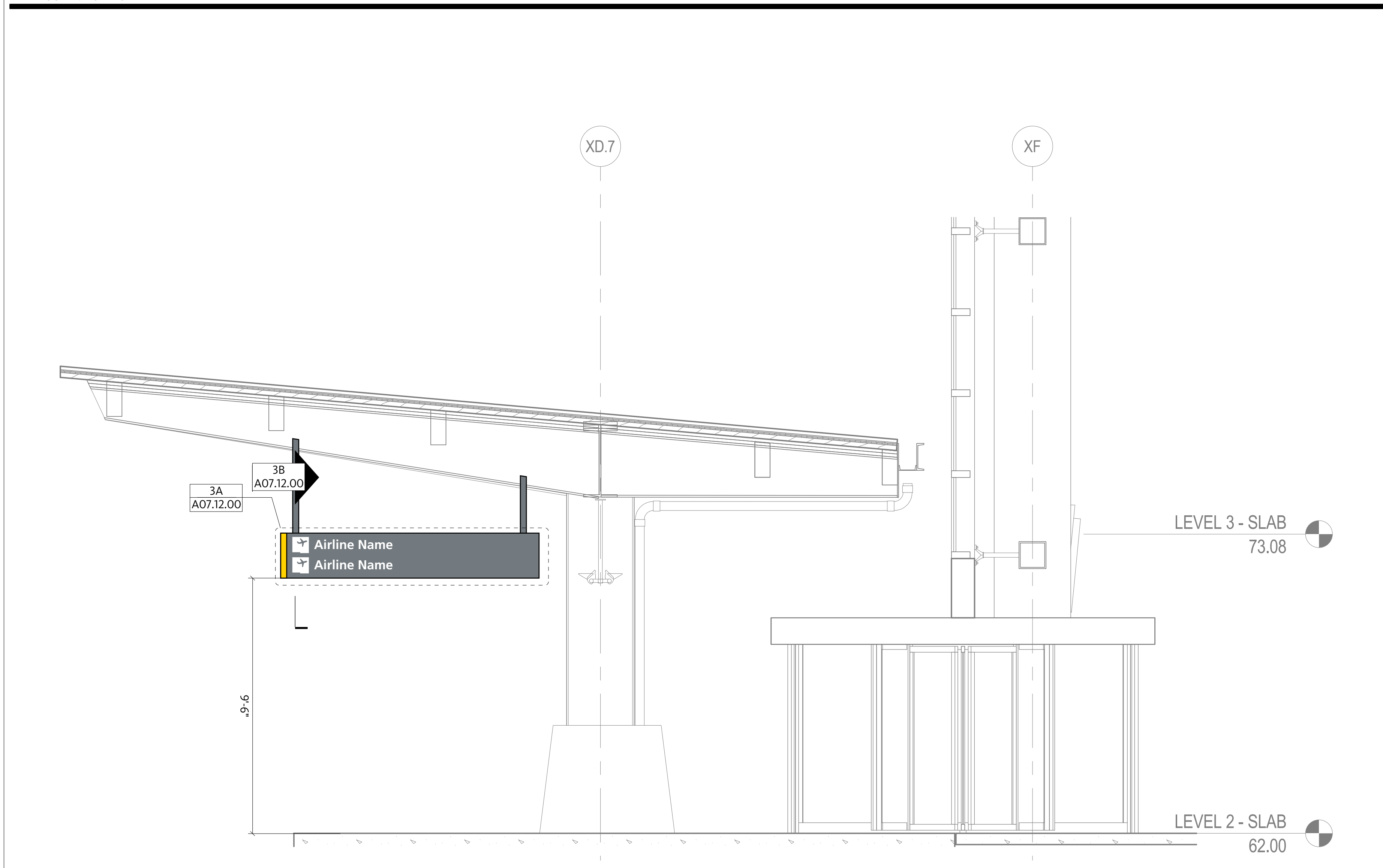
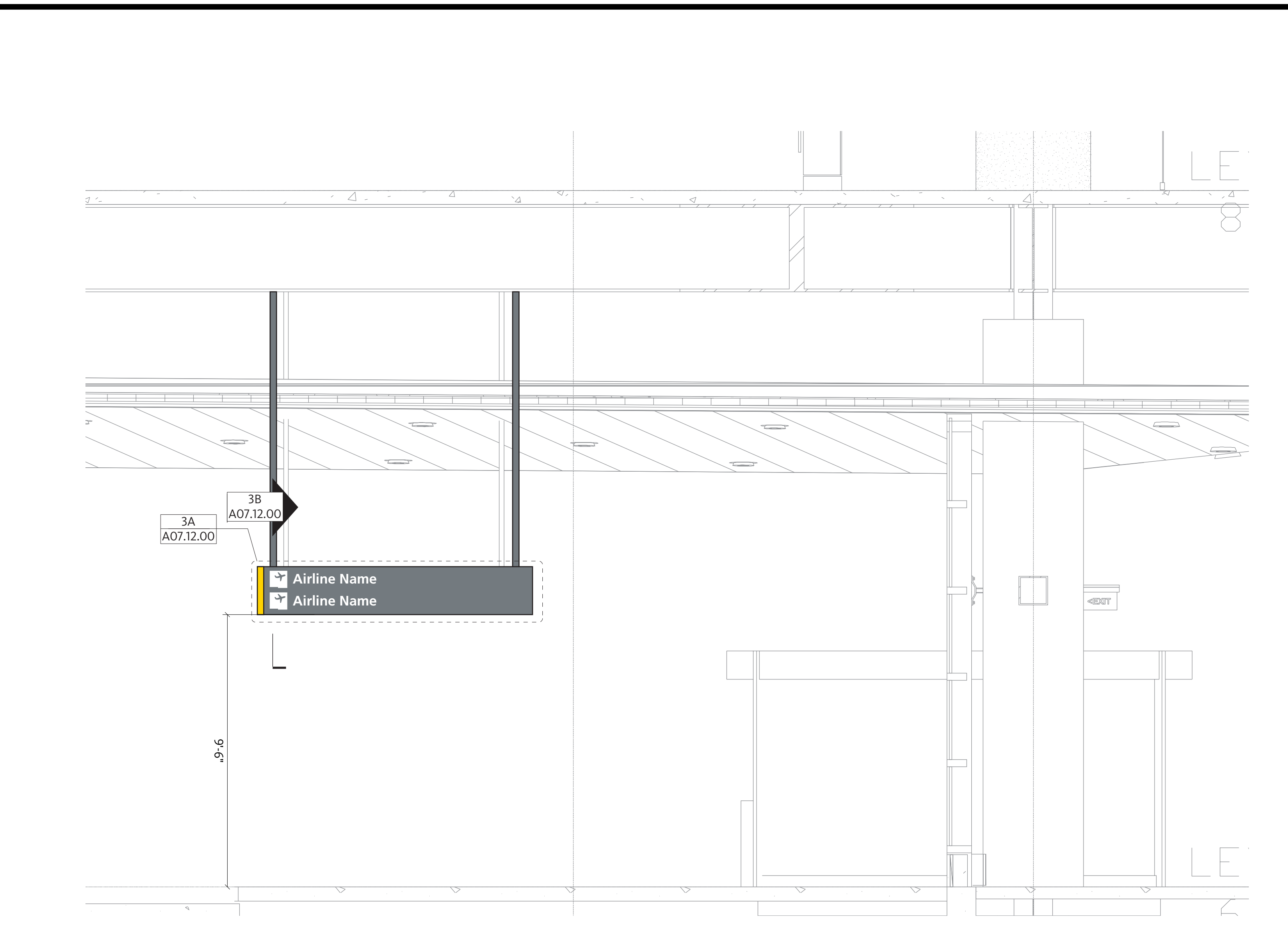


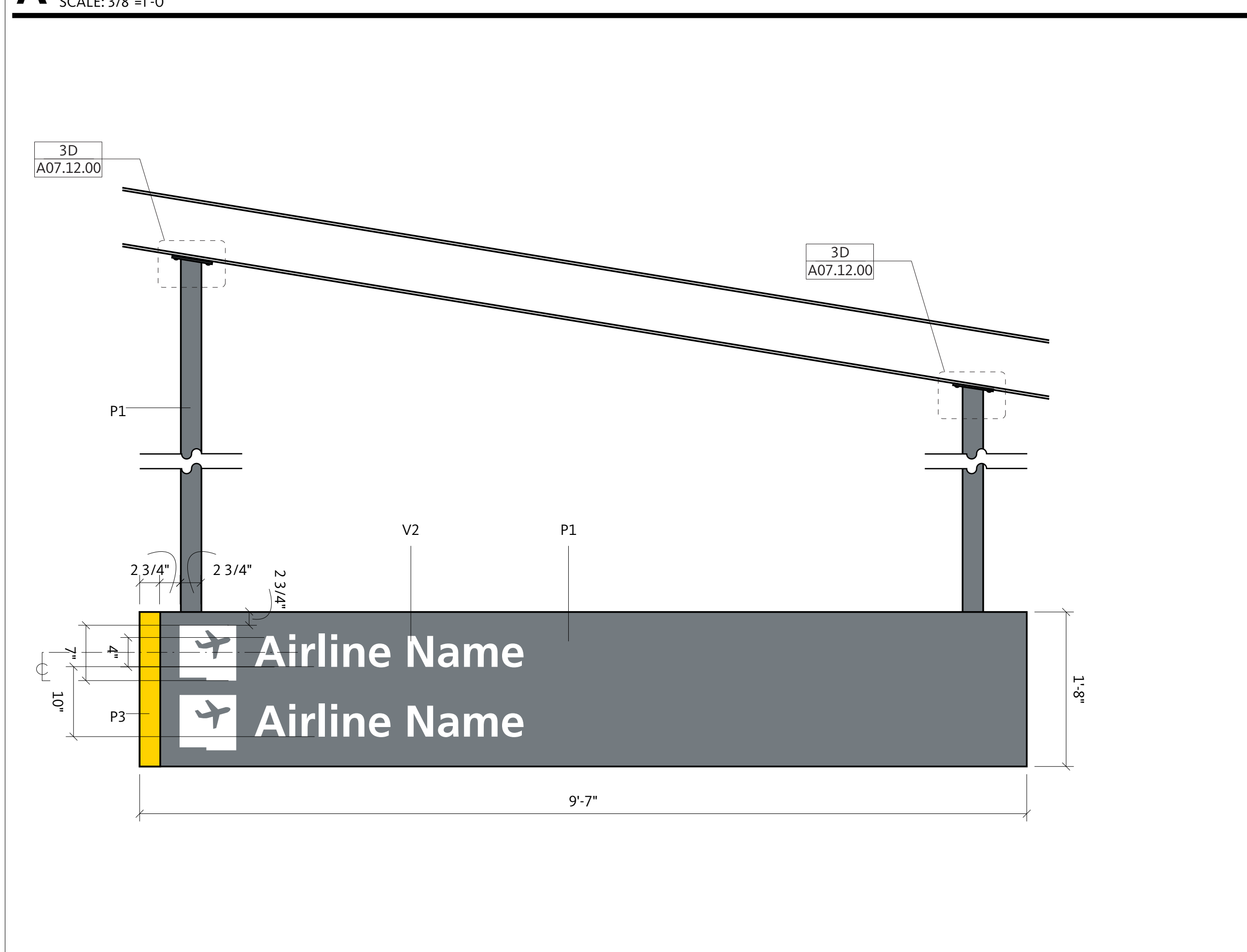
A D.1A & D.1B CURB ID: ELEVATION
SCALE: 1/8"=1'-0" **1**



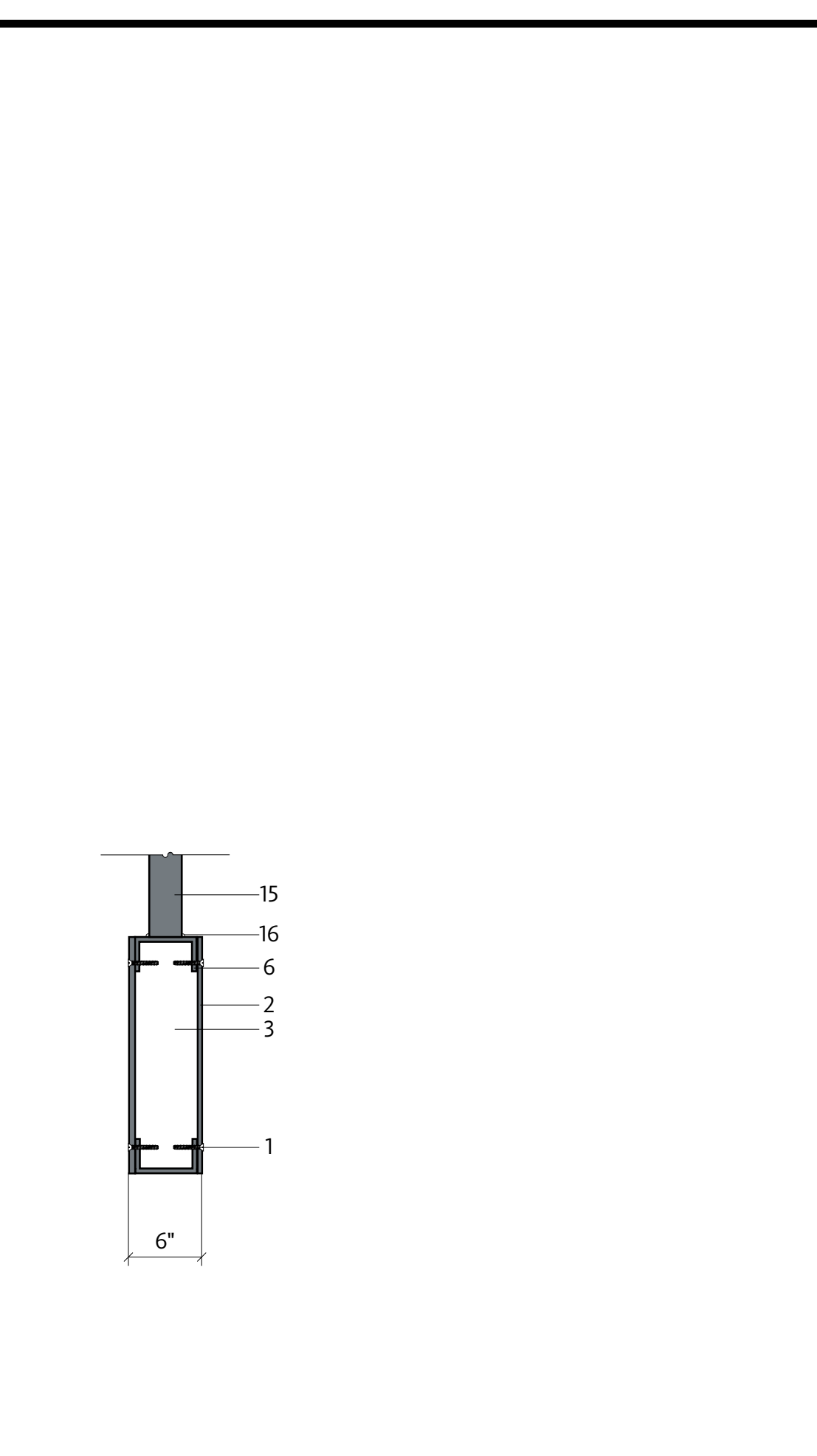
A D.1A CURB ID: ELEVATION (AT CANOPY)
SCALE: 3/8"=1'-0"



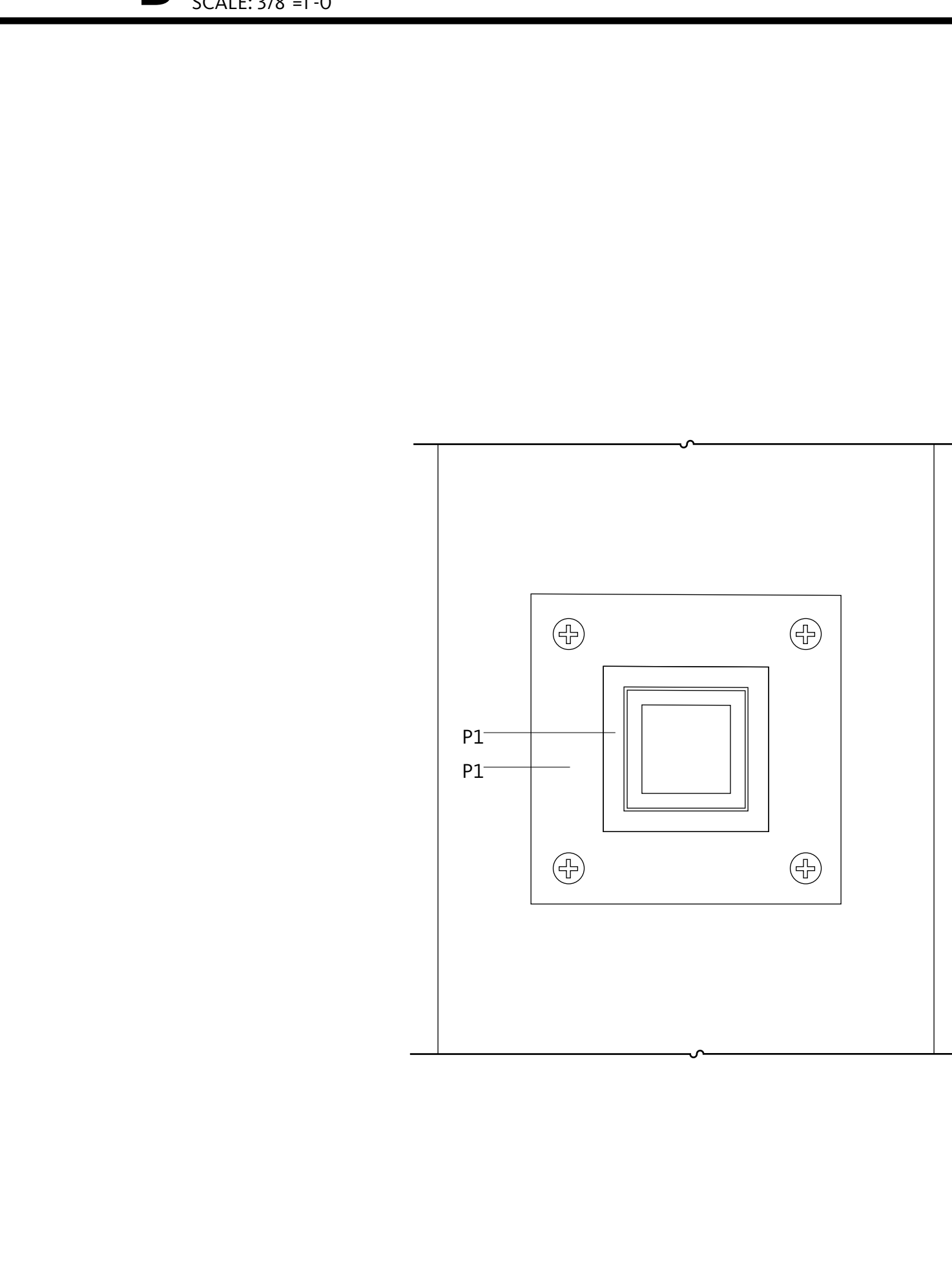
B D.1B CURB ID: ELEVATION (AT BELLY)
SCALE: 3/8"=1'-0" **2**



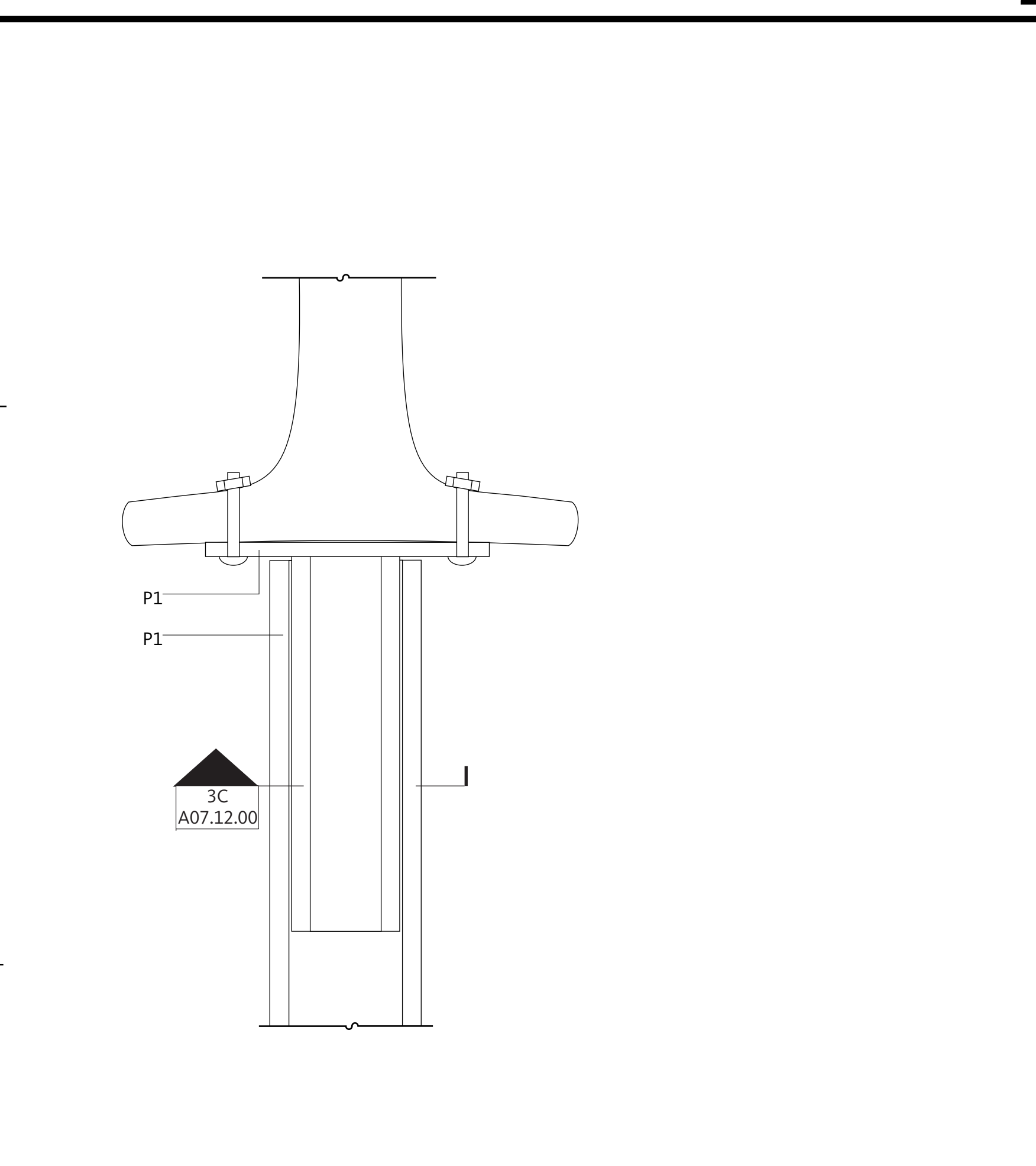
A D.1A AND D.1B CURB ID: DETAIL
SCALE: 1"=1'-0"



B D.1A & D.1B CURB ID: SECTION
SCALE: 1"=1'-0"



C D.1A & D.1B CURB ID: SECTION
SCALE: 6"=1'-0"



D D.1A & D.1B CURB ID: SECTION
SCALE: 6"=1'-0" **3**

SHEET NOTES

1. Counter Sunk Screw: Where visible, paint to match adjacent surfaces
2. Sign Body: MFI
3. Internal Armature: As necessary to prevent oil-canning, type determined by fabricator
4. Fluorescent Tube or LED
5. Ballasts (or equivalent) for Fluorescent Tube or LED
6. Sign Frame: MFI, aluminum armature
7. Mechanical Fastener: As necessary, steel type determined by fabricator
8. Wallpanel by G.C.: Provide blocking as necessary
9. Sign Panel: 4 mil. Dibond composite material, matte white paintable surfaces, from www.alcancompositesusa.com
10. Braille Beads: ADA compliant, match background color
11. Metal Stud: Mounted to back of Sign Body for installation
12. Fixed Sign Body
13. Moveable Sign Window
14. Fixed Sign Backer: Brake-formed aluminum
15. Sign Support: MFI, steel square pipe
16. Weld: 5/16" on all connecting edges, paint to match adjacent surfaces
17. VHB Foam Tape
18. Acetate Insert: Sign fabricator to supply first round of inserts and word processing templates for creating new inserts
19. Raised Lettering and/or Symbol: ADA compliant, match P1
20. Concealed Blocking: by G.C.
21. Sign Frame: MFI, P4, Mechanically fastened to the wall with concealed, anti-corrosive fasteners
22. Internally illuminated Sign Face: AC1 with V2 on 2nd surface. Removable for light fixture maintenance.
23. Neon or LED: White
24. Weep Holes
25. Transformer: in weatherproof case, connect to remote switch (and photocell/digital timer if requested). Switch location TBD with owner.
26. Halo lit ribbon letter: MFI, P3, Grind smooth all exposed welds. No visible fasteners/seams on front surface. Mechanically fastened to the wall with concealed, anti-corrosive fasteners.
27. Mounting Rod: MFI, P 1, double bolted on each end. As minimum appearance as possible. Fabricator to coordinate with GC to install support prior to wall being finished.
28. Rubber Gasket
29. Text: Direct print to second surface of glass
30. Solid Surfacing by G.C.

Portland International Jetport
1001 Westbrook Street
Portland, Maine 04102

Gensler
2020 K Street, Northwest
Suite 200
Washington DC 20006
Telephone 202.721.5200
Facsimile 202.872.8587

Issue	Date & Issue Description	By	Check
01	01/23/09 95% CONSTRUCTION DOCUMENTS	BR	CK
02	10/26/09 ISSUED FOR PERMIT	BR/SH	MJ/TO

GENERAL NOTES

Project Name
PWM Terminal Enhancement

Project Number
09-6395-000

Description
SIGNAGE & WAYFINDING: ELEVATIONS, SECTIONS, DETAILS

Scale
As Indicated

A07.12.00