

**SHEET NOTES**

- 01 CONTRACTION/CONSTRUCTION JOINT. RE: STRUCTURAL DRAWINGS FOR MORE INFORMATION.
- 02 ARCHITECTURAL EXPOSED CONCRETE COLUMN WITH CS-02 CONCRETE SEALER. RE: PROJECT MANUAL SECTION 03 33 00
- 03 FLIGHT INFORMATION DISPLAY SYSTEM
- 04 INTERNATIONAL INBOUND FENCE W/ SLIDING DOOR
- 05 DOCK LEVELER WITH ASSOCIATED DOCK BUMPERS
- 06 TRENCH DRAIN AT BOTTOM OF RAMP. REFER TO ENGINEERING DRAWINGS C02 SERIES
- 07 TRASH COMPACTOR (NIC)
- 08 FIRE SHUTTER
- 09 TICKET COUNTER MILLWORK AND BAGWELL
- 10 SIGNAGE PYLON. RE: A07 SERIES FOR MORE INFORMATION
- 11 BAGGAGE EQUIPMENT. RE: BAGGAGE DRAWINGS FOR MORE INFORMATION.
- 12 FIRE/SECURITY OVERHEAD COILING DOOR. RE: BAGGAGE DRAWINGS FOR MORE INFORMATION. COORDINATE WALL AND FIRE/SECURITY DOOR LOCATIONS WITH BAGGAGE DRAWINGS
- 13 PIPE BOLLARD. RE: DETAIL 11A12.15
- 14 PAINTED STEEL LOUVERED SWINGING GATE/FENCE.
- 15 POTABLE WATER CABINET. RE: MEP DRAWINGS FOR MORE INFORMATION
- 16 ENCLOSURE FOR ESCALATOR PIT ABOVE TO BE 2HR RATED GYPSUM PARTITION TYPE B3A AT WALLS. RE: STRUCTURAL DRAWINGS FOR MORE INFORMATION.
- 17 LOCATION OF PBB DISCONNECT SWITCH. RE: ELECTRICAL DRAWINGS FOR MORE INFORMATION.
- 18 PBB PEDESTAL. RE: STRUCTURAL DRAWINGS FOR FOUNDATION DETAIL AND SIZE
- 19 LOCATION OF DOCK LEVELER CONTROL. RE: PROJECT MANUAL FOR MORE INFORMATION.
- 20 ALL EXISTING TO REMAIN. ROOM TO BE USED BY OWNER FOR BHS STORAGE AND MAINTENANCE
- 21 LINE OF FIXED LINK ABOVE.
- 22 LINE OF SOFFIT ABOVE
- 23 LINE OF CANOPY ABOVE.
- 24 EXISTING PBB PEDESTAL TO REMAIN.
- 25 FIN TUBE ENCLOSURE. RE: MECHANICAL DRAWINGS FOR FIN TUBE INFORMATION.
- 26 HATCHED AREA INDICATES AREA OF 1/2" SLAB DEPRESSION FOR INSTALLATION OF REVOLVING DOOR AND WALK OFF MAT.
- 27 SMARTE CARTES. RE: A03.02.05 AND ELECTRICAL DRAWINGS FOR MORE INFORMATION.
- 28 AOA FENCE. RE: CIVIL DRAWINGS FOR MORE INFORMATION
- 29 OPENING(S) FOR CONDUIT RUNS EXITING AND ENTERING THE ELECTRICAL CLOSET. COORDINATE WITH STRUCTURE
- 30 2-HR RATED CEILING ABOVE (LIGHTLY HATCHED AREA). REFER TO REFLECTED CEILING PLAN.
- 31 PROVIDE WALL MOUNTED HANDRAILS AT RAMP MOUNTED AT 3'-0" TO TOP OF RAIL. RE: A10.04 FOR DETAILS
- 32 PATCH, INFILL, REPAIR HOLES IN EXISTING CONCRETE COLUMNS WHERE AIRLINE SIGNAGE WAS DEMOLISHED. PAINT COLUMNS TO MATCH EXISTING FINISH. RE: SECTION 09 91 00 FOR EXTERIOR PAINTING IN PROJECT MANUAL.
- 33 EXISTING BRICK SIDEWALK TO BE REPAIRED, REPLACED AND FILLED IN AS REQUIRED TO MEET NEW CONCRETE SIDEWALK. LINE OF TRANSITION TO FOLLOW LINE OF BUILDING ABOVE. RE: CIVIL DRAWINGS FOR MORE INFORMATION.
- 34 RETAINING WALL AT TRANSFORMER. RE: CIVIL DRAWINGS FOR ADDITIONAL INFORMATION
- 35 SELF SERVICE DEVICE KIOSK MILLWORK
- 36 PROVIDE STEEL TUBE GUARD RAIL 3'-6" HIGH AT RETAINING WALLS. VERTICALS TO BE SLEEVED INTO CONCRETE WALL

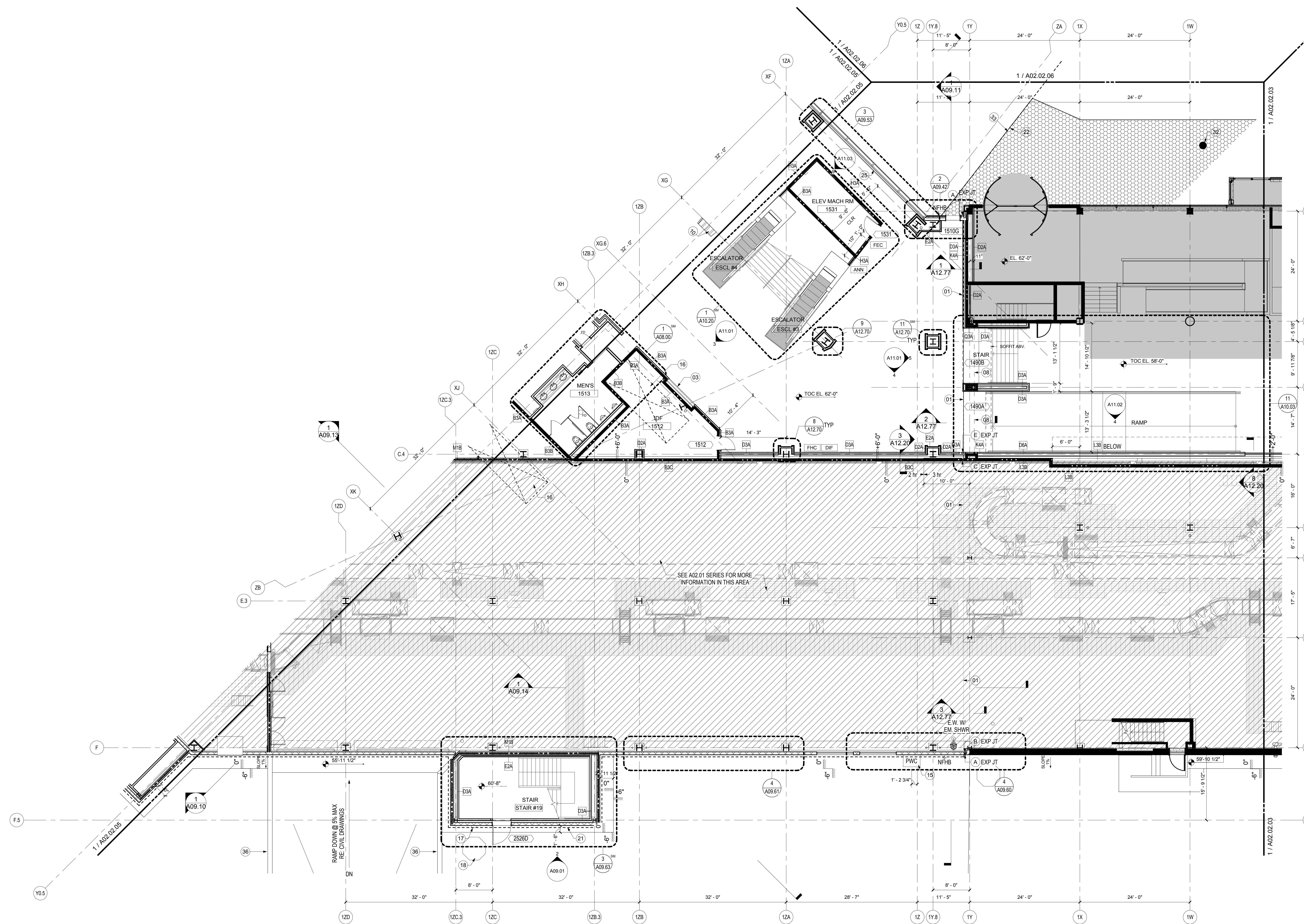
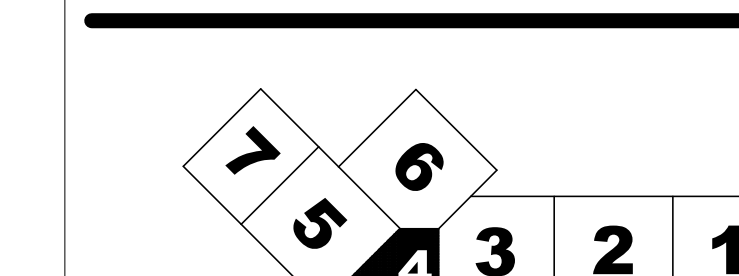
**EXPANSION JOINTS**

- (A) MODEL: SEISMIC COLORSEAL 4" (COLOR: BRONZE) MFG: EMSEAL
- (B) MODEL: FWS 400 (COLOR: GRAY) MFG: C/S GROUP
- (C) MODEL: FWS 400 MFX-4W FIRE BARRIER (COLOR: GRAY) MFG: C/S GROUP
- (D) MODEL: FWS 400 (COLOR: WHITE) MFG: C/S GROUP
- (E) MODEL: AFW 400 MFG: C/S GROUP
- (G) MODEL: SSRW-500 W/ FIRE BARRIER MFG: C/S GROUP
- (H) MODEL: FWSC-400 (COLOR: WHITE) MFG: C/S GROUP
- (J) MODEL: BRJ-400 W/ FIRE BARRIER MFG: C/S GROUP
- (K) MODEL: BRJW-400 W/ FIRE BARRIER MFG: C/S GROUP

**GENERAL NOTES**

- A NOT IN CONTRACT (NIC)
- B ALL COLUMNS TO BE FIREPROOFED. TYP. RE: PROJECT MANUAL SECTION 07 81 00
- C HATCHED WALLS INDICATE RATING REQUIREMENT. RE: A00.12 FOR GRAPHIC SYMBOLS
- D ALL BAGGAGE CONVEYORS SHOWN FOR REFERENCE ONLY
- E REFER TO BAGGAGE DRAWINGS FOR LOCATION IMPACT PROTECTION OF BAG BELTS.
- F REFER TO BAGGAGE, MEP, IT AND SECURITY DRAWINGS FOR EQUIPMENT AND SYSTEM INFORMATION
- G PROVIDE 3-HOUR SPRAY-ON FIREPROOFING ON UNDERSIDE OF LEVEL 3 SLAB
- H EXTERIOR FACE OF FOUNDATION WALLS TO HAVE COLD FLUID APPLIED WATERPROOFING. TYPICAL. RE: SECTION 07 14 16 IN PROJECT MANUAL FOR MORE INFORMATION.

**KEY PLAN**



**CONSTRUCTION PLAN - LEVEL 2 - ZONE 4**

SCALE: 1/8" = 1'-0"

A01.DS1

Issue	Date & Issue Description	By	Check
01	07/11/08		
02	SCHEMATIC DESIGN		
02	09/22/08		
03	DESIGN DEVELOPMENT		
03	12/03/08		
04	75% CONSTRUCTION DOCUMENTS		
04	01/23/09		
05	95% CONSTRUCTION DOCUMENTS		
05	10/26/09		
	ISSUED FOR PERMIT		

Seal/Signature

Project Name  
PJM Terminal Enhancement

Project Number  
09 6395.000

Description  
CONSTRUCTION PLAN - LEVEL 2 - ZONE 4

Scale  
As indicated

**A02.02.04**