

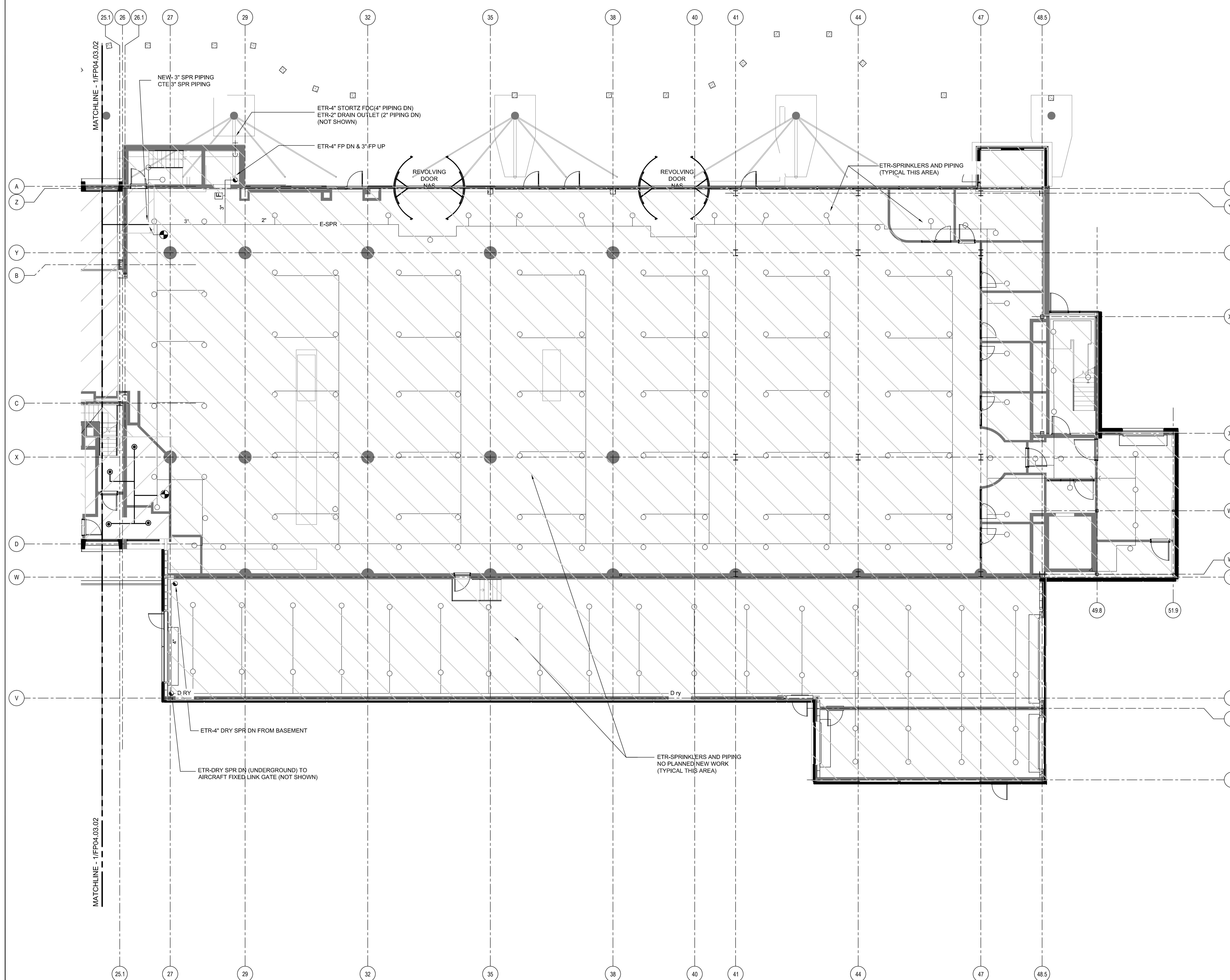
SHEET NOTES

Portland International  
Jetport  
1001 Westbrook Street  
Portland, Maine 04102

**Gensler**  
2020 K Street, NW  
Suite 200  
Washington, DC 20006  
Telephone 202.721.5200  
Facsimile 202.872.8587

**oest ASSOCIATES, INC.**  
345 Gopham Road South Portland, ME 04106 P: (207) 741-1770 F: (207) 774-1244 www.oest.com  
engineers • architects • surveyors • construction managers

**FIRE RISK MANAGEMENT, INC.**  
1 Front Street  
South Portland, ME 04106 P: (207) 442-7200  
www.fire-risk.com

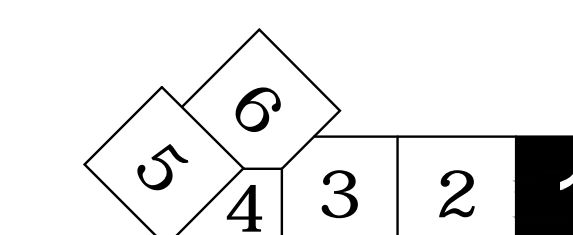


GENERAL NOTES

A SEE SHEET FP00.01 FOR LEGEND, SCHEDULES & GENERAL NOTES.

Issue	Date & Issue Description	By	Check
01	09/22/08	SKD	WMC
02	12/03/08	SKD	WMC
03	01/23/09	MHY	JLD
04	10/26/09	JLD	SKD

KEY PLAN



Scale  
1/8" = 1'-0"



**FP04.02.01**

©2009 Gensler

**FIRE PROTECTION PLAN - LEVEL 2 - ZONE 1**  
SCALE: 1/8"=1'-0"