

SHEET NOTES

- 01 CONTRACTOR SHALL BE RESPONSIBLE FOR THE INSTALLATION OF TRANSDUCER CABINET ASSOCIATED WITH NEW SIMPLEXGRINNELL 4100U FIRE ALARM PANEL. LOCATION OF 4100U AND TRANSDUCER CABINET WITH BPS SHALL BE COORDINATED WITH OTHER TRADES. SEE FA12.00 FOR POWER SUPPLY DETAIL.
- 02 A NEW ANNUNCIATOR PANEL SHALL BE INSTALLED AS SHOWN ON THIS PLAN. FINAL LOCATION SHALL BE APPROVED BY THE ARCHITECT. SEE FA12.03 FOR ANNUNCIATOR DETAIL.
- 03 INSTALL MONITOR MODULES AS SHOWN IN THE PLAN. COORDINATE FINAL LOCATION WITH FIRE PROTECTION CONTRACTOR PRIOR TO ANY INSTALLATION WORK.
- 04 NEW SMOKE DETECTORS TO BE MOUNTED ON BOTH SIDES OF THE FIRE SHUTTER. DETECTION SHALL BE WITHIN FIVE FEET OF THE DOORS AND SHALL BE MOUNTED IN ACCORDANCE WITH NFPA 72. INITIATION OF THE DETECTORS SHALL CAUSE THE CONTROL MODULE LOCATED ADJACENT TO THE DIP PANEL TO INITIATE THE SYSTEMS FIRE MODE AND CLOSE THE FIRE SHUTTER. COORDINATE WITH OTHER TRADES TO DETERMINE FINAL QUANTITIES AND LOCATION OF MODULES AND PROVIDE THE NECESSARY 24VDC CIRCUITING AND SLC CIRCUITING TO THE MODULE AND DETECTOR.
- 05 INSTALL FIRE ALARM HORN/STROBE AND EXTEND CIRCUIT FROM THE EXISTING SYSTEM AS SHOWN IN THE PLAN. CONTRACTOR SHALL PROVIDE SUFFICIENT COVERAGE AND PROVIDE ADDITIONAL DEVICES FOR NOTIFICATION IF REQUIRED. COORDINATE WITH ALL OTHER TRADES PRIOR TO INSTALLATION.

Portland International Jetport

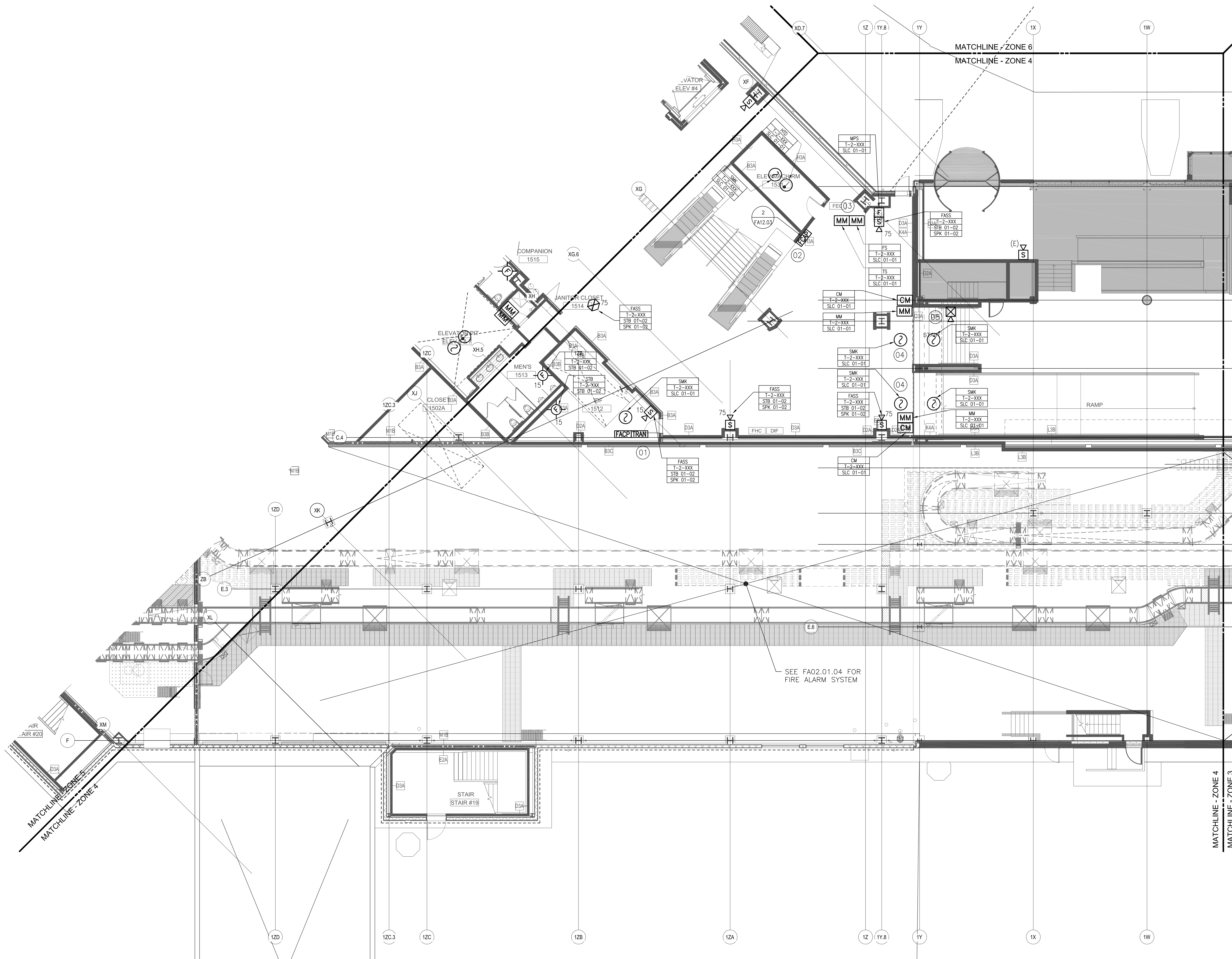
1001 Westbrook Street
Portland, Maine 04102

Gensler

2020 K Street, Northwest
Suite 200
Washington DC 20006
Telephone 202.721.5200
Facsimile 202.872.8587

ARORA
Solutions for Secure Environments

Arora Engineers, Inc.
61 Wilmington - West Chester Pike
Suite #100
Chadds Ford, PA 19317
T: (610) 459-7900
F: (610) 459-7950



GENERAL NOTES

- A MOUNTING FOR ALL DEVICES SHALL COMPLY WITH IBC 2003, NFPA 90A, NFPA 72, NEC, ADAAG AND ALL APPLICABLE LOCAL CODES.
- B VISUAL NOTIFICATION APPLIANCES SHALL BE SET TO THE CANDELA RATING ASSIGNED ON THE DRAWINGS. SPEAKERS SHALL BE TAPPED AT THE WATTAGE SELECTED BY THE SYSTEM MANUFACTURER ON THE APPROVED SHOP DRAWINGS.
- C IN CASES WHERE AN APPLIANCE CANNOT BE LOCATED WHERE SHOWN ON THE DRAWINGS, DUE TO PHYSICAL RESTRICTIONS, NOTIFICATION APPLIANCES MAY BE ABLE TO BE MOVED TO CEILING MOUNT DEVICES UPON APPROVAL BY THE ENGINEER. UPON APPROVAL, DEVICES SHALL BE UL LISTED FOR CEILING MOUNTED APPLICATIONS.
- D MORE THAN TWO VISIBLE NOTIFICATION APPLIANCES OR GROUPS OF VISIBLE NOTIFICATION APPLIANCES IN THE SAME ROOM OR ADJACENT SPACE WITHIN THE SAME FIELD OF VIEW SHALL FLASH IN SYNCHRONIZATION. THIS SHALL INCLUDE SYNCHRONIZATION OF STROBES OPERATED BY SEPARATE SYSTEMS.

Issue	Date & Issue Description	By	Check
10/26/09	100% ISSUED FOR PERMIT		

Seal/Signature

Project Name
PWM TERMINAL EXPANSION

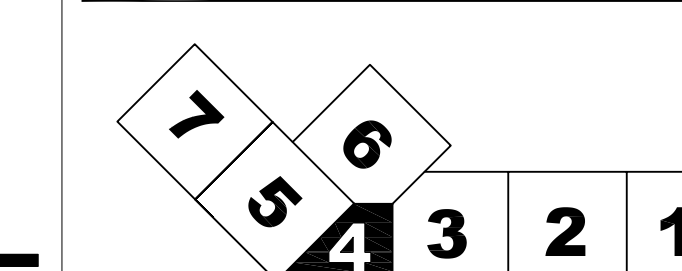
Project Number

CAD File Name
FA02.02.04

Description
FIRE ALARM CONSTRUCTION PLAN - LEVEL 2 - ZONE 4

Scale
As Indicated

KEY PLAN



LEVEL 2 - ZONE 4

SCALE: 1/8"=1'-0"

FA02.02.04

© 2006 Gensler