

SHEET NOTES

- 01 CONTRACTOR TO PROVIDE NEMA 3R LOCKABLE HOFFMAN BOX. BOX SHOULD CONTAIN 3 DVC COMPUTERS, 20 AMP QUAD RECEPTACLE FOR POWER, AND ONE 4 PORT DATA DUPLEX. ALL DVI CABLES WILL BE FED FROM LOCATION SPECIFIED FOR THE HOFFMAN ENCLOSURE TO THE INPUTS OF THREE SCREENS LOCATED AT MUFIDS BANK MU-TA2-03. 20 AMPERE CIRCUIT FOR THE DESCRIBED BANK WILL BE SHARED BY THIS QUAD CIRCUIT. REFER TO MF12.20 FOR FURTHER INFORMATION.
- 02 EACH SCREEN WILL HOUSE A DUPLEX RECEPTACLE BEHIND EACH SCREEN LOCATION. CIRCUIT TO BE INSTALLED BY ELECTRICAL CONTRACTOR.

Portland International Jetport
 1001 Westbrook Street
 Portland, Maine 04102

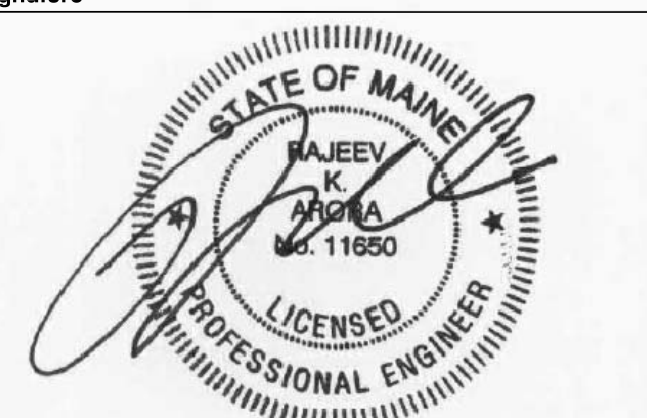
Gensler
 2020 K Street, Northwest
 Suite 200
 Washington DC 20006
 Telephone 202.721.5200
 Facsimile 202.872.8587

ARORA
 Solutions for Secure Environments
 Arora Engineers, Inc.
 61 Wilmington - West Chester
 Pike
 Suite # 100
 Chadds Ford, PA 19317
 T: (610) 459-7900
 F: (610) 459-7950

GENERAL NOTES

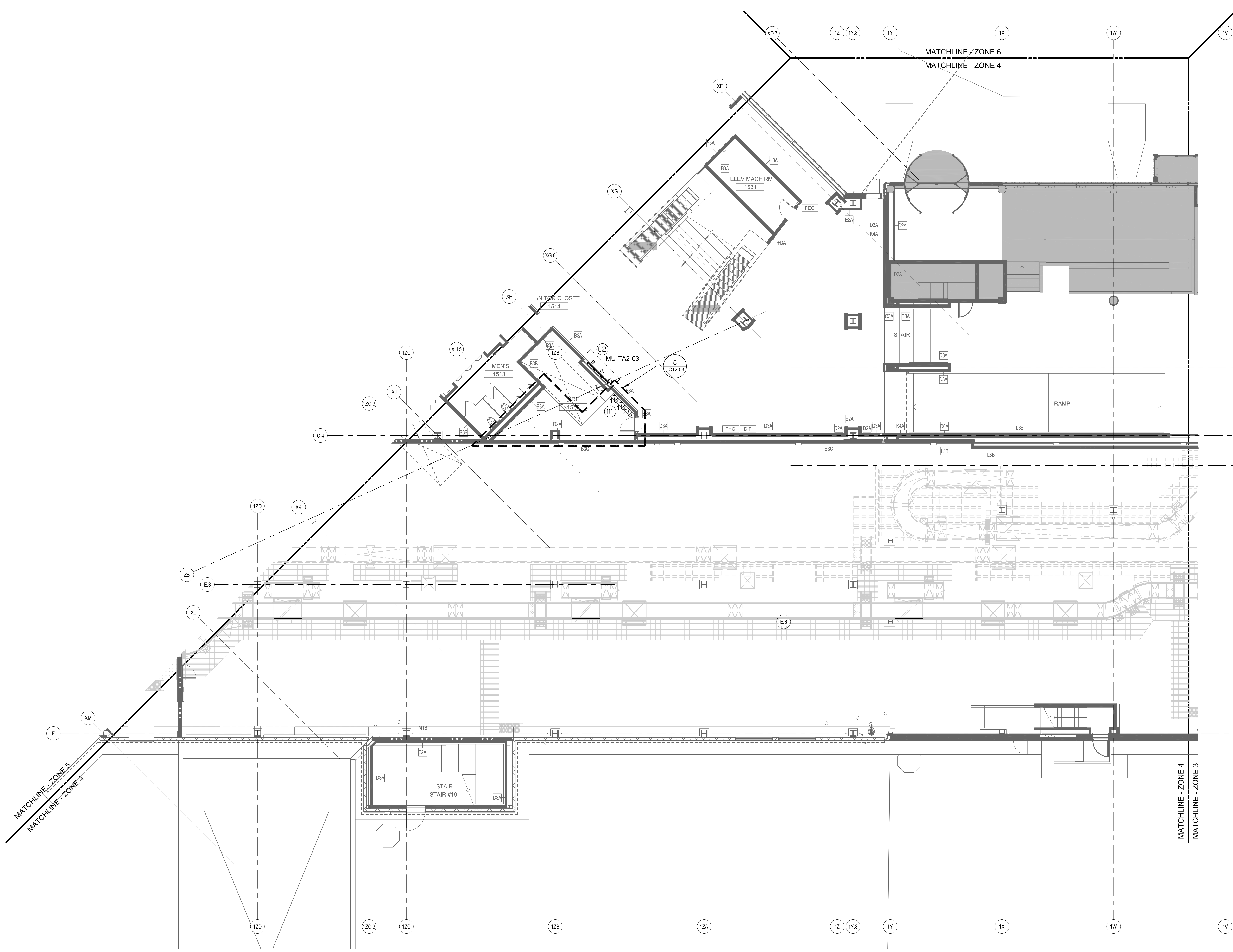
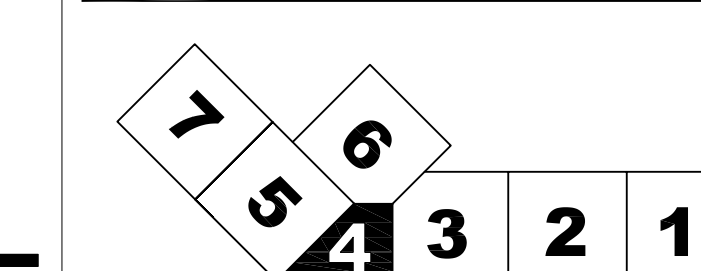
- A REFER TO DRAWING TC00.00 FOR GENERAL NOTES, REQUIREMENTS, AND DEMOLITION NOTES.
- B ALL CONDUITS FOR DATA SHALL BE RUN CONCEALED WHERE POSSIBLE OR IF EXPOSED, SHALL BE RUN PARALLEL AND PERPENDICULAR TO BUILDING LINES AND PAINTED TO MATCH. LOCATION OF NEW DATA OUTLETS SHALL BE INSTALLED AT NEW MONITOR LOCATIONS AS INDICATED ON THE DRAWINGS AND SCHEDULES. ALL NEW PENETRATIONS OF CONDUITS THROUGH WALLS AND FLOOR SLABS SHALL BE SLEEVED AND PROPERLY SEALED WITH AN APPROVED AND RATED FIRE STOPPING MATERIAL. CONTRACTOR SHALL REPLACE ANY CEILING TILES DAMAGED BY WORK OF THIS CONTRACT.
- C CONTRACTOR SHALL CORE DRILL 1/4" PILOT HOLE PRIOR TO CORE DRILLING. CONTRACTOR SHALL TAKE PRECAUTIONS AS TO PROTECT AREA BENEATH CORE DRILL AREA AND HAVE PERSONNEL AT THIS AREA IN ORDER TO CATCH CORE AND WATER THAT MAY ENTER AREA BELOW. CONTRACTOR SHALL CLEAN AREA AFTER INSTALLATION.
- D LOCATION OF DATA OUTLETS ARE FOR REPRESENTATION PURPOSES ONLY AND DO NOT DEPICT EXACT LOCATION. CONTRACTOR SHALL INSTALL DATA OUTLETS ADJACENT TO NEW MONITORS/SCREENS/DVC'S AS REQUIRED AND MUST BE APPROVED BY THE ENGINEER.
- E E.C. SHALL PROVIDE DETAILED SHOP DRAWINGS (SIGNED AND SEALED BY PROFESSIONAL ENGINEER LICENSED IN THE STATE THE WORK WILL COMMENCE) FOR SUPPLEMENTAL STRUCTURAL MOUNTING BRACKET ASSEMBLIES/SUPPORTS REQUIRED TO MOUNT MONITORS/SCREENS AT PRECAST TEE LOCATIONS AND ALL OTHER CEILING/OVERHEAD STRUCTURE MOUNTING LOCATIONS. REFER TO SPECIFICATION MANUAL FOR MORE INFORMATION.
- F PRIOR TO INSTALLATION OF NEW SCREENS/DISPLAYS/MONITORS AND FIDS BANKS, THE E.C. SHALL VERIFY EXACT LOCATIONS OF SAME WITH THE PWM AND THE ENGINEER. CONTRACTOR SHALL SCHEDULE COORDINATION WALK-THRU WITH PWM/ENGINEER AS REQUIRED.
- G CONDUIT PATHWAY ROUTES ARE SHOWN DIAGRAMMATICALLY. CONTRACTOR TO FIELD VERIFY THE EXACT ROUTE.
- H ALL COMMUNICATIONS CABLING, SHALL BE CONCEALED IN CONDUIT AND SIZED ACCORDINGLY NOT TO EXCEED THE 40% MAXIMUM FILL. SEE CONDUIT CAPACITY CHART ON DRAWING TC00.01.
- I ALL VOICE AND DATA CABLING SHALL TERMINATE IN THE MDF OR IDF ROOM AS INDICATED ON DRAWINGS TC12.05 AND TC12.06.
- J ADD AND SIZE JUNCTION BOXES AT CONDUIT INTERSECTIONS PER NEX 314 AND TIA/EIA STANDARDS FOR BEND RADIUS.

Issue	Date & Issue Description	By	Check
	10/26/09		
	100% ISSUED FOR PERMIT		

Seal/Signature

 Project Name
 PWM TERMINAL EXPANSION

Project Number
 CAD File Name
 MF02.02.04
 Description
 MUFIDS AND COMMON USE
 CONSTRUCTION PLAN - LEVEL 2 - ZONE 4
 Scale
 As Indicated

KEY PLAN



LEVEL 2 - ZONE 4
 SCALE: 1/8"=1'-0"