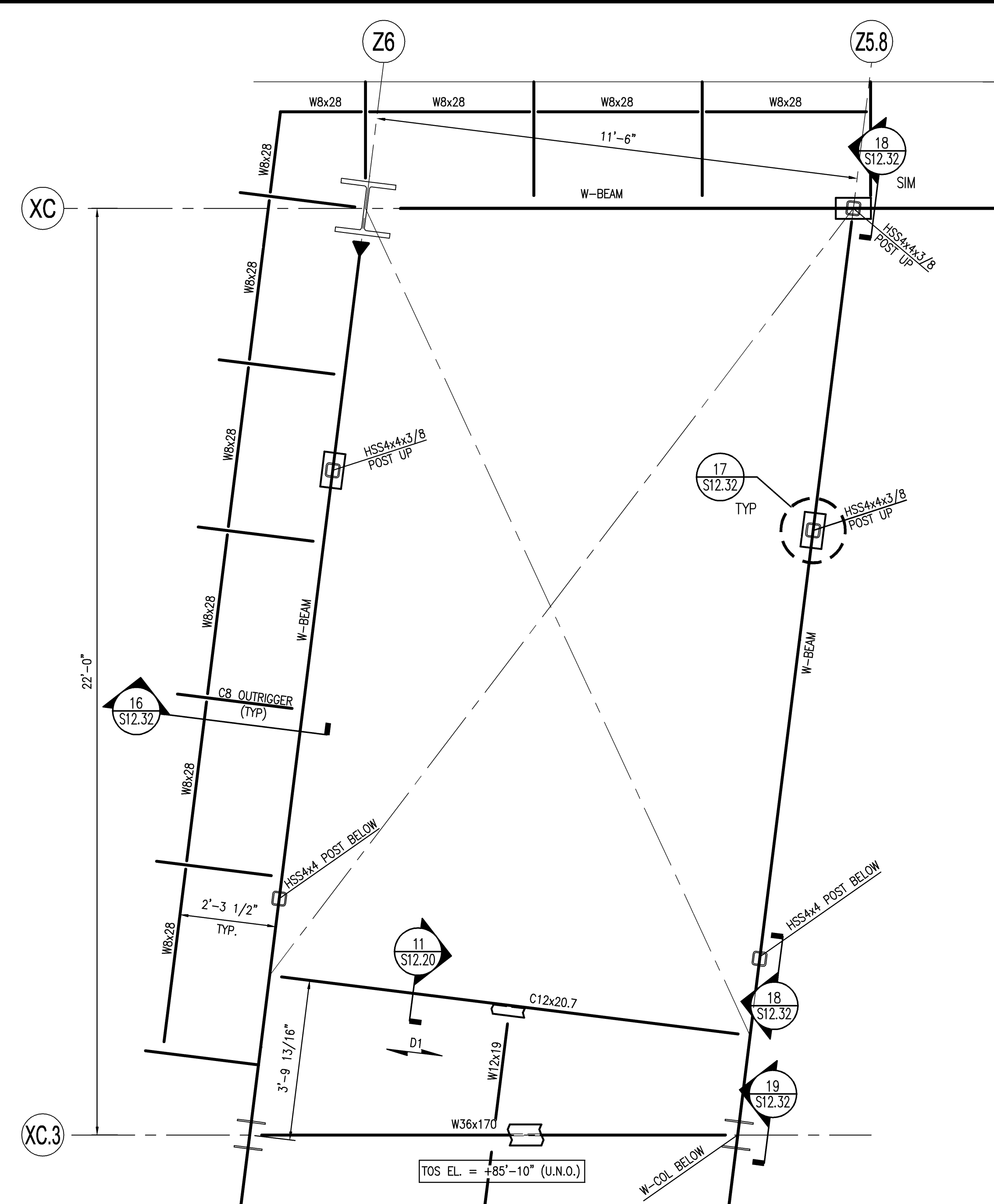
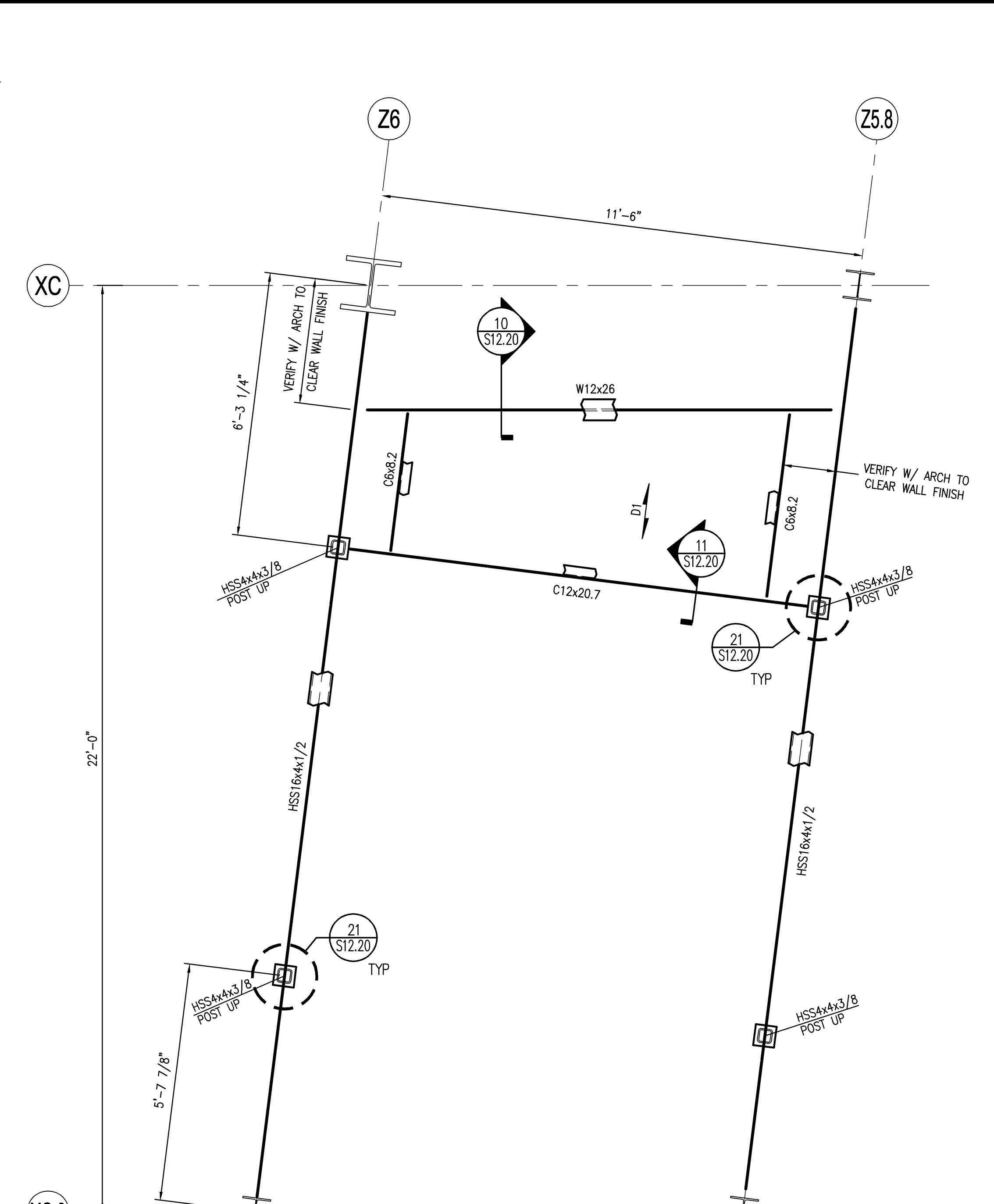


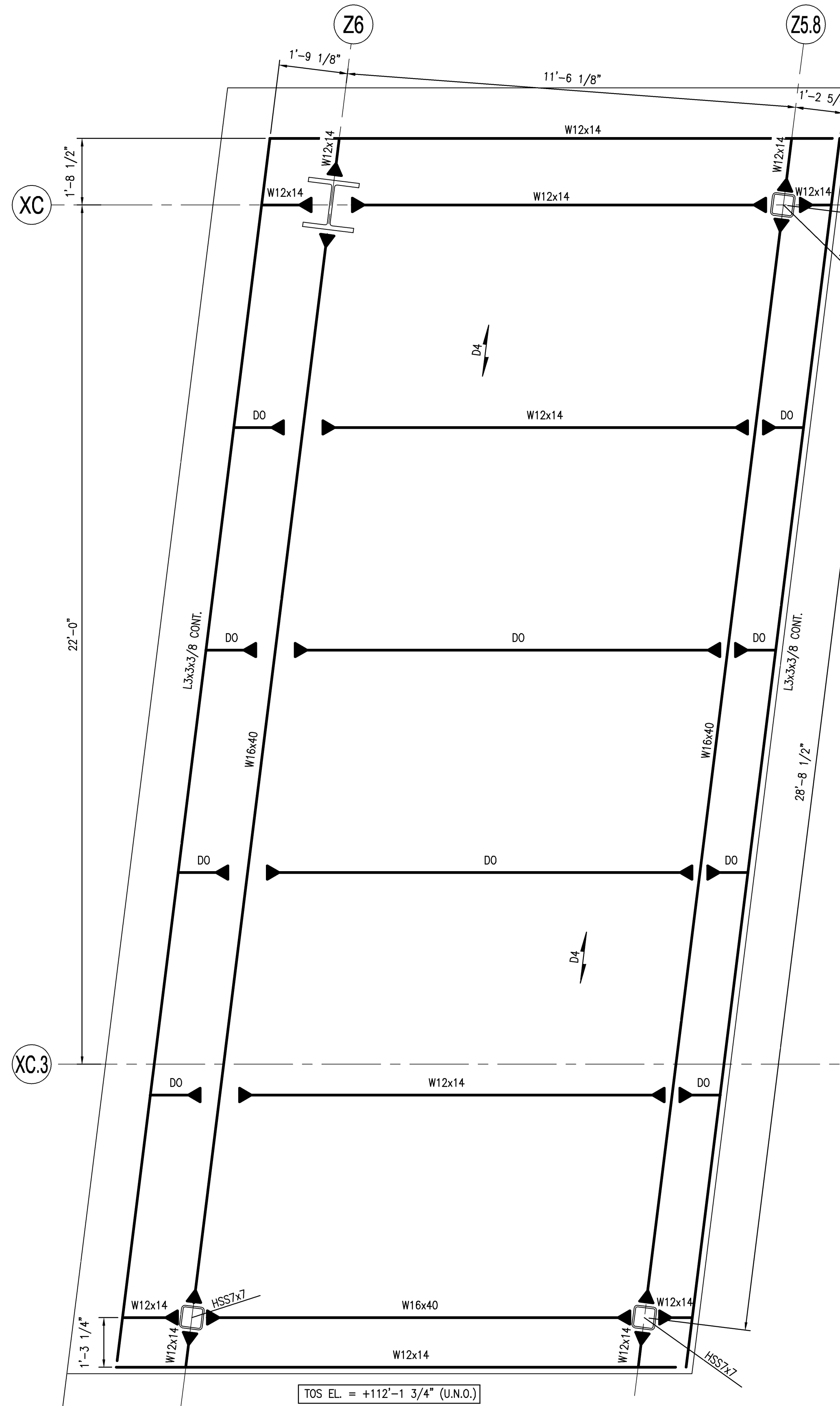
**ENLARGED FRAMING PLAN - ZONE 6**  
SCALE: 1/2" = 1'-0"



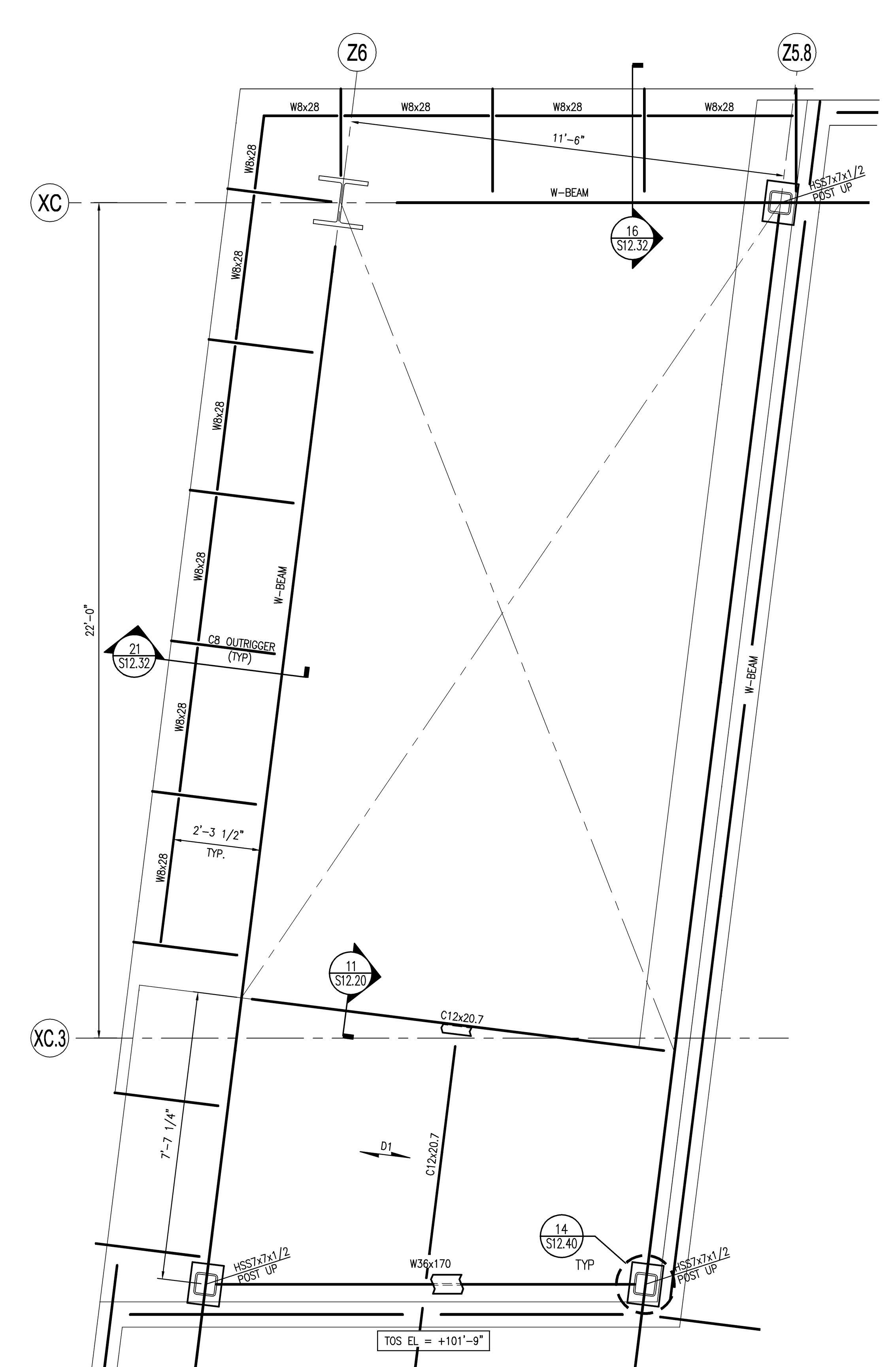
**ENLARGED FRAMING PLAN - LEVEL 4 - ZONE 6**  
SCALE: 1/2" = 1'-0"



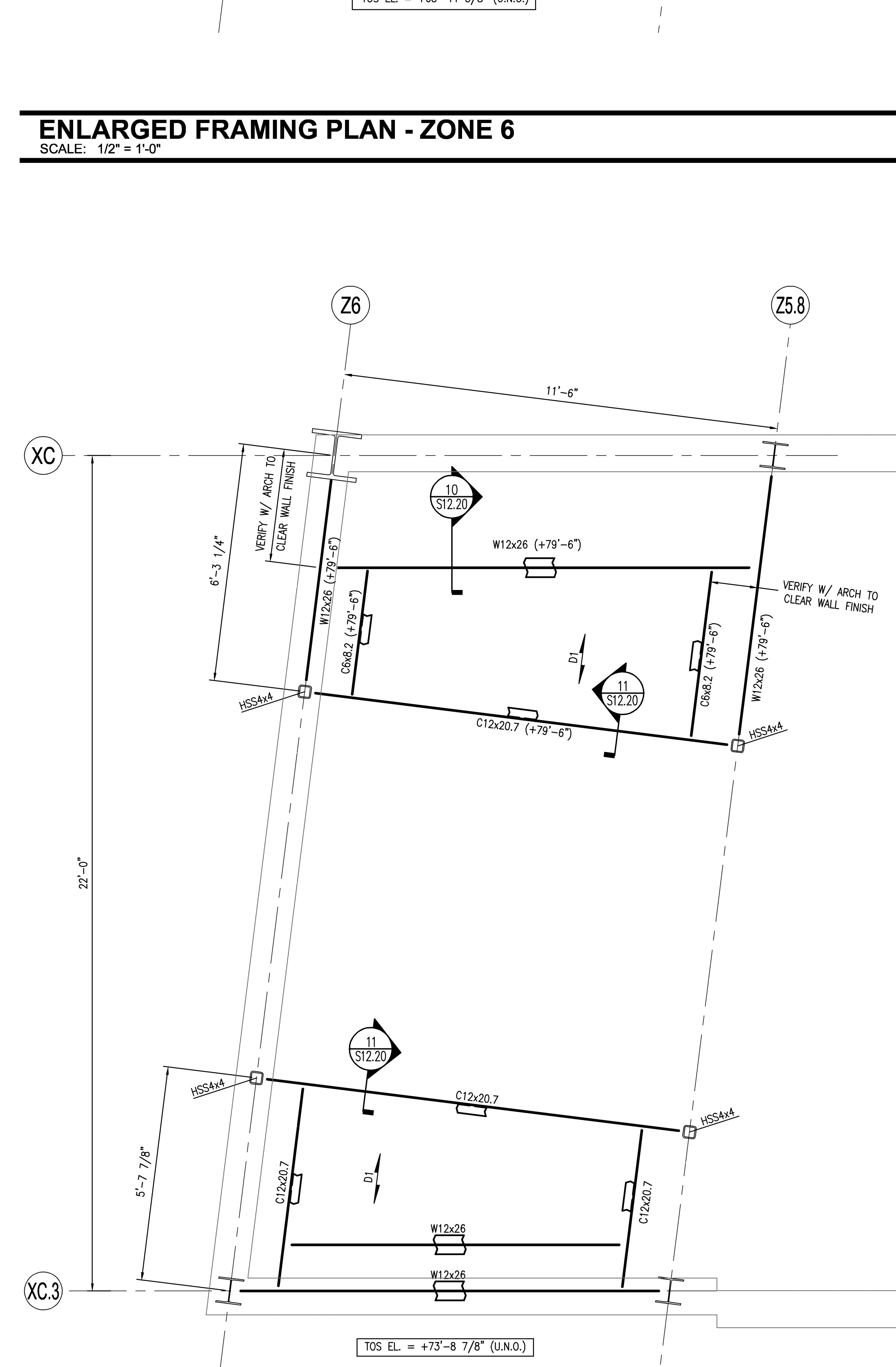
**ENLARGED FRAMING PLAN - ZONE 6**  
SCALE: 1/2" = 1'-0"



**ENLARGED FRAMING PLAN - ROOF - ZONE 6**  
SCALE: 1/2" = 1'-0"



**ENLARGED FRAMING PLAN - LEVEL 5 - ZONE 6**  
SCALE: 1/2" = 1'-0"



**ENLARGED FRAMING PLAN - LEVEL 3 - ZONE 6**  
SCALE: 1/2" = 1'-0"

**SHEET NOTES**

E00 INDICATES EDGE OF DECK

D1 DECK TO BE 6" LIGHT WEIGHT CONCRETE SLAB ON 18 GAGE 2" THICK COMPOSITE METAL DECK REINFORCED WITH 6x6-W2.1W2.1 W/ \_\_\_\_\_ DIAMETER WELD PATTERN AND \_\_\_\_\_ SCREWS SIDE LAP CONNECTION PER SPAN. SEE GENERAL NOTES.

D4 DECK TO BE 5" LIGHT WEIGHT CONCRETE SLAB ON 18 GAGE 2" THICK COMPOSITE METAL DECK REINFORCED WITH 6x6-W2.1W2.1 W/ \_\_\_\_\_ DIAMETER WELD PATTERN AND \_\_\_\_\_ SCREWS SIDE LAP CONNECTION PER SPAN. SEE GENERAL NOTES.

INDICATES LOCATION OF MOMENT CONNECTION CAPABLE OF DEVELOPING THE FULL MOMENT CAPACITY OF THE FLEXURAL ELEMENT.

12K (EXAMPLE) INDICATES MEMBER END REACTION IN KIPS.

**GENERAL NOTES**

- GENERAL CONTRACTOR TO CONFIRM ALL DIMENSIONS AND ELEVATIONS WITH ARCHITECTURAL DRAWINGS PRIOR TO START OF WORK.
- FINISHED FLOOR ELEVATION = SEE ARCH. TOP OF STEEL ELEVATION = SEE PLANS UNLESS NOTED OTHERWISE (TOS).
- FRAMING NOT SPECIFICALLY DIMENSIONED SHALL BE ASSUMED EQUALLY SPACED.
- SEE SHEET S00.00 FOR GENERAL STRUCTURAL NOTES AND DESIGN LOADS.
- ALL FLOOR FRAMING MEMBERS SHALL BE PROPERLY BRACED BY THE CONTRACTOR UNTIL THE STRUCTURAL FLOOR DIAPHRAGM HAS BEEN COMPLETELY CONSTRUCTED.
- CONTRACTOR SHALL COORDINATE ALL FLOOR OPENINGS WITH MECHANICAL DRAWINGS. ALL FLOOR OPENINGS LARGER THAN 10" DIAMETER OR SQUARE SHALL BE SUPPORTED ON FRAME (SEE SHEET S12.04). ANY OPENING NOT SHOWN ON THIS DRAWING SHALL NOT BE CONSTRUCTED WITHOUT THE ARCHITECT'S APPROVAL.
- METAL STUD GAGES SHALL BE SELECTED BASED ON THE STUD DEPTHS SHOWN ON THE ARCHITECTURAL PLANS. WIND LOAD = 35 PSF AND MAXIMUM DEFLECTION OF H/360 OR 0.3" @ BRICK VENEER, H/360 FOR PANEL WALL. - VERTICAL DEFLECTION CLIPS FOR ALL STUDS ATTACHING TO BEAMS.

**KEY PLAN**

Scale: 1/8" = 1'-0"

Ref. North

**Portland International Jetport**  
1001 Westbrook Street  
Portland, Maine 04102

**Gensler**

**oest ASSOCIATES, INC.**  
343 Gopham Road, South Portland, ME 04106 P (207) 761-7700 F (207) 774-2464 www.oest.com  
engineers • architects • surveyors • construction managers

2020 K Street, NW  
Suite 200  
Washington, DC 20006  
Telephone 202.721.5200  
Facsimile 202.872.8587

Issue	Date & Issue Description	By	Check
01	01/23/09	JDE	
02	10/26/09	JDE	

Project Name: PWM Terminal Enhancement

Project Number: 09.0396.000

CAD File Name: T:\3330101\SHEETS\S08.01.DWG

Description: ENLARGED FRAMING PLANS - ZONE 6

Scale: 1/8" = 1'-0"

**S08.01**

©2009 Gensler