

**SHEET NOTES**

01 SEE ARCHITECTURAL DRAWINGS FOR FIXTURE MOUNTING HEIGHTS.

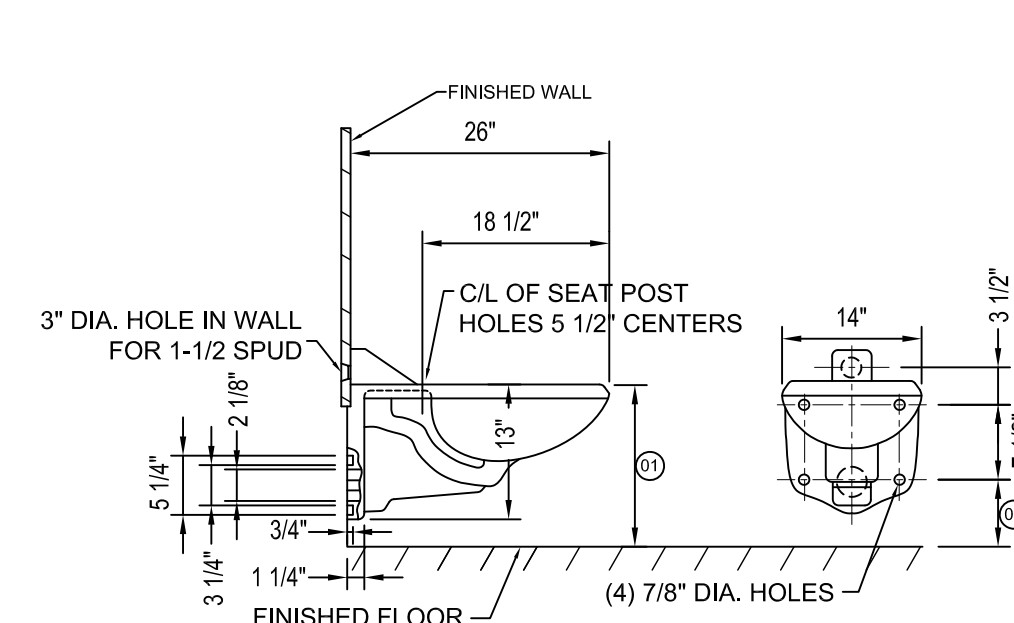
**Portland International Jetport**

1001 Westbrook Street  
Portland, Maine 04102

**Gensler**

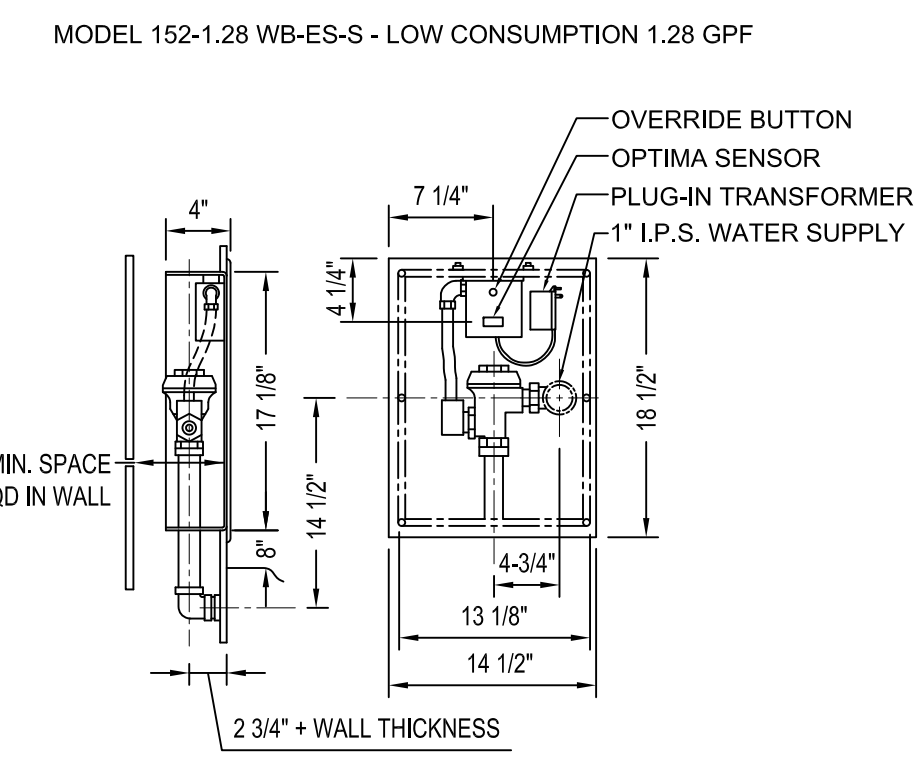
2020 K Street, NW  
Suite 200  
Washington, DC 20006  
Telephone 202.721.5200  
Facsimile 202.872.8587

**oest ASSOCIATES, INC.**  
360 Graham Road, South Portland, ME 04106 P: (207) 741-1770 F: (207) 774-2461 www.oest.com  
engineers • architects • surveyors • construction managers

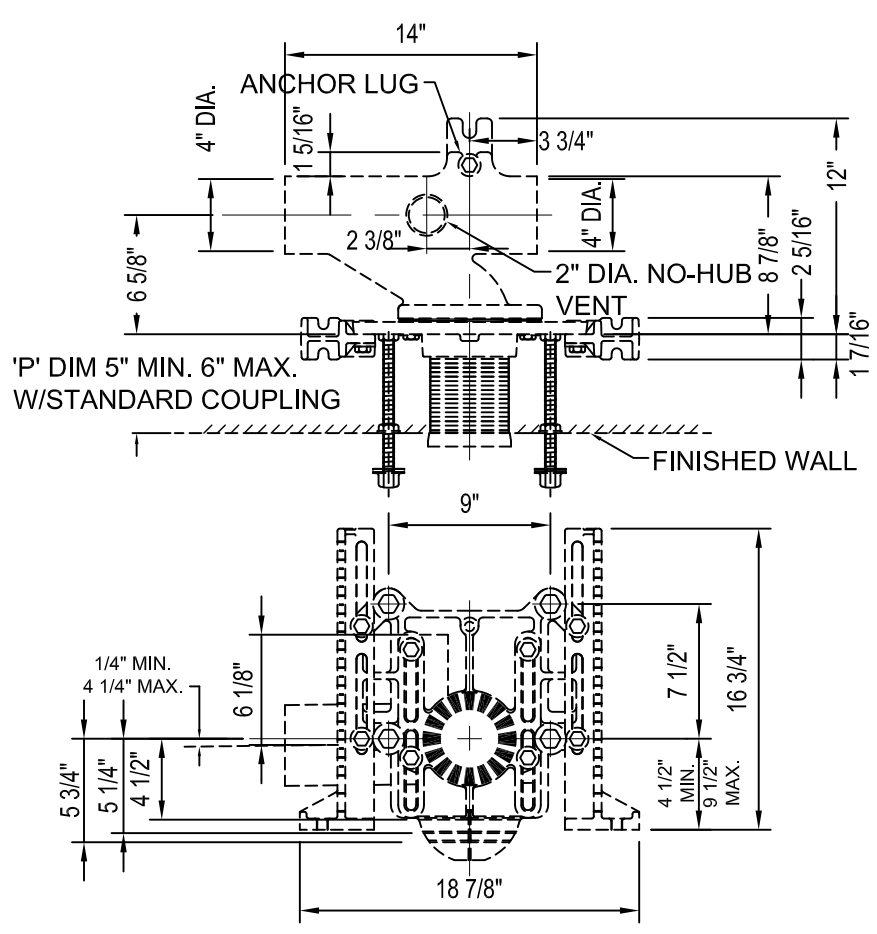


NOTE:  
TOILET DESIGNED TO MEET ADA ACCESSIBILITY STANDARDS WHEN TOP OF SEAT HEIGHT SET AT 17" TO 19" FROM FINISHED FLOOR.

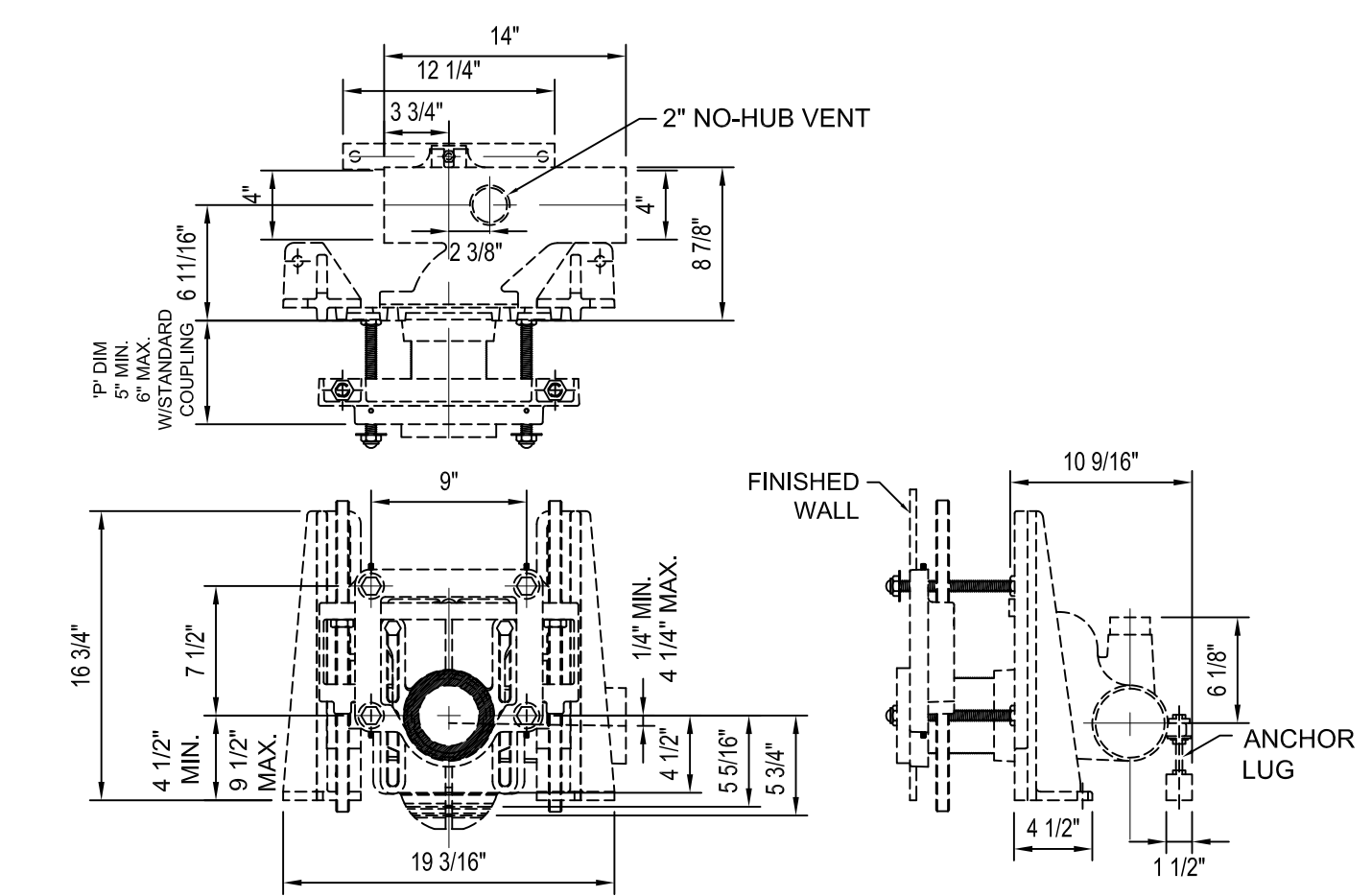
**WATER CLOSET**



**1.28 GPF FLUSHOMETER**



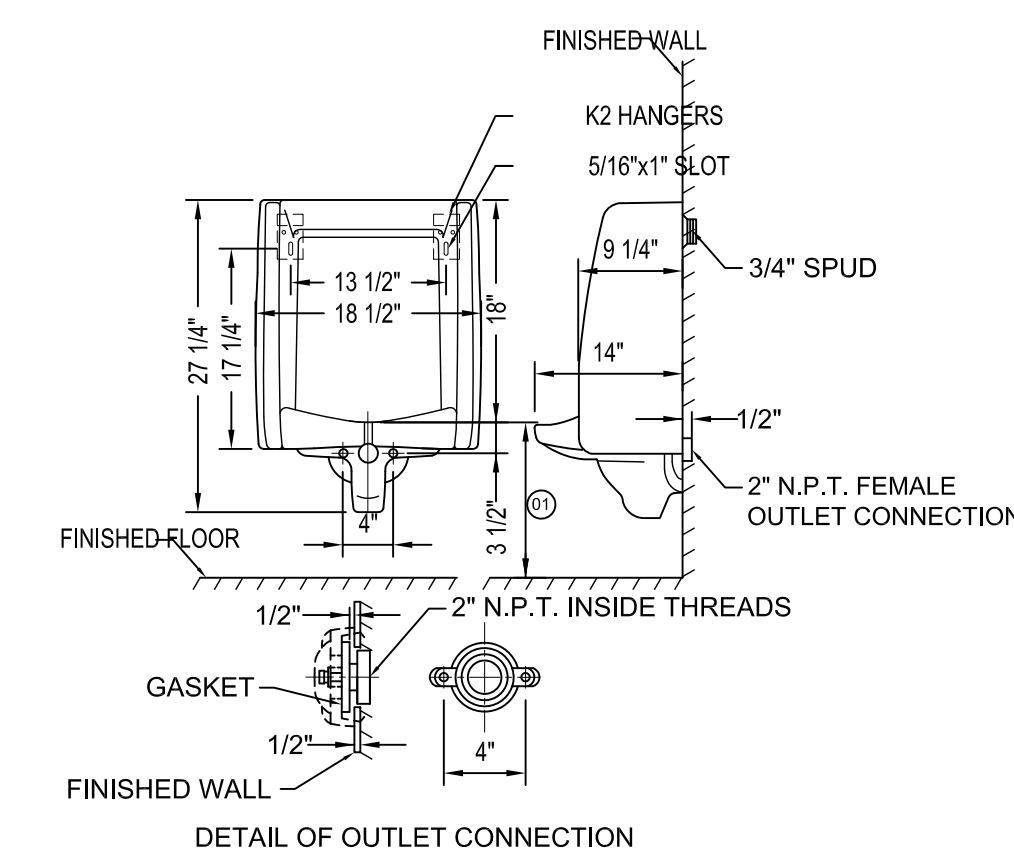
**P-1  
ADJUSTABLE HORIZONTAL  
SIPHON JET NO-HUB**



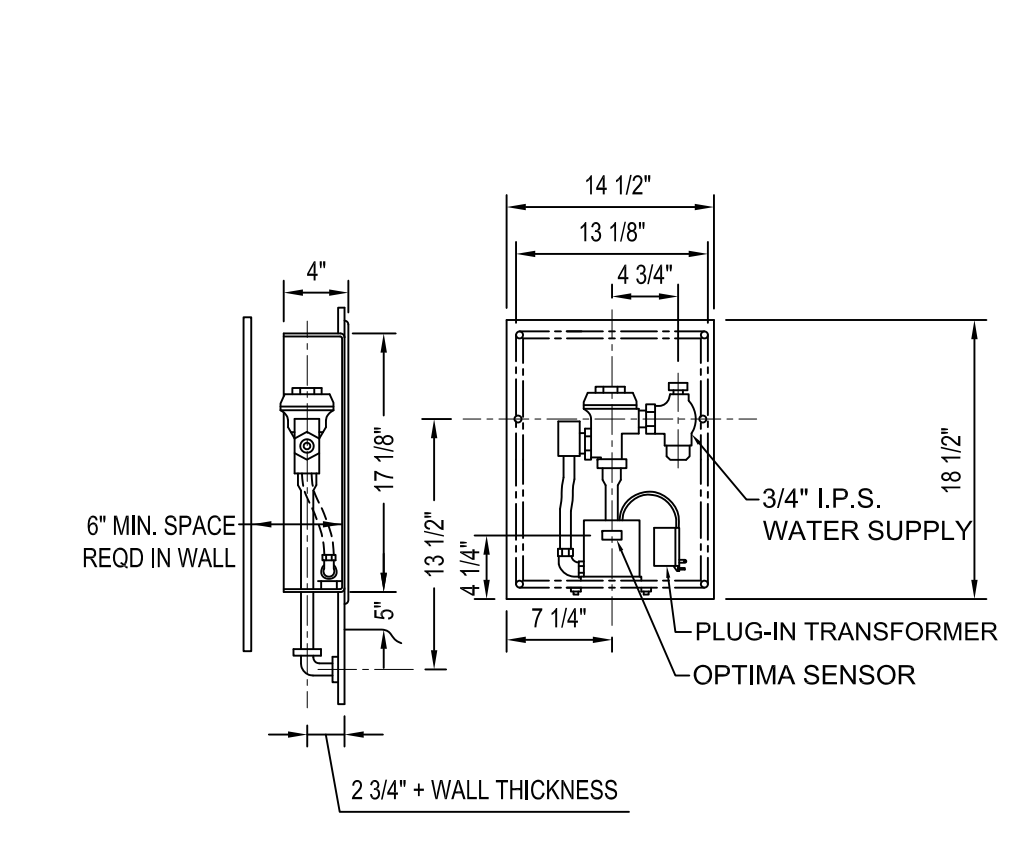
**P-1A  
ADJUSTABLE HORIZONTAL BARIATRIC  
SIPHON JET NO-HUB**

**DETAIL - P-1 & P-1A**  
SCALE: NOT TO SCALE

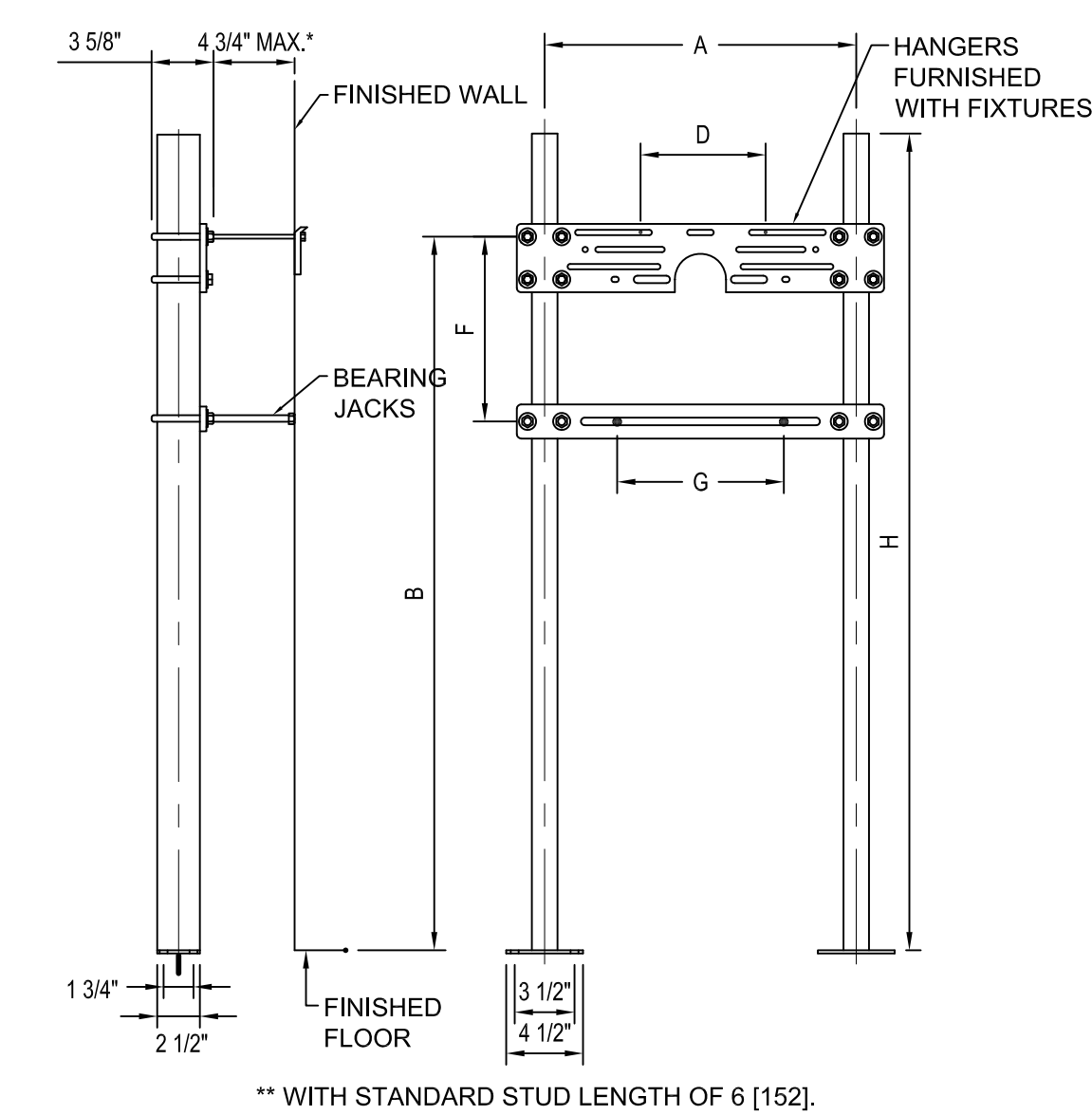
**1**



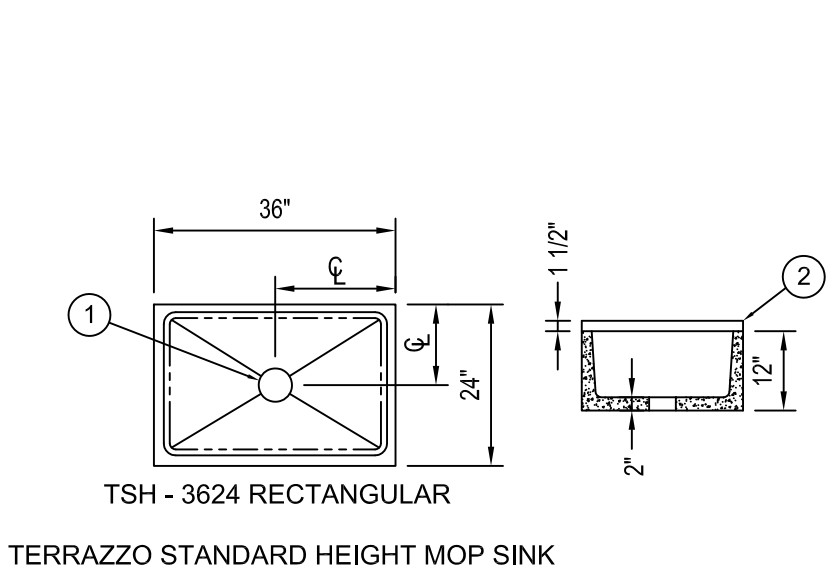
**0.5 GPF HIGH EFFICIENCY URINAL**



**0.5 GPF FLUSHOMETER**

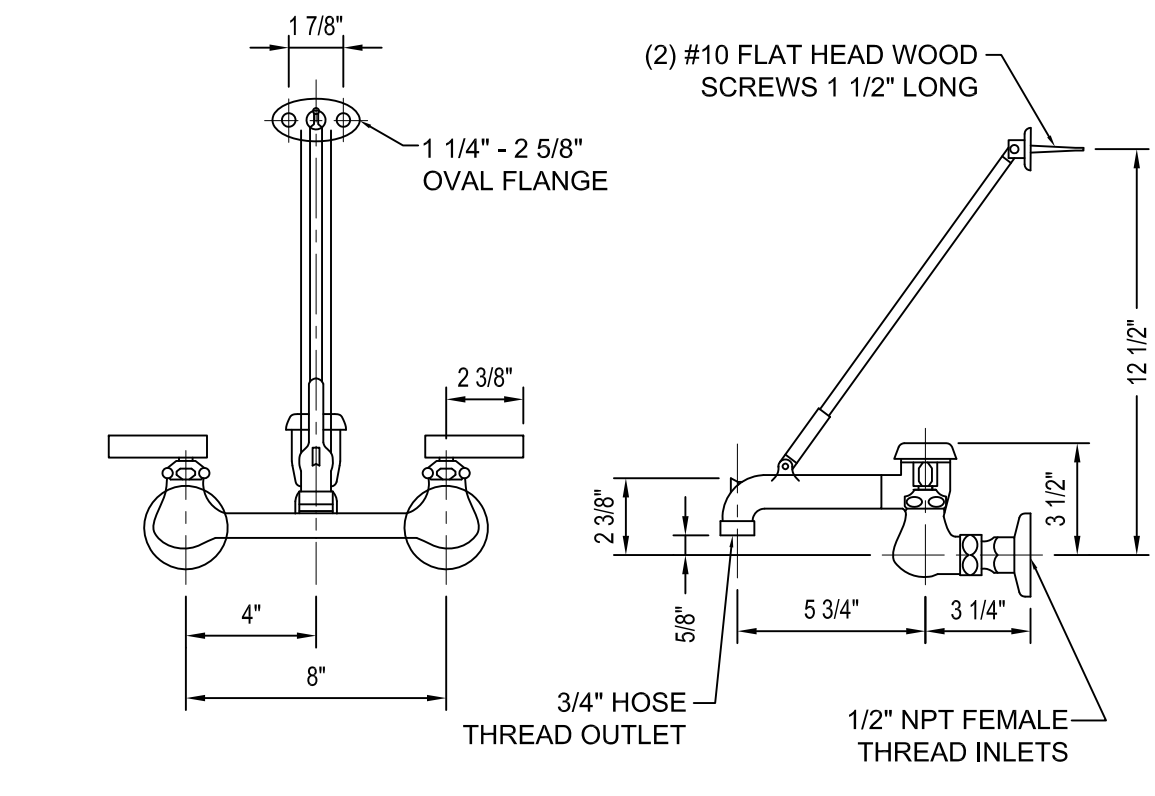


**PLATE TYPE SYSTEM  
WITH BEARING PLATE**



NOTES:  
1. INTEGRAL DRAIN WITH REMOVABLE GRID STRAINER. DRAIN PROVIDES INSIDE CAULK CONNECTION TO 3" PIPE.  
2. TF TILING FLANGE. SHOWN FOR REFERENCE ONLY.

**MOP SINK**



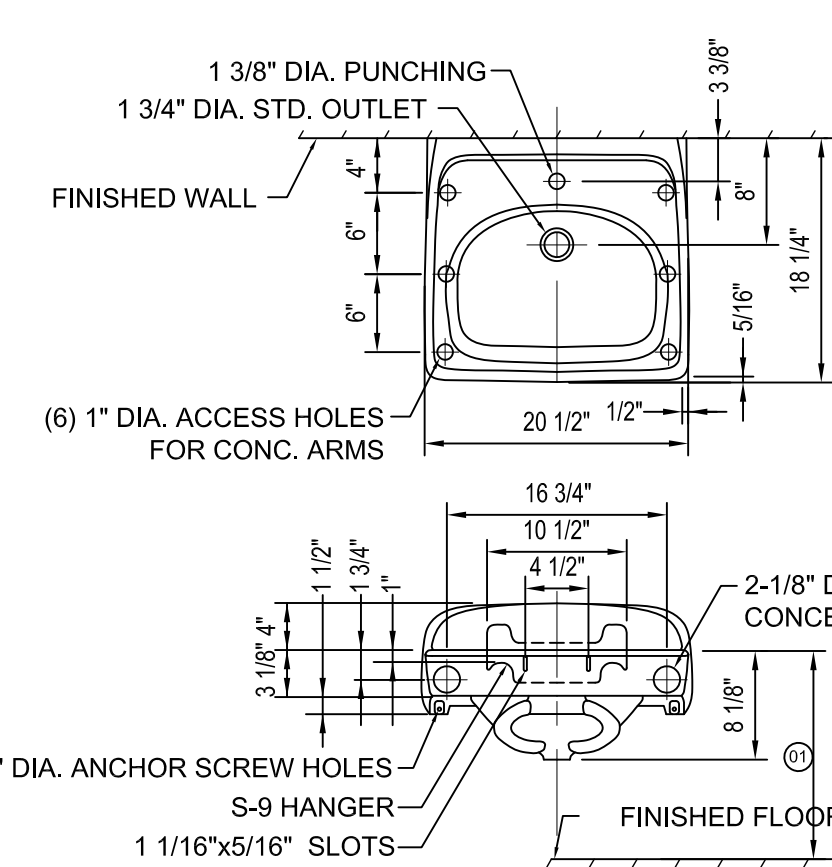
**MOP SINK FAUCET**

**DETAIL - P-2 & P-2A**  
SCALE: NOT TO SCALE

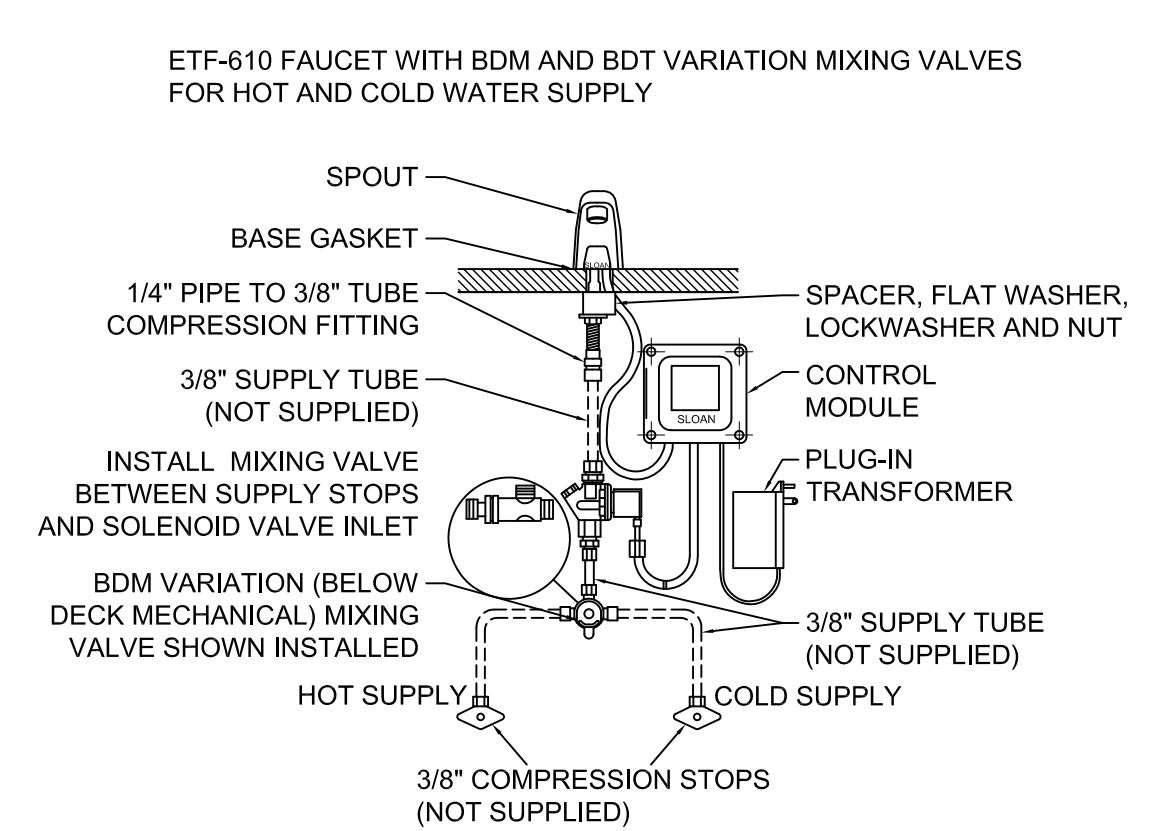
**2**

**DETAIL - P-4**  
SCALE: NOT TO SCALE

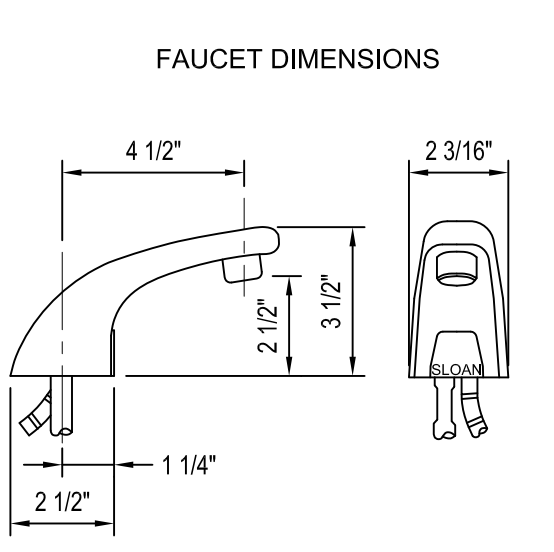
**3**



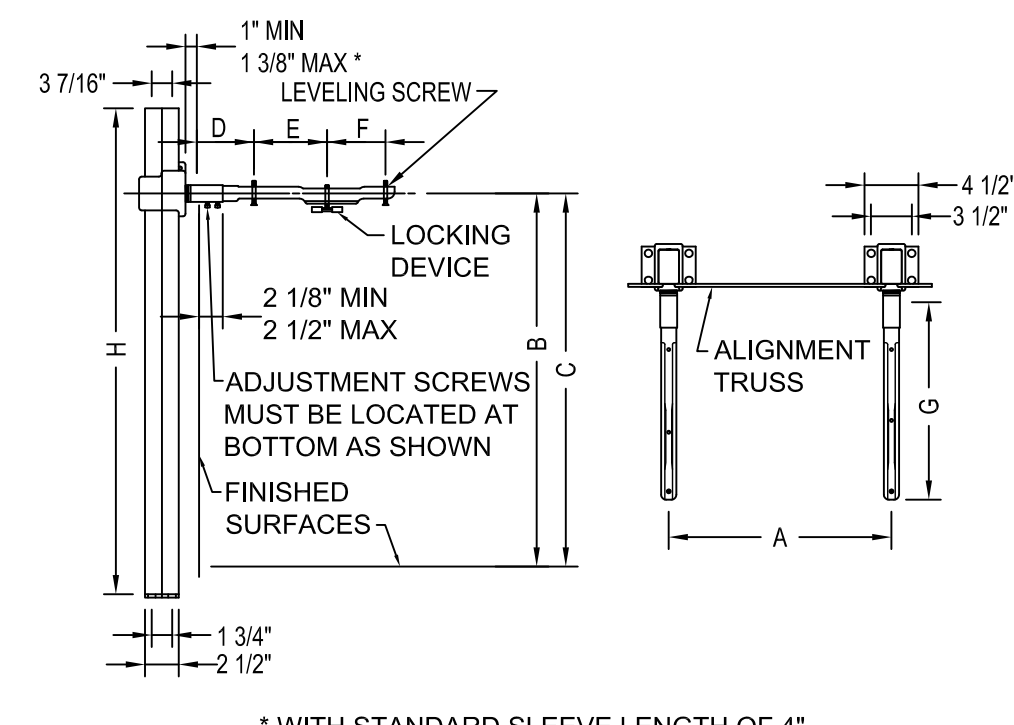
**WALL-HUNG LAVATORY**



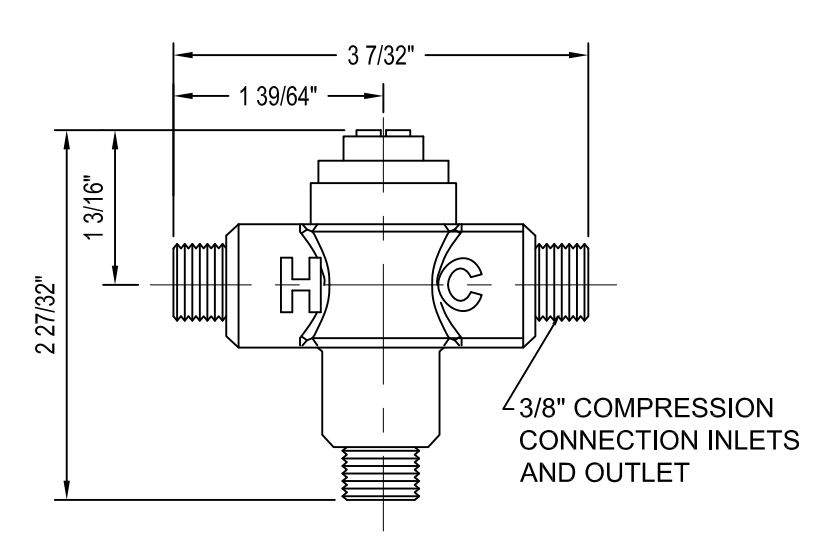
**PIPING ROUGH IN**



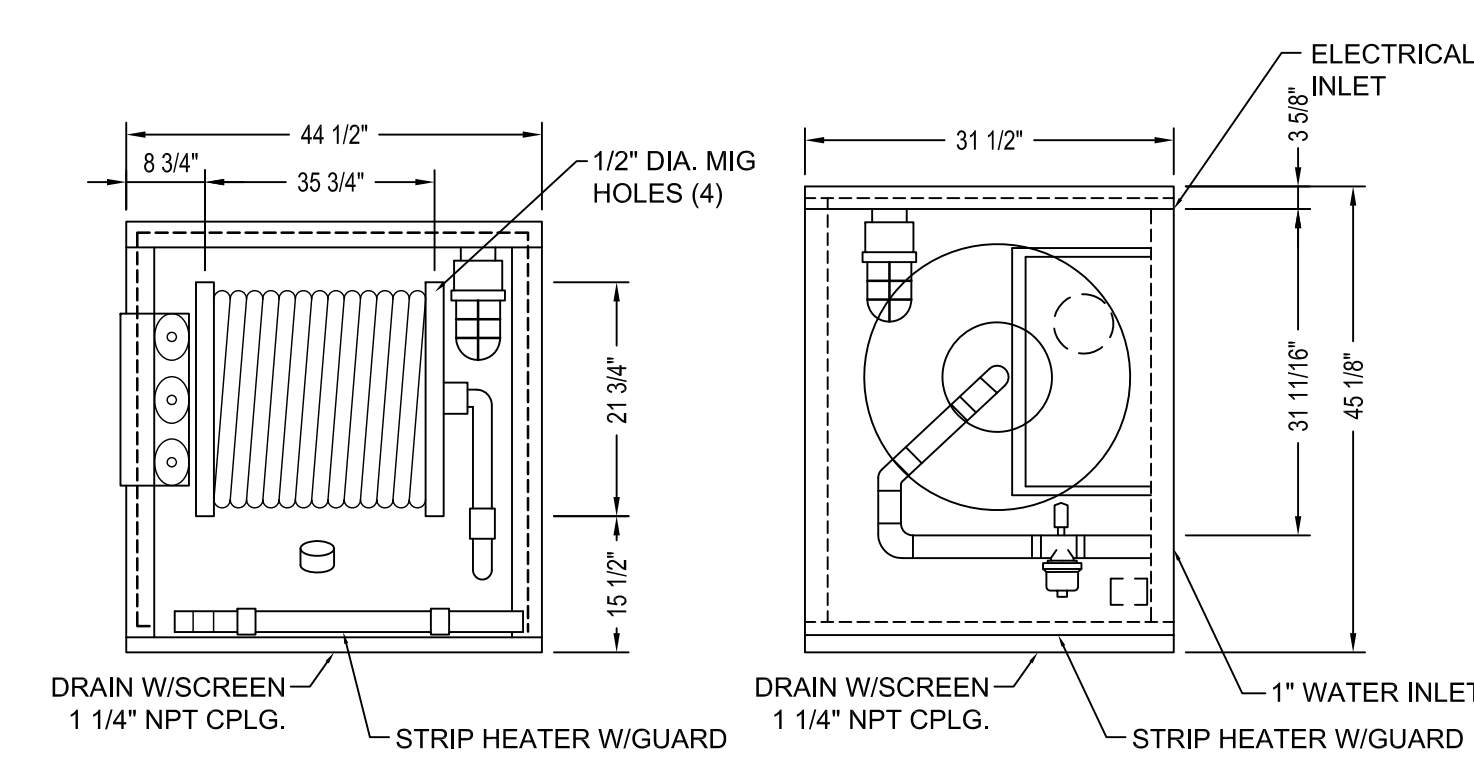
**ELECTRONIC HAND  
WASHING FAUCET**



**CONCEALED ARM CARRIER**



**THERMOSTATIC  
TEMPERING VALVE**



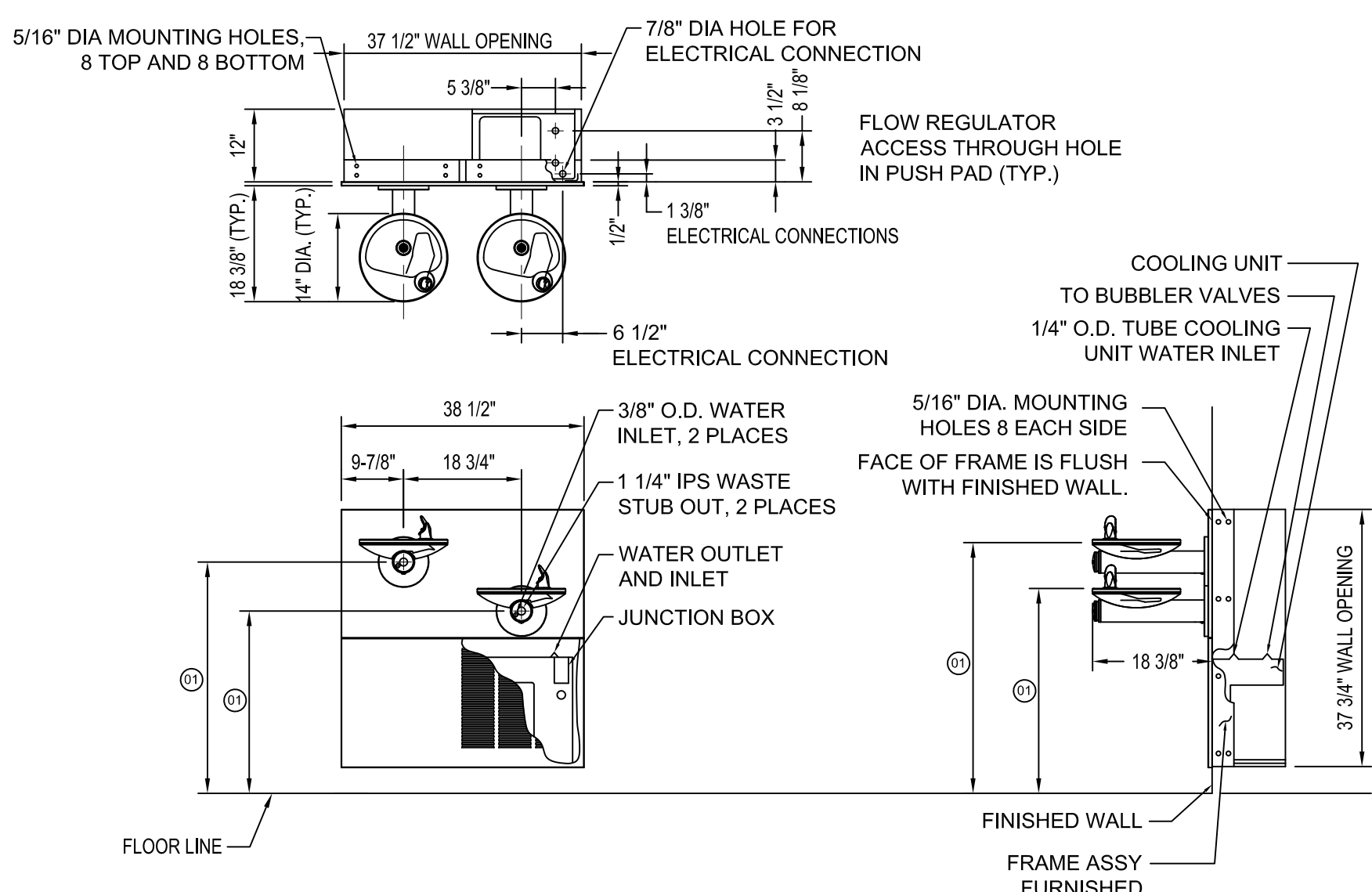
**POTABLE WATER HOSE REEL**

**DETAIL - P-3B**  
SCALE: NOT TO SCALE

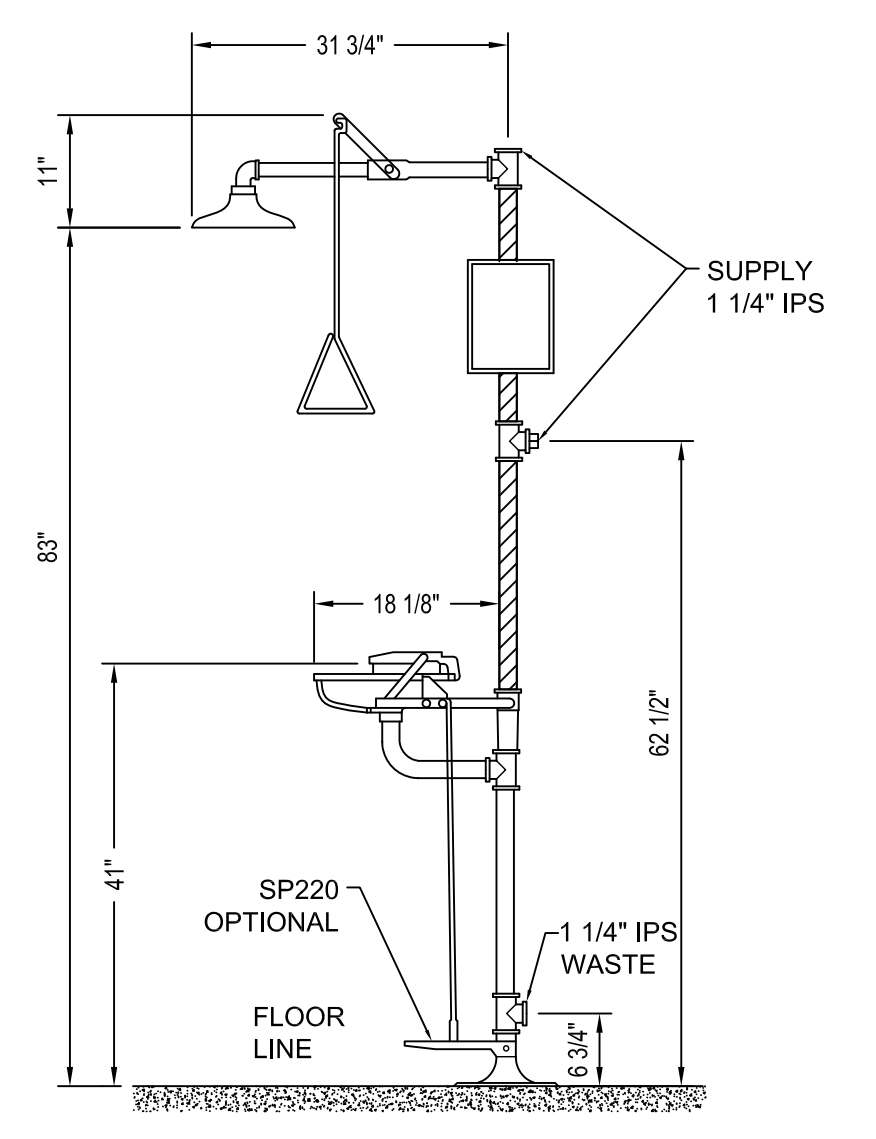
**4**

**DETAIL - HR-1**  
SCALE: NOT TO SCALE

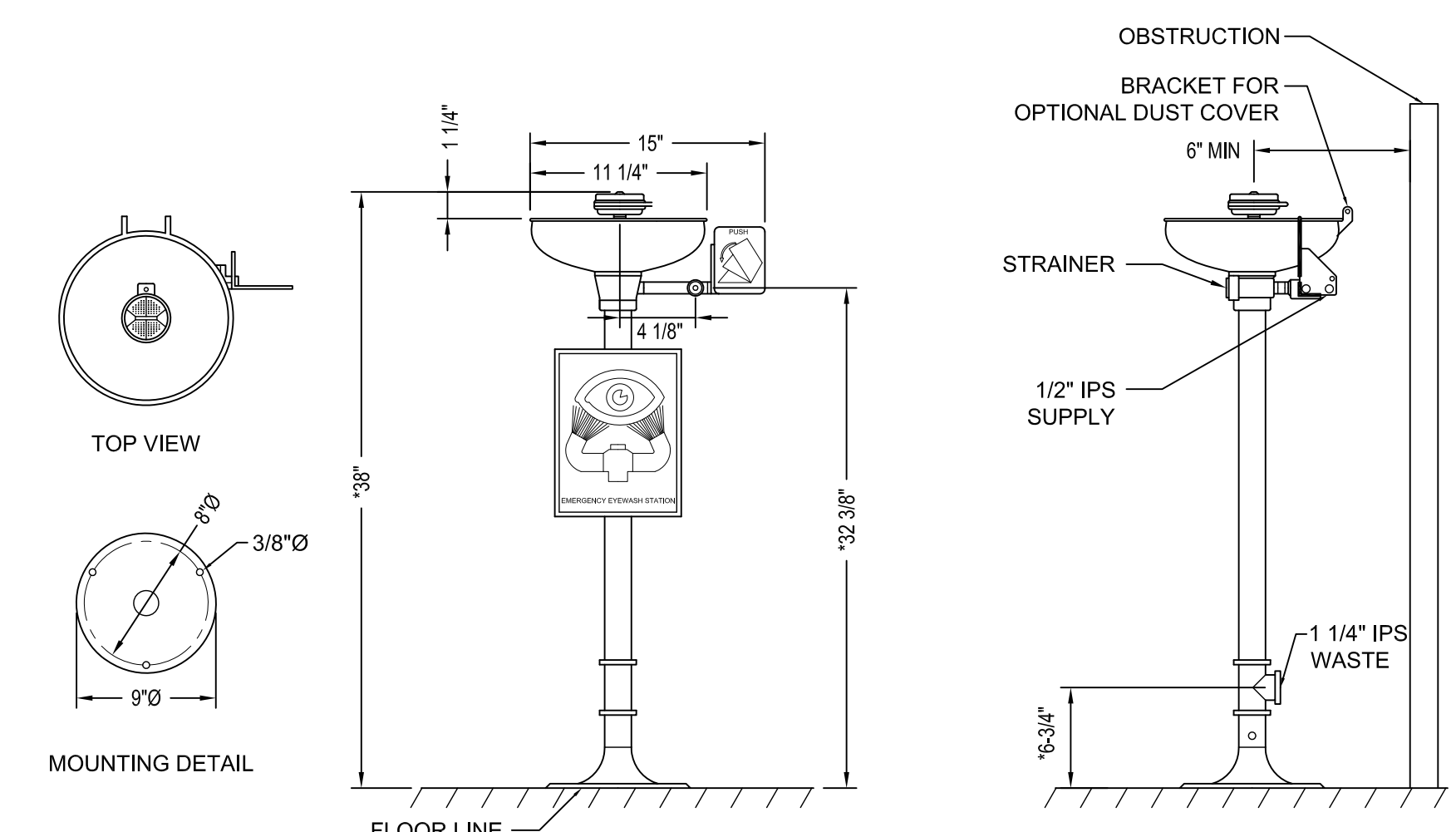
**5**



**BI-LEVEL WATER COOLER**



**P-6  
COMBINATION UNIT**



**P-6A  
EYE/FACE WASH**

**DETAIL - P-5**  
SCALE: NOT TO SCALE

**6**

**DETAIL - P-6 & P-6A**  
SCALE: NOT TO SCALE

**7**

**GENERAL NOTES**

A SEE SHEET P00.00 FOR LEGEND AND GENERAL NOTES.

Issue	Date & Issue Description	By	Check
01	12/03/08	KLM	JS
02	01/23/09	CM	JS
02	10/26/09	PWZ	JS

Project Name  
PJM Terminal Enhancement

Project Number  
09-6395-000

CAD File Name  
T:\6330\01\Sheets\P12.21.dwg

Description  
PLUMBING DETAILS

Scale  
NOT TO SCALE

Signature: [Handwritten Signature]

Date: 10/26/09

**P12.21**

©2009 Gensler