

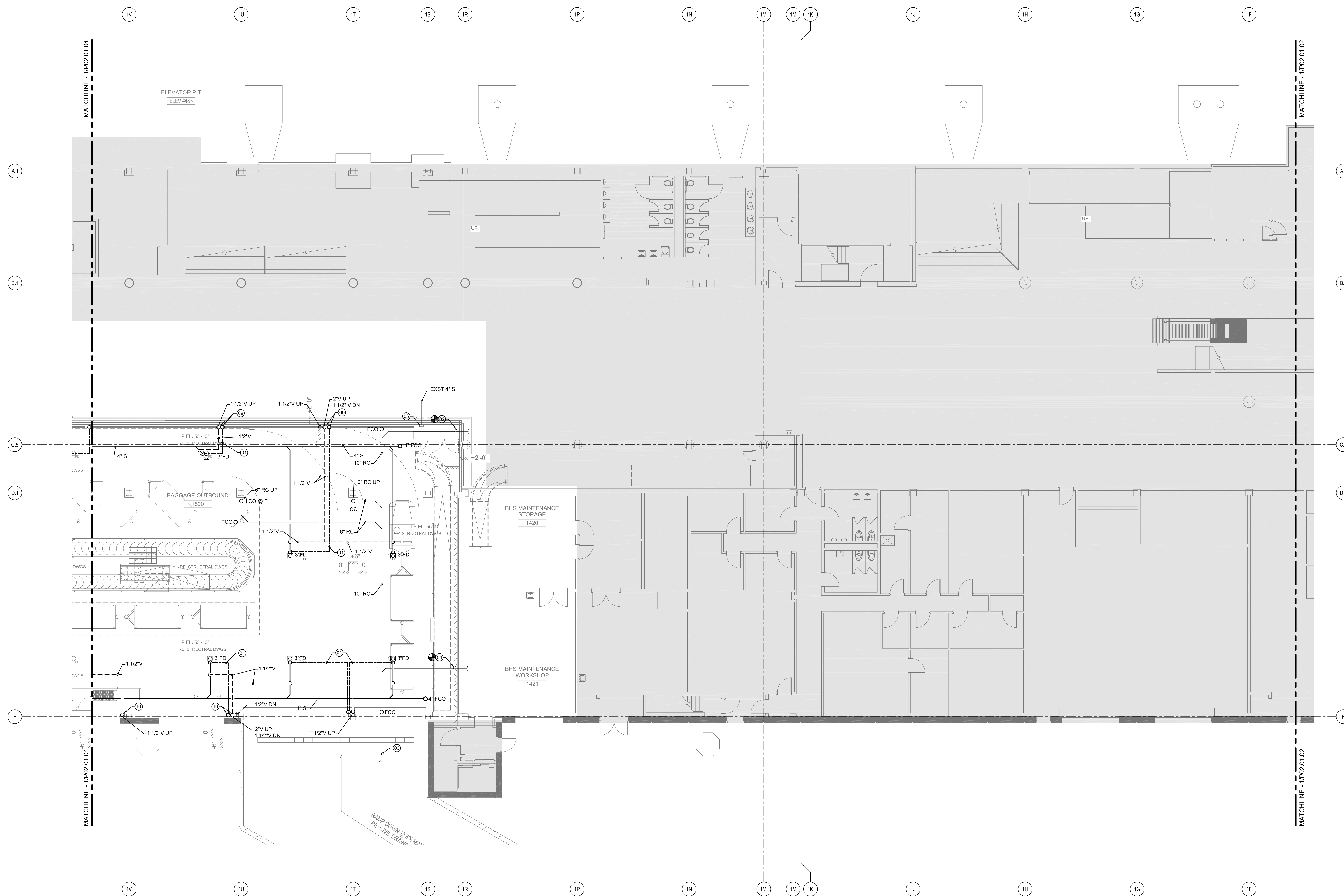
SHEET NOTES

- 01 1/2" PEX TUBING FROM TRAP PRIMER BELOW FL TO TRAP.
- 02 CONNECT TO EXST 10" RC.
- 03 SEE C02.02 FOR CONTINUATION.
- 04 CONNECT TO EXST 4" DRAIN.
- 05 CONNECT TO EXST 6" RC.
- 06 PROVIDE WCO ON EXST 4" S.
- 07 NOT USED.
- 08 NOT USED.
- 09 RUN 1/2" PEX TRAP PRIMER LINE ADJACENT TO C.I. VENT LINE TIGHT TO FOUNDATION WALL. PROVIDE GUARD AROUND BOTH LINES FROM FLOOR LEVEL TO 6'-0" AFF. REFER TO DETAIL 4 ON SHEET P12.23.
- 10 RUN PIPING ON SIDES OF COLUMN. KEEP FACE OF COLUMN CLEAR FOR INSTALLATION OF SECURITY & ALARM EQUIPMENT & APPARATUS.

Portland International Jetport
 1001 Westbrook Street
 Portland, Maine 04102

Gensler
 2020 K Street, NW
 Suite 200
 Washington, DC 20006
 Telephone 202.721.5200
 Facsimile 202.872.8587

nest ASSOCIATES, INC.
 363 Goshen Road, South Portland, ME 04106 P (207) 741-1770 F (207) 774-2461 www.nest.com
 engineers • architects • surveyors • construction managers

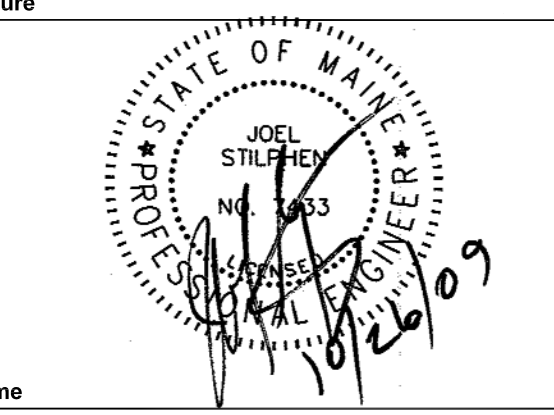


GENERAL NOTES

A SEE SHEET P00.00 FOR LEGEND AND GENERAL NOTES.

Issue	Date & Issue Description	By	Check
01	12/03/08	KLM	JS
02	01/23/09	CM	JS
02	10/26/09	PWZ	JS

SeedSignature



Project Name
 PWM Terminal Enhancement

Project Number
 09-6395-000

CAD File Name
 T:\6330\101\Sheets\P02.01.03.dwg

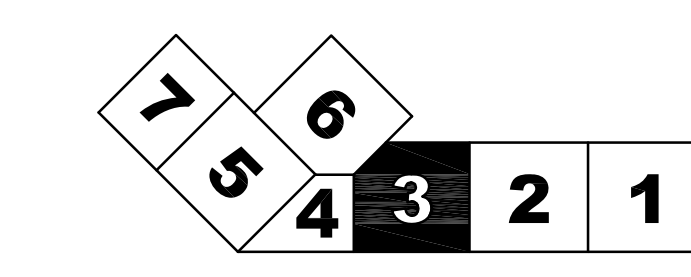
Description
 PLUMBING PLAN - LEVEL 1 - ZONE 3

Scale
 1/8" = 1'-0"

P02.01.03

©2009 Gensler

KEY PLAN



PLUMBING PLAN - LEVEL 1 - ZONE 3

SCALE: 1/8" = 1'-0"