

SHEET NOTES

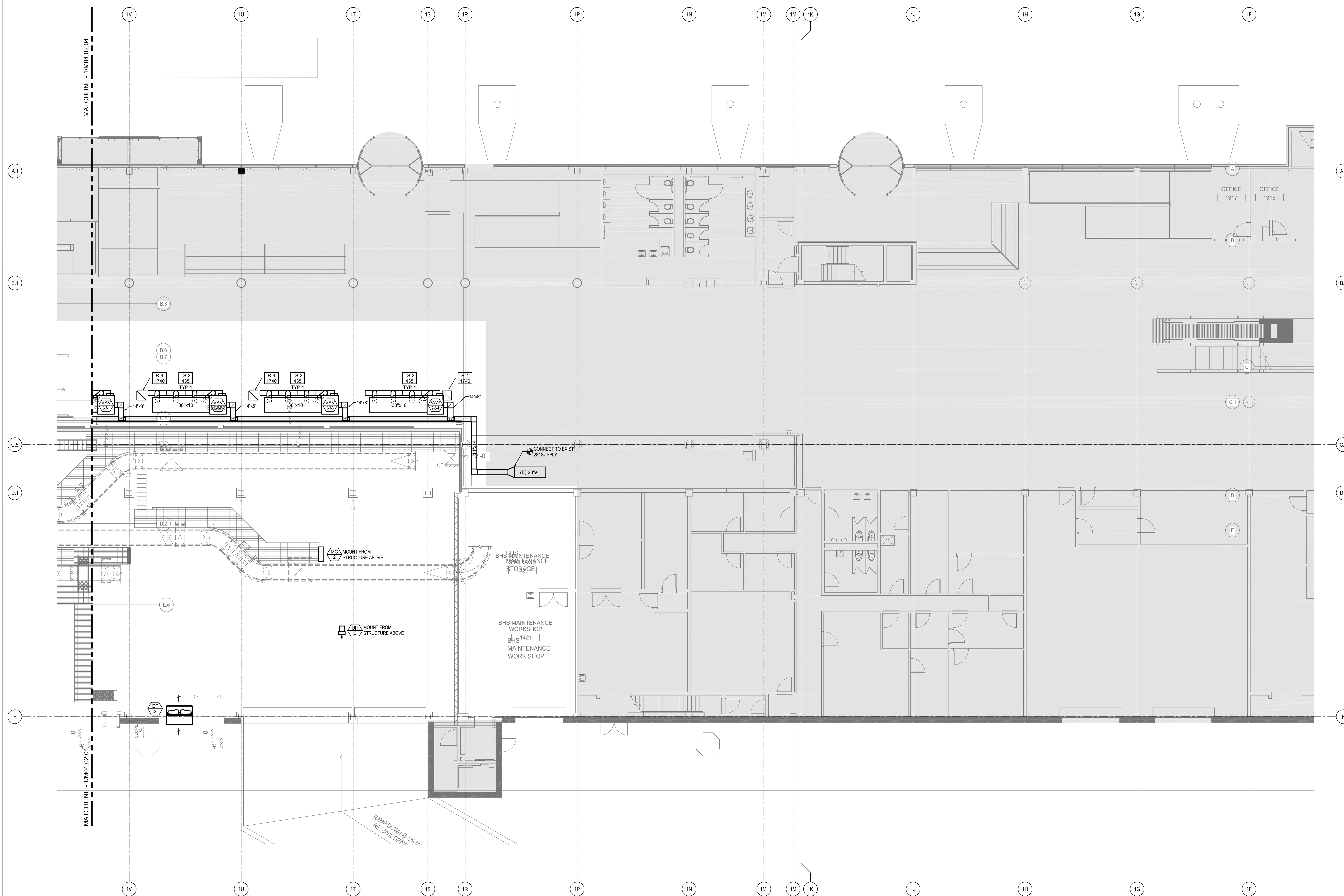
Portland International
Jetport

1001 Westbrook Street
Portland, Maine 04102

Gensler

2020 K Street, NW
Suite 200
Washington, DC 20006
Telephone 202.721.5200
Facsimile 202.872.8587

oest ASSOCIATES, INC.
363 Goshen Road, South Portland, ME 04106 P (207) 741-1770 F (207) 714-2461 www.oest.com
engineers • architects • surveyors • construction managers



GENERAL NOTES

- A SEE SHEET M00.00 FOR LEGEND AND GENERAL NOTES.
- B SUPPLY DUCTWORK SHALL BE SMACNA 10 INCH PRESSURE CLASS FROM AIR HANDLER OUTLET CONNECTIONS TO THE FAN POWERED VAV BOXES IN ALL AREAS AND TO THE SUPPLY REGISTERS AND GRILLES IN THE BAGGAGE HANDLING SPACE. RETURN DUCTWORK SHALL BE SMACNA 10 INCH PRESSURE CLASS FROM THE INLET OPENINGS TO THE AIR HANDLER CONNECTIONS.

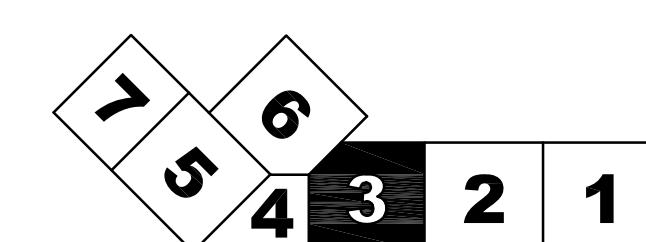
| Issue | Date & Issue Description | By | Check |
|-------|--------------------------|-----|-------|
| 01 | 07/11/08 | PWZ | RHB |
| 02 | 09/22/08 | PWZ | RHB |
| 03 | 12/03/08 | PWZ | RHB |
| 04 | 01/23/09 | PWZ | RHB |
| 05 | 10/26/09 | PWZ | RHB |

Seed/Signature

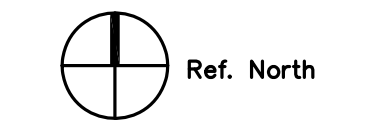
Project Name: PVM Terminal Enhancement
Date: 10/26/09

Project Number: 09-6395-000
CAD File Name: T:\5330\101\Sheets\M04.02.03.dwg
Description: MECHANICAL DUCTWORK PLAN - LEVEL 2 - ZONE 3

KEY PLAN



Scale: 1/8" = 1'-0"



M04.02.03

©2009 Gensler