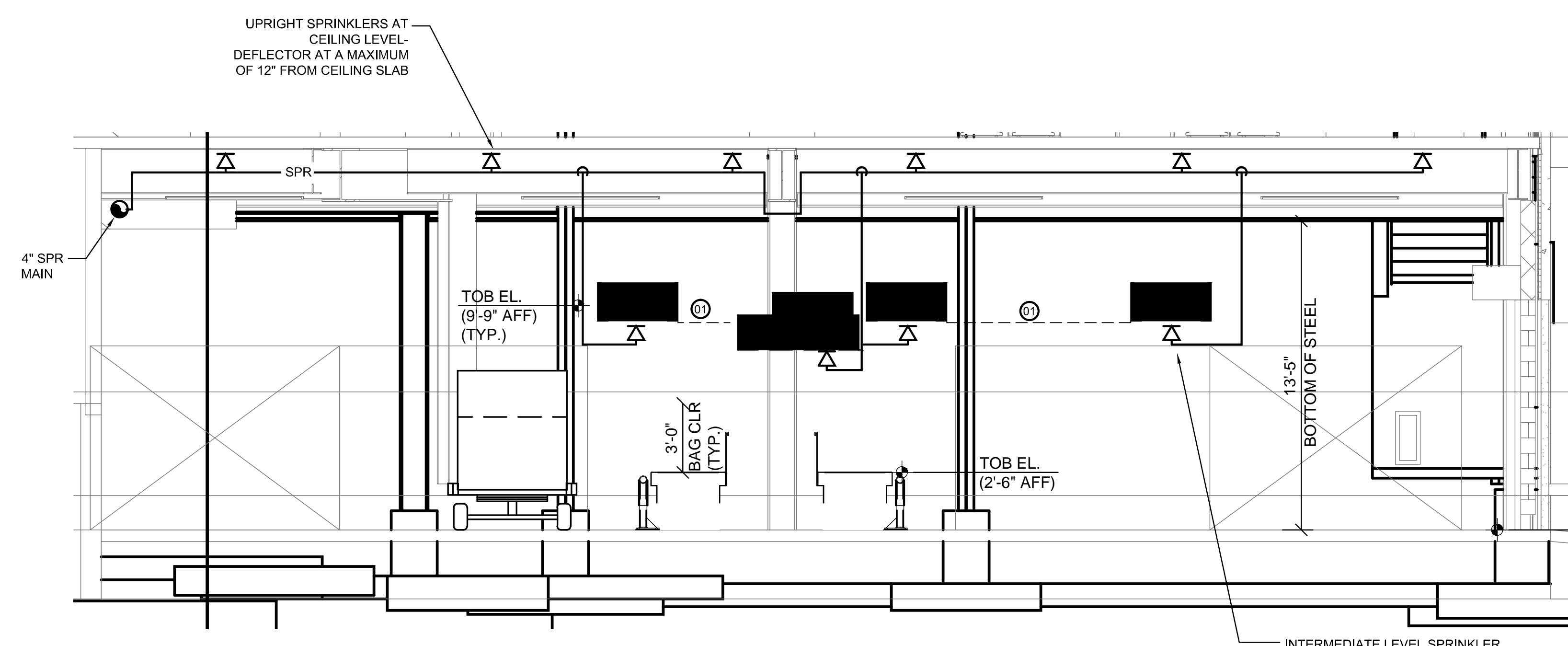
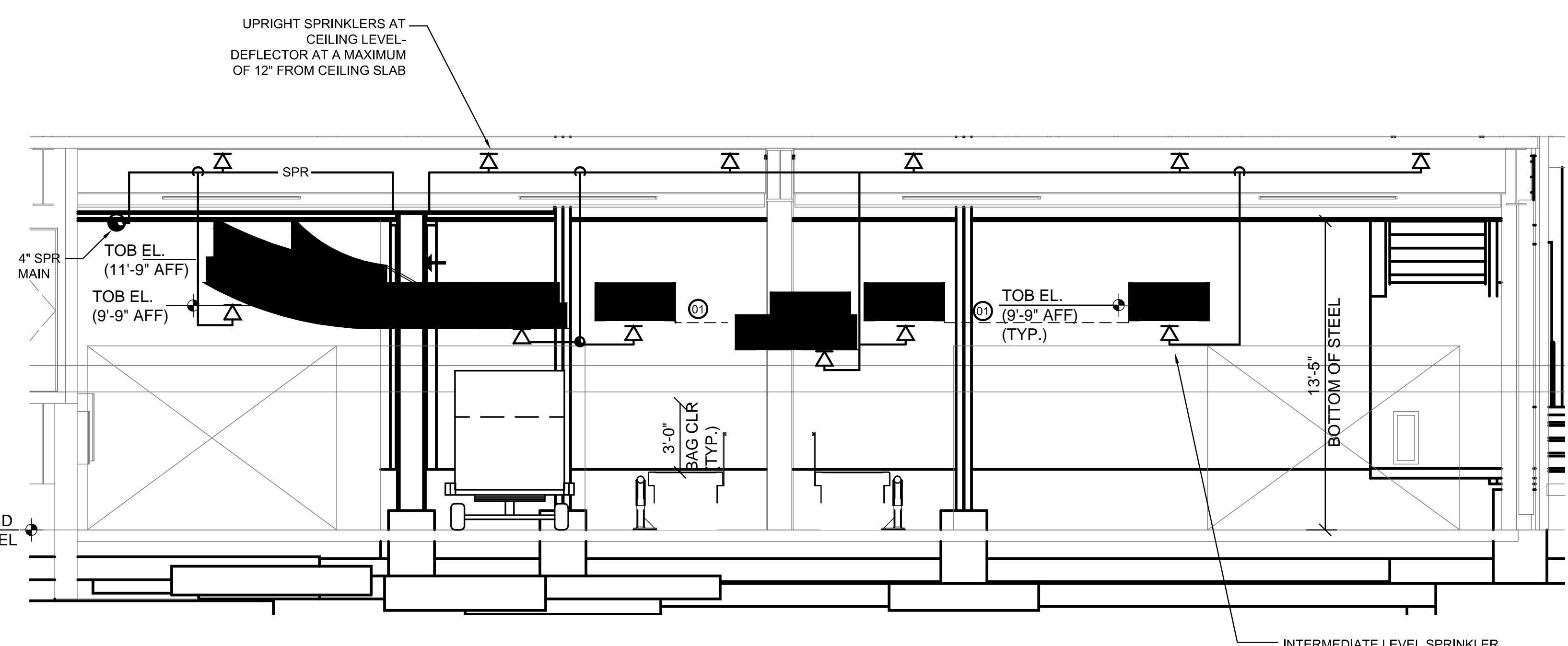


SHEET NOTES

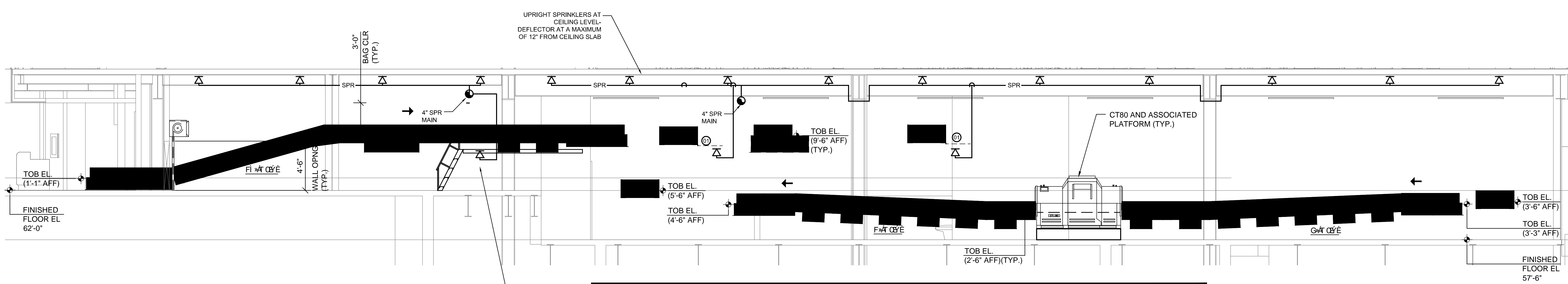
- 01 MIN. CLEARANCE TO UNDER SIDE OF SPRINKLER PIPING 8'-1".
- 02 ALL VERTICAL DROPS FOR UNDER CONVEYOR/PLATFORM/DUCTWORK SPRINKLERS SHALL BE KEPT TIGHT TO CONVEYOR/PLATFORM/DUCTWORK. DROPS SHOWN IN DETAIL ARE FOR REFERENCE ONLY AND SHALL NOT BE USED TO SCALE DISTANCE TO EQUIPMENT.



DETAIL - EXAMPLE SPRINKLER LOCATIONS AT CONVEYORS AND WALKWAYS 2
SCALE: NTS



DETAIL - EXAMPLE SPRINKLER LOCATIONS AT CONVEYORS AND WALKWAYS 3
SCALE: NTS



DETAIL - EXAMPLE SPRINKLER LOCATIONS AT CONVEYORS AND WALKWAYS 1
SCALE: NTS

GENERAL NOTES

A SEE SHEET FP00.01 FOR LEGEND, SCHEDULES & GENERAL NOTES.

Issue	Date & Issue Description	By	Check
01	12/03/08	SKD	WMC
02	01/23/09	MHY	JLD
03	10/26/09	JLD	SKD

Project Name
PJM Terminal Expansion

Project Number
08.0395.000

CAD File Name
FP12.02.dwg

Description
FIRE PROTECTION SECTIONS AT BAGGAGE SYSTEMS

Scale

Ref. North

