

**SHEET NOTES**

- 01 UNIT HEATER - COORDINATE SPRINKLER TEMPERATURE RATINGS PER NFPA 13.
- 02 SPRINKLERS AND PIPING MUST BE INSTALLED A MINIMUM OF 8'-1" ABOVE FINISHED FLOOR IN ANY LOCATIONS WHERE BAGGAGE CARTS CAN BE DRIVEN. THIS NOTE IS APPLICABLE TO ALL BAGGAGE HANDLING AREAS.
- 03 SEE SHEET FP.12.02 FOR SECTIONS OF BAGGAGE HANDLING AREAS.

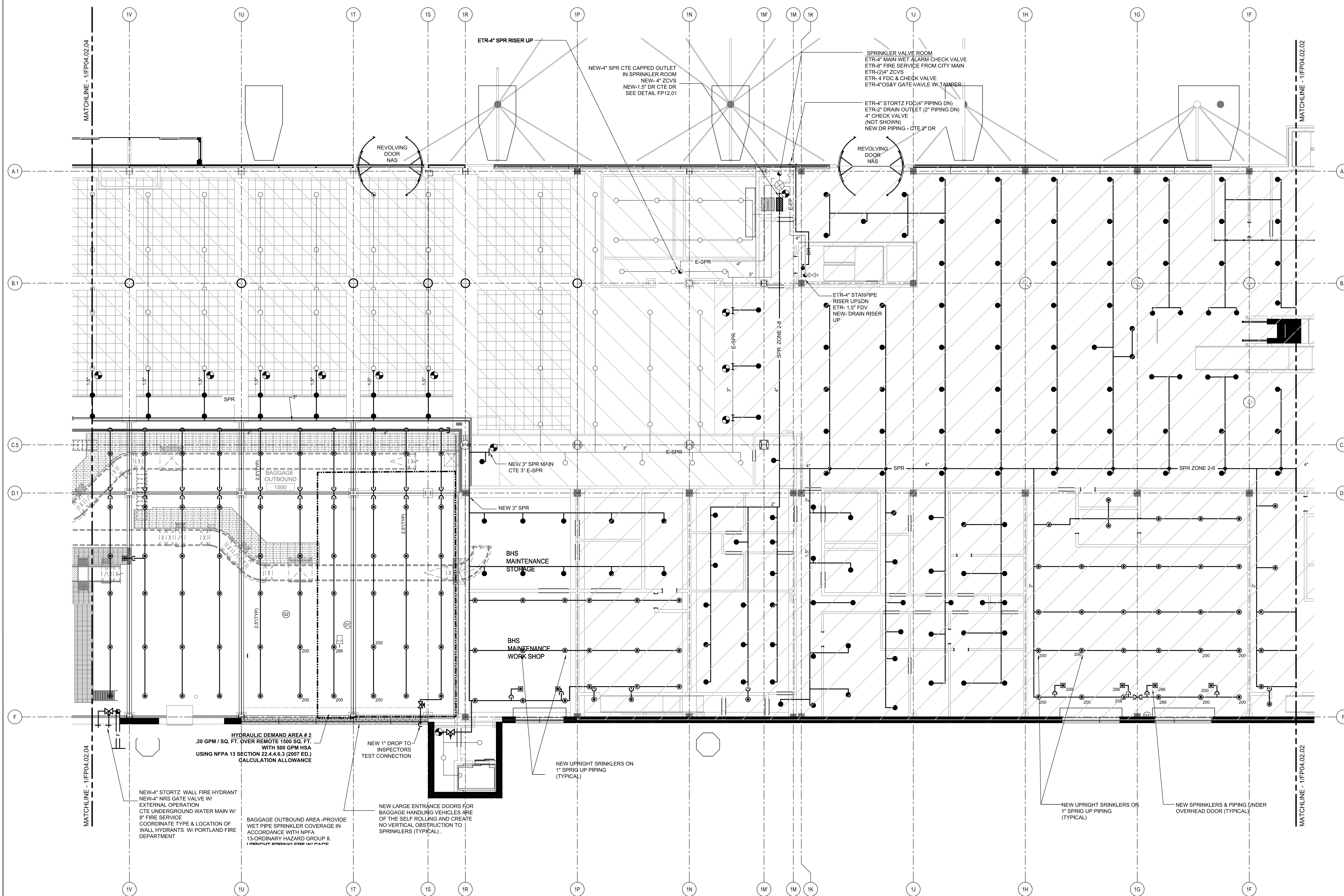
**Portland International Jetport**

1001 Westbrook Street  
Portland, Maine 04102

**Gensler**  
2020 K Street, NW  
Suite 200  
Washington, DC 20006  
Telephone 202.721.5200  
Facsimile 202.872.8587

**oest ASSOCIATES, INC.**  
343 Gopher Road, South Portland, ME 04106 P (207) 761-1777 F (207) 774-2343 www.oest.com  
engineers • architects • surveyors • construction managers

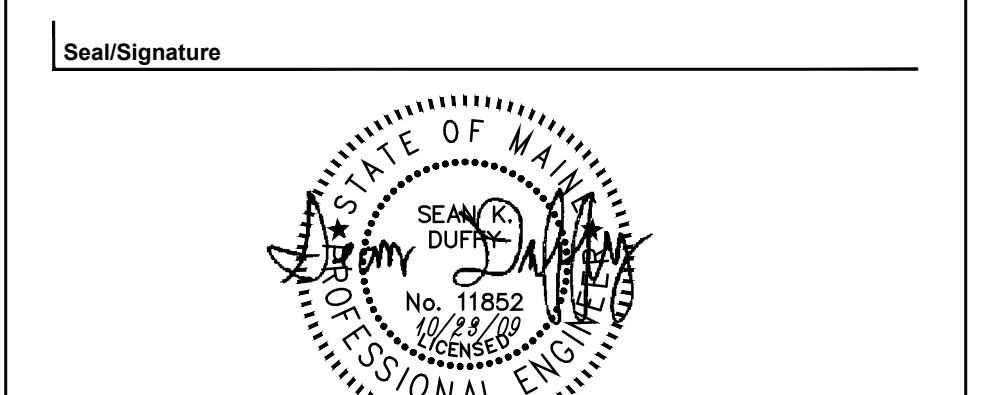
**FIRE RISK MANAGEMENT, INC.**  
1 Great Street  
Bath, ME 04510 P (207) 442-7268  
www.fire-risk.com



**GENERAL NOTES**

A SEE SHEET FP00.01 FOR LEGEND, SCHEDULES & GENERAL NOTES.

Issue	Date & Issue Description	By	Check
01	12/17/08		
02	01/23/09	TS&A 70% SUBMISSION	MHY JLD
03	10/26/09	95% CONSTRUCTION DOCUMENTS	JLD SKD
		ISSUED FOR PERMIT	



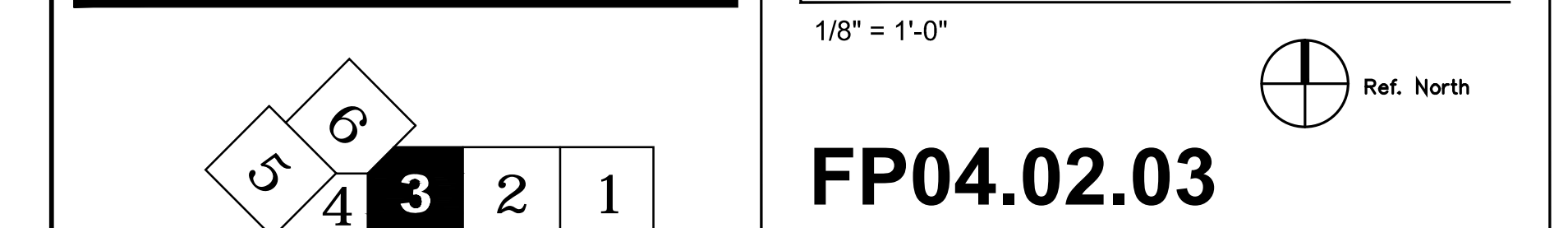
Project Name: PVM Terminal Expansion  
Project Number: 08.0395.000  
CAD File Name: FP04.02.03.dwg  
Description: FIRE PROTECTION PLAN - LEVEL 2 - ZONE 3

Scale: 1/8" = 1'-0"

**FP04.02.03**

©2009 Gensler

**KEY PLAN**



**FIRE PROTECTION PLAN - LEVEL 2 - ZONE 3**

SCALE: 1/8"=1'-0"