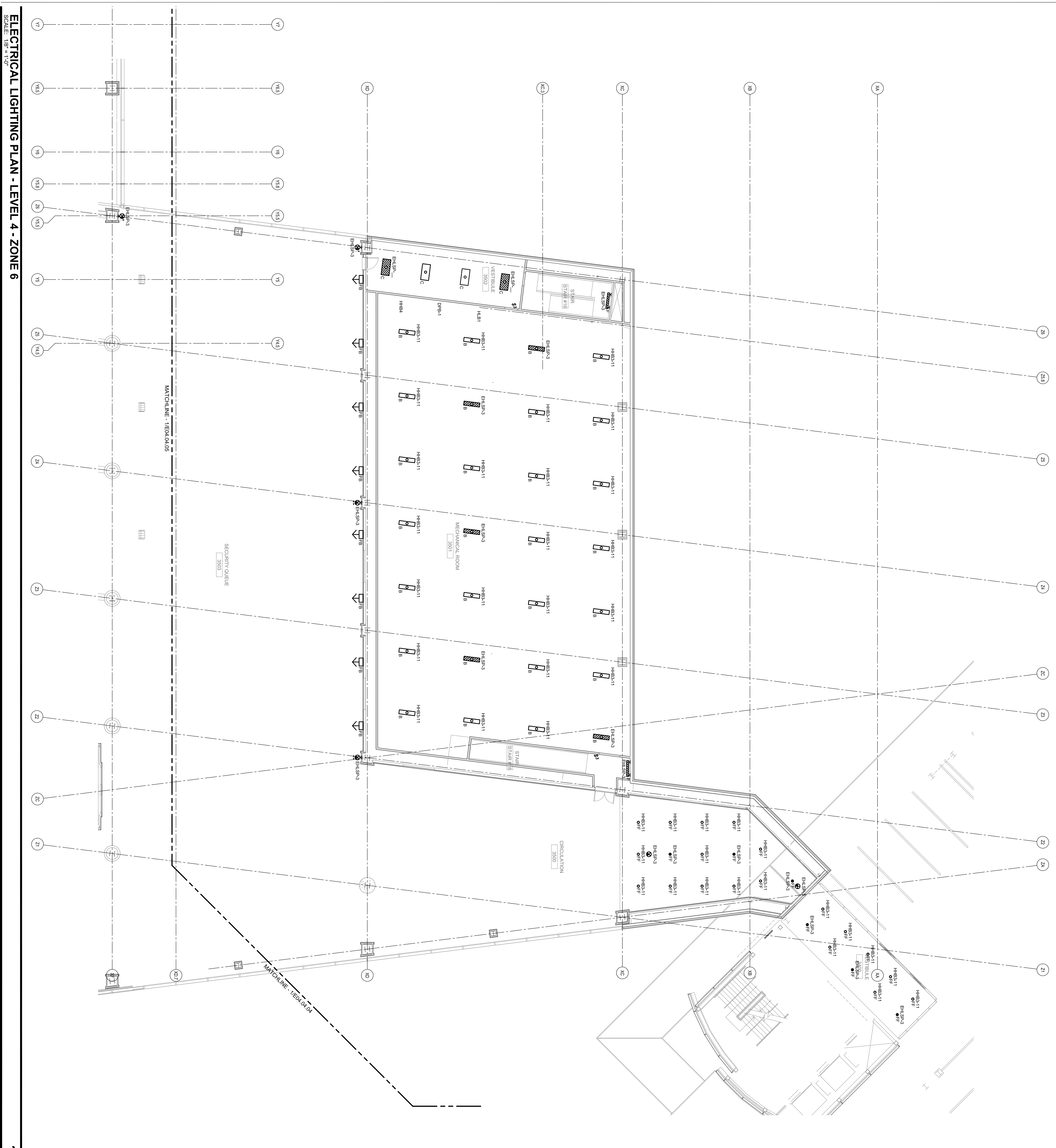


SHEET NOTES

Portland International
Jetport
1001 Westbrook Street
Portland, Maine 04102

Gensler
2025 K Street, NW
Suite 2000
Washington, DC 20006
Telephone 202.221.5200
Facsimile 202.672.5297

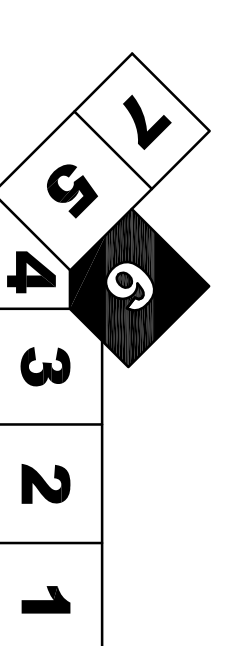
oast ASSOCIATES, INC.
3400 Cornerstone Drive, Suite 100, Portland, ME 04103
Tel: 207.761.1100 Fax: 207.761.1104
engineers • architects • interior architects • construction managers



GENERAL NOTES

- A SEE SHEET E04.00 FOR LEGEND AND GENERAL NOTES.
- B ALL TYPE B FIXTURES LOCATED IN THE MECHANICAL ROOM SHALL BE MOUNTED FLUSH WITH THE BOTTOM OF STEEL.

KEY PLAN



Revision	Date & Issue Description	By	Check
01	09/22/08	LAM	BHG
02	12/03/08	LAM	BHG
03	01/23/09	LAM	BHG
04	10/26/09	LAM	BHG

Issued for Permit

Project Name: PAMI Terminal Expansion
 Project Number: E04.04.06
 Designer: T. O'SHEA/SHAW-BLUMBERG
 Description: ELECTRICAL LIGHTING PLAN - LEVEL 4 - ZONE 6
 Scale: 1/8" = 1'-0"
 Ref. North