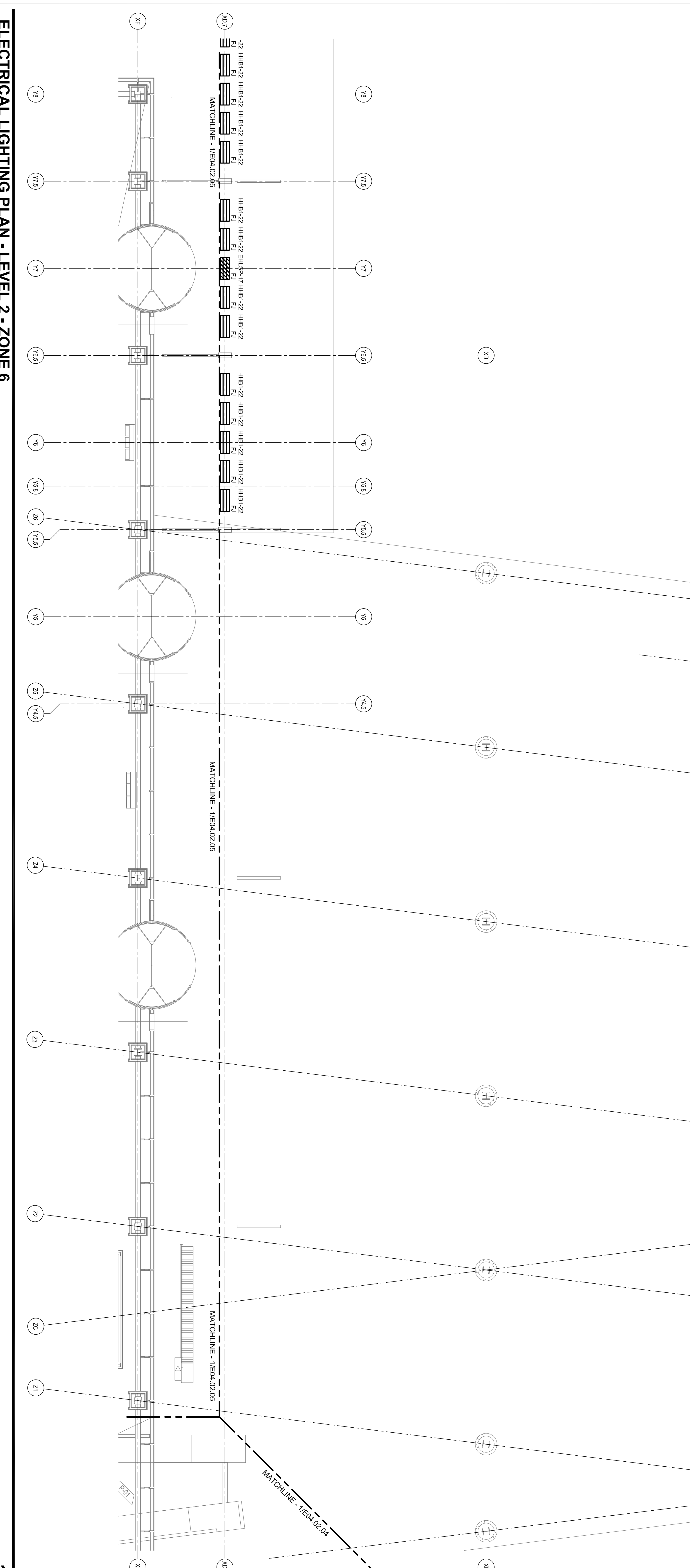
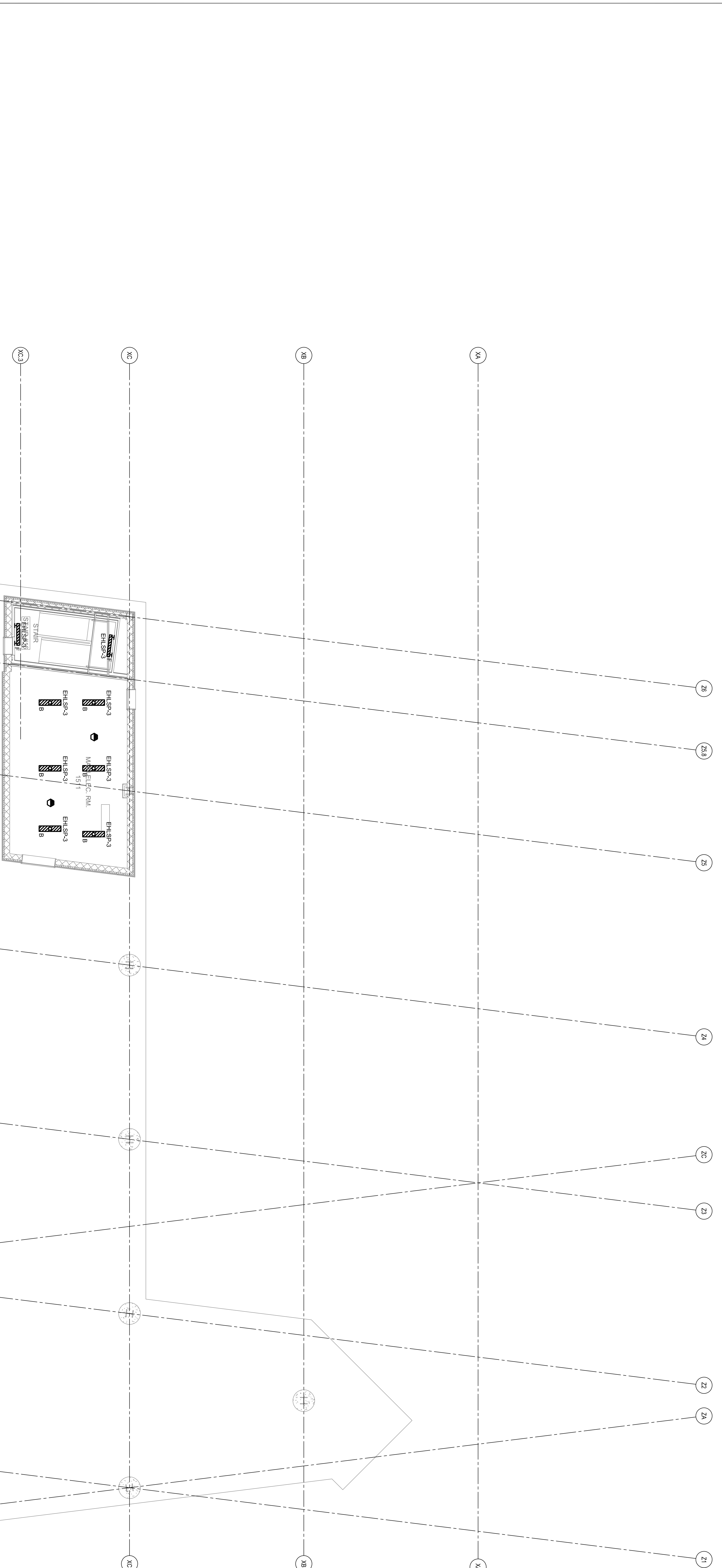


SHEET NOTES

Portland International
Jetport
1001 Westbrook Street
Portland, Maine 04102

Gensler
2001 K Street, NW
Suite 200
Washington, DC 20006
Telephone 202.221.5200
Facsimile 202.672.5297

oast ASSOCIATES, INC.
340 Commonwealth Street, Suite 400, Portland, ME 04101
Engineers - Architects - Surveyors - Construction Managers



GENERAL NOTES

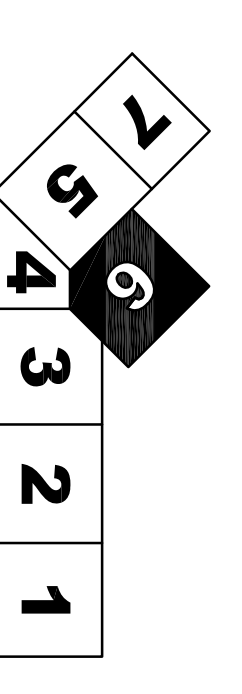
A SEE SHEET E00.00 FOR LEGEND AND GENERAL NOTES.

Revisions

No.	Date & Issue Description	By	Check
01	12/20/00 100% CONSTRUCTION DOCUMENTS	LAM	BHG
02	01/23/01 50% CONSTRUCTION DOCUMENTS	LAM	BHG
03	10/26/03 ISSUED FOR PERMIT	LAM	BHG

Project Name	Portland International Jetport
Project Number	E04.02.06
Client Name	Portland International Jetport
Designer	oast ASSOCIATES, INC.
Scale	1/8" = 1'-0"

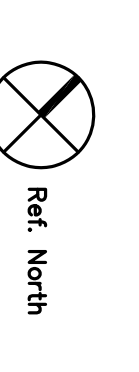
KEY PLAN



ELECTRICAL LIGHTING PLAN - LEVEL 2 - ZONE 6

SCALE: 1/8" = 1'-0"

E04.02.06



©2003 Gensler