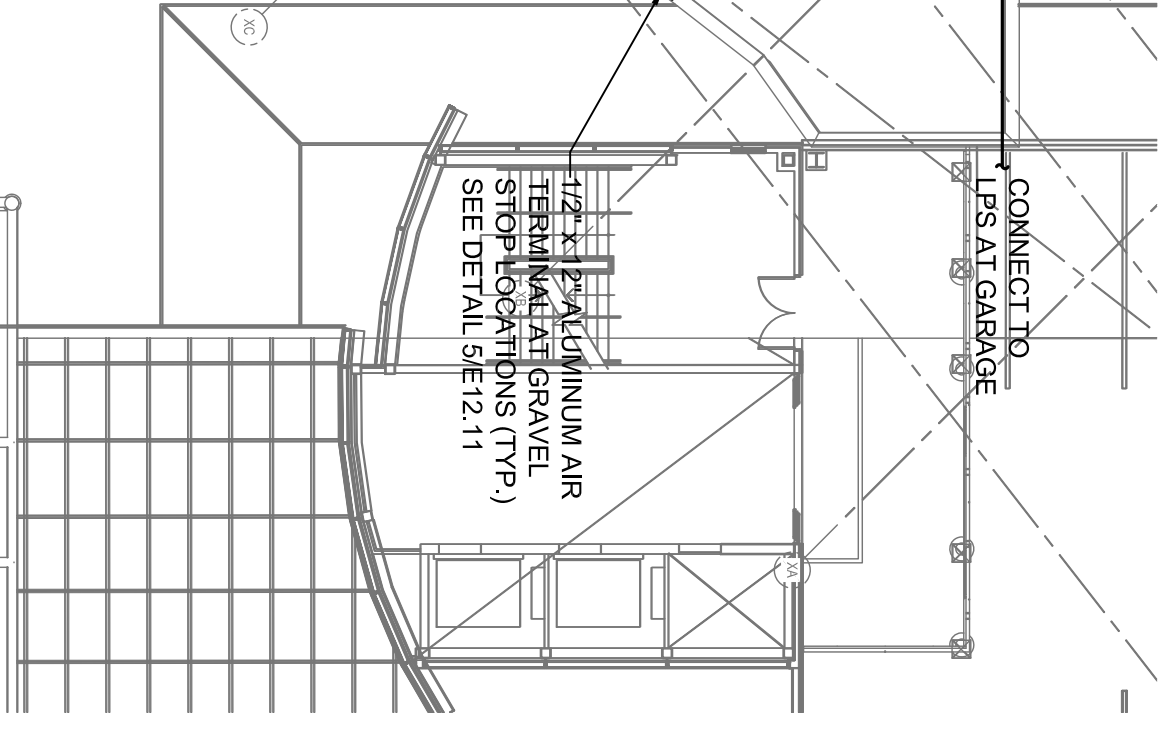
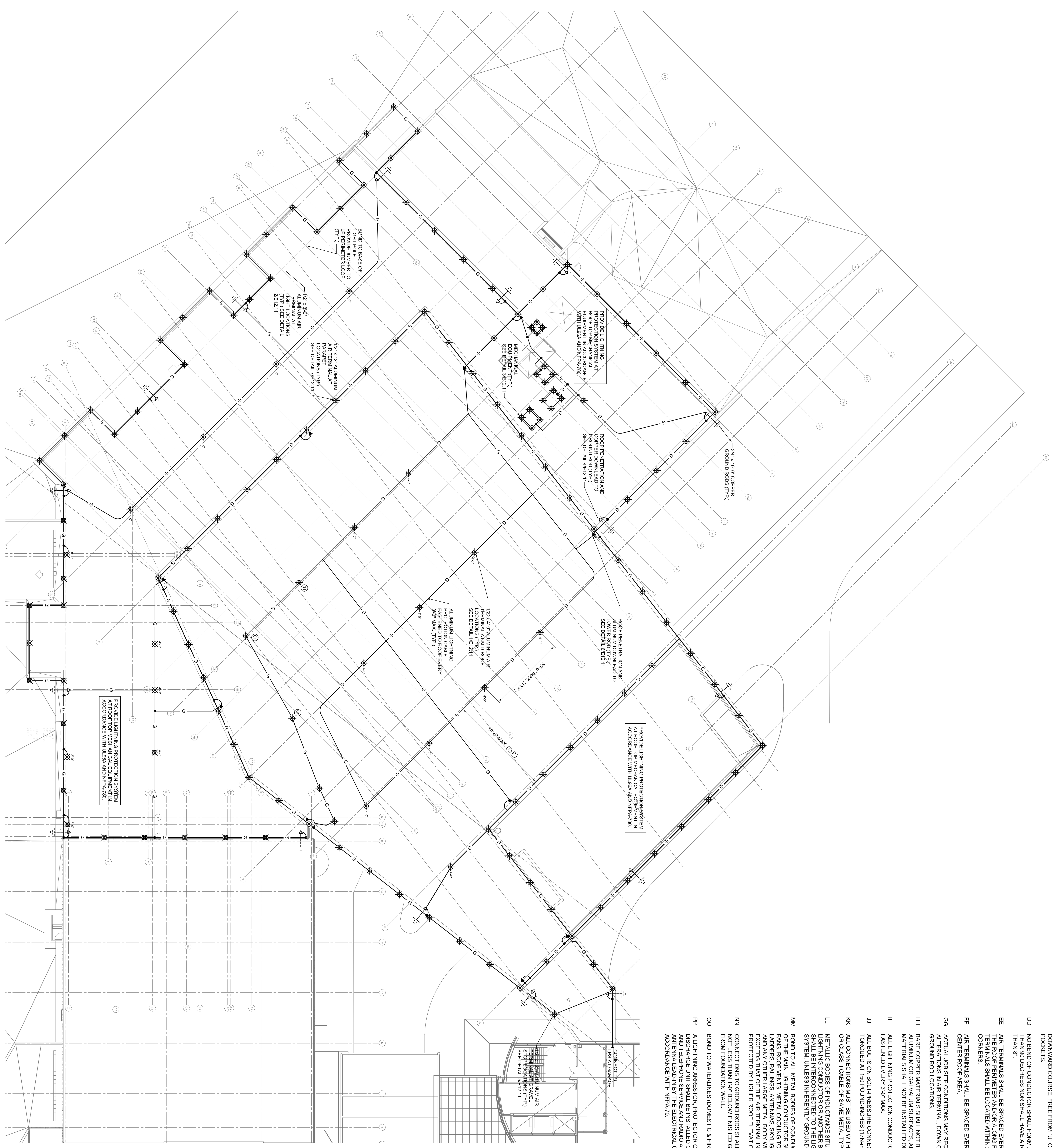


LIGHTNING PROTECTION NOTES

- AA ALL MATERIALS SHOWN ARE MANUFACTURED BY HEARY BROS. LIGHTNING PROTECTION CO., INC.
- BB THE LIGHTNING PROTECTION SYSTEMS AS SHOWN ON DRAWINGS ARE MANUFACTURED IN ACCORDANCE WITH U.S.A. & NFPA-780 LIGHTNING PROTECTION SYSTEM STANDARDS.
- CC CONDUCTORS SHALL MAINTAIN A HORIZONTAL OR VERTICAL COURSE. THE FROM "O" OR "V" (DOWN AND UP) POCKETS.
- DD NO BEND OF CONDUCTOR SHALL FORM AN ANGLE OF LESS THAN 90 DEGREES NOR SHALL HAVE A RADIUS OF BEND LESS THAN 5'.
- EE AIR TERMINALS SHALL BE SPACED EVERY 20' MAX. AROUND THE ROOF PERIMETER AND/OR ALONG RIDGES. AIR TERMINALS SHALL BE LOCATED WITHIN 2'-0" OF OUTSIDE CORNERS.
- FF AIR TERMINALS SHALL BE SPACED EVERY 50'-0" MAX. IN CENTER ROOF AREAS.
- GG ACTUAL JOB SITE CONDITIONS MAY REQUIRE SLIGHT ALTERATIONS IN AIR TERMINAL, DOWN CONDUCTORS AND GROUND ROD LOCATIONS.
- HH BARE COPPER MATERIALS SHALL NOT BE INSTALLED ON ALUMINUM OR GALVALUM SURFACES, AND ALUMINUM MATERIALS SHALL NOT BE INSTALLED ON COPPER SURFACES.
- II ALL LIGHTNING PROTECTION CONDUCTORS SHALL BE FASTENED EVERY 3'-0" MAX.
- JJ ALL BOLTS ON BOLTED PRESSURE CONNECTORS SHALL BE TORQUED AT 150 POUNDS-INCHES (17M-in).
- KK ALL CONNECTIONS MUST BE USED WITH UL LISTED CLASS 1 OR CLASS II CABLE OF SAME METAL TYPE.
- LL METALLIC BODIES OF INDUCTION SITUATED WITHIN 6'-0" OF A LIGHTNING CONDUCTOR OR ANOTHER BONDED METAL BODY SHALL BE INTERCONNECTED TO THE LIGHTNING CONDUCTOR SYSTEM UNLESS INHERENTLY GROUNDING.
- MM BOND TO ALL METAL BODIES OF CONDUCTANCE WITHIN 6'-0" OF THE MAIN LIGHTNING CONDUCTOR SUCH AS EXHAUST SYSTEMS, ROOF VENTS, MECHANICAL EQUIPMENT, LADDERS, RAILINGS, ANTENNAS, SKYLIGHTS, METAL STACKS AND ANY OTHER LARGE METAL BODY WHOSE HEIGHT EXCEEDS THAT OF THE AIR TERMINAL IN USE. UNLESS PROTECTED BY HIGHER ROOF ELEVATIONS.
- NN CONNECTIONS TO GROUND RODS SHALL BE MADE AT A POINT NOT LESS THAN 1'-0" BELOW FINISHED GRADE AND 2'-0" AWAY FROM FOUNDATION WALL.
- OO BOND TO WATERLINES (DOMESTIC & FIRE).
- PP LIGHTNING ARRESTOR, PROTECTOR OR ANTENNA ATTACHED TO DOWN CONDUCTOR SHALL BE ELECTRICALLY ANTENNA LEAD-IN BY THE ELECTRICAL CONTRACTOR IN ACCORDANCE WITH NFPA-70.

SHEET NOTES

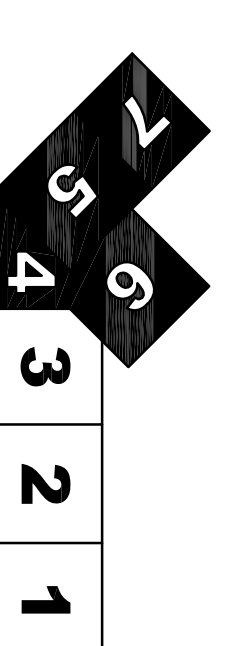
- 01 AIR TERMINAL MOUNTED 2'-0" FROM EDGE DUE TO PART 77 HEIGHT RESTRICTIONS.



GENERAL NOTES

- A SET SHEET E00.00 FOR LEGEND AND GENERAL NOTES.
- B CONTRACTOR SHALL REFER TO FIRE ALARM, SECURITY, IT, AND PUBLIC ADDRESS SYSTEMS DRAWINGS FOR CONDUITS & WIRING REQUIREMENTS. SEE SHEET E12.11 FOR LIGHTNING PROTECTION DETAILS.
- C ALL AIR TERMINALS SHALL BE 12" HIGH UNLESS OTHERWISE NOTED.

KEY PLAN



Portland International Jetport
1001 Westbrook Street
Portland, Maine 04102

Gensler
2001 K Street, NW
Suite 200
Washington, DC 20006
Telephone 202.221.5200
Facsimile 202.672.5297

oast ASSOCIATES, INC.
3600 Greenway Blvd., Suite 400, Littleton, CO 80120
Engineers • Architects • Surveyors • Construction Managers

PROGRESS SET NOT FOR CONSTRUCTION

Project Name: PIM Terminal Enhancement

Label Number: E02.RP.10

Drawn By: LAM

Scale: 1/8"=1'-0"

North

E02.RP.10

©2008 Gensler