

SHEET NOTES

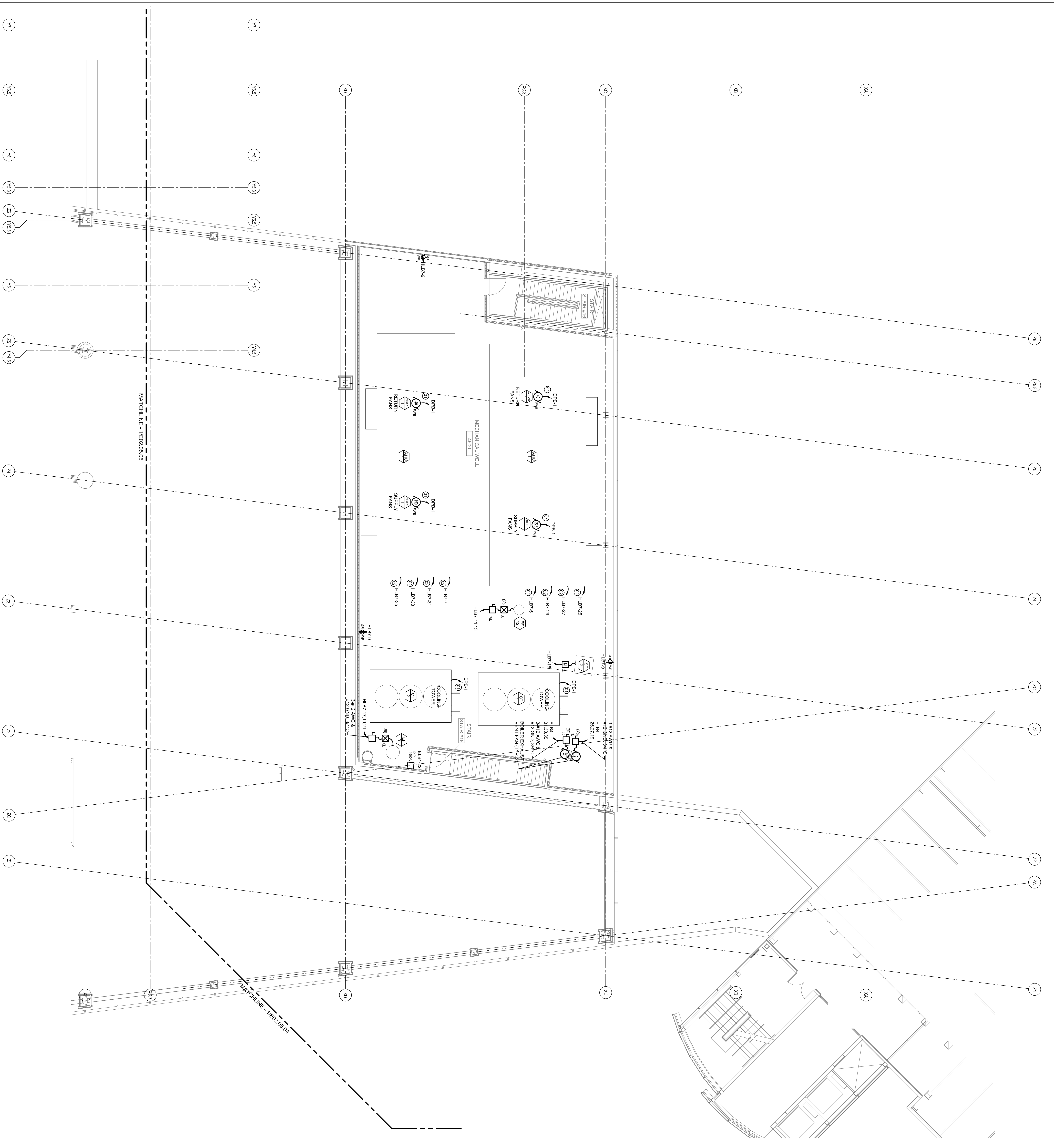
- 01 SEE ONELINE DIAGRAM ON SHEET E12.01 FOR CONDUIT & CONDUCTOR SIZES AS WELL AS DISCONNECTS & CONTROLLERS ASSOCIATED WITH THIS EQUIPMENT.
- 02 BRANCH CIRCUIT FOR LIGHTS & RECEPITS WITHIN AIR HANDLING UNITS ENCLOSURE.

**Portland International
Jetport**

1001 Westbrook Street
Portland, Maine 04102

Gensler
2021 K Street, NW
Suite 200
Washington, DC 20006
Telephone 202.221.5200
Facsimile 202.272.5297

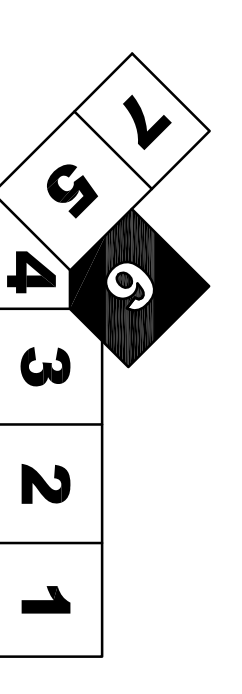
oast ASSOCIATES, INC.
346 Corporation Road, Suite 100, Portland, ME 04106
Engineers • Architects • Surveyors • Construction Managers



GENERAL NOTES

- A SEE SHEET E00.00 FOR LEGEND AND GENERAL NOTES.
- B CONTRACTOR SHALL REFER TO FIRE ALARM, SECURITY, IT, AND PUBLIC ADDRESS SYSTEMS DRAWINGS FOR CONDUITS & WIRING REQUIREMENTS.

KEY PLAN



ELECTRICAL POWER PLAN - LEVEL 5 - ZONE 6
SCALE: 1/8" = 1'-0"

Revision	Date & Issue Description	By	Check
01	9/22/2018 DESIGN DEVELOPMENT	LAM	BHG
02	12/03/2018 75% CONSTRUCTION DOCUMENTS	LAM	BHG
03	01/23/2019 90% CONSTRUCTION DOCUMENTS	LAM	BHG
04	10/26/2019 ISSUED FOR PERMIT	LAM	BHG

Project Name: PAMI Terminal Expansion
 Project Number: E02.05.06
 Drawing Title: ELECTRICAL POWER PLAN - LEVEL 5 - ZONE 6
 Designer: T.3333710@Gensler.com
 Scale: 1/8" = 1'-0"
 North Arrow:

E02.05.06

©2009 Gensler