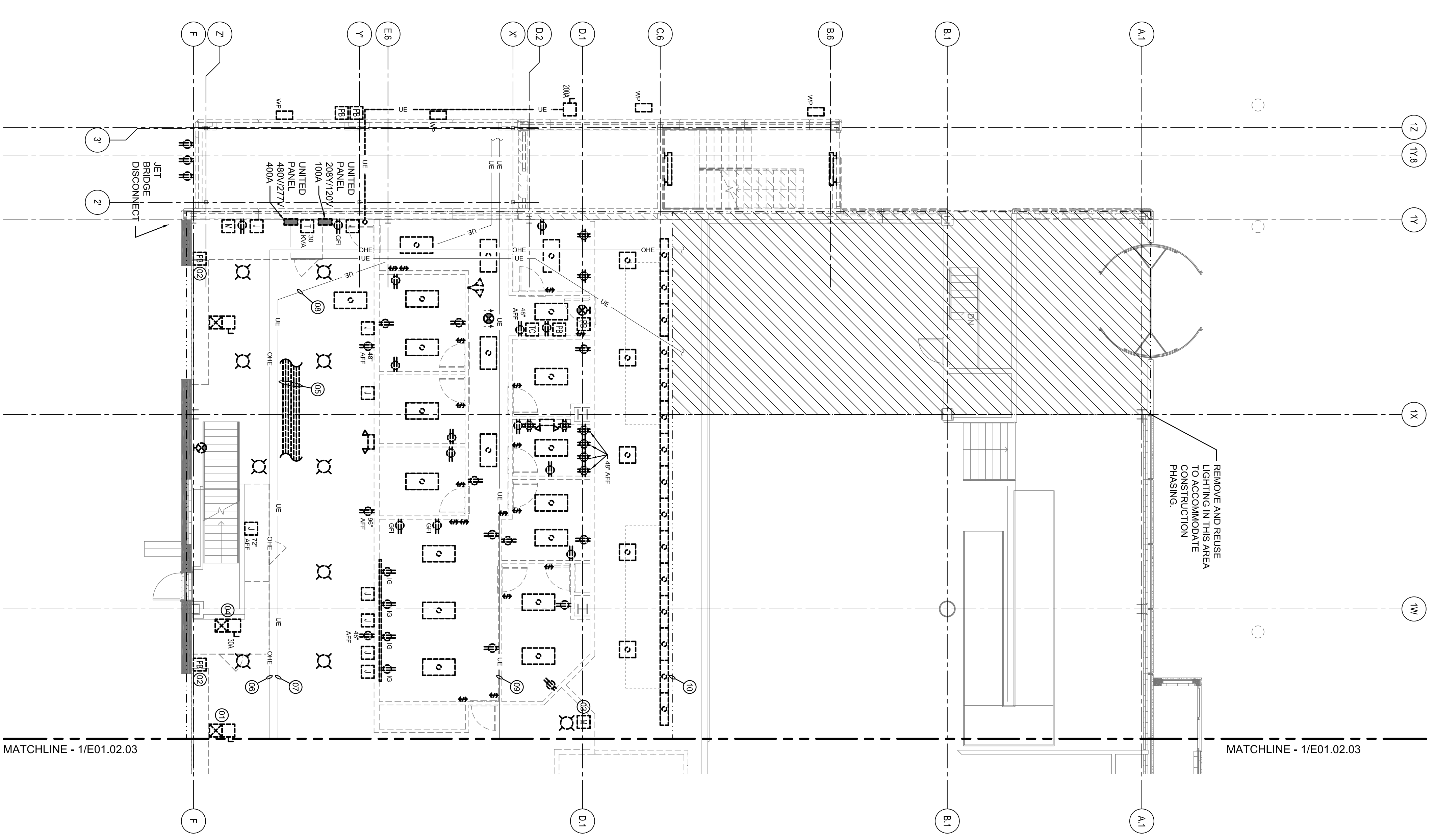


SHEET NOTES

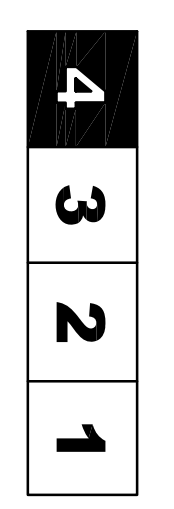
- 01 REMOVE DISCONNECTS, STARTER CONDUIT & WIRES FROM OVERHEAD DOOR MOTOR BACK TO SOURCE.
- 02 REMOVE PUSH BUTTON CONTROL FOR OVERHEAD DOOR. CONDUIT & WIRES SHALL BE REMOVED BACK TO SOURCE.
- 03 REMOVE MANUAL MOTOR STARTER AS WELL AS CONDUIT & WIRE BACK TO SOURCE FOR BAGGAGE BELT SECURITY DOOR MOTOR.
- 04 REMOVE DISCONNECT AND STARTER AS WELL AS CONDUIT AND WIRE BACK TO SOURCE FOR OVERHEAD MECHANICAL UNIT.
- 05 REMOVE ALL CONDUIT AND WIRING LOCATED OVERHEAD.
- 06 OVERHEAD FEEDER TO TSA PANEL, FEEDER SHALL BE RELOCATED AS HIGH AS POSSIBLE AND COORDINATED WITH BAGGAGE HANDLING EQUIPMENT.
- 07 APPROXIMATE LOCATION OF UNDERGROUND FEEDER FOR EXTERIOR LIGHTS. CONTRACTOR SHALL RELOCATE THIS FEEDER DEEPER TO REMAIN UNDER NEW FLOOR ELEVATION.
- 08 APPROXIMATE LOCATION OF UNDERGROUND FEEDER TO UNITED STATES AIR FORCE OFFICE. CONTRACTOR SHALL RELOCATE TO ACCOMMODATE NEW FLOOR ELEVATION AND EXTEND CONDUIT & CONDUCTORS TO NEW 400A LET BRIDGE NEW LOCATION OF NEW LET BRIDGE DISCONNECT.
- 09 APPROXIMATE LOCATION OF OLD BELTA 4 FEEDER. CONTRACTOR SHALL RELOCATE AS NECESSARY TO ACCOMMODATE NEW FLOOR ELEVATION.
- 10 ALL EXISTING OVERHEAD CONDUITS IN THIS AREA SHALL BE TRACED AND IF DEEMED NECESSARY TO REMAIN SHALL BE RELOCATED AS HIGH AS POSSIBLE TO ACCOMMODATE NEW BAGGAGE HANDLING SYSTEM. SEE BAGGAGE HANDLING DRAWINGS FOR LOCATION OF EQUIPMENT. EXTEND CONDUIT & CONDUCTORS AS NECESSARY.



GENERAL NOTES

- A. SEE SHEET E01.00 FOR LEGEND AND GENERAL NOTES.
- B. ALL DEVICES BEING REMOVED SHALL HAVE ALL ASSOCIATED CONDUIT & WIRING REMOVED BACK TO SOURCE.

KEY PLAN



**Portland International
Jetport**
1001 Westbrook Street
Portland, Maine 04102

Gensler
2001 L Street, NW
Suite 200
Washington, DC 20006
Telephone 202.221.5200
Facsimile 202.972.5297

oast ASSOCIATES, INC.
345 Commonwealth Blvd., Suite 200, Portland, ME 04102
Engineers • Architects • Surveyors • Construction Managers

△	Issue	Date & Issue Description	By	Checked
01	12/20/08	50% CONSTRUCTION DOCUMENTS	LAM	BHG
02	01/23/09	50% CONSTRUCTION DOCUMENTS	LAM	BHG
03	10/26/09	ISSUED FOR PERMIT	LAM	BHG

Project Name: PMA Terminal Expansion
 Labelled Number: E01.02.04
 Date: 10/26/09
 Designer: T. CANNON/SHAW/BH
 Description: ELECTRICAL DEMOLITION PLAN - LEVEL 2 - ZONE 4
 Scale: 1/8" = 1'-0"
 North

E01.02.04

©2009 Gensler