

**SHEET NOTES**

**Portland International  
Jetport**  
1001 Westbrook Street  
Portland, Maine 04102

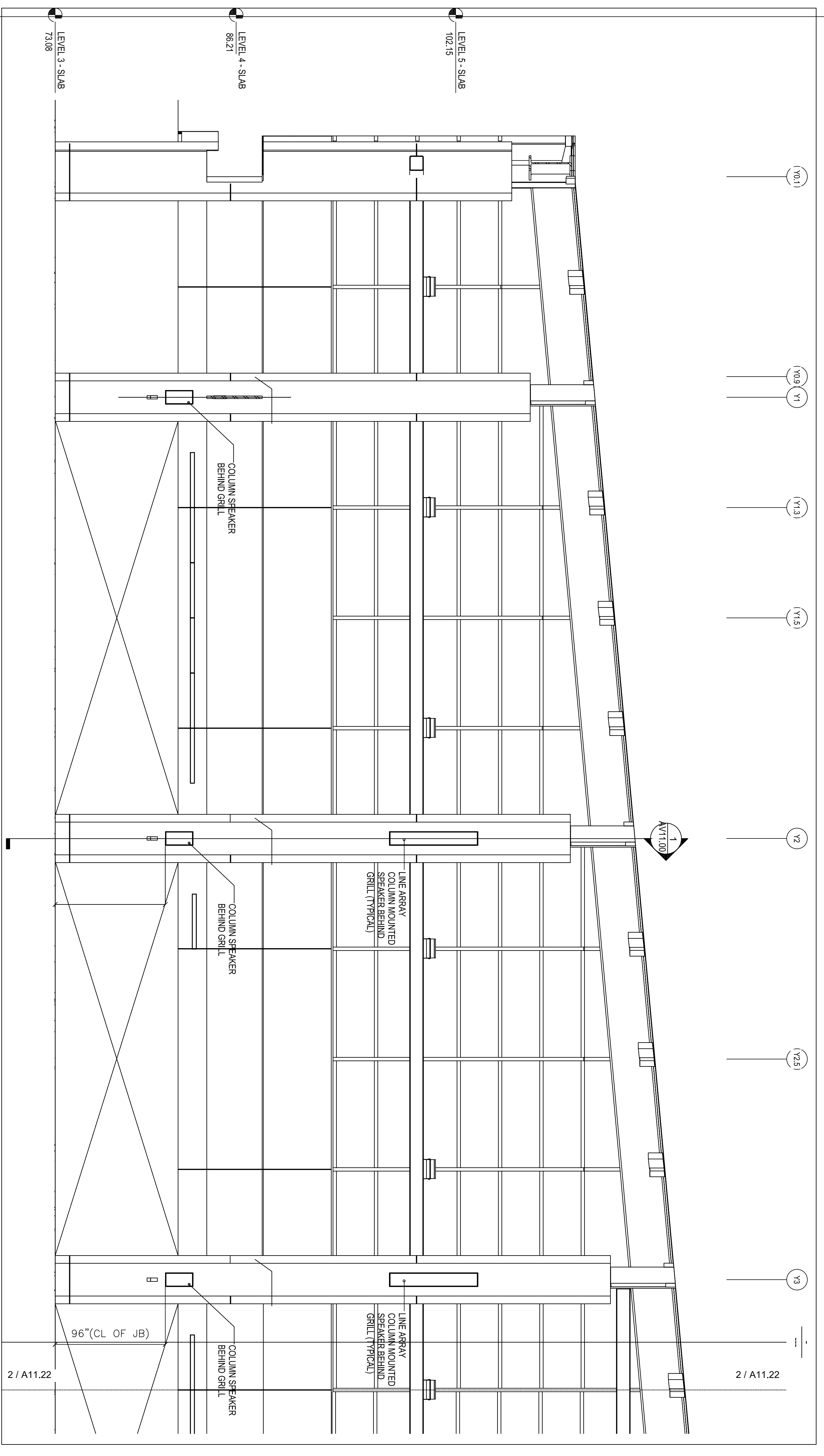
**Gensler**  
2020 K Street, Northwest  
Suite 200 DC 20006  
Washington, DC 20242  
Telephone 202.872.8800  
Facsimile 202.872.8897

**SM&W**  
3000 N. Fairfax Drive  
Suite 302  
Arlington, Virginia 22201  
Telephone 703.246.8904  
Facsimile 703.246.8904  
www.smwinc.com  
**SHEN MILSON WILKE**

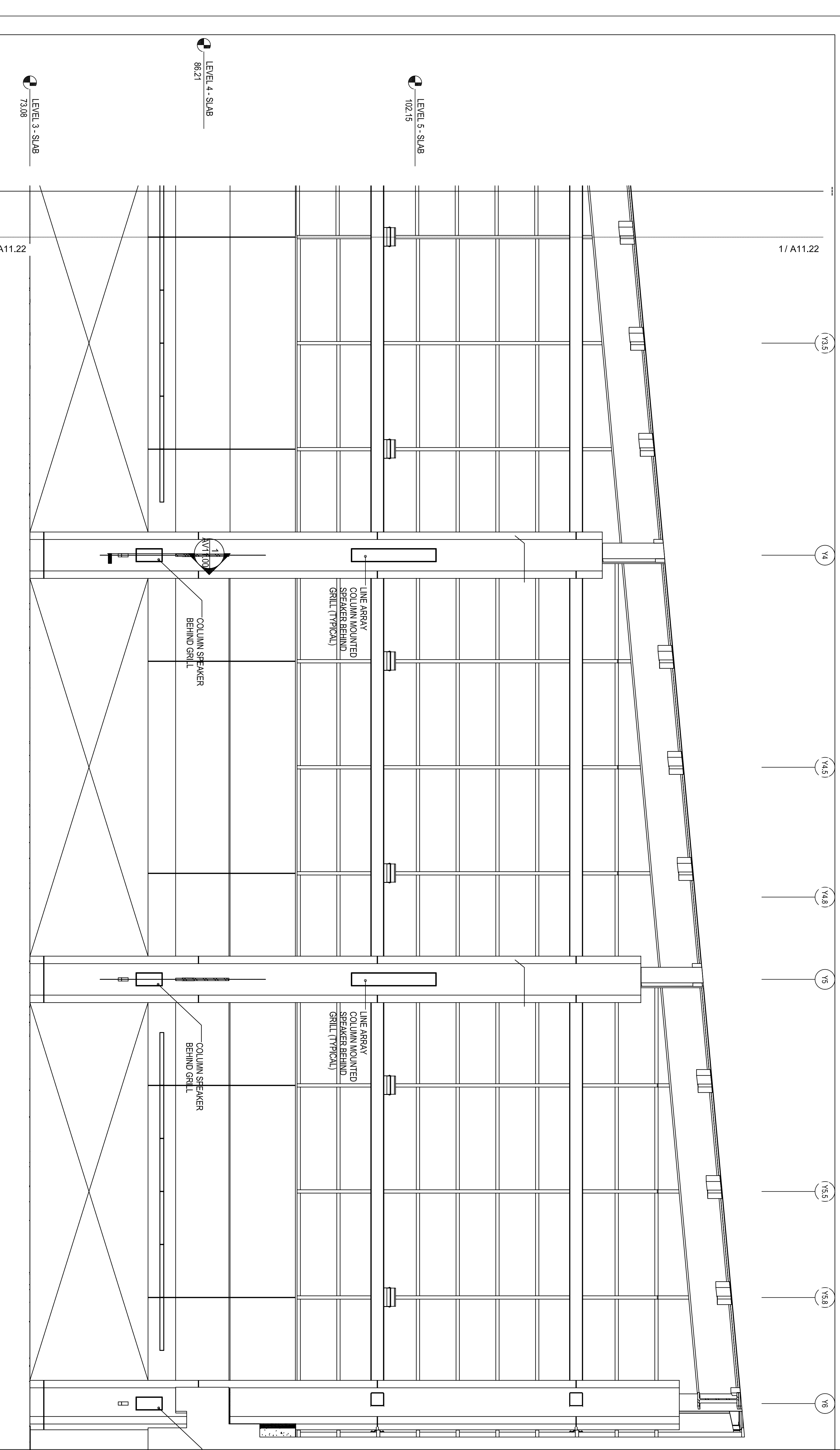
Issue	Date & Issue Description	By	Check
1	12/20/08 CONSTRUCTION DOCUMENTS		
2	1/20/09 PROGRESS ISSUE		
3	01/22/09 95% CONSTRUCTION DOCUMENTS		
4	10/20/09 PROGRESS ISSUE		
5	10/20/09 ISSUED FOR PERMIT		

Project Name: **PVI/T TERMINAL EXPANSION**  
 Project Number: **0016350100**  
 CAD File Name: \_\_\_\_\_  
 Description: **AUDIOVISUAL ELEVATIONS - LEVEL 3**  
 Scale: **As Indicated**

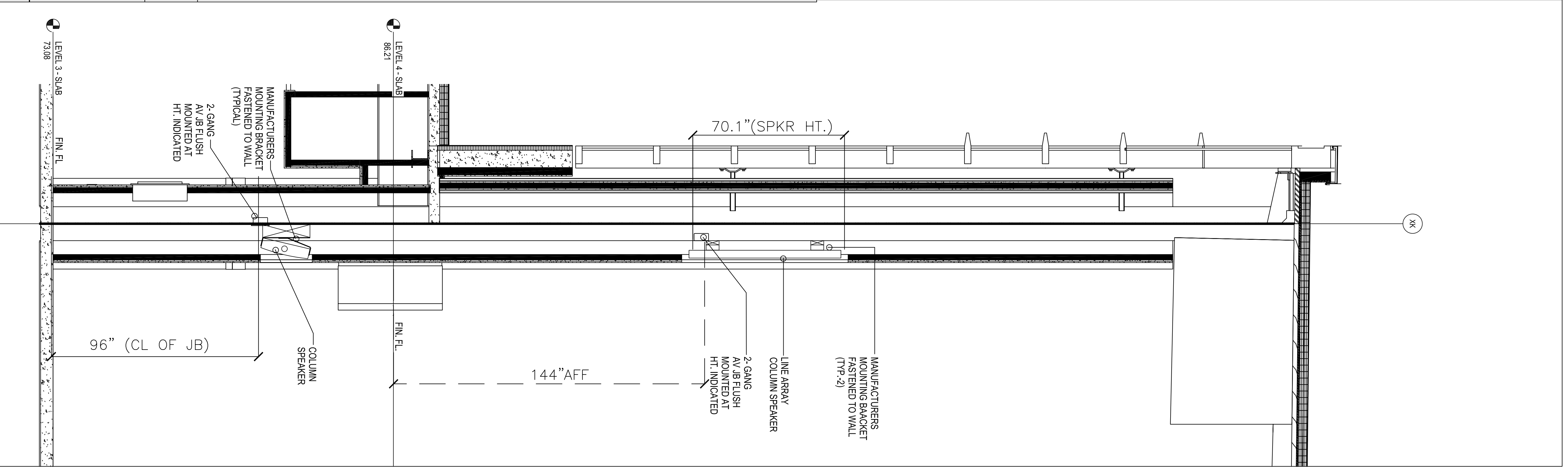
**AV11.00**  
©2008 Gensler



**SECURITY SCREENING LEVEL - SOUTH-SPEAKER MOUNTING LOCATIONS - ELEVATION 3**  
SCALE: 1/4" = 1'-0"



**SECURITY SCREENING LEVEL - SOUTH - CONT - SPEAKER MOUNTING LOCATIONS - ELEVATION 2**  
SCALE: 1/4" = 1'-0"



**SECTION - 1 - SPEAKER AND JB MOUNTING DETAIL**  
SCALE: 1/2" = 1'-0"

**KEY PLAN**