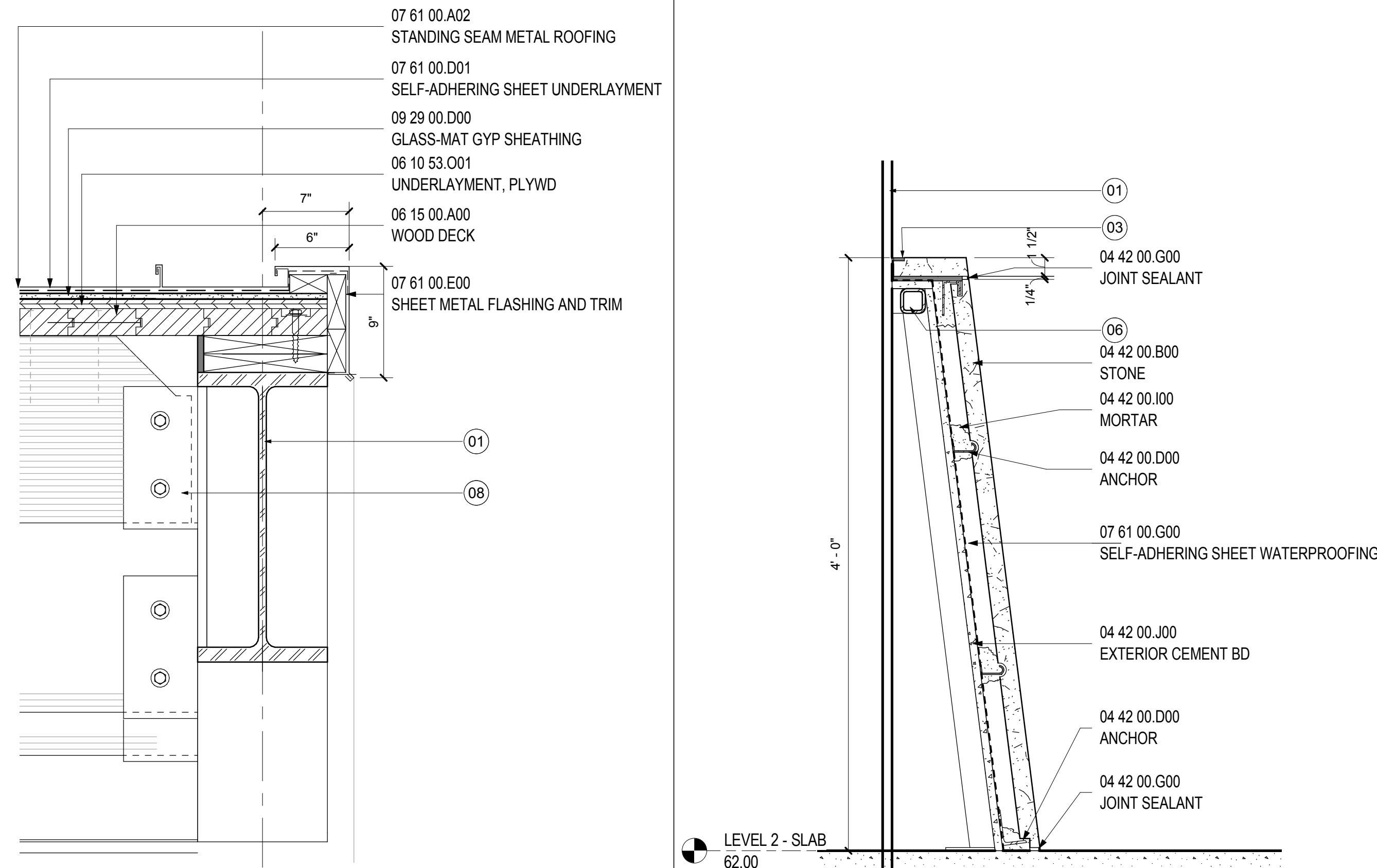
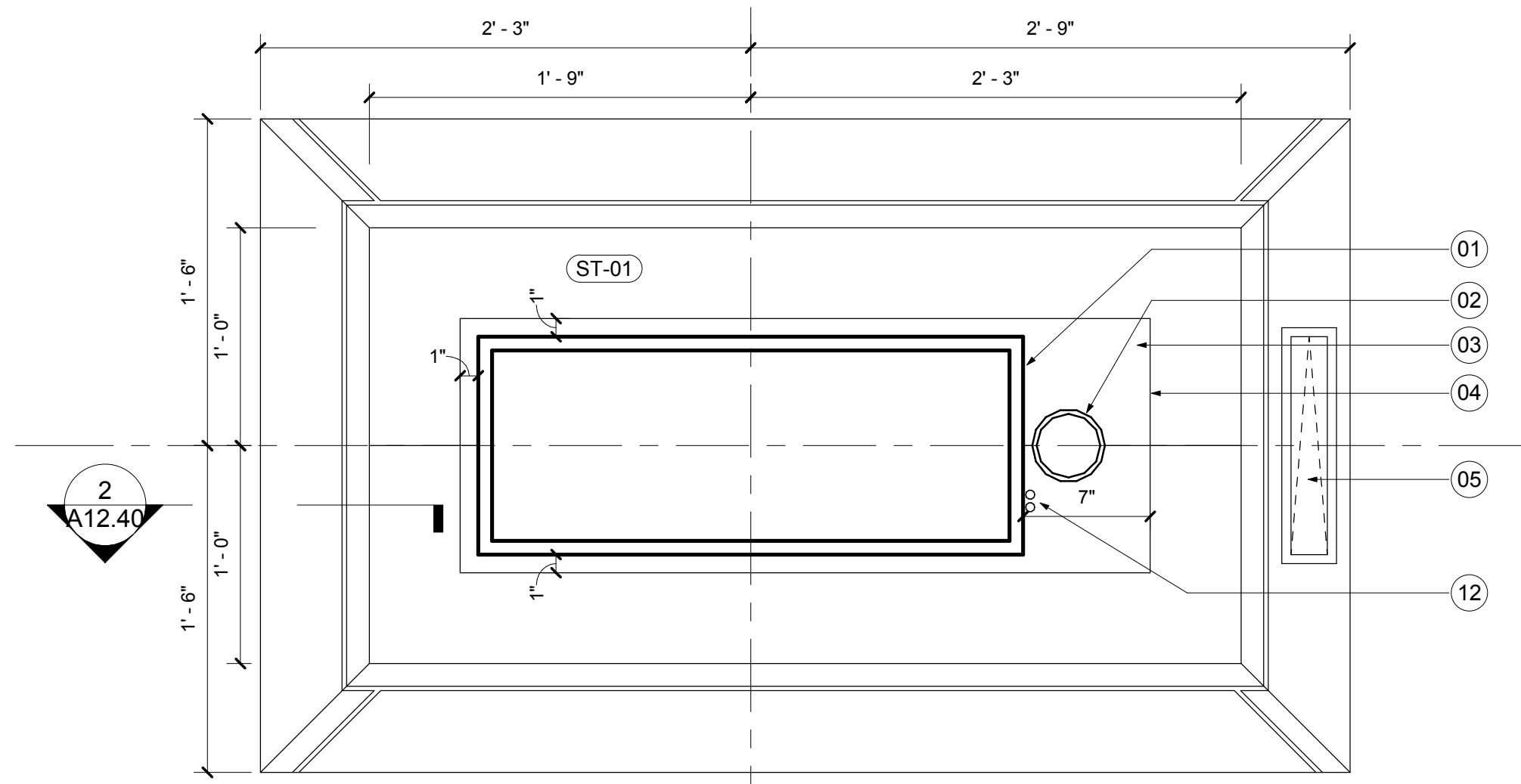


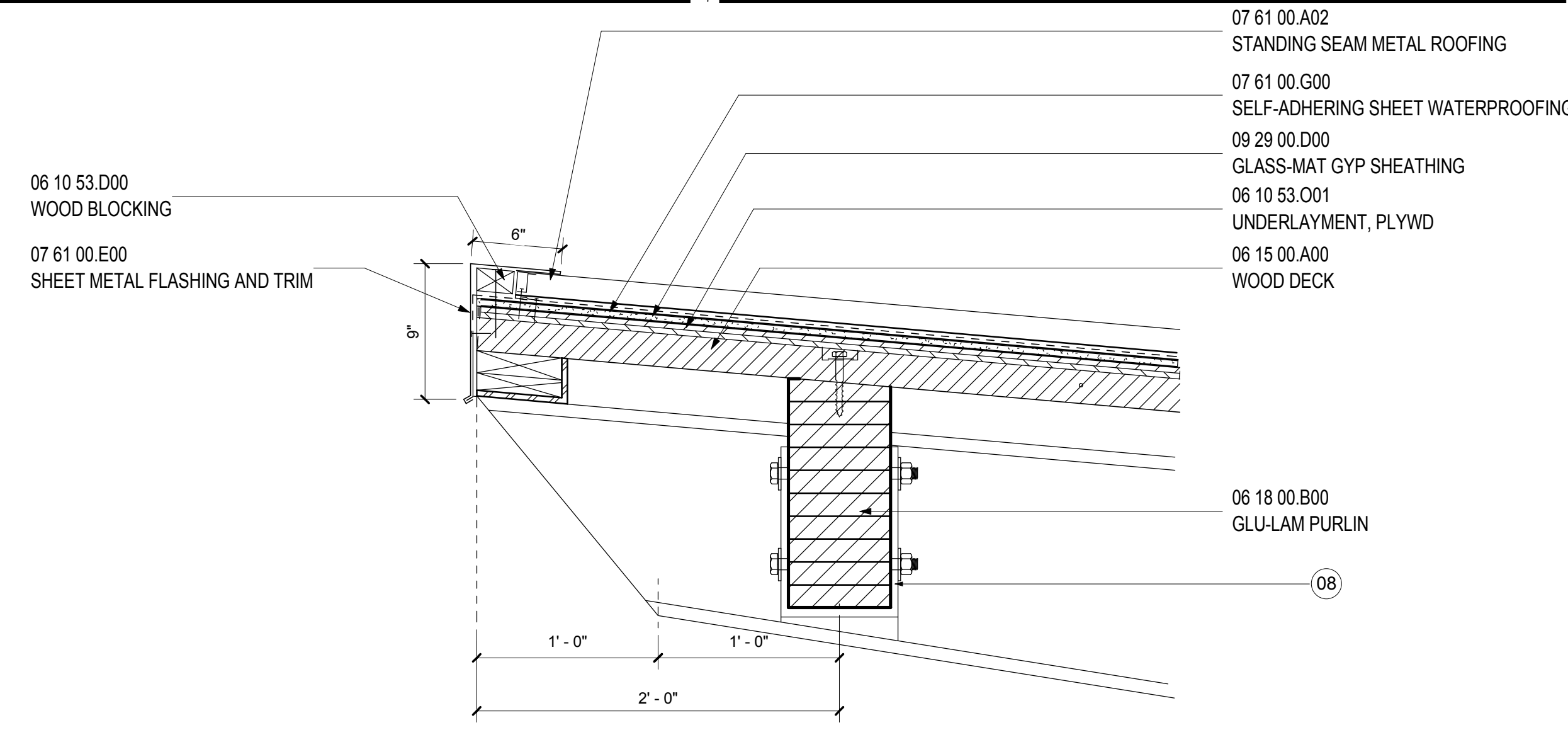
CANOPY DTL- CENTER BEAM
SCALE: 1 1/2" = 1'-0" A09.70 **6**

STONE BASE @ CANOPY
SCALE: 1 1/2" = 1'-0" A09.70 **1**

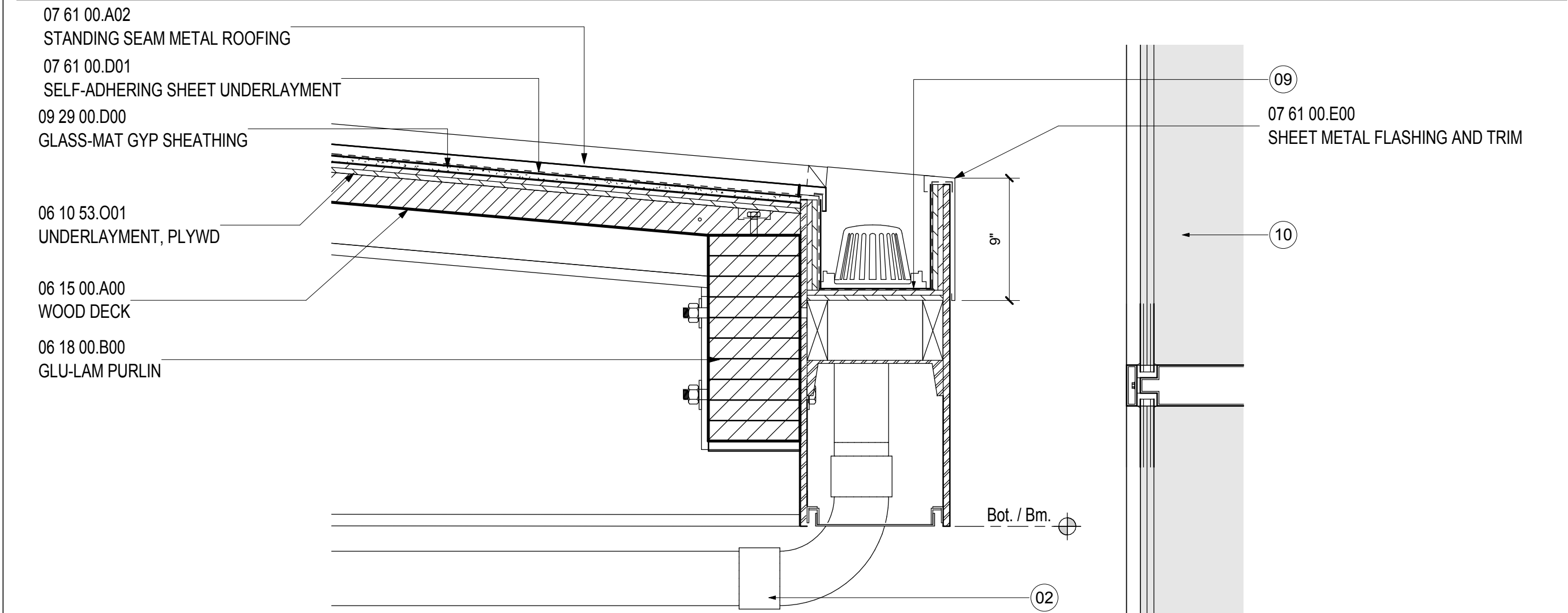


CANOPY DTL- END
SCALE: 1 1/2" = 1'-0" A02.RP.04 **5**

SECTION @ STONE BASE
SCALE: 1 1/2" = 1'-0" A12.40 **2**



CANOPY DTL- FRONT
SCALE: 1 1/2" = 1'-0" A02.RP.04 **3**



CANOPY DTL- REAR
SCALE: 1 1/2" = 1'-0" A02.RP.04 **4**

SHEET NOTES

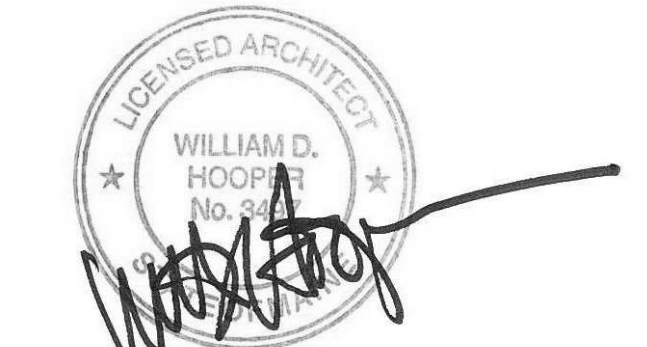
- 01 PAINTED AESS. RE: STRUCTURAL DRAWINGS FOR ADDITIONAL INFORMATION
- 02 PAINTED RAIN LEADER WITH HEAT TRACE. RE: PLUMBING DRAWINGS FOR MORE INFORMATION
- 03 STEEL ENCLOSURE PLATE TO BE INSET FLUSH INTO STONE AND PAINT P-02. NO EXPOSED FASTENERS
- 04 BUTT JOINT
- 05 LOCKABLE STAINLESS STEEL ACCESS PANEL
- 06 STAINLESS STEEL TUBE FRAMING AS REQUIRED
- 07 BLOCKING AS REQUIRED
- 08 STRUCTURAL CONNECTION PAINTED TO MATCH TAPER COLUMN. REFER TO STRUCTURAL STEEL DRAWINGS FOR ADDITIONAL INFORMATION
- 09 STAINLESS STEEL GUTTER: SLOPED 1/8" PER FOOT MIN.
- 10 CURTAIN WALL REFER TO A09.00 SERIES FOR ADDITIONAL INFORMATION
- 11 SCHEDULED LIGHT FIXTURE. COORDINATE CONDUIT RUNS AND MOUNTING
- 12 CONDUITS FOR LIGHTING AND SPEAKERS TO RUN TIGHT TO AESS. ALL EXPOSED CONDUIT TO BE PAINTED TO MATCH AESS. COORDINATE NUMBER AND ROUTING AS REQUIRED.

Portland International Jetport
1001 Westbrook Street
Portland, Maine 04102

Gensler
2020 K Street, Northwest
Suite 200
Washington DC 20006
Telephone 202.721.5200
Facsimile 202.872.8587

Issue	Date & Issue Description	By	Check
01	01/21/09		
02	10/26/09		

Seal/Signature



Project Name
PWM Terminal Enhancement

Project Number
09.6395.000

Description
CANOPY DETAILS

Scale
1 1/2" = 1'-0"

A12.40

© 2009 Gensler