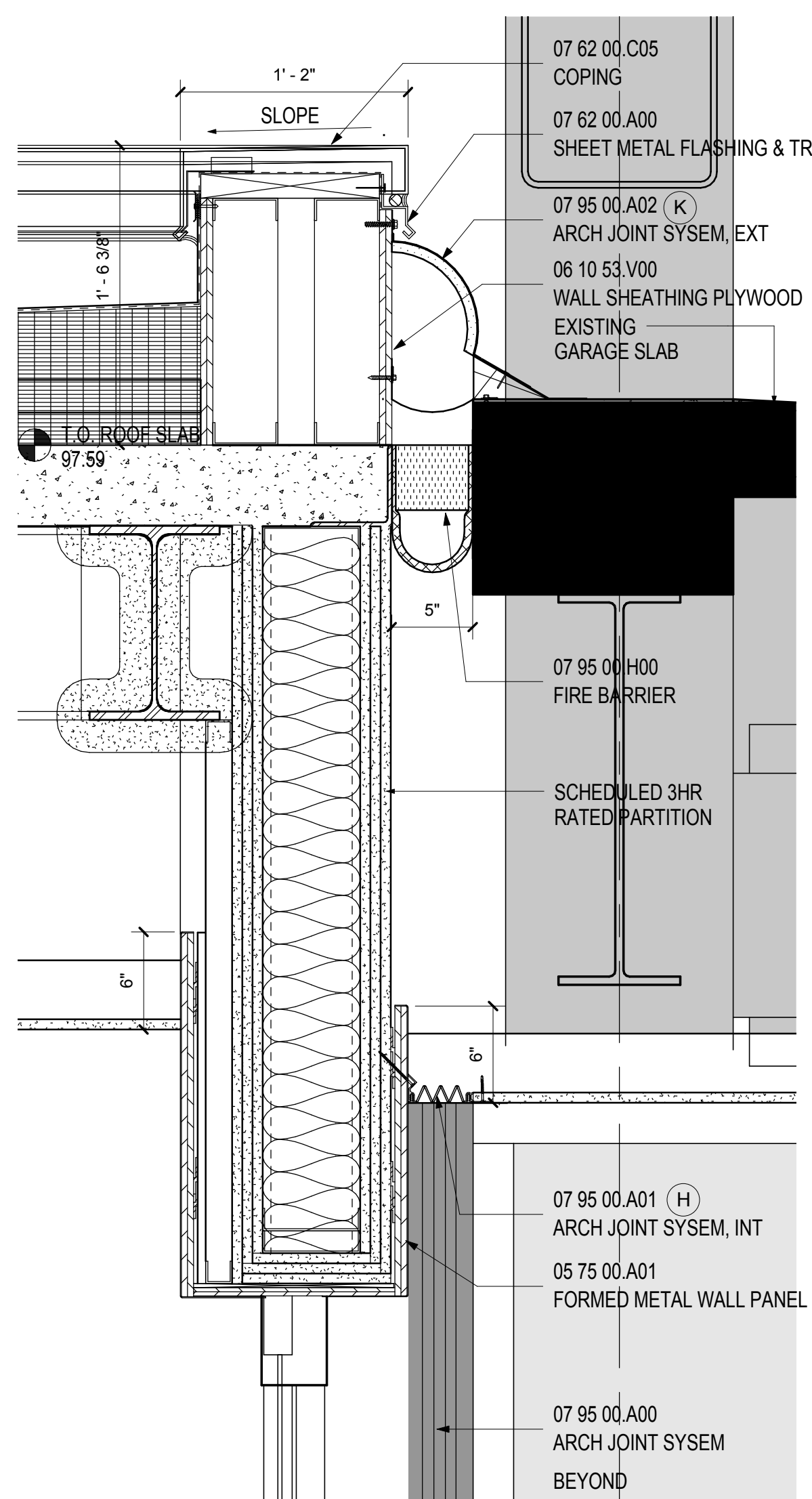
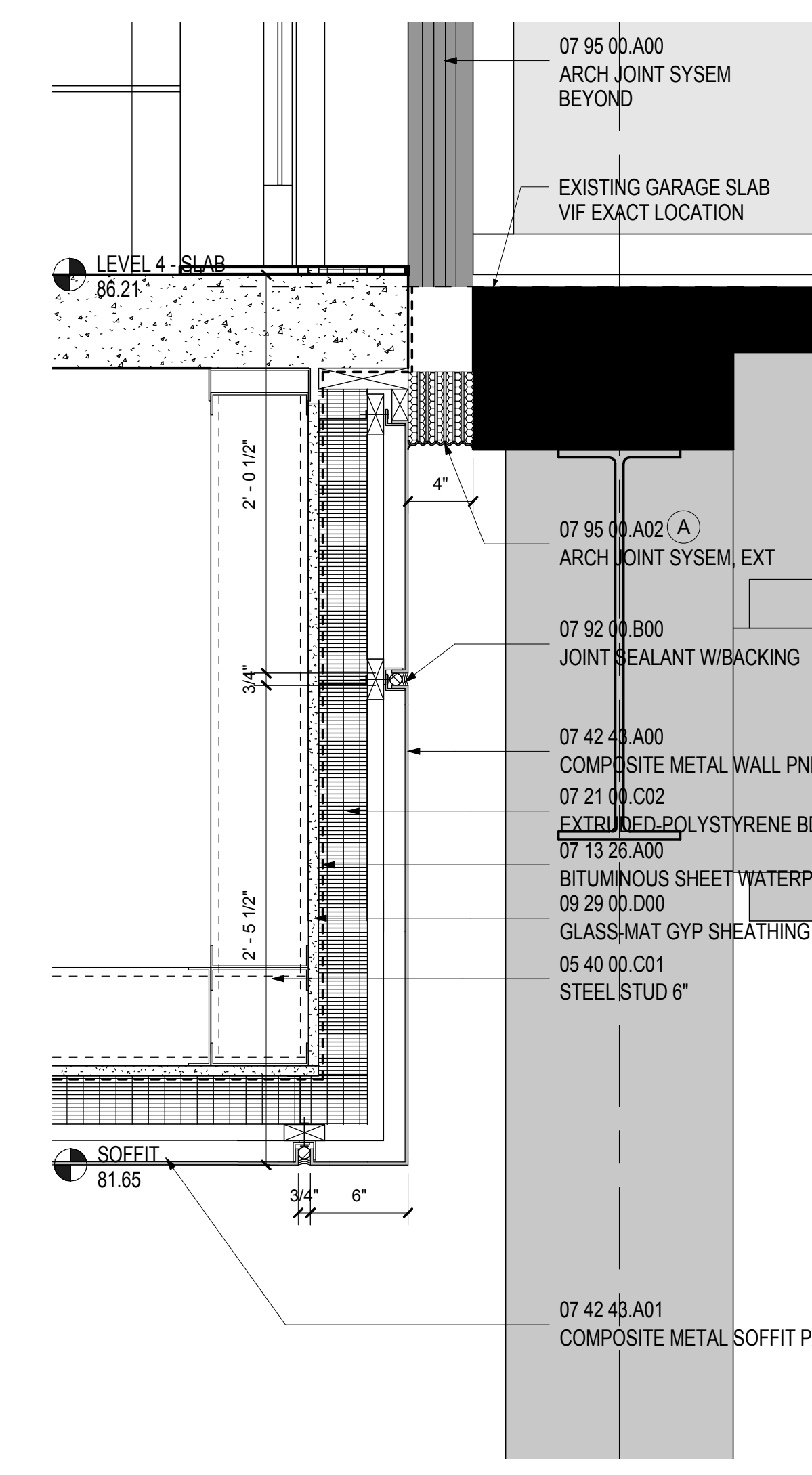


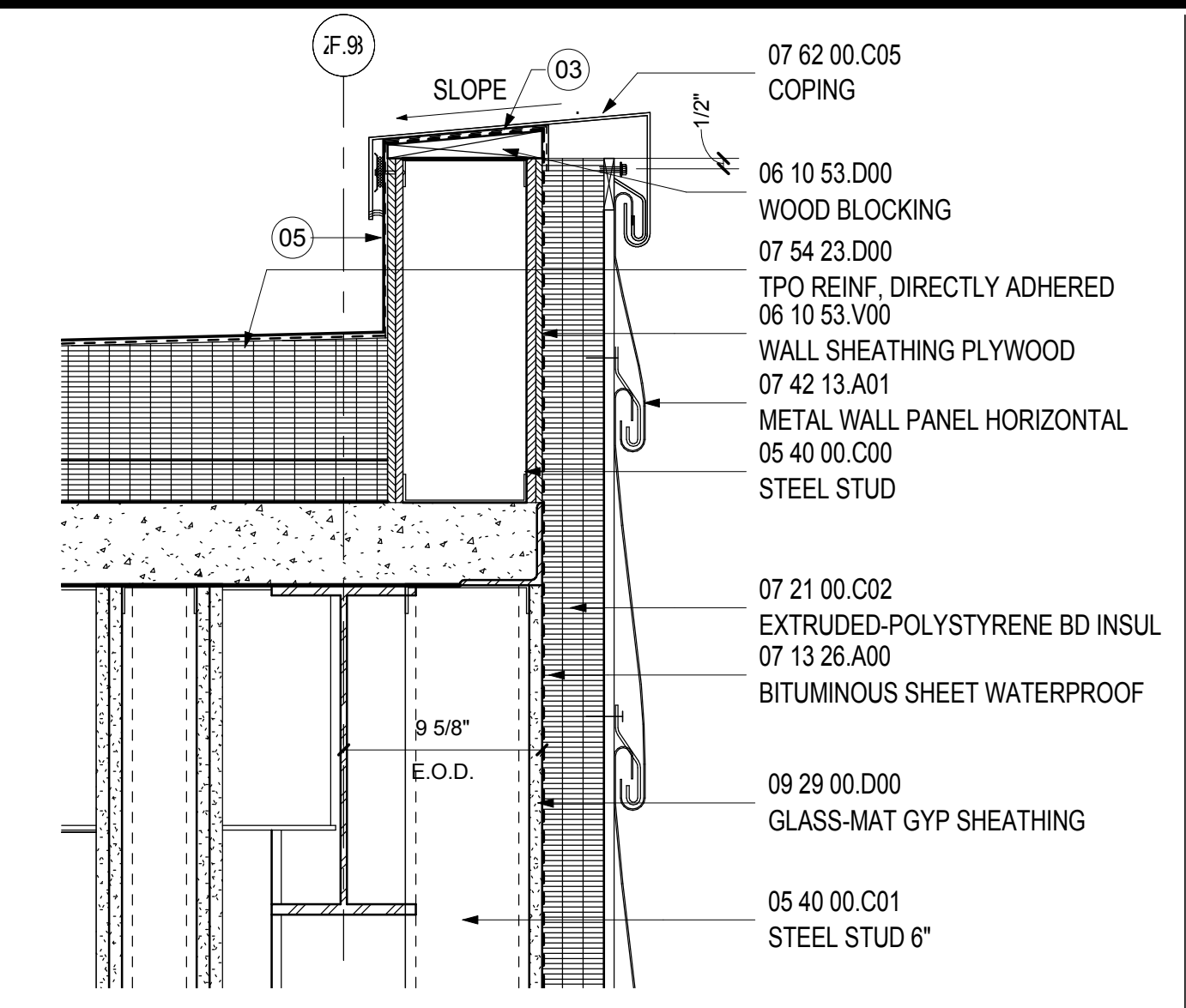
GARAGE VESTIBULE SECTION
SCALE: 3" = 1'-0" A11.24 17



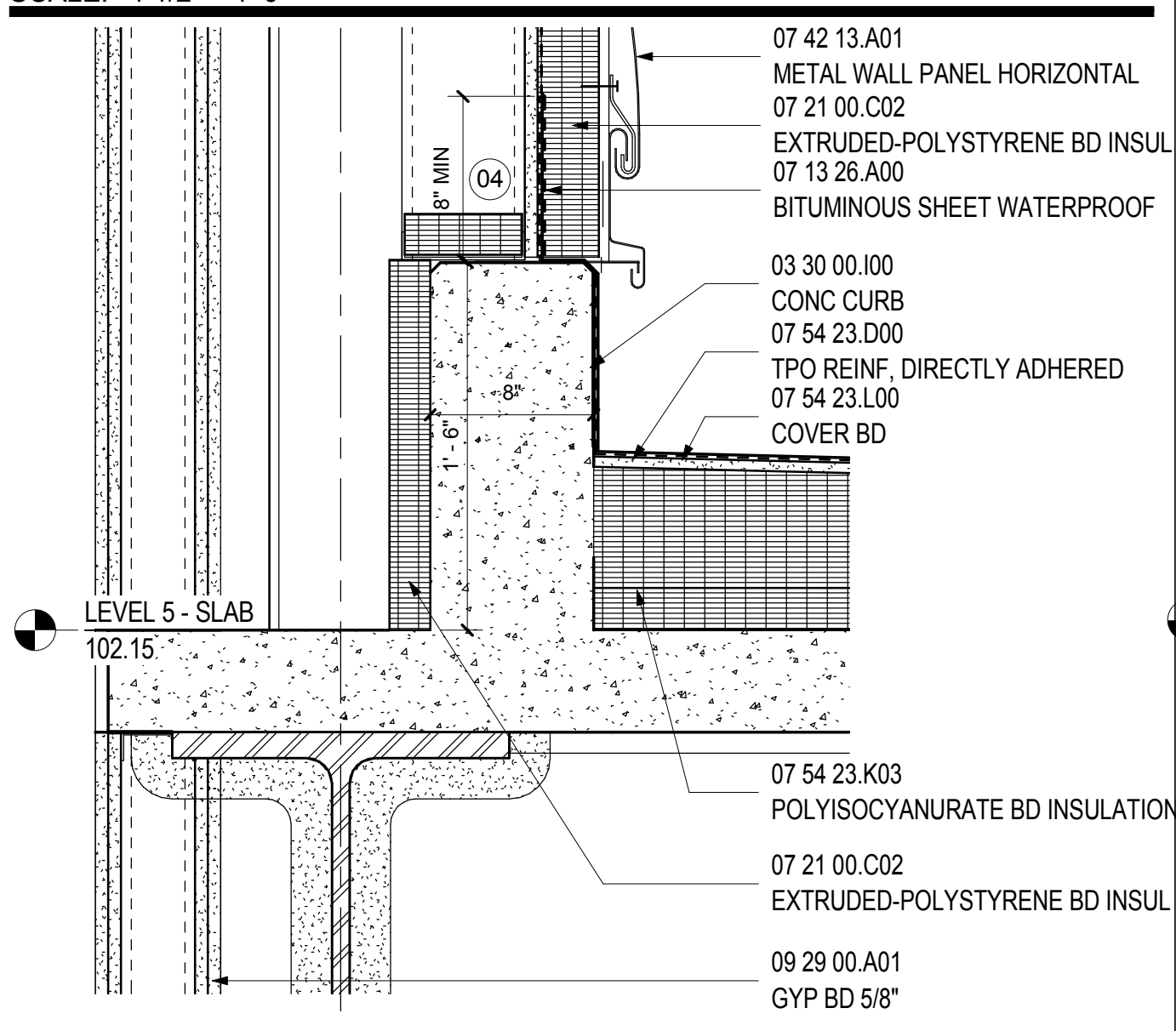
SECTION AT GARAGE LINK PARAPET
SCALE: 1 1/2" = 1'-0" A09.23 15



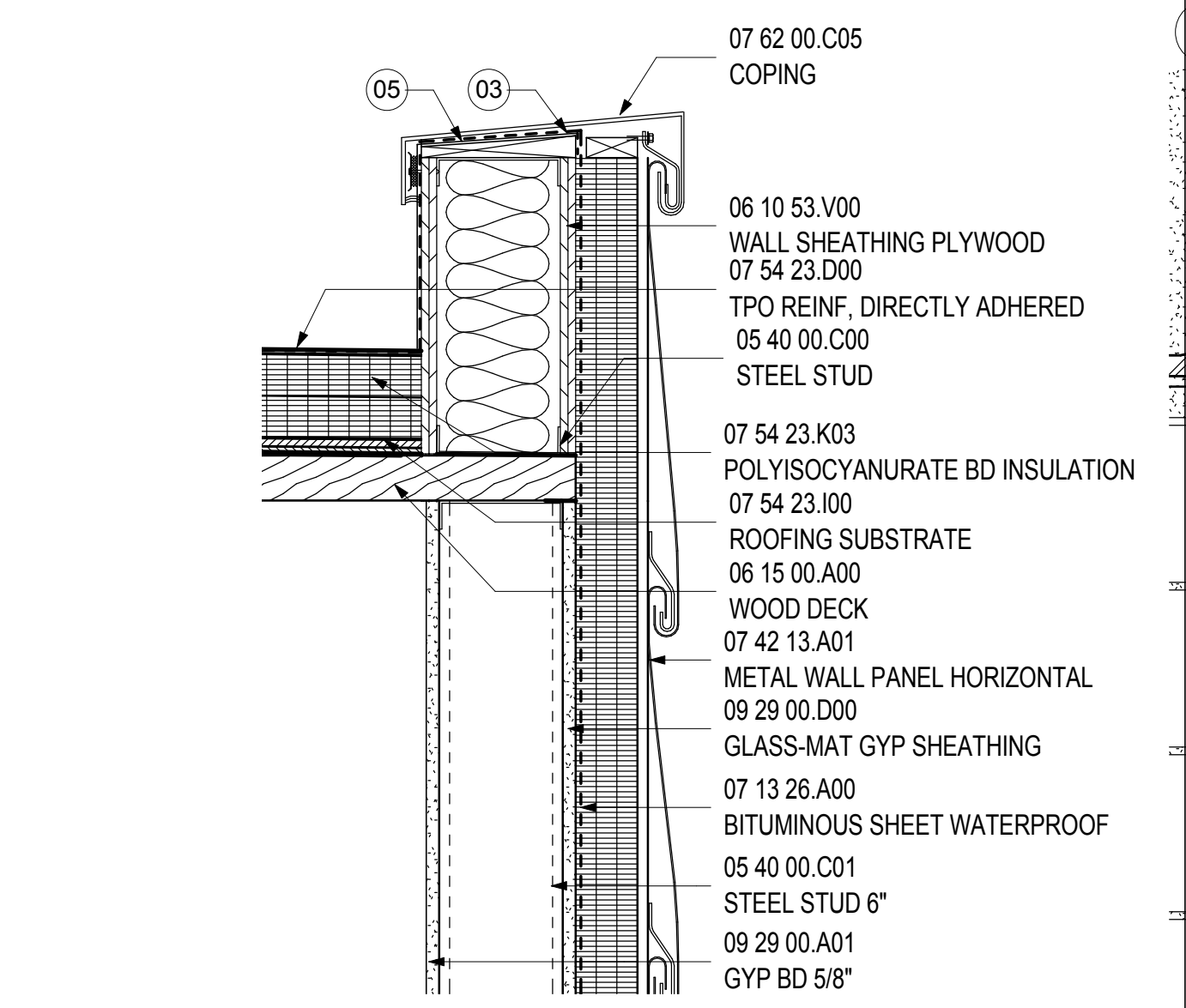
GARAGE CONNECTOR
SCALE: 1 1/2" = 1'-0" A09.23 16



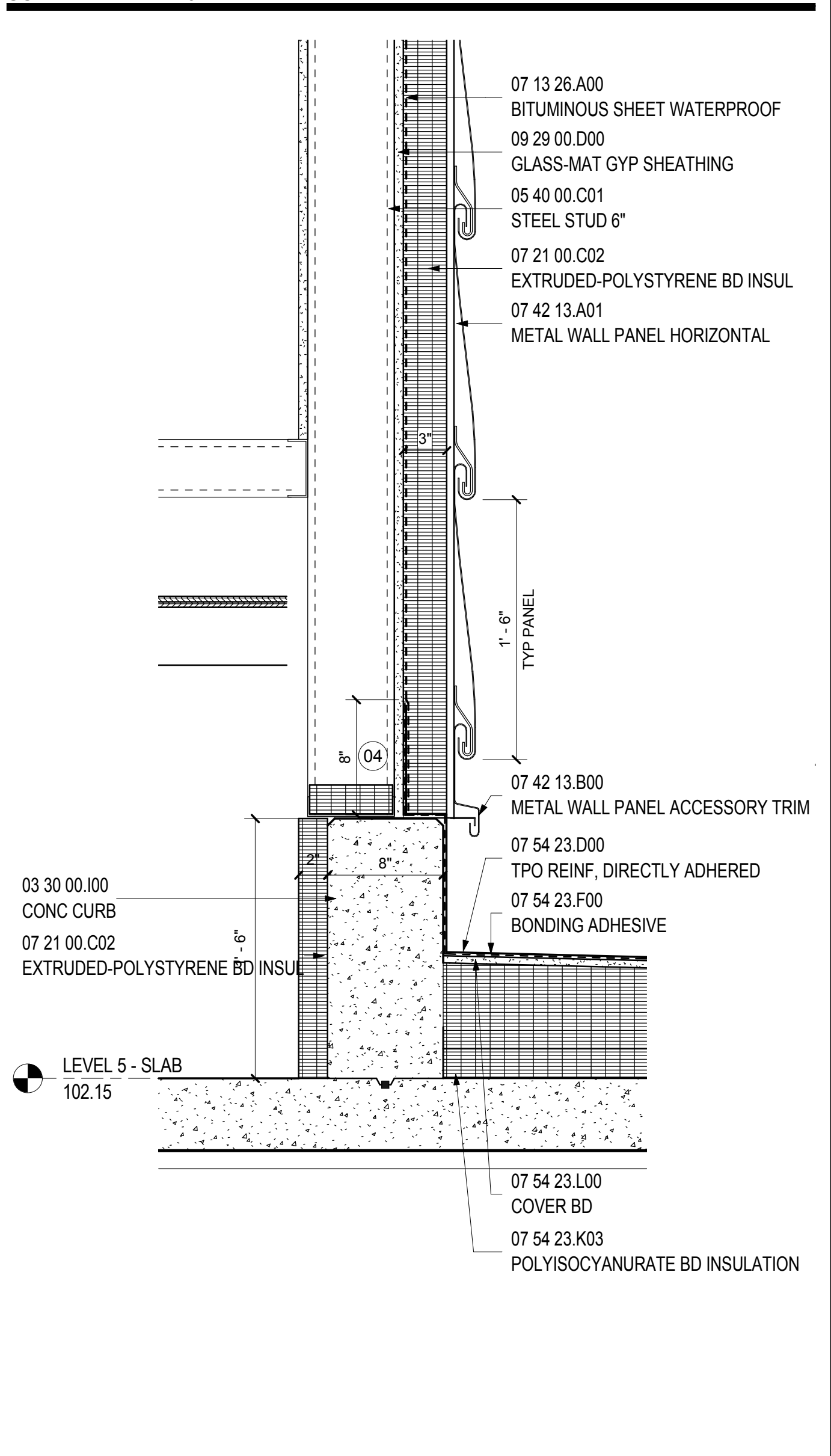
SECTION AT STAIR 16 PARAPET A
SCALE: 1 1/2" = 1'-0" A10.00 10



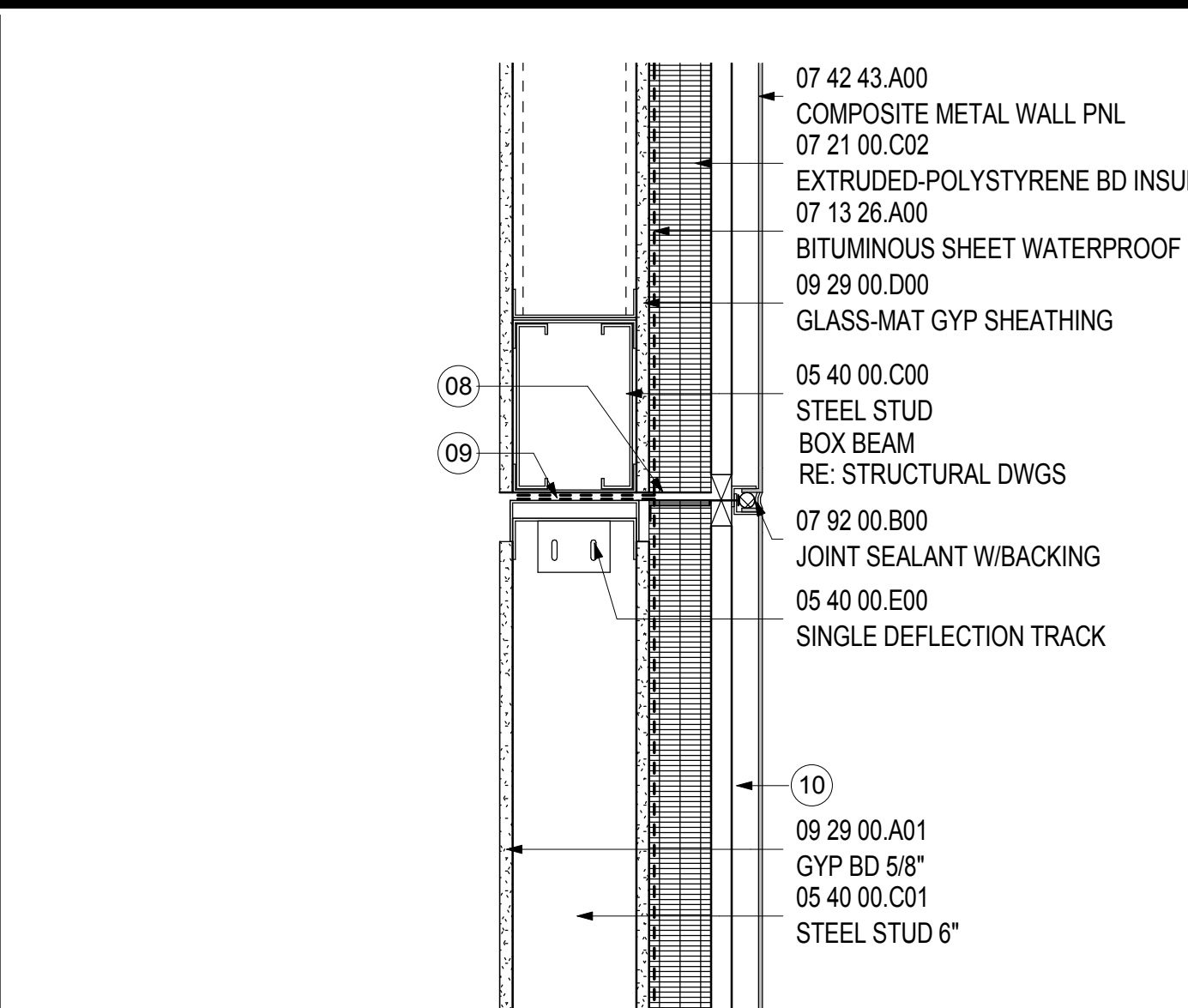
SECTION 1 AT LEVEL 5 STAIR 16
SCALE: 1 1/2" = 1'-0" A10.00 11



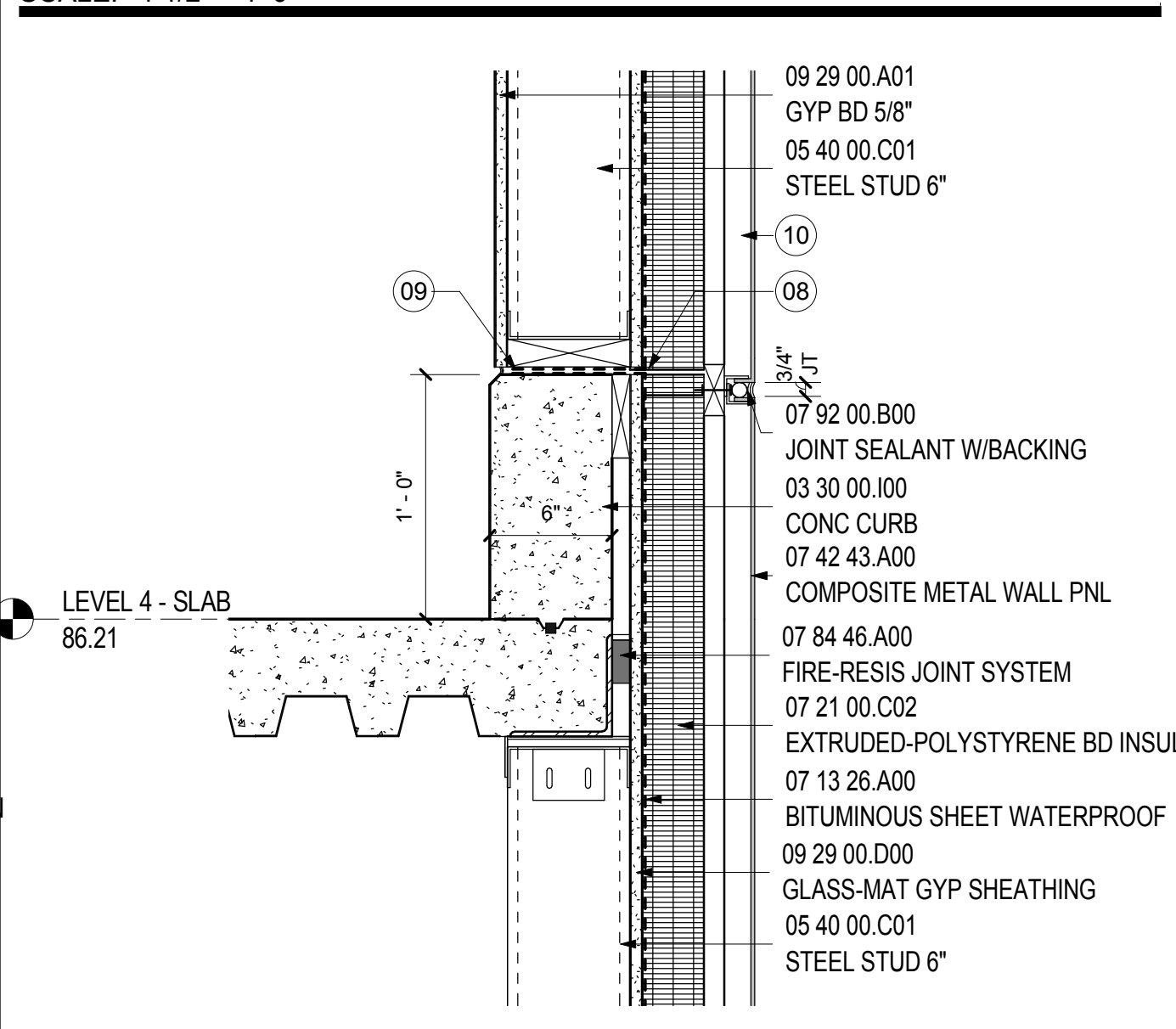
SECTION AT PARAPET WOOD ROOF
SCALE: 1 1/2" = 1'-0" A09.24 12



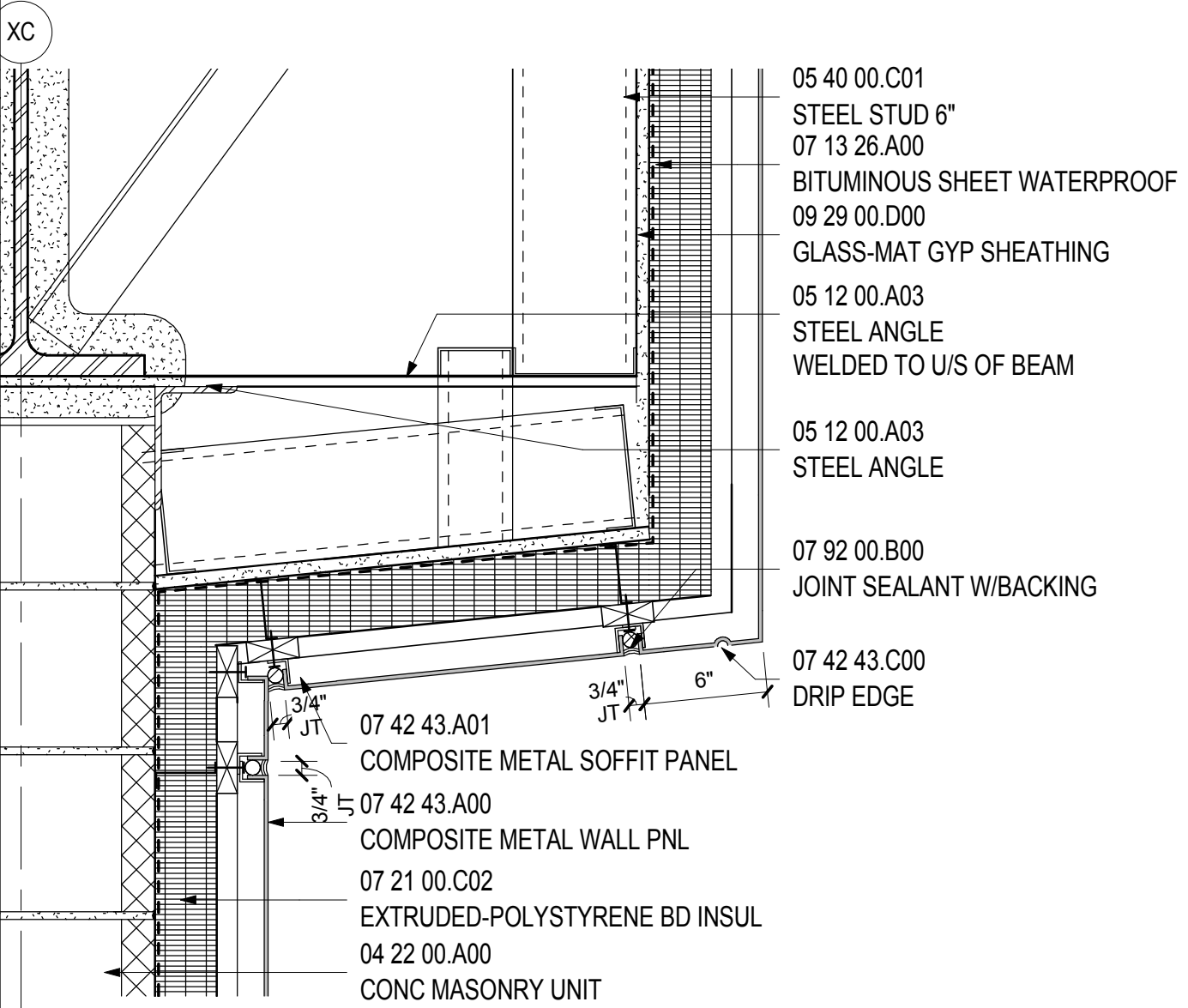
SECTION AT LEVEL 5 STAIR 18
SCALE: 1 1/2" = 1'-0" A09.24 13



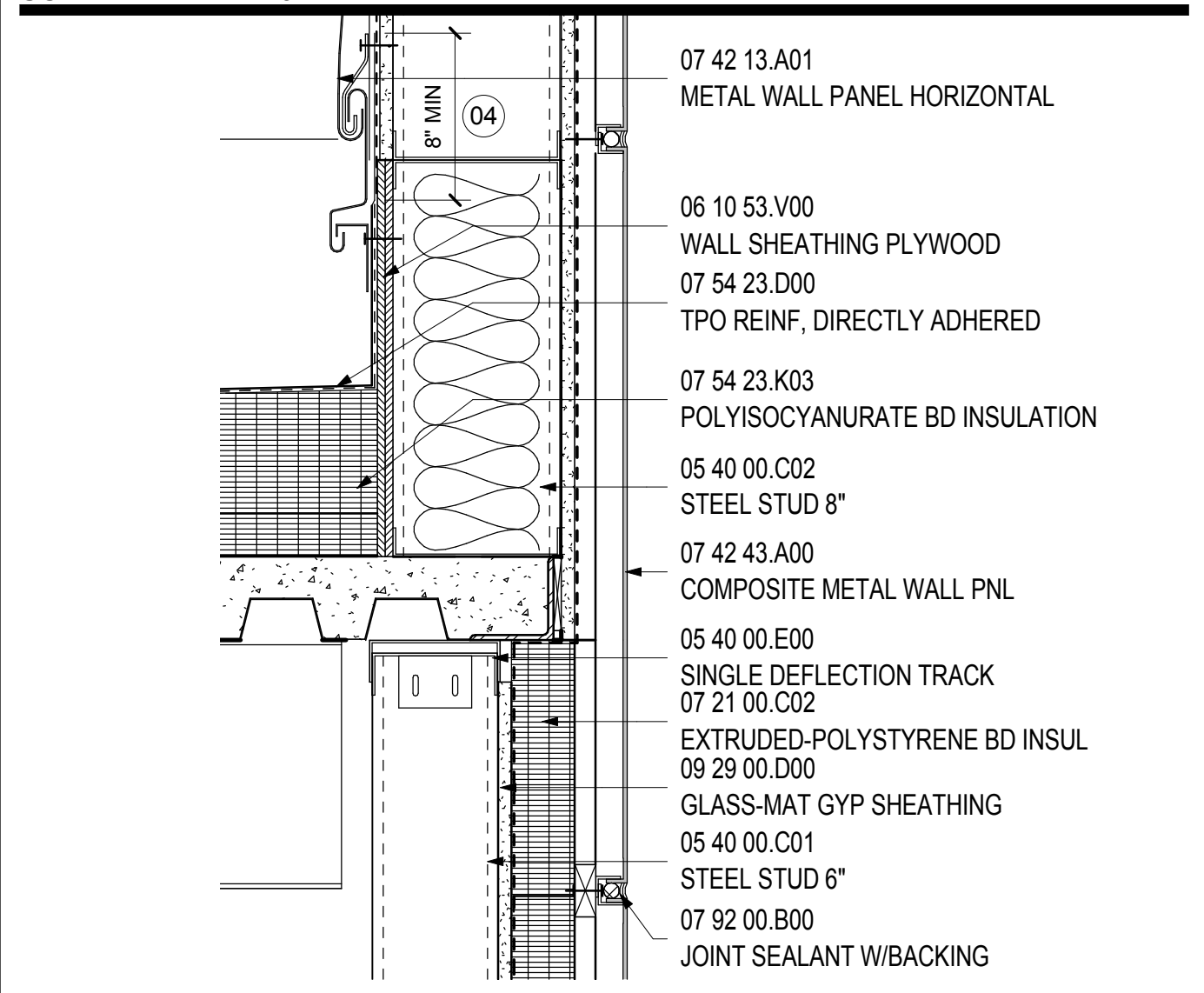
SECTION AT LEVEL 4 ACCESS PANELS
SCALE: 1 1/2" = 1'-0" A09.21 5



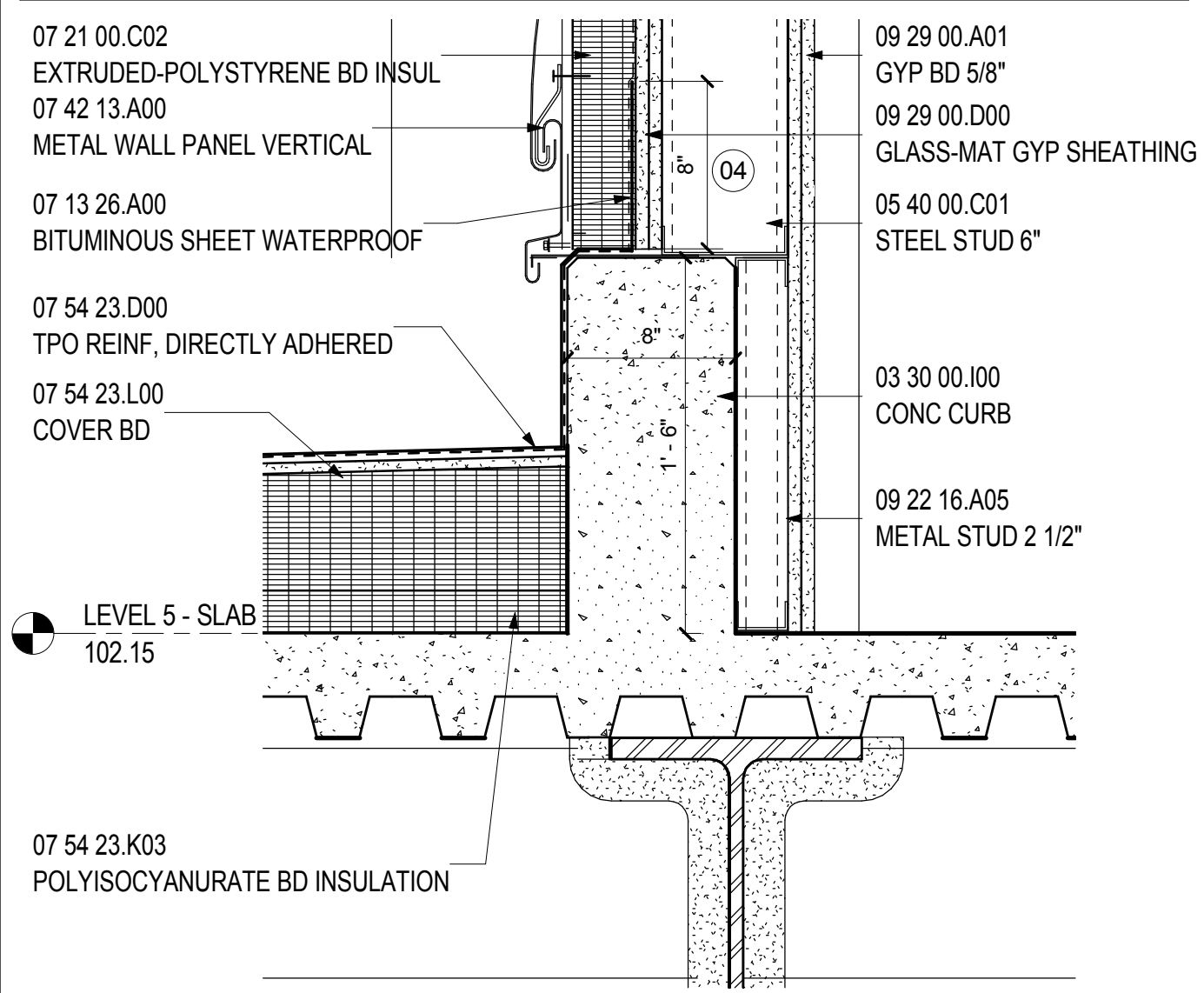
SECTION AT LEVEL 4 ACCESS PANELS
SCALE: 1 1/2" = 1'-0" A09.21 6



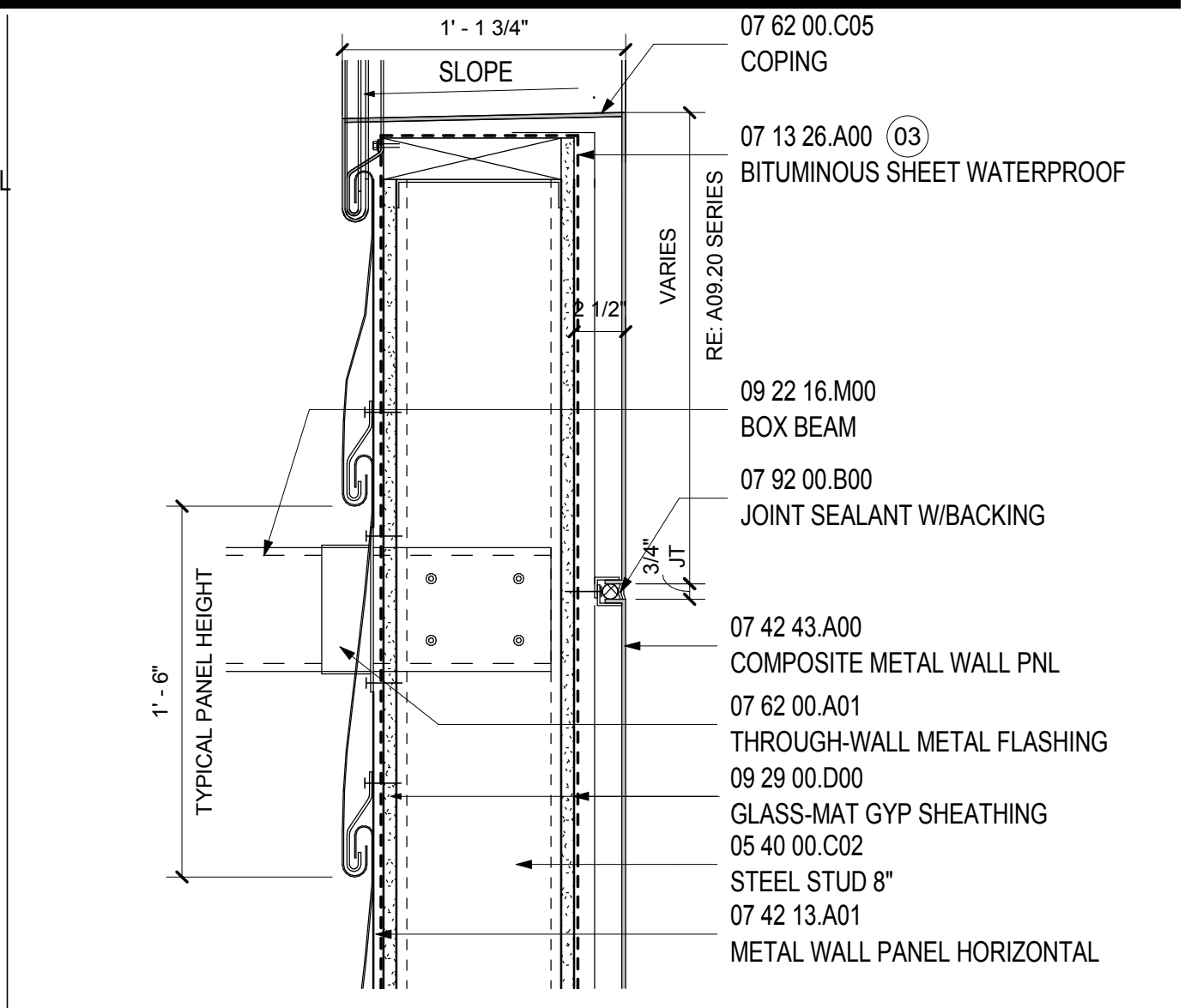
SECTION 2 AT METAL SOFFIT
SCALE: 1 1/2" = 1'-0" A09.20 7



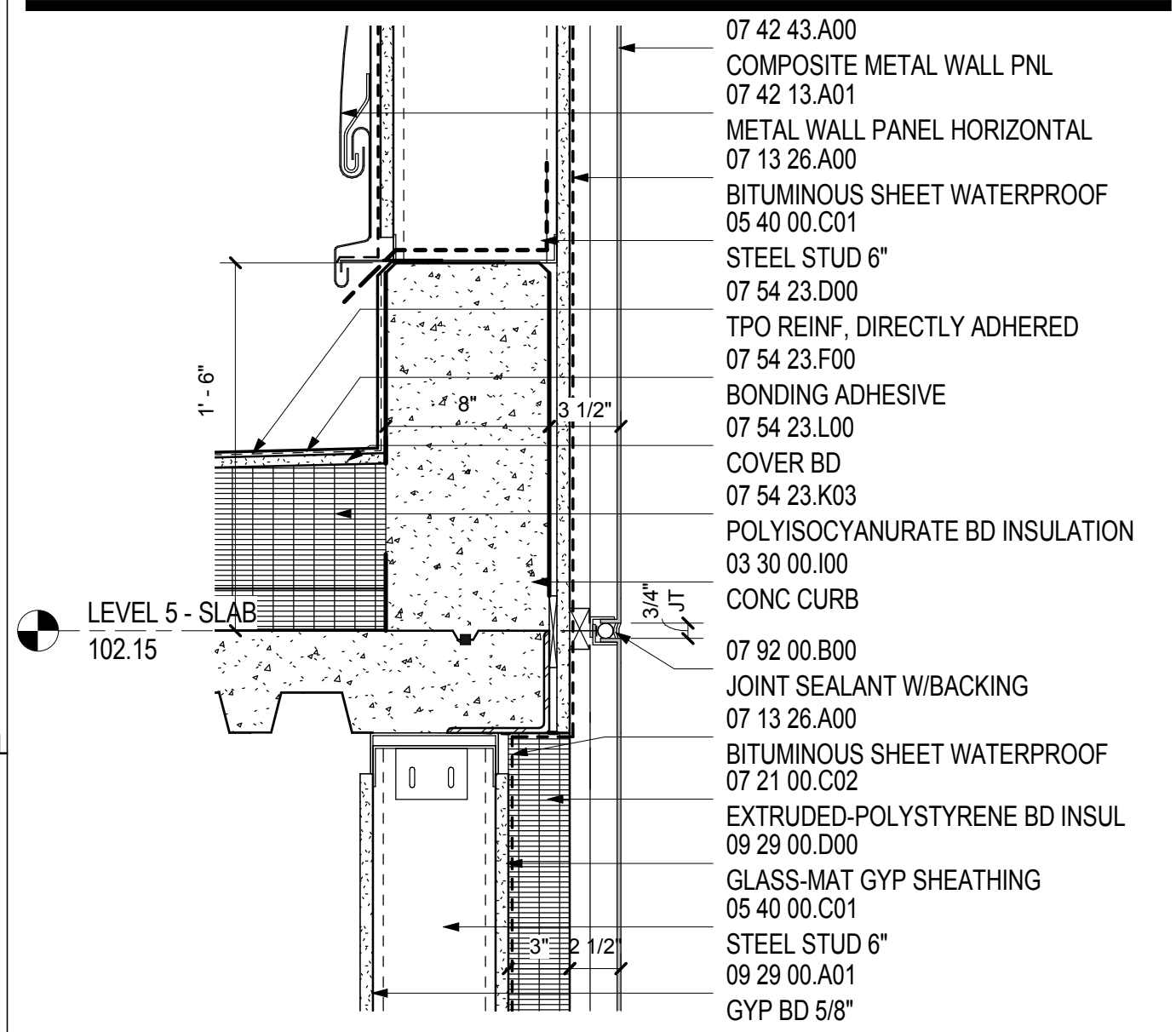
SECTION AT STAIR 16 ROOF
SCALE: 1 1/2" = 1'-0" A09.20 8



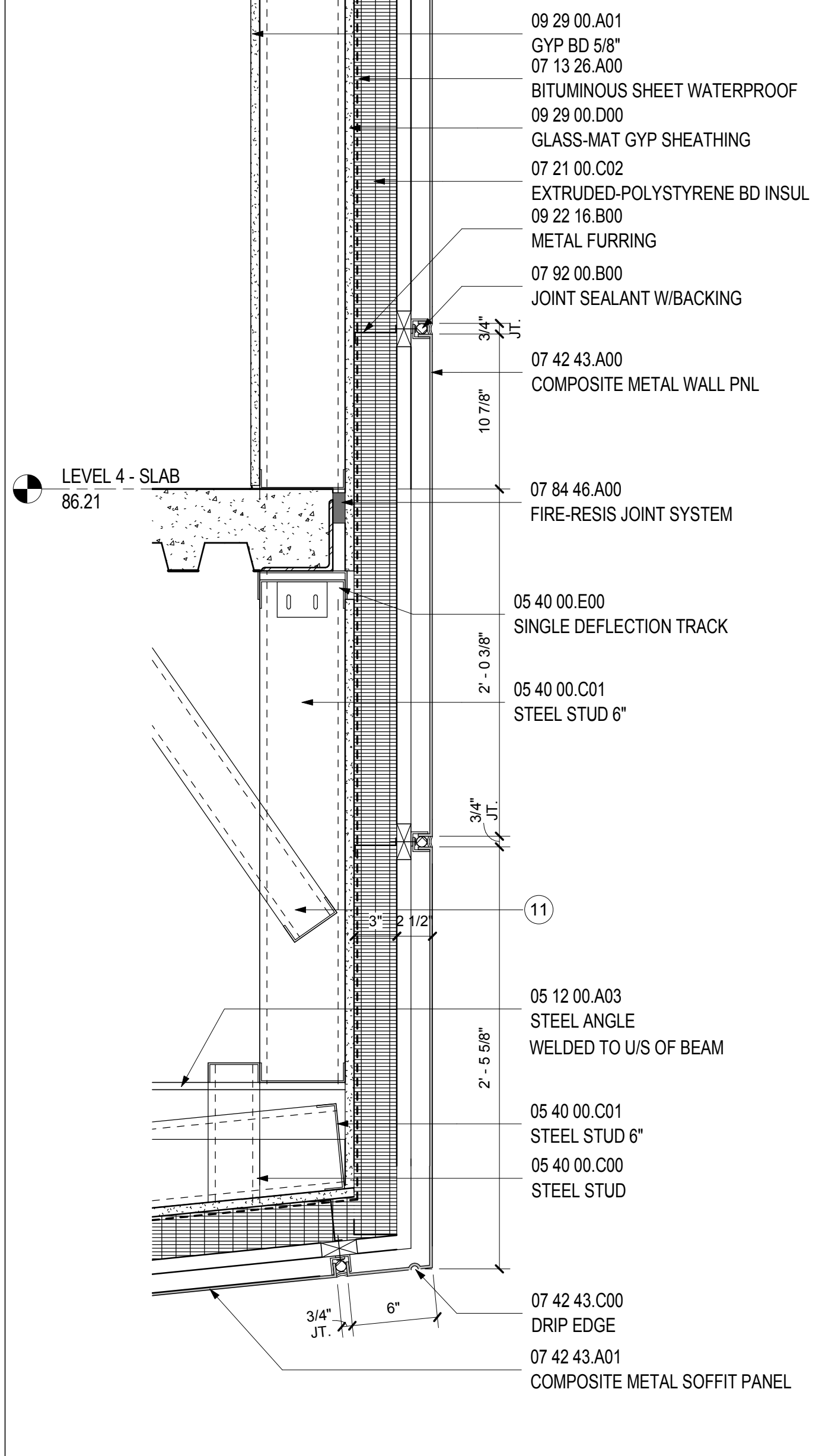
SECTION 2 AT LEVEL 5 STAIR 16
SCALE: 1 1/2" = 1'-0" A10.00 9



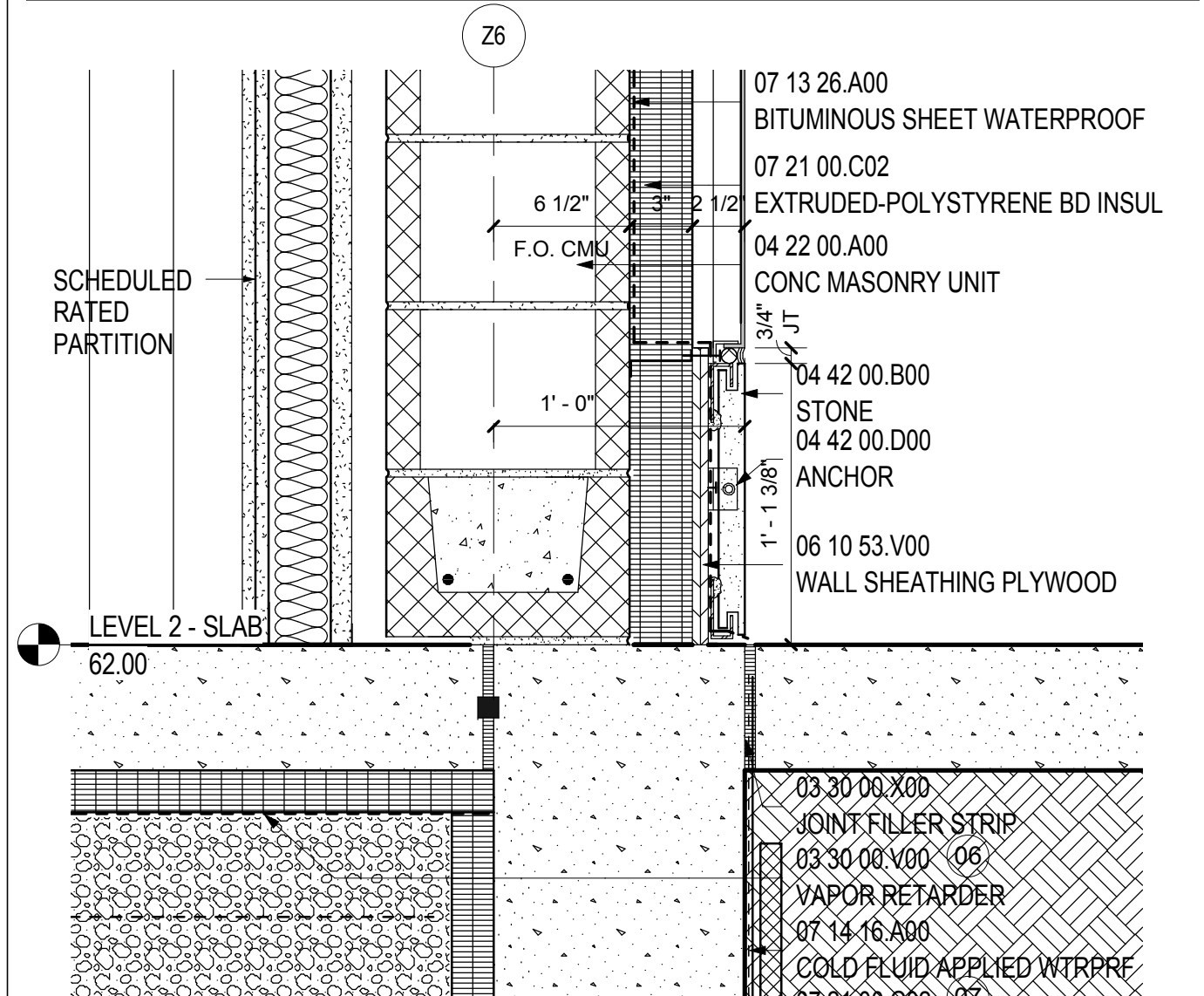
SECTION AT MECH PARAPET
SCALE: 1 1/2" = 1'-0" A09.20 1



SECTION AT LEVEL 5 MECH ROOF
SCALE: 1 1/2" = 1'-0" A09.21 2



SECTION 1 AT METAL SOFFIT
SCALE: 1 1/2" = 1'-0" A09.22 3



SECTION AT LEVEL 2 ELECT. ROOM
SCALE: 1 1/2" = 1'-0" A09.20 4

- SHEET NOTES**
- 01 FIN TUBE ENCLOSURE, RE: MECHANICAL DRAWINGS FOR FIN TUBE INFORMATION.
 - 02 SCHEDULED LIGHT FIXTURE
 - 03 WRAP SELF ADHERING SHEET WATERPROOFING OVER TOP OF SUBSTRATE.
 - 04 LAP SELF-ADHERING SHEET WATERPROOFING 8" MIN OVER TPO MEMBRANE ROOFING
 - 05 WRAP TPO MEMBRANE ROOFING OVER BLOCKING UNDER COPING.
 - 06 PROVIDE VAPOR BARRIER UNDER ALL SLABS ON GRADE, RE: STRUCTURAL DRAWINGS FOR MORE INFORMATION.
 - 07 PROVIDE 2" RIGID INSULATION UNDER ALL SLABS ON GRADE.
 - 08 STOP INSULATION: GYPSUM SHEATHING AND WATERPROOFING AT TOP OF CURB FOR REMOVABLE PANELS
 - 09 WRAP WATERPROOFING INTO FRAMED AREA OF REMOVABLE PANELS
 - 10 REMOVABLE "KNOCK OUT" METAL WALL PANELS, RE: ELEVATION 4/A09.03 FOR EXTENT.
 - 11 BRACE AS REQUIRED

Portland International Jetport
1001 Westbrook Street
Portland, Maine 04102

2020 K Street, Northwest
Suite 200
Washington DC 20006
Telephone 202.721.5200
Facsimile 202.872.8587

Gensler

Issue	Date & Issue Description	By	Check
01	12/01/08		
02	01/23/09		
03	10/26/09		

Seal/Signature

Project Name
PJM Terminal Enhancement

Project Number
09-6395-000

Description
SECTION DETAILS - WALL TYPE A

Scale
As indicated

A12.10

© 2009 Gensler