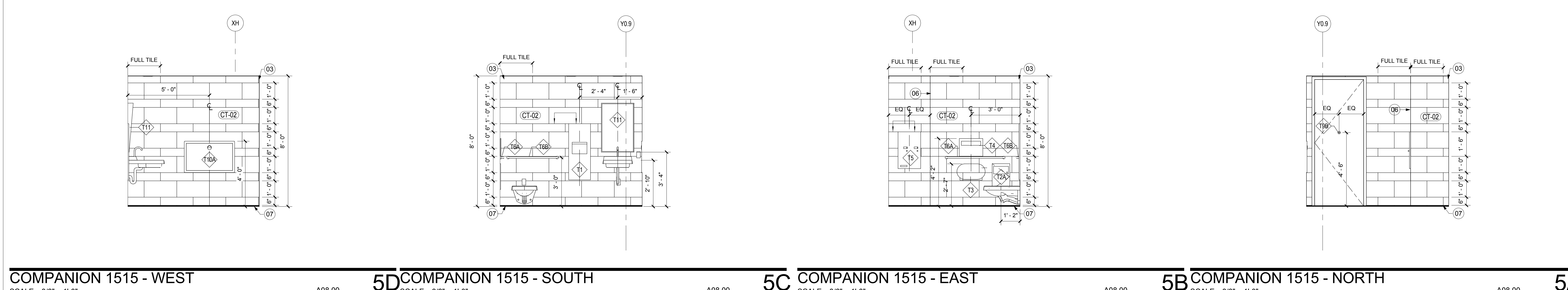
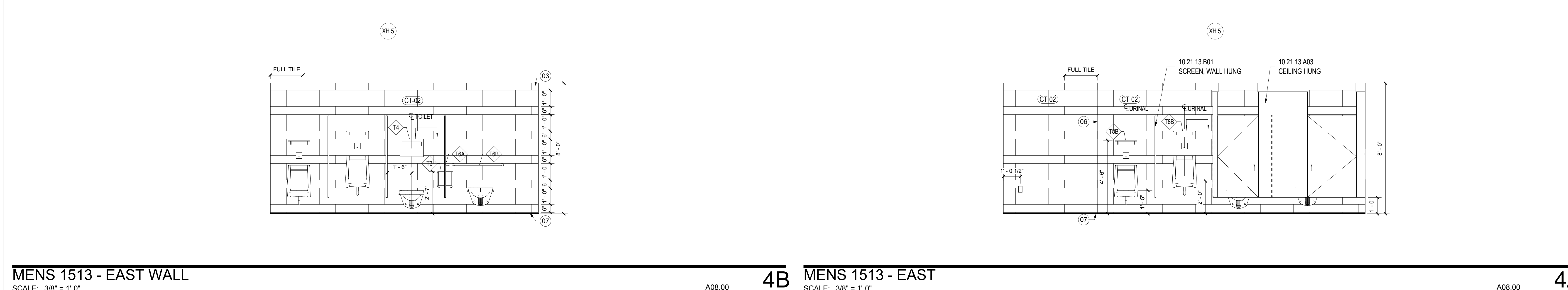
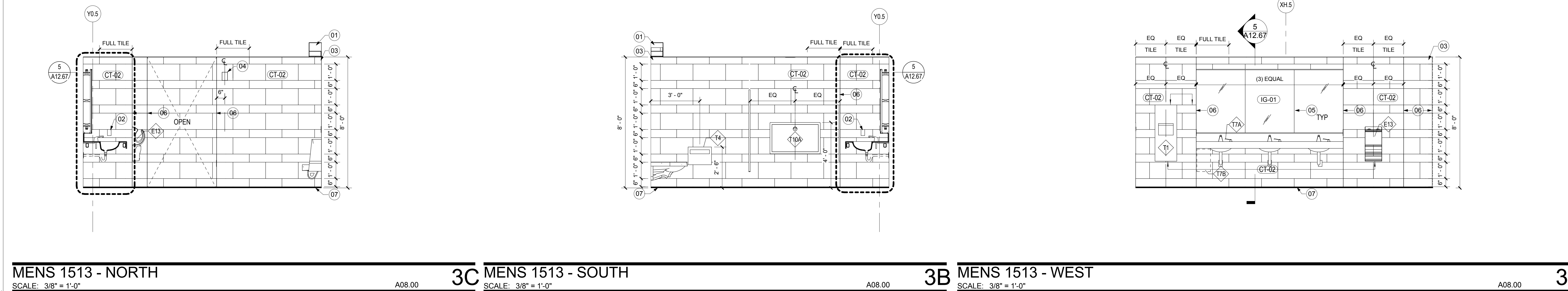
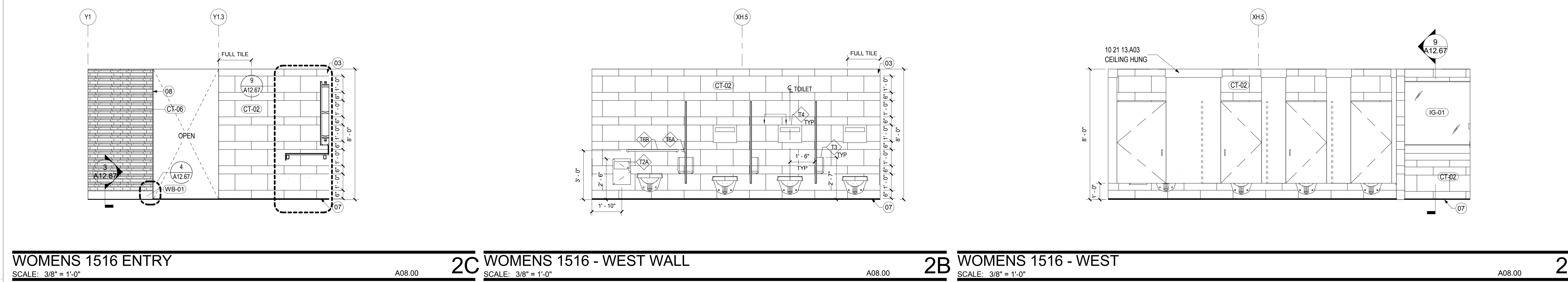
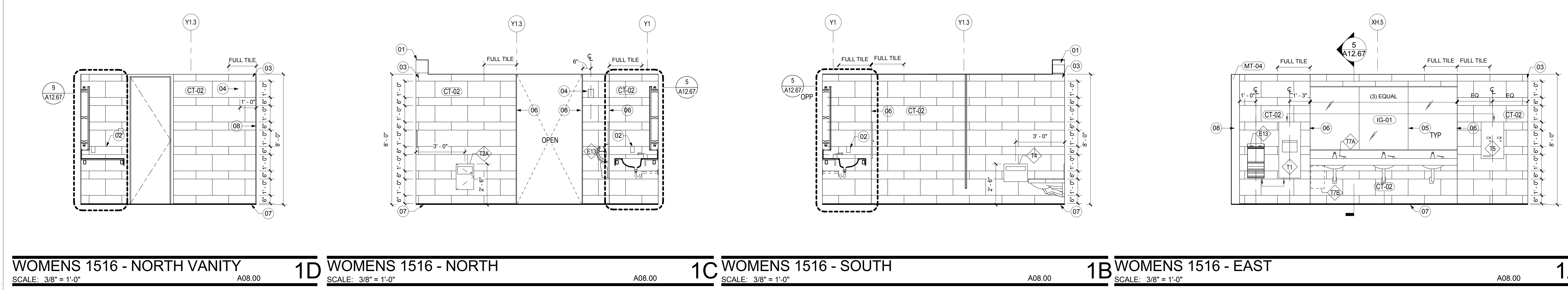


**SHEET NOTES**

- 01 SCHEDULED LIGHT FIXTURE.
- 02 GFI RECEPTACLE MOUNTED VERTICALLY AT 42" AFF MAX. ALIGN T.O. RECEPTACLE WITH GROUT LINE. RE: DETAIL FOR EXACT LOCATION HORIZONTALLY.
- 03 LOCATION OF CUT TILE.
- 04 STROBE MOUNTED AT 80" AFF CENTERLINE OF DEVICE.
- 05 SEAM OF MIRROR.
- 06 STAINLESS STEEL EDGE PROTECTION PROFILES TYPICAL AT ALL OUTSIDE CORNERS OF TILE. RE: DETAIL 10/A12.67.
- 07 STAINLESS STEEL COVE SHAPED WALL/FLOOR TRANSITION. RE: DETAIL 8/A12.67.
- 08 STAINLESS STEEL MT-04 END CAP.



**GENERAL NOTES**

- A ALL DIMENSIONS ARE TO FINISHED FACE OF MATERIAL. COORDINATE WITH FINISH THICKNESS.
- B RE: A00.13 FOR ACCESSORY MOUNTING HEIGHTS U.O.M. ON ELEVATIONS.
- C RE: PROJECT MANUAL FOR ACCESSORY SCHEDULE AND FURTHER INFORMATION.
- D RE: PLUMBING SPECIFICATIONS FOR INSTALLATION OF ALL PLUMBING EQUIPMENT.
- E RE: PROJECT MANUAL FOR LIGHTING SPECIFICATIONS.
- F ALL PIPES UNDER LAVATORY TO BE INSULATED. RE: PROJECT MANUAL FOR MORE INFORMATION.
- G TOILET PARTITIONS TO BE CEILING HUNG. RE: PROJECT MANUAL FOR MORE INFORMATION.

Issue	Date & Issue Description	By	Check
01	01/22/09		
02	95% CONSTRUCTION DOCUMENTS		
02	10/28/09		
	ISSUED FOR PERMIT		

Seal/Signature

Project Name  
PJM Terminal Enhancement

Project Number  
09.6395.000

Description  
INTERIOR ELEVATIONS

Scale  
As indicated

**A11.30**

© 2009 Gensler