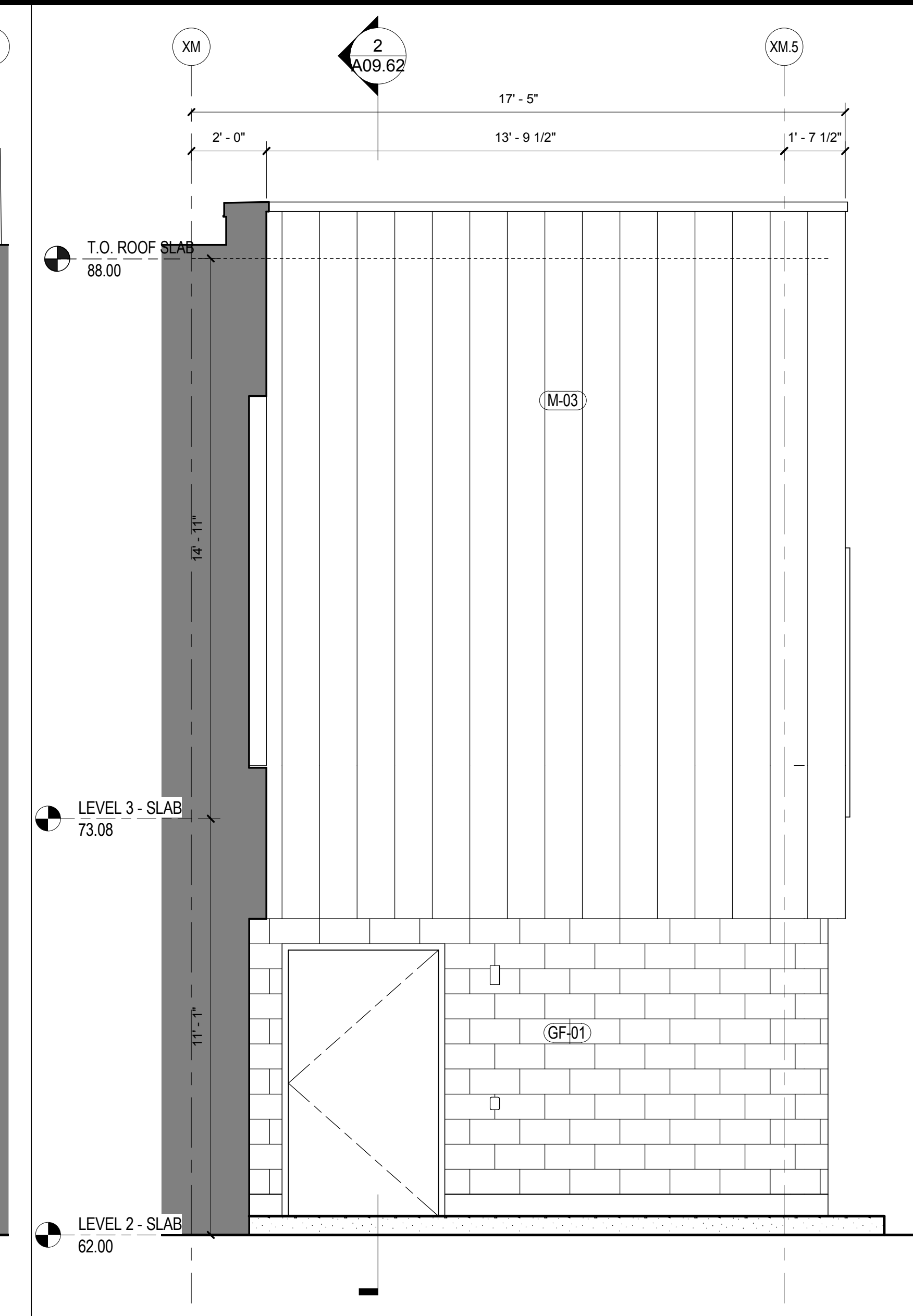
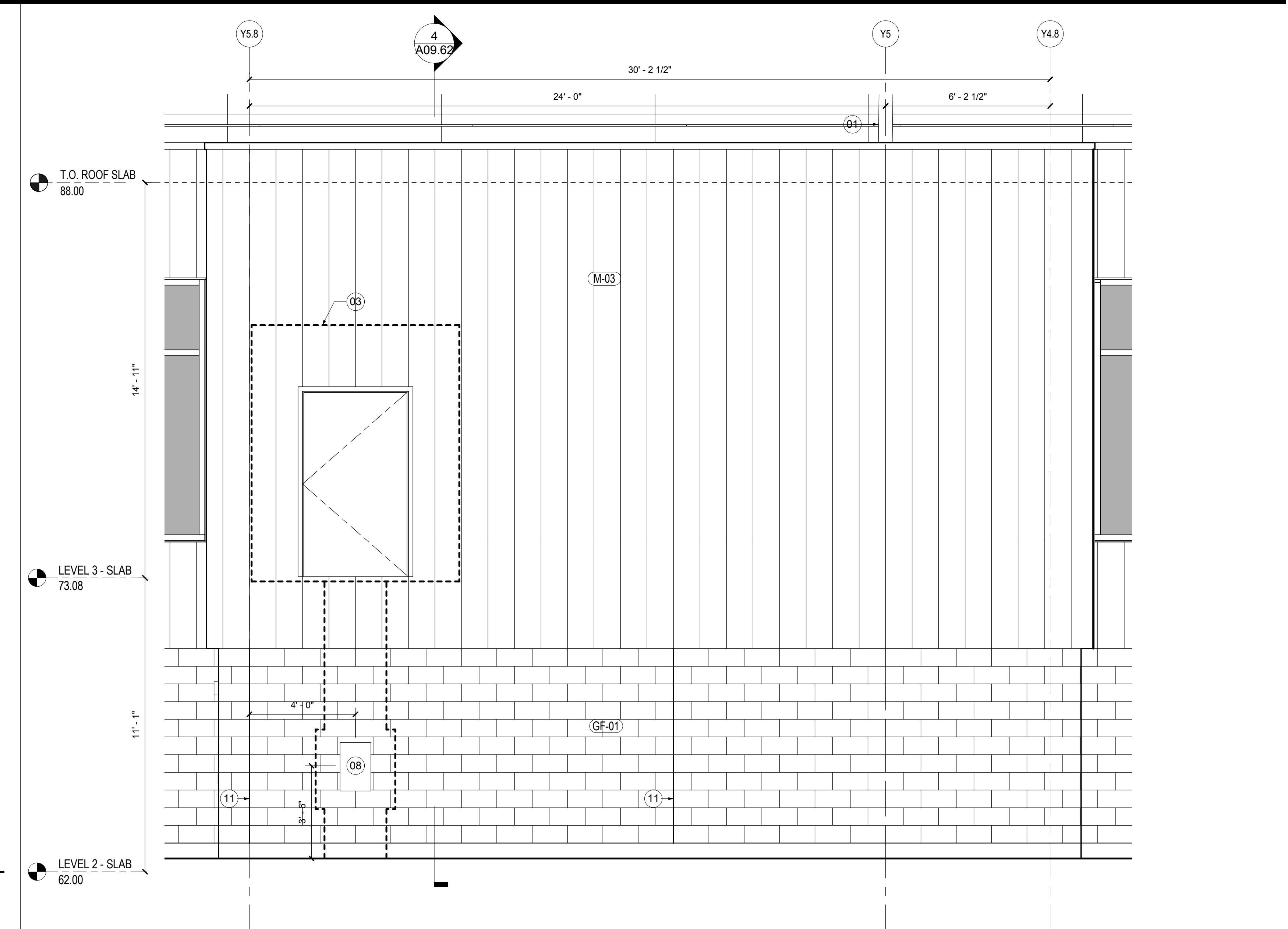


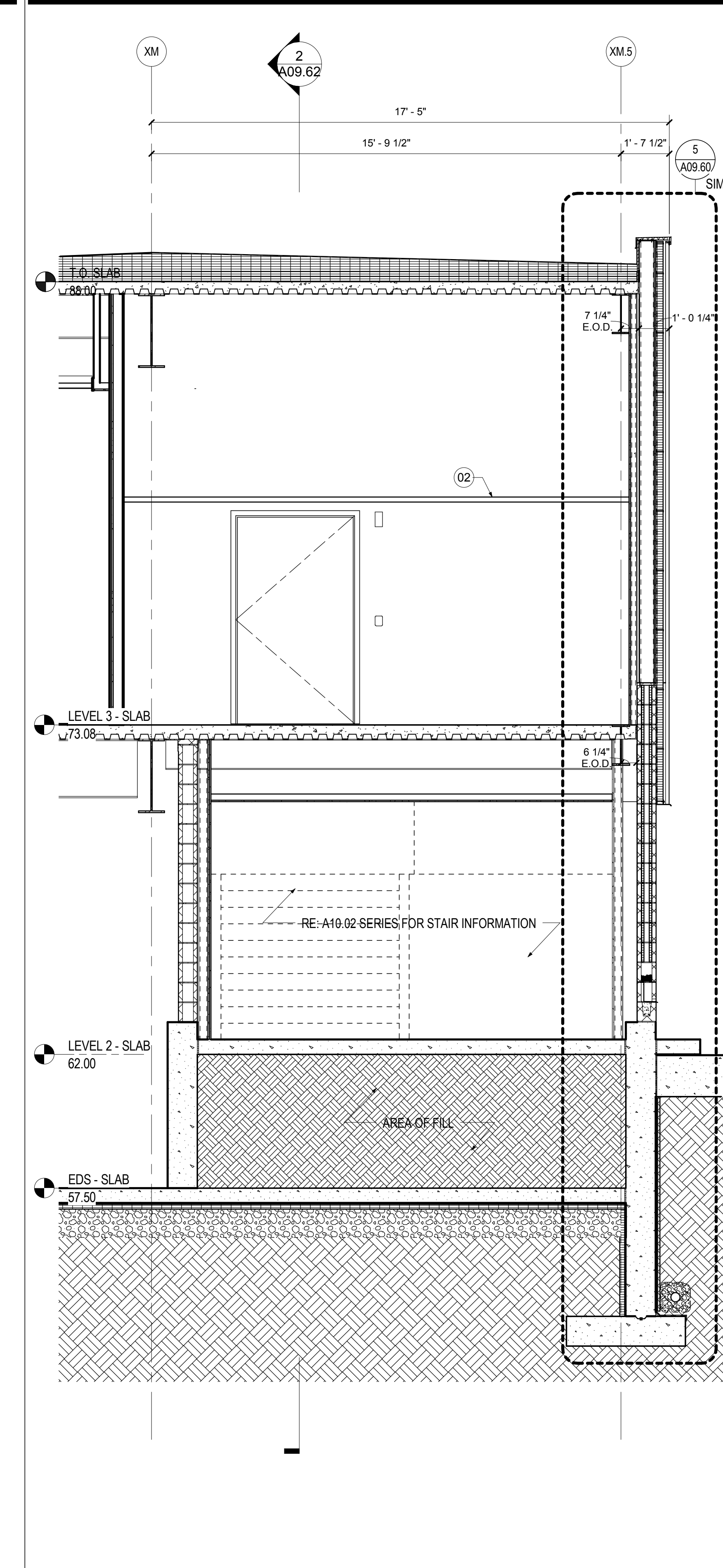
WALL TYPE E.2 - ELEVATION WEST
SCALE: 3/8" = 1'-0" A09.63



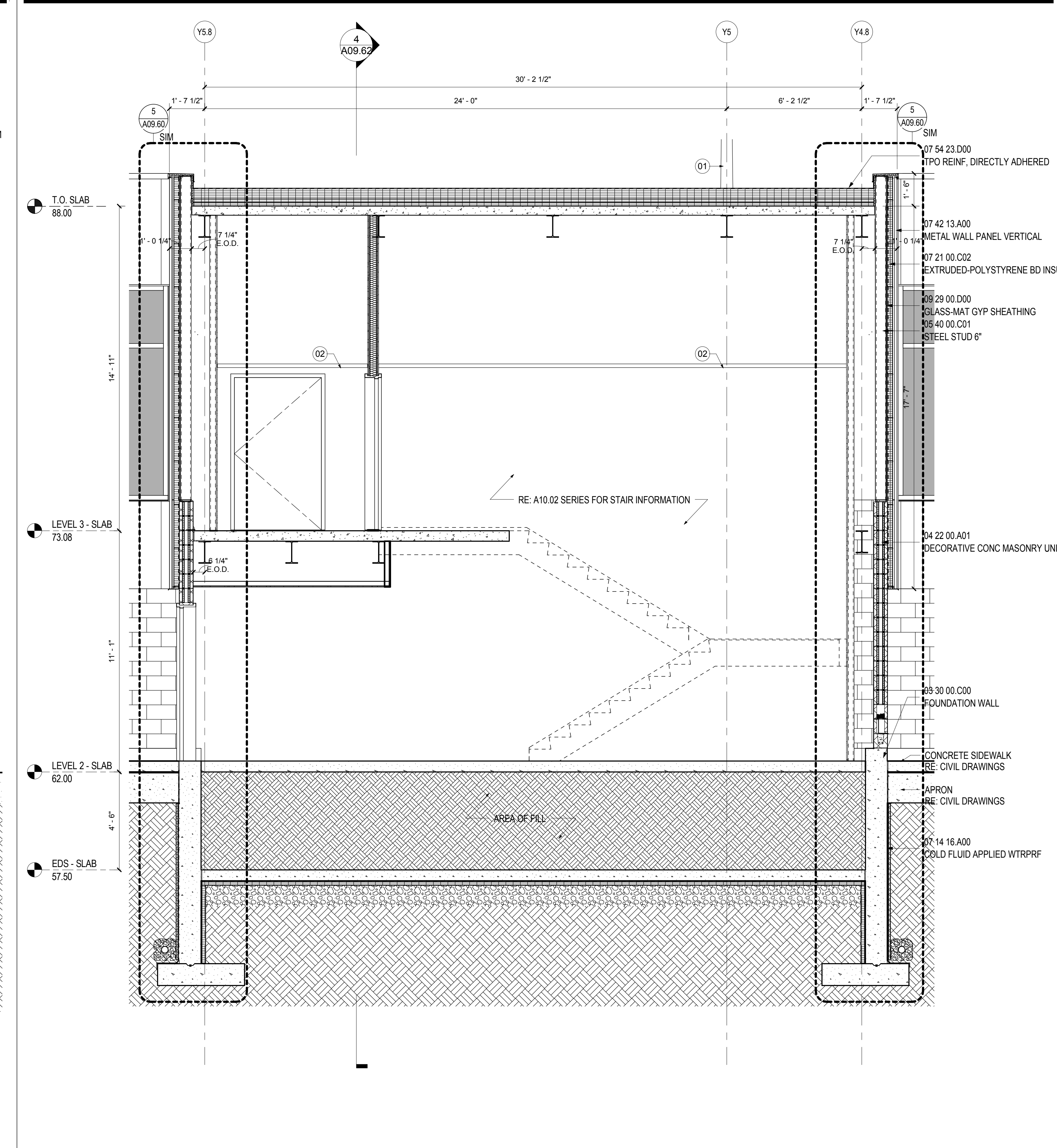
WALL TYPE E.2 - ELEVATION EAST
SCALE: 3/8" = 1'-0" A09.63



WALL TYPE E.2 - ELEVATION SOUTH
SCALE: 3/8" = 1'-0" A09.01



WALL TYPE E.2 - SECTION.
SCALE: 3/8" = 1'-0" A09.62



WALL TYPE E.2 - SECTION
SCALE: 3/8" = 1'-0" A04.01.05

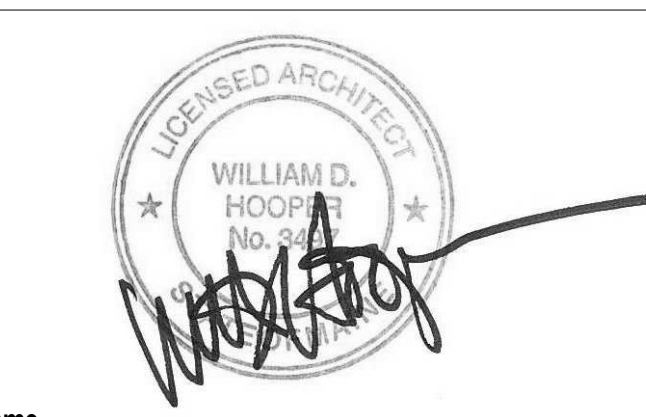
SHEET NOTES

- 01 APRON LIGHTING. RE: 10/A12.50 FOR ANCHOR DETAIL. RE: STRUCTURAL AND ELECTRICAL FOR MORE INFORMATION.
- 02 LINE OF CEILING. RE: A04 SERIES FOR MORE INFORMATION.
- 03 PASSENGER BOARDING BRIDGE. OWNER PROVIDED. INSTALLED BY CONTRACTOR
- 04 FIN TUBE ENCLOSURE. RE: MECHANICAL DRAWINGS FOR FIN TUBE INFORMATION.
- 05 RAIN LEADER WHERE OCCURS. RE: PLUMBING DRAWINGS FOR LOCATIONS.
- 06 EXPANSION JOINT
- 07 CONTRACTION/CONSTRUCTION JOINT. RE: STRUCTURAL DRAWINGS FOR MORE INFORMATION.
- 08 LOCATION OF PBB DISCONNECT SWITCH. RE: ELECTRICAL DRAWINGS FOR MORE INFORMATION.
- 09 LINE OF SOFFIT ABOVE
- 10 LINE OF SIDEWALK BELOW. RE: CIVIL DRAWINGS FOR MORE INFORMATION.
- 11 VERTICAL CONTROL JOINTS AT CMU 16' - 0" O.C. WITH COLUMN LINE
- 12 PIPE BOLLARD. RE: DETAIL 11/A12.15
- 13 TRASH COMPACTOR (BY OTHERS)
- 14 TRENCH DRAIN AT BOTTOM OF RAMP. RE: CIVIL DRAWINGS FOR MORE INFORMATION
- 15 RETAINING WALL. RE: CIVIL DRAWINGS FOR MORE INFORMATION.

Portland International
Jetport
1001 Westbrook Street
Portland, Maine 04102

Gensler
2020 K Street, Northwest
Suite 200
Washington DC 20006
Telephone 202.721.5200
Facsimile 202.872.8587

Issue	Date & Issue Description	By	Check
01	12/01/08		
02	75% CONSTRUCTION DOCUMENTS		
02	01/23/09		
03	95% CONSTRUCTION DOCUMENTS		
03	10/26/09		
	ISSUED FOR PERMIT		

Seal/Signature


Project Name
PJM Terminal Enhancement

Project Number
09.6395.000

Description
WALL TYPE E.2

Scale
3/8" = 1'-0"

A09.62

© 2009 Gensler