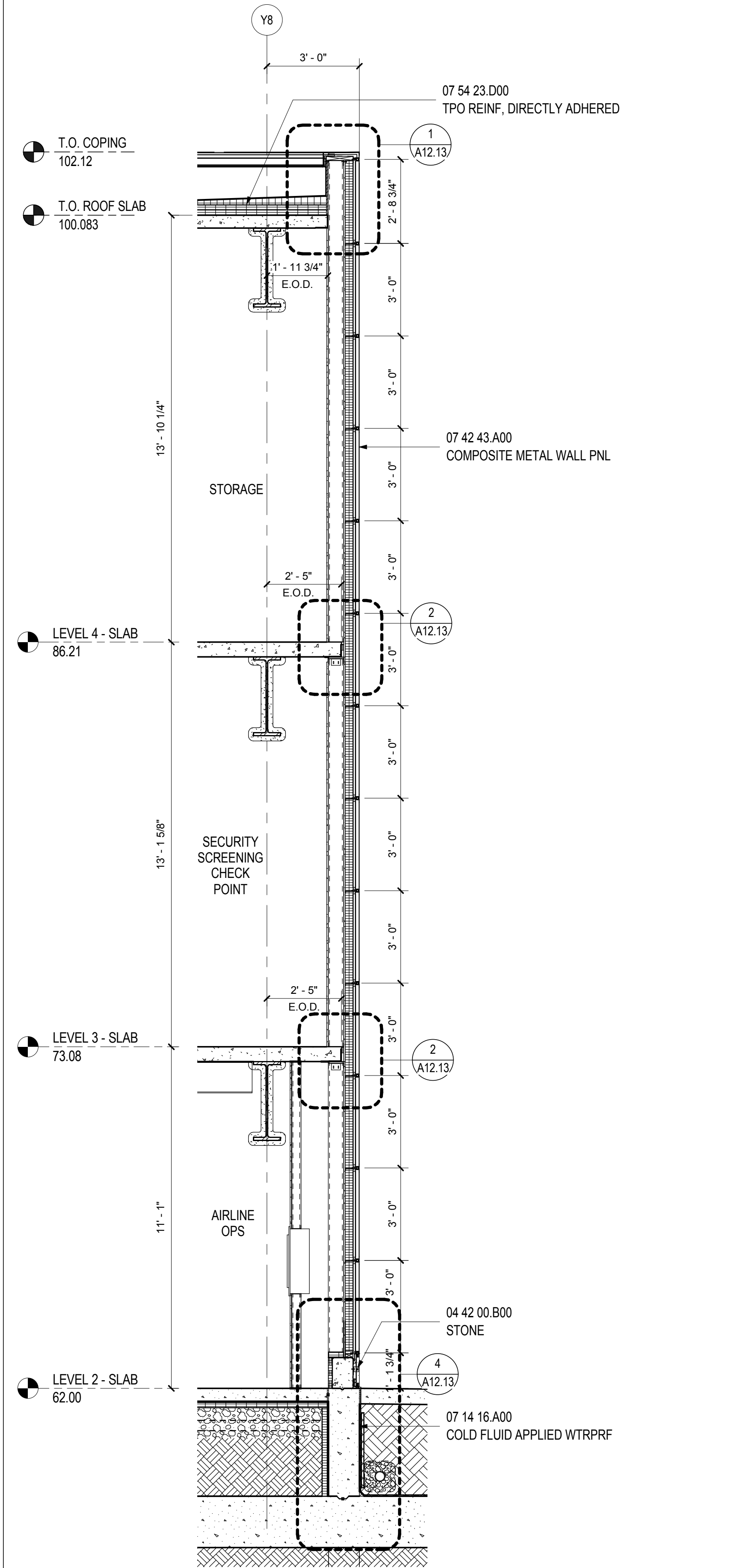


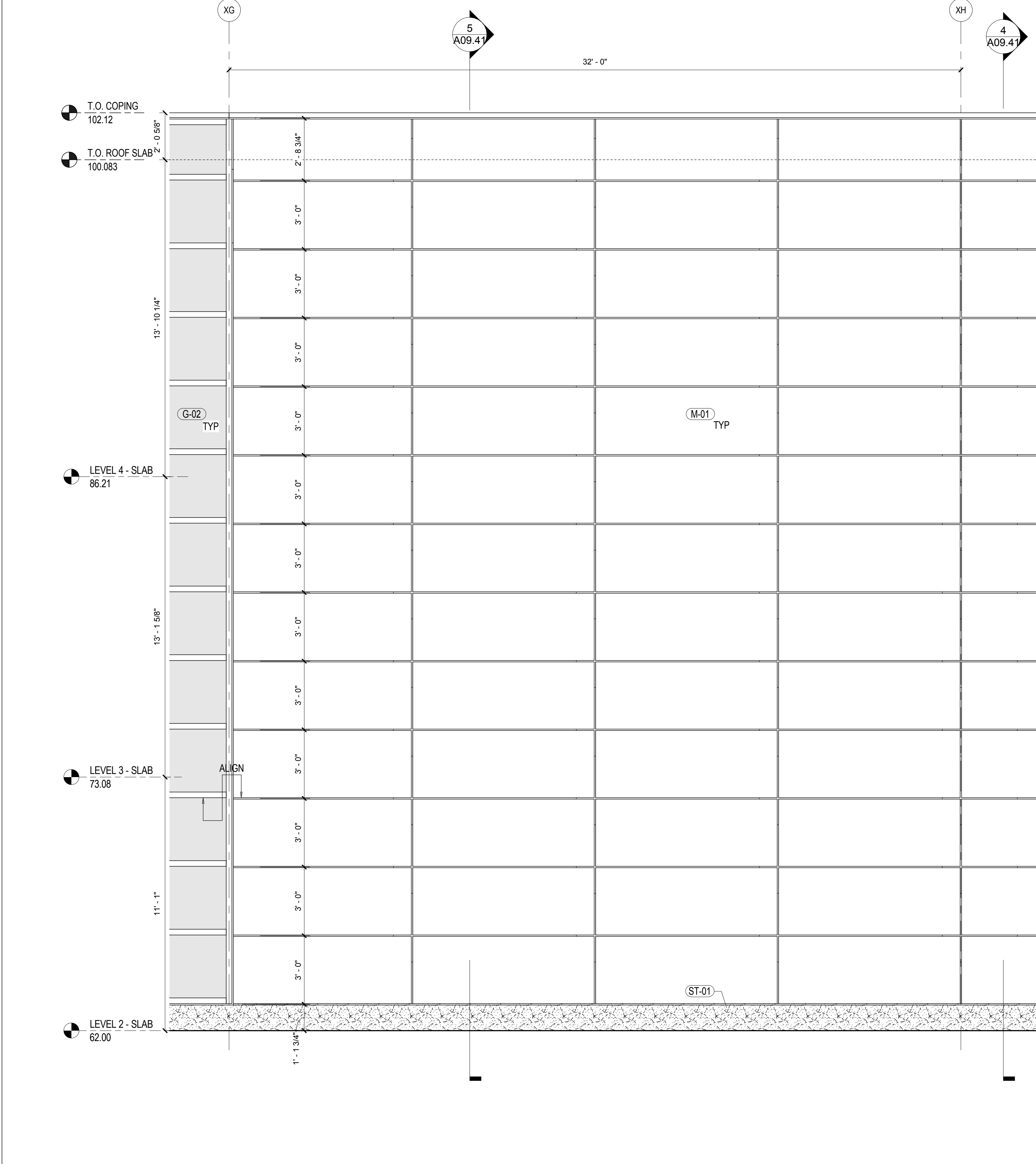
WALL TYPE C.1 SECTION A

SCALE: 3/8" = 1'-0" A09.41



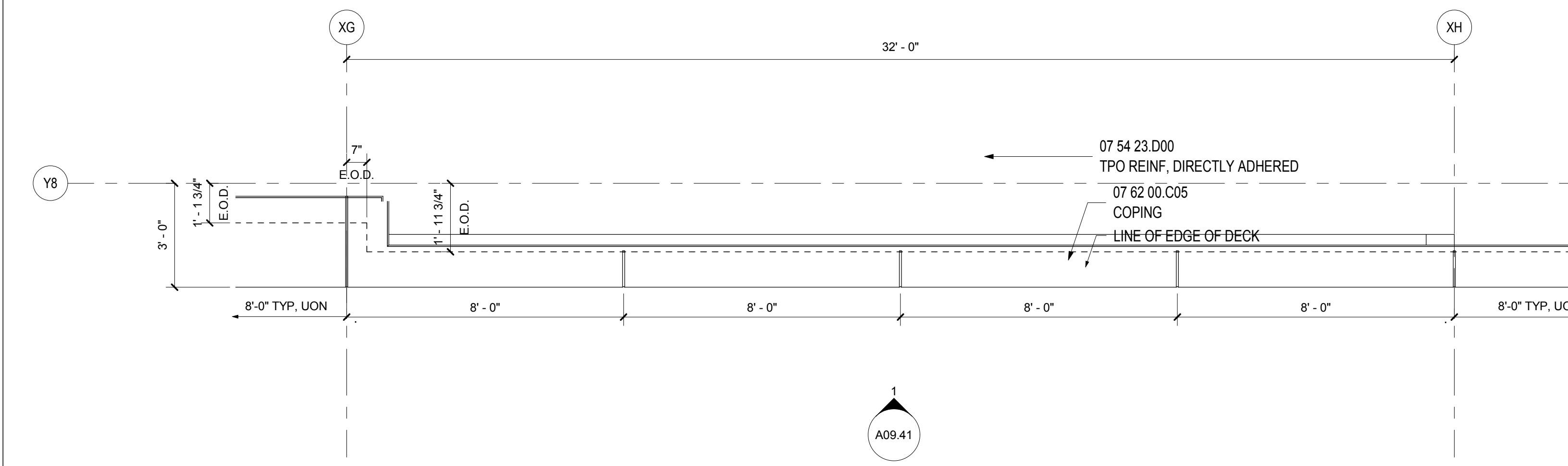
WALL TYPE C.1 SECTION B

SCALE: 3/8" = 1'-0" A09.41



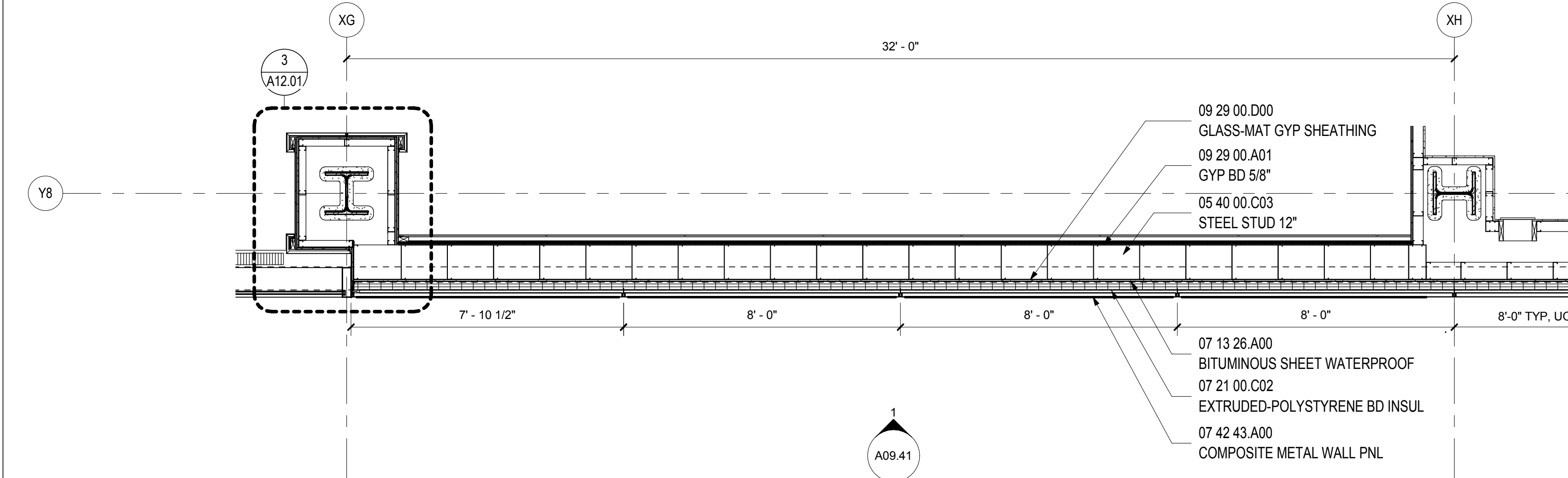
WALL TYPE C.1 - ELEVATION

SCALE: 3/8" = 1'-0" A09.00



WALL TYPE C.1 - ROOF

SCALE: 3/8" = 1'-0" A02.05.05



WALL TYPE C.1 - PLAN LEVEL 2

SCALE: 3/8" = 1'-0" A02.02.05

SHEET NOTES

- 01 EXPANSION JOINT, RE: A02 SERIES FOR TYPE
- 02 SCHEDULED LIGHT FIXTURE.
- 03 EXISTING PRECAST FACADE TO REMAIN.
- 04 EXISTING STOREFRONT TO REMAIN.
- 05 EXPOSED STEEL TO RECEIVE INTUMESCENT FIRE-RESISTANT COATING & FINISHES AS SCHEDULED

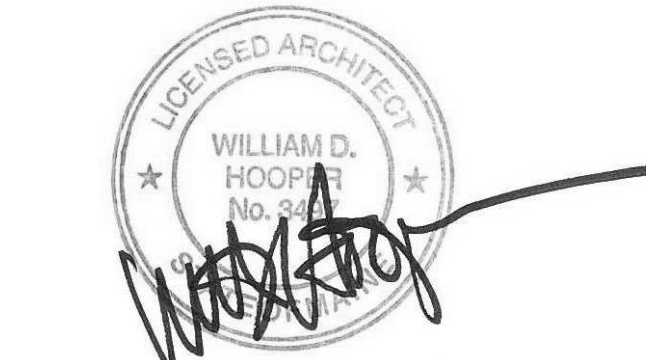
Portland International  
Jetport

1001 Westbrook Street  
Portland, Maine 04102

**Gensler**  
2020 K Street, Northwest  
Suite 200  
Washington DC 20006  
Telephone 202.721.5200  
Facsimile 202.872.8587

Issue	Date & Issue Description	By	Check
01	12/01/08		
02	75% CONSTRUCTION DOCUMENTS		
03	95% CONSTRUCTION DOCUMENTS		
04	ISSUED FOR PERMIT		

Seal/Signature



Project Name  
PWM Terminal Enhancement

Project Number  
09.6395.000

Description  
WALL TYPE C.1

Scale  
3/8" = 1'-0"

**A09.41**

© 2009 Gensler