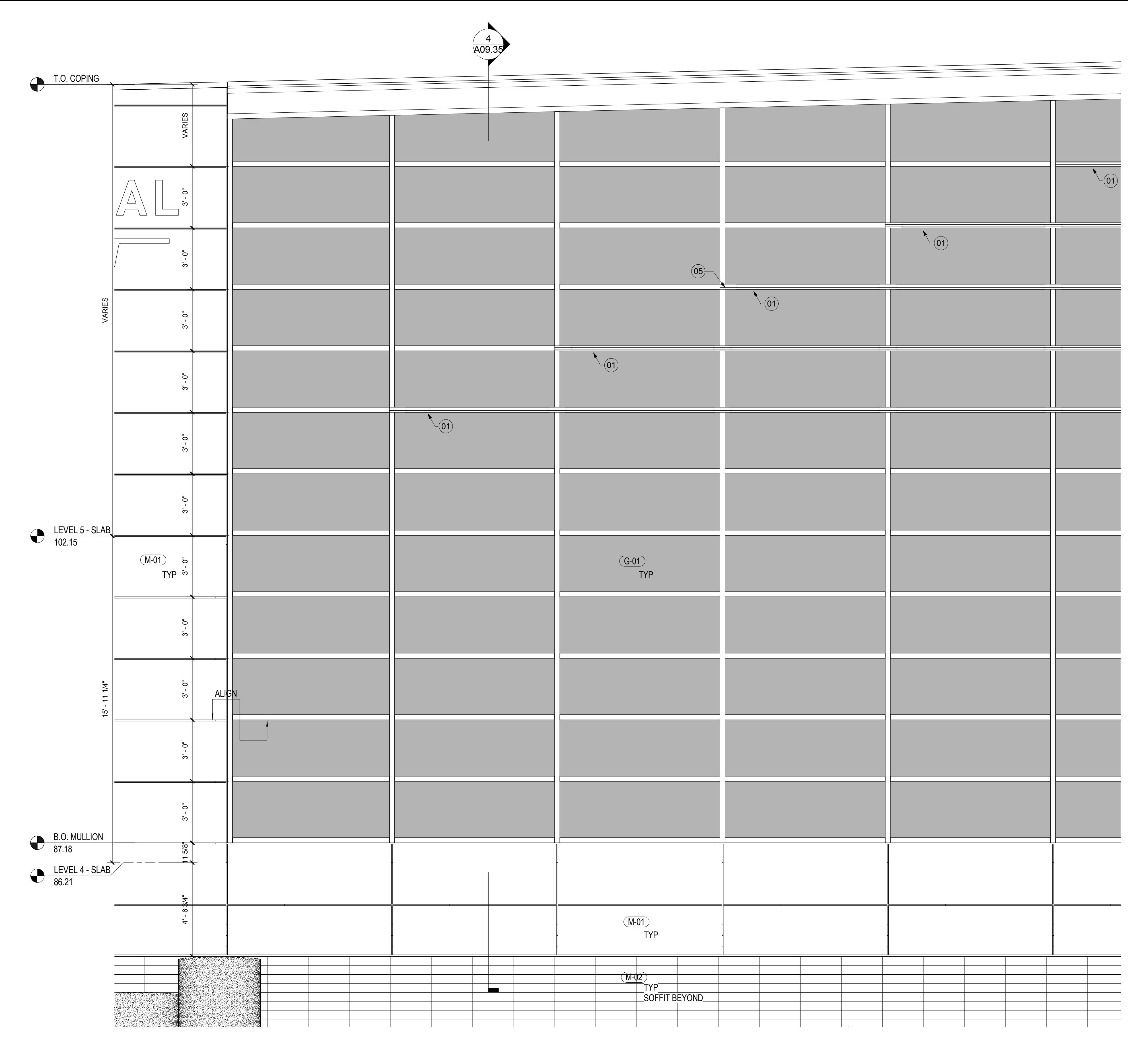
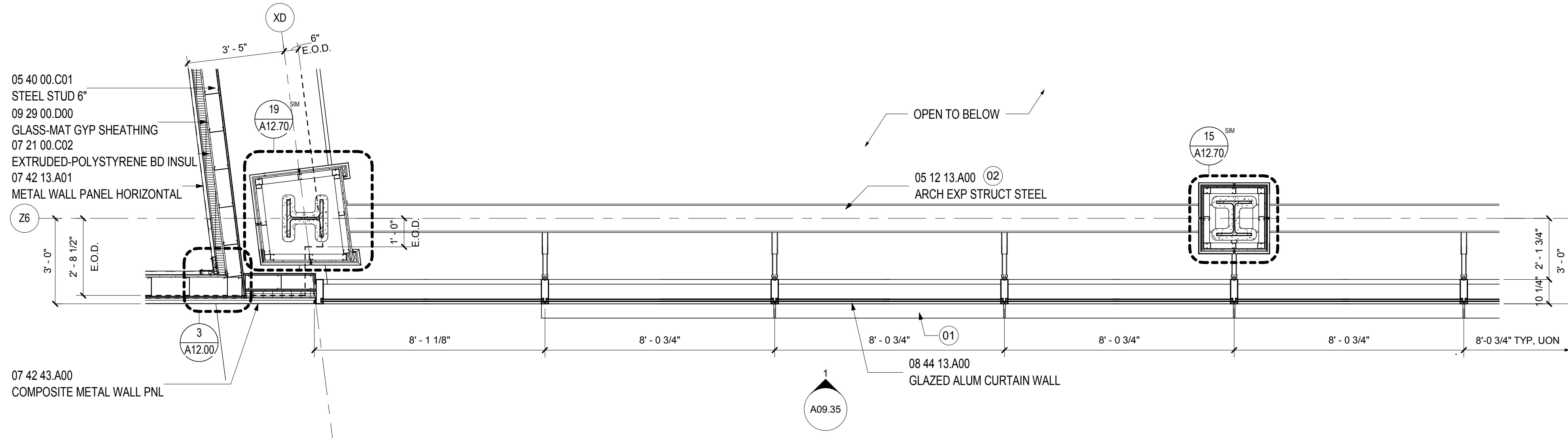


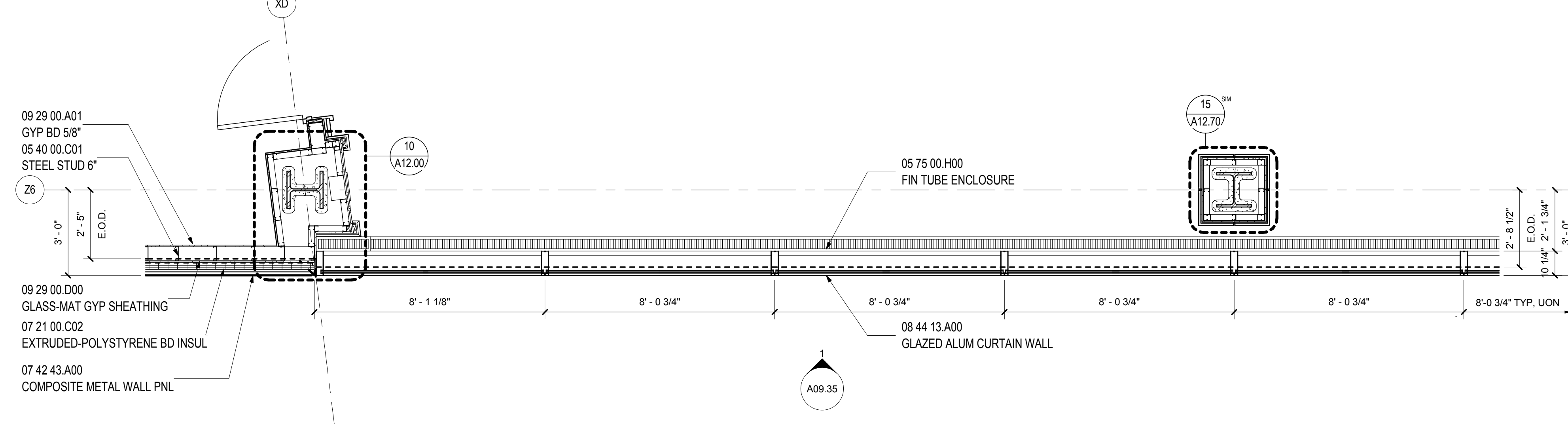
WALL TYPE B.6 - SECTION
SCALE: 3/8" = 1'-0" A09.35



WALL TYPE B.6 - ELEVATION
SCALE: 3/8" = 1'-0" A09.00



WALL TYPE B.6 - PLAN LEVEL 5
SCALE: 3/8" = 1'-0" A02.05.04



WALL TYPE B.6 - PLAN LEVEL 4
SCALE: 3/8" = 1'-0" A02.04.04

- SHEET NOTES**
- 01 EXTRUDED ALUMINUM EXTENSION CAPPED MULLION
 - 02 EXPOSED STEEL TO RECEIVE INTUMESCENT FIRE-RESISTANT COATING & FINISHES AS SCHEDULED
 - 03 LINE OF GYPSUM BOARD LEDGE BELOW
 - 04 SCHEDULED LIGHT FIXTURE
 - 05 PROVIDE END CAP AT MULLION EXTENSION
 - 06 CAP END OF FIN TUBE ENCLOSURE

GENERAL NOTES

A RE: FINISH SCHEDULE & PROJECT MANUAL FOR MULLION FINISH ASSOCIATED W/ GLAZING UNIT.

Portland International Jetport
1001 Westbrook Street
Portland, Maine 04102

Gensler
2020 K Street, Northwest
Suite 200
Washington DC 20006
Telephone 202.721.5200
Facsimile 202.872.8587

Issue	Date & Issue Description	By	Check
01	12/01/08		
02	75% CONSTRUCTION DOCUMENTS		
03	95% CONSTRUCTION DOCUMENTS		
04	10/26/09		
	ISSUED FOR PERMIT		

Seal/Signature

Project Name
PJM Terminal Enhancement

Project Number
09 6395.000

Description
WALL TYPE B.6

Scale
As indicated

A09.35