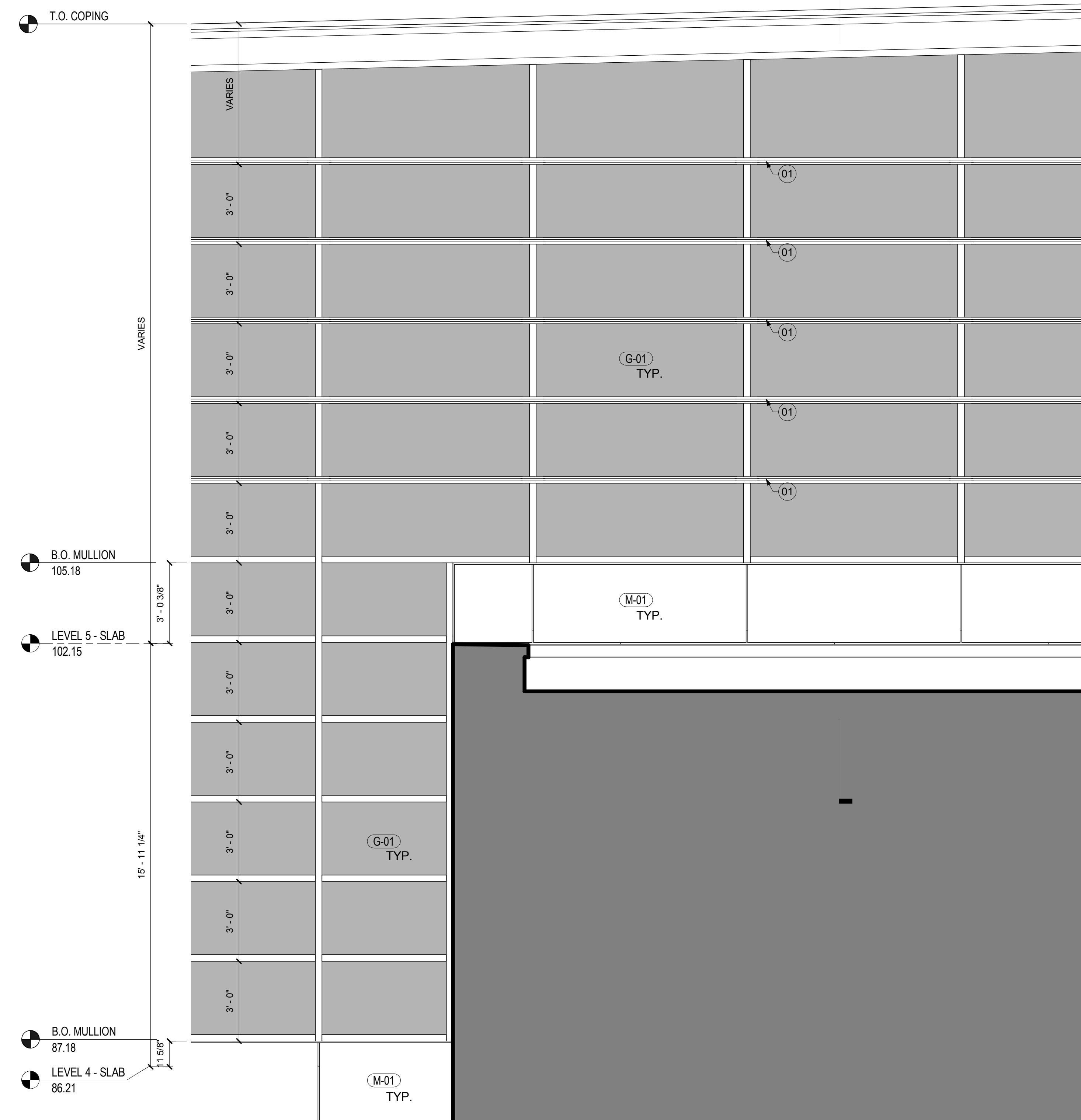


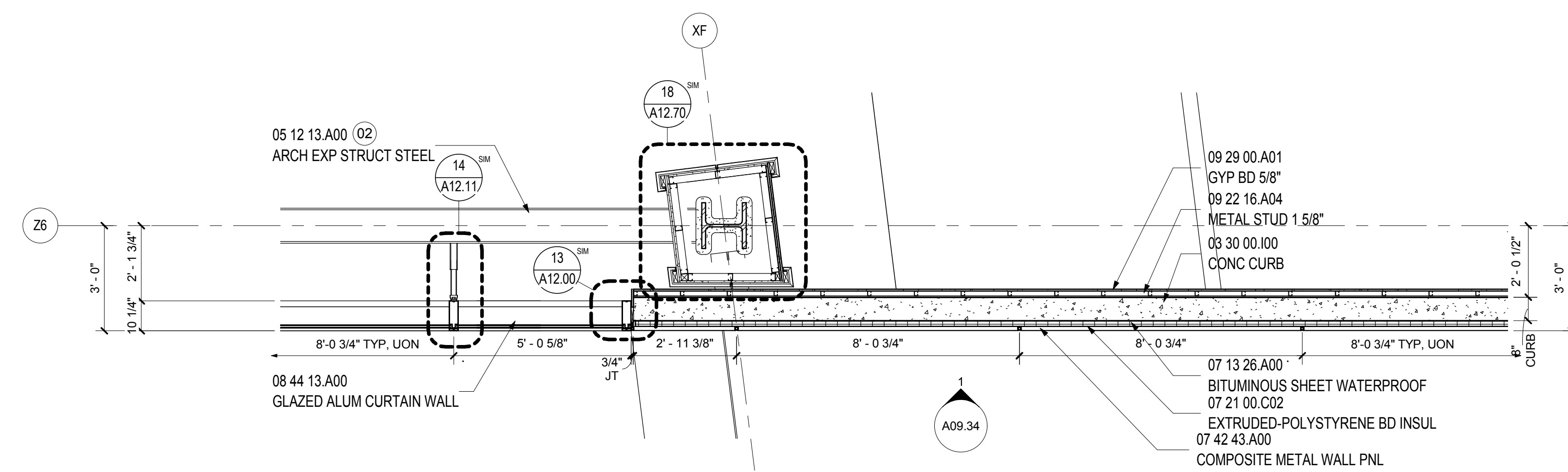
WALL TYPE B.5 - SECTION
SCALE: 3/8" = 1'-0"

A09.34



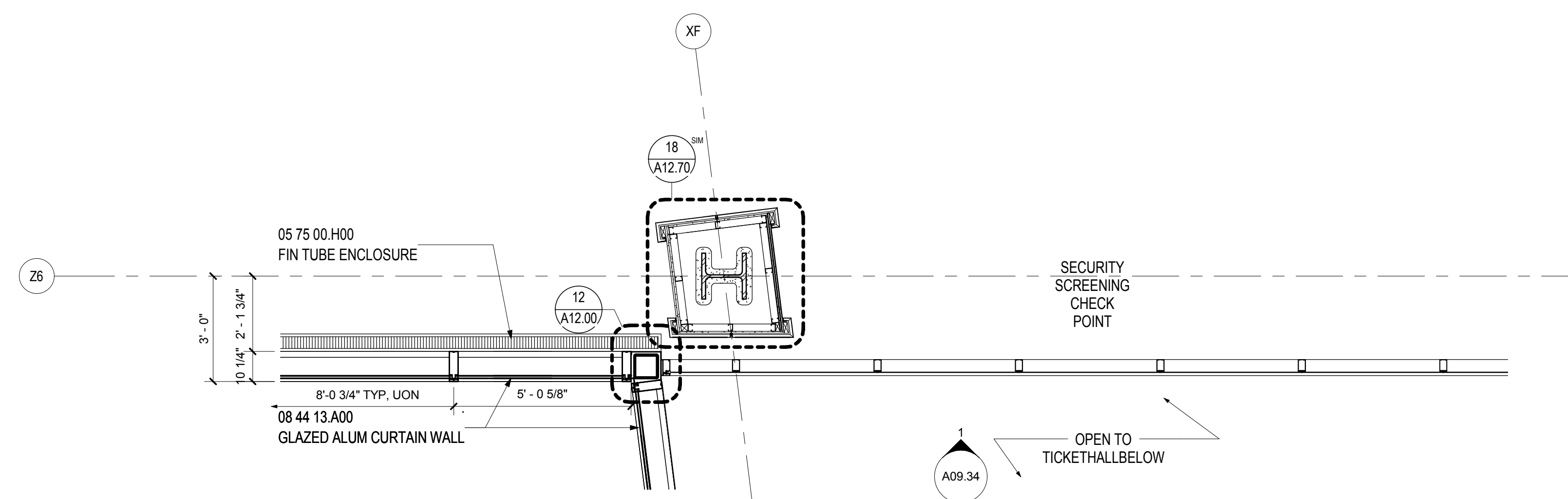
WALL TYPE B.5 - ELEVATION
SCALE: 3/8" = 1'-0"

A09.00



WALL TYPE B.5 - PLAN LEVEL 5
SCALE: 3/8" = 1'-0"

A02.05.05



WALL TYPE B.5 - PLAN LEVEL 4
SCALE: 3/8" = 1'-0"

A02.04.04

SHEET NOTES

- 01 EXTRUDED ALUMINUM EXTENSION CAPPED MULLION
- 02 EXPOSED STEEL TO RECEIVE INTUMESCENT FIRE-RESISTANT COATING & FINISHES AS SCHEDULED
- 03 LINE OF GYPSUM BOARD LEDGE BELOW
- 04 SCHEDULED LIGHT FIXTURE
- 05 PROVIDE END CAP AT MULLION EXTENSION
- 06 CAP END OF FIN TUBE ENCLOSURE

Portland International Jetport

1001 Westbrook Street
Portland, Maine 04102

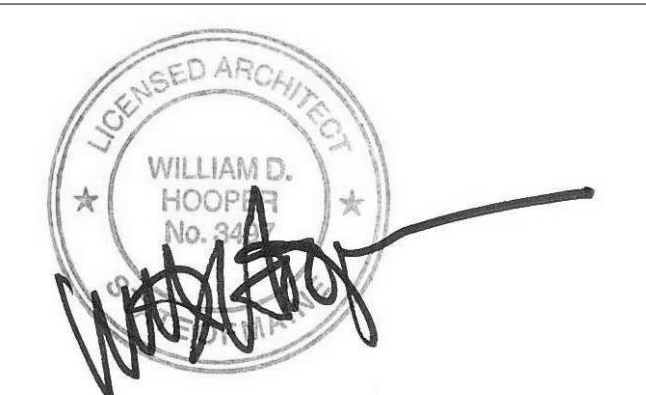
Gensler
2020 K Street, Northwest
Suite 200
Washington DC 20006
Telephone 202.721.5200
Facsimile 202.872.8587

Issue	Date & Issue Description	By	Check
01	12/01/08		
02	75% CONSTRUCTION DOCUMENTS		
02	01/23/09		
03	95% CONSTRUCTION DOCUMENTS		
03	10/26/09		
	ISSUED FOR PERMIT		

GENERAL NOTES

- A RE: FINISH SCHEDULE & PROJECT MANUAL FOR MULLION FINISH ASSOCIATED W/ GLAZING UNIT.

Seal/Signature



Project Name
PWM Terminal Enhancement

Project Number
09 6395.000

Description
WALL TYPE B.5

Scale
As indicated

A09.34

© 2009 Gensler