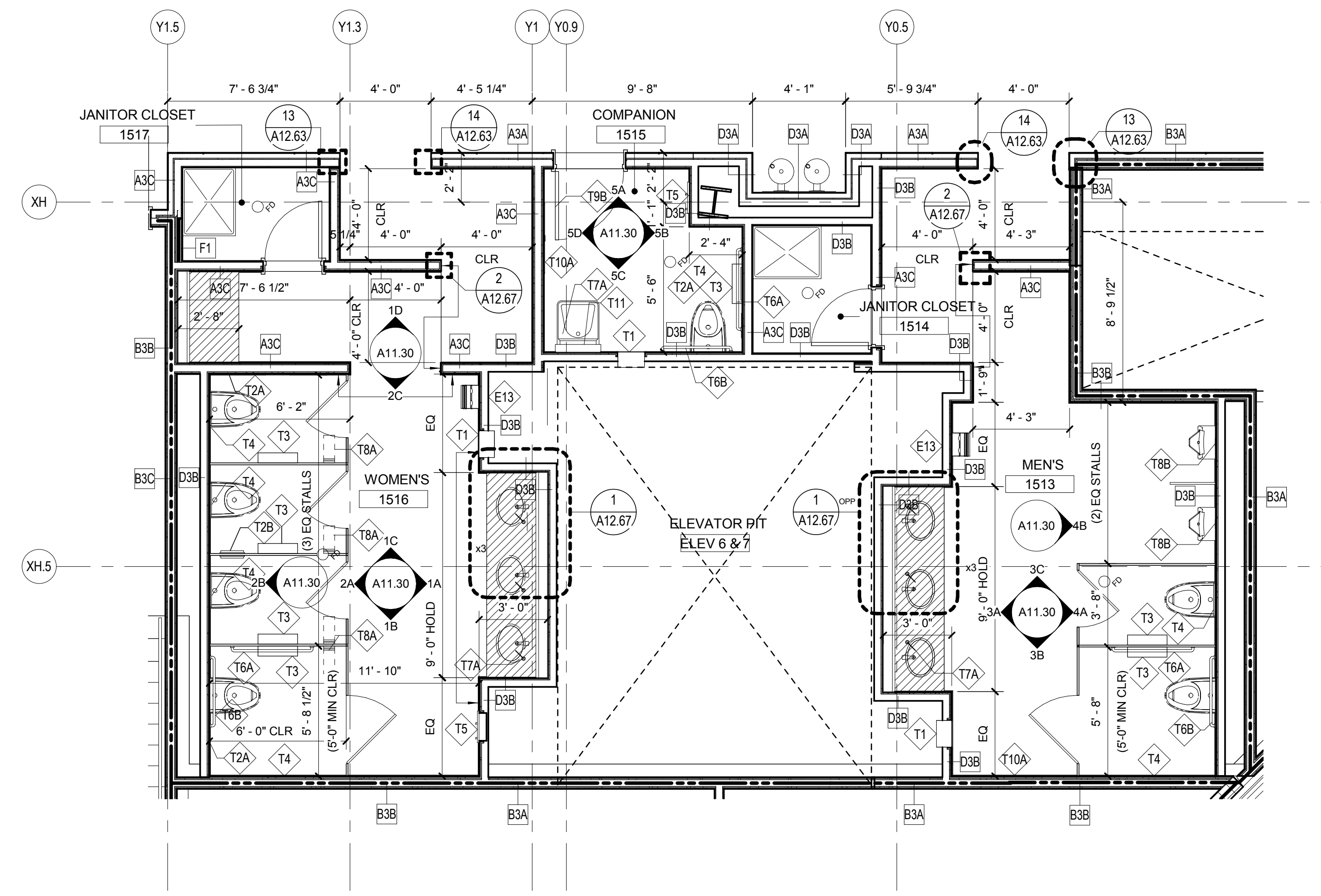


ENLARGED PLAN-LEVEL 2 RESTROOMS - REFLECTED CEILING PLAN

SCALE: 1/4" = 1'-0"

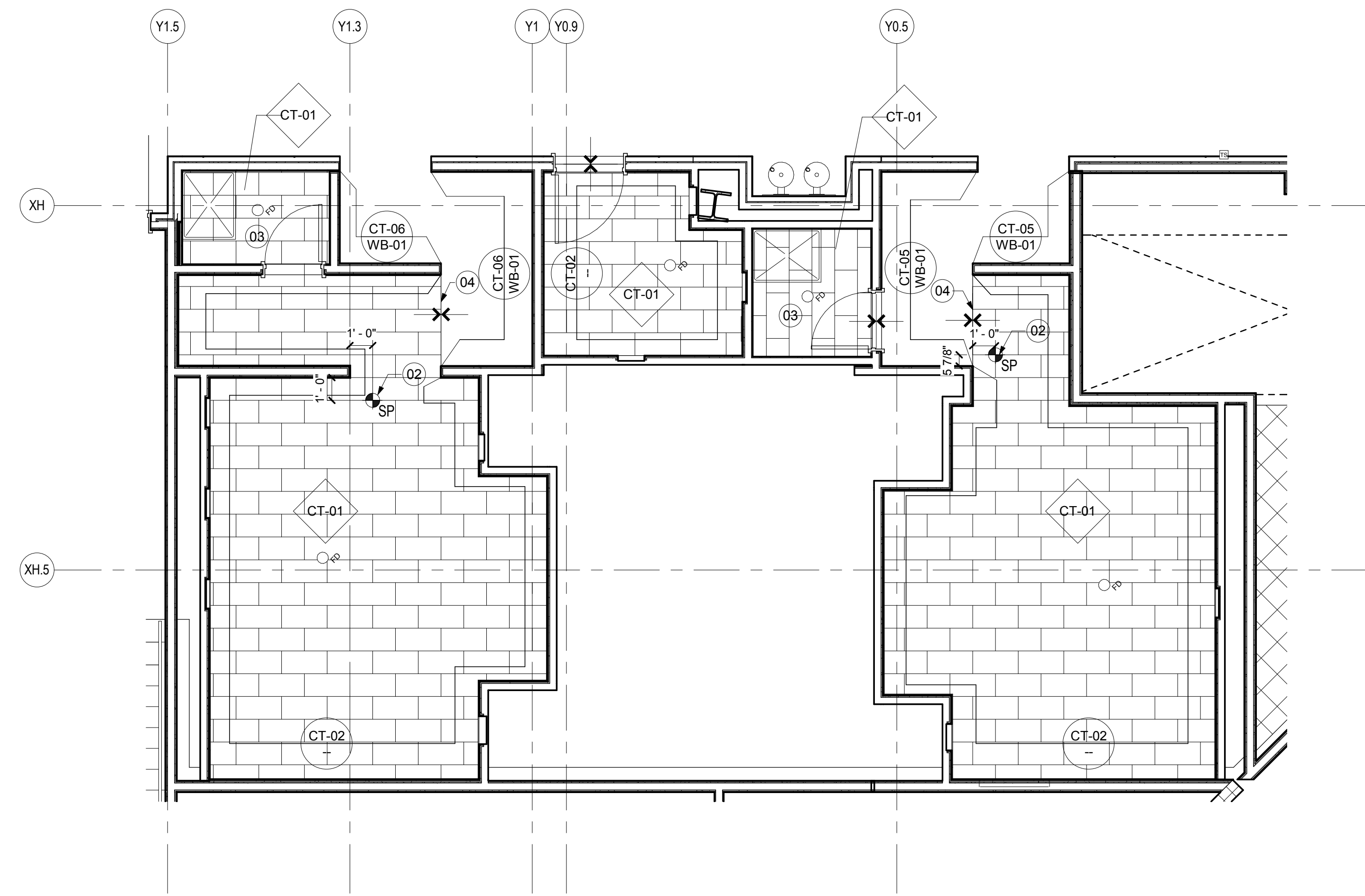
A04.02.03



ENLARGED PLAN-LEVEL 2 RESTROOMS - CONSTRUCTION PLAN

SCALE: 1/4" = 1'-0"

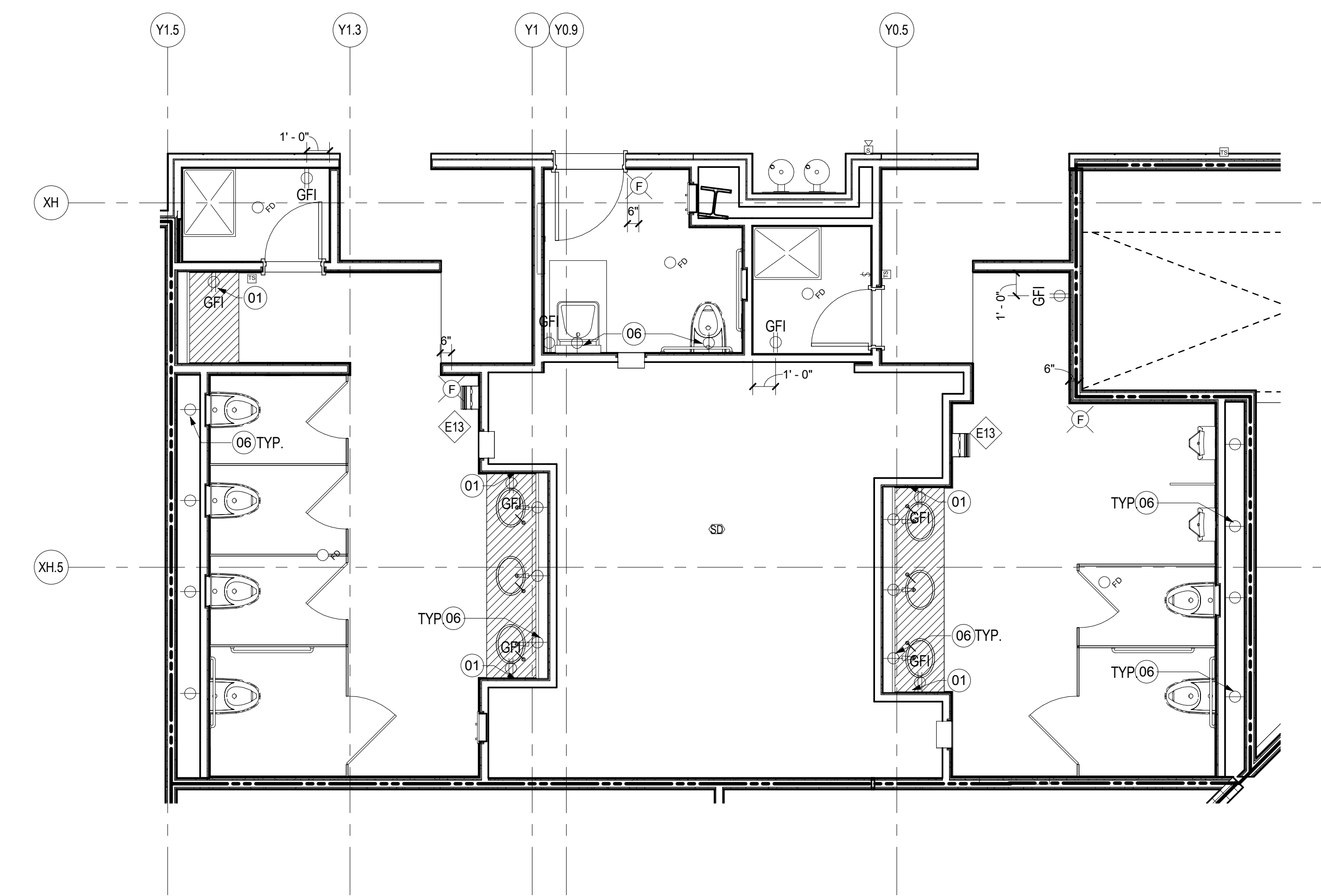
A02.02.03



ENLARGED PLAN-LEVEL 2 RESTROOMS - FINISH PLAN

SCALE: 1/4" = 1'-0"

A05.02.03



ENLARGED PLAN-LEVEL 2 RESTROOMS - POWER & COMM. PLAN

SCALE: 1/4" = 1'-0"

A03.02.04

**SHEET NOTES**

- 01 GFI RECEPTACLE MOUNTED VERTICALLY AT 42" AFF MAX. ALIGN T.O. RECEPTACLE WITH GROUT LINE. RE: DETAIL FOR EXACT LOCATION HORIZONTALLY.
- 02 START POINT OF FLOOR TILE
- 03 WALLS TO BE CT-02 (4) FULL TILES FROM FINISHED FLOOR. PAINT GYP WALLS ABOVE P-01
- 04 TRANSITION FROM POLISHED CONCRETE FLOORING TO TILE. RE: DETAIL 5/A12.76
- 05 LIGHT FIXTURE FR AT TOP AND BOTTOM OF MIRROR. FOR MORE INFORMATION REFER TO DETAIL 5/89/A12.67
- 06 SIMPLEX OUTLET. RE: TO ELECTRICAL DRAWINGS FOR ADDITIONAL INFORMATION

**GENERAL NOTES**

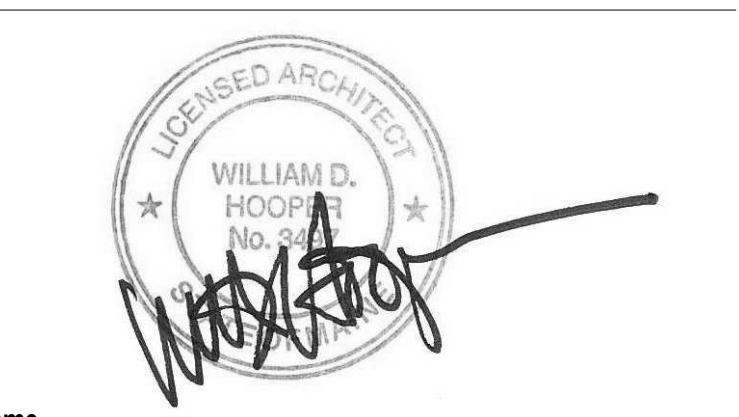
- A ALL DIMENSIONS ARE TO FINISHED FACE OF MATERIAL. COORDINATE WITH FINISH THICKNESS.
- B RE: A01.13 FOR ACCESSORY MOUNTING HEIGHTS U.O.N. ON ELEVATIONS.
- C RE: PROJECT MANUAL FOR ACCESSORY INSTALLATION AND FURTHER INFORMATION.
- D RE: PLUMBING SPECIFICATIONS FOR INSTALLATION OF ALL PLUMBING EQUIPMENT.
- E RE: PROJECT MANUAL FOR LIGHTING SPECIFICATIONS.
- F ACT CEILINGS TO BE CENTERED IN EACH ROOM U.O.N.
- G RE: ELEVATIONS FOR LOCATION OF TOILET ACCESSORIES

Portland International Jetport  
1001 Westbrook Street  
Portland, Maine 04102

**Gensler**  
2020 K Street, Northwest  
Suite 200  
Washington DC 20006  
Telephone 202.721.5200  
Facsimile 202.872.8587

Issue	Date & Issue Description	By	Check
01	08/22/08		
02	DESIGN DEVELOPMENT		
03	75% CONSTRUCTION DOCUMENTS		
04	95% CONSTRUCTION DOCUMENTS		
05	10/28/09		
06	ISSUED FOR PERMIT		

Seal/Signature



Project Name  
PWM Terminal Enhancement

Project Number  
09.6395.000

Description  
ENLARGED PLANS - LEVEL 2 RESTROOMS

Scale  
As indicated

**A08.00**

© 2009 Gensler