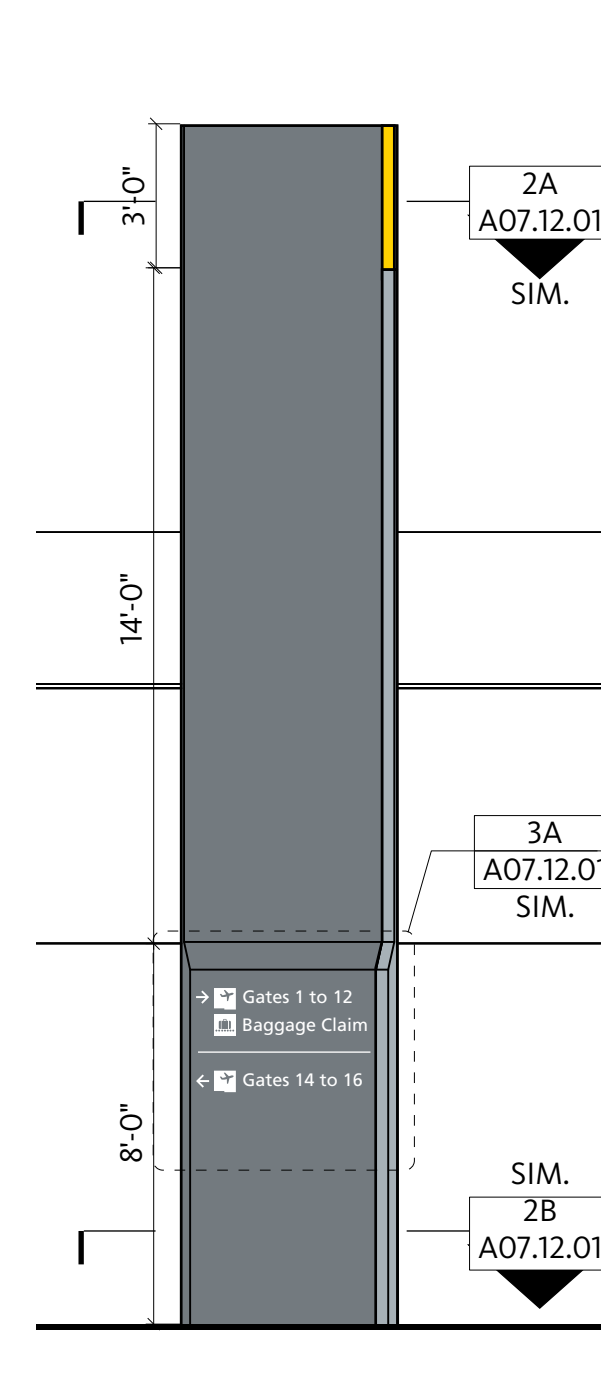
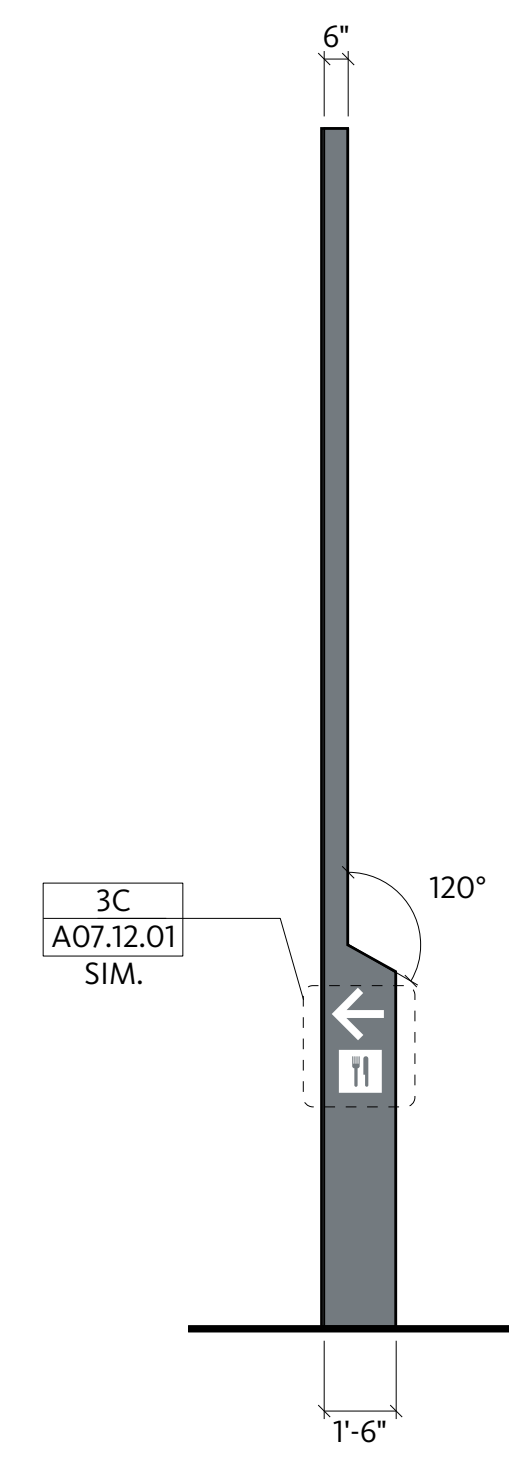


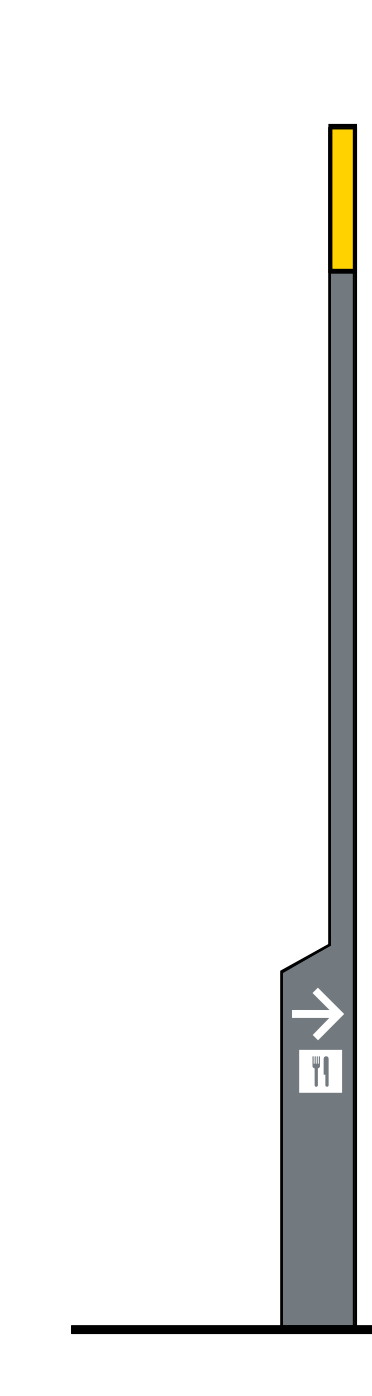
**A D.2A PRIMARY DIRECTIONAL @ 3.01: ELEVATION A**  
SCALE: 1/4"=1'-0"



**B D.2A PRIMARY DIRECTIONAL @ 3.01: ELEVATION B**  
SCALE: 1/4"=1'-0"



**C D.2A PRIMARY DIRECTIONAL @ 3.01: ELEVATION C**  
SCALE: 1/4"=1'-0"



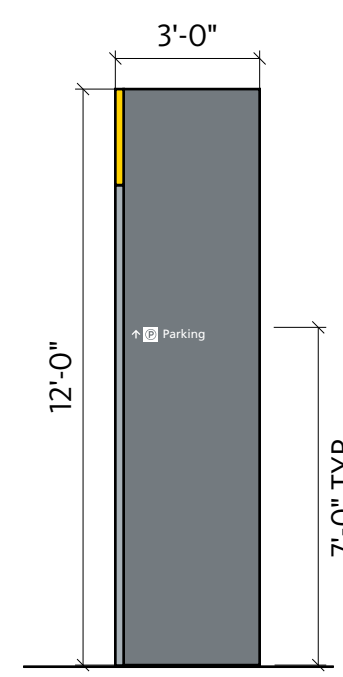
**D D.2A PRIMARY DIRECTIONAL @ 3.01: ELEVATION D**  
SCALE: 1/4"=1'-0"

**SHEET NOTES**

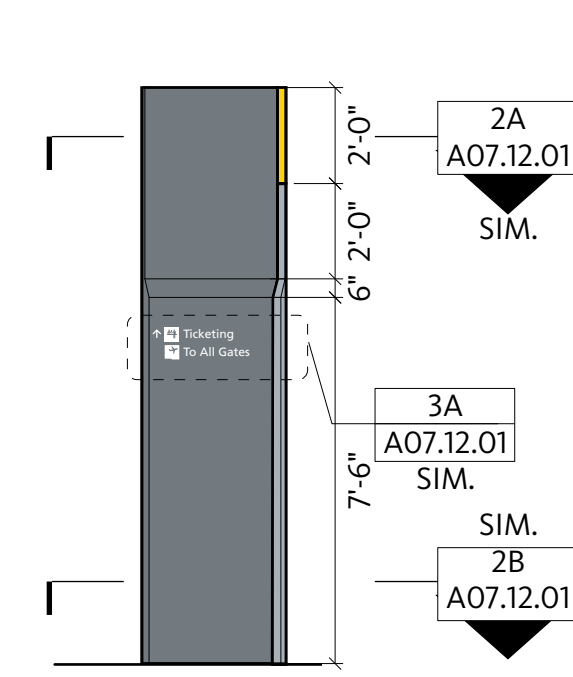
- Counter Sunk Screw: Where visible, paint to match adjacent surfaces
- Sign Body: MF1
- Internal Armature: As necessary to prevent oil-canning, type determined by fabricator
- Fluorescent Tube or LED
- Ballasts (or equivalent) for Fluorescent Tube or LED
- Sign Frame: MF1, aluminum armature
- Mechanical Fastener: As necessary, steel type determined by fabricator
- Wallpanel by G.C.: Provide blocking as necessary
- Sign Panel: 4 mil. Dibond composite material, matte white paintable surfaces, from www.alcancompositeusa.com
- Braille Beads: ADA compliant, match background color
- Metal Stud: Mounted to back of Sign Body for installation
- Fixed Sign Body
- Moveable Sign Window
- Fixed Sign Backer: Brake-formed aluminum
- Sign Support: MF2, steel square pipe
- Weld: 5/16" on all connecting edges, paint to match adjacent surfaces
- VHB Foam Tape
- Acetate Insert: Sign fabricator to supply first round of inserts and word processing templates for creating new inserts
- Raised Lettering and/or Symbol: ADA compliant, match P1
- Concealed Blocking: by G.C.
- Sign Frame: MF1, P4, Mechanically fastened to the wall with concealed, anti-corrosive fasteners
- Internally illuminated Sign Face: AC1 with V2 on 2nd surface. Removable for light fixture maintenance.
- Neon or LED: White
- Weep Holes
- Transformer: in weatherproof case, connect to remote switch (and photocell/digital timer if requested). Switch location TBD with owner.
- Halo lit ribbon letter: MF1, P3, Grind smooth all exposed welds. No visible fasteners/seams on front surface. Mechanically fastened to the wall with concealed, anti-corrosive fasteners.
- Mounting Rod: MF1, P 1, double bolted on each end. As minimum appearance as possible. Fabricator to coordinate with GC to install support prior to wall being finished.
- Rubber Gasket
- Text: Direct print to second surface of glass
- Solid Surfacing by G.C.

**Portland International Jetport**  
1001 Westbrook Street  
Portland, Maine 04102

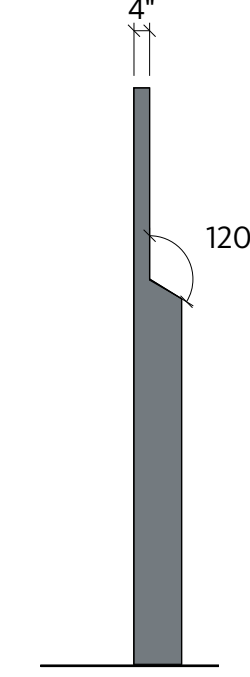
**Gensler**  
2020 K Street, Northwest  
Suite 200  
Washington DC 20006  
Telephone 202.721.5200  
Facsimile 202.872.8587



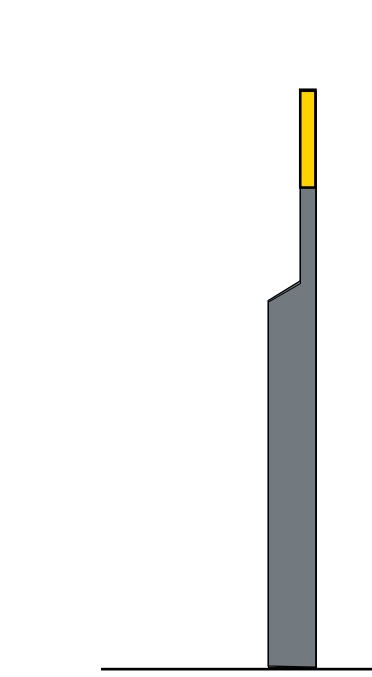
**A D.2B SECONDARY DIRECTIONAL @ 4.01: ELEVATION A**  
SCALE: 1/4"=1'-0"



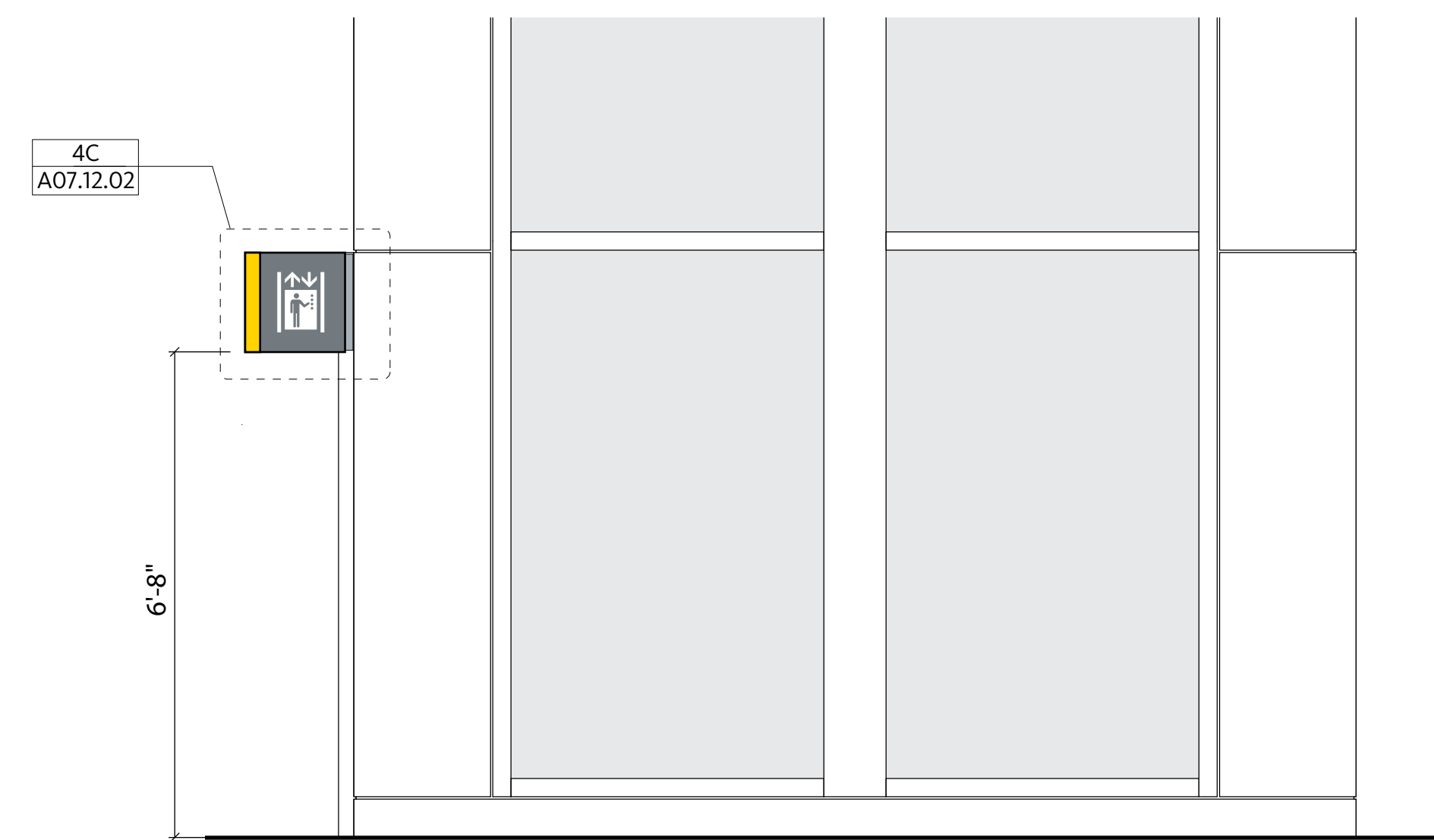
**B D.2B SECONDARY DIRECTIONAL @ 4.01: ELEVATION B**  
SCALE: 1/4"=1'-0"



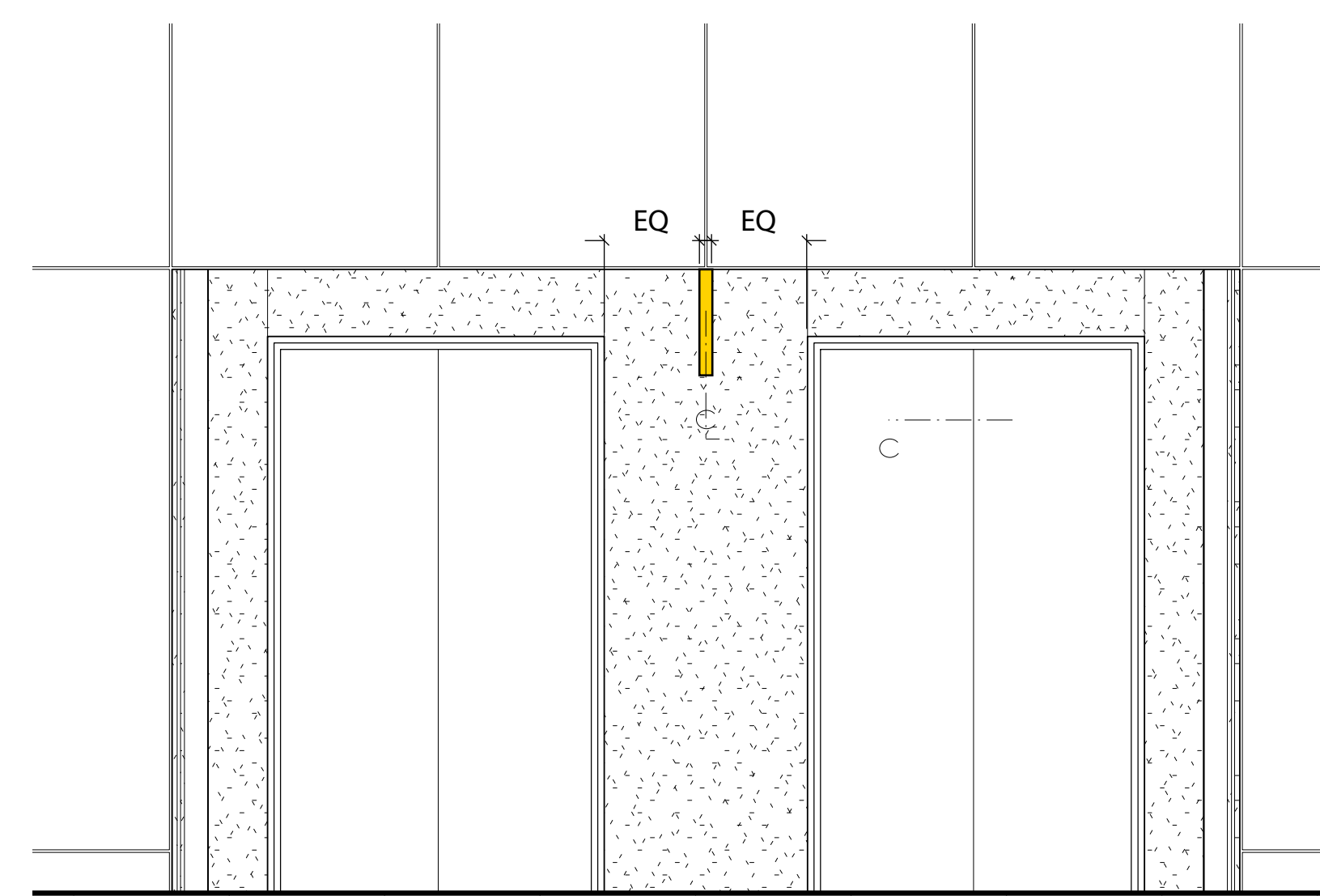
**C D.2B SECONDARY DIRECTIONAL @ 4.01: ELEVATION C**  
SCALE: 1/4"=1'-0"



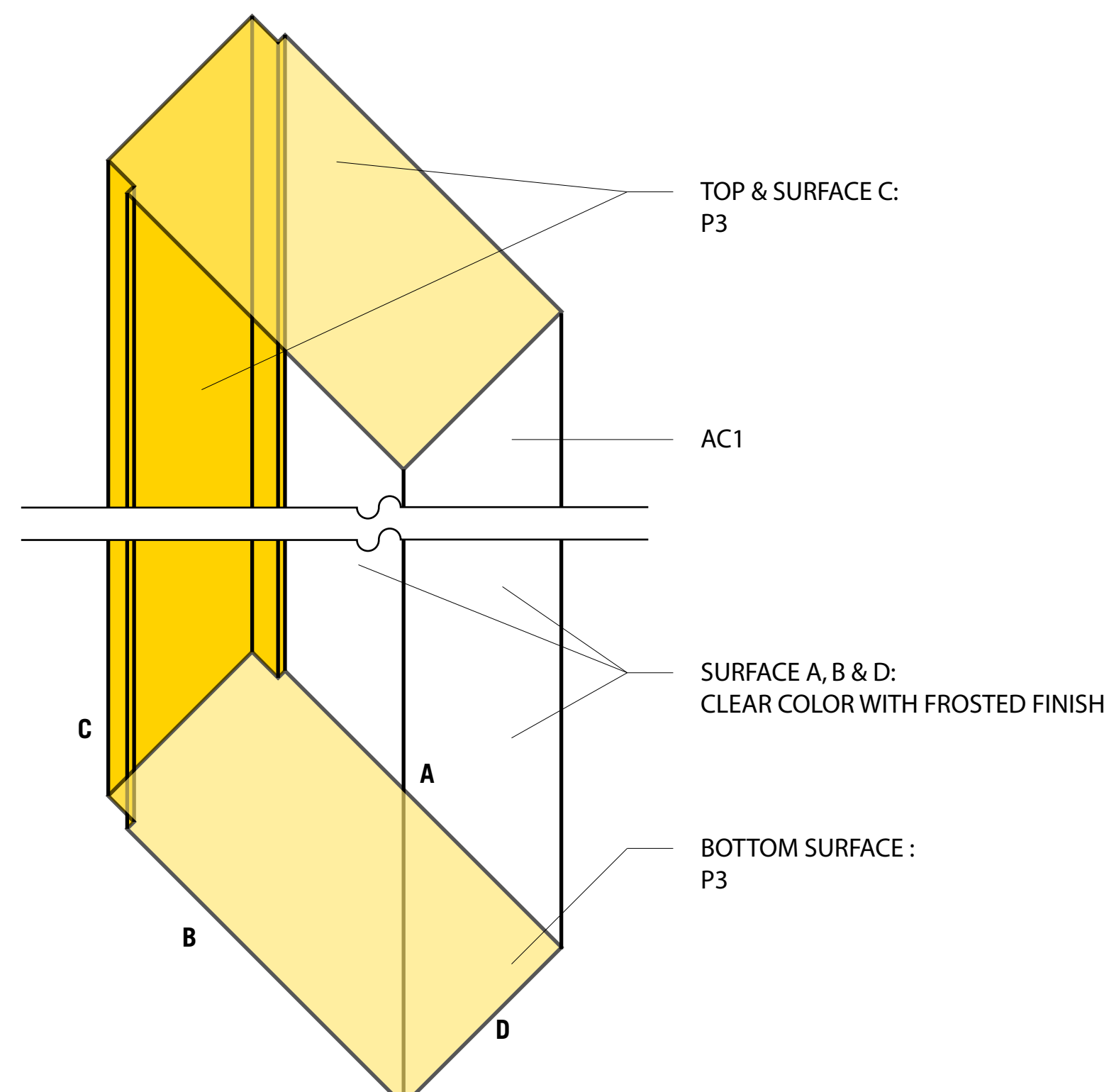
**D D.2B SECONDARY DIRECTIONAL @ 4.01: ELEVATION D**  
SCALE: 1/4"=1'-0"



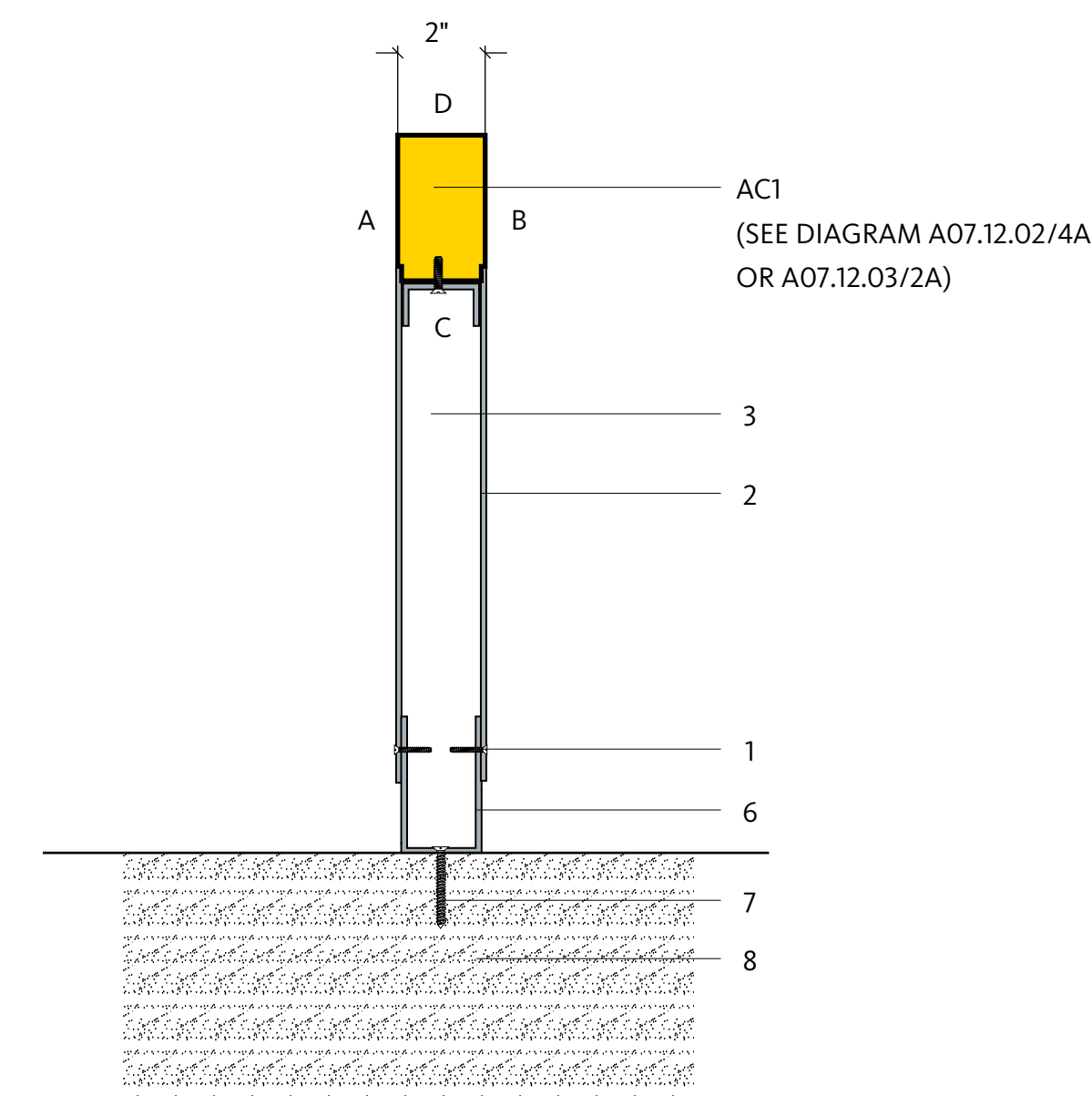
**A D.3 SERVICE BLADE: ELEVATION FRONT VIEW**  
SCALE: 1/2"=1'-0"



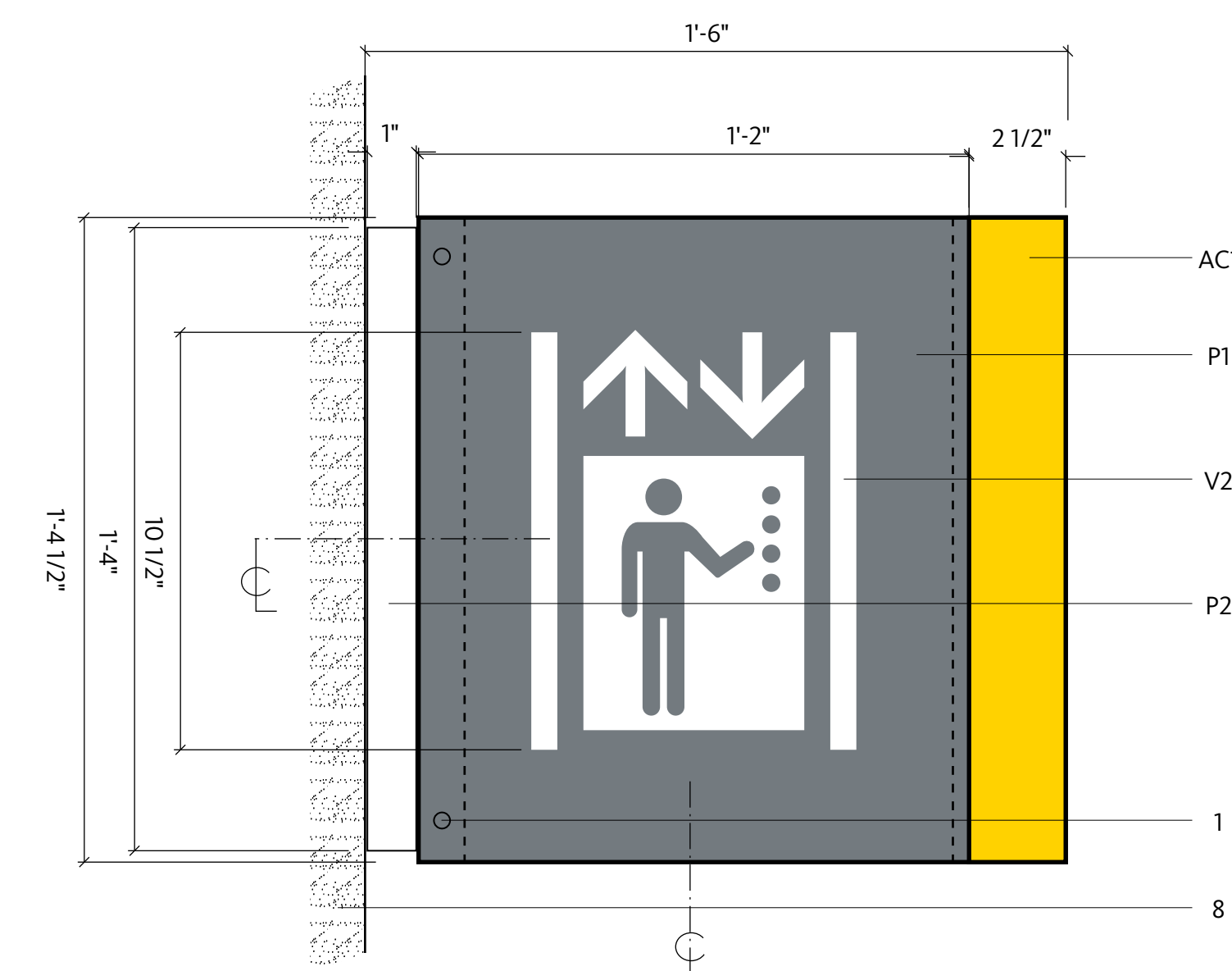
**B D.3 SERVICES BLADE : ELEVATION SIDE VIEW**  
SCALE: 1/2"=1'-0"



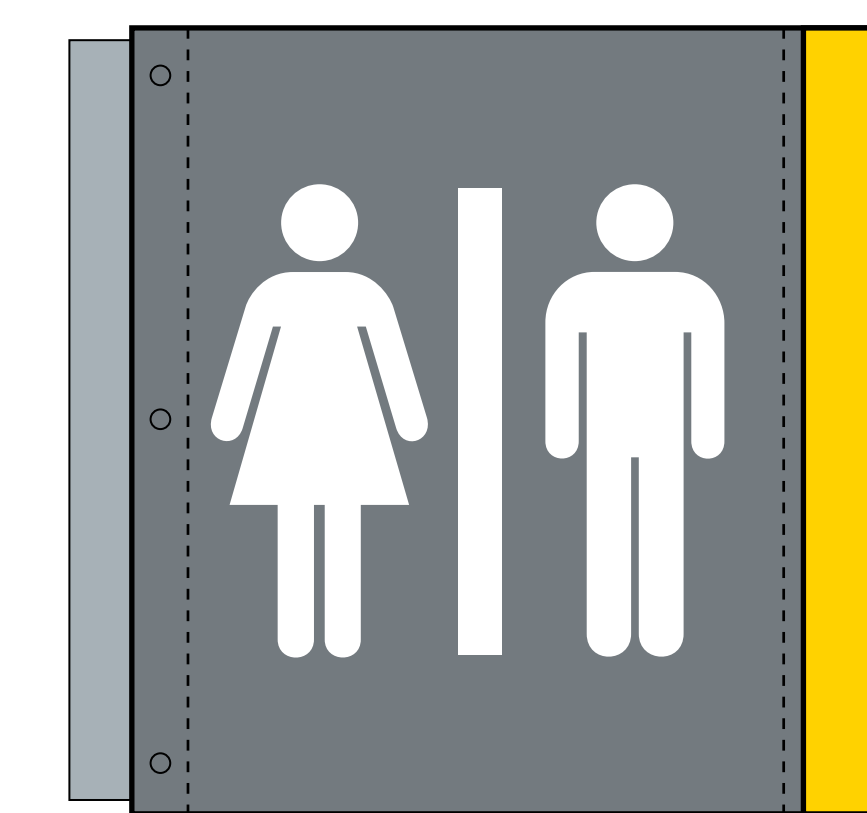
**A D.3 SERVICES BLADE: PARTIAL DIAGRAM**  
SCALE: NOT TO SCALE



**B D.3 SERVICES BLADE: SECTION**  
SCALE: 1:4



**C D.3 SERVICES BLADE : DETAIL (OPPOSITE HAND SIM.)**  
SCALE: 1:4



**D D.3 SERVICE BLADE: ADDITIONAL LAYOUT**  
SCALE: 1:4

**GENERAL NOTES**

Issue	Date & Issue Description	By	Check
01	01/23/09		
	90% CONSTRUCTION DOCUMENTS	BR	CK
02	10/26/09	BR/SH	MJ/TO
	ISSUED FOR PERMIT		

Seal/Signature

Project Name  
PWM Terminal Enhancement

Project Number  
09 6395 000

Description  
SIGNAGE & WAYFINDING: ELEVATIONS, SECTIONS, DETAILS

Scale  
As Indicated

**A07.12.02**

© 2009 Gensler