

A D.2A PRIMARY DIRECTIONAL @ 2.01: ELEVATION A
SCALE: 1/4"=1'-0"

B D.2A PRIMARY DIRECTIONAL @ 2.01: ELEVATION B
SCALE: 1/4"=1'-0"

C D.2A PRIMARY DIRECTIONAL @ 2.01: ELEVATION C
SCALE: 1/4"=1'-0"

D D.2A PRIMARY DIRECTIONAL @ 2.01: ELEVATION D
SCALE: 1/4"=1'-0"

SHEET NOTES

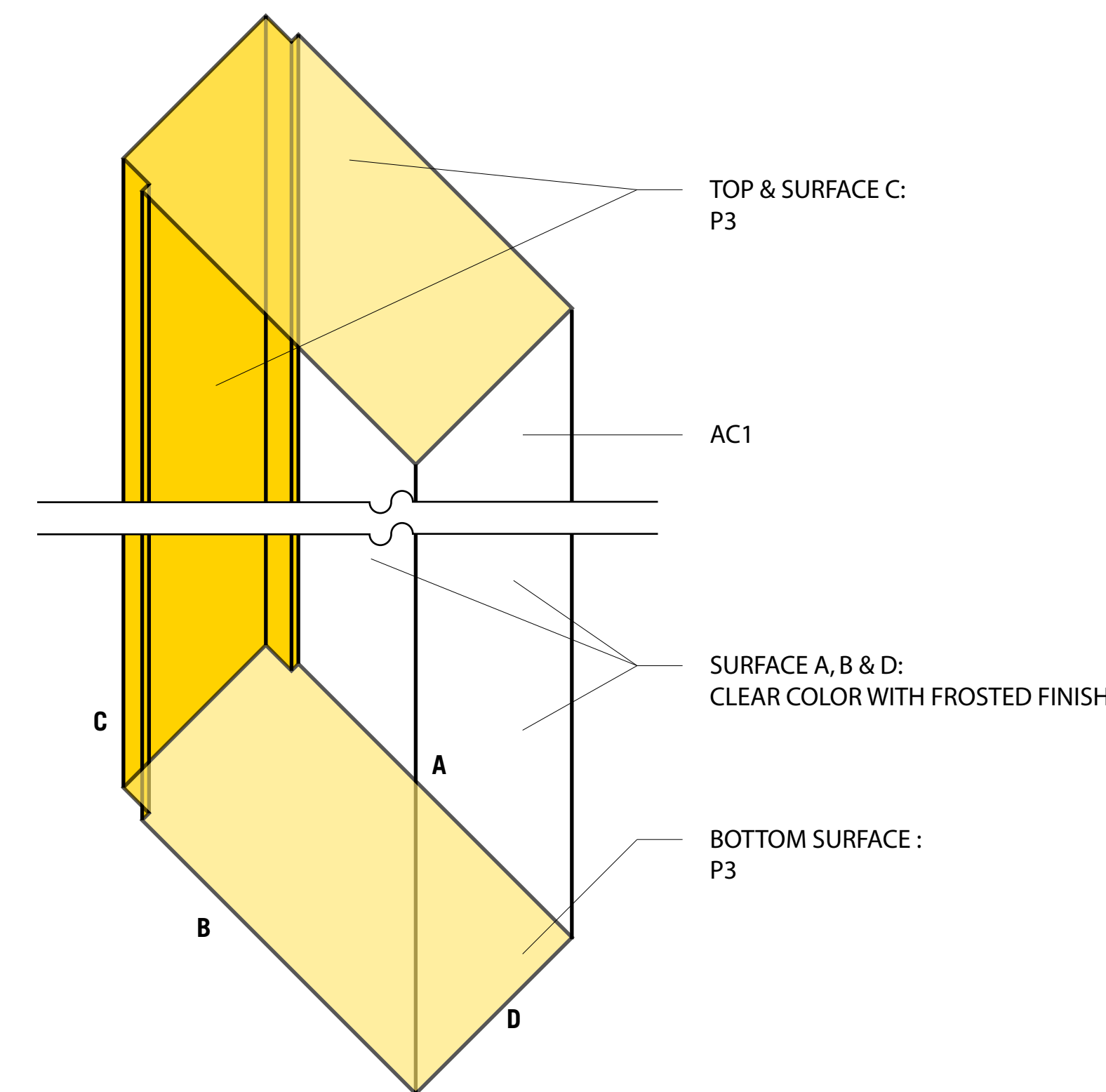
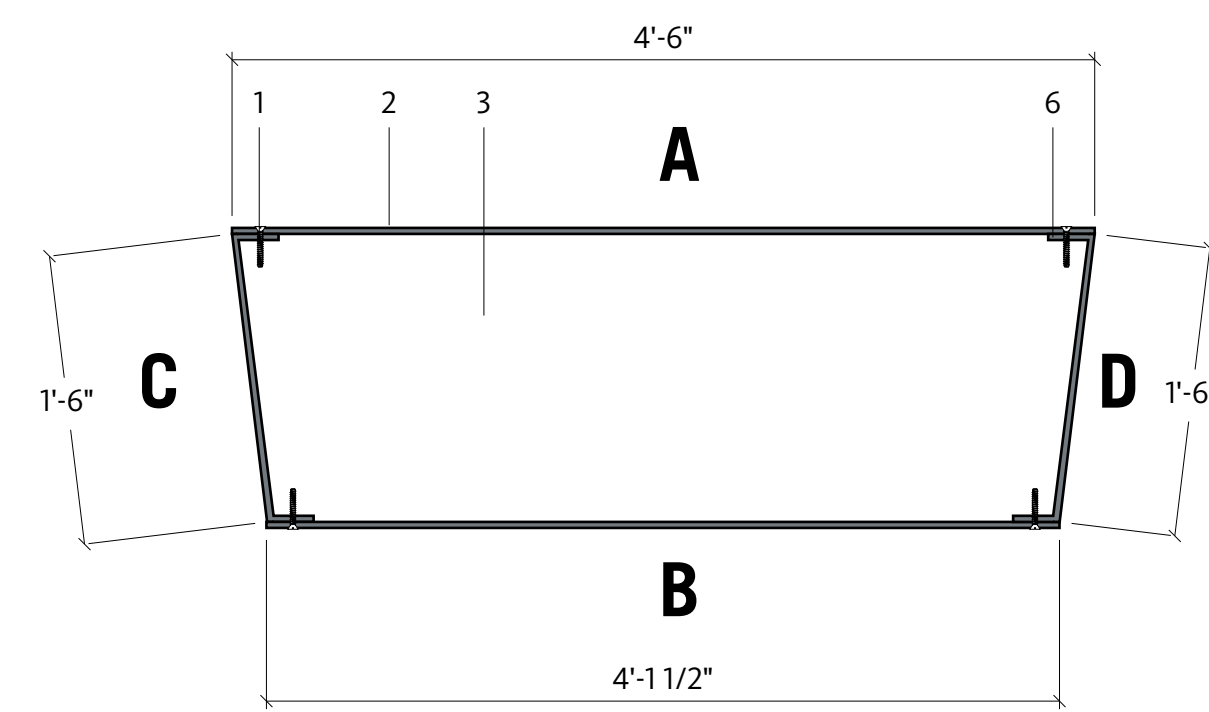
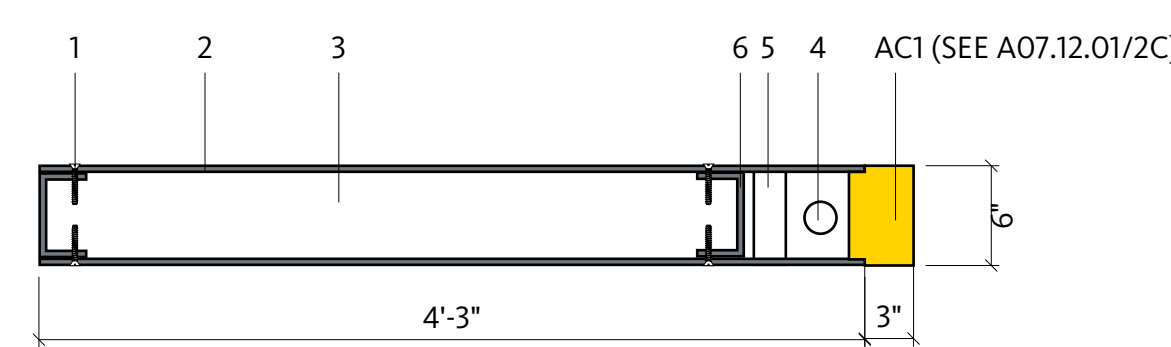
- Counter Sunk Screw: Where visible, paint to match adjacent surfaces
- Sign Body: MF1
- Internal Armature: As necessary to prevent oil-canning, type determined by fabricator
- Fluorescent Tube or LED
- Ballasts (or equivalent) for Fluorescent Tube or LED
- Sign Frame: MF1, aluminum armature
- Mechanical Fastener: As necessary, steel type determined by fabricator
- Wallpanel by G.C.: Provide blocking as necessary
- Sign Panel: 4 mil. Dibond composite material, matte white paintable surfaces, from www.alcancompositeusa.com
- Braille Beads: ADA compliant, match background color
- Metal Stud: Mounted to back of Sign Body for installation
- Fixed Sign Body
- Moveable Sign Window
- Fixed Sign Backer: Brake-formed aluminum
- Sign Support: MF2, steel square pipe
- Weld: 5/16" on all connecting edges, paint to match adjacent surfaces
- VHB Foam Tape
- Acetate Insert: Sign fabricator to supply first round of inserts and word processing templates for creating new inserts
- Raised Lettering and/or Symbol: ADA compliant, match P1
- Concealed Blocking: by G.C.
- Sign Frame: MF1, P4, Mechanically fastened to the wall with concealed, anti-corrosive fasteners
- Internally illuminated Sign Face: AC1 with V2 on 2nd surface. Removable for light fixture maintenance.
- Neon or LED: White
- Weep Holes
- Transformer: in weatherproof case, connect to remote switch (and photocell/digital timer if requested). Switch location TBD with owner.
- Halo lit ribbon letter: MF1, P3, Grind smooth all exposed welds. No visible fasteners/seams on front surface. Mechanically fastened to the wall with concealed, anti-corrosive fasteners.
- Mounting Rod: MF1, P 1, double bolted on each end. As minimum appearance as possible. Fabricator to coordinate with GC to install support prior to wall being finished.
- Rubber Gasket
- Text: Direct print to second surface of glass
- Solid Surfacing by G.C.

A D.2A PRIMARY DIRECTIONAL: SECTION
SCALE: 1"=1'-0"

B D.2A PRIMARY DIRECTIONAL: SECTION
SCALE: 1"=1'-0"

C D.2A PRIMARY DIRECTIONAL & D.2B SECONDARY DIRECTIONAL : PARTIAL DIAGRAM
SCALE: NOT TO SCALE

D D.2A PRIMARY DIRECTIONAL @ 2.01: ELEVATION D
SCALE: 1/4"=1'-0"



A D.2A PRIMARY DIRECTIONAL: SECTION
SCALE: 1"=1'-0"

B D.2A PRIMARY DIRECTIONAL: SECTION
SCALE: 1"=1'-0"

C D.2A PRIMARY DIRECTIONAL & D.2B SECONDARY DIRECTIONAL : PARTIAL DIAGRAM
SCALE: NOT TO SCALE

GENERAL NOTES

**Portland International
Jetport**
1001 Westbrook Street
Portland, Maine 04102

Gensler
2020 K Street, Northwest
Suite 200
Washington DC 20006
Telephone 202.721.5200
Facsimile 202.872.8587

Issue	Date & Issue Description	By	Check
01	01/23/09 9% CONSTRUCTION DOCUMENTS	BR	CK
02	10/26/09 ISSUED FOR PERMIT	BR/SH	MJ/TO

Seal/Signature

Project Name
PWM Terminal Enhancement

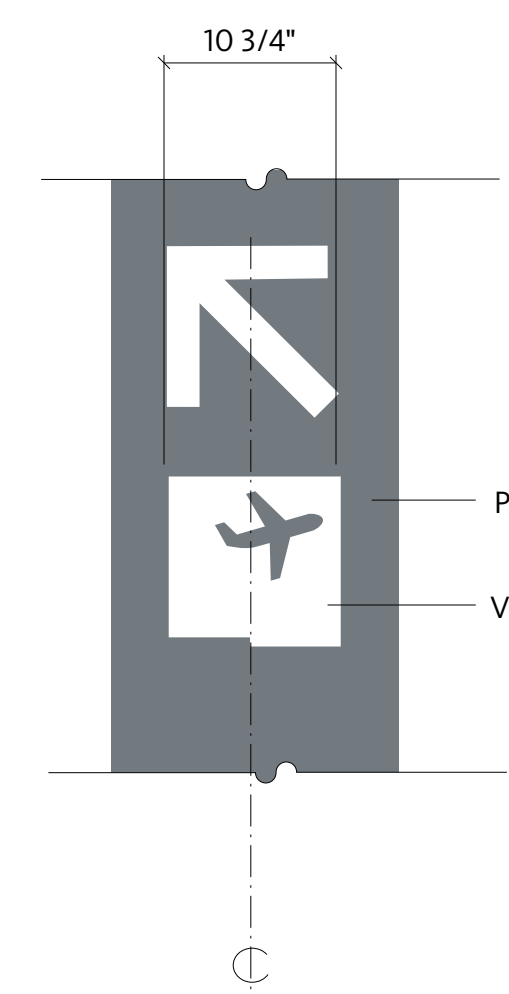
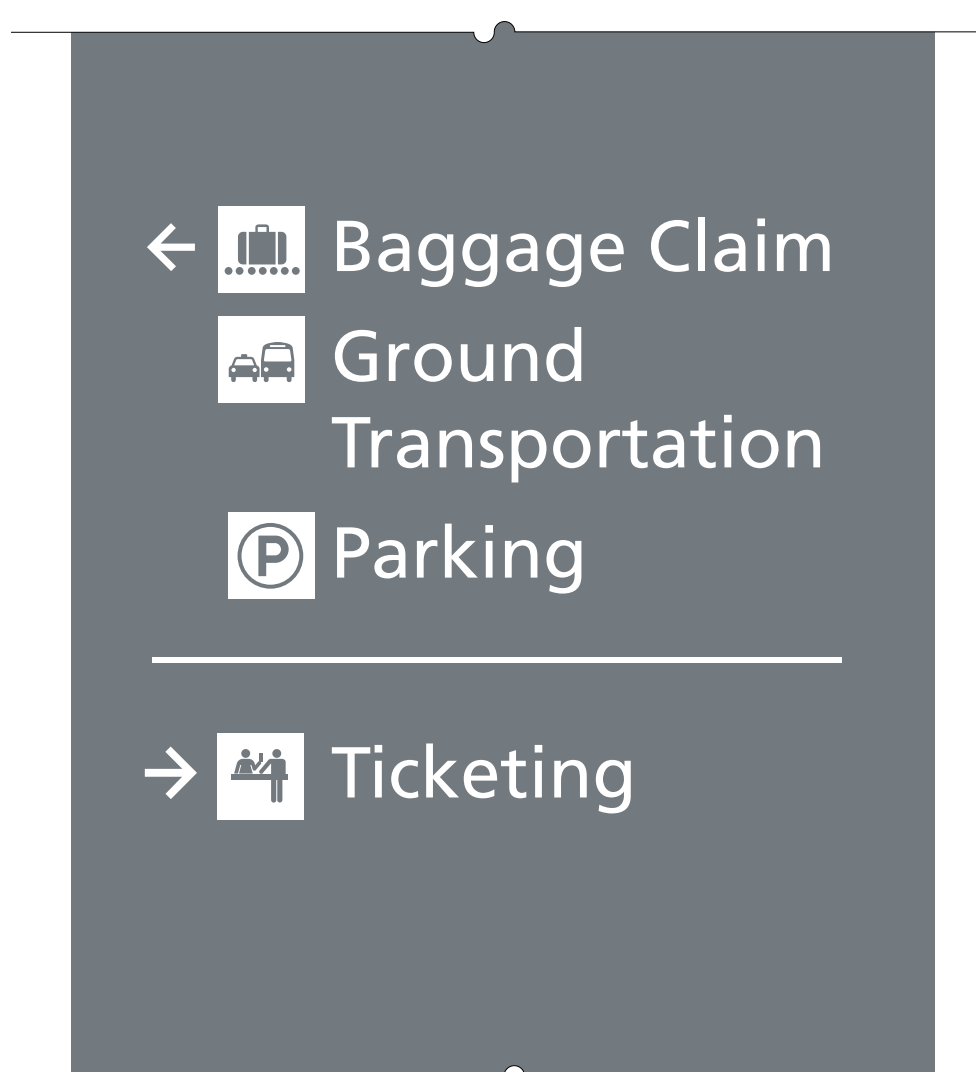
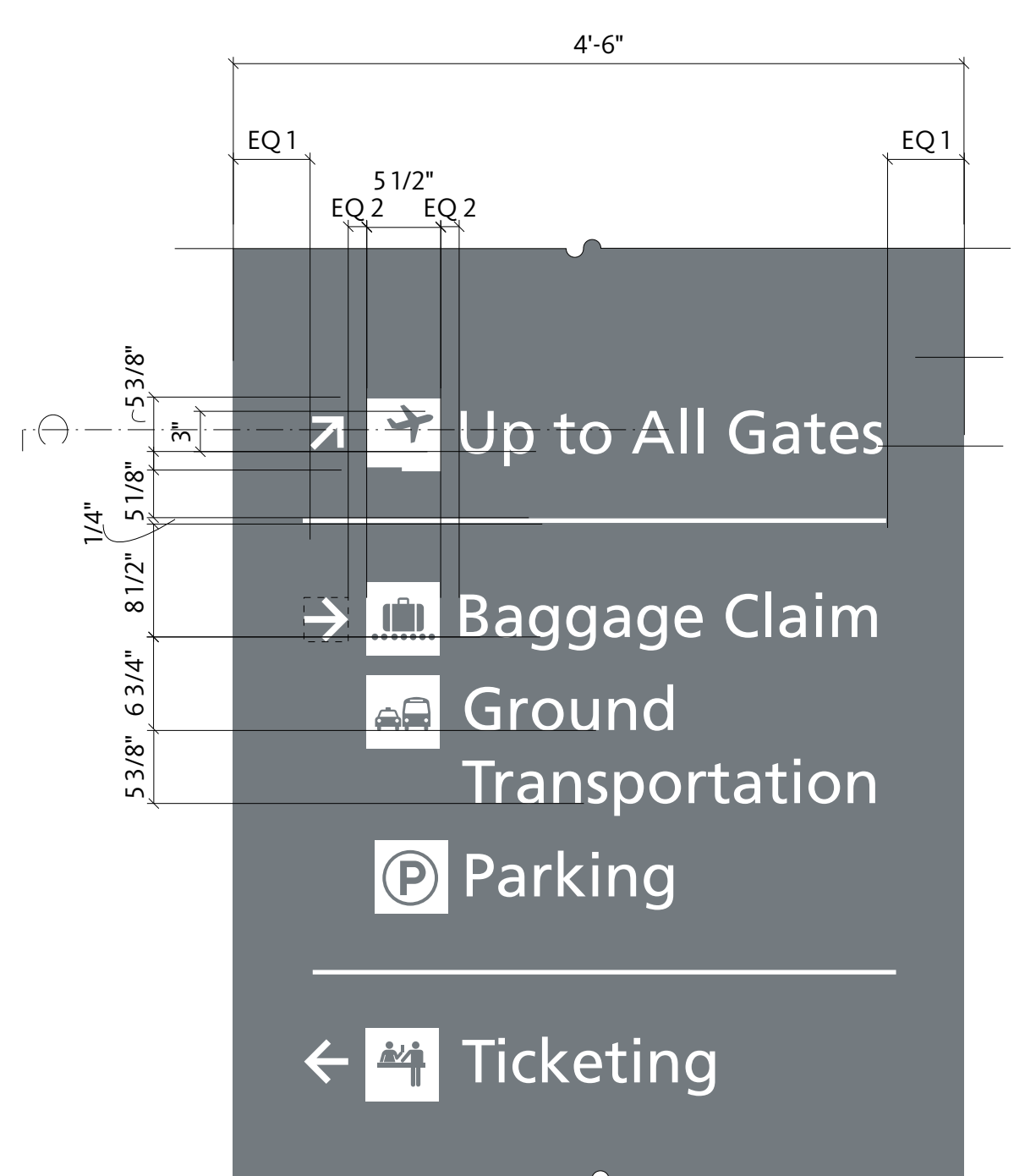
Project Number
09 6395.000

Description
SIGNAGE & WAYFINDING: ELEVATIONS, SECTIONS, DETAILS

Scale
As Indicated

A07.12.01

© 2009 Gensler



A D.2A PRIMARY DIRECTIONAL @ 2.01 SIDE B: DETAIL
SCALE: 1"=1'-0"

B D.2A PRIMARY DIRECTIONAL @ 2.01 SIDE A: LAYOUT
SCALE: 1"=1'-0"

C D.2A PRIMARY DIRECTIONAL @ 2.01 SIDES C&D: LAYOUT (OPPOSITE HAND SIMILAR)
SCALE: 1"=1'-0"