

ELEVATION SHOWN FOR REFERENCE ONLY
RE: STRUCTURAL DRAWINGS FOR EXTENT OF DEMOLITION

SHEET NOTES

- 01 DEMOLISH 5" THK PRECAST WALL PANEL, INSULATION AND 6" THK CMU BACK UP (FULL WALL HEIGHT)
- 02 DEMOLISH ALUMINUM STOREFRONT (FULL WALL HEIGHT)
- 03 DEMOLISH GWB INTERIOR FINISH (FULL WALL HEIGHT)
- 04 DEMOLISH EXISTING ROOF ASSEMBLY AND ASSOCIATED STRUCTURE.
- 05 DEMOLISH CONCRETE STAIR AND METAL HANDRAILS.
- 06 DEMOLISH IN ITS ENTIRETY DASHED IN PARTITIONS, DOORS, DOOR FRAMES, STOREFRONT SYSTEMS AND WALL FINISHES.
- 07 EXISTING FOUNDATION WALL TO REMAIN.
- 08 DEMOLISH EXISTING STEEL FRAMING
- 09 DEMOLISH EXISTING FOUNDATION WALL
- 10 DEMOLISH EXISTING FLOOR SLAB.
- 11 DEMOLISH PORTION OF EXISTING COLUMN AT CANOPY. RE: STRUCTURAL DRAWINGS FOR MORE INFORMATION
- 12 DEMOLISH ONLY AS REQUIRED EXISTING CEILING SYSTEM AND LIGHTS. RETAIN AND STORE AS MUCH AS POSSIBLE FOR REINSTALLATION.
- 14 DEMOLISH METAL CANOPY SECTION INCLUDING ROOF AND FRAMING. RE: STRUCTURAL DRAWINGS FOR MORE INFORMATION.
- 15 DEMOLISH IN ITS ENTIRETY THE BAGGAGE TUNNEL ENCLOSURE.
- 16 DEMOLISH PORTION OF CONCRETE SLAB. COORDINATE EXTENT OF DEMOLITION WITH NEW CONSTRUCTION.
- 17 DEMOLISH EXISTING METAL GRILL PANEL AND ASSOCIATED STEEL CONNECTIONS.
- 18 DEMOLISH EXISTING METAL PRIVACY SCREEN AND ASSOCIATED STEEL CONNECTIONS.
- 19 DEMOLISH EXISTING RAILING, RAIL INFILL PANEL AND BUMPER GUARD. COORDINATE EXTENT OF DEMOLITION WITH NEW CONSTRUCTION.
- 20 EXISTING RAILING AND BUMPER GUARD TO REMAIN.
- 21 DEMOLISH EXISTING ROD AT GARAGE CANOPY AND ASSOCIATED STEEL CONNECTIONS AT PARKING LEVEL 4 STEEL. RE: STRUCTURAL DRAWINGS FOR MORE INFORMATION
- 22 GRIND DOWN 2" HIGH WASH AT PERIMETER EDGE AND PRECAST CURB TO BE LEVEL WITH SLAB. RE: PLAN FOR EXTENT OF WORK.
- 23 REMOVE AND SALVAGE EXISTING METAL GRILL PANEL AND ASSOCIATED STEEL CONNECTIONS. TO BE RELOCATED/REUSED IN NEW CONSTRUCTION.
- 24 REMOVE AND SALVAGE EXISTING METAL PRIVACY SCREEN AND ASSOCIATED STEEL CONNECTIONS. TO BE RELOCATED/REUSED IN NEW CONSTRUCTION.

Portland International Jetport
1001 Westbrook Street
Portland, Maine 04102

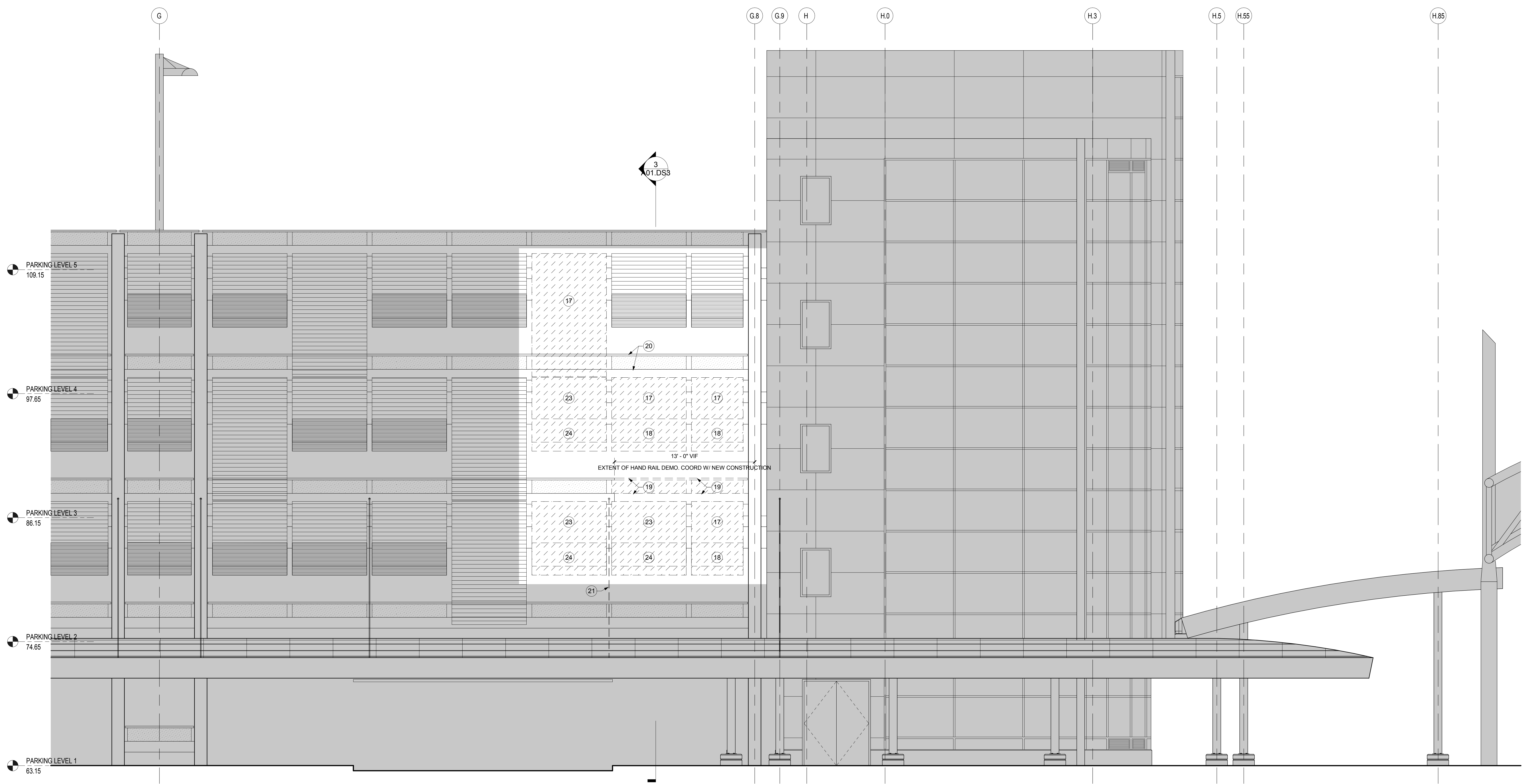
Gensler
2020 K Street, Northwest
Suite 200
Washington DC 20006
Telephone 202.721.5200
Facsimile 202.872.8587

DEMOLITION ELEVATION

SCALE: 1/4" = 1'-0"

A01.03.02

1



EXISTING GARAGE ELEVATION

SCALE: 1/4" = 1'-0"

2

Issue	Date & Issue Description	By	Check
01	12/01/09		
01	75% CONSTRUCTION DOCUMENTS		
01	01/23/09		
	95% CONSTRUCTION DOCUMENTS		
02	10/26/09		
	ISSUED FOR PERMIT		

Seal/Signature

 Project Name
 PWM Terminal Enhancement

Project Number
 09.6395.000
 Description
 DEMOLITION SECTIONS
 Scale
 As indicated

A01.DS4

© 2009 Gensler