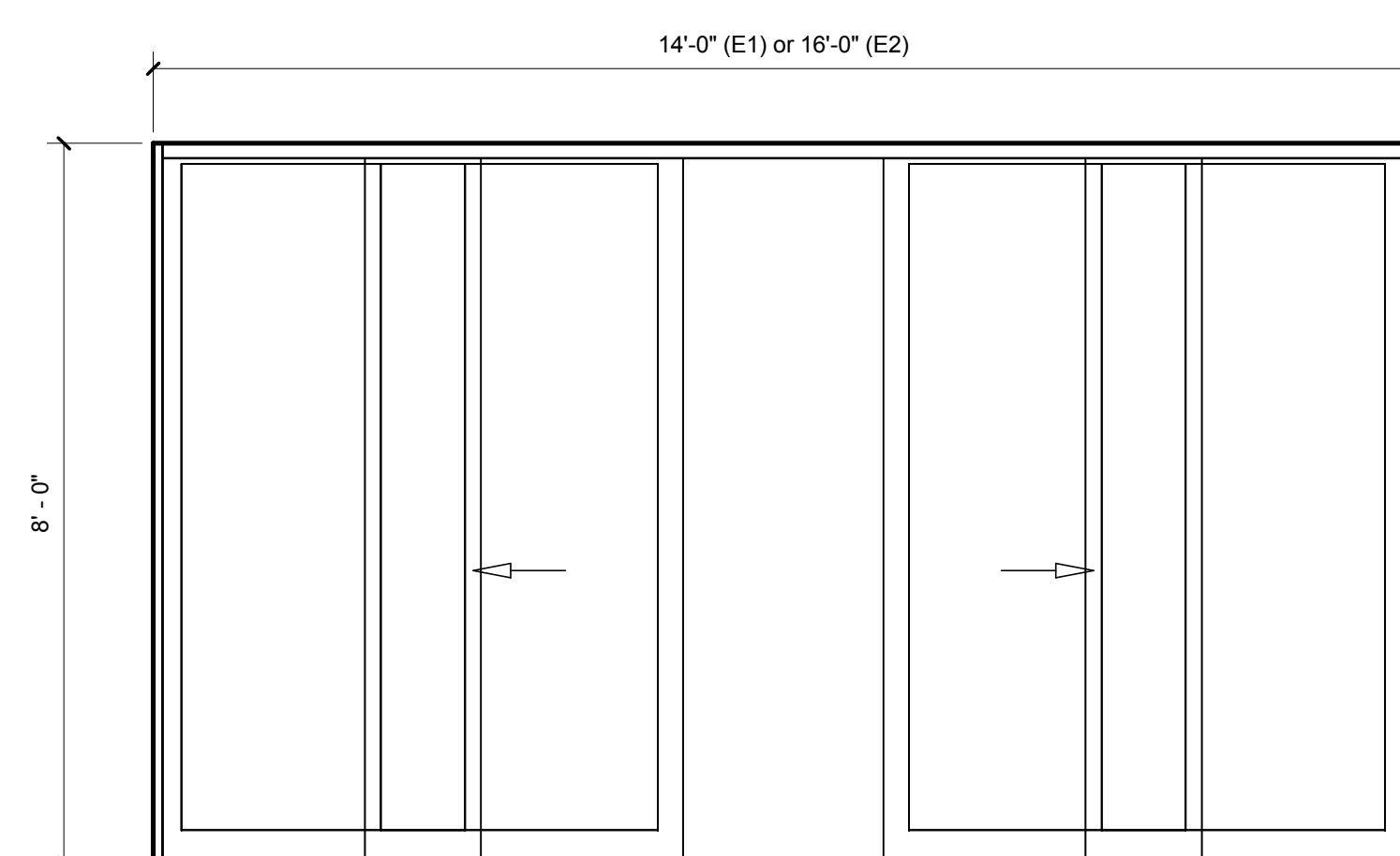


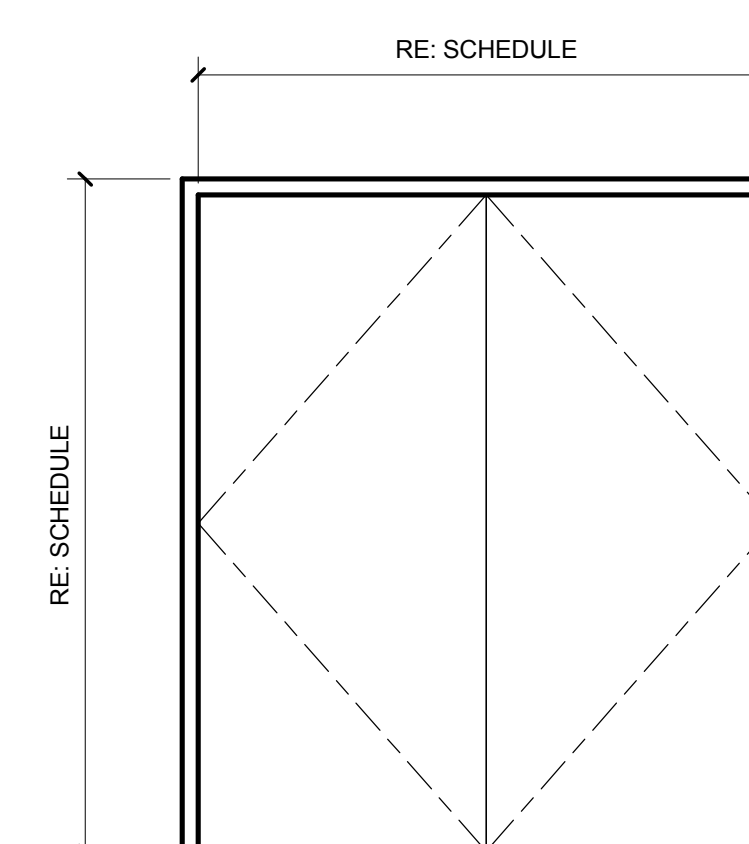
SHEET NOTES

Portland International Jetport
 1001 Westbrook Street
 Portland, Maine 04102

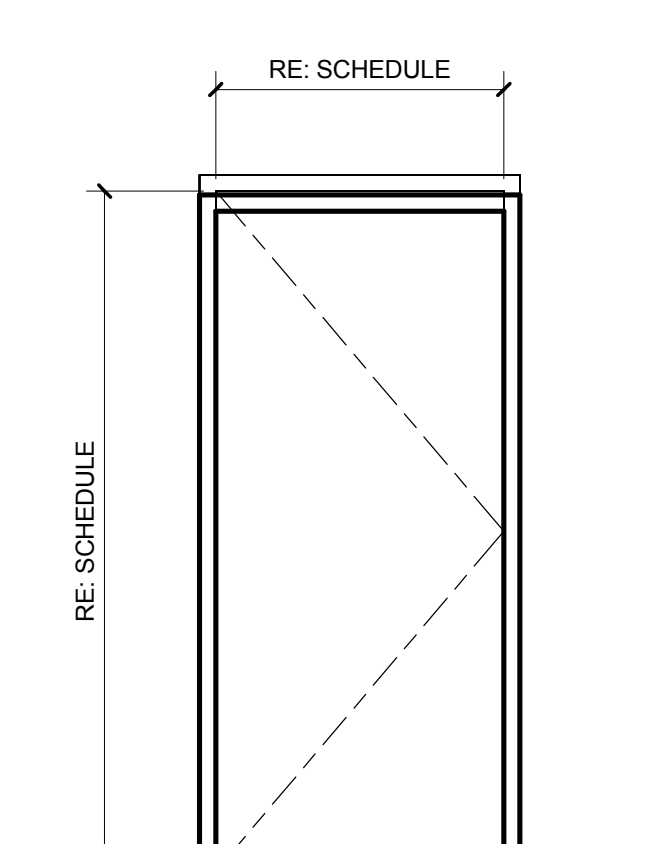
Gensler
 2020 K Street, Northwest
 Suite 200
 Washington DC 20006
 Telephone 202.721.5200
 Facsimile 202.872.8587



DOOR TYPE E1 & E2
 AUTOMATIC ENTRANCES WITH BREAK-OUT PANELS



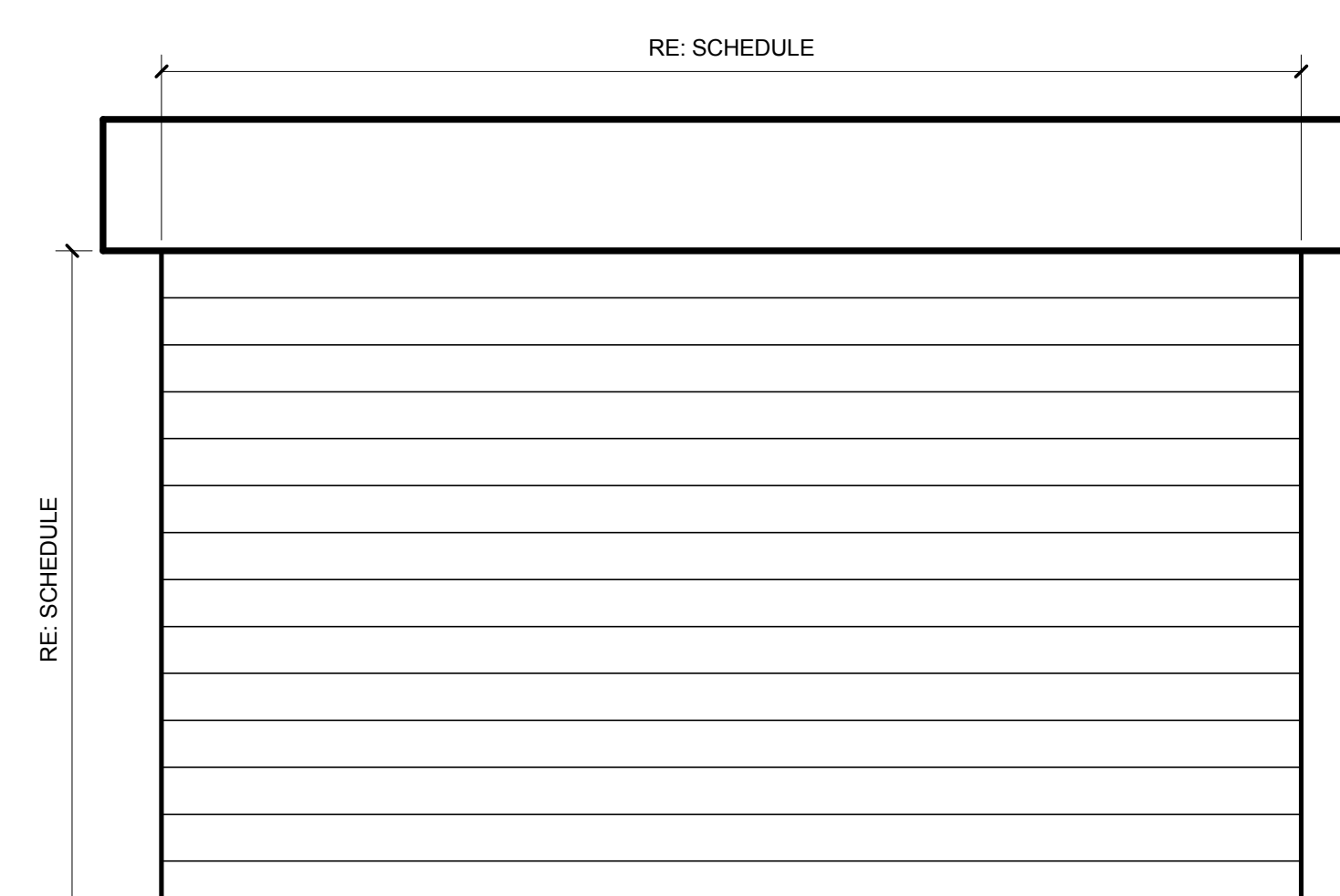
DOOR TYPE A2
 DOUBLE FLUSH DOOR



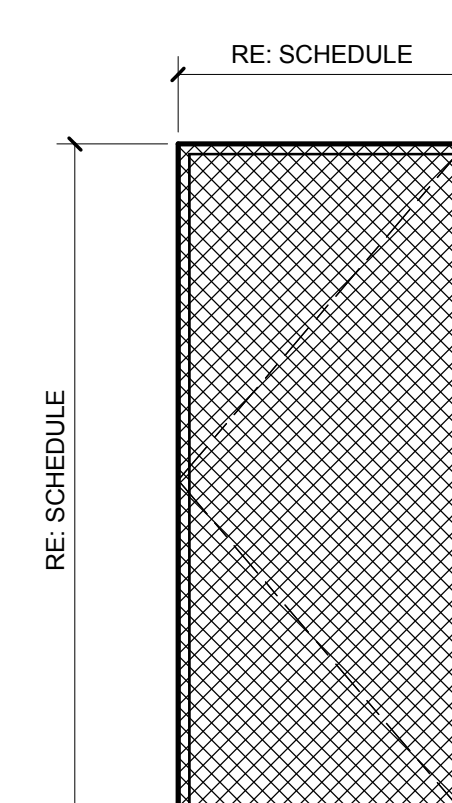
DOOR TYPE A1
 FLUSH DOOR

INTERIOR/EXTERIOR DOOR TYPES

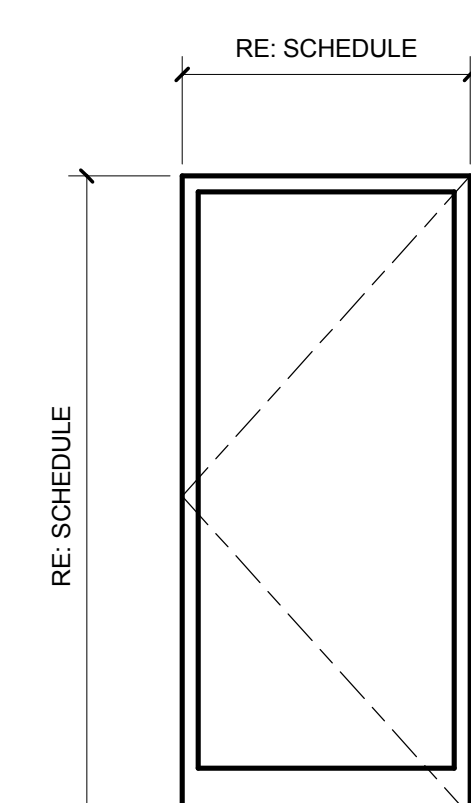
INTERIOR/EXTERIOR DOOR TYPES



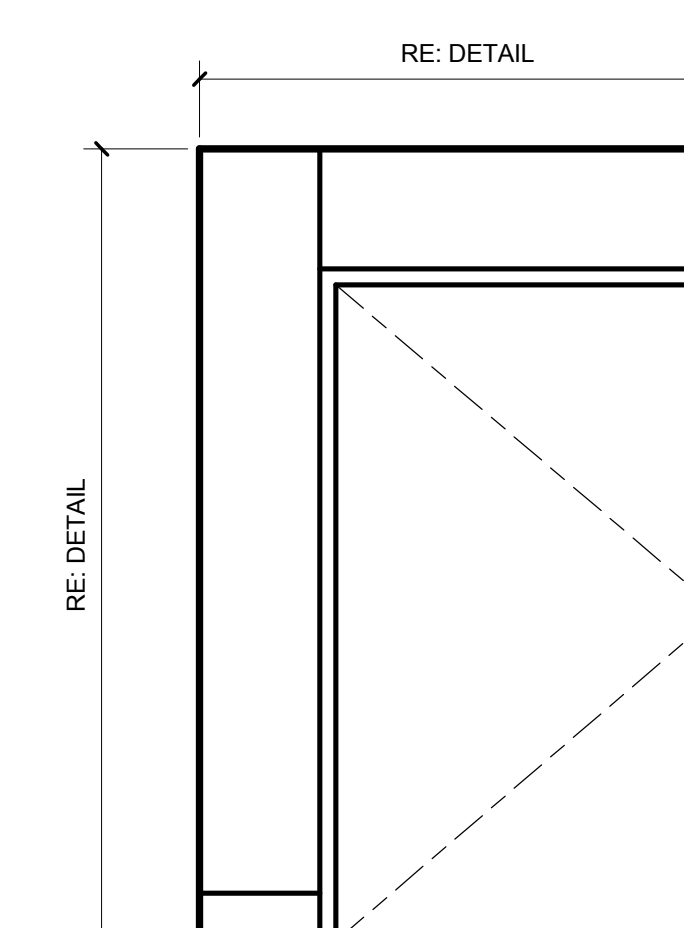
DOOR TYPE F
 FIRE SHUTTER



DOOR TYPE D
 WIRE MESH DOOR



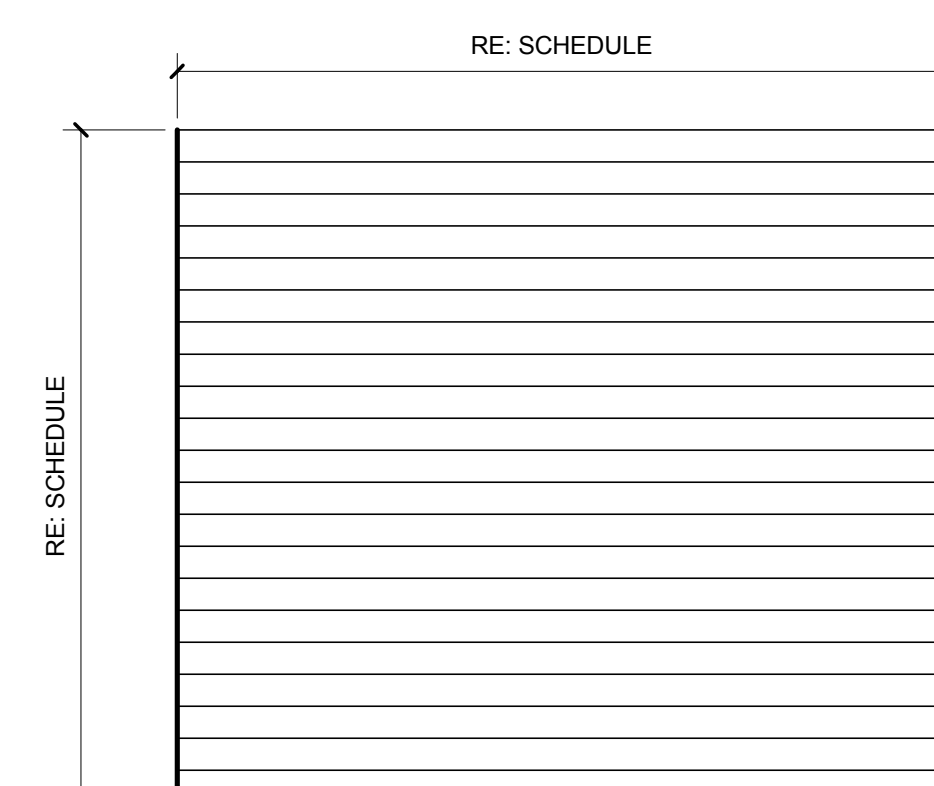
DOOR TYPE C
 SINGLE ALUMINUM STOREFRONT DOOR



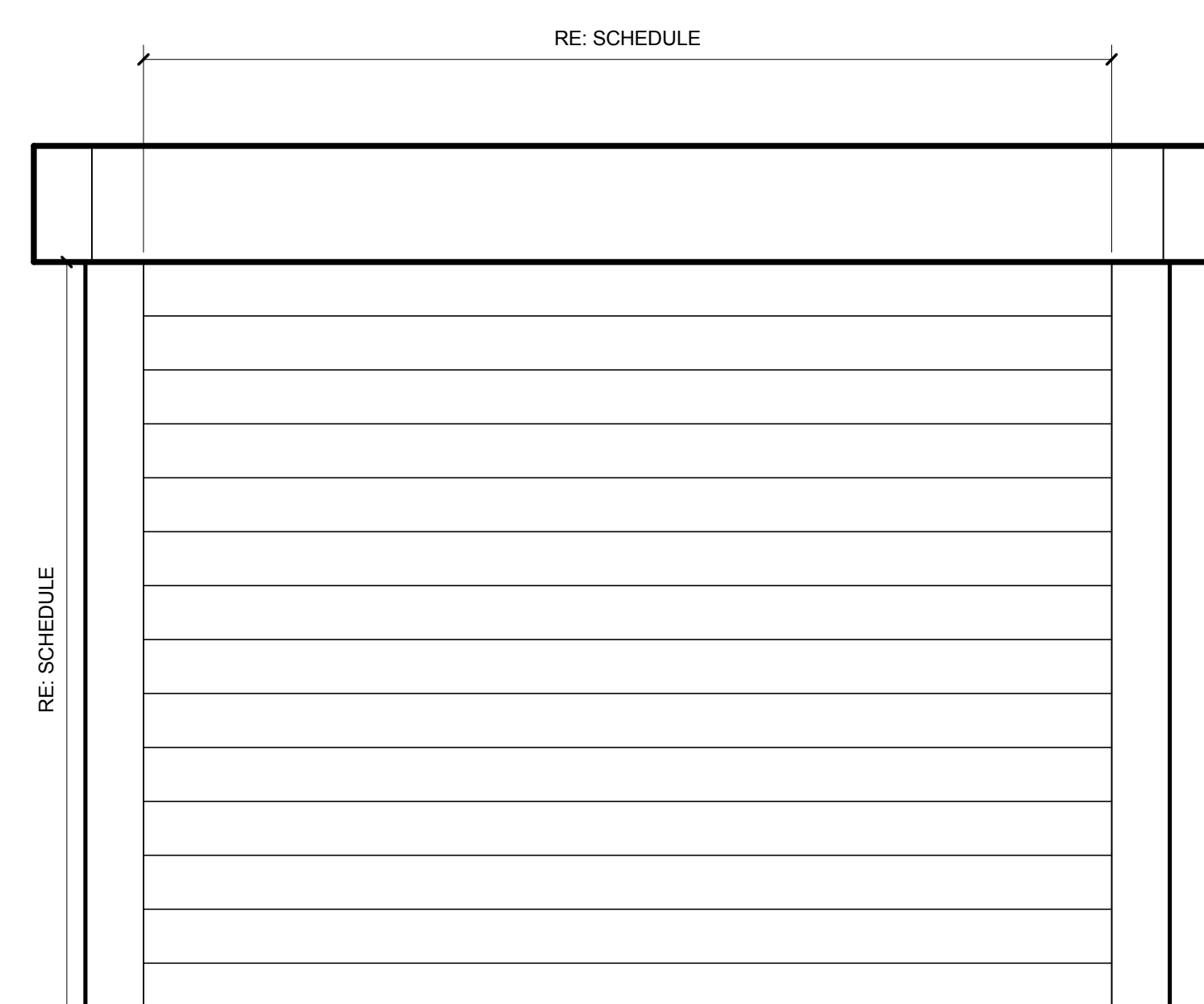
DOOR TYPE B
 SINGLE ST. STL. DOOR WITH SIDE AND TOP PANELS

INTERIOR DOOR TYPES

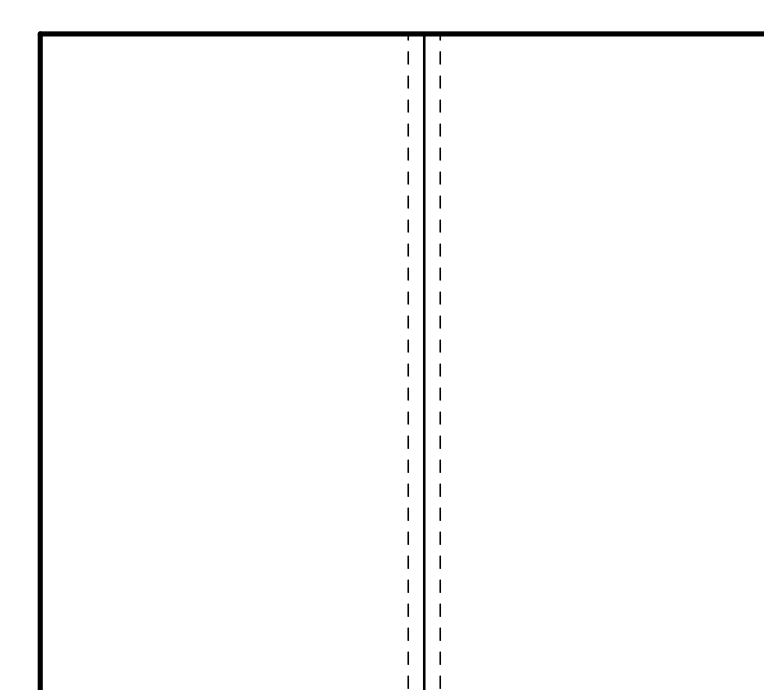
INTERIOR DOOR TYPES



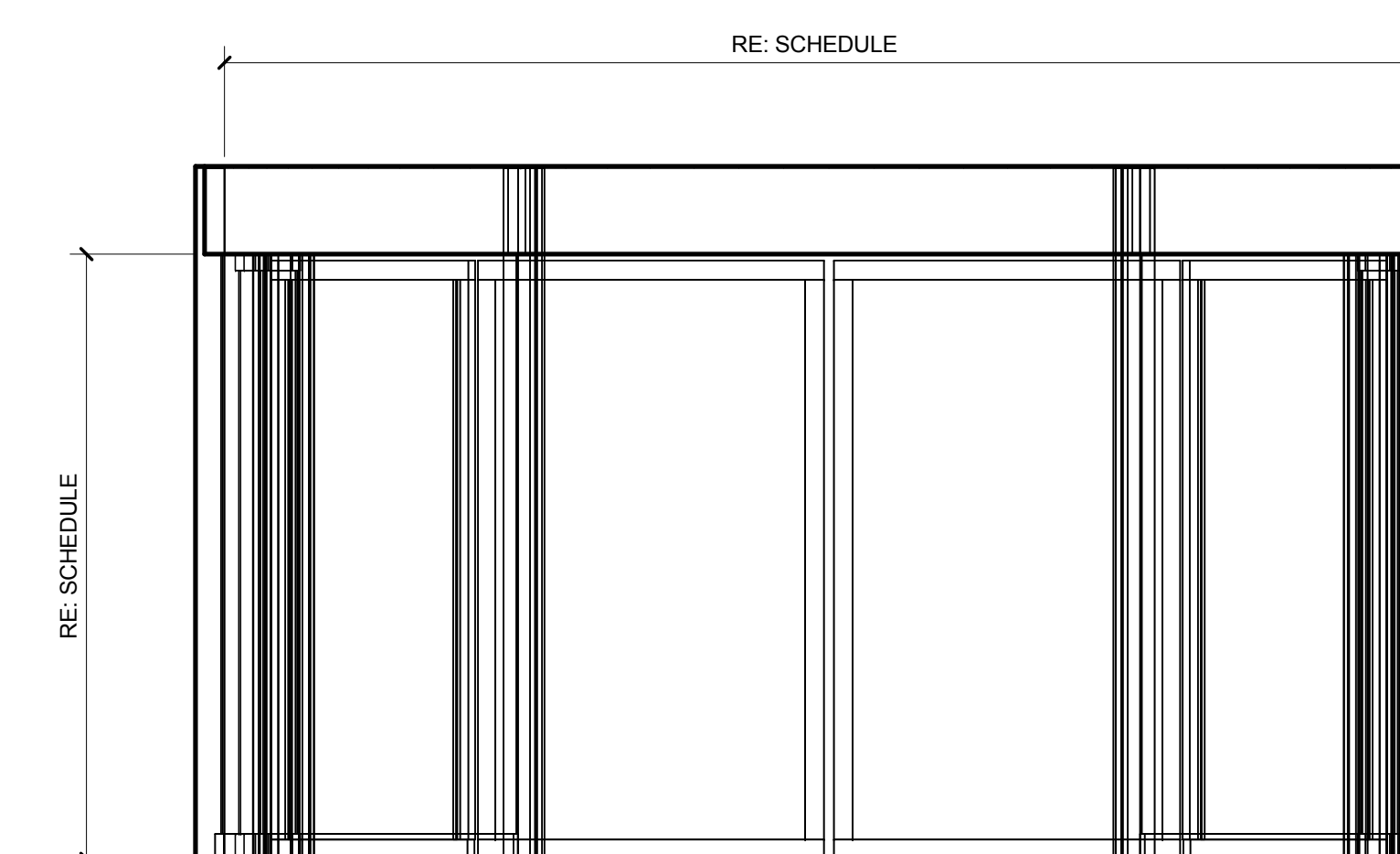
DOOR TYPE N
 UPWARD ACTING SECTIONAL STEEL DOOR



DOOR TYPE M
 FAST ACTING OVERHEAD COILING DOOR



DOOR TYPE L
 SLIDING GLASS DOOR



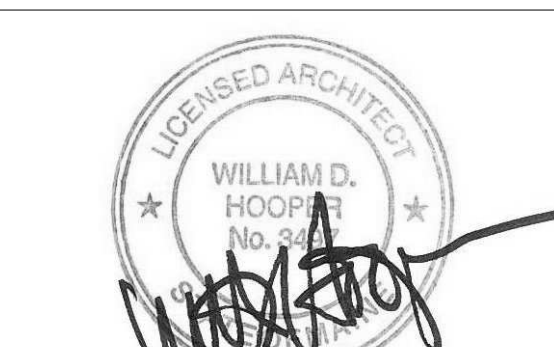
DOOR TYPE K
 REVOLVING DOOR

EXTERIOR DOOR TYPES

EXTERIOR DOOR TYPES

Issue	Date & Issue Description	By	Check
01	08/22/08		
02	12/03/08		
03	01/23/09		
04	10/28/09		

Seal/Signature



Project Name
 PWM Terminal Enhancement

Project Number
 09.6395.000

Description
 DOOR TYPES

Scale
 1/2" = 1'-0"

A00.31

© 2009 Gensler