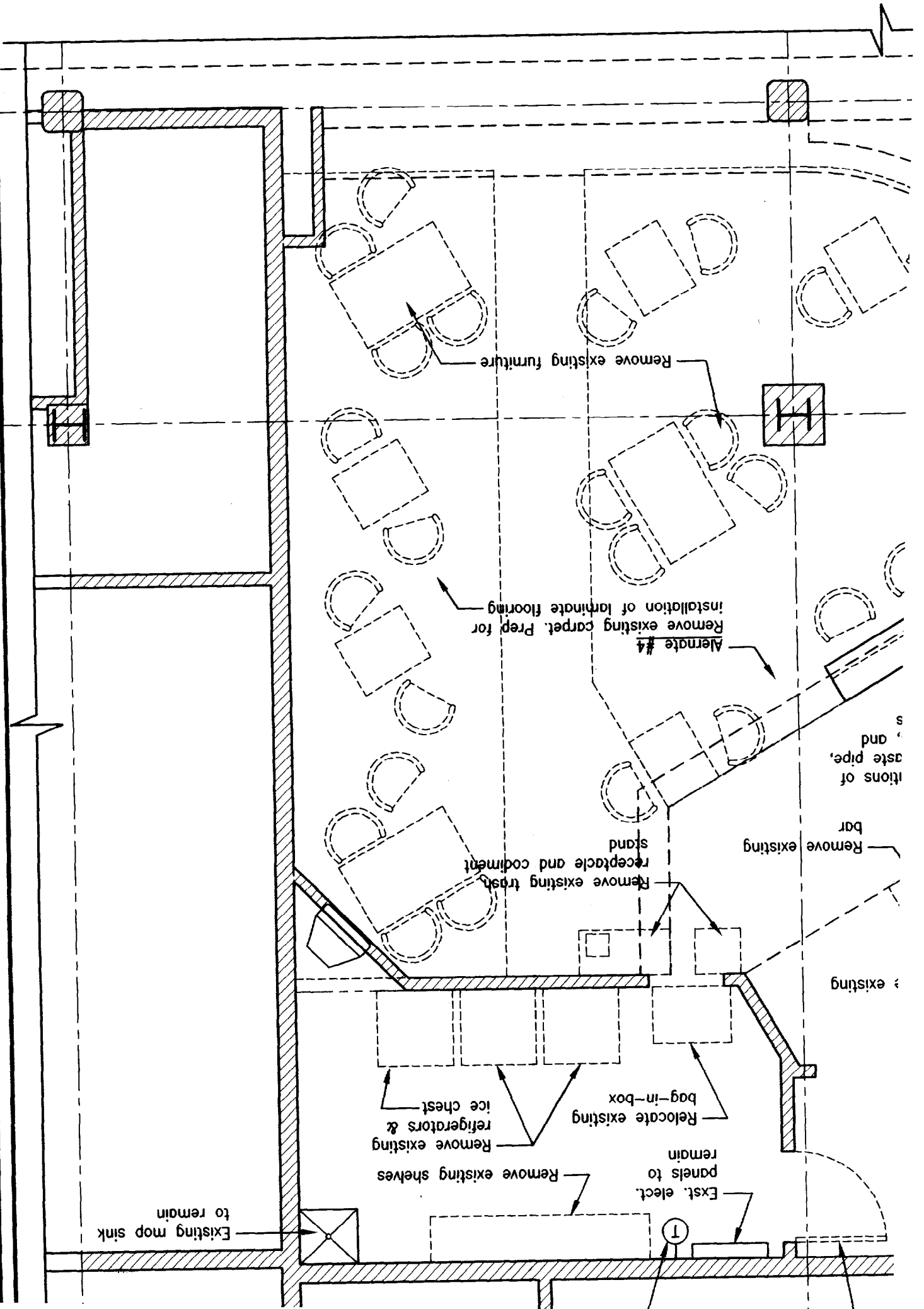
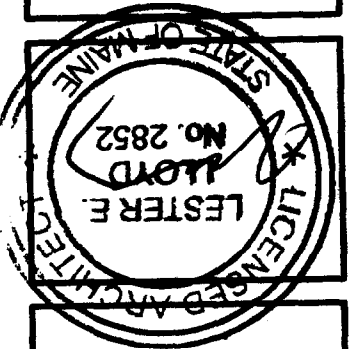


1
Demolition plan
1/4"=1'-0"



Demolition Plan
Key Plan &
Issued: 9/05/03
Scale: As noted
Job No.: 03412

LLOYD ARCHITECTS
Two High Cliff, Plymouth MA 02360
TEL: (508) 746-4646
FAX: (508) 746-1236
E-MAIL: info@lloydarch.com



HMS Host
6600 Rockledge Drive
Bethesda, MD 20817
Ph: (240) 694-4693
Fax: (240) 694-4175
Contact: Nestor Sanchez

The Shipyard
Portland International Jetport
1001 Westbrook Street
Portland, ME 04102