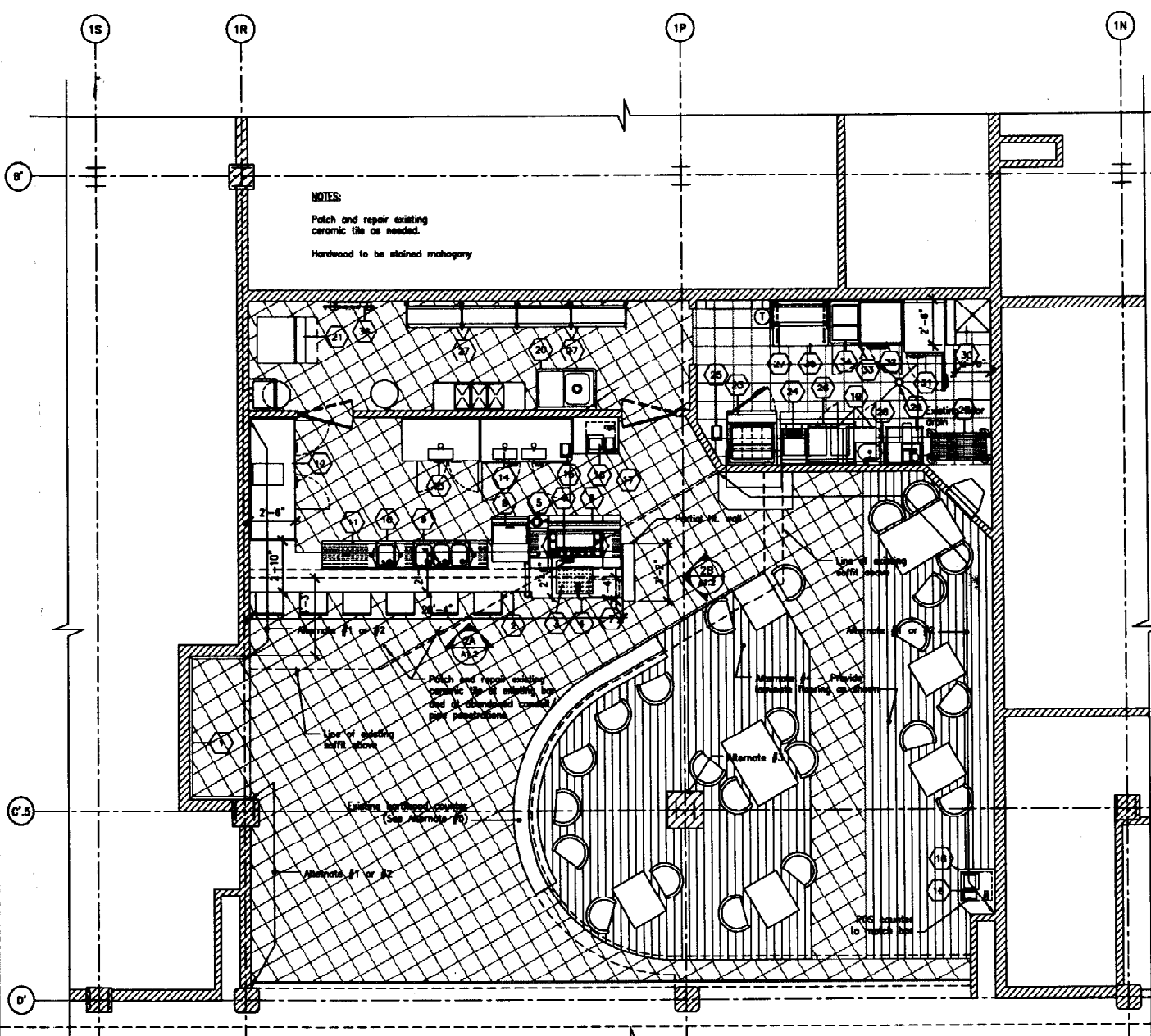
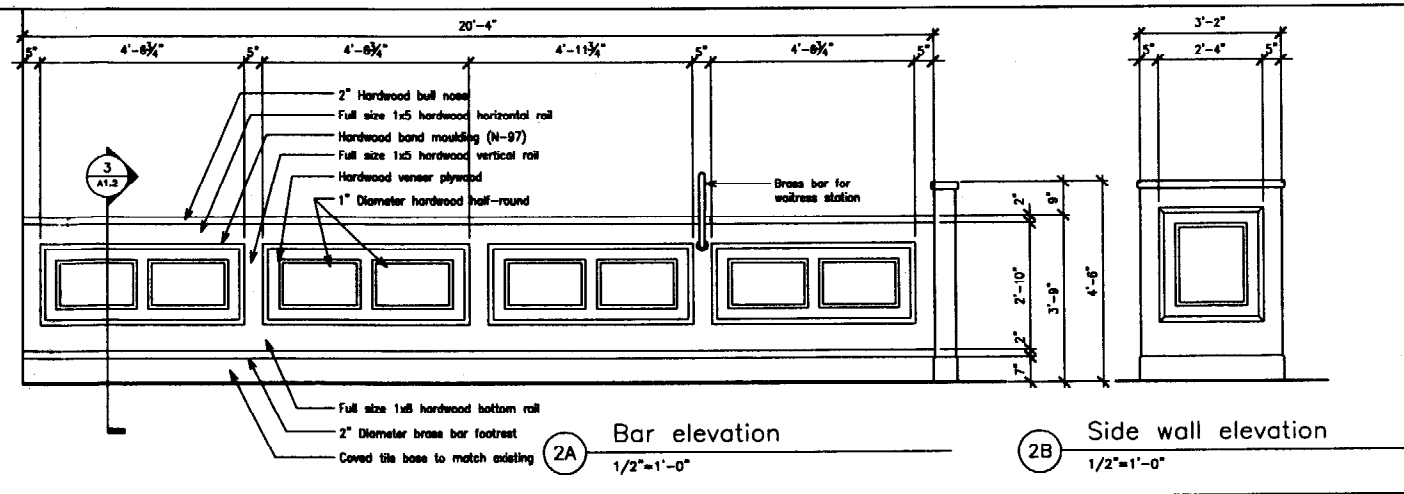


PANEL SCHEDULE PRL1A													
CKT NO	SERVICE DESCRIPTION	WATTAGE			BKR	POLES	ABC	POLES	BKR	WATTAGE			CKT NO
		VA	W	VA						W	VA	W	
1	ICE MAKER #21	1872			25			1	20	996			2
3		1872			2			1	20	540			4
5	COOLER #12 (EX.)	1800			20			1	20	540			6
7	MICROWAVE #19	1435			20			2	20	3652			8
9		1435			2			1	20	946			10
11	MICROWAVE #18	1435			20			1	20	1800			12
13		1435			2			1	20	880			14
15	CONVEYOR TOASTER #24	2122			25			1	20	800			16
17		2122			2			1	20	800			18
19	BEER DISPENSER #13	864			20			1	20	1200			20
21	BEER DISPENSER #14 (EX.)	864			20			1	20	1200			22
23	SPARE (FUTURE)				20			1	20				24
25	SPARE (FUTURE)				20			1	20				26
27	MUG FROSTER #8	782			20			1	20	1380			28
29	SPARE (FUTURE)				20			1	20				30
31	SPARE (FUTURE)				20			1	20				32
33	SPARE (FUTURE)				20			1	20				34
35	SPARE (FUTURE)				20			1	20				36
37	SPACE												38
39	SPACE												40
41	SPACE												42

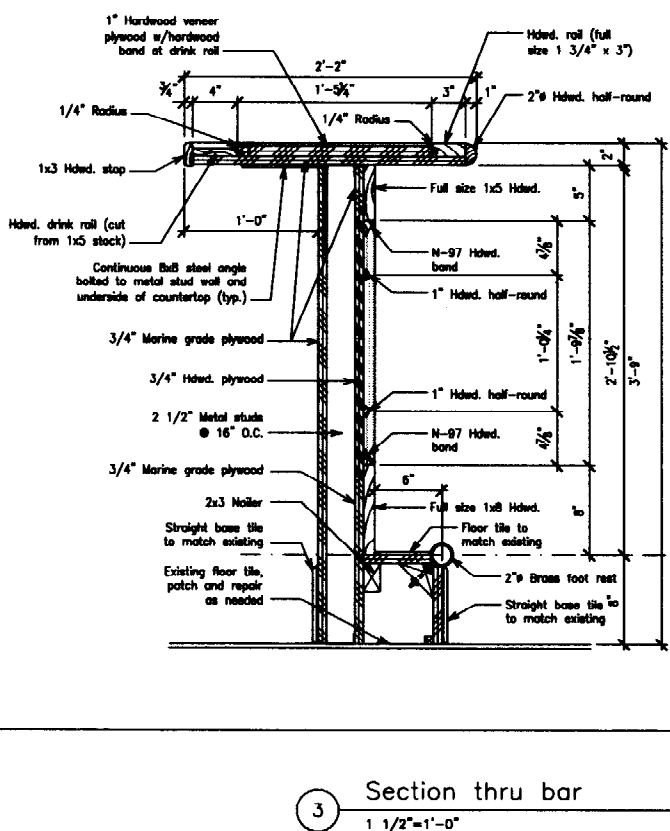
PANEL SCHEDULE NOTES:
 1. EXISTING PANELBOARD IS MANUFACTURED BY WESTINGHOUSE. PROVIDE ALL NEW CIRCUIT BREAKERS TO MATCH EXISTING.
 2. EXISTING CIRCUIT BREAKERS NOT BEING RE-USED SHALL REMAIN AND BE USED AS SPARE.



ALTERNATES:
 #1. Hwd. wainscot to match bar w/wallcovering above and below
 #2. Hwd. chair rail to match bar w/wallcovering above and below
 #3. Wrap column w/hardwood
 #4. Laminate flooring
 #5. Cover curved oak counter w/hwd. to match bar



Item No	Equipment Category	Utilities
1	Retail Display Panels	
2	Bar Top & Die	
3	Perforated Drain	1" Induct. Waste
4	Soda Gun	
5	Blender	120v. 1 ph. 11.5 amps
6	Pour Station	
7	Trash Receptacle	
8	Mug Froster	Duplex Recept. - 120v. 1 ph. 8.8 amps
9	3 Comp. Sink - Existing	
10	Hand Sink	
11	Drainboard	1" Induct. Waste
12	Cooler - Existing	
13	Beer Dispenser	Duplex Recept. - 120v. 1 ph. 7.2 amps
14	Beer Dispenser - Existing	
15	Remote Printer	
16	POS	Duplex Recept. - 120v. 1 ph. 16.8 amps (Ind. Circuit)
17	POS Counter - Existing	
18	POS Counter	
19	Microwaves w/ Shelf	Single Recept. - 200 volt, 1 ph. 13.8 amps
20	Prep table w/sink	1 1/2" Induct. Waste, 1/2" cu. 1/2" in
21	Ice Maker / Bin	Just-in Bar - 200 volt, 1 ph. 16.8 amps 1/2" Induct. or
22	Shelving - By Ops	
23	Sandwich Prep	Duplex Recept. - 120v. 1 ph. 5.5 amps
24	Conveyor Toaster	Single Recept. - 200 volt, 1 ph. 20.4 amps
25	Remote Printer	Duplex Recept. - 120v. 1 ph. 5.8 amps (Ind. Circuit)
26	Hot Well Counter	
27	Wall Shelving	
28	Hand Sink	1 1/2" Induct. Waste, 1/2" cu. 1/2" in
29	Soda Rack / System - Existing	Duplex Recept. - 120v. 1 ph. 15.0 amps 1/2" Induct. or
30	Mop Sink - Existing	
31	Freezer	Duplex Recept. - 120v. 1 ph. 7.8 amps
32	Turbo Chef Oven	Single Recept. - 200 volt, 1 ph. 38.0 amps
33	Work Top Refrigerator	Duplex Recept. - 120v. 1 ph. 4.5 amps
34	Food Warmer	Duplex Recept. - 120v. 1 ph. 8.3 amps
35	Work Table	
36	Water Filter	3/4" or



Item	Date

THE SHIPYARD BREWING COMPANY
 1001 Westbrook Street
 Portland, ME 04102

The Shipyard
 Portland International Jetport
 1001 Westbrook Street
 Portland, ME 04102

HMS Host
 6600 Rockledge Drive
 Bethesda, MD 20817
 Ph: (240) 694-4693
 Fax: (240) 694-4175
 Contact: Nestor Sanchez

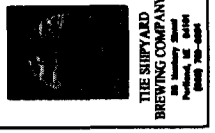
LLOYD ARCHITECTS
 Two High Center, Plymouth, MA 02560
 TEL: (508) 746-1556
 FAX: (508) 746-1556
 E-MAIL: ls@lloydarch.com

Job No: 03412
 Scale: As noted
 Issued: 9/05/03

Floor Plan, Details & Schedules

A1.2

Item	Date



The Shipyard
 Portland International Report
 1001 Westbrook Street
 Portland, ME 04102

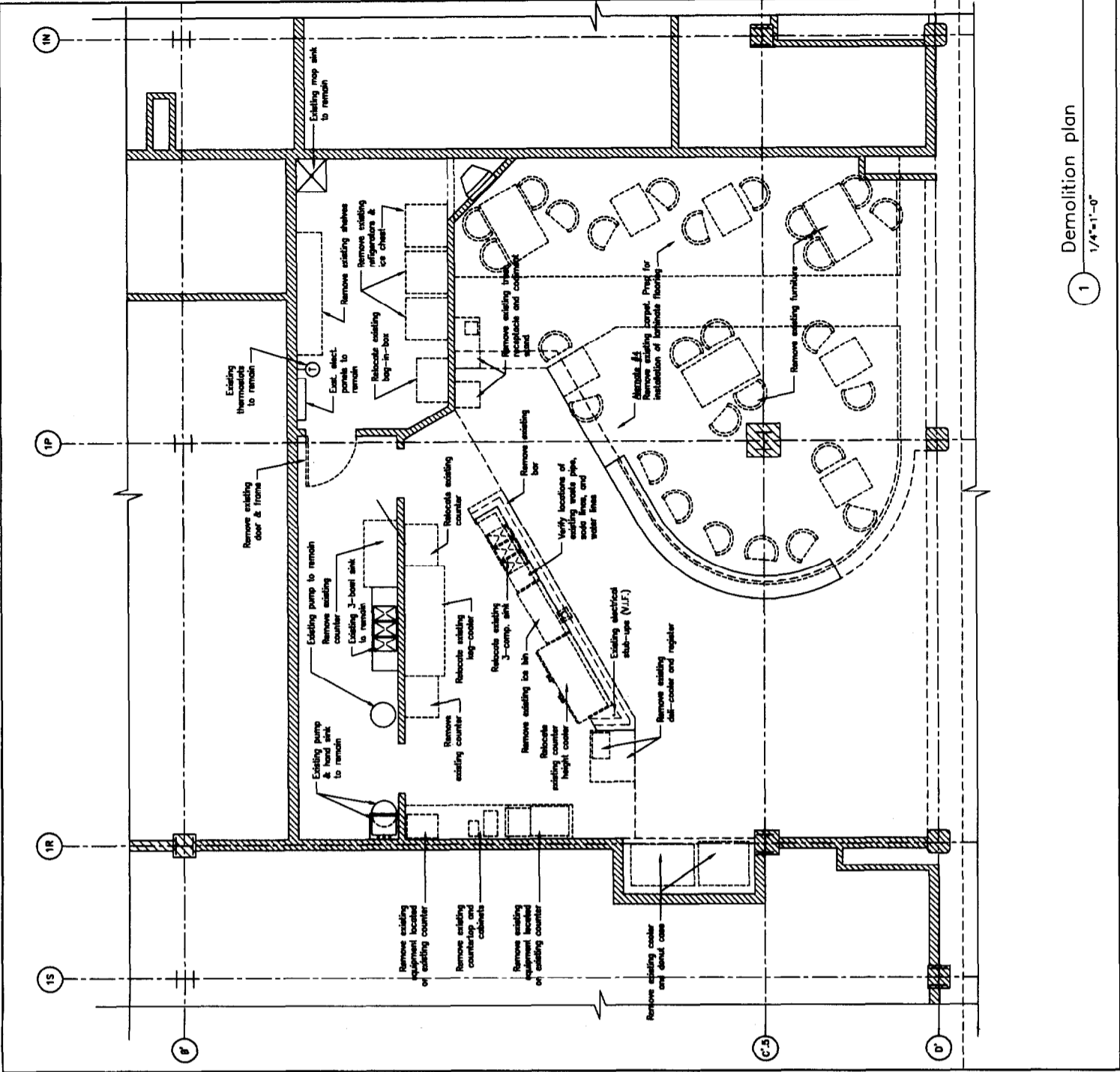


HMS HOST
 6600 Backstage Drive
 Bethesda, MD 20817
 P: (301) 656-4171
 F: (301) 656-4172
 Contact: Steve Sankov

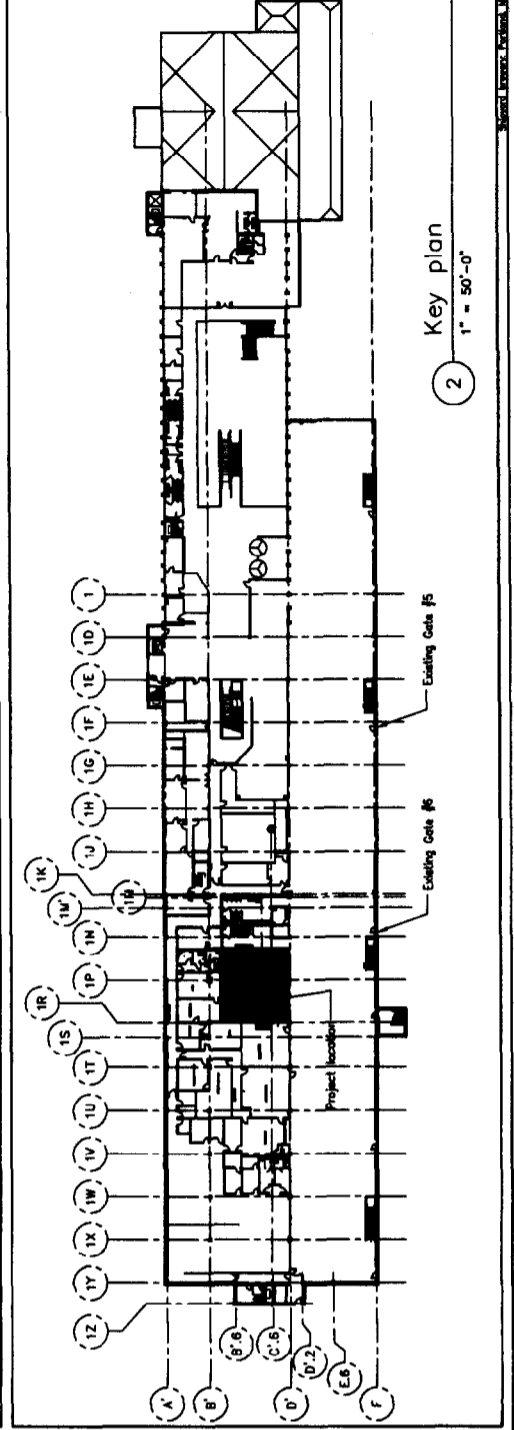
LLOYD ARCHITECTS
 TWO HIGHLIFF, PLYMOUTH MA 02360
 TEL: (508) 745-4444
 FAX: (508) 745-1236
 E-MAIL: info@lloydarch.com

Job No.: 09412
 Scale: As noted
 Issues: 9/05/03
Key Plan & Demolition Plan

A1.1



1 Demolition plan
 1/4"=1'-0"



2 Key plan
 1"=50'-0"