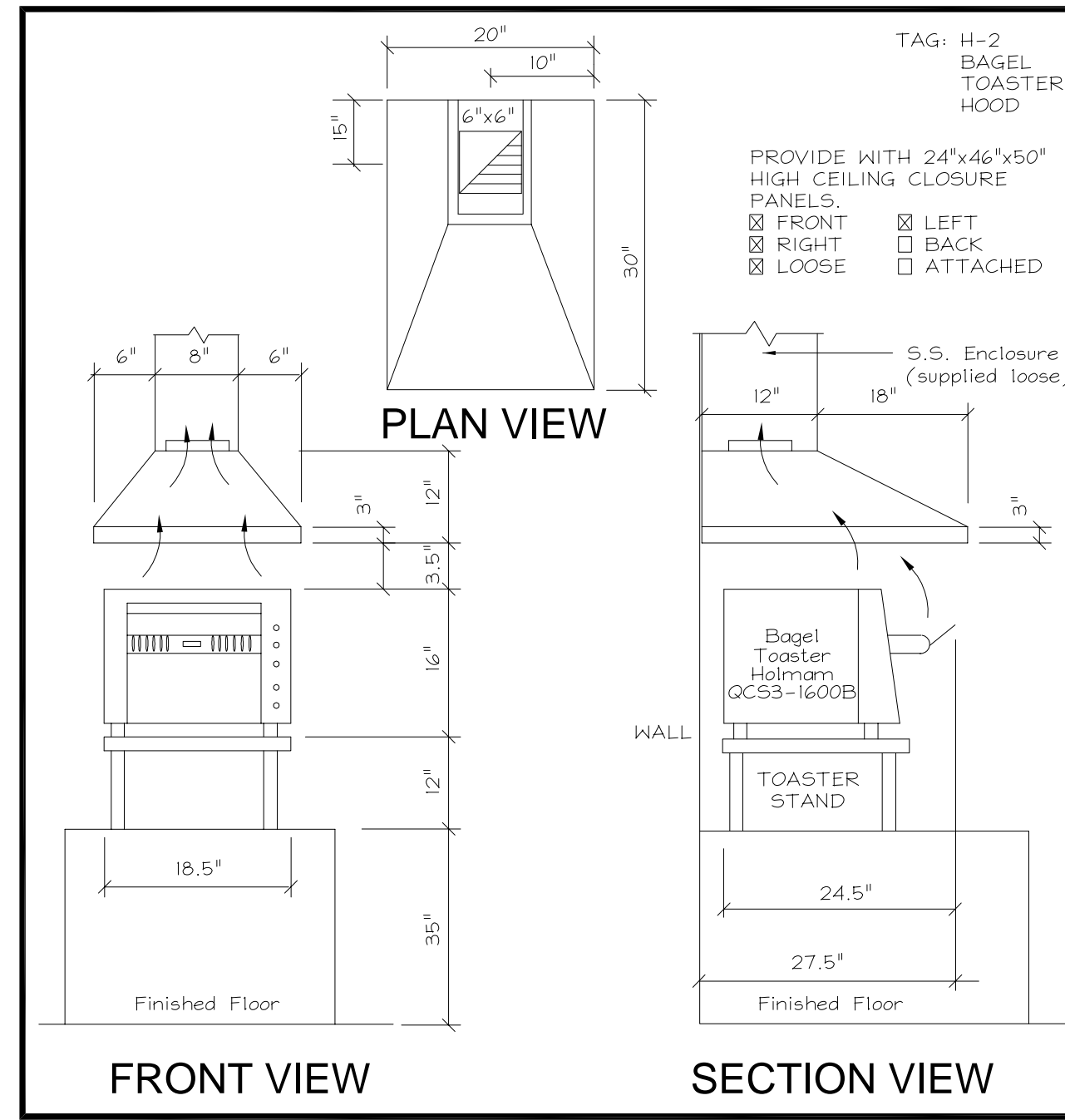
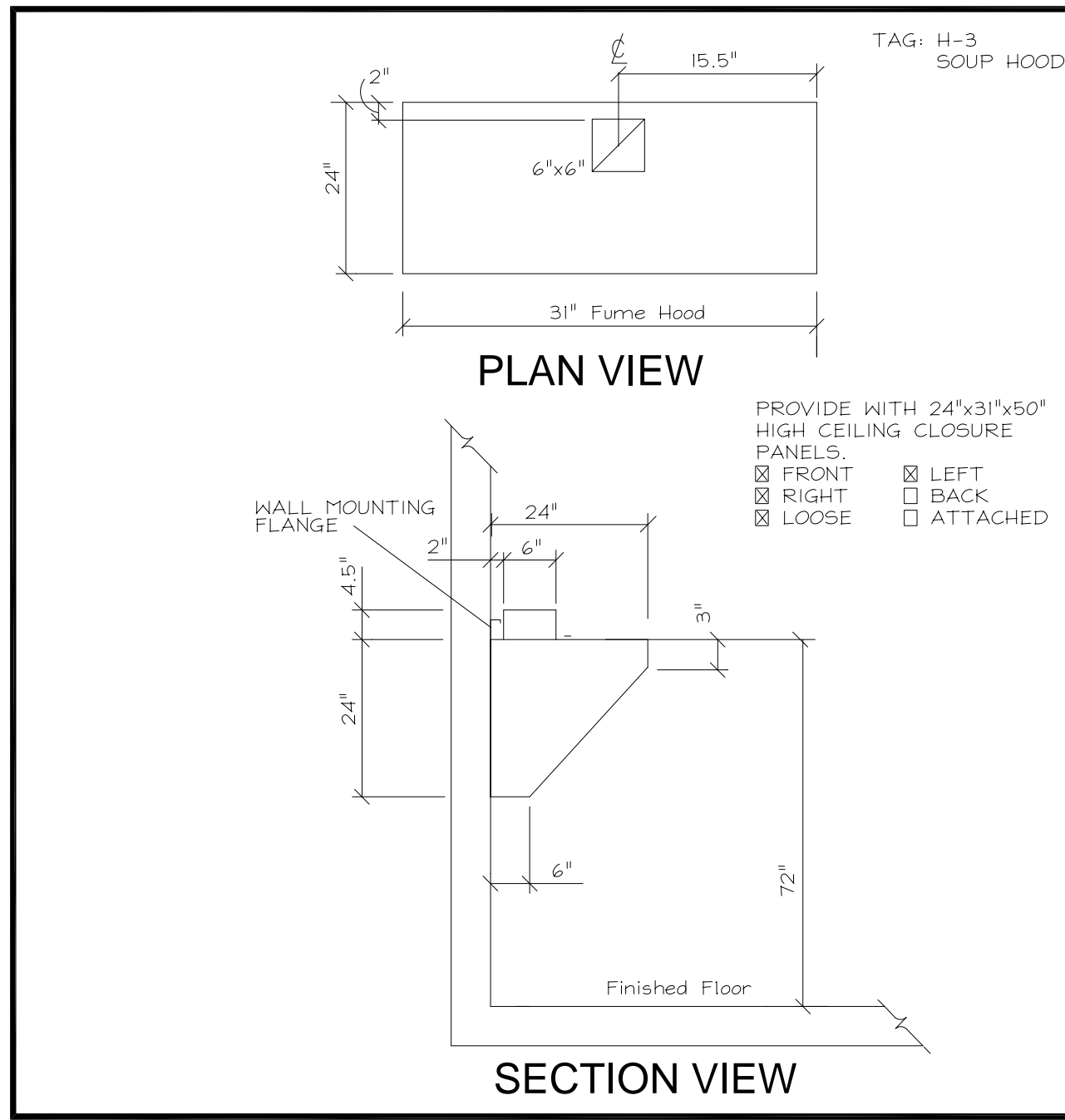


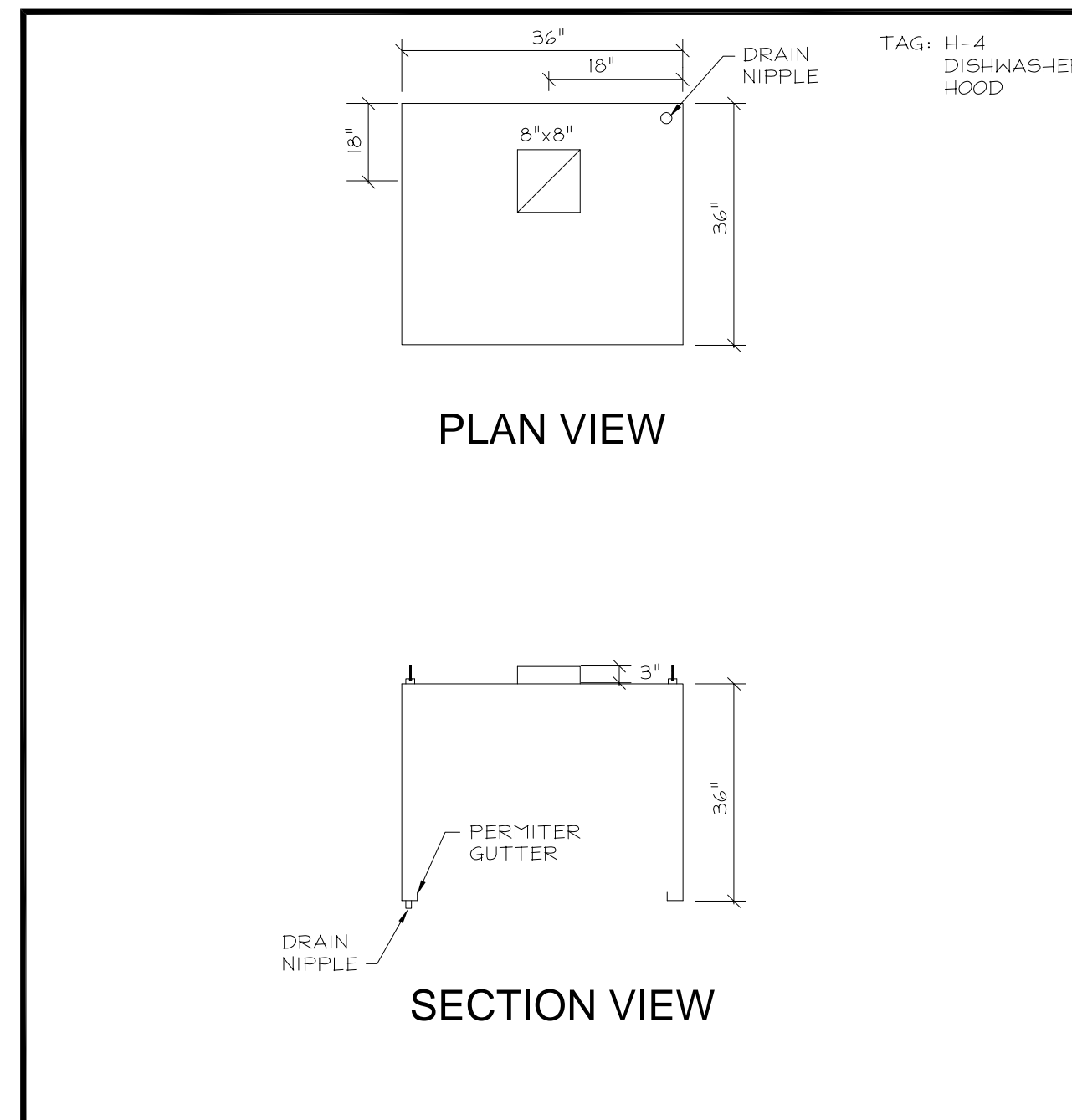
NSF	
MODEL NO. ADH	
MATERIAL Interior 18 GA. STAINLESS STEEL Exterior 18 GA. STAINLESS STEEL	
FINISH #3 POLISH	
LIGHTS - U.L. LISTED N/A	
FILTERS - U.L. CLASSIFIED (1) - 12"x20"	
CFM	300
Exhaust	
CONTROLS	
OTHER	
PROJECT TIM HORTON'S 1630	
LOCATION ANYWHERE, USA	
ARCHITECT	
ENGINEER	
CONTRACTOR	
SUBMITTED BY	
DATE	5-11-2000
JOB#	SUBMITTAL
AEROLATOR SYSTEMS, INC. 2716 CHAMBER DRIVE MONROE, NC 28110 Phone: (800) 843-8286	



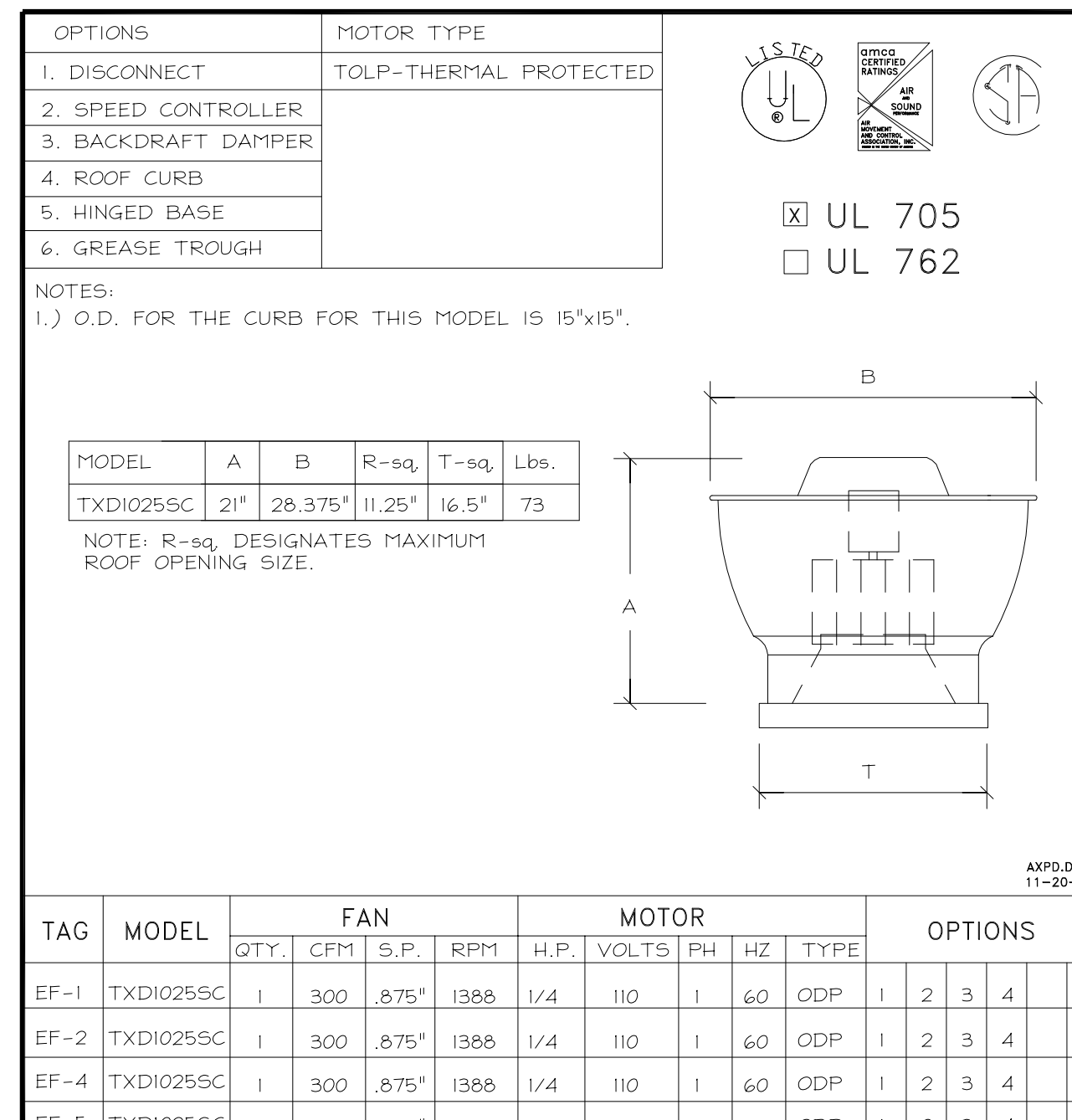
NSF	
MODEL NO. ADH	
MATERIAL Interior 18 GA. STAINLESS STEEL Exterior 18 GA. STAINLESS STEEL	
FINISH #3 POLISH	
LIGHTS - U.L. LISTED N/A	
FILTERS - U.L. ALUMINUM BAFFLE NONE	
CFM	300
Exhaust	
CONTROLS	
OTHER	
PROJECT TIM HORTON'S 1630	
LOCATION ANYWHERE, USA	
ARCHITECT	
ENGINEER	
CONTRACTOR	
SUBMITTED BY	
DATE	1-20-2004
JOB#	SUBMITTAL
AEROLATOR SYSTEMS, INC. 2716 CHAMBER DRIVE MONROE, NC 28110 Phone: (800) 843-8286	



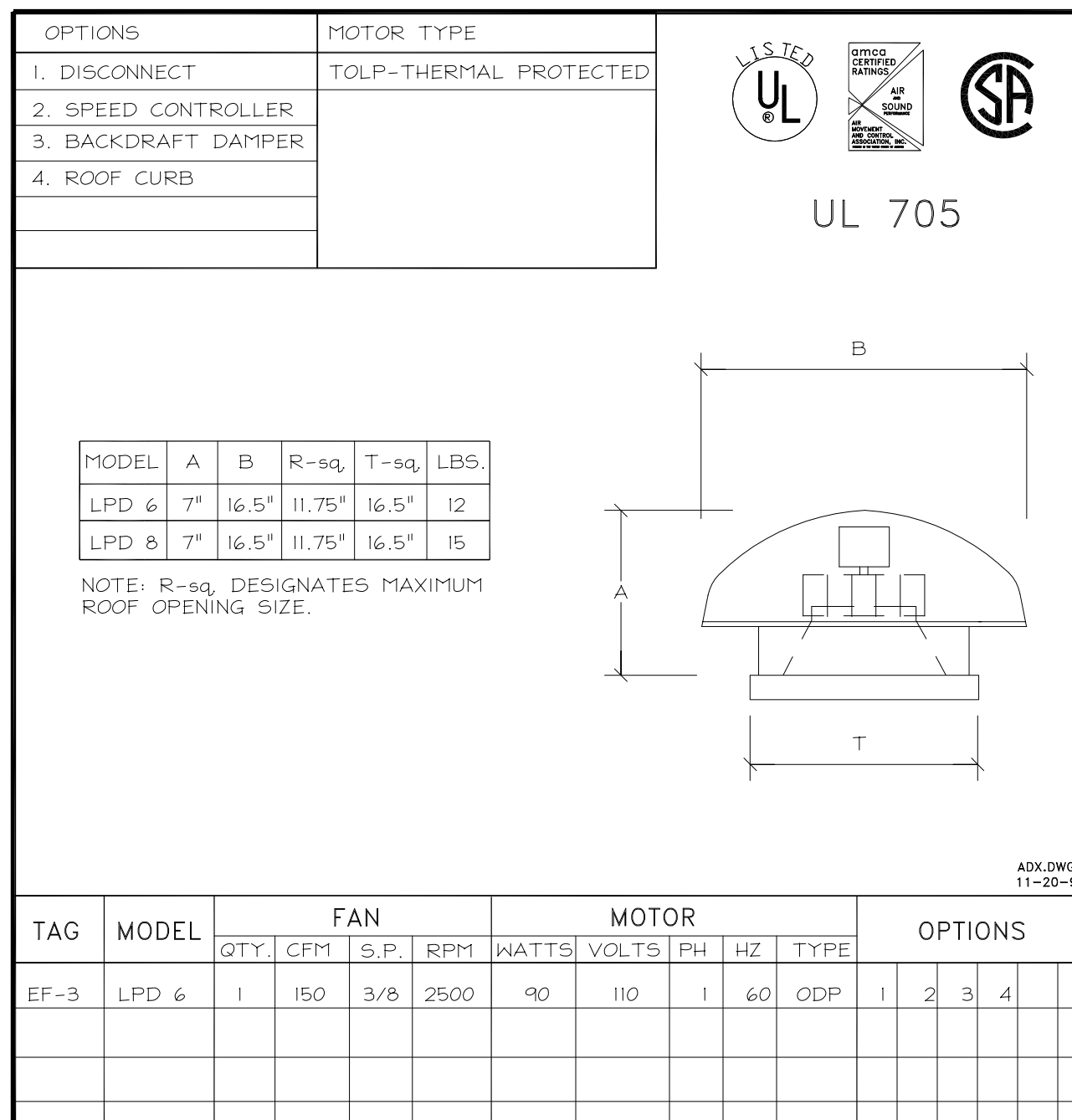
NSF	
MODEL NO. ADH	
MATERIAL Interior 18 GA. STAINLESS STEEL Exterior 18 GA. STAINLESS STEEL	
FINISH #3 POLISH	
LIGHTS - U.L. LISTED N/A	
FILTERS - U.L. ALUMINUM BAFFLE NONE	
CFM	500
Exhaust	
CONTROLS	
OTHER	
PROJECT TIM HORTON'S 1630	
LOCATION VARIOUS	
ARCHITECT	
ENGINEER	
CONTRACTOR	
SUBMITTED BY	
DATE	8-26-2003
JOB#	SUBMITTAL
AEROLATOR SYSTEMS, INC. 2716 CHAMBER DRIVE MONROE, NC 28110 Phone: (800) 843-8286	



NSF	
MODEL NO. ADH	
MATERIAL Interior 18 GA. STAINLESS STEEL Exterior 18 GA. STAINLESS STEEL	
FINISH #3 POLISH	
LIGHTS - U.L. LISTED N/A	
FILTERS - U.L. ALUMINUM BAFFLE NONE	
CFM	300
Exhaust	
CONTROLS	
OTHER	
PROJECT TIM HORTON'S 1630	
LOCATION ANYWHERE, USA	
ARCHITECT	
ENGINEER	
CONTRACTOR	
SUBMITTED BY	
DATE	5-22-2004
JOB#	SUBMITTAL
AEROLATOR SYSTEMS, INC. 2716 CHAMBER DRIVE MONROE, NC 28110 Phone: (800) 843-8286	



NSF	
MODEL NO. ADH	
MATERIAL Interior 18 GA. STAINLESS STEEL Exterior 18 GA. STAINLESS STEEL	
FINISH #3 POLISH	
LIGHTS - U.L. LISTED N/A	
FILTERS - U.L. ALUMINUM BAFFLE NONE	
CFM	300
Exhaust	
CONTROLS	
OTHER	
PROJECT TIM HORTON'S 1630	
LOCATION ANYWHERE, USA	
ARCHITECT	
ENGINEER	
CONTRACTOR	
SUBMITTED BY	
DATE	5-11-2000
JOB #	SUBMIT
AEROLATOR SYSTEMS, INC. 2716 CHAMBER DRIVE MONROE, NC 28110 PHONE: (800) 843-8286 FAX: (704) 289-9580	



NSF	
MODEL NO. ADH	
MATERIAL Interior 18 GA. STAINLESS STEEL Exterior 18 GA. STAINLESS STEEL	
FINISH #3 POLISH	
LIGHTS - U.L. LISTED N/A	
FILTERS - U.L. ALUMINUM BAFFLE NONE	
CFM	300
Exhaust	
CONTROLS	
OTHER	
PROJECT TIM HORTON'S 1630	
LOCATION ANYWHERE, USA	
ARCHITECT	
ENGINEER	
CONTRACTOR	
SUBMITTED BY	
DATE	5-11-2000
JOB #	SUBMIT
AEROLATOR SYSTEMS, INC. 2716 CHAMBER DRIVE MONROE, NC 28110 PHONE: (800) 843-8286 FAX: (704) 289-9580	

**KITCHEN HOOD GENERAL NOTES**

DUCTWORK:  
-ALL DUCTWORK BEYOND VENTILATOR EXHAUST COLLAR OPENING SHALL BE LIQUID TIGHT AND CONFORM TO ALL APPLICABLE CODES.  
-TO DETERMINE TOTAL SYSTEM STATIC PRESSURE, ADD EXHAUST OUTLET STATIC PRESSURE TO CALCULATED DUCT WORK SYSTEM STATIC PRESSURE.  
-DUCT COLLARS ARE SIZED FOR SPECIFIED AIR VOLUMES TO MEET APPLICABLE CODES.

INSTALLATION:  
-ALL EXHAUST VENTILATORS MUST BE INSTALLED LEVEL AND PLUMB.  
-INSTALL UNIT(S) WITH CLEARANCES TO ADJACENT WALLS AS REQUIRED TO CONFORM TO ALL LOCAL CODES AND INSPECTION REQUIREMENTS. NOTE: ALL WALLS SHOWN ON DRAWINGS ARE ASSUMED TO BE NON-COMBUSTIBLE.  
-EXHAUST AIR VOLUMES ARE RECOMMENDED FOR THE PROPER FUNCTION OF THE COOKING EQUIPMENT SPECIFIED.

REVISIONS:  
DATE ISSUED: 07-02-2008  
DRAWN BY: KRO CHECKED BY: JTP

The construction documentation contained on this sheet was not prepared by WD Partners, Inc. and is included within this set FOR REFERENCE ONLY for informational purposes pertaining to the project. WD Partners, Inc. did not review the construction documentation on this sheet for omissions, accuracy or completeness and by including this sheet within this set, WD Partners Inc. does not represent that such construction documentation on this sheet is accurate, complete and that information has not been omitted, or that it complies with applicable codes, restrictions and local requirements.

**Tim Hortons**  
1408 CONGRESS STREET  
PORTLAND, ME 04102

**EXHAUST HOOD SHOP DRAWINGS**

**FOR REFERENCE ONLY**